

Auction Catalogue

Construction - Rental Company Renewal - No Reserve Prices

The items are in different locations (see item description)

Viewing by appointment only!

For the inspection, please contact Frederico Serradas:

frederico.serradas@surplex.com

34 lots

Bidding ends:

Wednesday, 12/07/2023, 15:00(local time)

Bids are welcome immediately and can be placed at:

Contact:

Frederico Serradas

+351 919990151

frederico.serradas@surplex.com

www.surplex.com

Viewing:

The items are in different locations (see item description)

Viewing by appointment only!

For the inspection, please contact Frederico Serradas:

frederico.serradas@surplex.com

Description:

Quality construction machines. Renowned brands such as JLG, JCB, KUBOTA, etc.

1. The item list is being continuously updated - please check back regularly!
2. In most cases, several items are located at one place - please sort list by "location"!

The buyers Premium is variable as follows:

From 0 Eur to 10.000 Eur: 15%

From 10.001 Eur to 25.000 Eur: 8%

From 25.001 Eur to end: 5%



■ RENAULT 320DXI (PREMIUM 29AHA4) Truck

RENAULT 320DXI (PREMIUM 29AHA4) Truck
PT vehicle registration "81-NR-87"
113.516 Km according to counter
Truck 4x2 with 7 m long open box
Rear air suspension
A/C

Item number: 828126, **Manufacturer:** RENAULT, **Model / Type:** 320DXI (PREMIUM 29AHA4), **Year of manufacture:** 2007, **Item available from:** Immediately, **Item condition:** unchecked, **Delivery terms:** FCA Quinta do Anjo, loaded on truck, **Payment terms:** 100% payment prior to collection, **dimensions (l x w x h) approx.:** 10,000 x 3,000 x 3,000 mm, **weight approx.:** 6,700 kg



■ PRAMAC HLT-2 Led Lighting Tower

PRAMAC HLT-2 Led Lighting Tower
Serial number A00424
YOM: 2008
Without generator
CE Standards

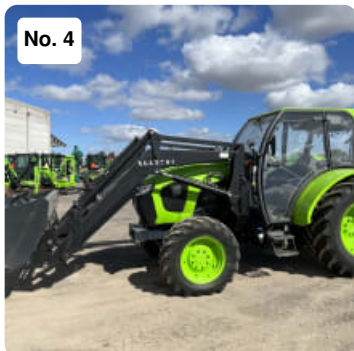
Item number: 813101, **Manufacturer:** PRAMAC, **Model / Type:** HLT-2, **Year of manufacture:** 2008, **Item available from:** Immediately, **Item condition:** unchecked, **Delivery terms:** FCA Porto Alto, Samora Correia, loaded on truck, **Payment terms:** 100% payment prior to collection, **dimensions (l x w x h) approx.:** 4,400 x 1,750 x 2,000 mm, **weight approx.:** 850 kg



■ MOBILE NEBULIZER DF MINI Dust Fighter

GENERAC MOBILE DF MINI Dust Fighter
(Copy of Declaration of Conformity Available)
Mobile Nebulizer
no. GGI0012574

Item number: 828098, **Manufacturer:** MOBILE NEBULIZER, **Model / Type:** DF MINI, **Year of manufacture:** 2019, **Item available from:** Immediately, **Item condition:** unchecked, **Delivery terms:** FCA Quinta do Anjo, loaded on truck, **Payment terms:** 100% payment prior to collection, **dimensions (l x w x h) approx.:** 710 x 600 x 1,300 mm, **weight approx.:** 70 kg



■ **KUBOTA M5111 LP Tractor**

4x4 KUBOTA M5111 LP Tractor with LOPEZ GARRIDO LG-1 Frontal Loader
 (Copy of Declaration of Conformity Available)
 PT vehicle registration "AJ 25 NA"
 no. KBTMGEDRPL8063213
 772 hours according to counter

Item number: 828123, **Manufacturer:** KUBOTA, **Model / Type:** M5111 LP, **Year of manufacture:** 2020, **Item available from:** Immediately, **Item condition:** unchecked, **Delivery terms:** FCA Quinta do Anjo, loaded on truck, **Payment terms:** 100% payment prior to collection, **dimensions (l x w x h) approx.:** 5,500 x 2,200 x 2,645 mm, **weight approx.:** 3,550 kg



■ **GENERAC MOBILE DF SMART Dust Fighter**

GENERAC MOBILE DF SMART Dust Fighter
 Mobile Nebulizer (Fogger)
 (Copy of Declaration of Conformity Available)
 no. GGI0017082
 Power Supply.....230V - 50Hz
 Power Fan.....2.2Kw
 Nominal Water Pression.....Min. 1 - Max 5 Bar
 Coverage.....13m (without wind)

Item number: 828122, **Manufacturer:** GENERAC MOBILE, **Model / Type:** DF SMART, **Year of manufacture:** 2020, **Item available from:** Immediately, **Item condition:** unchecked, **Delivery terms:** FCA Quinta do Anjo, loaded on truck, **Payment terms:** 100% payment prior to collection, **dimensions (l x w x h) approx.:** 985 x 785 x 835 mm, **weight approx.:** 79 kg



■ **D&A HAMMER 50V Hammer**

D&A HAMMER 50V Hammer
 Hydraulic Hammer to Suit Backhoe Loader/Mini-excavator 5 - 8 ton (Copy of Declaration of Conformity Available)
 no. 52V528

Item number: 828111, **Manufacturer:** D&A, **Model / Type:** HAMMER 50V, **Year of manufacture:** 2007, **Item available from:** Immediately, **Item condition:** unchecked, **Delivery terms:** FCA Modivas, loaded on truck, **Payment terms:** 100% payment prior to collection, **dimensions (l x w x h) approx.:** 160 x 60 x 60 mm, **weight approx.:** 350 kg

No. 7



■ JCB 535-125 Telescopic Handler

JCB TH540-125 Telescopic Handler
(Copy of Declaration of Conformity Available)
no. 1424634
8931 hours according to counter
Powershift Telehandler
Fork Positioner
WLI
Bucket

Item number: 828118, **Manufacturer:** JCB, **Model / Type:** 535-125, **Year of manufacture:** 2008, **Item available from:** Immediately, **Item condition:** unchecked, **Delivery terms:** FCA Quinta do Anjo, loaded on truck, **Payment terms:** 100% payment prior to collection, **dimensions (l x w x h) approx.:** 584 x 235 x 259 mm, **weight approx.:** 9,060 kg

No. 9



■ JCB SITEMASTER 3CX4T Backhoe Loader

JCB SITEMASTER 3CX4T Backhoe Loader
(Copy of Declaration of Conformity Available)
PT vehicle registration "74-NO-04"
no. 1618336
8747 hours according to counter
Powershuttle (Manual Gearbox) Sitemaster Backhoe Loader
Piped
Bucket
Forks

Item number: 828115, **Manufacturer:** JCB, **Model / Type:** SITEMASTER 3CX4T, **Year of manufacture:** 2010, **Item available from:** Immediately, **Item condition:** unchecked, **Delivery terms:** FCA Modivas, loaded on truck, **Payment terms:** 100% payment prior to collection, **dimensions (l x w x h) approx.:** 562 x 235 x 352 mm, **weight approx.:** 7,600 kg

No. 10



■ PRAMAC HLT-2 Led Lighting Tower

PRAMAC HLT-2 Led Lighting Tower
Serial number A00408
YOM: 2008
Without generator
CE Standards

Item number: 813097, **Manufacturer:** PRAMAC, **Model / Type:** HLT-2, **Year of manufacture:** 2008, **Item available from:** Immediately, **Item condition:** unchecked, **Delivery terms:** FCA Porto Alto, Samora Correia, loaded on truck, **Payment terms:** 100% payment prior to collection, **dimensions (l x w x h) approx.:** 4,400 x 1,750 x 2,000 mm, **weight approx.:** 850 kg



■ GENERAC MOBILE DF MINI Dust Fighter

GENERAC MOBILE DF MINI Dust Fighter
(Copy of Declaration of Conformity Available)
Mobile Nebulizer
no. GGI0012581

Item number: 828125, **Manufacturer:** GENERAC MOBILE, **Model / Type:** DF MINI, **Year of manufacture:** 2019, **Item available from:** Immediately, **Item condition:** unchecked, **Delivery terms:** FCA Quinta do Anjo, loaded on truck, **Payment terms:** 100% payment prior to collection, **dimensions (l x w x h) approx.:** 710 x 600 x 1,300 mm, **weight approx.:** 70 kg



■ JLG 450AJ SII Articulating Boom Lift

JLG 450AJ SII Articulating Boom Lift
Wheeled Articulated Boom Lift Access Platform 16m, (Copy of Declaration of Conformity Available)
no. 1300005227
1299 hours according to counter

Item number: 828092, **Manufacturer:** JLG, **Model / Type:** 450AJ SII, **Year of manufacture:** 2007, **Item available from:** Immediately, **Item condition:** unchecked, **Delivery terms:** FCA Quinta do Anjo, loaded on truck, **Payment terms:** 100% payment prior to collection, **dimensions (l x w x h) approx.:** 657 x 235 x 227 mm, **weight approx.:** 5,738 kg



■ GENERAC MOBILE DF MINI Dust Fighter

GENERAC MOBILE DF MINI Dust Fighter
(Copy of Declaration of Conformity Available)
Mobile Nebulizer
no. GGI0012576

Item number: 828114, **Manufacturer:** GENERAC MOBILE, **Model / Type:** DF MINI, **Year of manufacture:** 2019, **Item available from:** Immediately, **Item condition:** unchecked, **Delivery terms:** FCA Quinta do Anjo, loaded on truck, **Payment terms:** 100% payment prior to collection, **dimensions (l x w x h) approx.:** 710 x 600 x 1,300 mm, **weight approx.:** 70 kg

No. 14



■ KUBOTA M5111 LP Tractor

4x4 KUBOTA M5111 LP Tractor with LOPEZ GARRIDO LG-1 Frontal Loader
(Copy of Declaration of Conformity Available)
PT vehicle registration "AJ 24 NA"
no. KBTMGEDRTL8063372
555 hours according to counter

Item number: 828116, **Manufacturer:** KUBOTA, **Model / Type:** M5111 LP, **Year of manufacture:** 2020, **Item available from:** Immediately, **Item condition:** unchecked, **Delivery terms:** FCA Quinta do Anjo, loaded on truck, **Payment terms:** 100% payment prior to collection, **dimensions (l x w x h) approx.:** 5,500 x 2,200 x 2,645 mm, **weight approx.:** 3,550 kg

No. 15



■ GENERAC MOBILE DF MINI Dust Fighter

GENERAC MOBILE DF MINI Dust Fighter
(Copy of Declaration of Conformity Available)
Mobile Nebulizer
no. GGI0012580

Item number: 828117, **Manufacturer:** GENERAC MOBILE, **Model / Type:** DF MINI, **Year of manufacture:** 2019, **Item available from:** Immediately, **Item condition:** unchecked, **Delivery terms:** FCA Quinta do Anjo, loaded on truck, **Payment terms:** 100% payment prior to collection, **dimensions (l x w x h) approx.:** 710 x 600 x 1,300 mm, **weight approx.:** 70 kg

No. 16



■ D&A HAMMER 50V Hammer

D&A HAMMER 50V Hammer
Hydraulic Hammer to Suit Backhoe Loader/Mini-excavator 5 - 8 ton (Copy of Declaration of Conformity Available)
no. 52V523

Item number: 828094, **Manufacturer:** D&A, **Model / Type:** HAMMER 50V, **Year of manufacture:** 2007, **Item available from:** Immediately, **Item condition:** unchecked, **Delivery terms:** FCA Modivas, loaded on truck, **Payment terms:** 100% payment prior to collection, **dimensions (l x w x h) approx.:** 160 x 60 x 60 mm, **weight approx.:** 350 kg

No. 17

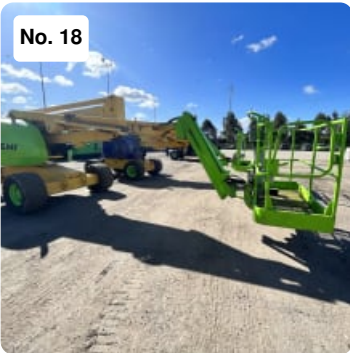


■ JCB 535-125 Telescopic Handler

JCB TH540-125 Telescopic Handler
(Copy of Declaration of Conformity Available)
no. 1423353 (TH12J0014)
7213 hours according to counter
Powershift Telehandler
Fork Positioner
WLI
Bucket
Forks

Item number: 828108, **Manufacturer:** JCB, **Model / Type:** 535-125, **Year of manufacture:** 2008, **Item available from:** Immediately, **Item condition:** unchecked, **Delivery terms:** FCA Quinta do Anjo, loaded on truck, **Payment terms:** 100% payment prior to collection, **dimensions (l x w x h) approx.:** 584 x 235 x 259 mm, **weight approx.:** 9,060 kg

No. 18

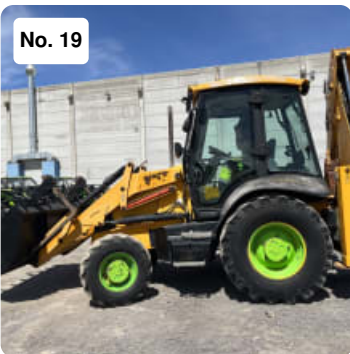


■ JLG 510AJ Articulating Boom Lift

JLG 510AJ Articulating Boom Lift
Wheeled Articulated Boom Lift Access Platform 18m
(Copy of Declaration of Conformity Available)
no 1300005326
3824 hours according to counter

Item number: 828113, **Manufacturer:** JLG, **Model / Type:** 510AJ, **Year of manufacture:** 2007, **Item available from:** Immediately, **Item condition:** unchecked, **Delivery terms:** FCA Modivas, loaded on truck, **Payment terms:** 100% payment prior to collection, **dimensions (l x w x h) approx.:** 768 x 234 x 230 mm, **weight approx.:** 7,685 kg

No. 19



■ JCB SITEMASTER 3CX4T Backhoe Loader

JCB SITEMASTER 3CX4T Backhoe Loader
(Copy of Declaration of Conformity Available)
no. 1618313
7324 hours according to counter
Powershuttle (Manual Gearbox) Sitemaster Backhoe Loader
Piped
Bucket
Forks
QH

Item number: 828096, **Manufacturer:** JCB, **Model / Type:** SITEMASTER 3CX4T, **Year of manufacture:** 2010, **Item available from:** Immediately, **Item condition:** unchecked, **Delivery terms:** FCA Quinta do Anjo, loaded on truck, **Payment terms:** 100% payment prior to collection, **dimensions (l x w x h) approx.:** 562 x 235 x 352 mm, **weight approx.:** 7,600 kg

No. 20



■ PRAMAC HLT-2 Led Lighting Tower

PRAMAC HLT-2 Led Lighting Tower
Serial number A00413
YOM: 2008
Without generator
CE Standards

Item number: 743941, **Manufacturer:** PRAMAC, **Model / Type:** HLT-2, **Year of manufacture:** 2008, **Item available from:** Immediately, **Item condition:** unchecked, **Delivery terms:** FCA Porto Alto, Samora Correia, loaded on truck, **Payment terms:** 100% payment prior to collection, **dimensions (l x w x h) approx.:** 4,400 x 1,750 x 2,000 mm, **weight approx.:** 850 kg

No. 21



■ GENERAC MOBILE DF MINI Dust Fighter

GENERAC MOBILE DF MINI Dust Fighter
(Copy of Declaration of Conformity Available)
Mobile Nebulizer
no. GGI0012575

Item number: 828110, **Manufacturer:** GENERAC MOBILE, **Model / Type:** DF MINI, **Year of manufacture:** 2019, **Item available from:** Immediately, **Item condition:** unchecked, **Delivery terms:** FCA Quinta do Anjo, loaded on truck, **Payment terms:** 100% payment prior to collection, **dimensions (l x w x h) approx.:** 710 x 600 x 1,300 mm, **weight approx.:** 70 kg

No. 22



■ GREENMECH ARBORIST 150RF Wood Chipper

GREENMECH ARBORIST 150RF Wood Chipper
(Copy of Declaration of Conformity Available)
PT vehicle registration "SE-10907"
no. 190153

Item number: 828119, **Manufacturer:** GREENMECH, **Model / Type:** ARBORIST 150RF, **Year of manufacture:** 2019, **Item available from:** Immediately, **Item condition:** unchecked, **Delivery terms:** FCA Quinta do Anjo, loaded on truck, **Payment terms:** 100% payment prior to collection, **dimensions (l x w x h) approx.:** 3,556 x 1,290 x 2,335 mm, **weight approx.:** 750 kg



■ GENERAC MOBILE DF MINI Dust Fighter

GENERAC MOBILE DF MINI Dust Fighter
(Copy of Declaration of Conformity Available)
Mobile Nebulizer
no. GGI0012573

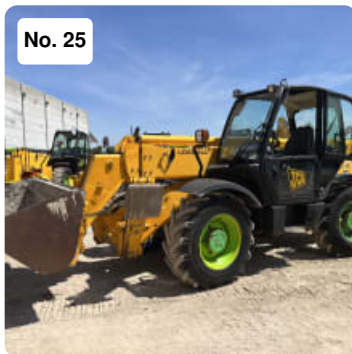
Item number: 828107, **Manufacturer:** GENERAC MOBILE, **Model / Type:** DF MINI, **Year of manufacture:** 2019, **Item available from:** Immediately, **Item condition:** unchecked,
Delivery terms: FCA Quinta do Anjo, loaded on truck, **Payment terms:** 100% payment prior to collection, **dimensions (l x w x h) approx.:** 710 x 600 x 1,300 mm, **weight approx.:** 70 kg



■ KUBOTA M5101 NQ Tractor

4x4 KUBOTA M5101 NQ Tractor
(Copy of Declaration of Conformity Available)
PT vehicle registration "AJ 22 NA"
no. KBTMHEDCCK8051056
798 hours according to counter

Item number: 828090, **Manufacturer:** KUBOTA, **Model / Type:** M5101 NQ, **Year of manufacture:** 2019, **Item available from:** Immediately, **Item condition:** unchecked,
Delivery terms: FCA Quinta do Anjo, loaded on truck, **Payment terms:** 100% payment prior to collection, **dimensions (l x w x h) approx.:** 3,915 x 1,420 x 2,358 mm, **weight approx.:** 2,650 kg

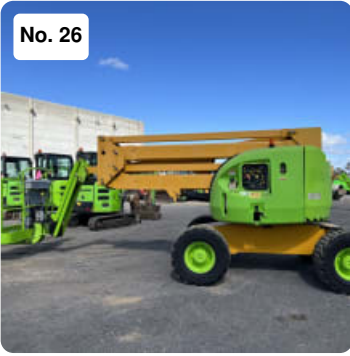


■ JCB 535-125 Telescopic Handler

JCB TH540-125 Telescopic Handler
(Copy of Declaration of Conformity Available)
no. 1424665 (TH12J0097)
7730 hours according to counter
Powershift Telehandler
Fork Positioner
WLI
Bucket
Forks

Item number: 828093, **Manufacturer:** JCB, **Model / Type:** 535-125, **Year of manufacture:** 2008, **Item available from:** Immediately, **Item condition:** unchecked,
Delivery terms: FCA Quinta do Anjo, loaded on truck, **Payment terms:** 100% payment prior to collection, **dimensions (l x w x h) approx.:** 584 x 235 x 259 mm, **weight approx.:** 9,060 kg

No. 26



■ JLG 450AJ SII Articulating Boom Lift

JLG 450AJ SII Articulating Boom Lift

Wheeled Articulated Boom Lift Access Platform 16m, (Copy of Declaration of Conformity Available)

no. 1300006064

622 hours according to counter

Item number: 828112, **Manufacturer:** JLG, **Model / Type:** 450AJ SII, **Year of manufacture:** 2008, **Item available from:** Immediately, **Item condition:** unchecked, **Delivery terms:** FCA Quinta do Anjo, loaded on truck, **Payment terms:** 100% payment prior to collection, **dimensions (l x w x h) approx.:** 657 x 235 x 227 mm, **weight approx.:** 5,738 kg

No. 27



■ GENERAC MOBILE DF MINI Dust Fighter

GENERAC MOBILE DF MINI Dust Fighter

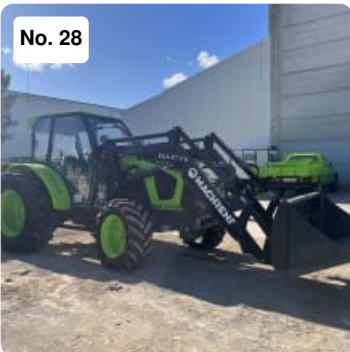
(Copy of Declaration of Conformity Available)

Mobile Nebulizer

no. GGI0012579

Item number: 828101, **Manufacturer:** GENERAC MOBILE, **Model / Type:** DF MINI, **Year of manufacture:** 2019, **Item available from:** Immediately, **Item condition:** unchecked, **Delivery terms:** FCA Quinta do Anjo, loaded on truck, **Payment terms:** 100% payment prior to collection, **dimensions (l x w x h) approx.:** 710 x 600 x 1,300 mm, **weight approx.:** 70 kg

No. 28



■ KUBOTA M5111 LP Tractor

4x4 KUBOTA M5111 LP Tractor with LOPEZ GARRIDO LG-1 Frontal Loader

(Copy of Declaration of Conformity Available)

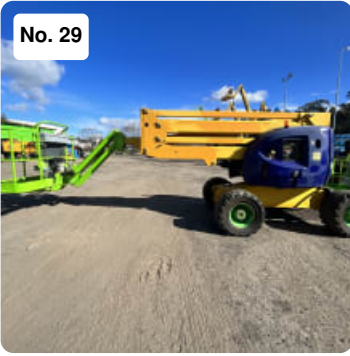
PT vehicle registration "AJ 26 NA"

no. KBTMGEDRAK8061807

674 hours according to counter

Item number: 828100, **Manufacturer:** KUBOTA, **Model / Type:** M5111 LP, **Year of manufacture:** 2020, **Item available from:** Immediately, **Item condition:** unchecked, **Delivery terms:** FCA Quinta do Anjo, loaded on truck, **Payment terms:** 100% payment prior to collection, **dimensions (l x w x h) approx.:** 5,500 x 2,200 x 2,645 mm, **weight approx.:** 3,550 kg

No. 29



■ JLG 450AJ SII Articulating Boom Lift

JLG 450AJ SII Articulating Boom Lift
Wheeled Articulated Boom Lift Access Platform
(Copy of Declaration of Conformity Available)
no. 1300005233
1213 hours according to counter

Item number: 828105, **Manufacturer:** JLG, **Model / Type:** 450AJ SII, **Year of manufacture:** 2007, **Item available from:** Immediately, **Item condition:** unchecked, **Delivery terms:** FCA Modivas, loaded on truck, **Payment terms:** 100% payment prior to collection, **dimensions (l x w x h) approx.:** 657 x 235 x 227 mm, **weight approx.:** 5,738 kg

No. 30

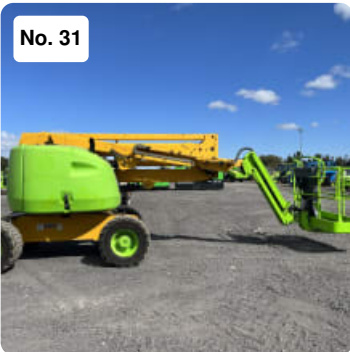


■ GENERAC MOBILE DF MINI Dust Fighter

GENERAC MOBILE DF MINI Dust Fighter
(Copy of Declaration of Conformity Available)
Mobile Nebulizer
no. GGI0012572

Item number: 828087, **Manufacturer:** GENERAC MOBILE, **Model / Type:** DF MINI, **Year of manufacture:** 2019, **Item available from:** Immediately, **Item condition:** unchecked, **Delivery terms:** FCA Quinta do Anjo, loaded on truck, **Payment terms:** 100% payment prior to collection, **dimensions (l x w x h) approx.:** 710 x 600 x 1,300 mm, **weight approx.:** 70 kg

No. 31



■ JLG 450AJ SII Articulating Boom Lift

JLG 450AJ SII Articulating Boom Lift
Wheeled Articulated Boom Lift Access Platform 16m, (Copy of Declaration of Conformity Available)
no. 1300005210
4888 hours according to counter

Item number: 828104, **Manufacturer:** JLG, **Model / Type:** 450AJ SII, **Year of manufacture:** 2007, **Item available from:** Immediately, **Item condition:** unchecked, **Delivery terms:** FCA Quinta do Anjo, loaded on truck, **Payment terms:** 100% payment prior to collection, **dimensions (l x w x h) approx.:** 657 x 235 x 227 mm, **weight approx.:** 5,738 kg

No. 32



■ GREENMECH ARBORIST 150 Wood Chipper

GREENMECH ARBORIST 150 Wood Chipper
(Copy of Declaration of Conformity Available)
PT vehicle registration "E-13554"
no. 190568

Item number: 828124, **Manufacturer:** GREENMECH, **Model / Type:** ARBORIST 150, **Year of manufacture:** 2019, **Item available from:** Immediately, **Item condition:** unchecked, **Delivery terms:** FCA Quinta do Anjo, loaded on truck, **Payment terms:** 100% payment prior to collection, **dimensions (l x w x h) approx.:** 3,556 x 1,290 x 2,335 mm, **weight approx.:** 750 kg

No. 33

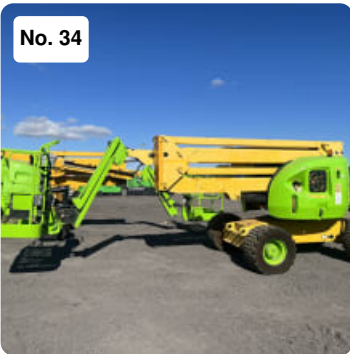


■ KUBOTA M5111 LP Tractor

4x4 KUBOTA M5111 LP Tractor with LOPEZ GARRIDO LG-1 Frontal Loader
(Copy of Declaration of Conformity Available)
PT vehicle registration "AJ 28 NA"
no. KBTMGEDRPL8063373
597 hours according to counter

Item number: 828089, **Manufacturer:** KUBOTA, **Model / Type:** M5111 LP, **Year of manufacture:** 2020, **Item available from:** Immediately, **Item condition:** unchecked, **Delivery terms:** FCA Quinta do Anjo, loaded on truck, **Payment terms:** 100% payment prior to collection, **dimensions (l x w x h) approx.:** 5,500 x 2,200 x 2,645 mm, **weight approx.:** 3,550 kg

No. 34



■ JLG 450AJ SII Articulating Boom Lift

JLG 450AJ SII Articulating Boom Lift
Wheeled Articulated Boom Lift Access Platform 16m, (Copy of Declaration of Conformity Available)
no. 1300005852
4321 hours abgelesene Zählerstunden

Item number: 828088, **Manufacturer:** JLG, **Model / Type:** 450AJ SII, **Year of manufacture:** 2008, **Item available from:** Immediately, **Item condition:** unchecked, **Delivery terms:** FCA Quinta do Anjo, loaded on truck, **Payment terms:** 100% payment prior to collection, **dimensions (l x w x h) approx.:** 657 x 235 x 227 mm, **weight approx.:** 5,738 kg

No. 35



■ **KOMATSU 290 NLC Crawler Excavator**

KOMATSU 290 NLC Crawler Excavator

no. 09900282

Item number: 828476, **Manufacturer:** KOMATSU, **Model / Type:** 290 NLC, **Item available from:** Immediately, **Item condition:** unchecked, **Delivery terms:** FCA Leiria, loaded on truck, **Payment terms:** 100% payment prior to collection, **dimensions (l x w x h) approx.:** 5,460 x 2,850 x 3,180 mm, **weight approx.:** 29,500 kg