

Auction Catalogue

Metalworking Auction - Portugal

The items are in different locations (see item description)

Viewing by appointment only!

For the inspection, please contact Frederico Serradas:

frederico.serradas@surplex.com

55 lots

Bidding ends:

Thursday, 11/05/2023, 11:00(local time)

Bids are welcome immediately and can be placed at:

Contact:

Frederico Serradas

+351 919990151

frederico.serradas@surplex.com

www.surplex.com

Viewing:

The items are in different locations (see item description)

Viewing by appointment only!

For the inspection, please contact Frederico Serradas:

frederico.serradas@surplex.com

Description:

Metalworking Auction, different locations

Important:

1. The item list is being continuously updated - please check back regularly!
2. In most cases, several items are located at one place - please sort list by "location"!



■ BIGLIA B 750 CNC Lathe

BIGLIA B750 CNC Lathe

diameter max. of bar 65mm | 80mm | 93/100mm

diameter max. machining 552/350mm | 552/450mm | 552mm

max speed spindle 4500rpm/ 3500rpm/ 3000rpm

spindle nose 6" HANDLE/ 8" HANDLE/ 8" HANDLE

Spindle motor power 30-40 kW/ 15-22 kW/ 30-38 kW

Sub spindle motor power 5000-4500 rpm (only on SM & YS versions)

number of tools 16/12

X Axis Displacement 305mm

Axis Y Displacement 140 mm (only in Y & YS versions)

Z Axis Displacement 860mm

Fast Scroll X | AND | z 18m/min | 7.5 m/min (only in Y & YS versions) | 24m/min

Dimensions (chip extractor included) 507 cm/ 203 cm/ 222 cm

Item number: 797088, **Manufacturer:** BIGLIA, **Model / Type:** B 750, **Year of manufacture:** 2017, **Item available from:** Immediately, **Item condition:** unchecked, **Delivery terms:** FCA Marinha Grande, loaded on truck, **Payment terms:** 100% payment prior to collection, **weight approx.:** 7,800 kg, **dimensions (l x w x h) approx.:** 5,000 x 2,200 x 2,222 mm



■ GER RHC 1000 Cylindric Grinding Machine

GER RHC 1000 Cylindric Grinding Machine

Digital 2 Axes Mitutoyo

Distance between points: 800 mm

Height of stitches: 175 mm

Ø max to rectify: 355 mm

Dimensions of the wheel: 400x50x127 mm

Total power: 12 HP

Made in Spain

Item number: 797089, **Manufacturer:** GER, **Model / Type:** RHC 1000, **Item available from:** Immediately, **Item condition:** unchecked, **Delivery terms:** FCA Marinha Grande, loaded on truck, **Payment terms:** 100% payment prior to collection, **weight approx.:** 4,200 kg, **dimensions (l x w x h) approx.:** 3,500 x 1,800 x 1,900 mm



■ AFFRI SYSTEM 206 RTS Hardness Tester

Item number: 798582, **Manufacturer:** AFFRI SYSTEM, **Model / Type:** 206 RTS, **Year of manufacture:** 1990, **Item available from:** Immediately, **Item condition:** unchecked, **Delivery terms:** FCA Marinha Grande, loaded on truck, **Payment terms:** 100% payment prior to collection, **dimensions (l x w x h) approx.:** 500 x 200 x 600 mm, **weight approx.:** 100 kg



■ TRUMPF TRULASER 3030 Laser Cutting Machine

TRUMPF TRULASER 3030 Laser Cutting

no. A1220A0377

Laser On: 63.871 hours

TRUMPF LOADMASTER Loading Station

TRUMPF TRUFLOW 3200 Laser

Laser Power 3200W

RIEDEL L15/21-TR 4-P/04.03 Chiller

no. 987217

400V / 50Hz

Max. Rated Current 37,1 A

Refrigerant R134a

Operating Overpressure 20,2 bar

TRUMPF MF-L 2000 HANDTE-MICROPORE FILTER

Air Quantity 2.000 m3/h

Total Pressure 355 daPa

Filter Flat 36 m2

Frequency 50 Hz

TRUMPF TRUPUNCH 3000 Punching Machine

no. A0035D0102

TRUMPF TRULASER 3030 Laser Cutting with CONVEYING AND SUCTION MODULE and TRUMPF LOADMASTER

Loading Station

Item number: 820906, **Manufacturer:** TRUMPF, **Model / Type:** TRULASER 3030, **Year of manufacture:** 2010, **Item available from:** Immediately, **Item condition:** unchecked, **Delivery terms:** FCA Matosinhos, loaded on truck, **Payment terms:** 100% payment prior to collection, **Read off operating hours:** 63,871 h, **table length:** 3,000 mm, **table width:** 1,500 mm, **laser capacity:** 3,200 kW, **operating hours of laser:** 40,501 h, **weight approx.:** 12,000 kg, **dimensions (l x w x h) approx.:** 12,000 x 6,800 x 2,500 mm

No. 5



■ SUNNEN MBC-1804 G Horizontal Honing Machine

SUNNEN MBC-1804 G Horizontal Honing Machine

no. 1J1 89429

Min. diameter 1.5 mm

Max. diameter 165 mm

Max. honing length 406 mm

Spindle speeds: number (steps) 12 from 200 rpm up to 2500 rpm

Total stroke 80 - 310 mm

Stroke speed: number (steps) 5 from 80 s/min up to 310 s/min

Voltage 50 Hz 3x 380 Volt

Spindle motor 0.73 kW

Honing Supplies Include

Item number: 797084, **Manufacturer:** SUNNEN, **Model / Type:** MBC-1804 G, **Year of manufacture:** 1987, **Item available from:** Immediately, **Item condition:** unchecked, **Delivery terms:** FCA Marinha Grande, loaded on truck, **Payment terms:** 100% payment prior to collection, **weight approx.:** 530 kg, **dimensions (l x w x h) approx.:** 1,830 x 1,250 x 1,700 mm

No. 6



■ BARSON ROLLOX AUTOMATIC 160 Automatic Band Saw

BARSON ROLLOX AUTOMATIC 160 Automatic Band Saw

The saw makes automatic feeding controlled by a micro switch

Sawblade 3000x20x0,9 mm

Cutting Diameter: 1600 mm

The pieces are cut in series or normal.

Item number: 797092, **Manufacturer:** BARSON ROLLOX, **Model / Type:** AUTOMATIC 160, **Item available from:** Immediately, **Item condition:** unchecked, **Delivery terms:** FCA Marinha Grande, loaded on truck, **Payment terms:** 100% payment prior to collection, **dimensions (l x w x h) approx.:** 1,800 x 1,700 x 1,000 mm, **weight approx.:** 500 kg

No. 7



■ MWM MIKROMATIC Lathe

MWM MIKROMATIC Lathe

Lathe Per Points 600 mm

Chuck 200 mm

Hole: 30 mm

With Digital

Item number: 797091, **Manufacturer:** MWM, **Model / Type:** MIKROMATIC, **Item available from:** Immediately, **Item condition:** unchecked, **Delivery terms:** FCA Marinha Grande, loaded on truck, **Payment terms:** 100% payment prior to collection, **dimensions (l x w x h) approx.:** 1,000 x 1,000 x 1,000 mm, **weight approx.:** XXXX kg



■ NEORIL 230x400 Automatic Band Saw

NEORIL 230x400 Automatic Band Saw
CUTTING CAPACITY.. IN RED. 230MM
RECT. 230X400MM
ANGULAR CUTTING.230X230MM
RIBBON BAND DIMENSIONS: 27X3.035MM
TAPE BAND SPEEDS.25,40,50,70MTS/MIN.
MOTOR POWER.1.5HP
SERIES NO.812399
Supply Voltage: 400 V

Item number: 797093, **Manufacturer:** NEORIL, **Model / Type:** 230x400, **Year of manufacture:** 1998, **Item available from:** Immediately, **Item condition:** unchecked, **Delivery terms:** FCA Marinha Grande, loaded on truck, **Payment terms:** 100% payment prior to collection, **dimensions (l x w x h) approx.:** 1,600 x 1,700 x 1,000 mm, **weight approx.:** 700 kg



■ VICTOR VTURN-20 CNC Lathe

VICTOR VTURN-20 CNC Lathe
Turning diameter over slide 250 mm
Turning length 520 mm
x-motion 150 mm
z-motion 400 mm
Turning diameter 550 mm
ControlFANUC Series O- T
toolchanger positions10
chuck 250 mm

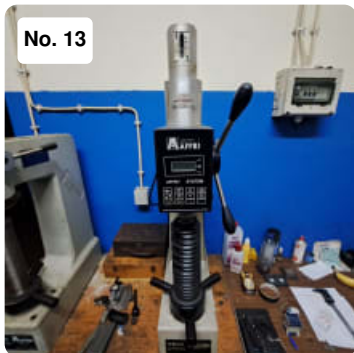
Item number: 797085, **Manufacturer:** VICTOR, **Model / Type:** VTURN-20, **Item available from:** Immediately, **Item condition:** unchecked, **Delivery terms:** FCA Marinha Grande, loaded on truck, **Payment terms:** 100% payment prior to collection, **weight approx.:** 5,000 kg, **dimensions (l x w x h) approx.:** 3,300 x 1,800 x 1,900 mm



■ KNUTH Sand Blaster

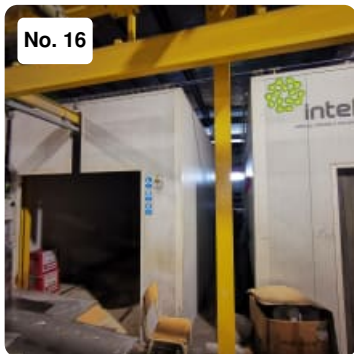
KNUTH Sand Blaster
 Cabin / Tank / Sandblasting Machine 350Liters
 internal dimensions of cabinet: 945 x 605 x 605mm
 capacity of approximately 20kg of sand
 voltage 230V
 working pressure 4 – 8 bar
 air consumption 160 – 700L / min
 diameter of mouth 6,7mm

Item number: 797087, **Manufacturer:** KNUTH, **Item available from:** Immediately, **Item condition:** unchecked, **Delivery terms:** FCA Marinha Grande, loaded on truck, **Payment terms:** 100% payment prior to collection, **dimensions (l x w x h) approx.:** 1,000 x 700 x 1,500 mm, **weight approx.:** 130 kg



■ AFFRI SYSTEM 206 RSD Hardness Tester

Item number: 798581, **Manufacturer:** AFFRI SYSTEM, **Model / Type:** 206 RSD, **Year of manufacture:** 1995, **Item available from:** Immediately, **Item condition:** unchecked, **Delivery terms:** FCA Marinha Grande, loaded on truck, **Payment terms:** 100% payment prior to collection, **dimensions (l x w x h) approx.:** 500 x 200 x 600 mm, **weight approx.:** 100 kg



■ Manual Coating Installation with Electrostatic Coating Cabin

Manual coating installation with electrostatic coating cabin

1 - GENERAL SPECIFICATIONS:

· Workpiece Dimensions:

Max. Height 1.800 mm

Max. Width 1.500 mm

Max. Length 1.800 mm

Max. Thickness 7 mm

Max. weight (supported in rack) 350 Kg

· Electric Consumption:

Consumption (machine) (50 Hz) 400V+N+T (230V+T)

Metallic wash house 8 kW

Complete painting booth 25 kW

Polymerization Oven 6 kW

Total consumption 39 kW

Fuel Supply LPG

Polymerization 150.500 kcal/h

Total Consumption 602.000 kcal/h

2 - EQUIPMENT DESCRIPTION

· CABIN WITH PRODUCT RECOVERY TREATMENT SYSTEM:

Useful dimensions: 4000 x 3500 x 4500 mm (H x W x D);

Clearance gauge: 2000 x 2200 mm (W x H);

Construction in isorighe boards ref. 1000/40BG-BG with 40 mm insulation, colour Ral 9006, duly structured with sheet metal gutter.

Structured with ST 37 steel sheet rails.

6 Lamps 3 x 36W

An exhaust dome, equipped with a helicoidal fan, mod. HPX-56-4T-1.5

Equipped with phosphating machine treatment system with product recovery

The high pressure washer is used in manual treatment systems (of parts to be treated).

Its purpose is to degrease / phosphate the parts to paint.

Principle of Operation: this machine should make a dilution of 1:2 and aspiration of the solution efficiently. The water diluted with the solution is sucked into a tank, and

manually launched by a lance directly on the parts to to degrease/phosphatize, during a necessary time. After this operation (Degreasing/Fosphatizing), the product's suction is switched off and only water is washed, at room temperature.

The product recommended by Chemetall for preparing the solution to be used is GARDOBOND

KHS at 65

g/litre (54 ml/litre).

Temperature: 60 - 80 °C

Time: Variable, depending on the type of workpiece and its contamination!

The analysis value at the exit of the lance should be Total Acidity = 7.5 - 8.5 points.

NOTE: The product for preparing the solution, draining and treating water from washing, electrical connections electrical connections, water and fuel (diesel), to be paid by the CLIENT. HDS 8/18 - 4 C Washer

Three-phase 4-pole hot water high pressure washer, water-cooled electric motor, with storage compartment storage compartment, Eco mode, 1-button operation, integrated tanks, Easy Press, continuous adjustment of pressure and water flow, etc.

Accessories supplied with the machine:

- Gun with soft grip coating
- High pressure hose 10 m DN 6, 250 bar
- Lance 600 mm
- Milling nozzle
- SDS system
- Anti-creasing system (AVS)
- Pressure control switch
- Integrated detergent and fuel tanks
- Servo Control (pressure control)

Current type Ph/V/Hz 3/400/50

Water flow rate (l/h) 300 - 800

Working pressure (bar/MPa) 30 - 180 / 3 - 18

Max. working temperature (°C) (°C) 80 - 155

Power (kW) 6

Diesel consumption (kg/h) 5

Fuel tank (l) 15

Weight (kg) 112

Measures (L x W x H) (mm) 1060 x 650 x 920

Detergent tank (l) 10

DESCRIPTION: Compact class high performance three-phase hot water high-pressure washer

with 4-pole motor water-cooled motor.

The Eco mode ensures an economical and ecological use.

Easy to use thanks to the one-button operation.

Excellent mobility thanks to large wheels and steering roller.

Chassis robust chassis with integrated detergent and fuel tanks.

Ergonomic Easy Press gun with Softgrip and Continuous pressure and flow control in the gun.

Practical storage compartments for accessories, nozzles, etc.

· POWDER SPRAY BOOTH, WITH INCORPORATED FILTRATION (LOOSE POWDER):

Useful inside dimensions: 3000 x 3000 x 4500 mm (Height x Width x Length).

Clearance gauge: 2100 x 2000 mm (height x width)

Construction in 40 mm insulated polyurethane panel, duly structured with a steel profile.

Interior lighting system with LED reinforcement.

Composed of a cartridge filtration system, with a capacity of 12 000 m³/h,!

A suction speed of about 0.50 metres per minute is calculated on the cabin's entry gauge.

The automatic suction and filtering system is a automatic dedusting by filter cartridges with high highly efficient from an economic and environmental point of view. With a retention performance that eliminates the conventional extraction to the exterior, allowing total recycling of the air inside the building.

The careful construction of INTELLYSYS, using pressed, bent and painted panels, means that

they are in machines of high robustness. The filtering cartridges are made of top quality "fabric", performing quality, performing filtration operations efficiently and

long-lasting. The cartridges are assembled on galvanized or painted galvanized or painted metal cages, to increase resistance and resistance and durability.

Especially suitable for medium and fine dust filtration, maintains a high filtration efficiency and a perfect cleaning of the bottom of the filtering structure, thanks to the continuous operation of the Cleaning System.

Electric panel with electronic variable speed drive

Functional Characteristics:

Flow rate 12.000 [m³/h] - 12.000 - [m³/h]

Nº of solenoid valves - 4

Floor area - 2080 x 1160 x 4130 mm - [mm (h)]

Number of cartridges - 8 pcs x(Ø324x1000) polypropylene

Fan

Type - DCR 501/B

Flow rate - 12,000 [m³/h]

Total Pressure - 347 [mm W.C.] Speed

Rotational speed - 2,930 [R.P.M] Installed power

Installed power - 18.5 kW, 2-pole

Voltage - 400 / 690 [Volt]

Frequency - 50 [Hz].

· MANUAL APPLICATION EQUIPMENT WAGNER POWDER:

2 WAGNER SPRINT application equipment

AIRFLUID, composed of (each)

- 1 PEM X1 latest generation gun

- 1 Trolley with vibration table

- 1 Generator EPG - SprintX

· GAS STATIC POLYMERIZATION OVEN:

Robust construction in galvanized sheet in thicknesses of thickness of 1.5, 2.5, and 3 mm;

Construction in panels "sandwich" of 150 mm, built in Rock Wool core, density of 120 kg/m³ high thermal insulation, painted exterior colour "SILVER METALIC" and interior face in galvanized sheet metal, duly structured and reinforced. This guarantees a minimum differential between the temperature of the exterior wall of the and the ambient temperature;

Two half Sliding Doors on the top of the Oven.

1 Slot for overhead gutters (not included)

Heating through ONE Burner with direct flame burner, radiant tube, Mod.BPR150 MB

· Sensor Element: PT100 probe;

· Maximum Thermal Power: 175kW;

Electrical Control, Protection and Command Panel.

Maximum temperature: 250 °C;

Air recirculation caused by 3 centrifugal fans equipped with a 2 Cv motor, fans type CMSH 1445 -4T - 2CV with an operating point of 3 500 m³/h at 60mmH₂O, each. We have designed around 362 re-circulations/hour, which for an internal volume of approx. 29 m³, constitutes a circulating flow of approx. 10,500 m³/h.

Anti-blocking safety system inside;

Electric control panel, protection and command with temperature indication through digital controller, heating, regime and ventilation signaling, general cut-off switch, protection of the motors with circuit breakers, working timer, end of operation buzzer and active safety circuit, (CE)

· OVERHEAD RAIL CONVEYOR:

NIKO overhead rail and accessories

Air rail in profile, 3.5mm thick, with yellow galvanization. Its conical design, allows the correct alignment of the trolleys and reduces the possibility of dust accumulation.

This guarantees the proper functioning of the trolleys and the long life of the profile.

This type of profile requires only 1-4% strength of the total weight of the total weight to be handled.

Maximum load (350 Kg / rack)

9 Piece holder frames, built in rectangular rectangular tubular profile and T-bar, perforated throughout dimension (4,000 mm), for the placement of hooks.

Equipped with 2 high temperature trolleys, each for to be moved on a rail each.

· FLUE GAS EXTRACTION DUCTS:

Flue gas extraction ducts made of INOX sheet in INOX plate, others in galvanized spiral pipe.

Piping construction in accordance with Decree-Law No. 78/2004 of 3 April, Ordinance 263/2005 and Rectification 38/2005 and standard NP 2167 of 1992;

Diameters in accordance with the machine outputs;

Fixing through unions or embedding of easy replacement easy replacement;

Roof sealing by plates, according to the roof tile, with the tile, with sealing by mastik and aluminium tape aluminium tape;

Joints by inlaying and insulated by aluminium tape aluminium tape;

Trolley carriage, bridge crane type, cross travel, with mechanical interlocking system and anti-fall safety device for the frame. It comprises the trolley carriage, multiple crossing lines, locks and an operator's lever.

Item number: 708087, **Manufacturer:** INTEELLYSYS, **Model / Type:** EE 004 17, **Year of manufacture:** 2017, **Item available from:** immediately, **Item condition:** unchecked, **Delivery terms:** FCA Brito - Guimarães, loaded on truck, **Payment terms:** 100% payment prior to collection, **dimensions (l x w x h) approx.:** 19,000 x 12,000 x 3,500 mm, **weight approx.:** 8,500 kg



■ PRAMAC HLT-2 Led Lighting Tower

PRAMAC HLT-2 Led Lighting Tower

Serial number A00413

YOM: 2008

Without generator

CE Standards

Item number: 743941, **Manufacturer:** PRAMAC, **Model / Type:** HLT-2, **Year of manufacture:** 2008, **Item available from:** Immediately, **Item condition:** unchecked, **Delivery terms:** FCA Porto Alto, Samora Correia, loaded on truck, **Payment terms:** 100% payment prior to collection, **dimensions (l x w x h) approx.:** 4,400 x 1,750 x 2,000 mm, **weight approx.:** 850 kg



■ HIMOINSA T.ILUM A700 6FOCOS 1500W L.RECTA Led Lighting Tower

HIMOINSA T.ILUM A700 6FOCOS 1500W L.RECTA Led Lighting Tower

Serial number 6100776

YOM: 2006

Without generator

CE Standards

Item number: 811925, **Manufacturer:** HIMOINSA, **Model / Type:** T.ILUM A700 6FOCOS 1500W L.RECTA, **Year of manufacture:** 2006, **Item available from:** Immediately, **Item condition:** unchecked, **Delivery terms:** FCA Porto Alto, Samora Correia, loaded on truck, **Payment terms:** 100% payment prior to collection, **dimensions (l x w x h) approx.:** 3,750 x 1,500 x 1,950 mm, **weight approx.:** 850 kg



■ PRAMAC HLT-2 Led Lighting Tower

PRAMAC HLT-2 Led Lighting Tower

Serial number A00408

YOM: 2008

Without generator

CE Standards

Item number: 813097, **Manufacturer:** PRAMAC, **Model / Type:** HLT-2, **Year of manufacture:** 2008, **Item available from:** Immediately, **Item condition:** unchecked, **Delivery terms:** EXW Porto Alto, Samora Correia, ex foundation, unpackaged, **Payment terms:** 100% payment prior to collection, **dimensions (l x w x h) approx.:** 4,400 x 1,750 x 2,000 mm, **weight approx.:** 850 kg



No. 20

■ PRAMAC HLT-2 Led Lighting Tower

PRAMAC HLT-2 Led Lighting Tower

Serial number A00424

YOM: 2008

Without generator

CE Standards

Item number: 813101, **Manufacturer:** PRAMAC, **Model / Type:** HLT-2, **Year of manufacture:** 2008, **Item available from:** Immediately, **Item condition:** unchecked, **Delivery terms:** FCA Porto Alto, Samora Correia, loaded on truck, **Payment terms:** 100% payment prior to collection, **dimensions (l x w x h) approx.:** 4,400 x 1,750 x 2,000 mm, **weight approx.:** 850 kg



No. 21

■ GESAN DVS 150 Power Generator

Power generator

Serial number 227768

YOM: 2007

Power: 120 kW

Working speed: 1500 Rpm

Frequency: 50 Hz

Voltage: 230-400 V

Engine: VOLVO PENTA TAD 731 GE

Fuel: Diesel

Working hours according to counter: 24508 h

CE Standards

Item number: 813559, **Manufacturer:** GESAN, **Model / Type:** DVS 150, **Year of manufacture:** 2007, **Item available from:** Immediately, **Item condition:** unchecked, **Delivery terms:** FCA Porto Alto, Samora Correia, loaded on truck, **Payment terms:** 100% payment prior to collection, **dimensions (l x w x h) approx.:** 3,530 x 1,140 x 1,840 mm, **weight approx.:** 2,628 kg



No. 22

■ KIHEUNG KNC - U800 Bed Type Milling Machine

Serial number 5080390
 Max. spindle speed: 3000 Rpm
 Table length 2300 mm
 Table width 800 mm
 Max load on table 3500 kg
 Spindle taper ISO 50
 X-axis travel: 1900 mm
 Y-axis travel: 800 mm
 Z-axis travel: 800 mm
 CNC Heidenhain 426
 CE Standards

Item number: 707434, **Manufacturer:** KIHEUNG, **Model / Type:** KNC - U800, **Year of manufacture:** 1998, **Item available from:** immediately, **Item condition:** unchecked, **Delivery terms:** FCA Agueda, loaded on truck, **Payment terms:** 100% payment prior to collection, **weight approx.:** 11,500 kg, **dimensions (l x w x h) approx.:** 4,000 x 2,700 x 2,850 mm



No. 23

■ CHIRON-WERKE FZ 12 S CNC Vertical Machining Centre

CHIRON-WERKE FZ 12 S CNC Vertical Machining Centre
 2022 retrofitted
 no. 474-13

1995 KNOLL 340K-1/300 Chip Conveyor

Item number: 821397, **Manufacturer:** CHIRON-WERKE, **Model / Type:** FZ 12 S, **Year of manufacture:** 1995, **Item available from:** Immediately, **Item condition:** unchecked, **Delivery terms:** FCA Torres Novas, loaded on truck, **Payment terms:** 100% payment prior to collection, **weight approx.:** 3,500 kg, **dimensions (l x w x h) approx.:** 3,800 x 2,000 x 3,000 mm



No. 24

■ TRUMPF SORTMASTER Automated Parts Removal Machine

TRUMPF SORTMASTER

Removes, sorts, and stacks cut finished parts and allows you to operate your 2D laser cutting machine in a fully automated fashion.

To do this, you connect it to a storage system with a LiftMaster.

In this way you can manufacture reliably, on demand, and around the clock.

Smart functions correct potential malfunctions independently.

For example, with automatic separation control: if a part does not come loose, the gripper head separates it from the scrap skeleton by shaking it.

UNLOADING

MAX. Part Size: 1000 mm x 1500 mm

MIN. Part Size: 30 mm x 80 mm

MAX. Part Weight: 125 kg

Item number: 821523, **Manufacturer:** TRUMPF, **Model / Type:** SORTMASTER, **Year of manufacture:** 2015, **Item available from:** Immediately, **Item condition:** unchecked, **Delivery terms:** FCA, loaded on truck, **Payment terms:** 100% payment prior to collection, **dimensions (l x w x h) approx.:** 8,000 x 2,500 x 3,000 mm, **weight approx.:** 3,000 kg



■ TRUMPF TRUMATIC L3050 Laser Cutting Machine

TRUMPF TRUMATIC L3050 Laser Cutting Machine

Serial Number: A0230A0773

Laser Power - 5000W

Electric Mains - 400V/50 HZ

Connection Power: 105 kVA

Control Voltage: 24 V

Fuse Required: 3 x 160A

Compressed Air Connection: 7-10 bar

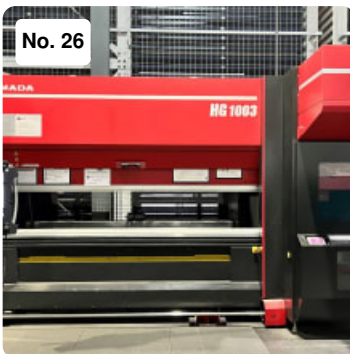
N2 Nitrogen Connection: 30 bar

O2 Oxygen Connection: 20 bar

Raio ON: 9.263h

Laser ON: 4.7870h

Item number: 821522, **Manufacturer:** TRUMPF, **Model / Type:** TRUMATIC L3050, **Year of manufacture:** 2005, **Item available from:** Immediately, **Item condition:** unchecked, **Delivery terms:** FCA, loaded on truck, **Payment terms:** 100% payment prior to collection, **weight approx.:** 12,000 kg, **dimensions (l x w x h) approx.:** 12,000 x 6,000 x 2,400 mm



■ AMADA HG 1003 ATC Hydraulic Press Brake

AMADA HG 1003 ATC Hydraulic Press Brake

MAX Press Force: 1000kn

MAX Stroke: 2500mm

Weight: 10800kg

Noise Level: 74,8 dB (A)

Voltage/Frequency: 400v - 50Hz

Number of Phase: 3

Power: 247 kW

Nominal Current: ATC 5 / HG 35

YEAR: DECEMBER 2021

Hours of Machines ON: 3.124h

Active Program: 1.413h

Working Hours: 336h

Automatic bending compensation

Hybrid bending machine

Hybrid-ecological system

High precision axes (X1.X2.Y1,Y2,Z1,Z2.R)
High-precision rear spindle
CNC AMNC- 3i tactile
Bar Code Reader
BEND NAVI (Software to convert DXF, IGS, DWG into 3D)
Cleaning and maintenance kit
Electric cabinet cooling kit
Instruction and maintenance manual.
AMTS III hydraulic intermediate (WILA type).
Delta X rear bar (2 pcs.)
Motorized pedal
AKAS V safety systems according to CE standards and CE certificate
DIGIPRO
Automatic Tool Change (ATC).
Second additional pedal
Angle measuring device BI-S (1 set)
TDS System (Automatic material thickness detection)
Front and inside LED light
Die holder cleaning system
Includes VPSS 3i Bending SP programming software.

Item number: 821524, **Manufacturer:** AMADA, **Model / Type:** HG 1003 ATC, **Year of manufacture:** 2021, **Item available from:** Immediately, **Item condition:** unchecked, **Delivery terms:** FCA, loaded on truck, **Payment terms:** 100% payment prior to collection, **Max. pressing force:** 100 to, **weight approx.:** 10,500 kg, **dimensions (l x w x h) approx.:** 7,062 x 3,156 x 2,997 mm



No. 50

■ GORNATI LEGOR 250 Lathe

GORNATI LEGOR 250 Lathe
Serial no. 28968/A

Item number: 781308, **Manufacturer:** GORNATI, **Model / Type:** LEGOR 250, **Year of manufacture:** 1968, **Item available from:** Immediately, **Item condition:** unchecked, **Delivery terms:** FCA Amieira, Marinha Grande, loaded on truck, **Payment terms:** 100% payment prior to collection, **weight approx.:** 2,300 kg, **dimensions (l x w x h) approx.:** 3,200 x 1,200 x 1,320 mm



■ GER RS-500 Tangential Grinding Machine

GER RS-500 Tangential Grinding Machine

500x200mm magnetic plate

Longitudinal travel: 500mm

Transversal travel: 400mm

Vertical travel: 400mm

Grindstone: 250mm

Serial number 85/26

Item number: 781306, **Manufacturer:** GER, **Model / Type:** RS-500, **Year of manufacture:** 1995, **Item available from:** Immediately, **Item condition:** unchecked, **Delivery terms:** FCA Amieira, Marinha Grande, loaded on truck, **Payment terms:** 100% payment prior to collection, **weight approx.:** 2,000 kg, **dimensions (l x w x h) approx.:** 1,400 x 1,820 x 2,270 mm



■ ACIERA F4 Universal Tool Milling Machine

Aciera F4 Universal Tool Milling Machine with digital

Table length 800 mm

Table width 250 mm

Longitudinal stroke (X axis) 400 mm

Transverse stroke (y axis) 175 mm

Vertical stroke (z axis) 450 mm

Spindle Speeds:

continuously

from 50 rpm to 3400 rpm

Cone on spindle 30 ISO

Feeds continuously:

Longitudinal from

12 mm / min to 360 mm / min

Vertical from 12

mm / min to 360 mm / min

Sleeve vertical travel: 60 mm

Fast forwards:

Longitudinal 1.8 m / min

Vertical 1.8 m / min

Voltage 50 Hz 3x380 volts

2.5 HP motor output

Item number: 781315, **Manufacturer:** ACIERA, **Model / Type:** F4, **Year of manufacture:** 1978, **Item available from:** Immediately, **Item condition:** unchecked, **Delivery terms:** FCA Amieira, Marinha Grande, loaded on truck, **Payment terms:** 100% payment prior to collection, **dimensions (l x w x h) approx.:** 1,200 x 900 x 1,600 mm, **weight approx.:** 900 kg



■ FRIEDRICH DECKEL FP 2 LB Tool Milling Machine

FRIEDRICH DECKEL FP 2 LB Tool Milling Machine

Serial number 0554

TECHNICAL SPECIFICATIONS

Digital display: 3 - axis digital display NEW

Travel:

X axis: approx. 800 mm

Y axis: approx. 300 mm

Z axis: approx. 400 mm

Table mounting surface: approx. 1000 x 440 mm

Spindle:

Speed range: approx. 40 - 2000 rpm

Tool holder: ISO 40

Motor power: about 2.2 kW

Tool clamping: manual

Feeds & rapid traverse: in all 3 axes

Feed range: approx. 10 - 500 mm / min

Rapid travels: approx. 1.5 m / min

EQUIPMENT

- Vertical & Horizontal milling device
- Coolant device
- angle milling head with drilling quill (stroke: approx. 100 mm)
- Complete machine documentation
- Central lubrication
- Various clamping keys
- Spindle protection cap
- Z - bellows

Approx. 1975

Item number: 781380, **Manufacturer:** FRIEDRICH DECKEL, **Model / Type:** FP 2 LB,

Year of manufacture: 1975, **Item available from:** Immediately, **Item condition:**

unchecked, **Delivery terms:** FCA Amieira, Marinha Grande, loaded on truck, **Payment**

terms: 100% payment prior to collection, **dimensions (l x w x h) approx.:** 2,000 x 1,800 x 1,900 mm, **weight approx.:** 2,200 kg



No. 54

■ FRIEDRICH DECKEL FP 33 Toolrom Milling Machine

DECKEL FP 33 Tool Room Milling Machine – Universal

X/Y/Z- 1000x400x600 mm

Table clamping surface 1200 x 640 mm

Turning speed range 31,5 - 1600 U/min

Tool taper ISO 50

Power capacity 5,5 kW

Feed range 8 - 400 mm/min

Rapid traverse 1600 mm/min

Total power requirement 8 kW

Item number: 781312, **Manufacturer:** FRIEDRICH DECKEL, **Model / Type:** FP 33, **Item available from:** Immediately, **Item condition:** unchecked, **Delivery terms:** FCA Amieira, Marinha Grande, loaded on truck, **Payment terms:** 100% payment prior to collection, **weight approx.:** 4,500 kg, **dimensions (l x w x h) approx.:** 2,000 x 1,700 x 2,000 mm



No. 55

■ PALMARY IG-150-NC PALMARY IG-150-NC Grinding Machine

PALMARY IG-150-NC Grinding Machine

Make no. 0604012

Machine no. 150049

Grinding capacity da 6 a 200 mm

Max. workpiece lenght 150 mm

Swivelling over table diam. 400 mm

Workhead cover swivelling diam. 280 mm

Max table traverse 400 mm

Max table feedeing speed z-axis 10 m/min

Spindle speed 0-550 min⁻¹

Max x-axis feed speed 5 m/min

X-axis minimum travel unit 0.001 mm

Item number: 781314, **Manufacturer:** PALMARY, **Model / Type:** IG-150-NC, **Year of manufacture:** 2006, **Item available from:** Immediately, **Item condition:** unchecked, **Delivery terms:** FCA Amieira, Marinha Grande, loaded on truck, **Payment terms:** 100% payment prior to collection, **weight approx.:** 2,000 kg, **dimensions (l x w x h) approx.:** 3,100 x 1,760 x 1,730 mm



No. 56

■ Aprox. 1.000 pieces (Milling tools ISO 50 + Lathe tools ISO 45)

Aprox. 1.000 pieces

Milling tools ISO 50 + Lathe tools ISO 45

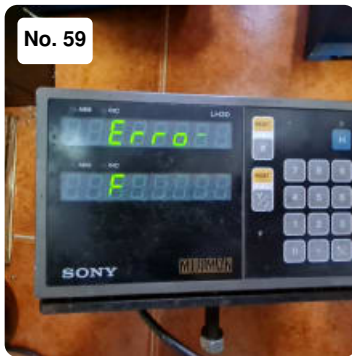
(metal rack not included)

Item number: 781309, **Item available from:** Immediately, **Item condition:** unchecked, **Delivery terms:** FCA Amieira, Marinha Grande, loaded on truck, **Payment terms:** 100% payment prior to collection, **weight approx.:** 2,000 kg, **dimensions (l x w x h) approx.:** 1,200 x 800 x 500 mm



■ NSK Box with 12 NSK micrometers

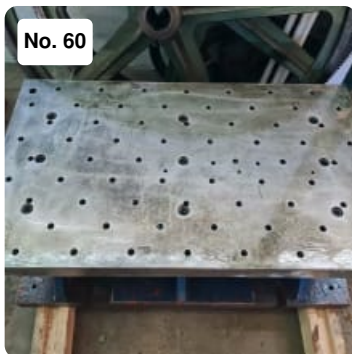
Item number: 781317, **Manufacturer:** NSK, **Item available from:** Immediately, **Item condition:** unchecked, **Delivery terms:** FCA Amieira, Marinha Grande, loaded on truck, **Payment terms:** 100% payment prior to collection, **dimensions (l x w x h) approx.:** 700 x 400 x 400 mm, **weight approx.:** 50 kg



■ SONY MILLMAN Digital Readout

Digital read out for milling machine or lathes
Model: LH30-2T01
2 axis
Without drivers

Item number: 710905, **Manufacturer:** SONY, **Model / Type:** MILLMAN, **Item available from:** immediately, **Item condition:** unchecked, **Delivery terms:** FCA Amieira, Marinha Grande, loaded on truck, **Payment terms:** 100% payment prior to collection, **dimensions (l x w x h) approx.:** 150 x 100 x 150 mm, **weight approx.:** 5 kg



■ Working Table

Working table
Table size: 1000 x 600 x 360 mm
Suitable for milling machines, boring machines, CNC machining centre, Radial drilling machines, etc

Item number: 710914, **Manufacturer:** unknown, **Item available from:** immediately, **Item condition:** unchecked, **Delivery terms:** FCA Amieira, Marinha Grande, loaded on truck, **Payment terms:** 100% payment prior to collection, **dimensions (l x w x h) approx.:** 1,100 x 650 x 400 mm, **weight approx.:** 1,200 kg



■ RÖHM 116H MK6 Revolving Tailstock Live Center

For counter-rolling work on lathes and grinding machines
With maximum concentricity deviation of 0.005 mm

Item number: 710834, **Manufacturer:** RÖHM, **Model / Type:** 116H MK6, **Item available from:** immediately, **Item condition:** unchecked, **Delivery terms:** FCA Amieira, Marinha Grande, loaded on truck, **Payment terms:** 100% payment prior to collection, **weight approx.:** 40 kg, **dimensions (l x w x h) approx.:** 200 x 150 x 180 mm

No. 63



■ ACEC EFA - ACEC Polishing Machine

Double head polishing machine
Model: EFA-ACEC

Item number: 710920, **Manufacturer:** ACEC, **Model / Type:** EFA - ACEC, **Item available from:** immediately, **Item condition:** unchecked, **Delivery terms:** FCA Amieira, Marinha Grande, loaded on truck, **Payment terms:** 100% payment prior to collection, **dimensions (l x w x h) approx.:** 1,200 x 400 x 350 mm, **weight approx.:** 80 kg

No. 64



■ Lathe Face Plate

Lathe face plate
Plate diameter: 640 mm
Inner diameter approx.: 130 mm

Item number: 710924, **Manufacturer:** unknown, **Item available from:** immediately, **Item condition:** unchecked, **Delivery terms:** FCA Amieira, Marinha Grande, loaded on truck, **Payment terms:** 100% payment prior to collection, **dimensions (l x w x h) approx.:** 700 x 700 x 250 mm, **weight approx.:** 100 kg

No. 65



■ HW50-32 Collet Chuck with Collets

Collet chuck with collets
Cone: ISO 50
With 30 collets prox.

Item number: 710928, **Manufacturer:** unknown, **Model / Type:** HW50-32, **Item available from:** immediately, **Item condition:** unchecked, **Delivery terms:** FCA Amieira, Marinha Grande, loaded on truck, **Payment terms:** 100% payment prior to collection, **dimensions (l x w x h) approx.:** 400 x 300 x 150 mm, **weight approx.:** 25 kg

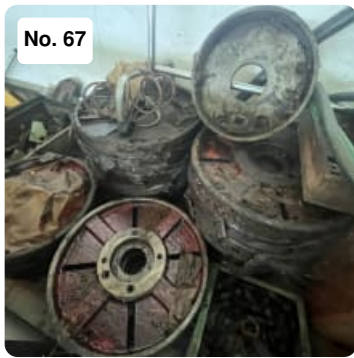
No. 66



■ MH600B Milling Table

Maho Milling Table
Working Table Dimensions: 1000 mm x 400 mm
6 Horizontal T-Slots
T-Slots of 15 mm
Hole-to-Hole Adaptation: 315 mm

Item number: 684813, **Manufacturer:** MAHO, **Model / Type:** MH600B, **Item available from:** immediately, **Item condition:** unchecked, **Delivery terms:** FCA Amieira, Marinha Grande, loaded on truck, **Payment terms:** 100% payment prior to collection, **weight approx.:** 100 kg, **dimensions (l x w x h) approx.:** 1,000 x 400 x 270 mm



■ ZMM CU580 Lathe Working Face plates (x 20 units)

Lathe working plates (x 20 units) to Lathe ZMM CU 580 or similar

Diameter \varnothing : 480 mm

4 Holes

Hole to Hole: 170 mm

Larger Ring: 140 mm

Tree Hole: 85 mm

Height: 60 mm

Item number: 684805, **Manufacturer:** unknown, **Model / Type:** ZMM CU580, **Item available from:** immediately, **Item condition:** unchecked, **Delivery terms:** FCA Amieira, Marinha Grande, loaded on truck, **Payment terms:** 100% payment prior to collection, **weight approx.:** 300 kg, **dimensions (l x w x h) approx.:** 120 x 80 x 450 mm



■ JAHRLS 901-40 Collet Chuck with Collets

Collet chuck with collets

Cone: ISO 50 M24

With 6 collets

Item number: 710933, **Manufacturer:** JAHRLS, **Model / Type:** 901-40, **Item available from:** immediately, **Item condition:** unchecked, **Delivery terms:** FCA Amieira, Marinha Grande, loaded on truck, **Payment terms:** 100% payment prior to collection, **dimensions (l x w x h) approx.:** 350 x 200 x 300 mm, **weight approx.:** 20 kg



■ LAGUN FU2 Knee Type Milling Machine

Working Table Dimensions: 1300 mm x 280 mm

X: 600 mm

Y: 280 mm

Z: 450 mm

Angled Universal Head with Slot

Fast forward

water engine

Water tank

Low Speeds: 28 rpm to 180 rpm

High Speeds: 224 rpm to 1400 rpm

Feedrates of the Axes: 10 to 452

Item number: 684804, **Manufacturer:** LAGUN, **Model / Type:** FU2, **Year of manufacture:** 1989, **Item available from:** immediately, **Item condition:** unchecked, **Delivery terms:** FCA Amieira, Marinha Grande, loaded on truck, **Payment terms:** 100% payment prior to collection, **weight approx.:** 2,000 kg, **dimensions (l x w x h) approx.:** 1,700 x 1,600 x 1,775 mm



■ BOTTARINI GB/T 650 Piston Compressor

Made in Italy
CE Certificate
11 Bar
Serial Number: 62427

Item number: 684798, **Manufacturer:** BOTTARINI, **Model / Type:** GB/T 650, **Year of manufacture:** 2004, **Item available from:** immediately, **Item condition:** unchecked, **Delivery terms:** FCA Amieira, Marinha Grande, loaded on truck, **Payment terms:** 100% payment prior to collection, **dimensions (l x w x h) approx.:** 1,300 x 400 x 550 mm, **weight approx.:** 38 kg



■ ELB SW3HA Hydraulic, Electric and Manual Surface Grinder

Hydraulic, Electric and Manual Grinding Machine
Made in Germany
Table Dimensions: 300 x 150 mm
X: 350 mm
Y: 150 mm
Z: 200 mm
Serial Number: 37050662

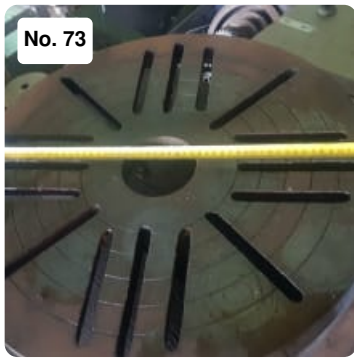
Item number: 684796, **Manufacturer:** ELB, **Model / Type:** SW3HA, **Year of manufacture:** 1980, **Item available from:** immediately, **Item condition:** unchecked, **Delivery terms:** FCA, loaded on truck, **Payment terms:** 100% payment prior to collection, **weight approx.:** 600 kg, **dimensions (l x w x h) approx.:** 1,100 x 1,100 x 1,800 mm



■ CINCINATI SABRE-750 ERH Vertical Machining Center

Controller: Acramatic 8505X
Serial Number: 7029-A00-94-0926
Travels:
X-780 mm
Y-520 mm
Z-580 mm
Made in England

Item number: 684784, **Manufacturer:** CINCINATI, **Model / Type:** SABRE-750 ERH, **Year of manufacture:** 1994, **Item available from:** immediately, **Item condition:** unchecked, **Delivery terms:** FCA Amieira, Marinha Grande, loaded on truck, **Payment terms:** 100% payment prior to collection, **weight approx.:** 4,500 kg, **dimensions (l x w x h) approx.:** 1,900 x 2,200 x 2,500 mm



■ Faceplate

Plate for Lathe Machine
Diameter 550 mm

Item number: 684822, **Manufacturer:** unknown, **Item available from:** immediately, **Item condition:** unchecked, **Delivery terms:** FCA Amieira, Marinha Grande, loaded on truck, **Payment terms:** 100% payment prior to collection, **weight approx.:** 70 kg, **dimensions (l x w x h) approx.:** 550 x 550 x 200 mm



■ RENISHAW Working Tool

Made in UK
Serial Number: D34736 ISO40

Item number: 684819, **Manufacturer:** RENISHAW, **Model / Type:** MP1s, **Item available from:** immediately, **Item condition:** unchecked, **Delivery terms:** FCA Amieira, Marinha Grande, loaded on truck, **Payment terms:** 100% payment prior to collection, **dimensions (l x w x h) approx.:** 80 x 50 x 20 mm, **weight approx.:** 7 kg



■ HYDROVANE 148 / BS5000-99 Compressor

Made in England
Power: 22Kw
Current: 42A
Voltage: 660V
Frequency: 50Hz
3 Phases
Hours of Work: 36453h
Serial Number: DI80LM

Item number: 684799, **Manufacturer:** HYDROVANE, **Model / Type:** 148 / BS5000-99, **Year of manufacture:** 1997, **Item available from:** immediately, **Item condition:** unchecked, **Delivery terms:** FCA Amieira, Marinha Grande, loaded on truck, **Payment terms:** 100% payment prior to collection, **dimensions (l x w x h) approx.:** 1,900 x 700 x 1,000 mm, **weight approx.:** 500 kg



■ BROWN & SHARPE N2 Surface Grinder

With Magnetic table

Item number: 758353, **Manufacturer:** BROWN & SHARPE, **Model / Type:** N2, **Year of manufacture:** 1959, **Item available from:** Immediately, **Item condition:** unchecked, **Delivery terms:** FCA Amieira, Marinha Grande, loaded on truck, **Payment terms:** 100% payment prior to collection, **weight approx.:** 300 kg, **dimensions (l x w x h) approx.:** 1,200 x 860 x 1,960 mm



■ TOS R5 Lathe

Item number: 758370, **Manufacturer:** TOS, **Model / Type:** R5, **Year of manufacture:** 1987, **Item available from:** Immediately, **Item condition:** unchecked, **Delivery terms:** FCA Amieira, Marinha Grande, loaded on truck, **Payment terms:** 100% payment prior to collection, **dimensions (l x w x h) approx.:** 2,800 x 2,200 x 1,500 mm, **weight approx.:** 2,000 kg



■ INGERSOLL RAND RH - 2BS - 13 Piston Compressor

Item number: 758359, **Manufacturer:** INGERSOLL-RAND, **Model / Type:** RH - 2BS - 13, **Year of manufacture:** 1988, **Item available from:** Immediately, **Item condition:** unchecked, **Delivery terms:** FCA Amieira, Marinha Grande, loaded on truck, **Payment terms:** 100% payment prior to collection, **dimensions (l x w x h) approx.:** 1,600 x 600 x 1,000 mm, **weight approx.:** 200 kg



■ WAGNER FCW - 620 Milling Machine

x-travel: 400 mm
y-travel: 300 mm
z-travel: 400 mm
turning speeds: 40 - 2000 U/min
table: 750 x 320
Quill stroke: 60 mm
Thickness of jaw: 160 mm
Feed range: 10 - 500 mm/min
Spindle cone: SK 40
3-axis RSF
Electronic Z503 digital display
Swiveling vertical head +/- 90°
All 3 axes with Feeds, spindle quill (60 mm)
Switchable spindle brake
Coolant system
Bore-feed 0.03; 0.12; 0.06 mm/rev. machine light

Item number: 758372, **Manufacturer:** WAGNER, **Model / Type:** FCW - 620, **Year of manufacture:** 1987, **Item available from:** Immediately, **Item condition:** unchecked, **Delivery terms:** FCA Amieira, Marinha Grande, loaded on truck, **Payment terms:** 100% payment prior to collection, **dimensions (l x w x h) approx.:** 1,300 x 1,500 x 1,700 mm, **weight approx.:** 2,000 kg



■ LANGE VYK Lathe

LANGE VYK Lathe
Turning length 1050 mm
Turning max: 560 mm
Turning slide: 300mm
Bore: 60mm
Number of speeds 4
Speed from N= 500 rpm
Speed till N= 2000 rpm
Electric connection 400 V

Item number: 786355, **Manufacturer:** LANGE, **Model / Type:** VIK, **Item available from:** Immediately, **Item condition:** unchecked, **Delivery terms:** FCA Amieira, Marinha Grande, loaded on truck, **Payment terms:** 100% payment prior to collection, **dimensions (l x w x h) approx.:** 3,000 x 950 x 1,965 mm, **weight approx.:** 3,600 kg



■ ELB SW10 Surface Grinding Machine

ELB SW10 Surface Grinding Machine
German manufacture
Electric and manual hydraulic machine

Magnetic table 900mm x 350mm
Courses:
X: 950mm
Y: 450mm
Z: 500mm

With water tank, two grinding wheel flanges, leveling feet

Item number: 786358, **Manufacturer:** ELB, **Model / Type:** SW10, **Item available from:** Immediately, **Item condition:** unchecked, **Delivery terms:** FCA Amieira, Marinha Grande, loaded on truck, **Payment terms:** 100% payment prior to collection, **weight approx.:** 4,000 kg, **dimensions (l x w x h) approx.:** 2,800 x 2,000 x 2,200 mm



■ STANKO KN (ex-URSS) 16K25 Lathe

STANKO KN (ex-URSS) 16K25 Lathe
Center Height - 250 mm
Max. Length of Job - 1400 mm
Max. Diameter over cross-slide - 290 mm
Chuck Diameter - 250 mm
Spindle Speeds - 12.5 rpm to 1600 rpm
Bed Width - 410 mm

Item number: 786354, **Manufacturer:** KN (EX-URSS), **Model / Type:** 16K25, **Year of manufacture:** 1980, **Item available from:** Immediately, **Item condition:** unchecked, **Delivery terms:** FCA Amieira, Marinha Grande, loaded on truck, **Payment terms:** 100% payment prior to collection, **dimensions (l x w x h) approx.:** 3,060 x 1,150 x 1,450 mm, **weight approx.:** 2,500 kg



■ VIKING Universal Milling Machine

VIKING Universal Milling Machine
Digital readout 3 axes
x:590 mm
y:210 mm
z:425mm

Table surface area 950x230 mm
total power requirement 2 kW
spindle turning speed range automatic 18: 31,5 - 1000 U/min
tool taper: SK 40

Item number: 786359, **Manufacturer:** VIKING, **Item available from:** Immediately, **Item condition:** unchecked, **Delivery terms:** FCA Amieira, Marinha Grande, loaded on truck, **Payment terms:** 100% payment prior to collection, **dimensions (l x w x h) approx.:** 1,350 x 1,540 x 1,920 mm, **weight approx.:** 1,200 kg



■ SYDERIC S 13 SYDERIC S 13 Bench Drilling Machine (2x)

SYDERIC S 13 Bench Drilling Machine (2x)

no. 39800

no. 39801

capacity: 13 mm

number of speeds: 5

speed from N=: 470 rpm

speed till N=: 4200 rpm

electric connection: 400 V

Item number: 786353, **Manufacturer:** SYDERIC, **Model / Type:** S 13, **Item available from:** Immediately, **Item condition:** unchecked, **Delivery terms:** FCA Amieira, Marinha Grande, loaded on truck, **Payment terms:** 100% payment prior to collection, **dimensions (l x w x h) approx.:** 1,200 x 870 x 1,885 mm, **weight approx.:** 450 kg