

Auction Catalogue

Construction Machinery (Spain)

Viewing by appointment only!

Hormilla (La Rioja)
Spain

113 lots

Bidding ends:

Thursday, 27/04/2023, 10:00(local time)

Bids are welcome immediately and can be placed at:

Contact:

Emilio Sobrado
+34 936393895
emilio.sobrado@surplex.com
www.surplex.com

Viewing:

Viewing by appointment only!

Hormilla (La Rioja)
Spain

Monday, **24/04/2023**, from 09:00 to 18:00

Tuesday, **25/04/2023**, from 09:00 to 18:00

Wednesday, **26/04/2023**, from 09:00 to 18:00

Description:

Quality Construction Machines. Renowned brands such as VOLVO, KOMATSU, JCB, GENIE, HAULOTTE, etc.

1. The item list is being continuously updated - please check back regularly!
2. Articles located in our Yard Logroño-Hormilla.

The buyers Premium is variable as follows:

From 0 Eur to 10.000 Eur: 15%

From 10.001 to 25.000 Eur: 8%

From 25.001 to end: 5%

No. 1



■ VOLVO ECR 88 Mini Excavator

- Serial number ECR88Y11560
- Steel track
- Track width 450 mm
- Bucket useful dimensions approx. 1450 x 450 x 350 mm
- Dozer blade 2300 mm long
- Maximum horizontal reach 7240 mm
- Digging depth 4570 mm
- Maximum cutting height 7000 mm
- Maximum loading height 5120 mm
- Tear-out force 56 kN
- VOLVO D3.4CAE2EC4U engine: 4 cylinders, displacement 3319 cc, power 44.40 KW
- Working hours according to counter 12363
- CE Standards
- 2 buckets with approximate dimensions 750 x 700 x 530 mm and 350 x 800 x 490 mm are included
- **IMPORTANT:** The buyer is responsible for everything related to the loading of this equipment

Item number: 782226, **Manufacturer:** VOLVO, **Model / Type:** ECR 88, **Year of manufacture:** 2006, **Item available from:** Immediately, **Item condition:** unchecked, **Delivery terms:** EXW Hormilla (La Rioja), ex foundation, unpackaged, **Payment terms:** 100% payment prior to collection, **dimensions (l x w x h) approx.:** 6,450 x 2,320 x 2,710 mm, **weight approx.:** 9,000 kg

No. 2



■ GENIE S 65 Diesel Telescopic Boom Lift

- Diesel telescopic boom lift
- Serial number S6005-10879
- Lifting capacity 227 kg
- Maximum platform lifting height approx. 19800 mm
- Maximum horizontal reach approx. 17100 mm
- Platform dimensions approx. 2350 x 1100 mm
- 4 wheel drive
- DEUTZ D 2011 diesel engine: 3 cylinders, power 35.80 KW
- Working hours according to counter 1817
- CE Standards
- **IMPORTANT:** The buyer is responsible for everything related to the loading of this equipment

Item number: 817655, **Manufacturer:** GENIE, **Model / Type:** S 65, **Year of manufacture:** 2005, **Item available from:** Immediately, **Item condition:** unchecked, **Delivery terms:** EXW Hormilla (La Rioja), ex foundation, unpackaged, **Payment terms:** 100% payment prior to collection, **dimensions (l x w x h) approx.:** 11,000 x 2,500 x 2,800 mm, **weight approx.:** 10,090 kg

No. 3



■ HAULOTTE H 18 SX Diesel Scissor Lift Platform

- Diesel scissor lift platform
- Serial number CD113381
- Lifting capacity 500 kg
- Maximum platform lifting height approx. 16000 mm
- Platform dimensions approx. 4000 x 1890 mm
- Extended platform dimensions approx. 6000 x 1890 mm
- Solid tyres
- 4 wheel drive
- HATZ 2L41C 166H diesel engine: displacement 1716 cc, power 24 KW
- Working hours according to counter 2270
- CE Standards
- **IMPORTANT:** The buyer is responsible for everything related to the loading of this equipment

Item number: 817677, **Manufacturer:** HAULOTTE, **Model / Type:** H 18 SX, **Year of manufacture:** 2007, **Item available from:** Immediately, **Item condition:** unchecked, **Delivery terms:** EXW Hormilla (La Rioja), ex foundation, unpackaged, **Payment terms:** 100% payment prior to collection, **dimensions (l x w x h) approx.:** 4,200 x 2,250 x 3,100 mm, **weight approx.:** 7,300 kg

No. 4



■ HAULOTTE HA 18 SPX Diesel Articulated Boom Lift

- Diesel articulated boom lift
- Serial number AD109647
- Lifting capacity 230 kg
- Maximum platform lifting height approx. 15300 mm
- Maximum horizontal reach approx. 10600 mm
- Platform dimensions approx. 1800 x 800 mm
- 4 wheel drive
- DEUTZ F 3L 2011 diesel engine: 3 cylinders, displacement 2332 cc, power 30.90 KW
- Working hours according to counter 755
- CE Standards
- **IMPORTANT:** The buyer is responsible for everything related to the loading of this equipment

Item number: 817661, **Manufacturer:** HAULOTTE, **Model / Type:** HA 18 SPX, **Year of manufacture:** 2005, **Item available from:** Immediately, **Item condition:** unchecked, **Delivery terms:** EXW Hormilla (La Rioja), ex foundation, unpackaged, **Payment terms:** 100% payment prior to collection, **dimensions (l x w x h) approx.:** 6,650 x 2,300 x 2,200 mm, **weight approx.:** 7,900 kg

No. 5



■ HAULOTTE HA 15 IP Electric Articulated Boom Lift

- Electric articulated boom lift
- Serial number AE105057
- Lifting capacity 230 kg
- Maximum platform lifting height approx. 12870 mm
- Maximum horizontal reach approx. 8450 mm
- Platform dimensions approx. 1150 x 800 mm
- Solid tyres
- Battery 48 V, with battery charger
- Working hours according to counter 91
- CE Standards
- **IMPORTANT:** The buyer is responsible for everything related to the loading of this equipment

Item number: 817643, **Manufacturer:** HAULOTTE, **Model / Type:** HA 15 IP, **Year of manufacture:** 2007, **Item available from:** Immediately, **Item condition:** unchecked, **Delivery terms:** EXW Hormilla (La Rioja), ex foundation, unpackaged, **Payment terms:** 100% payment prior to collection, **dimensions (l x w x h) approx.:** 6,600 x 1,500 x 2,000 mm, **weight approx.:** 7,300 kg

No. 6



■ VOLVO L 110 H Wheel Loader

- Wheel loader
- Serial number VCEL110HC00010859
- Standard bucket capacity approx. 3 m³
- Maximum unloading height 4030 mm
- Lifting force 150.60 kN
- Turning radius 5730 mm
- Maximum Speed 40 km/h
- Standard tyres 23.5 R25
- VOLVO D8J engine: 8 cylinders, displacement 7755 cc, power 191 KW
- Working hours according to counter 5592
- CE Standards
- **IMPORTANT:** The buyer is responsible for everything related to the loading of this equipment

Item number: 789765, **Manufacturer:** VOLVO, **Model / Type:** L 110 H, **Year of manufacture:** 2016, **Item available from:** Immediately, **Item condition:** unchecked, **Delivery terms:** EXW Hormilla (La Rioja), ex foundation, unpackaged, **Payment terms:** 100% payment prior to collection, **dimensions (l x w x h) approx.:** 8,500 x 2,600 x 3,700 mm, **weight approx.:** 20,700 kg

No. 7



■ HIMOINSA HFW 160 T 5 Diesel Electric Generator

- Diesel generator, power generator, electric generator
- Serial number 7111860
- Voltage: 400 V / 230 V / 50 Hz
- Power 159.25 KVA - 127.40 KW
- IVECO NEF67TM3A turbo-diesel engine: 6 cylinders, displacement 6700 cc, power 135.90 KW
- Soundproof
- Operating hours according to the counter 5744

Item number: 817647, **Manufacturer:** HIMOINSA, **Model / Type:** HFW 160 T 5, **Year of manufacture:** 2007, **Item available from:** Immediately, **Item condition:** unchecked, **Delivery terms:** FCA Hormilla (La Rioja), loaded on truck, **Payment terms:** 100% payment prior to collection, **dimensions (l x w x h) approx.:** 4,000 x 1,400 x 1,800 mm, **weight approx.:** 2,363 kg

No. 8



■ HIMOINSA HFW 100 T 5 Diesel Electric Generator

- Diesel generator, power generator, electric generator
- Serial number 6107864
- Voltage: 400 V / 230 V / 50 Hz
- Power 97.50 KVA - 78 KW
- IVECO NEF45TM2A turbo-diesel engine: 4 cylinders, displacement 4500 cc, power 88.60 KW
- Soundproof
- Operating hours according to the counter 8507

Item number: 817652, **Manufacturer:** HIMOINSA, **Model / Type:** HFW 100 T 5, **Year of manufacture:** 2006, **Item available from:** Immediately, **Item condition:** unchecked, **Delivery terms:** FCA Hormilla (La Rioja), loaded on truck, **Payment terms:** 100% payment prior to collection, **dimensions (l x w x h) approx.:** 3,000 x 1,200 x 1,500 mm, **weight approx.:** 2,000 kg

No. 9



■ ATLAS COPCO XAHS 186 AB AC LEG Mobile Diesel Screw Compressor

- Mobile diesel screw compressor
- Serial number AIP377816
- DEUTZ diesel engine: 4 cylinders, power 104 KW
- Maximum working pressure 12 bar
- Air flow 10380 l/min
- Total operating hours according to the counter 1828

Item number: 817656, **Manufacturer:** ATLAS COPCO, **Model / Type:** XAHS 186 AB AC LEG, **Year of manufacture:** 2001, **Item available from:** Immediately, **Item condition:** unchecked, **Delivery terms:** FCA Hormilla (La Rioja), loaded on truck, **Payment terms:** 100% payment prior to collection, **dimensions (l x w x h) approx.:** 5,000 x 1,500 x 1,650 mm, **weight approx.:** 1,900 kg

No. 10



■ WINAIR SC 1500 HDE Mobile Gasoline Screw Compressor

- Mobile gasoline screw compressor
- Serial number 0815594
- HONDA gasoline engine: power 13.25 KW
- Working pressure 7 bar
- Air flow 1500 l/min
- Total operating hours according to the counter 7107

Item number: 817649, **Manufacturer:** WINAIR, **Model / Type:** SC 1500 HDE, **Year of manufacture:** 2000, **Item available from:** Immediately, **Item condition:** unchecked, **Delivery terms:** FCA Hormilla (La Rioja), loaded on truck, **Payment terms:** 100% payment prior to collection, **dimensions (l x w x h) approx.:** 1,000 x 800 x 800 mm, **weight approx.:** 150 kg

No. 11



■ POWER TOWERS PECO-LIFT Manual vertical Mast

Serial Number: 5430813G
Weight: 150g
Payload: 150kg
No. Personas + allowance: 1 pax
Working Height: 3500mm
Max. Manual Force: 200N
Indoor use only
CE Standard

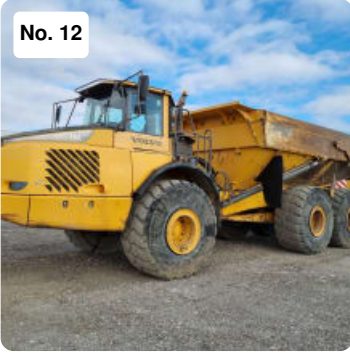
IMPORTANT:

The customer is responsible for all the loading related to the equipment.

Dimensions and weights are approximate.

Item number: 789421, **Manufacturer:** POWER TOWERS, **Model / Type:** PECO-LIFT, **Year of manufacture:** 2013, **Item available from:** Immediately, **Item condition:** unchecked, **Delivery terms:** EXW Hormilla (La Rioja), ex foundation, unpackaged, **Payment terms:** 100% payment prior to collection, **dimensions (l x w x h) approx.:** 985 x 700 x 1,550 mm, **weight approx.:** 180 kg

No. 12



■ VOLVO A 40 E Articulated Dumptruck

Identification Number: VCE0A40EE00011544

6x6

Tail Gate

AutoLube

Reverse Camera, A/C

Working Hours 21.065

IMPORTANT:

The customer is responsible for all the loading related to the equipment.

Dimensions and weights are approximate.

Item number: 767076, **Manufacturer:** VOLVO, **Model / Type:** A 40 E, **Year of manufacture:** 2008, **Item available from:** Immediately, **Item condition:** unchecked, **Delivery terms:** EXW Hormilla (La Rioja), ex foundation, unpackaged, **Payment terms:** 100% payment prior to collection, **dimensions (l x w x h) approx.:** 11,300 x 3,750 x 3,430 mm, **weight approx.:** 30,200 kg

No. 13

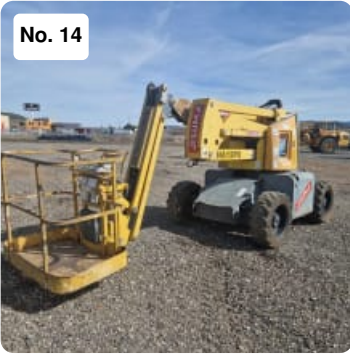


■ GENIE GS 4047 Electric Scissor Lift Platform

- Electric scissor lift platform
- Serial number GS4713C-915
- Lifting capacity 350 kg
- Maximum platform lifting height approx. 11700 mm
- Platform dimensions approx. 2260 x 1160 mm
- Solid tyres
- 2 wheel drive
- Battery 24 V
- Working hours according to counter 518
- CE Standards
- IMPORTANT: The buyer is responsible for everything related to the loading of this equipment

Item number: 817660, **Manufacturer:** GENIE, **Model / Type:** GS 4047, **Year of manufacture:** 2013, **Item available from:** Immediately, **Item condition:** unchecked, **Delivery terms:** EXW Hormilla (La Rioja), ex foundation, unpackaged, **Payment terms:** 100% payment prior to collection, **dimensions (l x w x h) approx.:** 2,440 x 1,200 x 2,540 mm, **weight approx.:** 3,221 kg

No. 14



■ HAULOTTE HA 12 PX Diesel Articulated Boom Lift

- Diesel articulated boom lift
- Serial number AD115004
- Lifting capacity 230 kg
- Maximum platform lifting height approx. 10400 mm
- Maximum horizontal reach approx. 6600 mm
- Platform dimensions approx. 1500 x 800 mm
- 4 wheel drive
- LOMBARDINI LDW 1404/B6 diesel engine: 4 cylinders, displacement 1372 cc, power 21 KW
- Working hours according to counter 2880
- CE Standards
- IMPORTANT: The buyer is responsible for everything related to the loading of this equipment

Item number: 817645, **Manufacturer:** HAULOTTE, **Model / Type:** HA 12 PX, **Year of manufacture:** 2007, **Item available from:** Immediately, **Item condition:** unchecked, **Delivery terms:** EXW Hormilla (La Rioja), ex foundation, unpackaged, **Payment terms:** 100% payment prior to collection, **dimensions (l x w x h) approx.:** 6,400 x 1,850 x 2,100 mm, **weight approx.:** 5,500 kg

No. 15



■ GENIE S 65 Diesel Telescopic Boom Lift

- Diesel telescopic boom lift
- Serial number S6005-10871
- Lifting capacity 227 kg
- Maximum platform lifting height approx. 19800 mm
- Maximum horizontal reach approx. 17100 mm
- Platform dimensions approx. 2350 x 1100 mm
- 4 wheel drive
- DEUTZ D 2011 diesel engine: 3 cylinders, power 35.80 KW
- Working hours according to counter 1785
- CE Standards
- IMPORTANT: The buyer is responsible for everything related to the loading of this equipment

Item number: 817650, **Manufacturer:** GENIE, **Model / Type:** S 65, **Year of manufacture:** 2005, **Item available from:** Immediately, **Item condition:** unchecked, **Delivery terms:** EXW Hormilla (La Rioja), ex foundation, unpackaged, **Payment terms:** 100% payment prior to collection, **dimensions (l x w x h) approx.:** 11,000 x 2,500 x 2,800 mm, **weight approx.:** 10,090 kg

No. 16



■ HAULOTTE HA 18 SPX Diesel Articulated Boom Lift

- Diesel articulated boom lift
- Serial number AD112072
- Lifting capacity 230 kg
- Maximum platform lifting height approx. 15300 mm
- Maximum horizontal reach approx. 10600 mm
- Platform dimensions approx. 1800 x 800 mm
- 4 wheel drive
- DEUTZ F 3L 2011 diesel engine: 3 cylinders, displacement 2332 cc, power 30.90 KW
- Working hours according to counter 5584
- CE Standards
- IMPORTANT: The buyer is responsible for everything related to the loading of this equipment

Item number: 817671, **Manufacturer:** HAULOTTE, **Model / Type:** HA 18 SPX, **Year of manufacture:** 2006, **Item available from:** Immediately, **Item condition:** unchecked, **Delivery terms:** EXW Hormilla (La Rioja), ex foundation, unpackaged, **Payment terms:** 100% payment prior to collection, **dimensions (l x w x h) approx.:** 6,650 x 2,300 x 2,200 mm, **weight approx.:** 7,900 kg

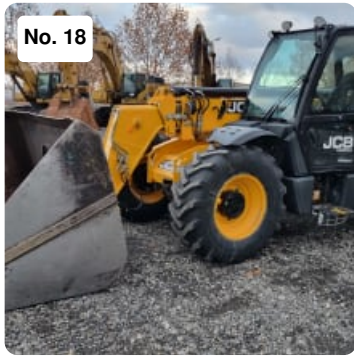
No. 17



■ GENIE GS 4047 Electric Scissor Lift Platform

- Electric scissor lift platform
- Serial number GS4713C-956
- Lifting capacity 350 kg
- Maximum platform lifting height approx. 11700 mm
- Platform dimensions approx. 2260 x 1160 mm
- Solid tyres
- 2 wheel drive
- Battery 24 V
- Working hours according to counter 462
- CE Standards
- IMPORTANT: The buyer is responsible for everything related to the loading of this equipment

Item number: 817667, **Manufacturer:** GENIE, **Model / Type:** GS 4047, **Year of manufacture:** 2013, **Item available from:** Immediately, **Item condition:** unchecked, **Delivery terms:** EXW Hormilla (La Rioja), ex foundation, unpackaged, **Payment terms:** 100% payment prior to collection, **dimensions (l x w x h) approx.:** 2,440 x 1,200 x 2,540 mm, **weight approx.:** 3,221 kg



■ JCB 535-95 AGRI SUPER Telehandler

- Telehandler
- Serial number JCB5XB3JVJ2729603
- Spanish registration number: E 2197 BGY
- Maximum load capacity 3500 kg
- Maximum lifting height 9500 mm
- Working hours according to the counter 5931
- JCB EcoMax engine: displacement 4399 cc, power 93 KW
- CE Standards
- IMPORTANT:
- The buyer is responsible for everything related to the loading of this equipment
- Surplex will deliver this vehicle to the buyer with a Sale Notification in DGT (Spanish traffic authorities). This Sale Notification will be invoiced separately for the amount of €100

Item number: 789756, **Manufacturer:** JCB, **Model / Type:** 535-95 AGRI SUPER, **Year of manufacture:** 2018, **Item available from:** Immediately, **Item condition:** unchecked, **Delivery terms:** EXW Hormilla (La Rioja), ex foundation, unpackaged, **Payment terms:** 100% payment prior to collection, **dimensions (l x w x h) approx.:** 5,000 x 2,300 x 2,490 mm, **weight approx.:** 8,400 kg



■ FIAT E 30 N Electric Forklift

- Electric forklift, fork hoist, fork truck, lift truck
- Serial number 1864160
- Lifting capacity 3000 kg
- Maximum lift height 3600 mm
- Minimum height passage 2360 mm
- Fork length 1010 mm
- Maximum fork width 1000 mm
- Solid tyres
- Operating hours according to the counter 90234
- Battery 72 V, with battery charger FULMEN
- IMPORTANT!: This forklift DOES NOT work due to electrical failure
- IMPORTANT: The buyer is responsible for everything related to the loading of this equipment

Item number: 782213, **Manufacturer:** FIAT, **Model / Type:** E 30 N, **Year of manufacture:** 1987, **Item available from:** Immediately, **Item condition:** unchecked, **Delivery terms:** EXW Hormilla (La Rioja), ex foundation, unpackaged, **Payment terms:** 100% payment prior to collection, **dimensions (l x w x h) approx.:** 3,310 x 1,150 x 2,360 mm, **weight approx.:** 2,000 kg

No. 20



■ HIMOINSA HFW 75 T 5 Diesel Electric Generator

- Diesel generator, power generator, electric generator
- Serial number 7105025
- Voltage: 400 V / 230 V / 50 Hz
- Power 72.50 KVA - 58 KW
- DBT HA 200 SD/4 alternator
- IVECO NEF45SM3 turbo-diesel engine: 4 cylinders, displacement 4500 cc, power 79.90 KW
- Soundproof

Item number: 817675, **Manufacturer:** HIMOINSA, **Model / Type:** HFW 75 T 5, **Year of manufacture:** 2007, **Item available from:** Immediately, **Item condition:** unchecked, **Delivery terms:** FCA Hormilla (La Rioja), loaded on truck, **Payment terms:** 100% payment prior to collection, **dimensions (l x w x h) approx.:** 3,000 x 1,200 x 1,500 mm, **weight approx.:** 1,550 kg

No. 21



■ HIMOINSA HFW 60 T 5 Diesel Electric Generator

- Diesel generator, power generator, electric generator
- Serial number 6107225
- Voltage: 400 V / 230 V / 50 Hz
- Power 59.38 KVA - 47.50 KW
- DBT HA 200 SD/4 alternator
- IVECO NEF45SM1F turbo-diesel engine: 4 cylinders, displacement 4500 cc, power 60 KW
- Soundproof
- Operating hours according to the counter 4431

Item number: 817648, **Manufacturer:** HIMOINSA, **Model / Type:** HFW 60 T 5, **Year of manufacture:** 2006, **Item available from:** Immediately, **Item condition:** unchecked, **Delivery terms:** FCA Hormilla (La Rioja), loaded on truck, **Payment terms:** 100% payment prior to collection, **dimensions (l x w x h) approx.:** 3,000 x 1,200 x 1,500 mm, **weight approx.:** 1,450 kg

No. 22



■ COMPAIR C 100 Screw Compressor with Diesel Engine

- Screw compressor with diesel engine
- Serial number WCA1K012321110158
- Motor power 77 KW-2400 rpm
- DAIMLER CHRYSLER 0M364A diesel engine
- Working pressure 7 bar
- Air flow 10500 l/min

Item number: 787795, **Manufacturer:** COMPAIR, **Model / Type:** C 100, **Year of manufacture:** 2002, **Item available from:** Immediately, **Item condition:** unchecked, **Delivery terms:** FCA Hormilla (La Rioja), loaded on truck, **Payment terms:** 100% payment prior to collection, **dimensions (l x w x h) approx.:** 2,960 x 1,300 x 1,940 mm, **weight approx.:** 2,300 kg



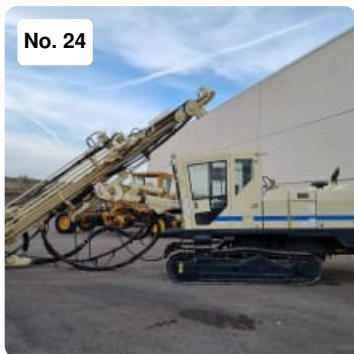
■ POWER TOWERS PECO-LIFT Manual vertical Mast

Serial Number: 2215012G
 Weight: 150g
 Payload: 150kg
 No. pax + allowance: 1 pax
 Working Height: 3500mm
 Max. Manual Force: 200N
 Indoor use only
 CE Standard

IMPORTANT:

The customer is responsible for all the loading related to the equipment.
 Dimensions and weights are approximate.

Item number: 789412, **Manufacturer:** POWER TOWERS, **Model / Type:** PECO-LIFT, **Year of manufacture:** 2012, **Item available from:** Immediately, **Item condition:** unchecked, **Delivery terms:** EXW Hormilla (La Rioja), ex foundation, unpackaged, **Payment terms:** 100% payment prior to collection, **dimensions (l x w x h) approx.:** 985 x 700 x 1,550 mm, **weight approx.:** 180 kg

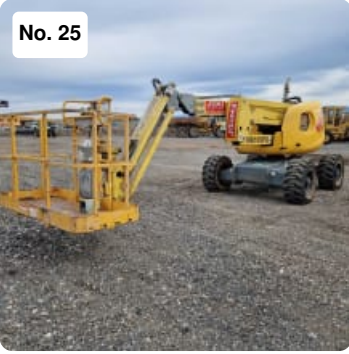


■ FURUKAWA HCR 1200 ED Hydraulic Crawler Drill

- Serial number 1352192
- Steel track
- Track width 330 mm
- Borehole drill diameter from 76 mm up to 102 mm
- Feed pulling force 29.50 KN
- Feed pushing force 23.10 KN
- Engine power 149 KW
- FORALIM 2-4G digital drilling recorder
- Working hours according to counter 7940
- IMPORTANT: The buyer is responsible for everything related to the loading of this equipment

Item number: 782223, **Manufacturer:** FURUKAWA, **Model / Type:** HCR 1200 ED, **Year of manufacture:** 2006, **Item available from:** Immediately, **Item condition:** unchecked, **Delivery terms:** EXW Hormilla (La Rioja), ex foundation, unpackaged, **Payment terms:** 100% payment prior to collection, **dimensions (l x w x h) approx.:** 10,900 x 2,700 x 3,700 mm, **weight approx.:** 13,900 kg

No. 25



■ HAULOTTE HA 16 SPX Diesel Articulated Boom Lift

- Diesel articulated boom lift
- Serial number AD114793
- Lifting capacity 230 kg
- Maximum platform lifting height approx. 14000 mm
- Maximum horizontal reach approx. 9100 mm
- Platform dimensions approx. 1800 x 800 mm
- 4 wheel drive
- DEUTZ F 3L 2011 diesel engine: 3 cylinders, displacement 2332 cc, power 30.90 KW
- Working hours according to counter 5209
- CE Standards
- IMPORTANT: The buyer is responsible for everything related to the loading of this equipment

Item number: 817665, **Manufacturer:** HAULOTTE, **Model / Type:** HA 16 SPX, **Year of manufacture:** 2006, **Item available from:** Immediately, **Item condition:** unchecked, **Delivery terms:** EXW Hormilla (La Rioja), ex foundation, unpackaged, **Payment terms:** 100% payment prior to collection, **dimensions (l x w x h) approx.:** 5,250 x 2,250 x 2,200 mm, **weight approx.:** 6,700 kg

No. 26



■ GENIE GS 4047 Electric Scissor Lift Platform

- Electric scissor lift platform
- Serial number GS4713C-877
- Lifting capacity 350 kg
- Maximum platform lifting height approx. 11700 mm
- Platform dimensions approx. 2260 x 1160 mm
- Solid tyres
- 2 wheel drive
- Battery 24 V
- Working hours according to counter 578
- CE Standards
- IMPORTANT: The buyer is responsible for everything related to the loading of this equipment

Item number: 817678, **Manufacturer:** GENIE, **Model / Type:** GS 4047, **Year of manufacture:** 2013, **Item available from:** Immediately, **Item condition:** unchecked, **Delivery terms:** EXW Hormilla (La Rioja), ex foundation, unpackaged, **Payment terms:** 100% payment prior to collection, **dimensions (l x w x h) approx.:** 2,440 x 1,200 x 2,540 mm, **weight approx.:** 3,221 kg

No. 27



■ HAULOTTE HA 12 IP Electric Articulated Boom Lift

- Electric articulated boom lift
- Serial number AE105008
- Lifting capacity 230 kg
- Maximum platform lifting height approx. 10000 mm
- Maximum horizontal reach approx. 6500 mm
- Platform dimensions approx. 1200 x 800 mm
- Solid tyres
- Battery 48 V, with battery charger
- Working hours according to counter 828
- CE Standards
- **IMPORTANT:** The buyer is responsible for everything related to the loading of this equipment

Item number: 817644, **Manufacturer:** HAULOTTE, **Model / Type:** HA 12 IP, **Year of manufacture:** 2007, **Item available from:** Immediately, **Item condition:** unchecked, **Delivery terms:** EXW Hormilla (La Rioja), ex foundation, unpackaged, **Payment terms:** 100% payment prior to collection, **dimensions (l x w x h) approx.:** 6,000 x 1,300 x 2,100 mm, **weight approx.:** 5,900 kg

No. 28



■ GENIE S 85 Diesel Telescopic Boom Lift

- Diesel telescopic boom lift
- Serial number S85-2411
- Lifting capacity 227 kg
- Maximum platform lifting height approx. 25900 mm
- Maximum horizontal reach approx. 23400 mm
- Platform dimensions approx. 2000 x 700 mm
- 4 wheel drive
- DEUTZ B/FL 1011F diesel engine
- Working hours according to counter 7547
- CE Standards
- **IMPORTANT:** The buyer is responsible for everything related to the loading of this equipment

Item number: 817679, **Manufacturer:** GENIE, **Model / Type:** S 85, **Year of manufacture:** 2000, **Item available from:** Immediately, **Item condition:** unchecked, **Delivery terms:** EXW Hormilla (La Rioja), ex foundation, unpackaged, **Payment terms:** 100% payment prior to collection, **dimensions (l x w x h) approx.:** 12,200 x 2,500 x 2,800 mm, **weight approx.:** 16,900 kg

No. 29



■ HAULOTTE H 15 SX Diesel Scissor Lift Platform

- Diesel scissor lift platform
- Serial number CD113000
- Lifting capacity 500 kg
- Maximum platform lifting height approx. 13000 mm
- Platform dimensions approx. 4000 x 1890 mm
- Extended platform dimensions approx. 6000 x 1890 mm
- Solid tyres
- 4 wheel drive
- HATZ diesel engine: power 24 KW
- Working hours according to counter 2277
- CE Standards
- **IMPORTANT:** The buyer is responsible for everything related to the loading of this equipment

Item number: 817653, **Manufacturer:** HAULOTTE, **Model / Type:** H 15 SX, **Year of manufacture:** 2007, **Item available from:** Immediately, **Item condition:** unchecked, **Delivery terms:** EXW Hormilla (La Rioja), ex foundation, unpackaged, **Payment terms:** 100% payment prior to collection, **dimensions (l x w x h) approx.:** 4,120 x 2,250 x 2,770 mm, **weight approx.:** 6,340 kg

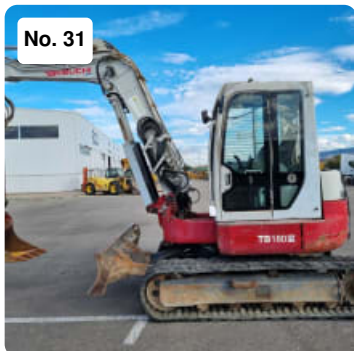
No. 30



■ HYUNDAI ROBEX 200 W 7 Wheeled Excavator

- Wheeled excavator
- Spanish registration number: E 4691 BDP
- Serial number N60410655
- Maximum horizontal reach 9480 mm
- Digging depth 6700 mm
- Tear-out force 130 kN
- CUMMINS B5.9C engine, power 114 KW
- Working hours according to counter 12443
- CE Standards
- BUCKET is NOT included
- **IMPORTANT:**
 - The buyer is responsible for everything related to the loading of this equipment
 - Surplex will deliver this vehicle to the buyer with a Sale Notification in DGT (Spanish traffic authorities). This Sale Notification will be invoiced separately for the amount of €100

Item number: 789276, **Manufacturer:** HYUNDAI, **Model / Type:** ROBEX 200 W 7, **Year of manufacture:** 2006, **Item available from:** Immediately, **Item condition:** unchecked, **Delivery terms:** EXW Hormilla (La Rioja), ex foundation, unpackaged, **Payment terms:** 100% payment prior to collection, **dimensions (l x w x h) approx.:** 9,600 x 2,490 x 3,360 mm, **weight approx.:** 20,500 kg



■ TAKEUCHI TB 180 FR Mini Excavator

- Serial number 17840379
- Rubber track
- Track width 450 mm
- Bucket useful dimensions approx. 550 x 800 x 500 mm
- Dozer blade 2300 mm long
- Maximum Speed 5.80 km/h
- Maximum horizontal reach 7035 mm
- Digging depth 4545 mm
- Maximum loading height 4650 mm
- YANMAR 4TNV98-ZQTBZ engine: 4 cylinders, displacement 3317 cc, power 45.30 KW
- Working hours according to counter 10766
- CE Standards
- **IMPORTANT:** The buyer is responsible for everything related to the loading of this equipment

Item number: 782212, **Manufacturer:** TAKEUCHI, **Model / Type:** TB 180 FR, **Year of manufacture:** 2010, **Item available from:** Immediately, **Item condition:** unchecked, **Delivery terms:** EXW Hormilla (La Rioja), ex foundation, unpackaged, **Payment terms:** 100% payment prior to collection, **dimensions (l x w x h) approx.:** 6,400 x 2,300 x 2,720 mm, **weight approx.:** 8,345 kg



■ RENAULT M220.14C Maintenance Truck 4x2

Identification: VF644ACA000001009

Plate: 6175-BSV

- **IMPORTANT:**
- The buyer is responsible for everything related to the loading of this equipment
- Surplex will deliver this vehicle to the buyer with a Sale Notification in DGT (Spanish traffic authorities). This Sale Notification will be invoiced separately for the amount of €100

Item number: 768391, **Manufacturer:** RENAULT, **Model / Type:** M220.14C, **Item available from:** Immediately, **Item condition:** unchecked, **Delivery terms:** EXW Hormilla (La Rioja), ex foundation, unpackaged, **Payment terms:** 100% payment prior to collection, **dimensions (l x w x h) approx.:** 6,000 x 2,400 x 3,000 mm, **weight approx.:** 13,000 kg

No. 33



POWER TOWERS POWER TOWERS Electric Vertical Mast

Serial Number: 18751813A
Weight: 342kg
Payload: 250kg
No. Personas + allowance: 1 pax(80kg) +170kg
Working Height: 5100mm
Max. Manual Force: 200N
Indoor use only
CE Standard

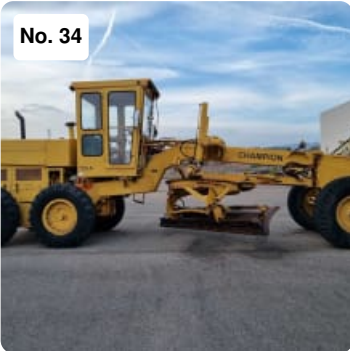
IMPORTANT:

The customer is responsible for all the loading related to the equipment.

Dimensions and weights are approximate.

Item number: 789418, **Manufacturer:** POWER TOWERS, **Model / Type:** POWER TOWERS, **Year of manufacture:** 2013, **Item available from:** Immediately, **Item condition:** unchecked, **Delivery terms:** EXW Hormilla (La Rioja), ex foundation, unpackaged, **Payment terms:** 100% payment prior to collection, **dimensions (l x w x h) approx.:** 1,520 x 780 x 1,920 mm, **weight approx.:** 310 kg

No. 34



CHAMPION 720 A Motor Grader

- Serial number 720A-11-09-11771
- Blade width 3650 mm
- CUMMINS C8.3 engine: 6 cylinders, displacement 8300 cc, power 117 KW
- Working hours according to counter 8589
- IMPORTANT: The buyer is responsible for everything related to the loading of this equipment

Item number: 782217, **Manufacturer:** CHAMPION, **Model / Type:** 720 A, **Item available from:** Immediately, **Item condition:** unchecked, **Delivery terms:** EXW Hormilla (La Rioja), ex foundation, unpackaged, **Payment terms:** 100% payment prior to collection, **dimensions (l x w x h) approx.:** 8,510 x 2,370 x 3,280 mm, **weight approx.:** 14,800 kg

No. 35

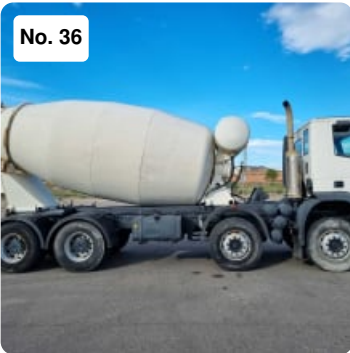


■ HIMOINSA HFW 100 T 5 Diesel Electric Generator

- Diesel generator, power generator, electric generator
- Serial number 7111080
- Voltage: 400 V / 230 V / 50 Hz
- Power 98.75 KVA - 79 KW
- DBT HA 200 MD/4 alternator
- IVECO NEF45TM2A turbo-diesel engine: 4 cylinders, displacement 4500 cc, power 88.60 KW
- Soundproof
- Operating hours according to the counter 8111

Item number: 817674, **Manufacturer:** HIMOINSA, **Model / Type:** HFW 100 T 5, **Year of manufacture:** 2007, **Item available from:** Immediately, **Item condition:** unchecked, **Delivery terms:** FCA Hormilla (La Rioja), loaded on truck, **Payment terms:** 100% payment prior to collection, **dimensions (l x w x h) approx.:** 3,000 x 1,200 x 1,500 mm, **weight approx.:** 1,670 kg

No. 36



■ IVECO EUROTRAKKER CURSOR Concrete Mixer Truck

- Concrete mixer truck
- Spanish registration number: 3027 DBK
- Frame number WJM3JRS00C132712
- IVECO CURSOR D-F3BE0681G*B engine: 6 cylinders, displacement 12882 cc, power 280 KW
- Maximum total weight 32000 kg, death weight 13972 kg
- Mileage 399905 km according to the counter
- BARYVAL ANN-10/01 concrete mixer: serial number 14665, capacity approx. 10 m³
- This vehicle is delivered with only one set of keys
- Ownership change costs will be paid by the buyer
- MOT certificate costs will be paid by the buyer
- The buyer is responsible for passing MOT in order to circulate in Spain
- IMPORTANT:
 - The buyer is responsible for everything related to the loading of this equipment
 - Surplex will deliver this vehicle to the buyer with a Sale Notification in DGT (Spanish traffic authorities). This Sale Notification will be invoiced separately for the amount of €100

Item number: 782211, **Manufacturer:** IVECO, **Model / Type:** EUROTRAKKER CURSOR, **Year of manufacture:** 2004, **Item available from:** Immediately, **Item condition:** unchecked, **Delivery terms:** EXW Hormilla (La Rioja), ex foundation, unpackaged, **Payment terms:** 100% payment prior to collection, **dimensions (l x w x h) approx.:** 9,600 x 2,500 x 3,960 mm, **weight approx.:** 14,000 kg



■ POWER TOWERS NANO SP Electric Vertical Mast

Serial Number: 7650612D
Weight: 478kg
Payload: 200kg
No. Personas + allowance: 1 pax(80kg) +120kg
Working Height: 4500mm
Max. Manual Force: 200N
Max. Wind speed: 12,5 m/s
Inclination: 1,8 degrees
CE Standard

IMPORTANT:

The customer is responsible for all the loading related to the equipment.
Dimensions and weights are approximate.

Item number: 789422, **Manufacturer:** POWER TOWERS, **Model / Type:** NANO SP, **Year of manufacture:** 2012, **Item available from:** Immediately, **Item condition:** unchecked, **Delivery terms:** EXW Hormilla (La Rioja), ex foundation, unpackaged, **Payment terms:** 100% payment prior to collection, **dimensions (l x w x h) approx.:** 1,200 x 750 x 1,590 mm, **weight approx.:** 478 kg



■ POWER TOWERS POWER TOWER Electric Vertical Mast

Serial Number: 8011809A
Weight: 342kg
Payload: 250kg
No. Personas + allowance: 1 pax(80kg) +170kg
Working Height: 5100mm
Max. Manual Force: 200N
Indoor use only
CE Standard

IMPORTANT:

The customer is responsible for all the loading related to the equipment.
Dimensions and weights are approximate.

Item number: 789408, **Manufacturer:** POWER TOWERS, **Model / Type:** POWER TOWER, **Year of manufacture:** 2009, **Item available from:** Immediately, **Item condition:** unchecked, **Delivery terms:** EXW Hormilla (La Rioja), ex foundation, unpackaged, **Payment terms:** 100% payment prior to collection, **dimensions (l x w x h) approx.:** 1,520 x 780 x 1,920 mm, **weight approx.:** 310 kg



No. 39

■ **POWER TOWERS PECO-LIFT Manual vertical Mast**

Serial Number: 4420613G

Weight: 150g

Payload: 150kg

No. Personas + allowance: 1 pax

Working Height: 3500mm

Max. Manual Force: 200N

Indoor use only

CE Standard

IMPORTANT:

The customer is responsible for all the loading related to the equipment.

Dimensions and weights are approximate.

Item number: 789409, **Manufacturer:** POWER TOWERS, **Model / Type:** PECO-LIFT, **Year of manufacture:** 2013, **Item available from:** Immediately, **Item condition:** unchecked, **Delivery terms:** EXW Hormilla (La Rioja), ex foundation, unpackaged, **Payment terms:** 100% payment prior to collection, **dimensions (l x w x h) approx.:** 985 x 700 x 1,550 mm, **weight approx.:** 180 kg



No. 40

■ **TAKEUCHI TB 175 Crawler Mini Excavator**

- Crawler Mini excavator
- Serial number 17510663
- Rubber track
- Track width 450 mm
- Dozer blade
- Maximum Speed 5.50 km/h
- Maximum horizontal reach 7239 mm
- Digging depth 4623 mm
- YANMAR 4TNE98TBZ diesel engine: 4 cylinders, displacement 3300 cc, power 43.50 KW
- Working hours according to counter 10283
- Bucket is NOT included
- IMPORTANT: The buyer is responsible for everything related to the loading of this equipment

Item number: 790005, **Manufacturer:** TAKEUCHI, **Model / Type:** TB 175, **Year of manufacture:** 2001, **Item available from:** Immediately, **Item condition:** unchecked, **Delivery terms:** EXW Hormilla (La Rioja), ex foundation, unpackaged, **Payment terms:** 100% payment prior to collection, **dimensions (l x w x h) approx.:** 7,400 x 2,100 x 2,500 mm, **weight approx.:** 7,500 kg

No. 41



■ HAULOTTE HA 12 IP Electric Articulated Boom Lift

- Electric articulated boom lift
- Serial number AE104903
- Lifting capacity 230 kg
- Maximum platform lifting height approx. 10000 mm
- Maximum horizontal reach approx. 6500 mm
- Platform dimensions approx. 1200 x 800 mm
- Solid tyres
- Battery 48 V, with battery charger
- Working hours according to counter 146
- CE Standards
- IMPORTANT: The buyer is responsible for everything related to the loading of this equipment

Item number: 817646, **Manufacturer:** HAULOTTE, **Model / Type:** HA 12 IP, **Year of manufacture:** 2007, **Item available from:** Immediately, **Item condition:** unchecked, **Delivery terms:** EXW Hormilla (La Rioja), ex foundation, unpackaged, **Payment terms:** 100% payment prior to collection, **dimensions (l x w x h) approx.:** 6,000 x 1,300 x 2,100 mm, **weight approx.:** 5,900 kg

No. 42



■ KOMATSU WA 470-7 Wheel Loader

- Wheel loader
- Serial number KMTWA120C79H52057
- Standard bucket capacity approx. 6 m³
- Maximum unloading height 3010 mm
- Lifting force 232 kN
- Turning radius 7670 mm
- Maximum Speed 39 km/h
- Standard tyres 26.5 R25
- KOMATSU SAA6D125E-6 diesel engine: 6 cylinders, displacement 11040 cc, power 204 KW
- Working hours according to counter 10915
- CE Standards
- IMPORTANT: The buyer is responsible for everything related to the loading of this equipment

Item number: 789432, **Manufacturer:** KOMATSU, **Model / Type:** WA 470-7, **Year of manufacture:** 2014, **Item available from:** Immediately, **Item condition:** unchecked, **Delivery terms:** EXW Hormilla (La Rioja), ex foundation, unpackaged, **Payment terms:** 100% payment prior to collection, **dimensions (l x w x h) approx.:** 8,900 x 3,200 x 3,500 mm, **weight approx.:** 24,000 kg

No. 43



■ HIMOINSA HFW 100 T 5 Diesel Electric Generator

- Diesel generator, power generator, electric generator
- Serial number 7111081
- Voltage: 400 V / 230 V / 50 Hz
- Power 98.75 KVA - 79 KW
- DBT HA 200 MD/4 alternator
- IVECO NEF45TM2A turbo-diesel engine: 4 cylinders, displacement 4500 cc, power 88.60 KW
- Soundproof
- Operating hours according to the counter 1951

Item number: 817659, **Manufacturer:** HIMOINSA, **Model / Type:** HFW 100 T 5, **Year of manufacture:** 2007, **Item available from:** Immediately, **Item condition:** unchecked, **Delivery terms:** FCA Hormilla (La Rioja), loaded on truck, **Payment terms:** 100% payment prior to collection, **dimensions (l x w x h) approx.:** 3,000 x 1,200 x 1,500 mm, **weight approx.:** 1,670 kg

No. 44



■ HIMOINSA HFW 75 T 5 Diesel Electric Generator

- Diesel generator, power generator, electric generator
- Serial number 7105026
- Voltage: 400 V / 230 V / 50 Hz
- Power 72.50 KVA - 58 KW
- DBT HA 200 SD/4 alternator
- IVECO NEF45SM3 turbo-diesel engine: 4 cylinders, displacement 4500 cc, power 79.90 KW
- Soundproof
- Operating hours according to the counter 3501

Item number: 817672, **Manufacturer:** HIMOINSA, **Model / Type:** HFW 75 T 5, **Year of manufacture:** 2007, **Item available from:** Immediately, **Item condition:** unchecked, **Delivery terms:** FCA Hormilla (La Rioja), loaded on truck, **Payment terms:** 100% payment prior to collection, **dimensions (l x w x h) approx.:** 3,000 x 1,200 x 1,500 mm, **weight approx.:** 1,550 kg

No. 45



■ HIMOINSA HFW 60 T 5 Diesel Electric Generator

- Diesel generator, power generator, electric generator
- Serial number 6107226
- Voltage: 400 V / 230 V / 50 Hz
- Power 59.38 KVA - 47.50 KW
- DBT HA 200 SD/4 alternator
- IVECO NEF45SM1F turbo-diesel engine: 4 cylinders, displacement 4500 cc, power 60 KW
- Soundproof
- Operating hours according to the counter 6732

Item number: 817654, **Manufacturer:** HIMOINSA, **Model / Type:** HFW 60 T 5, **Year of manufacture:** 2006, **Item available from:** Immediately, **Item condition:** unchecked, **Delivery terms:** FCA Hormilla (La Rioja), loaded on truck, **Payment terms:** 100% payment prior to collection, **dimensions (l x w x h) approx.:** 3,000 x 1,200 x 1,500 mm, **weight approx.:** 1,450 kg

No. 46



■ POWER TOWERS POWER TOWERS Electric Vertical Mast

Serial Number: 7300509A
Weight: 342kg
Payload: 250kg
No. Personas + allowance: 1 pax(80kg) +170kg
Working Height: 5100mm
Max. Manual Force: 200N
Indoor use only
CE Standard

IMPORTANT:

The customer is responsible for all the loading related to the equipment.

Dimensions and weights are approximate.

Item number: 789419, **Manufacturer:** POWER TOWERS, **Model / Type:** POWER TOWERS, **Year of manufacture:** 2009, **Item available from:** Immediately, **Item condition:** unchecked, **Delivery terms:** EXW Hormilla (La Rioja), ex foundation, unpackaged, **Payment terms:** 100% payment prior to collection, **dimensions (l x w x h) approx.:** 1,520 x 780 x 1,920 mm, **weight approx.:** 310 kg



■ POWER TOWERS PECO-LIFT Manual vertical Mast

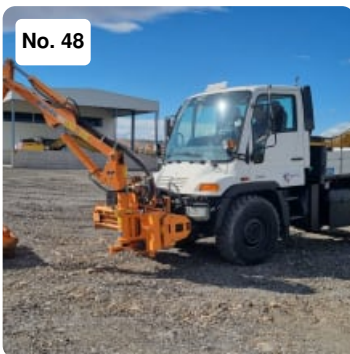
Serial Number: 3970513G
 Weight: 180g
 Payload: 150kg
 No. Pax + allowance: 1 pax
 Working Height: 3500mm
 Max. Manual Force: 200N
 Indoor use only
 CE Standard

IMPORTANT:

The customer is responsible for all the loading related to the equipment.

Dimensions and weights are approximate.

Item number: 789416, **Manufacturer:** POWER TOWERS, **Model / Type:** PECO-LIFT,
Year of manufacture: 2013, **Item available from:** Immediately, **Item condition:**
 unchecked, **Delivery terms:** EXW Hormilla (La Rioja), ex foundation, unpackaged,
Payment terms: 100% payment prior to collection, **dimensions (l x w x h) approx.:** 985 x
 700 x 1,550 mm, **weight approx.:** 180 kg



■ MERCEDES BENZ UNIMOG U 300 Utility Truck with Accesories

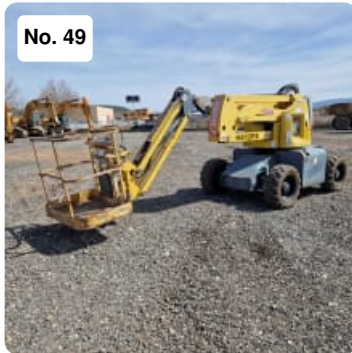
Model: 405120
 Variant: WDB405120
 Registration number: 4788-DZZ
 Chassis: WD4051201V209686
 Fuel: Diesel 135litres
 ADBlue tank: 25litres
 Hopper load capacity: 1000
 Tyres: 365/80 R20 141/144G
 Seats: 2
 Displacement: 4/4249cm³
 Power: 130kw
 Speed: 2200rpm
 Max. Torque: 675
 Overhang: 870mm
 Wheelbase: 3600mm
 Dual-circuit hydraulic system with proportional control
 Proportional control, circuit I/II, with 24/48 l/min flow rate and operating pressure
 200/240 bar
 Working hours: 1686kms
 MOT 11.05.22
 CE Mirror Certificate
 CE Certificate
 Includes:
 Hydraulic front brushcutter FME 600 (2005), Serial Number: 05S02020497, Weight 1120kg
 Max. height 7.2m
 Lateral movement: 1300mm, Rotation: 240°.

Counterweight Support
Road and Tunnel Maintenance System
Ice Maintenance System
Water Tank

IMPORTANT:

The buyer is responsible for everything related to the loading of this equipment
Surplex will deliver this vehicle to the buyer with a Sale Notification in DGT (Spanish traffic authorities). This Sale Notification will be invoiced separately for the amount of €100

Item number: 744954, **Manufacturer:** MERCEDES BENZ, **Model / Type:** UNIMOG U 300, **Year of manufacture:** 2006, **Item available from:** immediately, **Item condition:** unchecked, **Delivery terms:** EXW Hormilla (La Rioja), ex foundation, unpackaged, **Payment terms:** 100% payment prior to collection, **dimensions (l x w x h) approx.:** 5,620 x 2,150 x 2,830 mm, **weight approx.:** 5,000 kg



■ **HAULOTTE HA 12 PX Diesel Articulated Boom Lift**

- Diesel articulated boom lift
- Serial number AD115005
- Lifting capacity 230 kg
- Maximum platform lifting height approx. 10400 mm
- Maximum horizontal reach approx. 6600 mm
- Platform dimensions approx. 1500 x 800 mm
- 4 wheel drive
- LOMBARDINI LDW 1404/B6 diesel engine: 4 cylinders, displacement 1372 cc, power 21 KW
- Working hours according to counter 5467
- CE Standards
- **IMPORTANT:** The buyer is responsible for everything related to the loading of this equipment

Item number: 817664, **Manufacturer:** HAULOTTE, **Model / Type:** HA 12 PX, **Year of manufacture:** 2007, **Item available from:** Immediately, **Item condition:** unchecked, **Delivery terms:** EXW Hormilla (La Rioja), ex foundation, unpackaged, **Payment terms:** 100% payment prior to collection, **dimensions (l x w x h) approx.:** 6,400 x 1,850 x 2,100 mm, **weight approx.:** 5,500 kg



No. 50

■ GENIE GS 3232 Electric Scissor Lift Platform

- Electric scissor lift platform
- Serial number GS3207-87825
- Lifting capacity 227 kg
- Maximum platform lifting height approx. 9780 mm
- Platform dimensions approx. 2260 x 810 mm
- Solid tyres
- 2 wheel drive
- Battery 24 V
- Working hours according to counter 1083
- CE Standards
- **IMPORTANT:** The buyer is responsible for everything related to the loading of this equipment

Item number: 817651, **Manufacturer:** GENIE, **Model / Type:** GS 3232, **Year of manufacture:** 2007, **Item available from:** Immediately, **Item condition:** unchecked, **Delivery terms:** EXW Hormilla (La Rioja), ex foundation, unpackaged, **Payment terms:** 100% payment prior to collection, **dimensions (l x w x h) approx.:** 2,300 x 810 x 2,440 mm, **weight approx.:** 2,450 kg



No. 51

■ HAULOTTE COMPACT 12 Electric Scissor Lift Platform

- Electric scissor lift platform
- Serial number CE129787
- Lifting capacity 300 kg
- Maximum platform lifting height approx. 10000 mm
- Platform dimensions approx. 2300 x 1200 mm
- Solid tyres
- 2 wheel drive
- Battery 24 V
- Working hours according to counter 13
- CE Standards
- **IMPORTANT:** The buyer is responsible for everything related to the loading of this equipment

Item number: 817658, **Manufacturer:** HAULOTTE, **Model / Type:** COMPACT 12, **Year of manufacture:** 2007, **Item available from:** Immediately, **Item condition:** unchecked, **Delivery terms:** EXW Hormilla (La Rioja), ex foundation, unpackaged, **Payment terms:** 100% payment prior to collection, **dimensions (l x w x h) approx.:** 2,500 x 1,200 x 2,500 mm, **weight approx.:** 2,630 kg



■ POWER TOWERS POWER TOWERS Electric Vertical Mast

Serial Number: 1462510A
Weight: 342kg
Payload: 250kg
No. Pax + allowance: 1 pax(80kg) +170kg
Working Height: 5100mm
Max. Manual Force: 200N
Indoor use only
CE Standard

IMPORTANT:

The customer is responsible for all the loading related to the equipment.
Dimensions and weights are approximate.

Item number: 789423, **Manufacturer:** POWER TOWERS, **Model / Type:** POWER TOWERS, **Year of manufacture:** 2010, **Item available from:** Immediately, **Item condition:** unchecked, **Delivery terms:** EXW Hormilla (La Rioja), ex foundation, unpackaged, **Payment terms:** 100% payment prior to collection, **dimensions (l x w x h) approx.:** 1,520 x 780 x 1,920 mm, **weight approx.:** 310 kg



■ POWER TOWERS PECO-LIFT Manual vertical Mast

Serial Number: 3840513G
Weight: 150g
Payload: 150kg
No. Pax + allowance: 1 pax
Working Height: 3500mm
Max. Manual Force: 200N
Indoor use only
CE Standard

IMPORTANT:

The customer is responsible for all the loading related to the equipment.
Dimensions and weights are approximate.

Item number: 789410, **Manufacturer:** POWER TOWERS, **Model / Type:** PECO-LIFT, **Year of manufacture:** 2013, **Item available from:** Immediately, **Item condition:** unchecked, **Delivery terms:** EXW Hormilla (La Rioja), ex foundation, unpackaged, **Payment terms:** 100% payment prior to collection, **dimensions (l x w x h) approx.:** 985 x 700 x 1,550 mm, **weight approx.:** 180 kg

No. 54



■ VOLVO A 40 E Articulated Dumptruck

Identification Number: VCE0A40ET00011546

Working Hours: 18.119

6x6

Tail Gate

AutoLube

Reverse Camera

A/C

IMPORTANT:

The customer is responsible for all the loading related to the equipment.

Dimensions and weights are approximate.

Item number: 767073, **Manufacturer:** VOLVO, **Model / Type:** A 40 E, **Year of manufacture:** 2008, **Item available from:** Immediately, **Item condition:** unchecked, **Delivery terms:** EXW Hormilla (La Rioja), ex foundation, unpackaged, **Payment terms:** 100% payment prior to collection, **dimensions (l x w x h) approx.:** 11,300 x 3,750 x 3,430 mm, **weight approx.:** 30,200 kg

No. 55



■ HAULOTTE COMPACT 10 Electric Scissor Lift Platform

- Electric scissor lift platform
- Serial number CE129629
- Lifting capacity 450 kg
- Maximum platform lifting height approx. 8140 mm
- Platform dimensions approx. 2300 x 1200 mm
- Solid tyres
- 2 wheel drive
- Battery 24 V
- Working hours according to counter 575
- CE Standards
- IMPORTANT: The buyer is responsible for everything related to the loading of this equipment

Item number: 817666, **Manufacturer:** HAULOTTE, **Model / Type:** COMPACT 10, **Year of manufacture:** 2007, **Item available from:** Immediately, **Item condition:** unchecked, **Delivery terms:** EXW Hormilla (La Rioja), ex foundation, unpackaged, **Payment terms:** 100% payment prior to collection, **dimensions (l x w x h) approx.:** 2,500 x 1,300 x 2,350 mm, **weight approx.:** 2,330 kg

No. 56



■ HIMOINSA HFW 100 T 5 Diesel Electric Generator

- Diesel generator, power generator, electric generator
- Serial number 7111083
- Voltage: 400 V / 230 V / 50 Hz
- Power 98.75 KVA - 79 KW
- DBT HA 200 MD/4 alternator
- IVECO NEF45TM2A turbo-diesel engine: 4 cylinders, displacement 4500 cc, power 88.60 KW
- Soundproof
- Operating hours according to the counter 7700

Item number: 817673, **Manufacturer:** HIMOINSA, **Model / Type:** HFW 100 T 5, **Year of manufacture:** 2007, **Item available from:** Immediately, **Item condition:** unchecked, **Delivery terms:** FCA Hormilla (La Rioja), loaded on truck, **Payment terms:** 100% payment prior to collection, **dimensions (l x w x h) approx.:** 3,000 x 1,200 x 1,500 mm, **weight approx.:** 1,550 kg

No. 57



■ POWER TOWERS POWER TOWERS Electric Vertical Mast

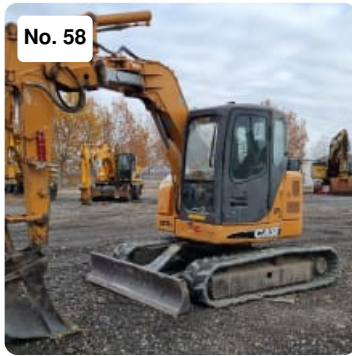
Serial Number: 17414711A
Weight: 342kg
Payload: 250kg
No. Pax + allowance: 1 pax(80kg) +170kg
Working Height: 5100mm
Max. Manual Force: 200N
Indoor use only
CE Standard

IMPORTANT:

The customer is responsible for all the loading related to the equipment.

Dimensions and weights are approximate.

Item number: 789406, **Manufacturer:** POWER TOWERS, **Model / Type:** POWER TOWERS, **Year of manufacture:** 2011, **Item available from:** Immediately, **Item condition:** unchecked, **Delivery terms:** EXW Hormilla (La Rioja), ex foundation, unpackaged, **Payment terms:** 100% payment prior to collection, **dimensions (l x w x h) approx.:** 1,520 x 780 x 1,920 mm, **weight approx.:** 310 kg



■ CASE CX 75 SR Crawler Mini Excavator

- Crawler mini excavator
- Serial number DC07U0768
- Rubber track
- Track width 450 mm
- Standard bucket capacity approx. 0.30 m³
- Dozer blade approx. 2250 mm long
- Maximum horizontal reach 7200 mm
- Digging depth 4200 mm
- Tear-out force 39 kN
- ISUZU CC-4JG1 diesel engine: 4 cylinders, displacement 3059 cc, power 39.10 KW
- Working hours according to counter 57981669
- CE Standards
- 2 another buckets are included
- IMPORTANT: The buyer is responsible for everything related to the loading of this equipment

Item number: 789435, **Manufacturer:** CASE, **Model / Type:** CX 75 SR, **Year of manufacture:** 2007, **Item available from:** Immediately, **Item condition:** unchecked, **Delivery terms:** EXW Hormilla (La Rioja), ex foundation, unpackaged, **Payment terms:** 100% payment prior to collection, **dimensions (l x w x h) approx.:** 6,000 x 2,320 x 2,700 mm, **weight approx.:** 8,500 kg



■ HAULOTTE COMPACT 10 Electric Scissor Lift Platform

- Electric scissor lift platform
- Serial number CE129634
- Lifting capacity 450 kg
- Maximum platform lifting height approx. 8140 mm
- Platform dimensions approx. 2300 x 1200 mm
- Solid tyres
- 2 wheel drive
- Battery 24 V
- Working hours according to counter 744
- CE Standards
- IMPORTANT: The buyer is responsible for everything related to the loading of this equipment

Item number: 817669, **Manufacturer:** HAULOTTE, **Model / Type:** COMPACT 10, **Year of manufacture:** 2007, **Item available from:** Immediately, **Item condition:** unchecked, **Delivery terms:** EXW Hormilla (La Rioja), ex foundation, unpackaged, **Payment terms:** 100% payment prior to collection, **dimensions (l x w x h) approx.:** 2,300 x 1,200 x 2,260 mm, **weight approx.:** 2,330 kg

No. 60



■ JCB 535-95 AGRI SUPER Telehandler

- Telehandler
- Serial number JCB5XB3JLJ2730446
- Spanish registration number: E 6600 BGY
- Maximum load capacity 3500 kg
- Maximum lifting height 9500 mm
- Working hours according to the counter 6131
- JCB EcoMax engine: displacement 4399 cc, power 93 KW
- CE Standards
- IMPORTANT:
 - The buyer is responsible for everything related to the loading of this equipment
 - Surplex will deliver this vehicle to the buyer with a Sale Notification in DGT (Spanish traffic authorities). This Sale Notification will be invoiced separately for the amount of €100

Item number: 789757, **Manufacturer:** JCB, **Model / Type:** 535-95 AGRI SUPER, **Year of manufacture:** 2018, **Item available from:** Immediately, **Item condition:** unchecked, **Delivery terms:** EXW Hormilla (La Rioja), ex foundation, unpackaged, **Payment terms:** 100% payment prior to collection, **dimensions (l x w x h) approx.:** 5,000 x 2,300 x 2,490 mm, **weight approx.:** 8,400 kg

No. 61



■ POWER TOWERS NANO SP Electric Vertical Mast

Serial Number: 12373713D
Weight: 478kg
Payload: 200kg
No. Personas + allowance: 1 pax(80kg) +120kg
Working Height: 4500mm
Max. Manual Force: 200N
Max. Wind speed: 12,5 m/s
Inclination: 1,8 degrees
CE Standard

IMPORTANT:

The customer is responsible for all the loading related to the equipment.
Dimensions and weights are approximate.

Item number: 789420, **Manufacturer:** POWER TOWERS, **Model / Type:** NANO SP, **Year of manufacture:** 2013, **Item available from:** Immediately, **Item condition:** unchecked, **Delivery terms:** EXW Hormilla (La Rioja), ex foundation, unpackaged, **Payment terms:** 100% payment prior to collection, **dimensions (l x w x h) approx.:** 1,200 x 750 x 1,590 mm, **weight approx.:** 478 kg

No. 62



■ POWER TOWERS POWER TOWERS Electric Vertical Mast

Serial Number: 16944211A
Weight: 342kg
Payload: 250kg
No. Personas + allowance: 1 pax(80kg) +170kg
Working Height: 5100mm
Max. Manual Force: 200N
Indoor use only
CE Standard
IMPORTANT:
The customer is responsible for all the loading related to the equipment.
Dimensions and weights are approximate.

Item number: 789407, **Manufacturer:** POWER TOWERS, **Model / Type:** POWER TOWERS, **Year of manufacture:** 2011, **Item available from:** Immediately, **Item condition:** unchecked, **Delivery terms:** EXW Hormilla (La Rioja), ex foundation, unpackaged, **Payment terms:** 100% payment prior to collection, **dimensions (l x w x h) approx.:** 1,520 x 780 x 1,920 mm, **weight approx.:** 310 kg

No. 63



■ POWER TOWERS POWER TOWERS Electric Vertical Mast

Serial Number: 16723811A
Weight: 342kg
Payload: 250kg
No. Pax + allowance: 1 pax(80kg) +170kg
Working Height: 5100mm
Max. Manual Force: 200N
Indoor use only
CE Standard
IMPORTANT:
The customer is responsible for all the loading related to the equipment.
Dimensions and weights are approximate.

Item number: 789411, **Manufacturer:** POWER TOWERS, **Model / Type:** POWER TOWERS, **Year of manufacture:** 2011, **Item available from:** Immediately, **Item condition:** unchecked, **Delivery terms:** EXW Hormilla (La Rioja), ex foundation, unpackaged, **Payment terms:** 100% payment prior to collection, **dimensions (l x w x h) approx.:** 1,520 x 780 x 1,920 mm, **weight approx.:** 310 kg



■ POWER TOWERS PECO-LIFT Manual vertical Mast

Serial Number: 5310813G

Weight: 180g

Payload: 150kg

No. Pax + allowance: 1 pax

Working Height: 3500mm

Max. Manual Force: 200N

Indoor use only

CE Standard

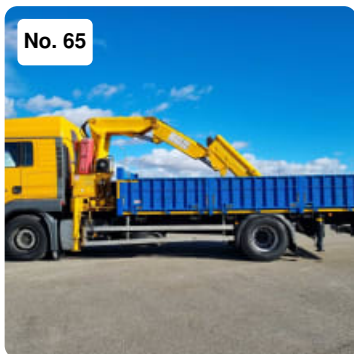
The machine that is delivered is NOT the one shown in the photographs, but an identical one

IMPORTANT:

The customer is responsible for all the loading related to the equipment.

Dimensions and weights are approximate.

Item number: 789417, **Manufacturer:** POWER TOWERS, **Model / Type:** PECO-LIFT, **Item available from:** Immediately, **Item condition:** unchecked, **Delivery terms:** EXW Hormilla (La Rioja), ex foundation, unpackaged, **Payment terms:** 100% payment prior to collection, **dimensions (l x w x h) approx.:** 985 x 700 x 1,550 mm, **weight approx.:** 180 kg



■ MAN TGA 18.480 4X2 BLS Truck with Crane

- Truck with crane
- Spanish registration number: 2763 DHP
- Frame number WMAH05ZZ05M413668
- MAN D2876LF12 turbo-diesel engine: 6 cylinders, displacement 12816 cc, power 353 KW
- Rear twin tyres
- Mileage 1223000 km according to the counter
- Useful box dimensions 5920 x 2480 x 680 mm
- FASSI F8.3 crane: serial number 0522, year of manufacture 1986, lifting capacity 20000 kgm, reach 10200 mm, with remote control
- The buyer is responsible for passing MOT in order to circulate in Spain
- IMPORTANT:
- The buyer is responsible for everything related to the loading of this equipment
- Surplex will deliver this vehicle to the buyer with a Sale Notification in DGT (Spanish traffic authorities). This Sale Notification will be invoiced separately for the amount of €100

Item number: 787779, **Manufacturer:** MAN, **Model / Type:** TGA 18.480 4X2 BLS, **Year of manufacture:** 2005, **Item available from:** Immediately, **Item condition:** unchecked, **Delivery terms:** EXW Hormilla (La Rioja), ex foundation, unpackaged, **Payment terms:** 100% payment prior to collection, **dimensions (l x w x h) approx.:** 9,650 x 2,600 x 3,310 mm, **weight approx.:** 18,000 kg

No. 66



■ JCB JS130LC T4 Crawler Excavator

Identification Number: JCBJS13EL02134214

700mm Pads

VG, CV, QH Piped

Aux. Piping

Reverse Camera, A/C

Working Hours 9.908h

IMPORTANT: The buyer is responsible for everything related to the loading of this equipment

Item number: 767075, **Manufacturer:** JCB, **Model / Type:** JS130LC T4, **Year of manufacture:** 2014, **Item available from:** Immediately, **Item condition:** unchecked, **Delivery terms:** EXW Hormilla (La Rioja), ex foundation, unpackaged, **Payment terms:** 100% payment prior to collection, **dimensions (l x w x h) approx.:** 7,510 x 3,000 x 2,590 mm, **weight approx.:** 13,625 kg

No. 67

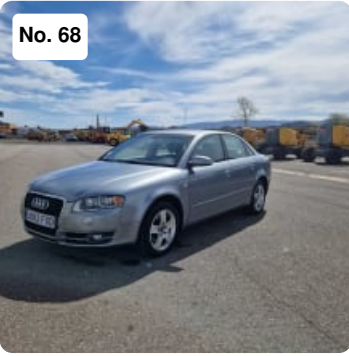


■ HAULOTTE COMPACT 10 Electric Scissor Lift Platform

- Electric scissor lift platform
- Serial number CE129636
- Lifting capacity 450 kg
- Maximum platform lifting height approx. 8140 mm
- Platform dimensions approx. 2300 x 1200 mm
- Solid tyres
- 2 wheel drive
- Battery 24 V
- Working hours according to counter 677
- CE Standards
- IMPORTANT: The buyer is responsible for everything related to the loading of this equipment

Item number: 817670, **Manufacturer:** HAULOTTE, **Model / Type:** COMPACT 10, **Year of manufacture:** 2007, **Item available from:** Immediately, **Item condition:** unchecked, **Delivery terms:** EXW Hormilla (La Rioja), ex foundation, unpackaged, **Payment terms:** 100% payment prior to collection, **dimensions (l x w x h) approx.:** 2,500 x 1,200 x 2,350 mm, **weight approx.:** 2,330 kg

No. 68



■ AUDI A4 2.0 TDI Car

- Car, vehicle
- Spanish registration number: 3062 FXD
- Frame number WAUZZZ8E68A093448
- AUDI BRE turbo-diesel engine: 4 cylinders, displacement 1968 cc, power 103 KW
- Automatic transmission
- Front wheel drive
- Maximum speed 212 km/h, acceleration 0-100 km/h: 9.70 sec
- Average consumption 5.90 l/100 km
- Mileage 249032 km according to the counter
- This vehicle is delivered with only one set of keys
- Ownership change costs will be paid by the buyer
- MOT certificate costs will be paid by the buyer (Spanish MOT certificate valid till May/2023)
- The buyer is responsible for passing MOT in order to circulate in Spain
- IMPORTANT:
- The buyer is responsible for everything related to the loading of this equipment
- Surplex will deliver this vehicle to the buyer with a Sale Notification in DGT (Spanish traffic authorities). This Sale Notification will be invoiced separately for the amount of €100

Item number: 818617, **Manufacturer:** AUDI, **Model / Type:** A4 2.0 TDI, **Year of manufacture:** 2007, **Item available from:** Immediately, **Item condition:** unchecked, **Delivery terms:** EXW Hormilla (La Rioja), ex foundation, unpackaged, **Payment terms:** 100% payment prior to collection, **dimensions (l x w x h) approx.:** 4,586 x 1,772 x 1,397 mm, **weight approx.:** 1,470 kg

No. 69



■ NISSAN KUBISTAR 1.5 DCI Van

- Van
- Spanish registration number: 2693 CWF
- Frame number VNVF107AFUU000830
- RENAULT turbo-diesel engine: 4 cylinders, displacement 1461 cc, power 48 KW
- Manual transmission, gearbox 5 gears
- Front wheel drive
- Maximum total weight 1675 kg, death weight 1055 kg
- With lateral door
- Mileage 172039 km according to the counter
- This vehicle is delivered with 2 set of keys
- Ownership change costs will be paid by the buyer
- MOT certificate costs will be paid by the buyer (Spanish MOT certificate valid till 14/07/2023)
- The buyer is responsible for passing MOT in order to circulate in Spain
- IMPORTANT:
- The buyer is responsible for everything related to the loading of this equipment

• Surplex will deliver this vehicle to the buyer with a Sale Notification in DGT (Spanish traffic authorities). This Sale Notification will be invoiced separately for the amount of €100

Item number: 818616, **Manufacturer:** NISSAN, **Model / Type:** KUBISTAR 1.5 DCI, **Year of manufacture:** 2004, **Item available from:** Immediately, **Item condition:** unchecked, **Delivery terms:** EXW Hormilla (La Rioja), ex foundation, unpackaged, **Payment terms:** 100% payment prior to collection, **dimensions (l x w x h) approx.:** 4,035 x 1,672 x 1,800 mm, **weight approx.:** 1,055 kg



■ NISSAN PRIMASTAR DCI 100 Van

- Van
- Spanish registration number: 9268 DWB
- Frame number VSKF4ACA6UY583452
- RENAULT F9Q U7: 4 cylinders, displacement 1870 cc, power 74 KW
- Manual transmission, gearbox 6 gears
- Front wheel drive
- Maximum total weight 2700 kg, death weight 1750 kg
- With lateral door
- Drivers cabin with 3 seats
- Mileage 212438 km according to the counter
- This vehicle is delivered with 2 set of keys
- Ownership change costs will be paid by the buyer
- MOT certificate costs will be paid by the buyer (Spanish MOT certificate valid till 01/09/2023)
- The buyer is responsible for passing MOT in order to circulate in Spain
- IMPORTANT:
 - The buyer is responsible for everything related to the loading of this equipment
 - Surplex will deliver this vehicle to the buyer with a Sale Notification in DGT (Spanish traffic authorities). This Sale Notification will be invoiced separately for the amount of €100

Item number: 818613, **Manufacturer:** NISSAN, **Model / Type:** PRIMASTAR DCI 100, **Year of manufacture:** 2006, **Item available from:** Immediately, **Item condition:** unchecked, **Delivery terms:** EXW Hormilla (La Rioja), ex foundation, unpackaged, **Payment terms:** 100% payment prior to collection, **dimensions (l x w x h) approx.:** 4,782 x 1,904 x 1,959 mm, **weight approx.:** 1,750 kg

No. 71



■ VOLVO FL 61960 INTERCOOLER Machine Carrier Truck

- Machine carrier truck
- Spanish registration number: 2905 BFR
- Frame number YV2E4C5A7YB250936
- VOLVO D/D6A230 turbo-diesel engine: 6 cylinders, displacement 5479 cc, power 169 KW
- Mileage 903340 km according to the counter
- Machine carrier platform: length approx. 8000 mm, hydraulically operated ramp, BEZARES winch
- This vehicle is delivered with 2 set of keys
- Ownership change costs will be paid by the buyer
- MOT certificate costs will be paid by the buyer
- The buyer is responsible for passing MOT in order to circulate in Spain
- IMPORTANT:
 - The buyer is responsible for everything related to the loading of this equipment
 - Surplex will deliver this vehicle to the buyer with a Sale Notification in DGT (Spanish traffic authorities). This Sale Notification will be invoiced separately for the amount of €100

Item number: 818614, **Manufacturer:** VOLVO, **Model / Type:** FL 61960 INTERCOOLER, **Year of manufacture:** 2001, **Item available from:** Immediately, **Item condition:** unchecked, **Delivery terms:** EXW Hormilla (La Rioja), ex foundation, unpackaged, **Payment terms:** 100% payment prior to collection, **dimensions (l x w x h) approx.:** 10,300 x 2,550 x 3,300 mm, **weight approx.:** 9,000 kg

No. 72



■ RENAULT Concrete Mixer Truck

The item has NO original documentation or copy (it has not been registered in Spain).

Concrete mixer truck

Chassis number VF634FPA000001637

Maximum total weight 32000 kg

This vehicle is delivered with only one set of keys.

The buyer is responsible for:

ITV costs

Matriculation

Industry

Change of title (if applicable)

IMPORTANT:

The buyer is responsible for everything related to the loading of this equipment.

Item number: 782222, **Manufacturer:** RENAULT, **Year of manufacture:** 2011, **Item available from:** Immediately, **Item condition:** unchecked, **Delivery terms:** EXW Hormilla (La Rioja), ex foundation, unpackaged, **Payment terms:** 100% payment prior to collection, **dimensions (l x w x h) approx.:** 8,460 x 2,450 x 4,150 mm, **weight approx.:** 14,000 kg

No. 73

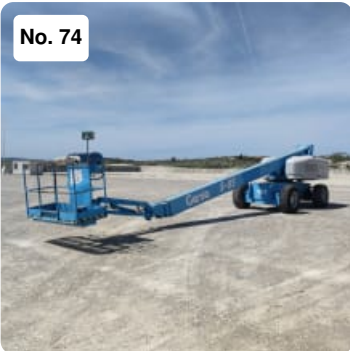


■ LAND ROVER FREELANDER 2 TD4 S All Terrain Vehicle

- All terrain vehicle
- Spanish registration number 0040 HSP
- Frame number e11*2001/116*0300*12
- Turbo-diesel engine FORD 224DT , 4 cylinders, displacement 2179 cc, power 110 KW
- Manual transmission, gearbox 6 gears
- 4 wheel drive
- Maximum speed 181 km/h, acceleration 0-100 km/h: 11.20 sec
- Average consumption 7.00 l/100 km
- BULLFACE electric winch
- Mileage 197409 km according to the counter
- This vehicle is delivered with 2 set of keys
- Ownership change costs will be paid by the buyer
- Spanish MOT certificate valid till 22/08/2023
- IMPORTANT:
 - The buyer is responsible for everything related to the loading of this equipment
 - Surplex will deliver this vehicle to the buyer with a Sale Notification in DGT (Spanish traffic authorities). This Sale Notification will be invoiced separately for the amount of €100

Item number: 782220, **Manufacturer:** LAND ROVER, **Model / Type:** FREELANDER 2 TD4 S, **Year of manufacture:** 2013, **Item available from:** Immediately, **Item condition:** unchecked, **Delivery terms:** EXW Hormilla (La Rioja), ex foundation, unpackaged, **Payment terms:** 100% payment prior to collection, **dimensions (l x w x h) approx.:** 4,560 x 2,230 x 1,780 mm, **weight approx.:** 1,958 kg

No. 74



■ GENIE S 85 4WD Diesel Telescopic Boom Lift

Serial Number^o:1730
Working height : 2790mm
Horizontal reach: 2330
Lift capacity: 227kgs
Platform rotation 160^o
Turntable Rotation: 360^o
Working Hours: 3248

IMPORTANT:

The customer is responsible for all the loading related to the equipment.
Dimensions and weights are approximate.

Item number: 746135, **Manufacturer:** GENIE, **Model / Type:** S 85 4WD, **Year of manufacture:** 2000, **Item available from:** Immediately, **Item condition:** unchecked, **Delivery terms:** EXW Hormilla (La Rioja), ex foundation, unpackaged, **Payment terms:** 100% payment prior to collection, **dimensions (l x w x h) approx.:** 10,670 x 3,070 x 2,800 mm, **weight approx.:** 16,700 kg

No. 75

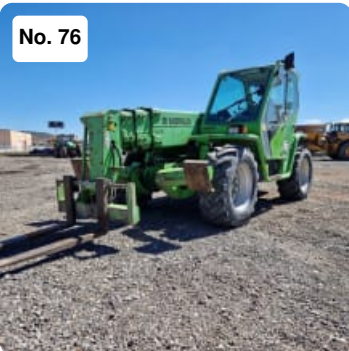


■ NISSAN CABSTAR E 120 Truck

- Truck
- Spanish registration number: 6308 BXC
- Frame number VWASBFTL022157793
- NISSAN D-BD30 engine: 4 cylinders, displacement 2953 cc, power 88 KW
- Max. Total weight 3500 kg, death weight 2090 kg
- Mileage 176390 km according to the counter
- This vehicle is delivered with only one set of keys
- Ownership change costs will be paid by the buyer
- MOT certificate costs will be paid by the buyer (Spanish MOT certificate valid till 15/05/2023)
- The buyer is responsible for passing MOT in order to circulate in Spain
- IMPORTANT:
- The buyer is responsible for everything related to the loading of this equipment
- Surplex will deliver this vehicle to the buyer with a Sale Notification in DGT (Spanish traffic authorities). This Sale Notification will be invoiced separately for the amount of €100

Item number: 818644, **Manufacturer:** NISSAN, **Model / Type:** CABSTAR E 120, **Year of manufacture:** 2002, **Item available from:** Immediately, **Item condition:** unchecked, **Delivery terms:** EXW Hormilla (La Rioja), ex foundation, unpackaged, **Payment terms:** 100% payment prior to collection, **dimensions (l x w x h) approx.:** 7,000 x 2,380 x 1,950 mm, **weight approx.:** 2,090 kg

No. 76



■ MERLO P 40.17 K Telehandler

- Telehandler
- Serial number B6172363
- Maximum load capacity 4000 kg
- Maximum lifting height 16700 mm
- Maximum side reach 12500 mm
- DEUTZ BF 4M 2021: 4 cylinders displacement 4040 cc, power 74.90 KW
- Working hours according to the counter 10150
- CE Standards
- IMPORTANT:
- The buyer is responsible for everything related to the loading of this equipment

Item number: 818977, **Manufacturer:** MERLO, **Model / Type:** P 40.17 K, **Year of manufacture:** 2006, **Item available from:** Immediately, **Item condition:** unchecked, **Delivery terms:** EXW Hormilla (La Rioja), ex foundation, unpackaged, **Payment terms:** 100% payment prior to collection, **dimensions (l x w x h) approx.:** 8,000 x 2,500 x 2,600 mm, **weight approx.:** 10,500 kg

No. 77



■ JLG 3246 ES Electric Scissor Lift Platform

- Electric scissor lift platform
- Serial number 0200119193
- Lifting capacity 320 kg
- Maximum platform lifting height approx. 9680 mm
- Platform dimensions approx. 2500 x 1120 mm
- Extended platform dimensions approx. 3770 x 1120 mm
- Solid tyres
- 2 wheel drive
- Battery 24 V
- Working hours according to counter 1215
- CE Standards
- IMPORTANT:
- The buyer is responsible for everything related to the loading of this equipment

Item number: 818978, **Manufacturer:** JLG, **Model / Type:** 3246 ES, **Year of manufacture:** 2004, **Item available from:** Immediately, **Item condition:** unchecked, **Delivery terms:** EXW Hormilla (La Rioja), ex foundation, unpackaged, **Payment terms:** 100% payment prior to collection, **dimensions (l x w x h) approx.:** 2,500 x 1,200 x 2,400 mm, **weight approx.:** 2,900 kg

No. 78



■ BOBCAT E 45 Mini Excavator

- Serial number B3NR11063
- Rubber track
- Track width 400 mm
- Bucket useful dimensions approx. 750 x 550 x 450 mm
- Boom swing to the left 75°
- Boom swing to the right 50°
- Dozer blade 1960 mm long
- Maximum Speed 4.20 km/h
- Maximum horizontal reach 5670 mm
- Digging depth 3300 mm
- Tear-out force 34 kN
- KUBOTA V2403 engine: 4 cylinders, displacement 2433 cc, power 30.20 KW
- Working hours according to counter 5769
- CE Standards
- IMPORTANT: The buyer is responsible for everything related to the loading of this equipment

Item number: 782225, **Manufacturer:** BOBCAT, **Model / Type:** E 45, **Year of manufacture:** 2017, **Item available from:** Immediately, **Item condition:** unchecked, **Delivery terms:** EXW Hormilla (La Rioja), ex foundation, unpackaged, **Payment terms:** 100% payment prior to collection, **dimensions (l x w x h) approx.:** 5,350 x 1,950 x 2,560 mm, **weight approx.:** 4,600 kg

No. 79



■ HIMOINSA HFW 100 T 5 Diesel Electric Generator

- Diesel generator, power generator, electric generator
- Serial number 7111084
- Voltage: 400 V / 230 V / 50 Hz
- Power 98.75 KVA - 79 KW
- DBT HA 200 MD/4 alternator
- IVECO NEF45TM2A turbo-diesel engine: 4 cylinders, displacement 4500 cc, power 88.60 KW
- Soundproof
- Operating hours according to the counter 4917

Item number: 817668, **Manufacturer:** HIMOINSA, **Model / Type:** HFW 100 T 5, **Year of manufacture:** 2007, **Item available from:** Immediately, **Item condition:** unchecked, **Delivery terms:** FCA Hormilla (La Rioja), loaded on truck, **Payment terms:** 100% payment prior to collection, **dimensions (l x w x h) approx.:** 3,000 x 1,200 x 1,500 mm, **weight approx.:** 1,670 kg

No. 80



■ HIMOINSA HFW 75 T 5 Diesel Electric Generator

- Diesel generator, power generator, electric generator
- Serial number 7105027
- Voltage: 400 V / 230 V / 50 Hz
- Power 72.50 KVA - 58 KW
- DBT HA 200 SD/4 alternator
- IVECO NEF45SM3 turbo-diesel engine: 4 cylinders, displacement 4500 cc, power 79.90 KW
- Soundproof

Item number: 817663, **Manufacturer:** HIMOINSA, **Model / Type:** HFW 75 T 5, **Year of manufacture:** 2007, **Item available from:** Immediately, **Item condition:** unchecked, **Delivery terms:** FCA Hormilla (La Rioja), loaded on truck, **Payment terms:** 100% payment prior to collection, **dimensions (l x w x h) approx.:** 3,000 x 1,200 x 1,500 mm, **weight approx.:** 1,550 kg

No. 81



■ POWER TOWERS NANO SP Electric Vertical Mast

Serial Number:11374312D
Weight: 478kg
Payload: 200kg
No. Pax + allowance: 1 pax(80kg) +120kg
Working Height: 4500mm
Max. Manual Force: 200N
Max. Wind speed: 12,5 m/s
Inclination: 1,8 degrees
CE Standard

IMPORTANT:

The customer is responsible for all the loading related to the equipment.
Dimensions and weights are approximate.

Item number: 789429, **Manufacturer:** POWER TOWERS, **Model / Type:** NANO SP, **Year of manufacture:** 2012, **Item available from:** Immediately, **Item condition:** unchecked, **Delivery terms:** EXW Hormilla (La Rioja), ex foundation, unpackaged, **Payment terms:** 100% payment prior to collection, **dimensions (l x w x h) approx.:** 1,200 x 750 x 1,590 mm, **weight approx.:** 478 kg



■ POWER TOWERS POWER TOWERS Electric Vertical Mast

Serial Number: 17670612A
Weight: 342kg
Payload: 250kg
No. Personas + allowance: 1 pax(80kg) +170kg
Working Height: 5100mm
Max. Manual Force: 200N
Indoor use only
CE Standard

IMPORTANT:

The customer is responsible for all the loading related to the equipment.
Dimensions and weights are approximate.

Item number: 789413, **Manufacturer:** POWER TOWERS, **Model / Type:** POWER TOWERS, **Year of manufacture:** 2012, **Item available from:** Immediately, **Item condition:** unchecked, **Delivery terms:** EXW Hormilla (La Rioja), ex foundation, unpackaged, **Payment terms:** 100% payment prior to collection, **dimensions (l x w x h) approx.:** 1,520 x 780 x 1,920 mm, **weight approx.:** 310 kg



■ POWER TOWERS PECO-LIFT Manual vertical Mast

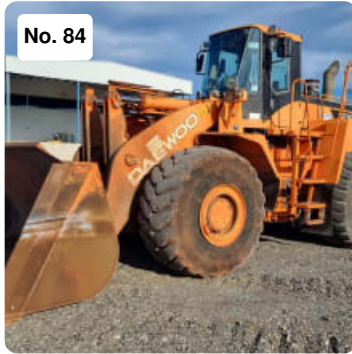
Serial Number: 7741213G
Weight: 180g
Payload: 150kg
No. Pax + allowance: 1 pax
Working Height: 3500mm
Max. Manual Force: 200N
Indoor use only
CE Standard

IMPORTANT:

The customer is responsible for all the loading related to the equipment.

Dimensions and weights are approximate.

Item number: 789428, **Manufacturer:** POWER TOWERS, **Model / Type:** PECO-LIFT, **Year of manufacture:** 2013, **Item available from:** Immediately, **Item condition:** unchecked, **Delivery terms:** EXW Hormilla (La Rioja), ex foundation, unpackaged, **Payment terms:** 100% payment prior to collection, **dimensions (l x w x h) approx.:** 985 x 700 x 1,550 mm, **weight approx.:** 180 kg



■ DOOSAN MEGA 500 V Wheel Loader

- Serial number 2046
- Standard tires 29.5 R25
- Bucket width 3480 mm
- Standards bucket capacity 4.80 m³
- Steering type AL
- Maximum Speed 35 km/h
- Maximum pouring height 3100 mm
- Lifting power 264 kN
- CUMMINS QSM11 engine: displacement 10800 cc, power 250 KW
- Working hours according to meter 16500
- CE Standards

IMPORTANT:

The customer is responsible for all the loading related to the equipment.
Dimensions and weights are approximate.

Item number: 755205, **Manufacturer:** DOOSAN, **Model / Type:** MEGA 500 V, **Year of manufacture:** 2006, **Item available from:** Immediately, **Item condition:** in working order, **Delivery terms:** EXW Hormilla (La Rioja), ex foundation, unpackaged, **Payment terms:** 100% payment prior to collection, **dimensions (l x w x h) approx.:** 9,320 x 3,210 x 3,800 mm, **weight approx.:** 29,800 kg



■ HAULOTTE OPTIMUM 8 Electric Scissor Lift Platform

- Electric scissor lift platform
- Serial number CE125210
- Lifting capacity 230 kg
- Maximum platform lifting height approx. 5770 mm
- Platform dimensions approx. 1650 x 700 mm
- Solid tyres
- 2 wheel drive
- Battery 24 V
- Working hours according to counter 1178
- CE Standards
- IMPORTANT: The buyer is responsible for everything related to the loading of this

equipment

Item number: 817676, **Manufacturer:** HAULOTTE, **Model / Type:** OPTIMUM 8, **Year of manufacture:** 2006, **Item available from:** Immediately, **Item condition:** unchecked, **Delivery terms:** EXW Hormilla (La Rioja), ex foundation, unpackaged, **Payment terms:** 100% payment prior to collection, **dimensions (l x w x h) approx.:** 1,650 x 700 x 2,000 mm, **weight approx.:** 1,420 kg



■ HAULOTTE COMPACT 8 Electric Scissor Lift Platform

- Electric scissor lift platform
- Serial number CE112616
- Lifting capacity 350 kg
- Maximum platform lifting height approx. 6200 mm
- Platform dimensions approx. 2300 x 800 mm
- Solid tyres
- 2 wheel drive
- Battery 24 V
- Working hours according to counter 5
- CE Standards
- IMPORTANT: The buyer is responsible for everything related to the loading of this equipment

Item number: 817657, **Manufacturer:** HAULOTTE, **Model / Type:** COMPACT 8, **Year of manufacture:** 2004, **Item available from:** Immediately, **Item condition:** unchecked, **Delivery terms:** EXW Hormilla (La Rioja), ex foundation, unpackaged, **Payment terms:** 100% payment prior to collection, **dimensions (l x w x h) approx.:** 2,400 x 800 x 2,000 mm, **weight approx.:** 1,730 kg



■ HAULOTTE COMPACT 12 DX Diesel Scissor Lift Platform

- Diesel scissor lift platform
- Serial number CD110889
- Lifting capacity 450 kg
- Maximum platform lifting height approx. 10150 mm
- Platform dimensions approx. 2500 x 1540 mm
- Pneumatic tyres
- 4 wheel drive
- DEUTZ F 2L 2011 diesel engine: displacement 1555 cc, power 18 KW
- Working hours according to counter 1807
- CE Standards
- IMPORTANT: The buyer is responsible for everything related to the loading of this equipment

Item number: 817662, **Manufacturer:** HAULOTTE, **Model / Type:** COMPACT 12 DX, **Year of manufacture:** 2006, **Item available from:** Immediately, **Item condition:** unchecked, **Delivery terms:** EXW Hormilla (La Rioja), ex foundation, unpackaged, **Payment terms:** 100% payment prior to collection, **dimensions (l x w x h) approx.:** 3,000 x 1,580 x 2,500 mm, **weight approx.:** 4,080 kg

No. 88



■ POWER TOWERS POWER TOWERS Electric Vertical Mast

Serial Number: 19432413A
Weight: 342kg
Payload: 250kg
No. Pax + allowance: 1 pax(80kg) +170kg
Working Height: 5100mm
Max. Manual Force: 200N
Indoor use only
CE Standard

IMPORTANT:

The customer is responsible for all the loading related to the equipment.
Dimensions and weights are approximate.

Item number: 789405, **Manufacturer:** POWER TOWERS, **Model / Type:** POWER TOWERS, **Year of manufacture:** 2013, **Item available from:** Immediately, **Item condition:** unchecked, **Delivery terms:** EXW Hormilla (La Rioja), ex foundation, unpackaged, **Payment terms:** 100% payment prior to collection, **dimensions (l x w x h) approx.:** 1,520 x 780 x 1,920 mm, **weight approx.:** 310 kg

No. 89



■ POWER TOWERS POWER TOWERS Electric Vertical Mast

Serial Number: 14605010A
Weight: 315kg
Payload: 250kg
No. Pax + allowance: 1 pax (80kg)+170kg
Working Height: 5100mm
Max. Manual Force: 200N
Indoor use only
CE Standard

IMPORTANT:

The customer is responsible for all the loading related to the equipment.
Dimensions and weights are approximate.

Item number: 789425, **Manufacturer:** POWER TOWERS, **Model / Type:** POWER TOWERS, **Year of manufacture:** 2010, **Item available from:** Immediately, **Item condition:** unchecked, **Delivery terms:** EXW Hormilla (La Rioja), ex foundation, unpackaged, **Payment terms:** 100% payment prior to collection, **dimensions (l x w x h) approx.:** 1,520 x 780 x 1,920 mm, **weight approx.:** 310 kg

No. 90



IVECO STRALIS 480 4x2 (AS440t/P) Truck 4x2

Identification Number: WJMM1VUH60C334086

Plate:1516JMZ

ZF intarder

Dual Fuel Tank

AdBlue

Automatic

A/R cab

A/R susp

Mileage: 553.924 km

IMPORTANT:

The buyer is responsible for everything related to the loading of this equipment
Surplex will deliver this vehicle to the buyer with a Sale Notification in DGT (Spanish traffic authorities). This Sale Notification will be invoiced separately for the amount of €100

Item number: 767417, **Manufacturer:** IVECO, **Model / Type:** STRALIS 480 4x2 (AS440t/P), **Year of manufacture:** 2016, **Item available from:** immediately, **Item condition:** unchecked, **Delivery terms:** EXW Hormilla (La Rioja), ex foundation, unpackaged, **Payment terms:** 100% payment prior to collection, **dimensions (l x w x h) approx.:** 6,250 x 3,310 x 2,550 mm, **weight approx.:** 6,855 kg

No. 91



GÜRLESENYIL GLS 3 Cement Silo Trailer

- Cement silo trailer
- Spanish registration number: R 8170 BCY
- Frame number NP9GLS3VSHA198006
- 3-axle
- WABCO EBS pneumatic dual circuit brake system
- Compressor with DEUTZ diesel engine
- Maximum total weight 24000 kg
- Ownership change costs will be paid by the buyer
- MOT certificate costs will be paid by the buyer
- The buyer is responsible for passing MOT in order to circulate in Spain
- IMPORTANT:

• The buyer is responsible for everything related to the loading of this equipment
• Surplex will deliver this vehicle to the buyer with a Sale Notification in DGT (Spanish traffic authorities). This Sale Notification will be invoiced separately for the amount of €100

Item number: 782215, **Manufacturer:** GÜRLESENYIL, **Model / Type:** GLS 3, **Year of manufacture:** 2017, **Item available from:** Immediately, **Item condition:** unchecked, **Delivery terms:** EXW Hormilla (La Rioja), ex foundation, unpackaged, **Payment terms:** 100% payment prior to collection, **dimensions (l x w x h) approx.:** 10,400 x 2,700 x 3,920 mm, **weight approx.:** 8,000 kg



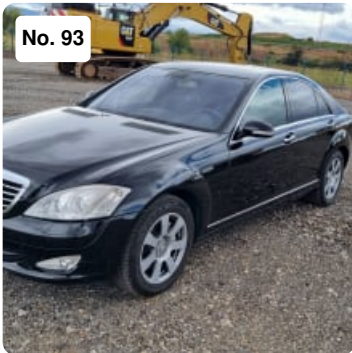
■ POWER TOWERS NANO Electric Vertical Mast

Serial Number: 12914112C
Payload: 200kg
No. Pax + allowance: 1 pax +120kg
Working Height: 4500mm
Max. Manual Force: 200N
Indoor use only
CE Standard

IMPORTANT:

The customer is responsible for all the loading related to the equipment.
Dimensions and weights are approximate.

Item number: 789424, **Manufacturer:** POWER TOWERS, **Model / Type:** NANO, **Item available from:** Immediately, **Item condition:** unchecked, **Delivery terms:** EXW Hormilla (La Rioja), ex foundation, unpackaged, **Payment terms:** 100% payment prior to collection, **dimensions (l x w x h) approx.:** 1,195 x 750 x 1,560 mm, **weight approx.:** 285 kg



■ Mercedes Benz S350 Car

Mileage : 246955
Plate : 6765 GLM
Chassis: WDDD2210561A219980
MOT valid until 09.08.2023

• **IMPORTANT:**

- The buyer is responsible for everything related to the loading of this equipment
- Surplex will deliver this vehicle to the buyer with a Sale Notification in DGT (Spanish traffic authorities). This Sale Notification will be invoiced separately for the amount of €100

Item number: 768289, **Manufacturer:** MERCEDES, **Model / Type:** S350 With GLP, **Year of manufacture:** 2009, **Item available from:** immediately, **Item condition:** unchecked, **Delivery terms:** EXW Hormilla (La Rioja), ex foundation, unpackaged, **Payment terms:** 100% payment prior to collection, **dimensions (l x w x h) approx.:** 5,070 x 1,870 x 1,465 mm, **weight approx.:** 2,000 kg

No. 94



■ GENIE S 85 Diesel Telescopic Boom Lift

Serial Number: S85-2525
Working height : 2790mm
Horizontal reach: 2330
Lift capacity: 227kgs
Platform rotation 160°
Turntable Rotation: 360°
Working Hours: 7797

IMPORTANT:

The customer is responsible for all the loading related to the equipment.
Dimensions and weights are approximate.

Item number: 746139, **Manufacturer:** GENIE, **Model / Type:** S 85, **Year of manufacture:** 2001, **Item available from:** Immediately, **Item condition:** unchecked, **Delivery terms:** EXW Hormilla (La Rioja), ex foundation, unpackaged, **Payment terms:** 100% payment prior to collection, **dimensions (l x w x h) approx.:** 10,670 x 3,070 x 2,800 mm, **weight approx.:** 16,700 kg

No. 95



■ NISSAN CABSTAR E 110 Rollback Truck

- Rollback truck
- Spanish registration number: V-5641-GW
- Frame number VWASBFTL0X1110226
- NISSAN D/BD30D engine: 4 cylinders, displacement 2953 cc, power 78 KW
- Manual transmission, gearbox 5 gears
- Max. Total weight 3500 kg, death weight 2010 kg
- Drivers cabin with 3 seats
- AYERBE electric winch
- Mileage 790875 km according to the counter
- This vehicle is delivered with only one set of keys
- Ownership change costs will be paid by the buyer
- MOT certificate costs will be paid by the buyer
- The buyer is responsible for passing MOT in order to circulate in Spain
- **IMPORTANT:**
- The buyer is responsible for everything related to the loading of this equipment
- Surplex will deliver this vehicle to the buyer with a Sale Notification in DGT (Spanish traffic authorities). This Sale Notification will be invoiced separately for the amount of €100

Item number: 818982, **Manufacturer:** NISSAN, **Model / Type:** CABSTAR E 110, **Year of manufacture:** 1999, **Item available from:** Immediately, **Item condition:** unchecked, **Delivery terms:** EXW Hormilla (La Rioja), ex foundation, unpackaged, **Payment terms:** 100% payment prior to collection, **dimensions (l x w x h) approx.:** 6,382 x 2,000 x 1,950 mm, **weight approx.:** 2,010 kg

No. 96



■ KOMATSU PC 210 LC 8 K Crawler Excavator

- Crawler excavator
- Serial number K52866
- Steel track
- Track width 700 mm
- Bucket capacity approx. 0.47 m³
- Maximum Speed 5.50 km/h
- Maximum horizontal reach approx. 9250 mm
- Digging depth approx. 9400 mm
- Tear-out force 145 kN
- KOMATSU SAA6D107E diesel engine: 6 cylinders, displacement 6690 cc, power 110 KW
- Hydraulic hammer line
- Working hours according to counter 17714
- CE Standards
- IMPORTANT: The buyer is responsible for everything related to the loading of this equipment

Item number: 816212, **Manufacturer:** KOMATSU, **Model / Type:** PC 210 LC 8 K, **Year of manufacture:** 2008, **Item available from:** Immediately, **Item condition:** unchecked, **Delivery terms:** EXW Hormilla (La Rioja), ex foundation, unpackaged, **Payment terms:** 100% payment prior to collection, **dimensions (l x w x h) approx.:** 9,750 x 2,800 x 3,200 mm, **weight approx.:** 22,260 kg

No. 97



■ HIMOINSA HFW 100 T 5 Diesel Electric Generator

- Diesel generator, power generator, electric generator
- Serial number 6107838
- Voltage: 400 V / 230 V / 50 Hz
- Power 98.25 KVA - 78.60 KW
- IVECO NEF45TM2A turbo-diesel engine: 4 cylinders, displacement 4500 cc, power 88.60 KW
- Soundproof
- Operating hours according to the counter 7393

Item number: 818618, **Manufacturer:** HIMOINSA, **Model / Type:** HFW 100 T 5, **Year of manufacture:** 2006, **Item available from:** Immediately, **Item condition:** unchecked, **Delivery terms:** FCA Hormilla (La Rioja), loaded on truck, **Payment terms:** 100% payment prior to collection, **dimensions (l x w x h) approx.:** 3,000 x 1,200 x 1,500 mm, **weight approx.:** 2,000 kg

No. 102



■ JCB 532-70 AGRI Telehandler

- Telehandler
- Spanish registration number: E 9267 BHD
- Serial number JCB5XK2GJK2790857
- Maximum load capacity 3200kg
- Maximum lifting height 7000 mm
- Maximum front reach 3720 mm
- Load capacity at maximum height 2750 kg
- Load capacity at maximum reach 1675 kg
- Reach with 1000 kg load: 3720 mm
- With bucket with useful dimensions approx. 2260 x 1200 x 1000mm
- JCB EcoMax engine, power 81 KW
- IMPORTANT:
 - The buyer is responsible for everything related to the loading of this equipment
 - Surplex will deliver this vehicle to the buyer with a Sale Notification in DGT (Spanish traffic authorities). This Sale Notification will be invoiced separately for the amount of €100

Item number: 782209, **Manufacturer:** JCB, **Model / Type:** 532-70 AGRI, **Year of manufacture:** 2019, **Item available from:** Immediately, **Item condition:** unchecked, **Delivery terms:** EXW Hormilla (La Rioja), ex foundation, unpackaged, **Payment terms:** 100% payment prior to collection, **dimensions (l x w x h) approx.:** 6,380 x 2,360 x 2,500 mm, **weight approx.:** 7,600 kg

No. 105



■ AUDI Q7 TDI QUATTRO All Terrain Vehicle

- All terrain vehicle
- Spanish registration number: 9543 HBC
- Frame number WAUZZZ4L0BD020568
- AUDI CJC turbo-diesel engine: 6 cylinders, displacement 2967 cc, power 176 KW
- Automatic transmission, gearbox 6 gears
- 4 wheel drive
- Maximum speed 210 km/h, acceleration 0-100 km/h: 8.50 sec
- Average consumption 9.10 l/100 km
- Mileage 731268 km according to the counter
- Ownership change costs will be paid by the buyer
- Spanish MOT certificate valid till 28/12/2022
- IMPORTANT:
 - The buyer is responsible for everything related to the loading of this equipment
 - Surplex will deliver this vehicle to the buyer with a Sale Notification in DGT (Spanish traffic authorities). This Sale Notification will be invoiced separately for the amount of €100

Item number: 789485, **Manufacturer:** AUDI, **Model / Type:** Q7 TDI QUATTRO, **Year of manufacture:** 2010, **Item available from:** Immediately, **Item condition:** unchecked, **Delivery terms:** EXW Hormilla (La Rioja), ex foundation, unpackaged, **Payment terms:** 100% payment prior to collection, **dimensions (l x w x h) approx.:** 5,090 x 1,983 x 1,697 mm, **weight approx.:** 2,270 kg

No. 106

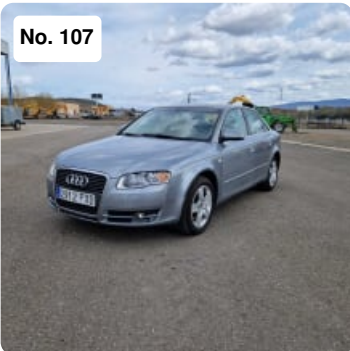


■ HYUNDAI i40 CRDI Car

- Car, vehicle
- Spanish registration number: 0350 KDB
- Frame number KMHL41UAHU100876
- HYUNDAI D4FD turbo-diesel engine: 4 cylinders, displacement 1685 cc, power 85 KW
- Manual transmission, gearbox 6 gears
- Front wheel drive
- Maximum speed 192 km/h, acceleration 0-100 km/h: 12.30 sec
- Average consumption 4.20 l/100 km
- Mileage 201703 km according to the counter
- Ownership change costs will be paid by the buyer
- Spanish MOT certificate valid till 15/03/2023
- IMPORTANT:
 - The buyer is responsible for everything related to the loading of this equipment
 - Surplex will deliver this vehicle to the buyer with a Sale Notification in DGT (Spanish traffic authorities). This Sale Notification will be invoiced separately for the amount of €100

Item number: 789483, **Manufacturer:** HYUNDAI, **Model / Type:** i40 CRDI, **Year of manufacture:** 2017, **Item available from:** Immediately, **Item condition:** unchecked, **Delivery terms:** EXW Hormilla (La Rioja), ex foundation, unpackaged, **Payment terms:** 100% payment prior to collection, **dimensions (l x w x h) approx.:** 4,745 x 1,815 x 1,470 mm, **weight approx.:** 1,572 kg

No. 107



■ AUDI A4 2.0 TDI Car

- Car, vehicle
- Spanish registration number: 2912 FXD
- Frame number WAUZZZ8E48A092895
- AUDI BRE turbo-diesel engine: 4 cylinders, displacement 1968 cc, power 103 KW
- Automatic transmission
- Front wheel drive
- Maximum speed 212 km/h, acceleration 0-100 km/h: 9.70 sec
- Average consumption 5.90 l/100 km
- Mileage 309863 km according to the counter
- This vehicle is delivered with only one set of keys
- Ownership change costs will be paid by the buyer
- MOT certificate costs will be paid by the buyer
- The buyer is responsible for passing MOT in order to circulate in Spain
- IMPORTANT:
 - The buyer is responsible for everything related to the loading of this equipment
 - Surplex will deliver this vehicle to the buyer with a Sale Notification in DGT

(Spanish traffic authorities). This Sale Notification will be invoiced separately for the amount of €100

Item number: 818615, **Manufacturer:** AUDI, **Model / Type:** A4 2.0 TDI, **Year of manufacture:** 2007, **Item available from:** Immediately, **Item condition:** unchecked, **Delivery terms:** EXW Hormilla (La Rioja), ex foundation, unpackaged, **Payment terms:** 100% payment prior to collection, **dimensions (l x w x h) approx.:** 4,586 x 1,772 x 1,397 mm, **weight approx.:** 1,470 kg



■ LIEBEHERR R 932 HDS LITRONIC Crawler Excavator

- Crawler excavator
- Serial number 571-3329
- Steel track
- Track width 600 mm
- Bucket capacity approx. 1.50 m³
- Maximum Speed 5.20 km/h
- LIEBHERR D 914 TI diesel engine: power 124 KW
- Working hours according to counter 7068
- IMPORTANT: The buyer is responsible for everything related to the loading of this equipment

Item number: 789437, **Manufacturer:** LIEBEHERR, **Model / Type:** R 932 HDS LITRONIC, **Year of manufacture:** 1997, **Item available from:** Immediately, **Item condition:** unchecked, **Delivery terms:** EXW Hormilla (La Rioja), ex foundation, unpackaged, **Payment terms:** 100% payment prior to collection, **dimensions (l x w x h) approx.:** 10,000 x 3,000 x 3,200 mm, **weight approx.:** 27,000 kg



■ GENIE Z 34 Diesel Articulated Lift Platform

- Diesel articulated lift platform
- Serial number Z34-2841
- Lifting capacity 227 kg
- Maximum platform lifting height approx. 10600 mm
- Maximum horizontal reach approx. 6800 mm
- Platform dimensions approx. 1420 x 760 mm
- Pneumatic tyres
- KUBOTA D905 B-22 engine: 3 cylinders, displacement 898 cc, power 18.50 KW
- Working hours according to counter 5050
- CE Standards
- IMPORTANT: The buyer is responsible for everything related to the loading of this equipment

Item number: 789273, **Manufacturer:** GENIE, **Model / Type:** Z 34, **Year of manufacture:** 2001, **Item available from:** Immediately, **Item condition:** unchecked, **Delivery terms:** EXW Hormilla (La Rioja), ex foundation, unpackaged, **Payment terms:** 100% payment prior to collection, **dimensions (l x w x h) approx.:** 5,800 x 1,500 x 2,000 mm, **weight approx.:** 4,800 kg

No. 114



■ DOOSAN MEGA 250 V Wheel Loader

- Serial number AB0C65004195
- Standard tires 20.5 R25
- Bucket width 2740 mm
- Standards bucket capacity 2.40 m³
- Steering type KL
- Maximum Speed 37 km/h
- Maximum pouring height 2730 mm
- Lifting power 129 kN
- DAEWOO DB 58 TIS engine: displacement 5800 cc, power 121 KW
- Working hours according to meter 12500
- CE Standards

IMPORTANT:

The customer is responsible for all the loading related to the equipment.
Dimensions and weights are approximate.

Item number: 755204, **Manufacturer:** DOOSAN, **Model / Type:** MEGA 250 V, **Year of manufacture:** 2007, **Item available from:** Immediately, **Item condition:** in working order, **Delivery terms:** EXW Hormilla (La Rioja), ex foundation, unpackaged, **Payment terms:** 100% payment prior to collection, **dimensions (l x w x h) approx.:** 7,500 x 2,570 x 3,290 mm, **weight approx.:** 13,800 kg

No. 119



■ AUDI ALLROAD 2.5 TDI QUATTRO Car

- Car, vehicle
- Spanish registration number: 6125 BKW
- Frame number WAUZZZ4BZ1N159791
- AUDI AKE turbo-diesel engine: 6 cylinders, displacement 2496 cc, power 132 KW
- Manual transmission, gearbox 6 gears
- 4 wheel drive
- Maximum speed 207 km/h, acceleration 0-100 km/h: 9.50 sec
- Average consumption 8.70 l/100 km
- Mileage 320663 km according to the counter
- This vehicle is delivered with only one set of keys
- Ownership change costs will be paid by the buyer
- MOT certificate costs will be paid by the buyer (Spanish MOT certificate valid till 25/07/2023)
- The buyer is responsible for passing MOT in order to circulate in Spain
- IMPORTANT:
- The buyer is responsible for everything related to the loading of this equipment

• Surplex will deliver this vehicle to the buyer with a Sale Notification in DGT (Spanish traffic authorities). This Sale Notification will be invoiced separately for the amount of €100

Item number: 818979, **Manufacturer:** AUDI, **Model / Type:** ALLROAD 2.5 TDI QUATTRO, **Year of manufacture:** 2001, **Item available from:** Immediately, **Item condition:** unchecked, **Delivery terms:** EXW Hormilla (La Rioja), ex foundation, unpackaged, **Payment terms:** 100% payment prior to collection, **dimensions (l x w x h) approx.:** 4,810 x 1,853 x 1,482 mm, **weight approx.:** 1,790 kg



■ IVECO STRALIS 500 (AS440t/P) Truck 4x2

Identification Number: WJMM1VUH60C314100

Plate: 4534JDZ

ZF intarder

Dual Fuel Tank

AdBlue, Automatic

A/R cab

A/R susp

Mileage: 658.420 km

IMPORTANT:

The buyer is responsible for everything related to the loading of this equipment

Surplex will deliver this vehicle to the buyer with a Sale Notification in DGT (Spanish traffic authorities). This Sale Notification will be invoiced separately for the amount of €100

Item number: 767415, **Manufacturer:** IVECO, **Model / Type:** STRALIS 500 4x2 (AS440t/P), **Year of manufacture:** 2015, **Item available from:** immediately, **Item condition:** unchecked, **Delivery terms:** EXW Hormilla (La Rioja), ex foundation, unpackaged, **Payment terms:** 100% payment prior to collection, **dimensions (l x w x h) approx.:** 6,250 x 3,310 x 2,550 mm, **weight approx.:** 6,855 kg



No. 126

■ MERCEDES-BENZ ATEGO 1828 4x2 Skip Loader Truck

- Skip loader truck
- Spanish registration number: 8413 BWY
- Mileage 592917 km according to the counter
- Ownership change costs will be paid by the buyer
- The buyer is responsible for passing MOT in order to circulate in Spain
- IMPORTANT:
- The buyer is responsible for everything related to the loading of this equipment
- Surplex will deliver this vehicle to the buyer with a Sale Notification in DGT (Spanish traffic authorities). This Sale Notification will be invoiced separately for the amount of €100

Item number: 789805, **Manufacturer:** MERCEDES BENZ, **Model / Type:** ATEGO 1828 4x2, **Year of manufacture:** 2002, **Item available from:** Immediately, **Item condition:** unchecked, **Delivery terms:** EXW Hormilla (La Rioja), ex foundation, unpackaged, **Payment terms:** 100% payment prior to collection, **dimensions (l x w x h) approx.:** 7,000 x 2,800 x 2,700 mm, **weight approx.:** 9,050 kg



No. 127

■ HYVALIFT NG 2014 TA Chain Skip Loader Equipment

- Chain skip loader equipment
- Serial number 26404505
- Loading capacity 24000 kg
- IMPORTANT: The buyer is responsible for everything related to the loading of this equipment

Item number: 789807, **Manufacturer:** HYVALIFT, **Model / Type:** NG 2014 TA, **Year of manufacture:** 2006, **Item available from:** Immediately, **Item condition:** unchecked, **Delivery terms:** EXW Hormilla (La Rioja), ex foundation, unpackaged, **Payment terms:** 100% payment prior to collection, **dimensions (l x w x h) approx.:** 6,000 x 2,470 x 2,900 mm, **weight approx.:** 3,500 kg



No. 128

■ ITM ANTARES 70 Portable Hot Air Generator

- Portable hot air generator
- Serial number 99110364
- Voltage 230 V
- Thermic power 68.80 KW - 59170 kcal/h
- Air capacity 3500 m³/h
- Diesel fuel

Item number: 790358, **Manufacturer:** ITM, **Model / Type:** ANTARES 70, **Year of manufacture:** 1999, **Item available from:** Immediately, **Item condition:** unchecked, **Delivery terms:** FCA Hormilla (La Rioja), loaded on truck, **Payment terms:** 100% payment prior to collection, **dimensions (l x w x h) approx.:** 2,000 x 800 x 1,300 mm, **weight approx.:** 200 kg

No. 132



■ JCB JS 175 W Wheeled Excavator

- Wheeled excavator
- Spanish registration number: E 0942 BCV
- Serial number 0885259
- Bucket useful dimensions approx. 1100 x 1100 x 800 mm
- Dozer blade 2480 mm long
- Maximum horizontal reach 9195 mm
- Digging depth 5835 mm
- Tear-out force 105 kN
- ISUZU 6BG1T engine: 6 cylinders, displacement 6494 cc, power 102 KW
- Working hours according to counter 16002
- CE Standards
- IMPORTANT:
 - The buyer is responsible for everything related to the loading of this equipment
 - Surplex will deliver this vehicle to the buyer with a Sale Notification in DGT (Spanish traffic authorities). This Sale Notification will be invoiced separately for the amount of €100

Item number: 787776, **Manufacturer:** JCB, **Model / Type:** JS 175 W, **Year of manufacture:** 2003, **Item available from:** Immediately, **Item condition:** unchecked, **Delivery terms:** EXW Hormilla (La Rioja), ex foundation, unpackaged, **Payment terms:** 100% payment prior to collection, **serial number:** 0885259 , **dimensions (l x w x h) approx.:** 8,200 x 2,500 x 3,100 mm, **weight approx.:** 17,750 kg

No. 200



■ Electric concrete mixer

Item number: 774535, **Item available from:** Immediately, **Item condition:** unchecked, **Delivery terms:** FCA Hormilla (La Rioja), loaded on truck, **Payment terms:** 100% payment prior to collection, **dimensions (l x w x h) approx.:** 1,650 x 600 x 1,250 mm, **weight approx.:** 100 kg

No. 250



■ Forestry Self Loader TIMBERJACK 1210 B

Serial number 12100614

Engine power 127 KW

Crane LOGLIFT 71 F (hydraulic distributor is missing)

Working load 14000 kg

Working hours approx. 18000

This machine is stopped since 2016 because the company to which it belonged was closed due

to insolvency. The machine was working perfectly until that time, but in this time it has suffered the following damages: the alternator, the air conditioning system and the hydraulic distributor of the crane were stolen. The exhaust pipe cover is missing, so water has entered the engine and the turbo and they are rusted and stuck.

There is no documentation for this machine

The machine cannot be moved so it has to be loaded with a crane.

IMPORTANT:

The customer is responsible for all the loading related to the equipment.

Dimensions and weights are approximate.

Item number: 762964, **Manufacturer:** TIMBERJACK, **Model / Type:** 1210 B, **Year of manufacture:** 1997, **Item available from:** Immediately, **Item condition:** unchecked, **Delivery terms:** EXW San Cristóbal de Cea - Ourense, ex foundation, unpackaged, **Payment terms:** 100% payment prior to collection, **dimensions (l x w x h) approx.:** 9,800 x 2,880 x 3,760 mm, **weight approx.:** 16,000 kg



■ Ripper

Ripper

IMPORTANT:

The customer is responsible for all the loading related to the equipment.

Dimensions and weights are estimated.

Item number: 784215, **Manufacturer:** LUCLA POWER SOLUTIONS, **Year of manufacture:** 2022, **Item condition:** unchecked, **Delivery terms:** FCA Benavides de Orbigo (Leon), free on truck, **Payment terms:** 100% payment prior to collection, **dimensions (l x w x h) approx.:** 800 x 800 x 500 mm, **weight approx.:** 70 kg