

## Auction Catalogue

### Drilling & Construction Machinery (Portugal)

The items are in different locations (see item description)

Viewing by appointment only!

For the inspection, please contact Frederico Serradas:

frederico.serradas@surplex.com

**51 lots**

#### **Bidding ends:**

Friday, 31/03/2023, 11:00(local time)

Bids are welcome immediately and can be placed at:

#### **Contact:**

Frederico Serradas

+351 919990151

frederico.serradas@surplex.com

www.surplex.com

#### **Viewing:**

The items are in different locations (see item description)

Viewing by appointment only!

For the inspection, please contact Frederico Serradas:

frederico.serradas@surplex.com

#### **Description:**

##### **Drilling & Construction Machinery:**

- INGERSOLL RAND Compressor
- COMMACHIO MC3 Drilling Equipment
- ATLAS COPCO ROC 400 A Drilling Equipment
- CATERPILLAR 302.7 CR Mini Hydraulic Excavator
- TERRA HAMMER Underground Piercing Tool with steel pipe
- AVSDRILL H 1.5 MT Ground Drilling Machine



### ■ INGERSOLL RAND 12/235 Compressor on Wheels

INGERSOLL RAND 12/235 Compressor on Wheels

VIN SCZ12235F5Y892352

11.968 hours

Max Allowable Working Pressure (BAR) 13,1

Normal Working Pressure (BAR)

12,0

Input Shaft Power (kW)

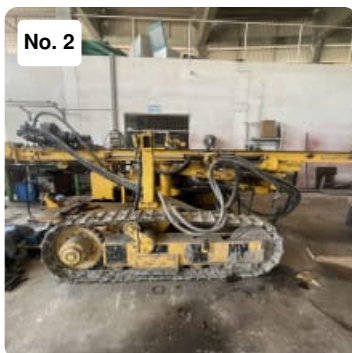
224,0

Motor/Engine Speed (rev/min)

1800,0

• IMPORTANT: The buyer is responsible for everything related to the loading of this equipment

**Item number:** 811245, **Manufacturer:** INGERSOLL-RAND, **Model / Type:** 12/235, **Year of manufacture:** 2005, **Item available from:** Immediately, **Item condition:** unchecked, **Delivery terms:** EXW Aveiro, ex foundation, unpackaged, **Payment terms:** 100% payment prior to collection, **dimensions (l x w x h) approx.:** 4,500 x 2,100 x 2,300 mm, **weight approx.:** 4,800 kg



### ■ ATLAS COPCO ROC 400A-00 Drilling Equipment

ATLAS COPCO ROC 400A-00 Drilling Equipment

• IMPORTANT: The buyer is responsible for everything related to the loading of this equipment

**Item number:** 811251, **Manufacturer:** ATLAS COPCO, **Model / Type:** ROC 400A-00, **Item available from:** Immediately, **Item condition:** unchecked, **Delivery terms:** EXW Aveiro, ex foundation, unpackaged, **Payment terms:** 100% payment prior to collection, **dimensions (l x w x h) approx.:** 6,000 x 2,300 x 2,000 mm, **weight approx.:** 4,000 kg



### ■ COMACCHIO MC3 Drilling Equipment

COMMACCHIO MC3 Drilling Equipment

no. 3432

Engine Power

55,4

kW

Mast Feed Force 1.200 - 2.200

mm

Feed Force

2.500

daN

Retract Force

2.500

daN

Rotary Torque Range 400 - 510 daNm

Rotary Speed Range 105 - 560 rpm

Clamp Range

45

- 260 mm

• **IMPORTANT:** The buyer is responsible for everything related to the loading of this equipment

**Item number:** 811250, **Manufacturer:** COMACCHIO, **Model / Type:** MC3, **Year of manufacture:** 2019, **Item available from:** Immediately, **Item condition:** unchecked, **Delivery terms:** EXW Samora Correia, ex foundation, unpackaged, **Payment terms:** 100% payment prior to collection, **dimensions (l x w x h) approx.:** 3,800 x 955 x 2,390 mm, **weight approx.:** 4,000 kg



#### ■ ATLAS COPCO XAHS-426 Compressor on Wheels

ATLAS COPCO XAHS-426 Compressor on Wheels

6.937 hours

Normal Working Pressure (BAR)

12,0

Input Shaft Power (kW)

224,0

CATERPILLAR C9DI Engine

• **IMPORTANT:** The buyer is responsible for everything related to the loading of this equipment

**Item number:** 811254, **Manufacturer:** ATLAS COPCO, **Model / Type:** XAHS-426, **Item available from:** Immediately, **Item condition:** unchecked, **Delivery terms:** EXW Aveiro, ex foundation, unpackaged, **Payment terms:** 100% payment prior to collection, **dimensions (l x w x h) approx.:** 4,050 x 2,140 x 2,410 mm, **weight approx.:** 6,800 kg



#### ■ KST 500 KG Work Platform

Lot composed by:

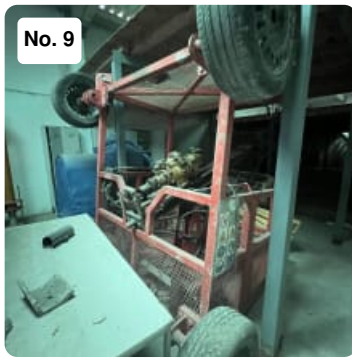
KST 500 kg Work Platform

TRACTEL TU16H Trifors

TRACTEL BS20-301 Blocostop

• **IMPORTANT:** The buyer is responsible for everything related to the loading of this equipment

**Item number:** 811244, **Manufacturer:** KST, **Model / Type:** 500 KG, **Item available from:** Immediately, **Item condition:** unchecked, **Delivery terms:** EXW Aveiro, ex foundation, unpackaged, **Payment terms:** 100% payment prior to collection, **dimensions (l x w x h) approx.:** 2,500 x 2,000 x 2,500 mm, **weight approx.:** 1,500 kg



No. 9

### ■ Work Platform

Lot composed by:

Work Platform

Trifors

Blocostop

• **IMPORTANT:** The buyer is responsible for everything related to the loading of this equipment

**Item number:** 811248, **Item available from:** Immediately, **Item condition:** unchecked, **Delivery terms:** EXW Aveiro, ex foundation, unpackaged, **Payment terms:** 100% payment prior to collection, **dimensions (l x w x h) approx.:** 2,500 x 2,000 x 2,500 mm, **weight approx.:** 1,500 kg



No. 10

### ■ TECNASOL JR-16 Work Platform

Lot composed by:

TECNASOL JR-16 Work Platform (no. 0010 | max. 2 persons)

Trifors

Blocostop

• **IMPORTANT:** The buyer is responsible for everything related to the loading of this equipment

**Item number:** 811249, **Manufacturer:** TECNASOL, **Model / Type:** JR-16, **Year of manufacture:** 1999, **Item available from:** Immediately, **Item condition:** unchecked, **Delivery terms:** EXW Aveiro, ex foundation, unpackaged, **Payment terms:** 100% payment prior to collection, **dimensions (l x w x h) approx.:** 2,500 x 2,000 x 2,500 mm, **weight approx.:** 1,500 kg

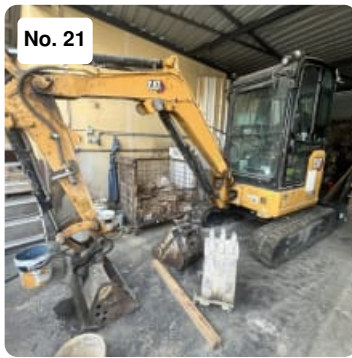


No. 15

### ■ Drilling Equipment

• **IMPORTANT:** The buyer is responsible for everything related to the loading of this equipment

**Item number:** 811255, **Item available from:** Immediately, **Item condition:** unchecked, **Delivery terms:** EXW Aveiro, ex foundation, unpackaged, **Payment terms:** 100% payment prior to collection, **dimensions (l x w x h) approx.:** 3,000 x 500 x 500 mm, **weight approx.:** 250 kg



#### ■ CATERPILLAR 302.7 CR Mini Excavator

CATERPILLAR 302.7 CR Mini Excavator

broken windows

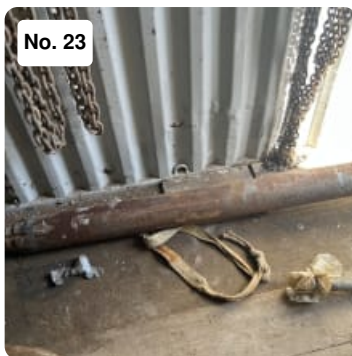
PIN CAT03027ECZ600173

Engine Modelo C1.1 Turbo

18.4 kW

- IMPORTANT: The buyer is responsible for everything related to the loading of this equipment

**Item number:** 811247, **Manufacturer:** CATERPILLAR, **Model / Type:** 302.7 CR, **Year of manufacture:** 2021, **Item available from:** Immediately, **Item condition:** unchecked, **Delivery terms:** EXW Sebolido, ex foundation, unpackaged, **Payment terms:** 100% payment prior to collection, **dimensions (l x w x h) approx.:** 3,750 x 1,570 x 2,480 mm, **weight approx.:** 2,690 kg



#### ■ TERRA HAMMER Underground Piercing Tool with steel pipe

- IMPORTANT: The buyer is responsible for everything related to the loading of this equipment

**Item number:** 811252, **Manufacturer:** TERRA, **Model / Type:** HAMMER, **Item available from:** Immediately, **Item condition:** unchecked, **Delivery terms:** EXW Sines, ex foundation, unpackaged, **Payment terms:** 100% payment prior to collection, **dimensions (l x w x h) approx.:** 2,000 x 1,000 x 400 mm, **weight approx.:** 150 kg



#### ■ AVSDRILL H 1.5 MT Ground Drilling Machine

AVSDRILL H 1.5 MT Ground Drilling Machine

with accessories

- IMPORTANT: The buyer is responsible for everything related to the loading of this equipment

**Item number:** 811246, **Manufacturer:** AVSDRILL, **Model / Type:** H 1.5 MT, **Year of manufacture:** 1992, **Item available from:** Immediately, **Item condition:** unchecked, **Delivery terms:** EXW Cercal do Alentejo, ex foundation, unpackaged, **Payment terms:** 100% payment prior to collection, **dimensions (l x w x h) approx.:** 2,000 x 2,000 x 14,000 mm, **weight approx.:** 1,500 kg



No. 25



■ **PRAMAC HLT-2 Led Lighting Tower**

PRAMAC HLT-2 Led Lighting Tower

Serial number A00413

YOM: 2008

Without generator

CE Standards

**Item number:** 743941, **Manufacturer:** PRAMAC, **Model / Type:** HLT-2, **Year of manufacture:** 2008, **Item available from:** Immediately, **Item condition:** unchecked, **Delivery terms:** FCA Porto Alto, Samora Correia, loaded on truck, **Payment terms:** 100% payment prior to collection, **dimensions (l x w x h) approx.:** 4,400 x 1,750 x 2,000 mm, **weight approx.:** 850 kg

No. 26



■ **HIMOINSA T.ILUM A700 6FOCOS 1500W L.RECTA Led Lighting Tower**

HIMOINSA T.ILUM A700 6FOCOS 1500W L.RECTA Led Lighting Tower

Serial number 6100776

YOM: 2006

Without generator

CE Standards

**Item number:** 811925, **Manufacturer:** HIMOINSA, **Model / Type:** T.ILUM A700 6FOCOS 1500W L.RECTA, **Year of manufacture:** 2006, **Item available from:** Immediately, **Item condition:** unchecked, **Delivery terms:** FCA Porto Alto, Samora Correia, loaded on truck, **Payment terms:** 100% payment prior to collection, **dimensions (l x w x h) approx.:** 3,750 x 1,500 x 1,950 mm, **weight approx.:** 850 kg

No. 27



■ **HIMOINSA A800 L.REC 6\*1500W CUA.YOD 400V/50HZ Power & lighting (Construction)**

**Item number:** 811928, **Manufacturer:** HIMOINSA, **Model / Type:** A800 L.REC 6\*1500W CUA.YOD 400V/50HZ, **Year of manufacture:** 2008, **Item available from:** Immediately, **Item condition:** unchecked, **Delivery terms:** FCA Porto Alto, Samora Correia, loaded on truck, **Payment terms:** 100% payment prior to collection, **dimensions (l x w x h) approx.:** 4,200 x 1,750 x 2,200 mm, **weight approx.:** 850 kg

No. 28



■ **HIMOINSA T.ILUM A700 6FOCOS 1500W L.RECTA Led Lighting Tower**

HIMOINSA T.ILUM A700 6FOCOS 1500W L.RECTA Led Lighting Tower

Serial number 6100777

YOM: 2006

Without generator

CE Standards

**Item number:** 811930, **Manufacturer:** HIMOINSA, **Model / Type:** T.ILUM A700 6FOCOS 1500W L.RECTA, **Year of manufacture:** 2006, **Item available from:** Immediately, **Item condition:** unchecked, **Delivery terms:** FCA Porto Alto, Samora Correia, loaded on truck, **Payment terms:** 100% payment prior to collection, **dimensions (l x w x h) approx.:** 3,750 x 1,500 x 1,950 mm, **weight approx.:** 850 kg

No. 29



■ **PRAMAC HLT-2 Led Lighting Tower**

PRAMAC HLT-2 Led Lighting Tower

Serial number A00408

YOM: 2008

Without generator

CE Standards

**Item number:** 813097, **Manufacturer:** PRAMAC, **Model / Type:** HLT-2, **Year of manufacture:** 2008, **Item available from:** Immediately, **Item condition:** unchecked, **Delivery terms:** EXW Porto Alto, Samora Correia, ex foundation, unpackaged, **Payment terms:** 100% payment prior to collection, **dimensions (l x w x h) approx.:** 4,400 x 1,750 x 2,000 mm, **weight approx.:** 850 kg

No. 30



■ **PRAMAC HLT-2 Led Lighting Tower**

PRAMAC HLT-2 Led Lighting Tower

Serial number A00424

YOM: 2008

Without generator

CE Standards

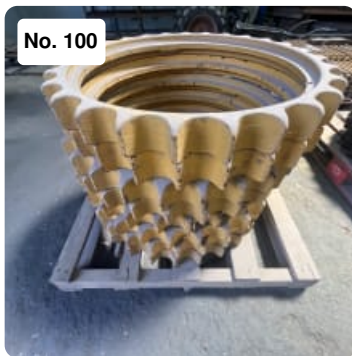
**Item number:** 813101, **Manufacturer:** PRAMAC, **Model / Type:** HLT-2, **Year of manufacture:** 2008, **Item available from:** Immediately, **Item condition:** unchecked, **Delivery terms:** FCA Porto Alto, Samora Correia, loaded on truck, **Payment terms:** 100% payment prior to collection, **dimensions (l x w x h) approx.:** 4,400 x 1,750 x 2,000 mm, **weight approx.:** 850 kg



### ■ GESAN DVS 150 Power Generator

Power generator  
 Serial number 227768  
 YOM: 2007  
 Power: 120 kW  
 Working speed: 1500 Rpm  
 Frequency: 50 Hz  
 Voltage: 230-400 V  
 Engine: VOLVO PENTA TAD 731 GE  
 Fuel: Diesel  
 CE Standards

**Item number:** 813559, **Manufacturer:** GESAN, **Model / Type:** DVS 150, **Year of manufacture:** 2007, **Item available from:** Immediately, **Item condition:** unchecked, **Delivery terms:** FCA Porto Alto, Samora Correia, loaded on truck, **Payment terms:** 100% payment prior to collection, **dimensions (l x w x h) approx.:** 3,530 x 1,140 x 1,840 mm, **weight approx.:** 2,628 kg



### ■ I-TRAC Lot of 8 Aro Sprocket

**Item number:** 758407, **Model / Type:** I-TRAC, **Item available from:** Immediately, **Item condition:** unchecked, **Delivery terms:** FCA, loaded on truck, **Payment terms:** 100% payment prior to collection, **dimensions (l x w x h) approx.:** 1,200 x 800 x 1,200 mm, **weight approx.:** 150 kg



### ■ D57 S-1/60 (27D) Lot of 2 Aro Sprocket

**Item number:** 758391, **Model / Type:** D57 S-1/60 (27D) , **Item available from:** Immediately, **Item condition:** unchecked, **Delivery terms:** FCA, loaded on truck, **Payment terms:** 100% payment prior to collection, **dimensions (l x w x h) approx.:** 1,200 x 800 x 1,200 mm, **weight approx.:** 100 kg



### ■ AKERM EC200 (23D) Lot of 7 Aro Sprocket

**Item number:** 758412, **Manufacturer:** AKERM, **Model / Type:** EC200 (23D) , **Item available from:** Immediately, **Item condition:** unchecked, **Delivery terms:** FCA, loaded on truck, **Payment terms:** 100% payment prior to collection, **dimensions (l x w x h) approx.:** 1,200 x 800 x 1,200 mm, **weight approx.:** 200 kg





■ JCB JS200LC Lot of 2 Aro Sprocket

**Item number:** 758396, **Manufacturer:** JCB, **Model / Type:** JS200LC , **Item available from:** Immediately, **Item condition:** unchecked, **Delivery terms:** FCA, loaded on truck, **Payment terms:** 100% payment prior to collection, **dimensions (l x w x h) approx.:** 1,200 x 800 x 1,200 mm, **weight approx.:** 100 kg



■ Aro Sprocket

**Item number:** 758402, **Item available from:** Immediately, **Item condition:** unchecked, **Delivery terms:** FCA, loaded on truck, **Payment terms:** 100% payment prior to collection, **dimensions (l x w x h) approx.:** 1,200 x 800 x 1,200 mm, **weight approx.:** 50 kg



■ Aro Sprocket

**Item number:** 758399, **Item available from:** Immediately, **Item condition:** unchecked, **Delivery terms:** FCA, loaded on truck, **Payment terms:** 100% payment prior to collection, **dimensions (l x w x h) approx.:** 1,200 x 800 x 1,200 mm, **weight approx.:** 50 kg



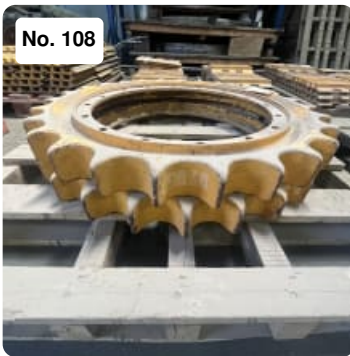
■ CAT 215 Aro Sprocket

**Item number:** 758404, **Manufacturer:** CAT, **Model / Type:** 215 , **Item available from:** Immediately, **Item condition:** unchecked, **Delivery terms:** FCA, loaded on truck, **Payment terms:** 100% payment prior to collection, **dimensions (l x w x h) approx.:** 1,200 x 800 x 1,200 mm, **weight approx.:** 50 kg



■ **D60/D65 (B3D29) Lot of 4 Aro Sprocket**

**Item number:** 758389, **Model / Type:** D60/D65 (B3D29) , **Item available from:** Immediately, **Item condition:** unchecked, **Delivery terms:** FCA, loaded on truck, **Payment terms:** 100% payment prior to collection, **dimensions (l x w x h) approx.:** 1,200 x 800 x 1,200 mm, **weight approx.:** 200 kg



■ **850 (27D) Lot of 2 Aro Sprocket**

**Item number:** 758403, **Model / Type:** 850 (27D), **Item available from:** Immediately, **Item condition:** unchecked, **Delivery terms:** FCA, loaded on truck, **Payment terms:** 100% payment prior to collection, **dimensions (l x w x h) approx.:** 1,200 x 800 x 1,200 mm, **weight approx.:** 100 kg



■ **J9E18 Lot of 2 Aro Sprocket**

**Item number:** 758395, **Model / Type:** J9E18 , **Item available from:** Immediately, **Item condition:** unchecked, **Delivery terms:** FCA, loaded on truck, **Payment terms:** 100% payment prior to collection, **dimensions (l x w x h) approx.:** 1,200 x 800 x 1,200 mm, **weight approx.:** 100 kg



■ **VOLVO EC360 Lot of 2 Aro Sprocket**

**Item number:** 758390, **Manufacturer:** VOLVO, **Model / Type:** EC360 , **Item available from:** Immediately, **Item condition:** unchecked, **Delivery terms:** FCA, loaded on truck, **Payment terms:** 100% payment prior to collection, **dimensions (l x w x h) approx.:** 1,200 x 800 x 1,200 mm, **weight approx.:** 100 kg



#### ■ BERCÓ Aro Sprocket

**Item number:** 758392, **Manufacturer:** BERCÓ, **Item available from:** Immediately, **Item condition:** unchecked, **Delivery terms:** FCA, loaded on truck, **Payment terms:** 100% payment prior to collection, **dimensions (l x w x h) approx.:** 1,200 x 800 x 1,200 mm, **weight approx.:** 50 kg



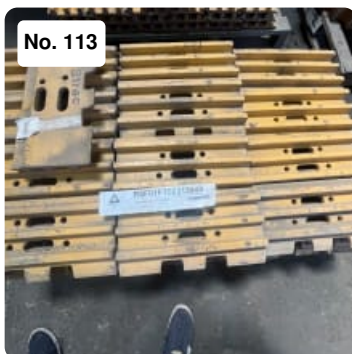
#### ■ D5/50 (27D) Lot of Aro Sprocket

It includes:

2 x aro sprocket

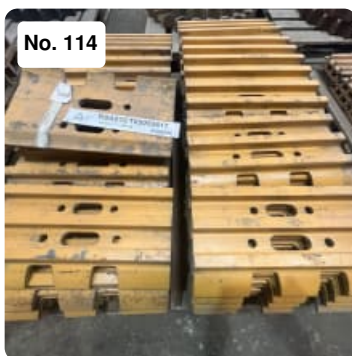
4 x aro sprocket segment

**Item number:** 758383, **Model / Type:** D5/50 (27D) , **Item available from:** Immediately, **Item condition:** unchecked, **Delivery terms:** FCA, loaded on truck, **Payment terms:** 100% payment prior to collection, **dimensions (l x w x h) approx.:** 1,200 x 800 x 1,200 mm, **weight approx.:** 200 kg



#### ■ Lot of 68 Pach 20"

**Item number:** 758387, **Model / Type:** 20" , **Item available from:** Immediately, **Item condition:** unchecked, **Delivery terms:** FCA, loaded on truck, **Payment terms:** 100% payment prior to collection, **dimensions (l x w x h) approx.:** 1,200 x 800 x 1,200 mm, **weight approx.:** 400 kg



#### ■ 17"-2V5114 Lot of 66 Pach

**Item number:** 758377, **Model / Type:** 17"-2V5114 , **Item available from:** Immediately, **Item condition:** unchecked, **Delivery terms:** FCA, loaded on truck, **Payment terms:** 100% payment prior to collection, **dimensions (l x w x h) approx.:** 1,200 x 800 x 1,200 mm, **weight approx.:** 400 kg



No. 115

#### ■ 20" Lot of 78 Pach

**Item number:** 758380, **Model / Type:** 20" , **Item available from:** Immediately, **Item condition:** unchecked, **Delivery terms:** FCA, loaded on truck, **Payment terms:** 100% payment prior to collection, **dimensions (l x w x h) approx.:** 1,200 x 800 x 1,200 mm, **weight approx.:** 400 kg



No. 116

#### ■ 24" Lot of 6 Pach

**Item number:** 758406, **Model / Type:** 24", **Item available from:** Immediately, **Item condition:** unchecked, **Delivery terms:** FCA, loaded on truck, **Payment terms:** 100% payment prior to collection, **dimensions (l x w x h) approx.:** 1,200 x 800 x 1,200 mm, **weight approx.:** 200 kg



No. 117

#### ■ Lot of 7 Pach

Pach 20" x 4  
Pach 24" ESS D9L FURO1 x 3

**Item number:** 758409, **Item available from:** Immediately, **Item condition:** unchecked, **Delivery terms:** FCA, loaded on truck, **Payment terms:** 100% payment prior to collection, **dimensions (l x w x h) approx.:** 1,200 x 800 x 1,200 mm, **weight approx.:** 100 kg



No. 118

#### ■ 14" D4/941 5/8 Lot of 39 Pach

**Item number:** 758388, **Model / Type:** 14" D4/941 5/8, **Item available from:** Immediately, **Item condition:** unchecked, **Delivery terms:** FCA, loaded on truck, **Payment terms:** 100% payment prior to collection, **dimensions (l x w x h) approx.:** 1,200 x 800 x 1,200 mm, **weight approx.:** 350 kg





■ 15" D5/951 5/8 Lot of 39 Pach

**Item number:** 758394, **Model / Type:** 15" D5/951 5/8, **Item available from:** Immediately, **Item condition:** unchecked, **Delivery terms:** FCA, loaded on truck, **Payment terms:** 100% payment prior to collection, **dimensions (l x w x h) approx.:** 1,200 x 800 x 1,200 mm, **weight approx.:** 350 kg



■ Lot of 6 Pach

**Item number:** 758413, **Item available from:** Immediately, **Item condition:** unchecked, **Delivery terms:** FCA, loaded on truck, **Payment terms:** 100% payment prior to collection, **dimensions (l x w x h) approx.:** 1,200 x 800 x 1,200 mm, **weight approx.:** 80 kg



■ Lot of 14 Pach

Pach D3 x 10  
pach 941 x 4

**Item number:** 758375, **Item available from:** Immediately, **Item condition:** unchecked, **Delivery terms:** FCA, loaded on truck, **Payment terms:** 100% payment prior to collection, **dimensions (l x w x h) approx.:** 1,200 x 800 x 1,200 mm, **weight approx.:** 90 kg



■ Lot of 13 Double Rollers

**Item number:** 758398, **Item available from:** Immediately, **Item condition:** unchecked, **Delivery terms:** FCA, loaded on truck, **Payment terms:** 100% payment prior to collection, **dimensions (l x w x h) approx.:** 1,200 x 800 x 1,200 mm, **weight approx.:** 400 kg





■ Lot of 7 Rollers

**Item number:** 758376, **Item available from:** Immediately, **Item condition:** unchecked, **Delivery terms:** FCA, loaded on truck, **Payment terms:** 100% payment prior to collection, **dimensions (l x w x h) approx.:** 1,200 x 800 x 1,200 mm, **weight approx.:** 400 kg



■ Lot of 8 Rollers

**Item number:** 758382, **Item available from:** Immediately, **Item condition:** unchecked, **Delivery terms:** FCA, loaded on truck, **Payment terms:** 100% payment prior to collection, **dimensions (l x w x h) approx.:** 1,200 x 800 x 1,200 mm, **weight approx.:** 200 kg



■ Lot of 43 Rollers

**Item number:** 758393, **Item available from:** Immediately, **Item condition:** unchecked, **Delivery terms:** FCA, loaded on truck, **Payment terms:** 100% payment prior to collection, **dimensions (l x w x h) approx.:** 4,200 x 800 x 4,200 mm, **weight approx.:** 550 kg



■ R942-B5 Lot of 2 Aro Sprocket

**Item number:** 758397, **Model / Type:** R942-B5, **Item available from:** Immediately, **Item condition:** unchecked, **Delivery terms:** FCA, loaded on truck, **Payment terms:** 100% payment prior to collection, **dimensions (l x w x h) approx.:** 1,200 x 800 x 1,200 mm, **weight approx.:** 100 kg



■ CAT D62 Lot of 2 Aro Sprocket

**Item number:** 758401, **Manufacturer:** CAT, **Model / Type:** D62 , **Item available from:** Immediately, **Item condition:** unchecked, **Delivery terms:** FCA, loaded on truck, **Payment terms:** 100% payment prior to collection, **dimensions (l x w x h) approx.:** 1,200 x 800 x 1,200 mm, **weight approx.:** 100 kg



■ Lot of 2 Aro Sprocket

**Item number:** 758384, **Item available from:** Immediately, **Item condition:** unchecked, **Delivery terms:** FCA, loaded on truck, **Payment terms:** 100% payment prior to collection, **dimensions (l x w x h) approx.:** 1,200 x 800 x 1,200 mm, **weight approx.:** 100 kg



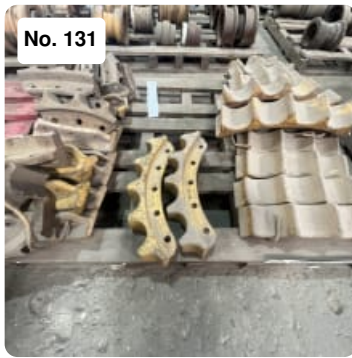
■ D6 (28D) Aro Sprocket

**Item number:** 758386, **Model / Type:** D6 (28D) , **Item available from:** Immediately, **Item condition:** unchecked, **Delivery terms:** FCA, loaded on truck, **Payment terms:** 100% payment prior to collection, **dimensions (l x w x h) approx.:** 1,200 x 800 x 1,200 mm, **weight approx.:** 50 kg



■ D355(27) Lot of 36 Segments

**Item number:** 758379, **Model / Type:** D355(27) , **Item available from:** Immediately, **Item condition:** unchecked, **Delivery terms:** FCA, loaded on truck, **Payment terms:** 100% payment prior to collection, **dimensions (l x w x h) approx.:** 1,200 x 800 x 1,200 mm, **weight approx.:** 300 kg



■ **Lot of 38 Sprocket**

Sprocket x 8 (I-TRAC)  
 Sprocket x 16 (CAT)  
 Sprocket x 6 (I-TRAC)  
 Sprocket x 8

**Item number:** 758381, **Item available from:** Immediately, **Item condition:** unchecked,  
**Delivery terms:** FCA, loaded on truck, **Payment terms:** 100% payment prior to collection,  
**dimensions (l x w x h) approx.:** 1,200 x 800 x 1,200 mm, **weight approx.:** 250 kg



■ **22" -5/8-215/225 Lot of 78 Pach**

**Item number:** 758378, **Model / Type:** 22" -5/8-215/225, **Item available from:** Immediately,  
**Item condition:** unchecked, **Delivery terms:** FCA, loaded on truck, **Payment terms:** 100%  
 payment prior to collection, **dimensions (l x w x h) approx.:** 1,200 x 800 x 1,200 mm,  
**weight approx.:** 400 kg