

Auction Catalogue

Closure of a warehouse for plant components

Viewing by appointment only!

Polinya, Barcelona

Spain

66 lots

Bidding ends:

Tuesday, 07/02/2023, 11:00(local time)

Bids are welcome immediately and can be placed at:

Contact:

Carlos Martinez

+34 936 393 895

carlos.martinez@surplex.com

www.surplex.com

Viewing:

Viewing by appointment only!

Polinya, Barcelona

Spain

Description:

Closure of a warehouse for plant components

Well-maintained items, including e.g.:

- BT Reach Truck

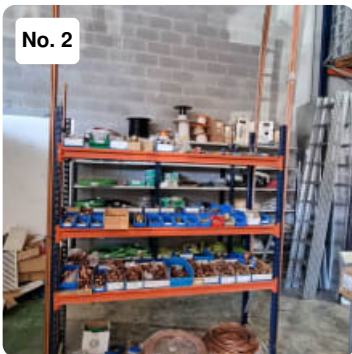
and much more



■ Lot of cables

Lot of cables
Different models, brands and diameters
Shelves NOT included
See photos for more information

Item number: 795998, **Item available from:** immediately, **Item condition:** unchecked,
Delivery terms: FCA Polinya, loaded on truck, **Payment terms:** 100% payment prior to collection, **dimensions (l x w x h) approx.:** 3,600 x 400 x 2,800 mm, **weight approx.:** 500 kg



■ Lot of copper accesories

Lot of copper accesories
Different accesories
Shelves included
See photos for more information

Item number: 796006, **Item available from:** immediately, **Item condition:** unchecked,
Delivery terms: FCA Polinya, loaded on truck, **Payment terms:** 100% payment prior to collection, **dimensions (l x w x h) approx.:** 1,900 x 600 x 1,200 mm, **weight approx.:** 250 kg



■ Lot of brass accesories

Lot of brass accesories
Different models
Shelves NOT included
See photos for more information

Item number: 796009, **Item available from:** immediately, **Item condition:** unchecked,
Delivery terms: FCA Polinya, loaded on truck, **Payment terms:** 100% payment prior to collection, **dimensions (l x w x h) approx.:** 1,900 x 600 x 1,200 mm, **weight approx.:** 100 kg



■ Lot of hardware store

Lot of hardware store
Different accesories
See photos for more information

Item number: 796008, **Item available from:** immediately, **Item condition:** unchecked,
Delivery terms: FCA Polinya, loaded on truck, **Payment terms:** 100% payment prior to collection, **dimensions (l x w x h) approx.:** 4,000 x 900 x 400 mm, **weight approx.:** 250 kg



■ Lot of electricity components

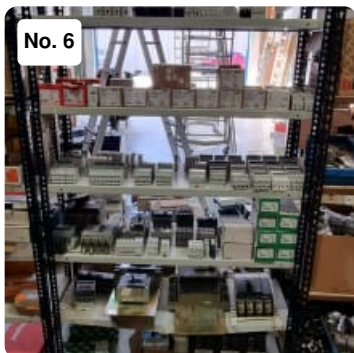
Lot of electricity components

Bticino, Simon, Legrand, Obo Bettermann, Hager, Schneider, Quintela plugs, switches, sockets and other accessories

Shelves NOT included

See photos for more information

Item number: 796007, **Item available from:** immediately, **Item condition:** unchecked, **Delivery terms:** FCA Polinya, loaded on truck, **Payment terms:** 100% payment prior to collection, **dimensions (l x w x h) approx.:** 1,000 x 1,000 x 2,000 mm, **weight approx.:** 200 kg



■ Lot of circuit breaker and other accesories

Lot of circuit breaker accesories

Shelves NOT included

See photos for more information

Item number: 796075, **Item available from:** immediately, **Item condition:** unchecked, **Delivery terms:** FCA Polinya, loaded on truck, **Payment terms:** 100% payment prior to collection, **dimensions (l x w x h) approx.:** 1,000 x 1,000 x 2,000 mm, **weight approx.:** 100 kg



■ Scaffolding

Scaffolding

6 sides 700 x 2000 mm

4 castors

2 supports and a pallet

Item number: 796012, **Item available from:** immediately, **Item condition:** unchecked, **Delivery terms:** FCA Polinya, loaded on truck, **Payment terms:** 100% payment prior to collection, **dimensions (l x w x h) approx.:** 700 x 1,000 x 2,000 mm, **weight approx.:** 70 kg



■ Scaffolding

Scaffolding

2 sides 700 x 1400 mm + 3 sides 700 x 2000 mm

4 castors

3 supports and a pallet

Item number: 796019, **Item available from:** immediately, **Item condition:** unchecked, **Delivery terms:** FCA Polinya, loaded on truck, **Payment terms:** 100% payment prior to collection, **dimensions (l x w x h) approx.:** 700 x 1,000 x 2,000 mm, **weight approx.:** 70 kg



■ Scaffolding

Scaffolding
4 sides 700 x 1700 mm
4 castors
2 supports and a pallet

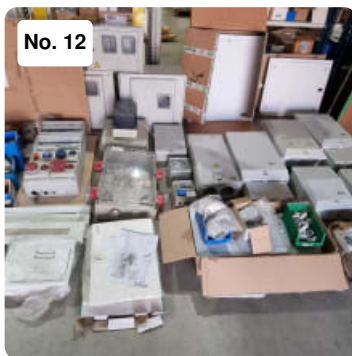
Item number: 796014, **Item available from:** immediately, **Item condition:** unchecked,
Delivery terms: FCA Polinya, loaded on truck, **Payment terms:** 100% payment prior to collection, **dimensions (l x w x h) approx.:** 700 x 1,000 x 2,000 mm, **weight approx.:** 70 kg



■ Lot of alu tubes

Lot of alu tubes
See photos for more information

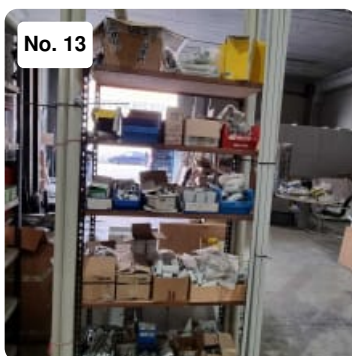
Item number: 796069, **Item available from:** immediately, **Item condition:** unchecked,
Delivery terms: FCA Polinya, loaded on truck, **Payment terms:** 100% payment prior to collection, **dimensions (l x w x h) approx.:** 2,400 x 1,400 x 1,700 mm, **weight approx.:** 120 kg



■ Lot of lighting-gas accesories

Lot of lighting-gas accesories
Different accesories
See photos for more information

Item number: 796011, **Item available from:** immediately, **Item condition:** unchecked,
Delivery terms: FCA Polinya, loaded on truck, **Payment terms:** 100% payment prior to collection, **dimensions (l x w x h) approx.:** 2,000 x 3,000 x 700 mm, **weight approx.:** 200 kg



■ Lot of PVC accesories

Lot of PVC accesories
Different accesories
Shelves included
See photos for more information

Item number: 796017, **Item available from:** immediately, **Item condition:** unchecked,
Delivery terms: FCA Polinya, loaded on truck, **Payment terms:** 100% payment prior to collection, **dimensions (l x w x h) approx.:** 1,200 x 700 x 3,000 mm, **weight approx.:** 100 kg



■ Lot of fire protection accessories

Lot of fire protection accessories
Different accessories
See photos for more information

Item number: 796015, **Item available from:** immediately, **Item condition:** unchecked,
Delivery terms: FCA Polinya, loaded on truck, **Payment terms:** 100% payment prior to collection, **dimensions (l x w x h) approx.:** 3,000 x 1,000 x 700 mm, **weight approx.:** 150 kg



■ Lot of electricity boxes

Lot of electricity boxes
Different accessories
See photos for more information

Item number: 796073, **Item available from:** immediately, **Item condition:** unchecked,
Delivery terms: FCA Polinya, loaded on truck, **Payment terms:** 100% payment prior to collection, **dimensions (l x w x h) approx.:** 2,000 x 1,000 x 700 mm, **weight approx.:** 70 kg



■ Lot of 2 suction hood PANDO

Lot of 2 suction hood PANDO

Item number: 796060, **Manufacturer:** PANDO, **Model / Type:** P-823/60.18, **Year of manufacture:** 2021, **Item available from:** immediately, **Item condition:** unchecked,
Delivery terms: FCA Polinya, loaded on truck, **Payment terms:** 100% payment prior to collection, **dimensions (l x w x h) approx.:** 470 x 770 x 1,250 mm, **weight approx.:** 50 kg



■ BT RR B2 Electric forklift

Electrical forklift
Serial number 713949
Operating hours 4947 h
Lifting height: 7,500 mm
Maximum load capacity: 1,600 kgs
Blades: width 100 x 1200 mm
Charger: 48V. 100A
Battery: 48V. 600Ah

Item number: 796066, **Manufacturer:** BT, **Model / Type:** RR B2, **Year of manufacture:** 2004, **Item available from:** immediately, **Item condition:** unchecked, **Delivery terms:** FCA Polinya, loaded on truck, **Payment terms:** 100% payment prior to collection, **dimensions (l x w x h) approx.:** 1,500 x 2,200 x 3,200 mm, **weight approx.:** 3,500 kg



■ Tube bending machine

Tube bending machine

Item number: 796013, **Manufacturer:** OMF, **Model / Type:** Fulcro PMI 25.5/1, **Year of manufacture:** 2015, **Item available from:** immediately, **Item condition:** unchecked, **Delivery terms:** FCA Polinya, loaded on truck, **Payment terms:** 100% payment prior to collection, **dimensions (l x w x h) approx.:** 750 x 750 x 750 mm, **weight approx.:** 80 kg



■ Lot of electrical accesories

Lot of electrical accesories

Different accesories

Shelves included

See photos for more information

Item number: 796016, **Item available from:** immediately, **Item condition:** unchecked, **Delivery terms:** FCA Polinya, loaded on truck, **Payment terms:** 100% payment prior to collection, **dimensions (l x w x h) approx.:** 1,000 x 1,000 x 2,000 mm, **weight approx.:** 250 kg



■ Lot of domestic appliances

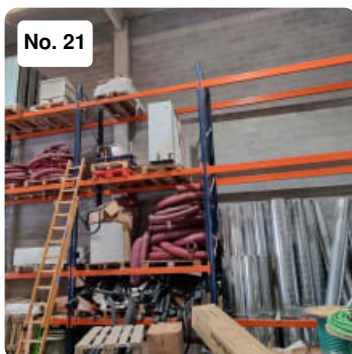
Lot of domestic appliances

Extractor hood PANDO P-823/18 year 2021

Ceramic hob BALAY 3EB967FR

Gas boiler type B11BS

Item number: 796010, **Item available from:** immediately, **Item condition:** unchecked, **Delivery terms:** FCA Polinya, loaded on truck, **Payment terms:** 100% payment prior to collection, **dimensions (l x w x h) approx.:** 1,100 x 700 x 900 mm, **weight approx.:** 100 kg



■ MECALUX Pallet rack w/o content

MECALUX Pallet rack w/o content

5 frames of 120 x 1100 x 6000 mm

24 beams of 100 x 2700 mm

Item number: 796065, **Manufacturer:** MECALUX, **Item available from:** immediately, **Item condition:** unchecked, **Delivery terms:** FCA Polinya, loaded on truck, **Payment terms:** 100% payment prior to collection, **dimensions (l x w x h) approx.:** 8,000 x 1,100 x 6,000 mm, **weight approx.:** 600 kg

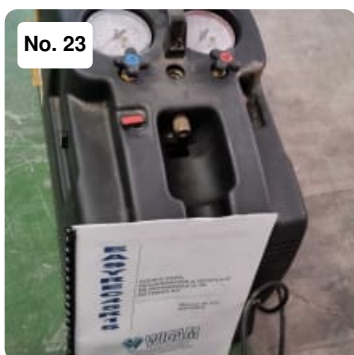


■ **Lot of bathroom accessories**

Bathroom sanitaryware set consisting of:

- 5 washbasins (ROCA, Ideal Standard)
- 2 TOILETS
- 1 TEKA sink
- 3 WC covers (ROCA Meridian, Victoria)
- 22 covers ROCA Hall
- Other accessories ROCA, NOFER

Item number: 796024, **Item available from:** immediately, **Item condition:** unchecked,
Delivery terms: FCA Polinya, loaded on truck, **Payment terms:** 100% payment prior to collection, **dimensions (l x w x h) approx.:** 3,300 x 1,700 x 800 mm, **weight approx.:** 200 kg



■ **WIGAM Easyrec 45R15 Air conditioning recuperator**

WIGAM Air Conditioning Refrigerant Recovery & Recycling Equipment Model Easyrec 45R15 Refrigerant CFC-HCFC-HFC

Item number: 796063, **Manufacturer:** WIGAM, **Model / Type:** Easyrec 45R15, **Item available from:** immediately, **Item condition:** unchecked, **Delivery terms:** FCA Polinya, loaded on truck, **Payment terms:** 100% payment prior to collection, **dimensions (l x w x h) approx.:** 500 x 300 x 350 mm, **weight approx.:** 18 kg



■ **PANDO Lot of 2 suction devices**

Lot of 2 suction devices

Item number: 796028, **Manufacturer:** PANDO, **Model / Type:** P-823/60.18, **Year of manufacture:** 2021, **Item available from:** immediately, **Item condition:** unchecked, **Delivery terms:** FCA Polinya, loaded on truck, **Payment terms:** 100% payment prior to collection, **dimensions (l x w x h) approx.:** 470 x 770 x 1,250 mm, **weight approx.:** 30 kg

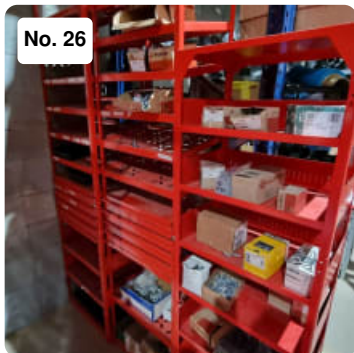


■ **Lot of PVC accessories**

4 shelves of 1000 x 500 x 2000 mm + 12 shelves of 800 x 400 x 1780 mm with PVC accessories.

See photos for more information

Item number: 796052, **Item available from:** immediately, **Item condition:** unchecked, **Delivery terms:** FCA Polinya, loaded on truck, **Payment terms:** 100% payment prior to collection, **dimensions (l x w x h) approx.:** 2,000 x 3,000 x 2,000 mm, **weight approx.:** 250 kg



■ Lot of hardware tools

Lot of 18 WÜRTH shelves 540 x 340 x 1600 mm with hardware accessories
See photos for more information

Item number: 796020, **Item available from:** immediately, **Item condition:** unchecked,
Delivery terms: FCA Polinya, loaded on truck, **Payment terms:** 100% payment prior to collection, **dimensions (l x w x h) approx.:** 2,200 x 1,800 x 1,600 mm, **weight approx.:** 200 kg



■ Lot of Galva accesories

Lot of Galva accesories

Item number: 796043, **Item available from:** immediately, **Item condition:** unchecked,
Delivery terms: FCA Polinya, loaded on truck, **Payment terms:** 100% payment prior to collection, **dimensions (l x w x h) approx.:** 3,600 x 2,000 x 3,000 mm, **weight approx.:** 250 kg



■ AXIS P5414-E Camera

Dome Network Camera
N° 0544-001-03
ACCC8E971E15

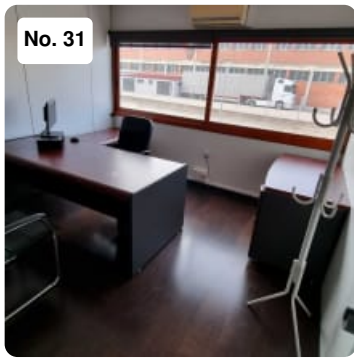
Item number: 796038, **Manufacturer:** AXIS, **Model / Type:** P5414-E, **Item available from:** immediately, **Item condition:** unchecked, **Delivery terms:** FCA Polinya, loaded on truck, **Payment terms:** 100% payment prior to collection, **dimensions (l x w x h) approx.:** 240 x 300 x 260 mm, **weight approx.:** 12 kg



■ SYM JOYMAX 125I Motorcycle

SYM JOYMAX 125I Motorcycle

Item number: 796071, **Manufacturer:** SYM, **Model / Type:** JOYMAX 125I, **Year of manufacture:** 2016, **Item available from:** immediately, **Item condition:** unchecked, **Delivery terms:** FCA Polinya, loaded on truck, **Payment terms:** 100% payment prior to collection, **dimensions (l x w x h) approx.:** 2,200 x 800 x 1,500 mm, **weight approx.:** 200 kg



No. 31

Office furniture

Office furniture consisting of:

Desk 2000 x 900 mm with side panel 1200 x 600 mm

3 chairs

Drawer units 420 x 620 x 600 mm with 2 drawers

Cupboard 1260 x 650 x 800 mm with 4 drawers and 1 door

Item number: 796025, **Item available from:** immediately, **Item condition:** unchecked,
Delivery terms: FCA Polinya, loaded on truck, **Payment terms:** 100% payment prior to collection, **dimensions (l x w x h) approx.:** 2,000 x 2,000 x 800 mm, **weight approx.:** 200 kg



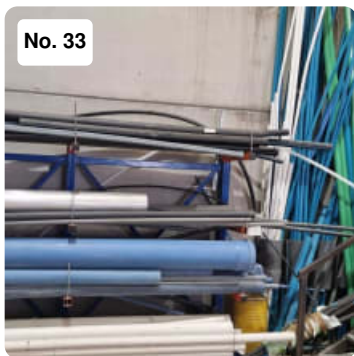
No. 32

Electrical machines

6 electrical machines

See photos for more information

Item number: 796037, **Item available from:** immediately, **Item condition:** unchecked,
Delivery terms: FCA Polinya, loaded on truck, **Payment terms:** 100% payment prior to collection, **dimensions (l x w x h) approx.:** 900 x 600 x 300 mm, **weight approx.:** 70 kg



No. 33

Cantilever rack with content

Cantilever rack with content

See photos for more information

Item number: 796029, **Item available from:** immediately, **Item condition:** unchecked,
Delivery terms: FCA Polinya, loaded on truck, **Payment terms:** 100% payment prior to collection, **dimensions (l x w x h) approx.:** 3,100 x 600 x 2,100 mm, **weight approx.:** 500 kg



No. 34

PANDO Lot of 2 suction machines

Lot of 2 suction machines

Item number: 796021, **Manufacturer:** PANDO, **Model / Type:** P-823/60.18, **Year of manufacture:** 2021, **Item available from:** immediately, **Item condition:** unchecked,
Delivery terms: FCA Polinya, loaded on truck, **Payment terms:** 100% payment prior to collection, **dimensions (l x w x h) approx.:** 470 x 770 x 1,250 mm, **weight approx.:** 30 kg



■ Lot of plumbing accessories

Lot of plumbing accessories
Different accessories
Shelves included:
6 shelves measuring 890 x 390 x 1780 mm
1 shelving 900 x 450 x 1800 mm
See photos for more information

Item number: 796027, **Item available from:** immediately, **Item condition:** unchecked,
Delivery terms: FCA Polinya, loaded on truck, **Payment terms:** 100% payment prior to collection, **dimensions (l x w x h) approx.:** 1,800 x 1,500 x 1,800 mm, **weight approx.:** 200 kg



■ Lot of benzine generator + vacuum device

Lot of benzine generator + vacuum device (hose missing)

Item number: 796070, **Item available from:** immediately, **Item condition:** unchecked,
Delivery terms: FCA Polinya, loaded on truck, **Payment terms:** 100% payment prior to collection, **dimensions (l x w x h) approx.:** 600 x 1,000 x 900 mm, **weight approx.:** 70 kg



■ WÜRTH Lot of 3 electrical machines

Set of 3 WÜRTH tools consisting of:
Saw MKS 2200 stainless steel NO. 105040360
2 gas nailers DIGA CS-1

Item number: 796048, **Manufacturer:** WÜRTH, **Item available from:** immediately, **Item condition:** unchecked, **Delivery terms:** FCA Polinya, loaded on truck, **Payment terms:** 100% payment prior to collection, **dimensions (l x w x h) approx.:** 500 x 500 x 500 mm, **weight approx.:** 70 kg



■ WÜRTH Saw

WÜRTH Tile Cutting Table
Model WMC 230
Production No. 1380-152176
Two additional replacement discs

Item number: 796026, **Manufacturer:** WÜRTH, **Model / Type:** WMC 230, **Year of manufacture:** 2007, **Item available from:** immediately, **Item condition:** unchecked,
Delivery terms: FCA Polinya, loaded on truck, **Payment terms:** 100% payment prior to collection, **weight approx.:** 80 kg, **dimensions (l x w x h) approx.:** 1,000 x 600 x 1,100 mm



■ Drum sander

Drum sander
Roller Ø 140 x 200 mm

Item number: 796023, **Item available from:** immediately, **Item condition:** unchecked,
Delivery terms: FCA Polinya, loaded on truck, **Payment terms:** 100% payment prior to collection, **dimensions (l x w x h) approx.:** 800 x 400 x 800 mm, **weight approx.:** 70 kg



■ Lot of 5 engines

Set of 5 hydraulic pumps consisting of:
AC st-21 vacuum pump
Vacuum pump ESCOFRED BE-2VV. Year 2006
Vacuum pump ROTHENBERGER P2DE/V. Year 2004
Vacuum pump TELSTAR Torricelli
Vacuum pump LEROY-SOMER LS132S30

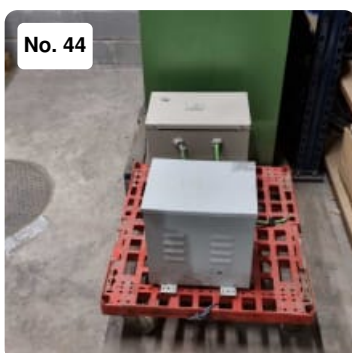
Item number: 796057, **Item available from:** immediately, **Item condition:** unchecked,
Delivery terms: FCA Polinya, loaded on truck, **Payment terms:** 100% payment prior to collection, **dimensions (l x w x h) approx.:** 750 x 750 x 500 mm, **weight approx.:** 80 kg



■ Hand pallet truck

MercaFIX manual pallet truck:
Maximum load capacity 2500 kgs.
Blade width 160 mm (total 540 mm) x 1150 mm long.
Manual strapping machine with staple box

Item number: 796047, **Item available from:** immediately, **Item condition:** unchecked,
Delivery terms: FCA Polinya, loaded on truck, **Payment terms:** 100% payment prior to collection, **dimensions (l x w x h) approx.:** 540 x 1,600 x 130 mm, **weight approx.:** 120 kg



■ Lot of 3 transformers

Lot of 3 transformers:
TRANSFAB AUTO III. Power 10 KV
Power 10 KV
MIMA VEN type AD28/3400. Power 400 KV. Year 2008

Item number: 796046, **Item available from:** immediately, **Item condition:** unchecked,
Delivery terms: FCA Polinya, loaded on truck, **Payment terms:** 100% payment prior to collection, **dimensions (l x w x h) approx.:** 2,000 x 800 x 1,200 mm, **weight approx.:** 200 kg



■ Lot of ventilation accessories

Ventilation accessories set
Various accessories including:
3 ELCO twin shaft motors. year 2017.
MundoFan extraction turbine. year 2008
Shelves included:
2 shelves of 1020 x 470 x 2000 mm.
1 rack of 920 x 470 x 2000 mm
1 shelf of 1230 x 470 x 2000 mm
See photos for more information

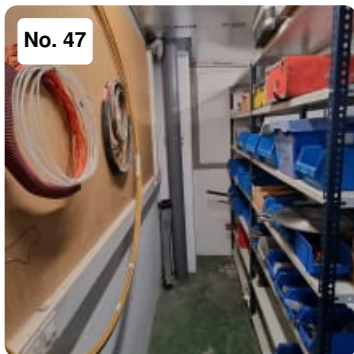
Item number: 796022, **Item available from:** immediately, **Item condition:** unchecked,
Delivery terms: FCA Polinya, loaded on truck, **Payment terms:** 100% payment prior to collection, **dimensions (l x w x h) approx.:** 1,230 x 2,000 x 2,000 mm, **weight approx.:** 150 kg



■ Lot of different accesories

Lot of different accesories
Different accesories
See photos for more information

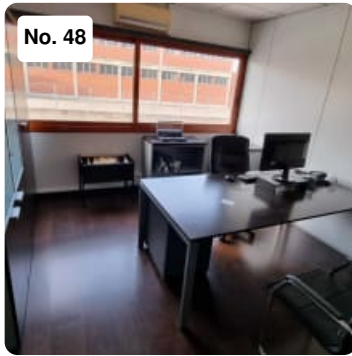
Item number: 796059, **Item available from:** immediately, **Item condition:** unchecked,
Delivery terms: FCA Polinya, loaded on truck, **Payment terms:** 100% payment prior to collection, **dimensions (l x w x h) approx.:** 800 x 600 x 400 mm, **weight approx.:** 150 kg



■ Tools

Tools
Shelves included 1200 x 400 x 2200 mm
See photos for more information

Item number: 796031, **Item available from:** immediately, **Item condition:** unchecked,
Delivery terms: FCA Polinya, loaded on truck, **Payment terms:** 100% payment prior to collection, **dimensions (l x w x h) approx.:** 1,200 x 400 x 2,200 mm, **weight approx.:** 150 kg



No. 48

Office furnitures

Office furniture consisting of:

Office table 2000 x 1000 x 720 mm

3 chairs

Drawer unit 420 x 600 x 600 mm with 3 drawers

Double cupboard 2000 x 650 x 440 x 440 x 2000 mm

2 base cupboards 800 x 430 x 82 mm

Item number: 796051, **Item available from:** immediately, **Item condition:** unchecked, **Delivery terms:** FCA Polinya, loaded on truck, **Payment terms:** 100% payment prior to collection, **dimensions (l x w x h) approx.:** 2,000 x 3,000 x 2,000 mm, **weight approx.:** 300 kg



No. 49

Electrical machines

Set of electrical machines consisting of:

HILTI TE 6-S drill

DeWALT drill

BOSCH drill

Sanding machine DREMEL

METABO jig saw

BLACK&DECKER multitool

BOSCH Sander

HIKOKI Grinder

FREUD Drill

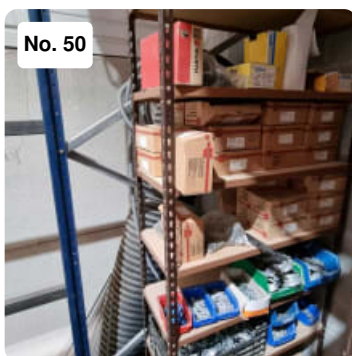
Hoover

2 STEINEL glue guns

3 Tin pencil soldering irons

See photos for more information

Item number: 796061, **Item available from:** immediately, **Item condition:** unchecked, **Delivery terms:** FCA Polinya, loaded on truck, **Payment terms:** 100% payment prior to collection, **dimensions (l x w x h) approx.:** 800 x 800 x 600 mm, **weight approx.:** 120 kg



No. 50

Lot of fixation accesories

Set of fastening components

Various accessories

Shelves included:

2 shelves of 920 x 370 x 2000

2 shelves of 1020 x 470 x 2000

2 shelves of 920 x 630 x 2000

See photos for more information

Item number: 796044, **Item available from:** immediately, **Item condition:** unchecked, **Delivery terms:** FCA Polinya, loaded on truck, **Payment terms:** 100% payment prior to collection, **dimensions (l x w x h) approx.:** 2,000 x 1,000 x 2,000 mm, **weight approx.:** 250 kg



■ Lot of different accesories

Lot of different accesories
See photos for more information

Item number: 796034, **Item available from:** immediately, **Item condition:** unchecked,
Delivery terms: FCA Polinya, loaded on truck, **Payment terms:** 100% payment prior to collection, **dimensions (l x w x h) approx.:** 2,000 x 500 x 1,000 mm, **weight approx.:** 250 kg



■ Lot of tubes

Lot of tubes
Shelves NOT included
See photos for more information

Item number: 796050, **Item available from:** immediately, **Item condition:** unchecked,
Delivery terms: FCA Polinya, loaded on truck, **Payment terms:** 100% payment prior to collection, **dimensions (l x w x h) approx.:** 4,800 x 1,600 x 500 mm, **weight approx.:** 300 kg



■ Lot of nail gun

POWERS TRAK-IT & APOLO Lot of nail gun
See photos for more information

Item number: 796042, **Item available from:** immediately, **Item condition:** unchecked,
Delivery terms: FCA Polinya, loaded on truck, **Payment terms:** 100% payment prior to collection, **dimensions (l x w x h) approx.:** 500 x 500 x 400 mm, **weight approx.:** 60 kg



■ Lot of cables

Lot of big cables
See photos for more information

Item number: 796064, **Item available from:** immediately, **Item condition:** unchecked,
Delivery terms: FCA Polinya, loaded on truck, **Payment terms:** 100% payment prior to collection, **dimensions (l x w x h) approx.:** 4,300 x 900 x 1,400 mm, **weight approx.:** 300 kg



■ Lot of electrical tools

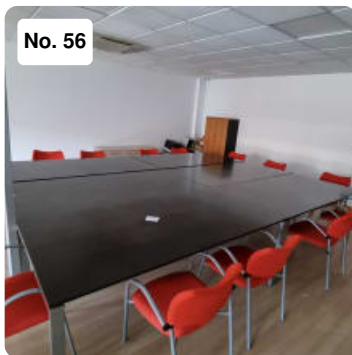
Lot of 3 electrical tools:

STARRETT St-1101 saw. Year 2005. Serial Number 051993

De WALT briefcase with electric drill and battery grinder with 2 batteries and charger.

EINHELL TK 202 saw. Serial Number 1997/00272S

Item number: 796056, **Item available from:** immediately, **Item condition:** unchecked, **Delivery terms:** FCA Polinya, loaded on truck, **Payment terms:** 100% payment prior to collection, **dimensions (l x w x h) approx.:** 700 x 900 x 400 mm, **weight approx.:** 80 kg



■ Office furniture

Office furniture consisting of:

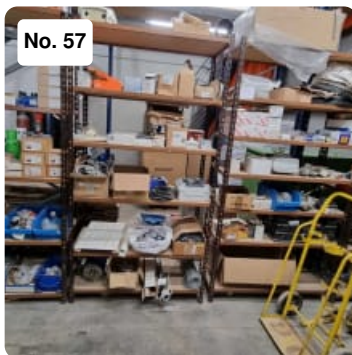
6 desks 2000 x 1000 x 720 mm

13 chairs

3 Chests of drawers 430 x 530 x 590 mm with 3 drawers

Cupboard of 790 x 420 x 1780 mm

Item number: 796074, **Item available from:** immediately, **Item condition:** unchecked, **Delivery terms:** FCA Polinya, loaded on truck, **Payment terms:** 100% payment prior to collection, **dimensions (l x w x h) approx.:** 6,000 x 3,000 x 1,000 mm, **weight approx.:** 300 kg



■ Lot of electrical, heating, gas and air conditioning accessories

Lot of electrical, heating, gas and air conditioning accessories

Shelves included:

4 shelves of 1020 x 470 x 2000 mm

See photos for more information

Item number: 796067, **Item available from:** immediately, **Item condition:** unchecked, **Delivery terms:** FCA Polinya, loaded on truck, **Payment terms:** 100% payment prior to collection, **dimensions (l x w x h) approx.:** 2,040 x 960 x 2,000 mm, **weight approx.:** 250 kg



■ WEIDMÜLLER MCP Basic Plotter

MultiCard marker and label printer

Item number: 796033, **Manufacturer:** WEIDMÜLLER, **Model / Type:** MCP Basic, **Item available from:** immediately, **Item condition:** unchecked, **Delivery terms:** FCA Polinya, loaded on truck, **Payment terms:** 100% payment prior to collection, **dimensions (l x w x h) approx.:** 510 x 500 x 300 mm, **weight approx.:** 15 kg



■ Lot of accesories

Lot of accesories
Shelves NOT included
See photos for more information

Item number: 796058, **Item available from:** immediately, **Item condition:** unchecked,
Delivery terms: FCA Polinya, loaded on truck, **Payment terms:** 100% payment prior to collection, **dimensions (l x w x h) approx.:** 5,200 x 2,900 x 3,200 mm, **weight approx.:** 300 kg



■ Cement cabinet

Cement cabinet

Item number: 796036, **Item available from:** immediately, **Item condition:** unchecked,
Delivery terms: FCA Polinya, loaded on truck, **Payment terms:** 100% payment prior to collection, **dimensions (l x w x h) approx.:** 800 x 900 x 350 mm, **weight approx.:** 300 kg



■ KYOCERA 2551ci Printer

KYOCERA TASKalfa 2551ci Multi-functional printer
Serial number LHD5332530

Item number: 796054, **Manufacturer:** KYOCERA, **Model / Type:** 2551ci, **Year of manufacture:** 2015, **Item available from:** immediately, **Item condition:** unchecked,
Delivery terms: FCA Polinya, loaded on truck, **Payment terms:** 100% payment prior to collection, **dimensions (l x w x h) approx.:** 600 x 750 x 1,200 mm, **weight approx.:** 100 kg



■ Lot of lights

Lot of lights
Shelves included:
4 Shelves of 1200 x 400 x 2200 mm
See photos for more information

Item number: 796035, **Item available from:** immediately, **Item condition:** unchecked,
Delivery terms: FCA Polinya, loaded on truck, **Payment terms:** 100% payment prior to collection, **dimensions (l x w x h) approx.:** 3,600 x 800 x 3,000 mm, **weight approx.:** 250 kg



■ Machines for spare parts

Electrical machines FOR SPARE PARTS

See photos for more information

Item number: 796039, **Item available from:** immediately, **Item condition:** unchecked,
Delivery terms: FCA Polinya, loaded on truck, **Payment terms:** 100% payment prior to collection, **dimensions (l x w x h) approx.:** 920 x 370 x 2,000 mm, **weight approx.:** 120 kg



■ STABILA LMR Laser + support

STABILA LMR Laser with STABILA H30 tripod

Item number: 796280, **Manufacturer:** STABILA, **Model / Type:** LMR, **Item available from:** immediately, **Item condition:** unchecked, **Delivery terms:** FCA Polinya, loaded on truck, **Payment terms:** 100% payment prior to collection, **dimensions (l x w x h) approx.:** 500 x 1,100 x 200 mm, **weight approx.:** 30 kg



■ ISOVER SAINT-GOBAIN Insulating material

11 Insulating material plates (fibreglass) 1180 x 3000 x 30 mm

Item number: 796040, **Manufacturer:** SAINT-GOBAIN, **Model / Type:** ISOVER, **Item available from:** immediately, **Item condition:** unchecked, **Delivery terms:** FCA Polinya, loaded on truck, **Payment terms:** 100% payment prior to collection, **dimensions (l x w x h) approx.:** 1,180 x 3,000 x 250 mm, **weight approx.:** 70 kg



■ CIRCUTOR Std12-130-230 reactive battery

Reactive battery Code R3H710000000

Serial number 3122121138 / 001

Item number: 796072, **Manufacturer:** CIRCUTOR, **Model / Type:** std12-120-230, **Item available from:** immediately, **Item condition:** unchecked, **Delivery terms:** FCA Polinya, loaded on truck, **Payment terms:** 100% payment prior to collection, **dimensions (l x w x h) approx.:** 1,180 x 1,330 x 340 mm, **weight approx.:** 100 kg



■ M.T.A. Heat pump

Heat pump
Manual 38178800108
Serial number 220014525

Item number: 796062, **Manufacturer:** M.T.A., **Model / Type:** HCY031, **Year of manufacture:** 2009, **Item available from:** immediately, **Item condition:** unchecked, **Delivery terms:** FCA Polinya, loaded on truck, **Payment terms:** 100% payment prior to collection, **dimensions (l x w x h) approx.:** 1,400 x 480 x 1,300 mm, **weight approx.:** 250 kg



■ ALFA LAVAL Plate heat exchanger

Plate heat exchanger

Item number: 796032, **Manufacturer:** ALFA LAVAL, **Item available from:** immediately, **Item condition:** unchecked, **Delivery terms:** FCA Polinya, loaded on truck, **Payment terms:** 100% payment prior to collection, **dimensions (l x w x h) approx.:** 860 x 320 x 500 mm, **weight approx.:** 120 kg



■ PHASAK PHP3118 Cabinet

2 Racks cabinet

Item number: 796053, **Manufacturer:** PHASAK, **Model / Type:** PHP3118, **Year of manufacture:** 2019, **Item available from:** immediately, **Item condition:** unchecked, **Delivery terms:** FCA Polinya, loaded on truck, **Payment terms:** 100% payment prior to collection, **dimensions (l x w x h) approx.:** 700 x 700 x 2,600 mm, **weight approx.:** 60 kg



■ LG THERMA V Air conditioning device

LG air-to-water heat pump
Serial number 701KCXM10A06

Item number: 796041, **Manufacturer:** LG, **Model / Type:** THERMA V, **Item available from:** immediately, **Item condition:** unchecked, **Delivery terms:** FCA Polinya, loaded on truck, **Payment terms:** 100% payment prior to collection, **dimensions (l x w x h) approx.:** 900 x 700 x 1,400 mm, **weight approx.:** 150 kg