

Auction Catalogue

Closure of a Metal Structures and Boilermaking Manufacturer

Viewing by appointment only!

Espiel, Córdoba
Spain

228 lots

Bidding ends:

Wednesday, 18/01/2023, 09:00(local time)

Bids are welcome immediately and can be placed at:

Contact:

Agustin Fernandez
+34 936 393 895
agustin.fernandez@surplex.com
www.surplex.com

Viewing:

Viewing by appointment only!

Espiel, Córdoba
Spain

Wednesday, **11/01/2023**, from 09:00 to 17:00

Thursday, **12/01/2023**, from 09:00 to 15:00

Description:

Closure of a Metal Structures and Boilermaking Manufacturer.

Main lots:

- HAAS VF-9/50 CNC Machining Center
- BYSTRONIC Bystar 4020 Laser Cutting Machine
- GURUTZPE SUPER-BT Center Lathe
- LOIRSAFE CHVT-123 Guillotine Shear
 - AJIAL CP_1.630 Guillotine Shear
- SCHÄFER SVRM Round Bending Machine

And others



■ SCHÄFER SVRM Round Bending Machine

Round bending machine

Serial number 4475

With 4 bending rollers:

- 2 rollers with 220 mm diameter
- 2 rollers with 180 mm diameter

Rollers length: 2050 mm

Maximum bending capacity: 2000 x 10/5

With output table of 1600 x 2260 mm

Working hours according to counter: 4443 h

380V connection

Item number: 790020, **Manufacturer:** SCHÄFER, **Model / Type:** SVRM, **Item available from:** Immediately, **Item condition:** unchecked, **Delivery terms:** FCA Espiel, loaded on truck, **Payment terms:** 100% payment prior to collection, **number of rolls:** 4, **weight approx.:** 6,500 kg, **dimensions (l x w x h) approx.:** 5,000 x 2,980 x 1,500 mm



■ LINCOLN 425 S Welding machine

Model K14062-1A

Serial number P1150305421

Usage factor at 40%: 420 A

Usage factor at 60%: 345 A

Usage factor at 100%: 265 A

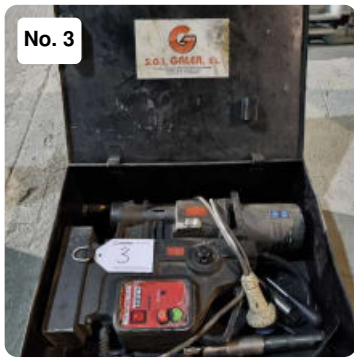
Current regulation range: 30-420 A

Three-phase connection

LINCOLN LF24M wire feeding unit

With wheels for easy transport

Item number: 787201, **Manufacturer:** LINCOLN ELECTRIC, **Model / Type:** 425 S POWERTEC + LF24M, **Item available from:** immediately, **Item condition:** unchecked, **Delivery terms:** FCA Espiel, loaded on truck, **Payment terms:** 100% payment prior to collection, **weight approx.:** 280 kg, **dimensions (l x w x h) approx.:** 700 x 1,200 x 1,400 mm



No. 3

■ S.G.I. GALEA PRO 111 Drilling Machine

Heavy-duty drilling machine
Serial number 040101711429
Power consumption 1800 W
4 working speeds: 85 - 135 - 160 - 250 Rpm
Maximum milling capacity: 111 mm diameter
Maximum drilling capacity: 47 mm diameter
Maximum countersinking capacity: 63 mm diameter
Max tap size: M30
Stroke: 230 mm
Maximum cutting depth: 76 mm
Accessories included

Item number: 790283, **Manufacturer:** S.G.I. GALEA, **Model / Type:** PRO 111, **Year of manufacture:** 2017, **Item available from:** Immediately, **Item condition:** unchecked, **Delivery terms:** FCA Espiel, loaded on truck, **Payment terms:** 100% payment prior to collection, **dimensions (l x w x h) approx.:** 700 x 600 x 400 mm, **weight approx.:** 40 kg



No. 4

■ ANFE Hydraulic Press

Manual hydraulic press
Serial number D6E59
Maximum pressing capacity: 100 T
Table measures: 1050 x 295 mm
Presser diameter: 75 mm
Vertical travel of the table: 600 mm approx.

Item number: 790286, **Manufacturer:** ANFE, **Item available from:** Immediately, **Item condition:** unchecked, **Delivery terms:** FCA Espiel, loaded on truck, **Payment terms:** 100% payment prior to collection, **Max. pressing force:** 100 to, **dimensions (l x w x h) approx.:** 1,800 x 1,100 x 2,010 mm, **weight approx.:** 500 kg, **table surface area l x w :** 1050x295 mm



No. 5

■ DEMAG Hoist

Maximum load 2000 kgs
Working length: 3700 mm
Working height: 3740 mm
Base diameter: 750 mm
Anchored to the ground with screws
Hanging control

Item number: 787203, **Manufacturer:** DEMAG, **Item available from:** immediately, **Item condition:** unchecked, **Delivery terms:** FCA Espiel, loaded on truck, **Payment terms:** 100% payment prior to collection, **dimensions (l x w x h) approx.:** 900 x 5,000 x 4,200 mm, **weight approx.:** 4,000 kg



■ NISSAN NT400 CABSTAR Truck

Registration plate: 4919 JJX

Id number: VWADVTF24F6180998

Mileage: 268.633 Km

Motor power: 100 kW

Displacement: 2488 CC

Number of seats: 6

Shift Type: Manual

Diesel

EURO 5M

MOT valid until 11 - 2022

The client is responsible for the change of ownership. Vehicle transferred with notification of sale.

Item number: 793471, **Manufacturer:** NISSAN, **Model / Type:** NT400 CABSTAR, **Year of manufacture:** 2015, **Item available from:** Immediately, **Item condition:** unchecked, **Delivery terms:** FCA Espiel, loaded on truck, **Payment terms:** 100% payment prior to collection, **dimensions (l x w x h) approx.:** 6,632 x 2,250 x 2,300 mm, **weight approx.:** 2,028 kg, **stroke displacement:** 2,488 cm³, **mileage:** 268,633 km



■ FAT 270 Metal Horizontal Band Saw

Horizontal band saw

Serial number F1303440

Cut 0°/+45°/60°

Round cutting capacity: 220 mm

Square cutting capacity: 215 mm

Rectangle cutting capacity: 250 x 170 mm

Rotating head 60°

2 speeds: 30/60 m/min

Motor power 1.1 kW

Sawblade development 2450 x 27 x 0.9 mm

Total power: 1.67 kW

Roller feeding table 1280 x 465 mm

Roller outfeed table 3100 x 465 mm

Roller diameter 110 mm

Item number: 792980, **Manufacturer:** FAT, **Model / Type:** 270, **Year of manufacture:** 1999, **Item available from:** Immediately, **Item condition:** unchecked, **Delivery terms:** FCA Espiel, loaded on truck, **Payment terms:** 100% payment prior to collection, **band dimensions:** 2450 x 27 x 0.9 mm, **total power requirement:** 1,67 kW, **weight approx.:** 700 kg, **dimensions (l x w x h) approx.:** 5,100 x 1,400 x 1,500 mm



■ LETAG Bench Grinder

Ø grinding discs: 280 mm

Item number: 787202, **Manufacturer:** LETAG, **Item available from:** immediately, **Item condition:** unchecked, **Delivery terms:** FCA Espiel, loaded on truck, **Payment terms:** 100% payment prior to collection, **dimensions (l x w x h) approx.:** 700 x 700 x 1,200 mm, **weight approx.:** 120 kg



■ SORALUCE TRO-1250 Radial Drilling Machine

Radial drill

Serial number 4457/1060

Arm length: 1250 mm

Worktable measurements: 1200 x 650 mm

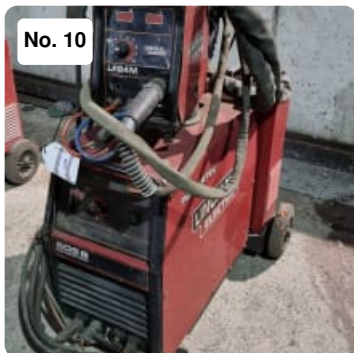
12 working speeds: 25-1440 Rpm

Spindle diameter: 80 mm

Motor power: 3 kW

Clamping jaw included

Item number: 792976, **Manufacturer:** SORALUCE, **Model / Type:** TRO-1250, **Item available from:** Immediately, **Item condition:** unchecked, **Delivery terms:** FCA Espiel, loaded on truck, **Payment terms:** 100% payment prior to collection, **weight approx.:** 2,500 kg, **dimensions (l x w x h) approx.:** 1,880 x 750 x 2,720 mm



■ LINCOLN 505 S + LF24M Welding machine

Serial number P1150304043

Usage factor at 40%: 500 A

Usage factor at 60%: 410 A

Usage factor at 100%: 315 A

Current regulation range: 40-500 A

Three-phase connection

LINCOLN LF24M wire feeding unit

With wheels for easy transport

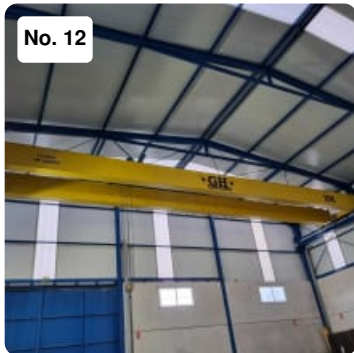
Item number: 787230, **Manufacturer:** LINCOLN ELECTRIC, **Model / Type:** 505 S POWERTEC + LF24M, **Item available from:** immediately, **Item condition:** unchecked, **Delivery terms:** FCA Espiel, loaded on truck, **Payment terms:** 100% payment prior to collection, **weight approx.:** 280 kg, **dimensions (l x w x h) approx.:** 700 x 1,100 x 1,400 mm



■ MILWAUKEE Impact Wrenches

Lot consisting of 2 impact wrenches
Wireless
Charger and extra batteries included

Item number: 792975, **Manufacturer:** MILWAUKEE, **Item available from:** Immediately, **Item condition:** unchecked, **Delivery terms:** FCA Espiel, loaded on truck, **Payment terms:** 100% payment prior to collection, **dimensions (l x w x h) approx.:** 400 x 400 x 300 mm, **weight approx.:** 10 kg



■ GH 10 Tn Overhead Crane

Serial number 102918
Maximum load capacity: 10 Tn
Useful measurement: 19500 mm
Height from the ground: 8950 mm
With pendant control
Blue rails and power line not included
Important Note:

This item will be available at the end of the upload dates.

Item number: 792974, **Manufacturer:** G&H, **Model / Type:** 10 Tn, **Year of manufacture:** 2014, **Item available from:** Immediately, **Item condition:** unchecked, **Delivery terms:** FCA Espiel, loaded on truck, **Payment terms:** 100% payment prior to collection, **serial number:** 102,918, **maximum capacity:** 10,000 kg, **dimensions (l x w x h) approx.:** 20,000 x 3,500 x 2,000 mm, **weight approx.:** 4,000 kg



■ Hand Tools

Composed by grinders, hand tools and one HILTI ST 1800 screwdriver

Item number: 792972, **Item available from:** Immediately, **Item condition:** unchecked, **Delivery terms:** FCA Espiel, loaded on truck, **Payment terms:** 100% payment prior to collection, **dimensions (l x w x h) approx.:** 1,200 x 800 x 500 mm, **weight approx.:** 80 kg



■ MERCEDES 310 CDI SPRINTER Transporter (Van)

Registration plate: 5660 HGT
 Id number: WDB9062351N492348
 Mileage: 209.847 Km
 Motor power: 70 kW
 Displacement: 2143 CC
 Number of seats: 7
 Shift Type: Manual
 Diesel
 EURO 5
 MOT valid until 11 - 2022
 Rear box size: 3500 x 2000 mm

The client is responsible for the change of ownership. Vehicle transferred with notification of sale.

Item number: 793474, **Manufacturer:** MERCEDES 310 CDI, **Model / Type:** SPRINTER, **Year of manufacture:** 2011, **Item available from:** Immediately, **Item condition:** unchecked, **Delivery terms:** FCA Espiel, loaded on truck, **Payment terms:** 100% payment prior to collection, **dimensions (l x w x h) approx.:** 6,809 x 2,090 x 2,400 mm, **weight approx.:** 2,620 kg



■ GH 10 Tn Overhead Crane

Serial number 55651
 Maximum load capacity: 10 Tn
 Useful measurement: 13800 mm
 With remote control
 Blue rails and power line not included
 Important Note:

This item will be available at the end of the upload dates.

Item number: 793469, **Manufacturer:** G&H, **Model / Type:** 10 Tn, **Year of manufacture:** 1997, **Item available from:** Immediately, **Item condition:** unchecked, **Delivery terms:** FCA Espiel, loaded on truck, **Payment terms:** 100% payment prior to collection, **serial number:** 55,651, **dimensions (l x w x h) approx.:** 14,000 x 2,500 x 2,000 mm, **weight approx.:** 4,000 kg



■ JAGUAR-20 Lifting Magnet

Maximum load capacity 2000 kg
 Working conditions: from -40 to 80° C

Item number: 790280, **Model / Type:** JAGUAR-20, **Item available from:** Immediately, **Item condition:** unchecked, **Delivery terms:** FCA Espiel, loaded on truck, **Payment terms:** 100% payment prior to collection, **dimensions (l x w x h) approx.:** 430 x 600 x 300 mm, **weight approx.:** 80 kg



■ IBARMIA A-50 Pillar or Column Drilling Machine

Column drill
Serial number 745-G
Table measurements: 430 x 430 mm
Spindle travel: 230 mm
Vertical travel of the table: 570 mm approx.
9 working speeds: 54 - 1032 Rpm
Motor power: 3 kW
Clamping vise included

Item number: 793480, **Manufacturer:** IBARMIA, **Model / Type:** A-50, **Item available from:** Immediately, **Item condition:** unchecked, **Delivery terms:** FCA Espiel, loaded on truck, **Payment terms:** 100% payment prior to collection, **table surface area l x w :** 430 x 430 mm, **weight approx.:** 500 kg, **dimensions (l x w x h) approx.:** 1,200 x 800 x 2,520 mm



■ SELCO Genesis 503 PME Welding machine

Serial number 007100000006
Three-phase connection
SELCO WF 104 wire feeding unit
With wheels for easy transport

Item number: 787224, **Manufacturer:** SELCO, **Model / Type:** Genesis 503 PME, **Item available from:** immediately, **Item condition:** unchecked, **Delivery terms:** FCA Espiel, loaded on truck, **Payment terms:** 100% payment prior to collection, **weight approx.:** 280 kg, **dimensions (l x w x h) approx.:** 600 x 1,100 x 1,500 mm



■ HILTI Hand Tools

Lot of 2 HILTI Screwdrivers
Models: TL 30-C and TE 40

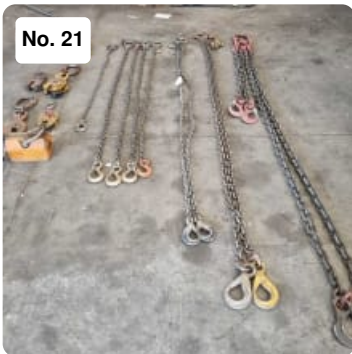
Item number: 793481, **Manufacturer:** HILTI, **Item available from:** Immediately, **Item condition:** unchecked, **Delivery terms:** FCA Espiel, loaded on truck, **Payment terms:** 100% payment prior to collection, **dimensions (l x w x h) approx.:** 400 x 400 x 300 mm, **weight approx.:** 10 kg



■ AJIAL Press Brake

Machine No. 933010001
Bending force 300 Tn
Stroke 250 mm
Max. working length 4000 mm
Gooseneck 500 mm

Item number: 787233, **Manufacturer:** AJIAL, **Year of manufacture:** 1993, **Item available from:** immediately, **Item condition:** unchecked, **Delivery terms:** FCA Espiel, loaded on truck, **Payment terms:** 100% payment prior to collection, **weight approx.:** 20,000 kg, **dimensions (l x w x h) approx.:** 4,300 x 2,300 x 3,150 mm



■ Loading Elements

Lifting and loading elements
Composed of jaws, chains and one magnet
JAGUAR-10 loading magnet with a load capacity of 1000 Kg
Chains of 1500 / 1700 / 2400 / 3000 / 3500 mm in length

Item number: 793482, **Item available from:** Immediately, **Item condition:** unchecked, **Delivery terms:** FCA Espiel, loaded on truck, **Payment terms:** 100% payment prior to collection, **dimensions (l x w x h) approx.:** 1,200 x 800 x 800 mm, **weight approx.:** 200 kg



■ GH BEASAIN 5 Tn Overhead Crane

Serial number 74627
Load capacity: 5 tons
Length: 17.150 mm
Birail
Blue rails and power line not included
Important Note:

This item will be available at the end of the upload dates.

Item number: 787210, **Manufacturer:** GH BEASAIN, **Model / Type:** 5Tn, **Year of manufacture:** 2003, **Item available from:** immediately, **Item condition:** unchecked, **Delivery terms:** FCA Espiel, loaded on truck, **Payment terms:** 100% payment prior to collection, **maximum capacity:** 5,000 kg, **dimensions (l x w x h) approx.:** 17,150 x 2,000 x 1,500 mm, **weight approx.:** 4,000 kg

No. 23



■ Hand Tools

Composed by grinders and hand tools

Item number: 793485, **Item available from:** Immediately, **Item condition:** unchecked, **Delivery terms:** FCA Espiel, loaded on truck, **Payment terms:** 100% payment prior to collection, **dimensions (l x w x h) approx.:** 1,200 x 800 x 500 mm, **weight approx.:** 80 kg

No. 25



■ LACFER CR1-1000 Centre Lathe

Plate Ø 300 mm

Distance between points 1000 mm

Bar passage: 40 mm

Tool holder and tools (see pictures) included

Item number: 787231, **Manufacturer:** LACFER, **Model / Type:** CR1-1000, **Item available from:** immediately, **Item condition:** unchecked, **Delivery terms:** FCA Espiel, loaded on truck, **Payment terms:** 100% payment prior to collection, **weight approx.:** 3,500 kg, **dimensions (l x w x h) approx.:** 2,300 x 900 x 1,400 mm

No. 26



■ KEMPPi Kempoweld 4200 + Wire 400 Welding machine

Serial number 6215424

Usage factor at 40%: 420 A

Usage factor at 60%: 325 A

Usage factor at 100%: 265 A

Current regulation range: 40-420 A

Three-phase connection

KEMPOWELD WIRE400 wire feeding unit

With wheels for easy transport

Item number: 787229, **Manufacturer:** KEMPPi, **Model / Type:** KEMPOWELD 4200 + WIRE400, **Item available from:** immediately, **Item condition:** unchecked, **Delivery terms:** FCA Espiel, loaded on truck, **Payment terms:** 100% payment prior to collection, **weight approx.:** 280 kg, **dimensions (l x w x h) approx.:** 500 x 1,000 x 1,200 mm

No. 27



■ Vacuum Cleaners

Lot of 2 industrial vacuum cleaners

Composed by:

· IMCOINSA vacuum cleaner

· IPC Cleaning vacuum cleaner, model Mirage 1215 TELE

Item number: 793490, **Item available from:** Immediately, **Item condition:** unchecked, **Delivery terms:** FCA Espiel, loaded on truck, **Payment terms:** 100% payment prior to collection, **dimensions (l x w x h) approx.:** 750 x 400 x 700 mm, **weight approx.:** 20 kg



■ METALLKRAFT KRBS 101 Grinding & Polishing Machine

Serial number 392-19-0151
Motor power: 2.5-3.3 kW
Working speed: 1400 - 2800 Rpm
Belt speed: 15 - 30 m/sec
Diameter of the piece to be sanded: 20 - 76 mm
Adjustable angle from 0 to 90°
Sanding band: 2000 x 100 mm
Connection: 400V
CE Standards

Item number: 793908, **Manufacturer:** METALLKRAFT, **Model / Type:** KRBS 101, **Year of manufacture:** 2019, **Item available from:** Immediately, **Item condition:** unchecked, **Delivery terms:** FCA Espiel, loaded on truck, **Payment terms:** 100% payment prior to collection, **dimensions (l x w x h) approx.:** 1,250 x 750 x 1,140 mm, **weight approx.:** 160 kg



■ Hand Tools

Composed by grinders, hand tools and one BOSCH heater

Item number: 792989, **Item available from:** Immediately, **Item condition:** unchecked, **Delivery terms:** FCA Espiel, loaded on truck, **Payment terms:** 100% payment prior to collection, **dimensions (l x w x h) approx.:** 1,200 x 800 x 500 mm, **weight approx.:** 80 kg



■ BYSTRONIC Bystar 4020 Laser Cutting Machine

Bystronic CO2 laser
Serial number K031016
Table measures: 4000 x 2000
X axis travel: 4000 mm
Y-axis travel: 2000 mm
Z-axis travel: 210 mm
It has 2 working tables and a Byloader 4020 manipulator.
Laser Bylaser 4000 W
Tolerance ± 0.1 mm/m
Repeatability: ± 0.5 mm
Simultaneous positioning speed of X/Y axes: 113 m/min

Working hours according to counter: 56167

Software BySoft 7

CE Standards

Item number: 792965, **Manufacturer:** BYSTRONIC, **Model / Type:** Bystar 4020, **Year of manufacture:** 2003, **Item available from:** Immediately, **Item condition:** unchecked, **Delivery terms:** FCA Espiel, loaded on truck, **Payment terms:** 100% payment prior to collection, **Read off operating hours:** 56,167 h, **table width:** 2,000 mm, **laser capacity:** 4 kW, **weight approx.:** 8,000 kg, **dimensions (l x w x h) approx.:** 16,450 x 6,730 x 2,590 mm



■ Heating Apparatus

Set of 4 heating devices

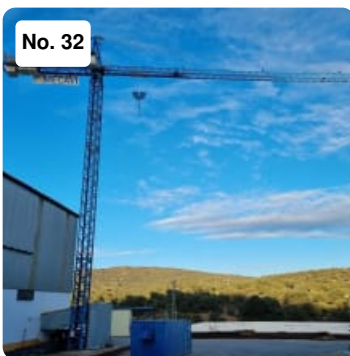
Individual measurements: 330 x 450 x 130 mm

Heating area: 180 x 130 mm

Connectors for the bottles included

BUTANE BOTTLES NOT INCLUDED!!

Item number: 793489, **Item available from:** Immediately, **Item condition:** unchecked, **Delivery terms:** FCA Espiel, loaded on truck, **Payment terms:** 100% payment prior to collection, **dimensions (l x w x h) approx.:** 600 x 800 x 800 mm, **weight approx.:** 15 kg



■ JASO J 47 NS Tower Crane

Tower crane

Model J 47 NS

Serial number 0384

Freestanding height: 38.4 m

Mounting height: 28.4 m

Overall range: 35 m

Tip load: 1950 Kg

Maximum load: 5000 Kg

With double carriage

Ground mounted crane

Item number: 793906, **Manufacturer:** JASO, **Model / Type:** J 47 NS, **Year of manufacture:** 2001, **Item available from:** Immediately, **Item condition:** unchecked, **Delivery terms:** FCA Espiel, loaded on truck, **Payment terms:** 100% payment prior to collection, **dimensions (l x w x h) approx.:** 45,000 x 38,000 x 2,500 mm, **weight approx.:** 6,000 kg

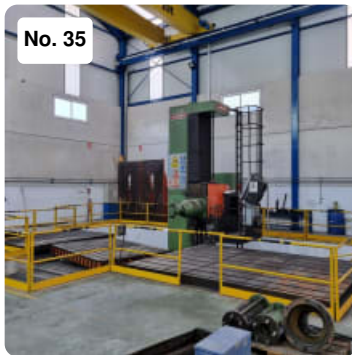


No. 34

■ CASTOLIN CastoMIG 400 DS + DS II Welding machine

Serial number 12310288
 Usage factor at 35%: 370 A
 Usage factor at 60%: 280 A
 Usage factor at 100%: 220 A
 Current regulation range: 30-370 A
 Three-phase connection
 CASTOLIN DS II wire feeding unit
 With wheels for easy transport

Item number: 787209, **Manufacturer:** CASTOLIN EUTECTIC, **Model / Type:** CastoMIG 400 DS + DS II, **Item available from:** immediately, **Item condition:** unchecked, **Delivery terms:** FCA Espiel, loaded on truck, **Payment terms:** 100% payment prior to collection, **weight approx.:** 280 kg, **dimensions (l x w x h) approx.:** 600 x 900 x 1,500 mm

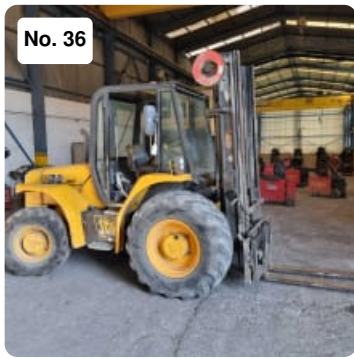


No. 35

■ JUARISTI CM 205 CNC Floor Type Boring Mill

Juaristi floor type boring machine
 Serial number 21 205M CNC 3
 Spindle diameter: 205 mm
 ISO 50 taper
 Slow Speeds: 0 - 174 Rpm
 Fast speeds: 174 - 700 mm
 X-axis travel: 8000 mm
 Longitudinal travel (table): 500 mm
 Z-axis travel: 3000 mm
 Main spindle axial travel: 1250 mm
 Work feeds: 0 - 3000 mm/min
 Feeds in X-Y-Z axes: 0 - 5000 mm/min
 Axes: 5 programmable + 1 fixed
 Boring length: 1200 mm
 With 3 work tables:
 · 3210 x 4160 mm (fixed table)
 · 3210 x 2060 mm (fixed table)
 · 3000 x 2000 mm (rotary table)
 Includes: 2 side tables of 1400 x 600 x 1000 mm and 1 side table of 1360 x 700 x 810 mm
 Maximum weight allowed on the table: 30,000 Kg
 HEIDENHAIN 355 Controller
 Tools and 2 brackets included

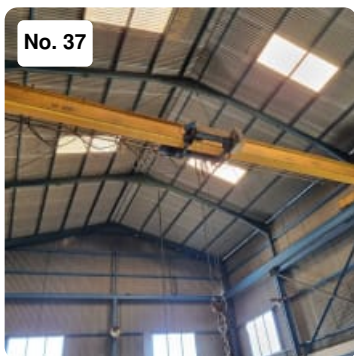
Item number: 794669, **Manufacturer:** JUARISTI, **Model / Type:** CM 205 CNC, **Year of manufacture:** 1992, **Item available from:** Immediately, **Item condition:** unchecked, **Delivery terms:** FCA Espiel, loaded on truck, **Payment terms:** 100% payment prior to collection, **z-motion:** 3,000 mm, **x-motion:** 8,000 mm, **control:** HEIDENHAIN 355, **spindle taper:** ISO 50, **feed range:** 0-3000 mm/min, **total power requirement:** 70 kW, **weight approx.:** 50,000 kg, **dimensions (l x w x h) approx.:** 12,000 x 9,000 x 5,900 mm



■ JCB 940 Diesel Forklift

Diesel forklift
Model 940
Serial number SLP940046E0825012
Rated load capacity: 4000 Kg
Maximum lifting height 5400 mm
Fork measurements: 1400 x 125 x 40 mm
Triplex mast
3 movements of the mast: side shift, elevation and tilt
Minimum passage height: 2750 mm
Diesel
Transmission Type: W
Gearbox with 4 gears
JCB motor
Motor performance: 56.7 kW
This item will be delivered at the end of the loading period!!

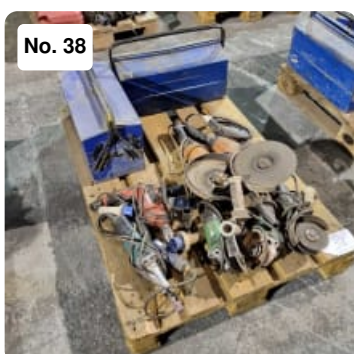
Item number: 793909, **Manufacturer:** JCB, **Model / Type:** 940, **Year of manufacture:** 2006, **Item available from:** Immediately, **Item condition:** unchecked, **Delivery terms:** FCA Espiel, loaded on truck, **Payment terms:** 100% payment prior to collection, **loading capacity:** 4,000 to, **lifting height:** 5,400 mm, **length of forks:** 1400x125 mm, **dimensions (l x w x h) approx.:** 5,200 x 2,260 x 2,750 mm, **weight approx.:** 7,800 kg



■ GH 6.3 Tn Overhead Crane

Serial number 55653
Maximum load capacity: 6.3 Tn
Useful measurement: 11.000 mm
With pendant control
Blue rails and power line not included
Important Note:
This item will be available at the end of the upload dates.

Item number: 793910, **Manufacturer:** G&H, **Model / Type:** 6.3 Tn, **Year of manufacture:** 1997, **Item available from:** Immediately, **Item condition:** unchecked, **Delivery terms:** FCA Espiel, loaded on truck, **Payment terms:** 100% payment prior to collection, **serial number:** 55,653, **maximum capacity:** 6,300 kg, **dimensions (l x w x h) approx.:** 11,500 x 2,500 x 2,000 mm, **weight approx.:** 3,000 kg



■ Hand Tools

Composed by grinders and hand tools

Item number: 792990, **Item available from:** Immediately, **Item condition:** unchecked, **Delivery terms:** FCA Espiel, loaded on truck, **Payment terms:** 100% payment prior to collection, **dimensions (l x w x h) approx.:** 1,200 x 800 x 500 mm, **weight approx.:** 80 kg



■ MERCEDES VITO 111 CDI Transporter (Van)

Registration plate: 0817 FCB

Id number: WDF63970313248934

Mileage: 441.635 Km

Motor power: 80 kW

Displacement: 2148 CC

Number of seats: 9

Shift Type: Manual

Diesel

EURO 5M

MOT valid until 01 - 2023

The client is responsible for the change of ownership. Vehicle transferred with notification of sale.

Item number: 793477, **Manufacturer:** MERCEDES, **Model / Type:** VITO 111 CDI, **Year of manufacture:** 2006, **Item available from:** Immediately, **Item condition:** unchecked, **Delivery terms:** FCA Espiel, loaded on truck, **Payment terms:** 100% payment prior to collection, **dimensions (l x w x h) approx.:** 4,993 x 1,906 x 1,903 mm, **weight approx.:** 2,225 kg



■ HURON MU66 Milling machine

Universal milling machine

Serial number 123 83

Work table measurements: 1800 x 600 mm

3-axis DRO

Clamp and accessories included

Item number: 787238, **Manufacturer:** HURON, **Model / Type:** MU66, **Item available from:** immediately, **Item condition:** unchecked, **Delivery terms:** FCA Espiel, loaded on truck, **Payment terms:** 100% payment prior to collection, **dimensions (l x w x h) approx.:** 2,000 x 3,500 x 2,000 mm, **weight approx.:** 3,500 kg



■ Sheet Metal Storage Rack

Sheet metal storage tray rack

Composed of 2 blocks of 11 trays each

Trays capacity: 3000 x 1500 x 60 mm

With wheels for easy movement

Content not included!

Item number: 793895, **Item available from:** Immediately, **Item condition:** unchecked, **Delivery terms:** FCA Espiel, loaded on truck, **Payment terms:** 100% payment prior to collection, **dimensions (l x w x h) approx.:** 7,000 x 3,200 x 3,600 mm, **weight approx.:** 2,500 kg



No. 42

SELCO Genesis 503 PME + WF 104 Welding machine

SELCO WF 104 wire feeding unit
With wheels for easy transport
Three-phase connection

Item number: 787213, **Manufacturer:** SELCO, **Model / Type:** Genesis 503 PME + WF 104, **Item available from:** immediately, **Item condition:** unchecked, **Delivery terms:** FCA Espiel, loaded on truck, **Payment terms:** 100% payment prior to collection, **weight approx.:** 280 kg, **dimensions (l x w x h) approx.:** 600 x 1,100 x 1,500 mm

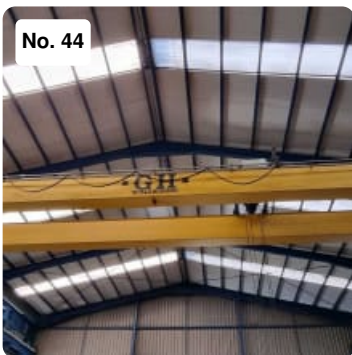


No. 43

MAKITA 9565 PCV Inner Beveling Machine

Inner beveling machine
Diameter: 125 mm
M14
Power 1400 W
Working speed max. 12000 Rpm
COFIM TUB-1810 beveling device included

Item number: 794676, **Manufacturer:** MAKITA, **Model / Type:** 9565 PCV, **Year of manufacture:** 2011, **Item available from:** Immediately, **Item condition:** unchecked, **Delivery terms:** FCA Espiel, loaded on truck, **Payment terms:** 100% payment prior to collection, **dimensions (l x w x h) approx.:** 700 x 400 x 500 mm, **weight approx.:** 40 kg



No. 44

GH BEASAIN 10 Tn Overhead Crane

Serial number 74625
Load capacity: 10 tons
Length: 17.150 mm
Birail
Blue rails and power line not included
Important Note:

This item will be available at the end of the upload dates.

Item number: 787205, **Manufacturer:** GH BEASAIN, **Model / Type:** 10Tn, **Year of manufacture:** 2003, **Item available from:** immediately, **Item condition:** unchecked, **Delivery terms:** FCA Espiel, loaded on truck, **Payment terms:** 100% payment prior to collection, **maximum capacity:** 10,000 kg, **dimensions (l x w x h) approx.:** 17,150 x 2,000 x 1,500 mm, **weight approx.:** 4,000 kg



■ Hand Tools

Composed by grinders and hand tools

Item number: 792984, **Item available from:** Immediately, **Item condition:** unchecked, **Delivery terms:** FCA Espiel, loaded on truck, **Payment terms:** 100% payment prior to collection, **dimensions (l x w x h) approx.:** 1,200 x 800 x 500 mm, **weight approx.:** 80 kg



■ Round Bending Machine

3 rollers Ø 200 mm
Roller length 2000 mm
Do not start

Item number: 787241, **Item available from:** immediately, **Item condition:** defect, **Delivery terms:** FCA Espiel, loaded on truck, **Payment terms:** 100% payment prior to collection, **number of rolls:** 3, **upper roll diameter:** 200 mm, **weight approx.:** 3,500 kg, **dimensions (l x w x h) approx.:** 4,800 x 1,200 x 1,500 mm



■ QUANTUM SAR 3.1-1000 Bending, Cutting and Folding Machine

Bending, folding and shearing machine
Serial number: 160908264
Table measurements: 1100 x 180 mm
Maximum folding length: 1100 mm
It has 3 bending rollers of 1020 mm in length
Roller diameter 50 mm
Maximum bending capacity: 2 mm
Maximum folding capacity: 1.5 mm
Maximum cutting capacity: 1 mm
Manual operated

Item number: 793898, **Manufacturer:** QUANTUM, **Model / Type:** SAR 3.1-1000, **Item available from:** Immediately, **Item condition:** unchecked, **Delivery terms:** FCA Espiel, loaded on truck, **Payment terms:** 100% payment prior to collection, **weight approx.:** 120 kg, **dimensions (l x w x h) approx.:** 1,340 x 770 x 1,180 mm



■ GURUTZPE SUPER BT Centre Lathe

Center lathe
 Serial number 27 - 4000/600
 Plate diameter: 1200 mm
 Diameter over bench: 600 mm
 Bed width: 560 mm
 Distance between points: 4000 mm
 Bar passage: 100 mm
 Motor power: 30 HP
 With steady rest

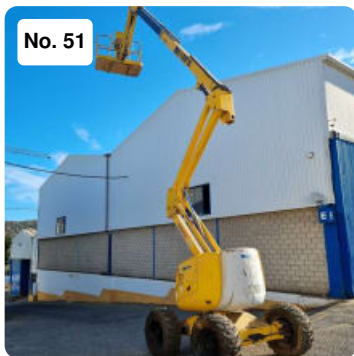
Item number: 794656, **Manufacturer:** GURUTZPE, **Model / Type:** SUPER BT, **Year of manufacture:** 1978, **Item available from:** Immediately, **Item condition:** unchecked, **Delivery terms:** FCA Espiel, loaded on truck, **Payment terms:** 100% payment prior to collection, **turning diameter over bed:** 600 mm, **spindle bore:** 100 mm, **weight approx.:** 9,000 kg, **dimensions (l x w x h) approx.:** 7,550 x 2,100 x 2,100 mm



■ CASTOLIN CastoMIG 501 DS + DS 22 Welding machine

CASTOLIN DS 22 wire feeding unit
 With wheels for easy transport
 Three-phase connection

Item number: 787240, **Manufacturer:** CASTOLIN EUTECTIC, **Model / Type:** CastoMIG 501 DS + DS 22, **Item available from:** immediately, **Item condition:** unchecked, **Delivery terms:** FCA Espiel, loaded on truck, **Payment terms:** 100% payment prior to collection, **weight approx.:** 280 kg, **dimensions (l x w x h) approx.:** 600 x 1,200 x 1,300 mm



■ HAULOTTE HA18PXNT Working Platform / Elevator (Construction)

Articulated platform
 Serial number AD107960
 Working height: 17.400 mm
 Platform height: 15.400 mm
 Max reach: 10.550 mm
 Articulation Point: 6.500 mm
 Maximum capacity 250kg
 Pendulum tilt: 140° (+70° / -70°)
 Wheelbase: 2000 mm
 Platform dimensions: 1800 x 800 mm
 Transport length: 5250 mm
 Travel speed: 1.5 to 6 km/h
 Outside turning radius: 3470 mm
 Hydraulic rotation of the turret 360° (continuous)
 Engine: Diesel DEUTZ 38 HP
 Maximum slope: 50%

Working hours according to counter: 6722 h
CE regulations

Item number: 794662, **Manufacturer:** HAULOTTE, **Model / Type:** HA18PXNT, **Year of manufacture:** 2004, **Item available from:** Immediately, **Item condition:** unchecked, **Delivery terms:** FCA Espiel, loaded on truck, **Payment terms:** 100% payment prior to collection, **dimensions (l x w x h) approx.:** 7,600 x 2,380 x 2,200 mm, **weight approx.:** 8,100 kg

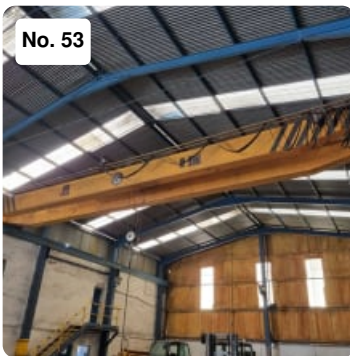


No. 52

■ Hand Tools

Composed by grinders and hand tools

Item number: 792987, **Item available from:** Immediately, **Item condition:** unchecked, **Delivery terms:** FCA Espiel, loaded on truck, **Payment terms:** 100% payment prior to collection, **dimensions (l x w x h) approx.:** 1,200 x 800 x 500 mm, **weight approx.:** 80 kg



No. 53

■ GH 8 Tn Overhead Crane

Serial number 46814

Maximum load capacity: 8 Tn

Useful measurement: 13.800 mm

With remote control

Blue rails and power line not included

Important Note:

This item will be available at the end of the upload dates.

Item number: 793919, **Manufacturer:** G&H, **Model / Type:** 8 Tn, **Item available from:** Immediately, **Item condition:** unchecked, **Delivery terms:** FCA Espiel, loaded on truck, **Payment terms:** 100% payment prior to collection, **maximum capacity:** 8,000 kg, **dimensions (l x w x h) approx.:** 14,000 x 2,500 x 2,000 mm, **weight approx.:** 6,000 kg



No. 55

■ LOIRE SAFE CHVT-123 Shear

Serial no. 15796

Force 510 kN

Max. cutting length 3050 mm

Maximum cutting thickness 12 mm

Item number: 787228, **Manufacturer:** LOIRE SAFE, **Model / Type:** CHVT-123, **Year of manufacture:** 2006, **Item available from:** immediately, **Item condition:** unchecked, **Delivery terms:** FCA Espiel, loaded on truck, **Payment terms:** 100% payment prior to collection, **weight approx.:** 7,000 kg, **dimensions (l x w x h) approx.:** 4,100 x 2,900 x 2,300 mm



■ CMC 5 Edging machine

Edging machine
Shafts Length: 100mm
Shaft diameter: 20mm
Support bench included

Item number: 794659, **Manufacturer:** CMC, **Model / Type:** 5, **Item available from:** Immediately, **Item condition:** unchecked, **Delivery terms:** FCA Espiel, loaded on truck, **Payment terms:** 100% payment prior to collection, **dimensions (l x w x h) approx.:** 450 x 510 x 1,320 mm, **weight approx.:** 80 kg



■ Hand Tools

Composed by grinders and hand tools

Item number: 792991, **Item available from:** Immediately, **Item condition:** unchecked, **Delivery terms:** FCA Espiel, loaded on truck, **Payment terms:** 100% payment prior to collection, **dimensions (l x w x h) approx.:** 1,200 x 800 x 500 mm, **weight approx.:** 80 kg



■ LINCOLN 505 S POWERTEC + LF24M Welding machine

Serial number P1150304046
Usage factor at 40%: 500 A
Usage factor at 60%: 410 A
Usage factor at 100%: 315 A
Current regulation range: 40-500 A
Three-phase connection
LINCOLN LF24M wire feeding unit
With wheels for easy transport

Item number: 787204, **Manufacturer:** LINCOLN ELECTRIC, **Model / Type:** 505 S POWERTEC + LF24M, **Item available from:** immediately, **Item condition:** unchecked, **Delivery terms:** FCA Espiel, loaded on truck, **Payment terms:** 100% payment prior to collection, **weight approx.:** 280 kg, **dimensions (l x w x h) approx.:** 700 x 1,200 x 1,400 mm



No. 59

■ CMC 5 Edging machine

Edging machine

Shafts Length: 100mm

Shaft diameter: 20mm

Support bench and working tools included

Item number: 794658, **Manufacturer:** CMC, **Model / Type:** 5, **Item available from:**

Immediately, **Item condition:** unchecked, **Delivery terms:** FCA Espiel, loaded on truck,

Payment terms: 100% payment prior to collection, **dimensions (l x w x h) approx.:** 800 x 570 x 1,270 mm, **weight approx.:** 80 kg



No. 61

■ MILWAUKEE Hand Tools

Lot consisting of a drill and an impact wrench.

Wireless

Batteries and chargers included

Item number: 794661, **Manufacturer:** MILWAUKEE, **Item available from:** Immediately,

Item condition: unchecked, **Delivery terms:** FCA Espiel, loaded on truck, **Payment**

terms: 100% payment prior to collection, **dimensions (l x w x h) approx.:** 450 x 400 x 400 mm, **weight approx.:** 15 kg



No. 62

■ Metal Band Saw

Band saw with a maximum cutting length of 450 mm

Band saw size: 2750 mm

Motor power: 1.3 kW

2 rail infeed conveyors:

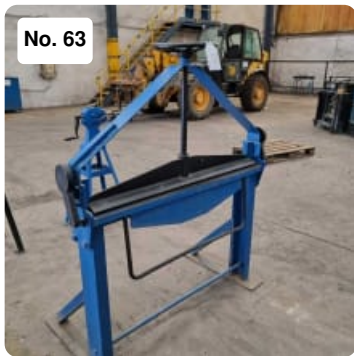
450 x 4500 x 1000 mm

450 x 2000 x 1000 mm

Item number: 787237, **Item available from:** immediately, **Item condition:** unchecked,

Delivery terms: FCA Espiel, loaded on truck, **Payment terms:** 100% payment prior to

collection, **weight approx.:** 2,000 kg, **dimensions (l x w x h) approx.:** 900 x 6,100 x 1,800 mm



No. 63

Manual Press Brake

Manual press brake
Working width: 1000 mm
Presser measurements: 1200 x 140 mm
Maximum lifting height: 80 mm
Manual override

Item number: 794660, **Item available from:** Immediately, **Item condition:** unchecked,
Delivery terms: FCA Espiel, loaded on truck, **Payment terms:** 100% payment prior to collection, **bending length:** 1,000 mm, **weight approx.:** 100 kg, **dimensions (l x w x h) approx.:** 1,300 x 710 x 1,660 mm



No. 64

Hand Tools

Composed by grinders and hand tools

Item number: 792985, **Item available from:** Immediately, **Item condition:** unchecked,
Delivery terms: FCA Espiel, loaded on truck, **Payment terms:** 100% payment prior to collection, **dimensions (l x w x h) approx.:** 1,200 x 800 x 500 mm, **weight approx.:** 80 kg



No. 65

FORTEX FTX-2000/500-D2 Centre Lathe

Serial no. 142328
Plate diameter 250 mm
max. Ø over bedplate 500 mm
max. Ø over carriage 310 mm
Max. Ø over cleavage 720 mm
Distance between points 2000 mm
Max. cutting length 1950 mm
Cone point MT7
Internal spindle diameter 80 mm
12 speeds
Speed range 36-1600 r.p.m.
Extra plate 320 mm

Item number: 787239, **Manufacturer:** FORTEX, **Model / Type:** FTX-2000/500-D2, **Year of manufacture:** 2014, **Item available from:** immediately, **Item condition:** unchecked,
Delivery terms: FCA Espiel, loaded on truck, **Payment terms:** 100% payment prior to collection, **weight approx.:** 4,000 kg, **dimensions (l x w x h) approx.:** 3,500 x 1,400 x 1,700 mm



■ CASTOLIN CastoMIG 400 DS + DS II Welding machines

Serial number 16432508 / 16281267
 Usage factor at 35%: 370 A
 Usage factor at 60%: 280 A
 Usage factor at 100%: 220 A
 Current regulation range: 30-370 A
 Three-phase connection
 CASTOLIN DS II wire feeding units
 With wheels for easy transport

Item number: 787235, **Manufacturer:** CASTOLIN EUTECTIC, **Model / Type:** CastoMIG 400 DS + DS II, **Item available from:** immediately, **Item condition:** unchecked, **Delivery terms:** FCA Espiel, loaded on truck, **Payment terms:** 100% payment prior to collection, **weight approx.:** 400 kg, **dimensions (l x w x h) approx.:** 1,000 x 1,000 x 1,300 mm



■ MECO MEC-70-340x600 DIV Keyseater

MECO keyseating machine
 Model MEC-70-340 x 600 DIV
 Serial number MC-108 / 846
 Measurement of the work table: 400 x 500 mm
 Table plate diameter: 360 mm
 TdeG auxiliary plate with 4 clamping jaws
 Auxiliary plate diameter: 230 mm
 Vertical travel: 400 mm
 Notching shaft diameter: 32 mm
 Motor power 3 kW
 CE Standards

Item number: 787226, **Manufacturer:** MECO, **Model / Type:** MEC-70-340x600 DIV, **Year of manufacture:** 2001, **Item available from:** immediately, **Item condition:** unchecked, **Delivery terms:** FCA Espiel, loaded on truck, **Payment terms:** 100% payment prior to collection, **dimensions (l x w x h) approx.:** 600 x 800 x 2,300 mm, **weight approx.:** 1,500 kg



■ HAAS VF-9/50 CNC Machining Centre

CNC machining center
 Serial number 1099012
 Work table measurements: 2130 x 915 mm
 Maximum table load: 1814 Kg
 X-axis travel: 2134 mm
 Y-axis travel: 1016 mm
 Z-axis travel: 762 mm
 Working speed: 7500 Rpm
 Cones: BT 50
 Power 22.4 kW
 Rapid feeds: 15.2 m/min

30 position tool magazine
Operating hours: 1151 h
It has a pallet with 4th and 5th axis model TR 310.
Serial number 904927
RENISHAW device for control and verification of the pieces
Chip extractor
Tools included
CE Standards

Item number: 792966, **Manufacturer:** HAAS, **Model / Type:** VF-9/50, **Year of manufacture:** 2012, **Item available from:** Immediately, **Item condition:** unchecked, **Delivery terms:** FCA Espiel, loaded on truck, **Payment terms:** 100% payment prior to collection, **z-motion:** 760 mm, **x-motion:** 2,134 mm, **y-motion:** 1,016 mm, **pallet table size:** 2130 x 915 mm, **numbers of pallets:** 1, **taper:** BT50, **toolchanger positions:** 30, **turning speed range:** 7,500 rpm, **rapid motion:** 15,2 m/min, **total power requirement:** 24 kW, **weight approx.:** 13,100 kg, **dimensions (l x w x h) approx.:** 4,700 x 4,000 x 3,900 mm, **table surface area l x w :** 2130 x 915 mm



■ Hand Tools

Composed by grinders, hand tools and one MAKITA saber saw

Item number: 792986, **Item available from:** Immediately, **Item condition:** unchecked, **Delivery terms:** FCA Espiel, loaded on truck, **Payment terms:** 100% payment prior to collection, **dimensions (l x w x h) approx.:** 1,200 x 800 x 500 mm, **weight approx.:** 80 kg



■ ABAC Screw Compressor

Screw compressor
Serial number UB 015073G
Power: 11 kW
Working pressure: 11 bar
Flow rate: 1.5 m³/min
Working hours according to counter: 15,131 h
Air tank capacity: 500 L
400 V connection
CE Standards

Item number: 793459, **Manufacturer:** ABAC, **Year of manufacture:** 2000, **Item available from:** Immediately, **Item condition:** unchecked, **Delivery terms:** FCA Espiel, loaded on truck, **Payment terms:** 100% payment prior to collection, **model:** GE 15, **dimensions (l x w x h) approx.:** 2,000 x 700 x 1,760 mm, **weight approx.:** 400 kg

No. 73



■ FISALIS FS 9/AC Refrigeration & Air Dryer

Air dryer
Serial number 130005381
Nominal flow rate: 950 l/min
Maximum air pressure: 16 bar
Ambient temperature: 1-45° C
CE Standards

Item number: 793458, **Manufacturer:** FISALIS, **Model / Type:** FS 9/AC, **Year of manufacture:** 2013, **Item available from:** Immediately, **Item condition:** unchecked, **Delivery terms:** FCA Espiel, loaded on truck, **Payment terms:** 100% payment prior to collection, **dimensions (l x w x h) approx.:** 520 x 400 x 470 mm, **weight approx.:** 50 kg

No. 75

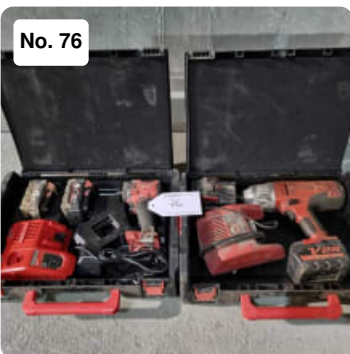


■ CASTOLIN CastoMIG 400 DS + DS II Welding Machines

Serial numbers 17503632 / 18510824
Usage factor at 35%: 370 A
Usage factor at 60%: 280 A
Usage factor at 100%: 220 A
Current regulation range: 30-370 A
Three-phase connection
CASTOLIN DS II wire feeding units
With wheels for easy transport

Item number: 787236, **Manufacturer:** CASTOLIN EUTECTIC, **Model / Type:** CastoMIG 400 DS + DS II, **Item available from:** immediately, **Item condition:** unchecked, **Delivery terms:** FCA Espiel, loaded on truck, **Payment terms:** 100% payment prior to collection, **weight approx.:** 560 kg, **dimensions (l x w x h) approx.:** 1,000 x 1,000 x 1,300 mm

No. 76

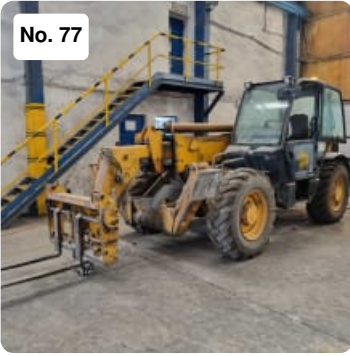


■ MILWAUKEE Hand Tools

Composed of 2 impact wrenches
Wireless
Chargers and extra batteries included

Item number: 794665, **Manufacturer:** MILWAUKEE, **Item available from:** Immediately, **Item condition:** unchecked, **Delivery terms:** FCA Espiel, loaded on truck, **Payment terms:** 100% payment prior to collection, **dimensions (l x w x h) approx.:** 500 x 500 x 400 mm, **weight approx.:** 15 kg

No. 77



■ JCB 537-135 Manipulator

JCB Telescopic Handler
Model 537-135
Serial number SLP537BA3E1037642
Maximum load capacity: 3700 Kg
Maximum lifting height: 13.500 mm
Maximum lateral reach 9.250 mm
Tilting cab
Motor power: 68.3 kW - 2800 Rpm
Wheels 15.5-25
It has forks and lifting basket
Lift basket dimensions: 2560 x 1600 x 1300mm
Remote control for the lifting basket
Fork lenght: 1060 x 100 mm
Quick clamp

Item number: 793928, **Manufacturer:** JCB, **Model / Type:** 537-135, **Year of manufacture:** 2003, **Item available from:** Immediately, **Item condition:** unchecked, **Delivery terms:** FCA Espiel, loaded on truck, **Payment terms:** 100% payment prior to collection, **weight approx.:** 10,680 kg, **dimensions (l x w x h) approx.:** 6,250 x 2,350 x 2,600 mm

No. 78



■ GH 5 Tn Overhead Crane

Serial number 102917
Maximum load capacity: 5 Tn
Useful measurement: 19500 mm
Height from the ground: 8950 mm
With pendant control
Blue rails and power line not included
Important Note:

This item will be available at the end of the upload dates.

Item number: 793457, **Manufacturer:** G&H, **Model / Type:** 5 Tn, **Year of manufacture:** 2014, **Item available from:** Immediately, **Item condition:** unchecked, **Delivery terms:** FCA Espiel, loaded on truck, **Payment terms:** 100% payment prior to collection, **serial number:** 102,917, **dimensions (l x w x h) approx.:** 20,000 x 2,500 x 2,000 mm, **weight approx.:** 3,500 kg



■ CMZ 4 Edging machine

Edging machine

Shafts Length: 85 mm

Shaft diameter: 18 mm

Includes support bench

Item number: 794657, **Manufacturer:** CMZ, **Model / Type:** 4, **Item available from:** Immediately, **Item condition:** unchecked, **Delivery terms:** FCA Espiel, loaded on truck, **Payment terms:** 100% payment prior to collection, **dimensions (l x w x h) approx.:** 530 x 530 x 1,220 mm, **weight approx.:** 60 kg



■ Hand Tools

Composed by grinders, hand tools and one BOSCH saber saw

Item number: 792988, **Item available from:** Immediately, **Item condition:** unchecked, **Delivery terms:** FCA Espiel, loaded on truck, **Payment terms:** 100% payment prior to collection, **dimensions (l x w x h) approx.:** 1,200 x 800 x 500 mm, **weight approx.:** 80 kg



■ Workbench

Workbench with tools

Tools and bench vise included

Bench with 2 drawers and 2 doors included

Item number: 794675, **Item available from:** Immediately, **Item condition:** unchecked, **Delivery terms:** FCA Espiel, loaded on truck, **Payment terms:** 100% payment prior to collection, **weight approx.:** 300 kg, **dimensions (l x w x h) approx.:** 2,660 x 1,180 x 1,270 mm



■ Raw material cylinder

Raw material cylinder

Cylinder diameter: 525mm

Cylinder length: 1020mm

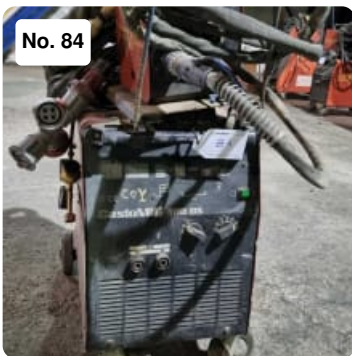
Item number: 793916, **Item available from:** Immediately, **Item condition:** unchecked, **Delivery terms:** FCA Espiel, loaded on truck, **Payment terms:** 100% payment prior to collection, **dimensions (l x w x h) approx.:** 1,200 x 800 x 900 mm, **weight approx.:** 1,720 kg



■ AYERBE Hand Pallet Truck

Hand pallet truck
Maximum load capacity: 2500 Kg
Fork measurements: 1150 x 160 mm
Loading surface: 1150 x 550 mm
Maximum lifting height: 230 mm

Item number: 793913, **Manufacturer:** AYERBE, **Item available from:** Immediately, **Item condition:** unchecked, **Delivery terms:** FCA Espiel, loaded on truck, **Payment terms:** 100% payment prior to collection, **dimensions (l x w x h) approx.:** 1,600 x 550 x 1,260 mm, **weight approx.:** 70 kg



■ CASTOLIN CastoMIG 400 DS + DS II Welding machine

Serial number 17503634
Usage factor at 35%: 370 A
Usage factor at 60%: 280 A
Usage factor at 100%: 220 A
Current regulation range: 30-370 A
Three-phase connection
CASTOLIN DS II wire feeding units
With wheels for easy transport

Item number: 787208, **Manufacturer:** CASTOLIN EUTECTIC, **Model / Type:** CastoMIG 400 DS + DS II, **Item available from:** immediately, **Item condition:** unchecked, **Delivery terms:** FCA Espiel, loaded on truck, **Payment terms:** 100% payment prior to collection, **weight approx.:** 280 kg, **dimensions (l x w x h) approx.:** 1,000 x 1,000 x 1,300 mm



■ Workbench

Workbench with loading elements
Hooks, shackles and other load-bearing elements included
Bench included

Item number: 794674, **Item available from:** Immediately, **Item condition:** unchecked, **Delivery terms:** FCA Espiel, loaded on truck, **Payment terms:** 100% payment prior to collection, **weight approx.:** 250 kg, **dimensions (l x w x h) approx.:** 1,650 x 900 x 1,200 mm

No. 86



■ MILWAUKEE Hand Tool

Lot of 3 impact wrenches
Different models and capacities

Item number: 794673, **Manufacturer:** MILWAUKEE, **Item available from:** Immediately, **Item condition:** unchecked, **Delivery terms:** FCA Espiel, loaded on truck, **Payment terms:** 100% payment prior to collection, **dimensions (l x w x h) approx.:** 450 x 450 x 400 mm, **weight approx.:** 30 kg

No. 88



■ GH BEASAIN 10 Tn Overhead Crane

Serial number 74626
Load capacity: 10 tons
Length: 17.150 mm
Birail
Remote control
Blue rails and power line not included
Important Note:

This item will be available at the end of the upload dates.

Item number: 787206, **Manufacturer:** GH BEASAIN, **Model / Type:** 10 Tn, **Year of manufacture:** 2003, **Item available from:** immediately, **Item condition:** unchecked, **Delivery terms:** FCA Espiel, loaded on truck, **Payment terms:** 100% payment prior to collection, **maximum capacity:** 10,000 kg, **dimensions (l x w x h) approx.:** 17,150 x 2,000 x 1,500 mm, **weight approx.:** 4,000 kg

No. 89



■ SODECA HTM-35-2M Turbine

Portable turbine
Serial number 150288096
Power 0.37 kW
Working speed: 2710 rpm
Blades diameter: 350 mm

Item number: 794672, **Manufacturer:** SODECA, **Model / Type:** HTM-35-2M, **Year of manufacture:** 2010, **Item available from:** Immediately, **Item condition:** unchecked, **Delivery terms:** FCA Espiel, loaded on truck, **Payment terms:** 100% payment prior to collection, **dimensions (l x w x h) approx.:** 500 x 700 x 750 mm, **weight approx.:** 20 kg

No. 90

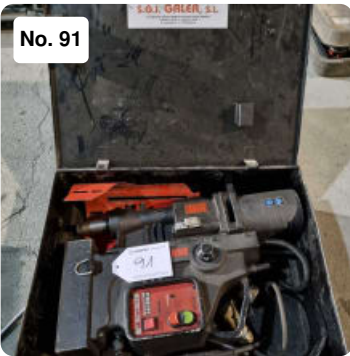


■ SUPERLEMA Bench Grinder

Bench grinder
Grinding discs diameter: 250 mm
Motor power: 0.75 kW
Working speed: 2800 rpm

Item number: 794671, **Manufacturer:** SUPERLEMA, **Item available from:** Immediately, **Item condition:** unchecked, **Delivery terms:** FCA Espiel, loaded on truck, **Payment terms:** 100% payment prior to collection, **dimensions (l x w x h) approx.:** 600 x 450 x 1,100 mm, **weight approx.:** 50 kg

No. 91



■ S.G.I. GALEA PRO 111 Other Drilling Machine (stationary)

Heavy-duty drilling machine
Power consumption 1800 W
4 working speeds: 85 - 135 - 160 - 250 Rpm
Maximum milling capacity: 111 mm diameter
Maximum drilling capacity: 47 mm diameter
Maximum countersinking capacity: 63 mm diameter
Max tap size: M30
Stroke: 230 mm
Maximum cutting depth: 76 mm
Accessories included

Item number: 794670, **Manufacturer:** S.G.I. GALEA, **Model / Type:** PRO 111, **Item available from:** Immediately, **Item condition:** unchecked, **Delivery terms:** FCA Espiel, loaded on truck, **Payment terms:** 100% payment prior to collection, **dimensions (l x w x h) approx.:** 700 x 600 x 400 mm, **weight approx.:** 40 kg

No. 92



■ SAF-FRO SAFEX C2 Welding Machines

Serial numbers 216-4843710 / 4462158 / 211-4638039 / 4462185
Usage factor at 45%: 300 A
Usage factor at 60%: 270 A
Usage factor at 100%: 230 A
Current regulation range: 20-300 A
Three-phase connection
With wheels for easy transport

Item number: 787212, **Manufacturer:** SAF-FRO, **Model / Type:** SAFEX C2, **Item available from:** immediately, **Item condition:** unchecked, **Delivery terms:** FCA Espiel, loaded on truck, **Payment terms:** 100% payment prior to collection, **weight approx.:** 1,100 kg, **dimensions (l x w x h) approx.:** 2,400 x 1,250 x 800 mm



■ CH-3 Machine Vice

Maximum opening: 235 mm
Jaw width: 200 x 50 mm

Item number: 794782, **Model / Type:** CH-3, **Item available from:** Immediately, **Item condition:** unchecked, **Delivery terms:** FCA Espiel, loaded on truck, **Payment terms:** 100% payment prior to collection, **dimensions (l x w x h) approx.:** 650 x 200 x 120 mm, **weight approx.:** 15 kg



■ Transport Trolley/Workshop Trolley

Composition:
· 1 trolley of 1220 x 600 x 1070 mm
With 2 doors and a drawer.
Bench vise and tools included
· 1 JBM tool trolley of 710 x 470 x 930 mm
With 7 drawers of 570 mm
Tools included
With wheels for easy transport

Item number: 793914, **Item available from:** Immediately, **Item condition:** unchecked, **Delivery terms:** FCA Espiel, loaded on truck, **Payment terms:** 100% payment prior to collection, **dimensions (l x w x h) approx.:** 2,160 x 770 x 1,300 mm, **weight approx.:** 250 kg



■ FARO Laser tracker

Laser tracker
Model: VANTAGE
Serial number V20003706868
Working range: from 0.1 to 35 meters
Horizontal angle range: 360°
Vertical angle range: 130°
Working temperature: -15 to 50° C
Humidity range: 0 to 95% RH
Barometric pressure range: 562 to 825 mmHg
For more details see attached pdf's

Tripod, control software, computer, calibration elements and an extra transport case included

Item number: 794781, **Manufacturer:** FARO, **Model / Type:** Vantage, **Year of manufacture:** 2017, **Item available from:** Immediately, **Item condition:** unchecked, **Delivery terms:** FCA Espiel, loaded on truck, **Payment terms:** 100% payment prior to collection, **weight approx.:** 60 kg, **dimensions (l x w x h) approx.:** 1,200 x 800 x 900 mm

No. 96



■ HILTI Rotary Hammers

Lot of 2 rotary hammers
Models: TE 30 and TE 70

Item number: 794780, **Manufacturer:** HILTI, **Item available from:** Immediately, **Item condition:** unchecked, **Delivery terms:** FCA Espiel, loaded on truck, **Payment terms:** 100% payment prior to collection, **dimensions (l x w x h) approx.:** 400 x 400 x 350 mm, **weight approx.:** 30 kg

No. 98



■ GH 10 / 5 Tn Overhead Crane

Serial number 68579
Maximum load capacity: 10 Tn / 5 Tn
Useful measurement: 12000 mm
With remote control
Blue rails and power line not included
Important Note:
This item will be available at the end of the upload dates.

Item number: 794678, **Manufacturer:** G&H, **Model / Type:** 10 / 5 Tn, **Year of manufacture:** 2001, **Item available from:** Immediately, **Item condition:** unchecked, **Delivery terms:** FCA Espiel, loaded on truck, **Payment terms:** 100% payment prior to collection, **serial number:** 68,579, **dimensions (l x w x h) approx.:** 12,500 x 3,500 x 2,500 mm, **weight approx.:** 5,000 kg

No. 100



■ SAF-FRO SAFEX C2 Welding Machines

Serial numbers 210-4606.57 / 216-4843713 / 4439933 / 210-4600347
Usage factor at 45%: 300 A
Usage factor at 60%: 270 A
Usage factor at 100%: 230 A
Current regulation range: 20-300 A
Three-phase connection
With wheels for easy transport

Item number: 787227, **Manufacturer:** SAF-FRO, **Model / Type:** SAFEX C2, **Item available from:** immediately, **Item condition:** unchecked, **Delivery terms:** FCA Espiel, loaded on truck, **Payment terms:** 100% payment prior to collection, **weight approx.:** 1,100 kg, **dimensions (l x w x h) approx.:** 2,400 x 1,250 x 800 mm



■ ATLAS COPCO G18 Screw Compressor

Screw compressor
Serial number API292851
Maximum pressure: 7.5 bar
Flow rate: 54.8 l/s
Power: 18.5 kW
Working speed: 2940 Rpm
Approximate working hours: 34,000 h
CE Standards

Item number: 793897, **Manufacturer:** ATLAS COPCO, **Model / Type:** G18, **Year of manufacture:** 2006, **Item available from:** Immediately, **Item condition:** unchecked, **Delivery terms:** FCA Espiel, loaded on truck, **Payment terms:** 100% payment prior to collection, **dimensions (l x w x h) approx.:** 1,250 x 680 x 1,450 mm, **weight approx.:** 420 kg



■ CALFER Air Vessel

Air vessel
Serial number 9314
Tank capacity: 2000 L.

Item number: 793896, **Manufacturer:** CALFER, **Year of manufacture:** 1974, **Item available from:** Immediately, **Item condition:** unchecked, **Delivery terms:** FCA Espiel, loaded on truck, **Payment terms:** 100% payment prior to collection, **dimensions (l x w x h) approx.:** 1,150 x 1,150 x 2,550 mm, **weight approx.:** 250 kg



■ Hand Tools

Composed by grinders, hand tools and one AEG heater

Item number: 792983, **Item available from:** Immediately, **Item condition:** unchecked, **Delivery terms:** FCA Espiel, loaded on truck, **Payment terms:** 100% payment prior to collection, **dimensions (l x w x h) approx.:** 1,200 x 800 x 500 mm, **weight approx.:** 80 kg



■ PG MC-660 Centre Lathe

NO. 125S A
Max. Ø over bedplate 500 mm
Distance between points 3000 mm
Plate diameter: 600 mm
Bar passage: 250 mm

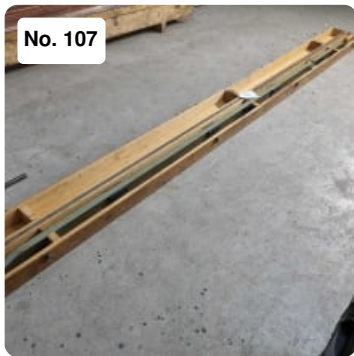
Item number: 787211, **Manufacturer:** PG, **Model / Type:** MC-660, **Item available from:** immediately, **Item condition:** unchecked, **Delivery terms:** FCA Espiel, loaded on truck, **Payment terms:** 100% payment prior to collection, **weight approx.:** 5,000 kg, **dimensions (l x w x h) approx.:** 4,700 x 1,200 x 1,800 mm



■ CST BERGER DGT-10 Electronic Digital Transit-Theodolite

Electronic digital transit-theodolite
Model: DGT-10
Angle Accuracy: 5"
Optical magnification: 30x
Length : 155 mm
Effective aperture: 45 mm
Image : Erect
Minimum Focus Distance: 1.3 m
Field of view : 1°30'
Stadimetric constant: 100
Angle measure type: Incremental
Minimum reading: 5"/10"
Illumination : Display and reticle
Magnifications : 3X
Focus range: 0.5 m. to infinity
Display : LCD (both sides)
Working temperature : From -20° to + 50°
Working voltage: 4-6 VDC
Batteries 4: AA Alkaline
Continuous operation time: 15 hours
Includes tripod and measuring ruler

Item number: 794779, **Manufacturer:** CST BERGER, **Model / Type:** DGT-10, **Item available from:** Immediately, **Item condition:** unchecked, **Delivery terms:** FCA Espiel, loaded on truck, **Payment terms:** 100% payment prior to collection, **weight approx.:** 25 kg, **dimensions (l x w x h) approx.:** 1,200 x 800 x 400 mm



■ PAV 100-3100 Test & Measurement

Measuring element
Length: 3250 mm
Profile height: 60 mm
Profile width: 30 mm
Transport box included

Item number: 794778, **Manufacturer:** PAV, **Model / Type:** 100-3100, **Item available from:** Immediately, **Item condition:** unchecked, **Delivery terms:** FCA Espiel, loaded on truck, **Payment terms:** 100% payment prior to collection, **weight approx.:** 20 kg, **dimensions (l x w x h) approx.:** 3,460 x 140 x 160 mm



■ SAF-FRO SAFEX-S2 Welding Machines

Serial numbers 215-4805213 / 215-4805215 / 210-4626616
Usage factor at 45%: 300 A
Usage factor at 60%: 270 A
Usage factor at 100%: 230 A
Current regulation range: 20-300 A
Three-phase connection
With wheels for easy transport

Item number: 787223, **Manufacturer:** SAF-FRO, **Model / Type:** SAFEX-S2, **Item available from:** immediately, **Item condition:** unchecked, **Delivery terms:** FCA Espiel, loaded on truck, **Payment terms:** 100% payment prior to collection, **weight approx.:** 810 kg, **dimensions (l x w x h) approx.:** 1,800 x 1,250 x 800 mm



■ HLTl Manual Adhesive Applicators

Lot of manual adhesive applicators
6 units
Different models and capacities

Item number: 794777, **Manufacturer:** HLTl, **Item available from:** Immediately, **Item condition:** unchecked, **Delivery terms:** FCA Espiel, loaded on truck, **Payment terms:** 100% payment prior to collection, **dimensions (l x w x h) approx.:** 600 x 400 x 600 mm, **weight approx.:** 20 kg



■ AXIAL CP_1.630 Shear

Serial No. 981630086
Maximum cutting length 3000 mm
Maximum cutting thickness 16 mm
Cutting angle: 2°
Motor power: 50 HP
Number of cuts per minute: 8-12
Distance between uprights: 3290 mm
Stop travel: 1100 mm
Gooseneck Depth: 350mm

Item number: 787232, **Manufacturer:** AXIAL, **Model / Type:** CP_1.630, **Year of manufacture:** 1998, **Item available from:** immediately, **Item condition:** unchecked, **Delivery terms:** FCA Espiel, loaded on truck, **Payment terms:** 100% payment prior to collection, **weight approx.:** 16,000 kg, **dimensions (l x w x h) approx.:** 3,770 x 2,450 x 2,000 mm



■ GH BEASAIN 3.6 Tn Overhead Crane

Serial number 59503
Load capacity: 6.3 tons
Length: 11.200 mm
Monorail
Blue rails and power line not included
Important Note:
This item will be available at the end of the upload dates.

Item number: 787242, **Manufacturer:** GH BEASAIN, **Model / Type:** 3.2 Tn, **Year of manufacture:** 1997, **Item available from:** immediately, **Item condition:** unchecked, **Delivery terms:** FCA Espiel, loaded on truck, **Payment terms:** 100% payment prior to collection, **maximum capacity:** 3200 kg, **dimensions (l x w x h) approx.:** 12,500 x 2,400 x 1,500 mm, **weight approx.:** 3,000 kg



■ Hand Tools

Composed by grinders, hand tools and one Milwaukee saber saw

Item number: 792982, **Item available from:** Immediately, **Item condition:** unchecked, **Delivery terms:** FCA Espiel, loaded on truck, **Payment terms:** 100% payment prior to collection, **dimensions (l x w x h) approx.:** 1,200 x 800 x 500 mm, **weight approx.:** 80 kg



■ JIMENEZ CALIZ HNOS Portable Fuel Tank

Portable fuel tank
Serial number JG 1577
Tank capacity: 450 L at 20°C
Material: carbon steel
It has a liter counter and a spout hose
With anchors for handling with a forklift

Item number: 794776, **Manufacturer:** JIMENEZ CALIZ HNOS, **Year of manufacture:** 2011, **Item available from:** Immediately, **Item condition:** unchecked, **Delivery terms:** FCA Espiel, loaded on truck, **Payment terms:** 100% payment prior to collection, **dimensions (l x w x h) approx.:** 1,500 x 1,050 x 1,400 mm, **weight approx.:** 120 kg



■ FORTEX TX 210M Metal Horizontal Band Saw

Serial number 890307
Motor power 0.75 kW

Item number: 794801, **Manufacturer:** FORTEX, **Model / Type:** TX 210M, **Year of manufacture:** 2008, **Item available from:** Immediately, **Item condition:** unchecked, **Delivery terms:** FCA Espiel, loaded on truck, **Payment terms:** 100% payment prior to collection, **weight approx.:** 180 kg, **dimensions (l x w x h) approx.:** 1,030 x 600 x 1,600 mm



■ SAF-FRO SAFEX C2 Welding machine

Serial numbers 211-4638023 / 211-4661410 / 210-4606855
Usage factor at 45%: 300 A
Usage factor at 60%: 270 A
Usage factor at 100%: 230 A
Current regulation range: 20-300 A
Three-phase connection
With wheels for easy transport

Item number: 787214, **Manufacturer:** SAF-FRO, **Model / Type:** SAFEX C2, **Item available from:** immediately, **Item condition:** unchecked, **Delivery terms:** FCA Espiel, loaded on truck, **Payment terms:** 100% payment prior to collection, **weight approx.:** 810 kg, **dimensions (l x w x h) approx.:** 1,800 x 1,250 x 800 mm



■ Hydraulic Press

Manual hydraulic press
Diameter of the pressing cylinder: 280 mm
Cylinder vertical travel: 305 mm
Pressing capacity approx.: 200 Tn
Table measures: 1200 x 490 mm
Spindle vertical travel: 170 mm
Vertical travel of the table: 900 mm
Presser diameter: 150 mm
With control knob

Item number: 794795, **Item available from:** Immediately, **Item condition:** unchecked,
Delivery terms: FCA Espiel, loaded on truck, **Payment terms:** 100% payment prior to collection, **dimensions (l x w x h) approx.:** 2,490 x 1,430 x 2,560 mm, **weight approx.:** 2,500 kg, **table surface area l x w :** 1200 x 490 mm



■ Hand Tools

Composed by grinders and hand tools

Item number: 793000, **Item available from:** Immediately, **Item condition:** unchecked,
Delivery terms: FCA Espiel, loaded on truck, **Payment terms:** 100% payment prior to collection, **dimensions (l x w x h) approx.:** 1,200 x 800 x 500 mm, **weight approx.:** 80 kg



■ SCANIA R164LA4X Truck

Registration: 4710 CBN
Frame number: VLUR4X20009074529
Displacement: 15600 CC
Motor power: 353 kW
Number of seats: 2
Change Type: Automatic
Diesel
Maximum load capacity: 18,000 Kg
Mileage according to counter: 870,195 km
With 2 bunk beds in the cabin
Long-range headlights on the visor

SCANIA hydraulic retarders

No batteries!

The client is responsible for the change of ownership and for passing the MOT. Vehicle transferred with notification of sale.

Item number: 794791, **Manufacturer:** SCANIA, **Model / Type:** R164LA4X, **Year of manufacture:** 2002, **Item available from:** Immediately, **Item condition:** unchecked, **Delivery terms:** FCA Espiel, loaded on truck, **Payment terms:** 100% payment prior to collection, **dimensions (l x w x h) approx.:** 5,975 x 2,550 x 3,825 mm, **weight approx.:** 8,200 kg, **stroke displacement:** 15,600 cm³, **mileage:** 870,195 km



■ JASO J52NS Tower Crane

Tower crane
Model J52NS
Serial number 0244
Freestanding height: 46 m
Mounting height: 20 m
Overall range: 32 m
Tip load: 1950 Kg
Maximum load: 5000 Kg
With double carriage
Ground mounted crane

Item number: 794789, **Manufacturer:** JASO, **Model / Type:** J52NS, **Year of manufacture:** 2002, **Item available from:** Immediately, **Item condition:** unchecked, **Delivery terms:** FCA Espiel, loaded on truck, **Payment terms:** 100% payment prior to collection, **dimensions (l x w x h) approx.:** 42,000 x 38,000 x 2,500 mm, **weight approx.:** 6,000 kg



■ DEMAG AC 155 Crane

Registration plate: E 6338 BCJ
Serial number 73213
YOM: 1996
Frame number: W09303336TzM10213
Mileage according to the counter: 54563 Km
Crane working hours according to the counter: 4289 h
Number of axes: 3
Maximum load capacity: 50 Tn
Maximum range: 40 + 17.6 meters
Number of places: 2
Diesel
Maximum authorized mass: 36,000 Kg
Power: 125 kW
Displacement: 9572 CC
Cylinders: 6
Tyres: 16.00 R25 (6)

It has counterweights
MOT valid until 02-2023
The control computer does not work!
The engine was replaced with a new one in 2020.
The client is responsible for the change of ownership. Vehicle transferred with notification of sale.
The customer is responsible for everything related to charging this equipment.

Item number: 787677, **Manufacturer:** DEMAG, **Model / Type:** AC 155, **Year of manufacture:** 1996, **Item available from:** Immediately, **Item condition:** unchecked, **Delivery terms:** FCA Espiel, loaded on truck, **Payment terms:** 100% payment prior to collection, **dimensions (l x w x h) approx.:** 11,250 x 2,600 x 3,690 mm, **weight approx.:** 35,850 kg



■ Hand Tools

Composed by grinders and hand tools

Item number: 793007, **Item available from:** Immediately, **Item condition:** unchecked, **Delivery terms:** FCA Espiel, loaded on truck, **Payment terms:** 100% payment prior to collection, **dimensions (l x w x h) approx.:** 1,200 x 800 x 500 mm, **weight approx.:** 80 kg



■ SAF-FRO SAFEX C2 Welding machine

Serial numbers 4444956 / 211-4661428

Usage factor at 45%: 300 A

Usage factor at 60%: 270 A

Usage factor at 100%: 230 A

Current regulation range: 20-300 A

Three-phase connection

With wheels for easy transport

Item number: 787218, **Manufacturer:** SAF-FRO, **Model / Type:** SAFEX C2, **Item available from:** immediately, **Item condition:** unchecked, **Delivery terms:** FCA Espiel, loaded on truck, **Payment terms:** 100% payment prior to collection, **weight approx.:** 810 kg, **dimensions (l x w x h) approx.:** 1,800 x 1,250 x 800 mm



■ Hand Pallet Trucks

Lot of 2 hand pallet trucks:

· AYERBE hand pallet truck

Fork length: 1150 x 160 mm

Load surface: 1150 x 540 mm

Maximum load capacity: 2500 Kg

Maximum lifting height: 210 mm

· Hand pallet truck

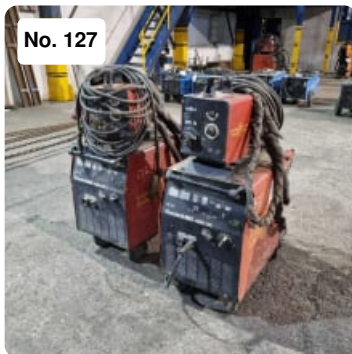
Fork length: 1140 x 160 mm

Load surface: 1140 x 550 mm

Maximum lifting height: 120 mm

Item number: 794786, **Item available from:** Immediately, **Item condition:** unchecked,

Delivery terms: FCA Espiel, loaded on truck, **Payment terms:** 100% payment prior to collection, **dimensions (l x w x h) approx.:** 1,400 x 1,600 x 1,260 mm, **weight approx.:** 120 kg



■ CASTOLIN CastoMIG 400 DS + DS II Welding Devices

Serial number 16352194 / 16432506

Usage factor at 35%: 370 A

Usage factor at 60%: 280 A

Usage factor at 100%: 220 A

Current regulation range: 30-370 A

Three-phase connection

CASTOLIN DS II wire feeding units

With wheels for easy transport

Item number: 794981, **Manufacturer:** CASTOLIN, **Model / Type:** CastoMIG 400 DS + DS

II, **Item available from:** Immediately, **Item condition:** unchecked, **Delivery terms:** FCA

Espiel, loaded on truck, **Payment terms:** 100% payment prior to collection, **weight**

approx.: 400 kg, **dimensions (l x w x h) approx.:** 1,000 x 1,000 x 1,300 mm



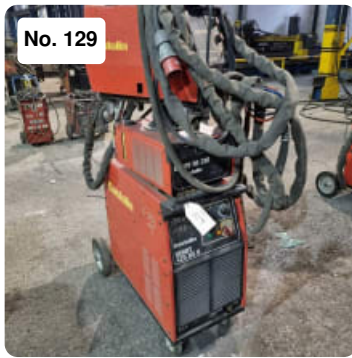
■ Hand Tools

Composed by grinders and hand tools

Item number: 792998, **Item available from:** Immediately, **Item condition:** unchecked,

Delivery terms: FCA Espiel, loaded on truck, **Payment terms:** 100% payment prior to

collection, **dimensions (l x w x h) approx.:** 1,200 x 800 x 500 mm, **weight approx.:** 80 kg



■ CASTOLIN DERBY 425 DE II + RE 230 Welding Device

Serial number H17315973
Usage factor at 40%: 400 A
Usage factor at 60%: 326 A
Usage factor at 100%: 255 A
Current regulation range: 30-400 A
Three-phase connection
CASTOLIN DERBY RE 230 wire feeding units
With wheels for easy transport

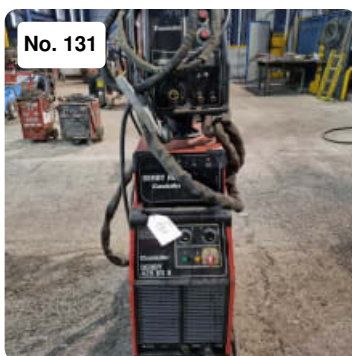
Item number: 794982, **Manufacturer:** CASTOLIN, **Model / Type:** DERBY 425 DE II + RE 230, **Item available from:** Immediately, **Item condition:** unchecked, **Delivery terms:** FCA Espiel, loaded on truck, **Payment terms:** 100% payment prior to collection, **weight approx.:** 200 kg, **dimensions (l x w x h) approx.:** 1,700 x 1,400 x 900 mm



■ SAF-FRO BUFFALO 400X Welding machine

Serial numbers 2117370739 / 2117370740
Usage factor at 35%: 400 A
Usage factor at 60%: 300 A
Usage factor at 100%: 230 A
Current regulation range: 10-400 A
Three-phase connection
With wheels for easy transport

Item number: 787215, **Manufacturer:** SAF-FRO, **Model / Type:** BUFFALO 400X, **Item available from:** immediately, **Item condition:** unchecked, **Delivery terms:** FCA Espiel, loaded on truck, **Payment terms:** 100% payment prior to collection, **weight approx.:** 540 kg, **dimensions (l x w x h) approx.:** 1,200 x 1,300 x 700 mm



■ CASTOLIN DERBY 425 DE II + RE 230 Welding Device

Serial number H17315977
Usage factor at 40%: 400 A
Usage factor at 60%: 326 A
Usage factor at 100%: 255 A
Current regulation range: 30-400 A
Three-phase connection
CASTOLIN DERBY RE 230 wire feeding units
With wheels for easy transport

Item number: 794986, **Manufacturer:** CASTOLIN, **Model / Type:** DERBY 425 DE II + RE 230, **Item available from:** Immediately, **Item condition:** unchecked, **Delivery terms:** FCA Espiel, loaded on truck, **Payment terms:** 100% payment prior to collection, **weight approx.:** 200 kg, **dimensions (l x w x h) approx.:** 1,700 x 1,400 x 900 mm



No. 132

■ HILTI DD 100 MEC Drill

Serial number 277361
Power 1700 W
Maximum diameter: 87 mm
Includes support foot for vertical drilling

Item number: 794987, **Manufacturer:** HILTI, **Model / Type:** DD 100 MEC, **Item available from:** Immediately, **Item condition:** unchecked, **Delivery terms:** FCA Espiel, loaded on truck, **Payment terms:** 100% payment prior to collection, **dimensions (l x w x h) approx.:** 500 x 400 x 400 mm, **weight approx.:** 10 kg

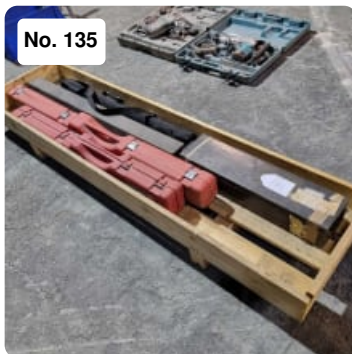


No. 134

■ MILLER BLU-PAK 45 + ST 44 Welding Device

Serial number H17315977
Usage factor at 45%: 450 A
Usage factor at 60%: 400 A
Usage factor at 100%: 310 A
Current regulation range: 10-450 A
Three-phase connection
ST 44 wire feeding units
With wheels for easy transport

Item number: 794988, **Manufacturer:** MILLER, **Model / Type:** BLU-PAK 45 + ST 44, **Item available from:** Immediately, **Item condition:** unchecked, **Delivery terms:** FCA Espiel, loaded on truck, **Payment terms:** 100% payment prior to collection, **weight approx.:** 200 kg, **dimensions (l x w x h) approx.:** 1,400 x 1,400 x 800 mm



No. 135

■ Torque Wrenches

Different models, brands and capacities
5 units

Item number: 794980, **Item available from:** Immediately, **Item condition:** unchecked, **Delivery terms:** FCA Espiel, loaded on truck, **Payment terms:** 100% payment prior to collection, **dimensions (l x w x h) approx.:** 2,120 x 540 x 360 mm, **weight approx.:** 80 kg

No. 136



■ LINCOLN LNC 405-SA Welding Machines

Serial numbers P1040401749 / P1040401750 / P1040602607 / P1040900474

Usage factor at 35%: 400 A

Usage factor at 60%: 315 A

Usage factor at 100%: 240 A

Current regulation range: 15-400 A

Three-phase connection

With wheels for easy transport

Item number: 787219, **Manufacturer:** LINCOLN ELECTRIC, **Model / Type:** LINC 405-SA,

Item available from: immediately, **Item condition:** unchecked, **Delivery terms:** FCA

Espiel, loaded on truck, **Payment terms:** 100% payment prior to collection, **weight**

approx.: 1,100 kg, **dimensions (l x w x h) approx.:** 1,500 x 1,200 x 600 mm

No. 137



■ CASTOLIN DERBY 425 DE II + RE 230 Welding Device

Serial number H17315976

Usage factor at 40%: 400 A

Usage factor at 60%: 326 A

Usage factor at 100%: 255 A

Current regulation range: 30-400 A

Three-phase connection

CASTOLIN DERBY RE 230 wire feeding units

With wheels for easy transport

Item number: 794983, **Manufacturer:** CASTOLIN, **Model / Type:** DERBY 425 DE II + RE

230, **Item available from:** Immediately, **Item condition:** unchecked, **Delivery terms:** FCA

Espiel, loaded on truck, **Payment terms:** 100% payment prior to collection, **weight**

approx.: 200 kg, **dimensions (l x w x h) approx.:** 1,700 x 1,400 x 900 mm

No. 138



■ Hand Tools

Composed by grinders and hand tools

Item number: 793006, **Item available from:** Immediately, **Item condition:** unchecked,

Delivery terms: FCA Espiel, loaded on truck, **Payment terms:** 100% payment prior to

collection, **dimensions (l x w x h) approx.:** 1,200 x 800 x 500 mm, **weight approx.:** 80 kg

No. 139



■ Loading Elements

Lot of lifting chains

Lengths: 2800 / 3000 / 3500 / 4500 mm

Item number: 794796, **Item available from:** Immediately, **Item condition:** unchecked,

Delivery terms: FCA Espiel, loaded on truck, **Payment terms:** 100% payment prior to collection, **dimensions (l x w x h) approx.:** 600 x 800 x 500 mm, **weight approx.:** 120 kg

No. 140



■ SISTECO ZEUS Metal Horizontal Band Saw

Horizontal band saw for metal

Serial number D00663

Round cutting capacity: 240 mm

Square cutting capacity: 240 x 240 mm

Rectangle cutting capacity: 270 x 240 mm

Adjustable working speed from 20 to 100 m/min

Motor power 1.1 kW

Bandsaw development 3180 x 27 x 0.9 mm

Total power: 2.4 kW

Roller output table 1500 x 360 mm

Pulley diameter: 325 mm

Item number: 794800, **Manufacturer:** SISTECO, **Model / Type:** ZEUS, **Year of**

manufacture: 2002, **Item available from:** Immediately, **Item condition:** unchecked,

Delivery terms: FCA Espiel, loaded on truck, **Payment terms:** 100% payment prior to

collection, **cutting diameter:** 240 mm, **band dimensions:** 3180 x 27 x 0'9 mm, **cutting**

range 90 degrees: flat: 270 x 240 mm, **cutting range 90 degrees: square:** 240 x 240 mm,

total power requirement: 2.4 kW, **weight approx.:** 1,050 kg, **dimensions (l x w x h)**

approx.: 1,750 x 2,200 x 1,560 mm

No. 141



■ LINCOLN ELECTRIC POWERTEC 420C PRO Welding Devices

Serial numbers P1080201407 / P1080500658

Usage factor at 40%: 420 A

Usage factor at 60%: 345 A

Usage factor at 100%: 265 A

Current regulation range: 30-420 A

Three-phase connection

With wheels for easy transport

Item number: 794989, **Manufacturer:** LINCOLN ELECTRIC, **Model / Type:** POWERTEC

420C PRO, **Item available from:** Immediately, **Item condition:** unchecked, **Delivery**

terms: FCA Espiel, loaded on truck, **Payment terms:** 100% payment prior to collection,

weight approx.: 350 kg, **dimensions (l x w x h) approx.:** 1,400 x 1,200 x 1,100 mm

No. 142



■ HILTI TE 3000-AVR Breaker

Pneumatic breaker
Serial number 034451
Power 2070 W
860 impacts/minute
Impact energy: 68 J

Item number: 794990, **Manufacturer:** HILTI, **Model / Type:** TE 3000-AVR, **Year of manufacture:** 2012, **Item available from:** Immediately, **Item condition:** unchecked, **Delivery terms:** FCA Espiel, loaded on truck, **Payment terms:** 100% payment prior to collection, **dimensions (l x w x h) approx.:** 1,000 x 800 x 500 mm, **weight approx.:** 80 kg

No. 143



■ Remote Controllers for Welding Devices

Lot of remote controllers for welding equipment
11 units
Different brands and models

Item number: 794991, **Item available from:** Immediately, **Item condition:** unchecked, **Delivery terms:** FCA Espiel, loaded on truck, **Payment terms:** 100% payment prior to collection, **dimensions (l x w x h) approx.:** 2,000 x 1,200 x 300 mm, **weight approx.:** 30 kg

No. 144



■ CEA ARCTRONIC 426 Welding Machines

Serial numbers YG104012 / YG104011
Usage factor at 35%: 400 A
Usage factor at 60%: 290 A
Usage factor at 100%: 220 A
Current regulation range: 5-400 A
Three-phase connection
With wheels for easy transport

Item number: 787222, **Manufacturer:** CEA, **Model / Type:** ARCTRONIC 426, **Item available from:** immediately, **Item condition:** unchecked, **Delivery terms:** FCA Espiel, loaded on truck, **Payment terms:** 100% payment prior to collection, **weight approx.:** 540 kg, **dimensions (l x w x h) approx.:** 1,400 x 1,300 x 700 mm

No. 145



■ GEMINIS SCNC 680 CNC Lathe

CNC Kelmi
TC2 300 chip evacuation conveyor, year 2005
Plate diameter: 400 mm
Max. Ø on bed 350 mm
Distance between points 2300 mm
Bar passage: 90 mm
Accessories included

Item number: 787234, **Manufacturer:** GEMINIS, **Model / Type:** SCNC 680, **Item available from:** immediately, **Item condition:** unchecked, **Delivery terms:** FCA Espiel, loaded on truck, **Payment terms:** 100% payment prior to collection, **spindle bore:** 90 mm, **weight approx.:** 6,000 kg, **dimensions (l x w x h) approx.:** 6,000 x 2,100 x 1,900 mm

No. 146



■ Welding Wire

Different brands, models and diameters.
See the specifications in the pictures

Item number: 794992, **Item available from:** Immediately, **Item condition:** unchecked, **Delivery terms:** FCA Espiel, loaded on truck, **Payment terms:** 100% payment prior to collection, **dimensions (l x w x h) approx.:** 1,200 x 800 x 600 mm, **weight approx.:** 150 kg

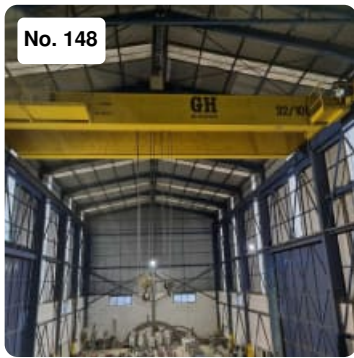
No. 147



■ LORCH S5 PULSE Welding Device (mobile)

Usage factor at 50%: 400 A
Usage factor at 60%: 350 A
Usage factor at 100%: 320 A
Current regulation range: 25-400 A
Three-phase connection
S Pulse wire feeding units
With wheels for easy transport

Item number: 795003, **Manufacturer:** LORCH, **Model / Type:** S5 PULSE, **Item available from:** Immediately, **Item condition:** unchecked, **Delivery terms:** FCA Espiel, loaded on truck, **Payment terms:** 100% payment prior to collection, **weight approx.:** 350 kg, **dimensions (l x w x h) approx.:** 1,500 x 1,500 x 1,400 mm



■ GH 32/10 Tn Overhead Crane

Serial number 67228

Maximum load capacity: 32 + 10 Tn

Useful measurement: 13.800 mm

Height from the ground: 11.500 mm

With remote control

Blue rails and power line not included

Important Note:

This item will be available at the end of the upload dates.

Item number: 794996, **Manufacturer:** G&H, **Model / Type:** 32/10 Tn, **Year of manufacture:** 2001, **Item available from:** Immediately, **Item condition:** unchecked, **Delivery terms:** FCA Espiel, loaded on truck, **Payment terms:** 100% payment prior to collection, **serial number:** 67,228 , **maximum capacity:** 32,000 kg, **dimensions (l x w x h) approx.:** 14,000 x 5,000 x 2,200 mm, **weight approx.:** 10,000 kg



■ Cordless Hand Drills

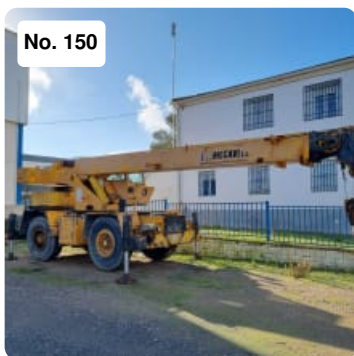
Cordless hand drills

6 units

Different models and brands

Chargers and batteries included

Item number: 794997, **Item available from:** Immediately, **Item condition:** unchecked, **Delivery terms:** FCA Espiel, loaded on truck, **Payment terms:** 100% payment prior to collection, **dimensions (l x w x h) approx.:** 800 x 600 x 400 mm, **weight approx.:** 30 kg



■ GROVE RT522 Crane

Mobile crane

Registration plate: CO-43177-VE

Model RT522

Serial number 46453

YOM: 1982

Maximum load capacity on stabilizers: 20,000 Kg at a 3 meter radius

Maximum boom length: 22 meters

Maximum length+ jib: 28 meters

Telescopic boom

Luffing jib

Engine: CUMMINS V378

Diesel

Motor power: 87 kW

Displacement: 6915 CC

Tires: 16.00 x 25 (4)

Number of seats: 1

A tire needs to be replaced

The client is responsible for the change of ownership. Vehicle transferred with notification of sale.

The customer is responsible for everything related to charging this equipment.

Item number: 794827, **Manufacturer:** GROVE, **Model / Type:** RT522, **Year of manufacture:** 1982, **Item available from:** Immediately, **Item condition:** unchecked, **Delivery terms:** FCA Espiel, loaded on truck, **Payment terms:** 100% payment prior to collection, **maximum capacity:** 20,000 kg, **dimensions (l x w x h) approx.:** 10,058 x 2,438 x 3,296 mm, **weight approx.:** 22,990 kg



■ LINCOLN LINC 400S Welding Machines

Serial numbers 0400033 / 0400034

Usage factor at 35%: 400 A

Usage factor at 60%: 315 A

Usage factor at 100%: 240 A

Current regulation range: 20-400 A

Three-phase connection

With wheels for easy transport

Item number: 787216, **Manufacturer:** LINCOLN ELECTRIC, **Model / Type:** LINC 400S, **Year of manufacture:** 1999, **Item available from:** immediately, **Item condition:** unchecked, **Delivery terms:** FCA Espiel, loaded on truck, **Payment terms:** 100% payment prior to collection, **weight approx.:** 540 kg, **dimensions (l x w x h) approx.:** 1,200 x 1,300 x 600 mm



■ Welding Devices

Composition:

· LINCOLN LINC 405-SA welding equipment

Serial number P1040401744

Usage factor at 35%: 400 A

Usage factor at 60%: 315 A

Usage factor at 100%: 240 A

Current regulation range: 15-400 A

· SOLTER welding equipment

Current regulation range: 55-300 A

Wire diameter from 1.6 to 6 mm

With wheels for easy transport

Item number: 794998, **Item available from:** Immediately, **Item condition:** unchecked, **Delivery terms:** FCA Espiel, loaded on truck, **Payment terms:** 100% payment prior to collection, **weight approx.:** 300 kg, **dimensions (l x w x h) approx.:** 1,200 x 1,200 x 1,000 mm

No. 154



■ MILWAUKEE MDE 42 Magnetic Drills

2 units

Motor power 1250 W

Working speed from 320 to 640 Rpm

Maximum capacity in forged bit: 16 mm

Maximum diameter in steel: 42 mm

Maximum locking torque: 85 Nm

Magnetic fixing force: 10,000 N

Item number: 795001, **Manufacturer:** MILWAUKEE, **Model / Type:** MDE 42, **Item available from:** Immediately, **Item condition:** unchecked, **Delivery terms:** FCA Espiel, loaded on truck, **Payment terms:** 100% payment prior to collection, **dimensions (l x w x h) approx.:** 500 x 500 x 400 mm, **weight approx.:** 40 kg

No. 155



■ NISSAN HP 16 Electric Forklift

Electric forklift

Serial number GN 01E710982

Maximum load capacity: 1600 Kg

Fork length: 1070 x 100 x 30 mm

Lifting height 5200 mm

Triplex mast

3 operations: Lift / Tilt / Sideshift

Minimum passage height: 2230 mm

Working hours according to counter: 8624

Solid wheels

48V battery

Batteries changed on 11-2018

With battery charger

Seat belt

This machine will be delivered at the end of the loading period!

Item number: 794806, **Manufacturer:** NISSAN, **Model / Type:** HP 16, **Year of manufacture:** 2002, **Item available from:** Immediately, **Item condition:** unchecked, **Delivery terms:** FCA Espiel, loaded on truck, **Payment terms:** 100% payment prior to collection, **loading capacity:** 1,600 to, **lifting height:** 5,200 mm, **battery and charger available:** Si, **dimensions (l x w x h) approx.:** 3,200 x 1,060 x 2,230 mm, **weight approx.:** 4,750 kg, **mast type:** Triplex



REMS 34700 Workbench with Content

Workbench with content
Bench measurements: 2720 x 610 x 1400
REMS 34700 grooving machine included
Content included

Item number: 794808, **Manufacturer:** REMS, **Model / Type:** 34700, **Item available from:** Immediately, **Item condition:** unchecked, **Delivery terms:** FCA Espiel, loaded on truck, **Payment terms:** 100% payment prior to collection, **dimensions (l x w x h) approx.:** 2,720 x 610 x 1,400 mm, **weight approx.:** 150 kg



CELY VC50 Industrial Scale

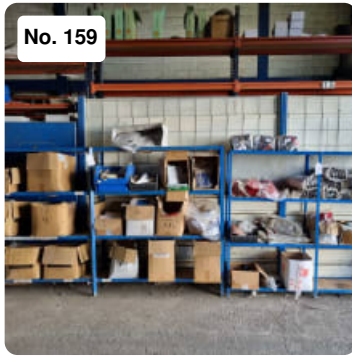
Industrial scale
Type: VC50
Serial number 41514835
Platform measurements: 1200 x 1200 mm
Maximum load capacity: 1500 Kg
Steps: 500 gr
Minimum weight: 10 kg
CE Standards

Item number: 794809, **Manufacturer:** CELY, **Model / Type:** VC50, **Year of manufacture:** 2016, **Item available from:** Immediately, **Item condition:** unchecked, **Delivery terms:** FCA Espiel, loaded on truck, **Payment terms:** 100% payment prior to collection, **dimensions (l x w x h) approx.:** 1,300 x 1,200 x 1,200 mm, **weight approx.:** 200 kg



Manual Threading Machine

Item number: 794810, **Item available from:** Immediately, **Item condition:** unchecked, **Delivery terms:** FCA Espiel, loaded on truck, **Payment terms:** 100% payment prior to collection, **dimensions (l x w x h) approx.:** 600 x 500 x 300 mm, **weight approx.:** 20 kg



No. 159

■ Racks with Contents

Racks with individual protection equipment
Includes gloves, protective overalls, boots and others
Different sizes and models
Content and racks included
Never used before

Item number: 794811, **Item available from:** Immediately, **Item condition:** unchecked,
Delivery terms: FCA Espiel, loaded on truck, **Payment terms:** 100% payment prior to collection, **dimensions (l x w x h) approx.:** 5,050 x 450 x 1,750 mm, **weight approx.:** 350 kg



No. 160

■ CEMONT YARD 400SX Welding Machines

Serial numbers 217-4881942 / 217-4881943
Usage factor at 35%: 400 A
Usage factor at 60%: 300 A
Usage factor at 100%: 230 A
Current regulation range: 10-400 A
Three-phase connection
With wheels for easy transport

Item number: 787217, **Manufacturer:** CEMONT, **Model / Type:** YARD 400SX, **Item available from:** immediately, **Item condition:** unchecked, **Delivery terms:** FCA Espiel, loaded on truck, **Payment terms:** 100% payment prior to collection, **weight approx.:** 540 kg, **dimensions (l x w x h) approx.:** 1,400 x 1,300 x 700 mm



No. 161

■ Racks with Contents

Racks with screws
Different models, materials and diameters
Content and racks included

Item number: 794812, **Item available from:** Immediately, **Item condition:** unchecked,
Delivery terms: FCA Espiel, loaded on truck, **Payment terms:** 100% payment prior to collection, **dimensions (l x w x h) approx.:** 2,000 x 630 x 1,970 mm, **weight approx.:** 900 kg



No. 162

■ GH 3.2 Tn Overhead Crane

Serial number 79148
Maximum load capacity: 3.2 Tn
Useful measurement: 14500 mm
Height from the ground: 6500 mm
With remote control
Blue rails and power line not included
Important Note:

This item will be available at the end of the upload dates.

Item number: 794813, **Manufacturer:** G&H, **Model / Type:** 3.2 Tn, **Year of manufacture:** 2005, **Item available from:** Immediately, **Item condition:** unchecked, **Delivery terms:** FCA Espiel, loaded on truck, **Payment terms:** 100% payment prior to collection, **serial number:** 79,148, **distance:** 14,500 mm, **maximum capacity:** 3,200 kg, **dimensions (l x w x h) approx.:** 14,800 x 2,200 x 2,000 mm, **weight approx.:** 4,000 kg



No. 163

■ REMS Manual Threading Machine

Item number: 794814, **Manufacturer:** REMS, **Item available from:** Immediately, **Item condition:** unchecked, **Delivery terms:** FCA Espiel, loaded on truck, **Payment terms:** 100% payment prior to collection, **dimensions (l x w x h) approx.:** 800 x 400 x 400 mm, **weight approx.:** 40 kg



No. 164

■ Socket Wrench Cases

Includes 5 socket wrench cases

Item number: 794815, **Item available from:** Immediately, **Item condition:** unchecked, **Delivery terms:** FCA Espiel, loaded on truck, **Payment terms:** 100% payment prior to collection, **dimensions (l x w x h) approx.:** 1,200 x 800 x 250 mm, **weight approx.:** 35 kg



No. 165

■ Socket Wrench Cases

Includes 5 socket wrench cases

Item number: 795007, **Item available from:** Immediately, **Item condition:** unchecked, **Delivery terms:** FCA Espiel, loaded on truck, **Payment terms:** 100% payment prior to collection, **dimensions (l x w x h) approx.:** 1,200 x 800 x 250 mm, **weight approx.:** 35 kg

No. 167



■ HILTI Rotary Hammers

Set of 2 cordless rotary hammers
Models: TE 6-A36 / TE 6-A22

Item number: 794818, **Manufacturer:** HILTI, **Item available from:** Immediately, **Item condition:** unchecked, **Delivery terms:** FCA Espiel, loaded on truck, **Payment terms:** 100% payment prior to collection, **dimensions (l x w x h) approx.:** 400 x 400 x 350 mm, **weight approx.:** 20 kg

No. 168



■ CEMONT YARD 400SX Welding machine

Serial numbers 217-488745 / 217-4887457
Usage factor at 35%: 400 A
Usage factor at 60%: 300 A
Usage factor at 100%: 230 A
Current regulation range: 10-400 A
Three-phase connection
With wheels for easy transport

Item number: 787220, **Manufacturer:** CEMONT, **Model / Type:** YARD 400SX, **Item available from:** immediately, **Item condition:** unchecked, **Delivery terms:** FCA Espiel, loaded on truck, **Payment terms:** 100% payment prior to collection, **weight approx.:** 540 kg, **dimensions (l x w x h) approx.:** 1,400 x 1,300 x 700 mm

No. 169



■ Lot Hand Tools

Composed by:

- Magnetic base drill
- Torque wrench with sockets
- Pneumatic gun
- 2 manual tube benders
- CASTOLIN ROTOTEC 80 plastic welder

And others

Item number: 795009, **Item available from:** Immediately, **Item condition:** unchecked, **Delivery terms:** FCA Espiel, loaded on truck, **Payment terms:** 100% payment prior to collection, **dimensions (l x w x h) approx.:** 1,200 x 800 x 570 mm, **weight approx.:** 100 kg



■ MAKITA DBM 131 Diamond Core Drilling Machine

Wet and dry diamond core drilling machine

Serial number 0252

Maximum drill bit diameter: 132 mm

Tool holder: M 18

2 working speeds: 800 Rpm / 1570 Rpm

Power 1700W

Only used 2 times

Item number: 795010, **Manufacturer:** MAKITA, **Model / Type:** DBM 131, **Year of manufacture:** 2010, **Item available from:** Immediately, **Item condition:** unchecked, **Delivery terms:** FCA Espiel, loaded on truck, **Payment terms:** 100% payment prior to collection, **dimensions (l x w x h) approx.:** 700 x 400 x 400 mm, **weight approx.:** 40 kg



■ Lot Hand Tools

Composed by:

- Torque wrench with sockets
- Pneumatic gun
- Manual tube bender

And others

Item number: 795011, **Item available from:** Immediately, **Item condition:** unchecked, **Delivery terms:** FCA Espiel, loaded on truck, **Payment terms:** 100% payment prior to collection, **dimensions (l x w x h) approx.:** 1,200 x 800 x 250 mm, **weight approx.:** 100 kg



■ HIKOKI Manual Grinders

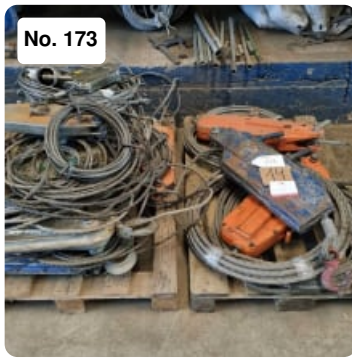
Lot of manual grinders

Composition:

- 3 HIKOKI GS23SW2 Units
- 1 HIKOKI G 13SW(S) Unit

Never used before

Item number: 795012, **Manufacturer:** HIKOKI, **Year of manufacture:** 2021, **Item available from:** Immediately, **Item condition:** unchecked, **Delivery terms:** FCA Espiel, loaded on truck, **Payment terms:** 100% payment prior to collection, **dimensions (l x w x h) approx.:** 800 x 600 x 420 mm, **weight approx.:** 50 kg



No. 173

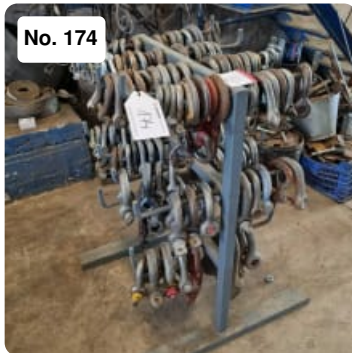
■ Lifting Devices

Lifting devices

14 units

Different brands, models and capacities

Item number: 795013, **Item available from:** Immediately, **Item condition:** unchecked, **Delivery terms:** FCA Espiel, loaded on truck, **Payment terms:** 100% payment prior to collection, **dimensions (l x w x h) approx.:** 1,600 x 1,200 x 750 mm, **weight approx.:** 280 kg



No. 174

■ Lot of Shackles

Different diameters, models and brands

Support rack included

Item number: 795014, **Item available from:** Immediately, **Item condition:** unchecked, **Delivery terms:** FCA Espiel, loaded on truck, **Payment terms:** 100% payment prior to collection, **dimensions (l x w x h) approx.:** 850 x 720 x 1,000 mm, **weight approx.:** 250 kg



No. 175

■ CODESOL Beveling Machine

Item number: 795015, **Manufacturer:** CODESOL, **Item available from:** Immediately, **Item condition:** unchecked, **Delivery terms:** FCA Espiel, loaded on truck, **Payment terms:** 100% payment prior to collection, **dimensions (l x w x h) approx.:** 1,030 x 500 x 730 mm, **weight approx.:** 90 kg



No. 176

■ CEMONT YARD 400SX Welding Machines

Serial numbers 217-488195 / 217-4881945

Usage factor at 35%: 400 A

Usage factor at 60%: 300 A

Usage factor at 100%: 230 A

Current regulation range: 10-400 A

Three-phase connection

With wheels for easy transport

Item number: 787221, **Manufacturer:** CEMONT, **Model / Type:** YARD 400SX, **Item available from:** immediately, **Item condition:** unchecked, **Delivery terms:** FCA Espiel, loaded on truck, **Payment terms:** 100% payment prior to collection, **weight approx.:** 540 kg, **dimensions (l x w x h) approx.:** 1,800 x 1,500 x 600 mm



■ Loading Elements

Different lengths and diameters.
The scale does not have a charger.
Check photos for more information.

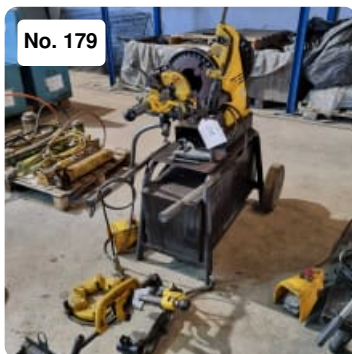
Item number: 795016, **Item available from:** Immediately, **Item condition:** unchecked,
Delivery terms: FCA Espiel, loaded on truck, **Payment terms:** 100% payment prior to collection, **dimensions (l x w x h) approx.:** 1,000 x 500 x 350 mm, **weight approx.:** 150 kg



■ Painting Booth

Dry painting booth
Suction surface: 4900 x 2000 mm
It has 2 SODECA suction turbines

Item number: 795018, **Item available from:** Immediately, **Item condition:** unchecked,
Delivery terms: FCA Espiel, loaded on truck, **Payment terms:** 100% payment prior to collection, **dimensions (l x w x h) approx.:** 5,100 x 1,050 x 2,650 mm, **weight approx.:** 500 kg



■ REMS Magnum Threading Machine

REMS Magnum threading machine
Pipe threads from 16 to 63 mm
Pipe grooving with grooving devices DN 25-300
Motor power 2100 W
Includes accessories
Pedal operated
Trolley with wheels for easy transport

Item number: 795020, **Manufacturer:** REMS, **Model / Type:** Magnum, **Item available from:** Immediately, **Item condition:** unchecked, **Delivery terms:** FCA Espiel, loaded on truck, **Payment terms:** 100% payment prior to collection, **weight approx.:** 250 kg, **dimensions (l x w x h) approx.:** 1,300 x 600 x 1,100 mm

No. 180



■ MAKITA 9565 PCV Other Sheet Metal Processing Machine

Inner beveling machine
Diameter: 125 mm
M14
Power 1400 W
Max. working speed 12000 Rpm
With COFIM PU3 beveling device

Item number: 795021, **Manufacturer:** MAKITA, **Model / Type:** 9565 PCV, **Item available from:** Immediately, **Item condition:** unchecked, **Delivery terms:** FCA Espiel, loaded on truck, **Payment terms:** 100% payment prior to collection, **dimensions (l x w x h) approx.:** 770 x 600 x 340 mm, **weight approx.:** 25 kg

No. 181



■ HILTI Rotary Hammers

Lot of 2 rotary hammers
Models: TE 30-ATC y TE 16

Item number: 795094, **Manufacturer:** HILTI, **Item available from:** Immediately, **Item condition:** unchecked, **Delivery terms:** FCA Espiel, loaded on truck, **Payment terms:** 100% payment prior to collection, **dimensions (l x w x h) approx.:** 400 x 400 x 350 mm, **weight approx.:** 30 kg

No. 182



■ EGA MASTER CURVAMATIC 2 Pipe Bending Machine

Hydraulic pipe bender
CURVAMATIC 2 model
Outside diameter: 1/4" to 2"
Maximum degree of curvature: 90°
2 speeds and fast action
Accessories included

Item number: 795022, **Manufacturer:** EGA MASTER, **Model / Type:** CURVAMATIC 2, **Item available from:** Immediately, **Item condition:** unchecked, **Delivery terms:** FCA Espiel, loaded on truck, **Payment terms:** 100% payment prior to collection, **weight approx.:** 75 kg, **dimensions (l x w x h) approx.:** 970 x 410 x 370 mm

No. 183



■ Lubricator and Pressure Testers

Lot consisting of a lubricator and 2 pressure testers
See photos for more information

Item number: 795091, **Item available from:** Immediately, **Item condition:** unchecked, **Delivery terms:** FCA Espiel, loaded on truck, **Payment terms:** 100% payment prior to collection, **dimensions (l x w x h) approx.:** 800 x 700 x 970 mm, **weight approx.:** 30 kg



Manual Pulleys

Lot of manual pulleys
21 Units
Different models, brands and loading capacities
Support shelf NOT included
See photos for more information

Item number: 795092, **Item available from:** Immediately, **Item condition:** unchecked,
Delivery terms: FCA Espiel, loaded on truck, **Payment terms:** 100% payment prior to collection, **dimensions (l x w x h) approx.:** 2,000 x 200 x 1,800 mm, **weight approx.:** 300 kg



GURUTZPE SUPER A 4000/500 Centre Lathe

Max. Ø over bedplate 500 mm
Distance between points 4000 mm
Plate diameter: 500 mm
Bar passage: 140 mm

Item number: 787225, **Manufacturer:** GURUTZPE, **Model / Type:** SUPER A 4000/500,
Item available from: immediately, **Item condition:** unchecked, **Delivery terms:** FCA Espiel, loaded on truck, **Payment terms:** 100% payment prior to collection, **weight approx.:** 8,000 kg, **dimensions (l x w x h) approx.:** 6,300 x 1,400 x 1,000 mm



Hand Tools

Composed by grinders and hand tools

Item number: 793003, **Item available from:** Immediately, **Item condition:** unchecked,
Delivery terms: FCA Espiel, loaded on truck, **Payment terms:** 100% payment prior to collection, **dimensions (l x w x h) approx.:** 1,200 x 800 x 500 mm, **weight approx.:** 80 kg



No. 187

■ ATLAS COPCO GA 37 Screw Compressor

Screw compressor
Serial number API532862
Power 37 kW
Working pressure: 10 bar
Delivery: 93 l/s
Delivery: 5.58 m³/min
Approximate working hours: 10500 h
CE regulations

Item number: 789267, **Manufacturer:** ATLAS COPCO, **Model / Type:** GA 37, **Year of manufacture:** 2010, **Item available from:** Immediately, **Item condition:** unchecked, **Delivery terms:** FCA Espiel, loaded on truck, **Payment terms:** 100% payment prior to collection, **flow rate:** 93 l/s, **operating pressure:** 10 bar, **year of manufacture:** 2,010, **dimensions (l x w x h) approx.:** 1,400 x 880 x 1,860 mm, **weight approx.:** 787 kg

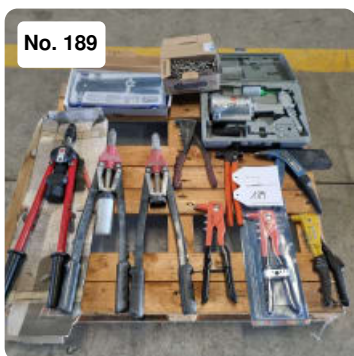


No. 188

■ ATLAS COPCO FD 130 Air Dryer

Compressed air dryer
Serial number CAQ112072
Working pressure: 13 bar
Maximum temperature: 55° C
CE regulations

Item number: 789268, **Manufacturer:** ATLAS COPCO, **Model / Type:** FD 130, **Year of manufacture:** 2004, **Item available from:** Immediately, **Item condition:** unchecked, **Delivery terms:** FCA Espiel, loaded on truck, **Payment terms:** 100% payment prior to collection, **dimensions (l x w x h) approx.:** 700 x 950 x 1,020 mm, **weight approx.:** 122 kg



No. 189

■ Lot of Riveters

Lot of manual riveters
Different models, brands and capacities
11 units
Some of them never used before
See photos for more information

Item number: 795089, **Item available from:** Immediately, **Item condition:** unchecked, **Delivery terms:** FCA Espiel, loaded on truck, **Payment terms:** 100% payment prior to collection, **dimensions (l x w x h) approx.:** 800 x 800 x 250 mm, **weight approx.:** 20 kg



■ MILWAUKEE Impact Wrenches

Lot consisting of 2 impact wrenches
Wireless
Charger and extra batteries included

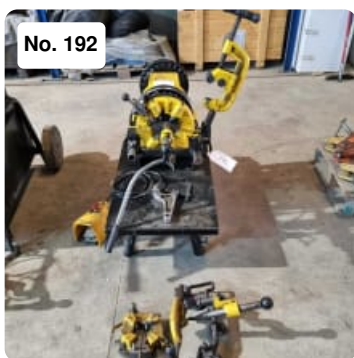
Item number: 795088, **Manufacturer:** MILWAUKEE, **Item available from:** Immediately, **Item condition:** unchecked, **Delivery terms:** FCA Espiel, loaded on truck, **Payment terms:** 100% payment prior to collection, **dimensions (l x w x h) approx.:** 400 x 400 x 300 mm, **weight approx.:** 10 kg



■ GREEN CAT 2000 W Chainsaws

2 units
Power 2000W
Maximum cut 405 mm
Chain speed: 13.5 m/s
150 ml oil tank.
Voltage 230 V

Item number: 795090, **Manufacturer:** GREEN CAT, **Model / Type:** 2000 W, **Item available from:** Immediately, **Item condition:** unchecked, **Delivery terms:** FCA Espiel, loaded on truck, **Payment terms:** 100% payment prior to collection, **dimensions (l x w x h) approx.:** 830 x 800 x 320 mm, **weight approx.:** 30 kg



■ REMS Magnum Threading Machine

Threading machine
Serial number 41438-2017
Pipe threads from 16 to 63 mm
Pipe grooving with grooving devices DN 25-300
Motor power 2100 W
Includes accessories
Pedal operated

Item number: 795019, **Manufacturer:** REMS, **Model / Type:** Magnum, **Year of manufacture:** 2017, **Item available from:** Immediately, **Item condition:** unchecked, **Delivery terms:** FCA Espiel, loaded on truck, **Payment terms:** 100% payment prior to collection, **weight approx.:** 250 kg, **dimensions (l x w x h) approx.:** 1,000 x 500 x 800 mm



No. 193

■ Hand Tools

Composed by grinders and hand tools

Item number: 793005, **Item available from:** Immediately, **Item condition:** unchecked, **Delivery terms:** FCA Espiel, loaded on truck, **Payment terms:** 100% payment prior to collection, **dimensions (l x w x h) approx.:** 1,200 x 800 x 500 mm, **weight approx.:** 80 kg



No. 194

■ Lot of Hydraulic Cylinders

7 units

Different diameters and load capacities

Item number: 795096, **Item available from:** Immediately, **Item condition:** unchecked, **Delivery terms:** FCA Espiel, loaded on truck, **Payment terms:** 100% payment prior to collection, **dimensions (l x w x h) approx.:** 1,200 x 800 x 820 mm, **weight approx.:** 400 kg



No. 195

■ IK-12 Max-II Flame Cutting Machine

Serial number 95314

Cutting speed: 80 - 800 mm/min

It has 2 perforated guides of 3600 mm approx. full length

Item number: 795097, **Manufacturer:** IK-12, **Model / Type:** Max-II, **Item available from:** Immediately, **Item condition:** unchecked, **Delivery terms:** FCA Espiel, loaded on truck, **Payment terms:** 100% payment prior to collection, **weight approx.:** 50 kg, **dimensions (l x w x h) approx.:** 1,830 x 800 x 480 mm



No. 196

■ Hand Tools

Composed by grinders and hand tools

Item number: 792997, **Item available from:** Immediately, **Item condition:** unchecked, **Delivery terms:** FCA Espiel, loaded on truck, **Payment terms:** 100% payment prior to collection, **dimensions (l x w x h) approx.:** 1,200 x 800 x 500 mm, **weight approx.:** 80 kg

No. 197



■ LECIÑENA SRP-13600-EX-N-S Semitrailer

Serial number VSRSX3C01ML055838

Registration plate R 2496 BBJ

Maximum load capacity 35,000 Kg

Extendable from 13,610 to 20,510 mm

Equipped with axle lift

3 axis

Tires 385/65 R 22.5

The client is responsible for the change of ownership. Vehicle transferred with notification of sale.

Item number: 796285, **Manufacturer:** LECIÑENA, **Model / Type:** SRP-13600-EX-N-S, **Year of manufacture:** 2002, **Item available from:** Immediately, **Item condition:** unchecked, **Delivery terms:** FCA Espiel, loaded on truck, **Payment terms:** 100% payment prior to collection, **dimensions (l x w x h) approx.:** 13,610 x 2,550 x 4,000 mm, **weight approx.:** 8,220 kg

No. 198



■ Aluminum Ladders

Aluminum ladders

Different brands, models and lengths

9 units approx.

Item number: 796288, **Item available from:** Immediately, **Item condition:** unchecked, **Delivery terms:** FCA Espiel, loaded on truck, **Payment terms:** 100% payment prior to collection, **dimensions (l x w x h) approx.:** 3,800 x 1,500 x 1,500 mm, **weight approx.:** 100 kg

No. 199



■ ATLAS COPCO GA 50 VSD FF Screw Compressor

Serial number All 352721

Power: 50 kW

Maximum working speed: 4820 Rpm

Flow rate: 153 l/s

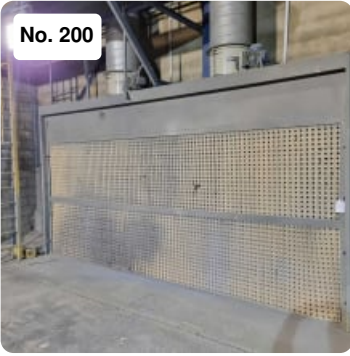
Maximum working pressure: 13 bar

Working hours according to the counter: 51951 h

CE Standards

Item number: 796286, **Manufacturer:** ATLAS COPCO, **Model / Type:** GA 50 VSD FF, **Item available from:** Immediately, **Item condition:** unchecked, **Delivery terms:** FCA Espiel, loaded on truck, **Payment terms:** 100% payment prior to collection, **model:** GA 50 VSD FF, **year of manufacture:** 2,001, **dimensions (l x w x h) approx.:** 2,100 x 950 x 1,940 mm, **weight approx.:** 1,250 kg

No. 200



■ Painting Booth

Dry painting booth
Suction surface: 4900 x 2000 mm
It has 2 SODECA suction turbines

Item number: 795017, **Item available from:** Immediately, **Item condition:** unchecked,
Delivery terms: FCA Espiel, loaded on truck, **Payment terms:** 100% payment prior to collection, **dimensions (l x w x h) approx.:** 5,100 x 1,050 x 2,650 mm, **weight approx.:** 500 kg

No. 201



■ FICAL FIC-2000/11 Air Vessel

Serial number 3564
Design pressure: 11 kg/cm²
Tank capacity: 2000 L.

Item number: 796287, **Manufacturer:** FICAL, **Model / Type:** FIC-2000/11, **Year of manufacture:** 2001, **Item available from:** Immediately, **Item condition:** unchecked,
Delivery terms: FCA Espiel, loaded on truck, **Payment terms:** 100% payment prior to collection, **dimensions (l x w x h) approx.:** 2,800 x 1,200 x 1,200 mm, **weight approx.:** 250 kg

No. 202



■ SPRAYMAQ SPRAYBLAST GIT 1455 Equipment for Shot Blasting Installation

Serial number 1037
It has 2 blasting units and filters for dust collection
Working hours according to counter: 13793 h
Approximate measurements and weights

Item number: 796290, **Manufacturer:** SPRAYMAQ, **Model / Type:** SPRAYBLAST GIT 1455, **Year of manufacture:** 2001, **Item available from:** Immediately, **Item condition:** unchecked, **Delivery terms:** FCA Espiel, loaded on truck, **Payment terms:** 100% payment prior to collection, **dimensions (l x w x h) approx.:** 8,000 x 3,000 x 4,500 mm, **weight approx.:** 6,000 kg

No. 203



■ Workbench with Tools

Workbench dimensions 1800 x 1100 x 1000
HECO cabinet dimensions 1800 x 900 x 170 mm
Tools and accessories included

Item number: 796291, **Item available from:** Immediately, **Item condition:** unchecked,
Delivery terms: FCA Espiel, loaded on truck, **Payment terms:** 100% payment prior to collection, **dimensions (l x w x h) approx.:** 1,800 x 1,300 x 1,500 mm, **weight approx.:** 350 kg



■ Lot of Electrical Components

Composed of cables, plugs and connectors
Different models, brands and capacities
Shelf included
Shelf size: 2410 x 410 x 1210
Some of them never used before

Item number: 796289, **Item available from:** Immediately, **Item condition:** unchecked,
Delivery terms: FCA Espiel, loaded on truck, **Payment terms:** 100% payment prior to collection, **dimensions (l x w x h) approx.:** 3,400 x 1,400 x 1,800 mm, **weight approx.:** 250 kg



■ HILTI DX 460 Gunpowder Nailers

Lot consisting of 2 gunpowder nailers
DX 460 models
Accessories included

Item number: 795102, **Manufacturer:** HILTI, **Model / Type:** DX 460, **Item available from:** Immediately, **Item condition:** unchecked, **Delivery terms:** FCA Espiel, loaded on truck, **Payment terms:** 100% payment prior to collection, **dimensions (l x w x h) approx.:** 800 x 600 x 800 mm, **weight approx.:** 100 kg



■ Lighting Elements

Lighting elements
Composed of spotlights of different sizes, brands and models
Some of them never used before

Item number: 796293, **Item available from:** Immediately, **Item condition:** unchecked,
Delivery terms: FCA Espiel, loaded on truck, **Payment terms:** 100% payment prior to collection, **dimensions (l x w x h) approx.:** 2,000 x 1,250 x 1,000 mm, **weight approx.:** 120 kg



■ B&B ELEVATORS Lifting Equipment

Maximum lifting height 1660 mm
Maximum load capacity: 200 Kg
Fork length: 665 x 180 mm
Without battery charger

Item number: 796296, **Manufacturer:** B&B ELEVATORS, **Item available from:** Immediately, **Item condition:** unchecked, **Delivery terms:** FCA Espiel, loaded on truck, **Payment terms:** 100% payment prior to collection, **dimensions (l x w x h) approx.:** 1,450 x 900 x 2,100 mm, **weight approx.:** 300 kg



No. 208

■ Hand Tools

Composed by grinders and hand tools

Item number: 793001, **Item available from:** Immediately, **Item condition:** unchecked, **Delivery terms:** FCA Espiel, loaded on truck, **Payment terms:** 100% payment prior to collection, **dimensions (l x w x h) approx.:** 1,200 x 800 x 500 mm, **weight approx.:** 80 kg



No. 209

■ Cable Reels

Lot of cable reels

Different sections, diameters and manufacturers

See photos for more information

Item number: 796294, **Item available from:** Immediately, **Item condition:** unchecked, **Delivery terms:** FCA Espiel, loaded on truck, **Payment terms:** 100% payment prior to collection, **dimensions (l x w x h) approx.:** 1,200 x 1,000 x 1,860 mm, **weight approx.:** 200 kg



No. 210

■ HYPER THERM MAX 43 Plasma Cutting Machine

Item number: 796295, **Manufacturer:** HYPER THERM, **Model / Type:** MAX 43, **Item available from:** Immediately, **Item condition:** unchecked, **Delivery terms:** FCA Espiel, loaded on truck, **Payment terms:** 100% payment prior to collection, **weight approx.:** 20 kg, **dimensions (l x w x h) approx.:** 800 x 520 x 470 mm



No. 211

■ Hand Tools

Composed by grinders and hand tools

Item number: 793002, **Item available from:** Immediately, **Item condition:** unchecked, **Delivery terms:** FCA Espiel, loaded on truck, **Payment terms:** 100% payment prior to collection, **dimensions (l x w x h) approx.:** 1,200 x 800 x 500 mm, **weight approx.:** 80 kg



■ Transformer and Electrical Cabinets

Lot consisting of a transformer and 4 electrical cabinets
 TORYTRANS ATCX045 Transformer
 Power 45 KVA

Item number: 796297, **Item available from:** Immediately, **Item condition:** unchecked,
Delivery terms: FCA Espiel, loaded on truck, **Payment terms:** 100% payment prior to collection, **dimensions (l x w x h) approx.:** 1,200 x 900 x 860 mm, **weight approx.:** 120 kg



■ Lot of Fans

Different models, brands and capacities
 7 units
 See photos for more information

Item number: 796298, **Item available from:** Immediately, **Item condition:** unchecked,
Delivery terms: FCA Espiel, loaded on truck, **Payment terms:** 100% payment prior to collection, **dimensions (l x w x h) approx.:** 1,800 x 1,700 x 1,200 mm, **weight approx.:** 130 kg



■ Welding Device Accessory

Welding hoses
 Different models and applications
 About 45 units

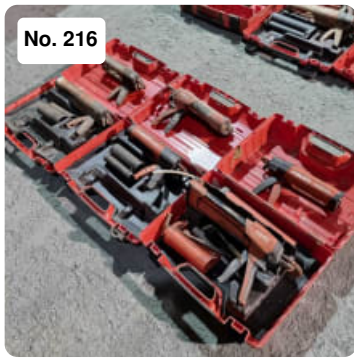
Item number: 796299, **Item available from:** Immediately, **Item condition:** unchecked,
Delivery terms: FCA Espiel, loaded on truck, **Payment terms:** 100% payment prior to collection, **dimensions (l x w x h) approx.:** 2,000 x 900 x 1,500 mm, **weight approx.:** 300 kg



■ SAF CUT 80 Plasma Cutting Machine

Serial number 4184461
 Usage factor at 35%: 80 A
 Usage factor at 60%: 50 A
 Usage factor at 100%: 30 A
 Current regulation range: 30-80 A
 CE Standards
 With wheels for easy transport

Item number: 796300, **Manufacturer:** SAF, **Model / Type:** CUT 80, **Item available from:** Immediately, **Item condition:** unchecked, **Delivery terms:** FCA Espiel, loaded on truck, **Payment terms:** 100% payment prior to collection, **weight approx.:** 150 kg, **dimensions (l x w x h) approx.:** 700 x 520 x 860 mm



■ HILTI Manual Adhesive Applicators

Lot of manual adhesive applicators
6 units
Different models and capacities

Item number: 795098, **Manufacturer:** HILTI, **Item available from:** Immediately, **Item condition:** unchecked, **Delivery terms:** FCA Espiel, loaded on truck, **Payment terms:** 100% payment prior to collection, **dimensions (l x w x h) approx.:** 600 x 400 x 600 mm, **weight approx.:** 20 kg



■ SELCO Welding Devices

Composed by:
- 1 SELCO Quasar 270 TLH welding unit
- 1 SELCO Genesis 245 TLH welding unit
With wheels for easy transport

Item number: 796301, **Manufacturer:** SELCO, **Item available from:** Immediately, **Item condition:** unchecked, **Delivery terms:** FCA Espiel, loaded on truck, **Payment terms:** 100% payment prior to collection, **weight approx.:** 200 kg, **dimensions (l x w x h) approx.:** 1,160 x 620 x 1,080 mm



■ SELCO Welding Devices

3 units
Diferent models

Item number: 796302, **Manufacturer:** SELCO, **Item available from:** Immediately, **Item condition:** unchecked, **Delivery terms:** FCA Espiel, loaded on truck, **Payment terms:** 100% payment prior to collection, **weight approx.:** 200 kg, **dimensions (l x w x h) approx.:** 1,200 x 1,070 x 1,100 mm



■ CEA RAINBOW 201 HF Welding Device (mobile)

Serial number CD 055008
Usage factor at 25% : 200 A
Usage factor at 60%: 140 A
Usage factor at 100%: 120 A
Current regulation range: 50-200 A
CE Standards

Item number: 796292, **Manufacturer:** CEA, **Model / Type:** RAINBOW 201 HF, **Item available from:** Immediately, **Item condition:** unchecked, **Delivery terms:** FCA Espiel, loaded on truck, **Payment terms:** 100% payment prior to collection, **weight approx.:** 10 kg, **dimensions (l x w x h) approx.:** 500 x 400 x 300 mm

No. 220



■ Working Tools

Item number: 795099, **Item available from:** Immediately, **Item condition:** unchecked, **Delivery terms:** FCA Espiel, loaded on truck, **Payment terms:** 100% payment prior to collection, **dimensions (l x w x h) approx.:** 500 x 500 x 300 mm, **weight approx.:** 20 kg

No. 221



■ LECIÑENA SRP-13500-EX-N-S Semitrailer

Serial number VSRSX3M02ML056997

Registration R 8321 BBK

Maximum load capacity 35,000 Kg

Extendable from 13,600 to 20,600 mm

Equipped with axle lift

3 axis

Tires 385/65 R 22.5

The client is responsible for the change of ownership. Vehicle transferred with notification of sale.

Item number: 796284, **Manufacturer:** LECIÑENA, **Model / Type:** SRP-13500-EX-N-S, **Year of manufacture:** 2002, **Item available from:** Immediately, **Item condition:** unchecked, **Delivery terms:** FCA Espiel, loaded on truck, **Payment terms:** 100% payment prior to collection, **dimensions (l x w x h) approx.:** 13,600 x 2,550 x 4,000 mm, **weight approx.:** 8,300 kg

No. 223



■ Lifting equipment

Set consisting of 4 forks to load pallets

· 3 units with 890 x 80 mm forks

Maximum opening 650 mm

· 1 unit with 1240 x 100 mm forks

Maximum opening 950 mm

Item number: 795101, **Item available from:** Immediately, **Item condition:** unchecked, **Delivery terms:** FCA Espiel, loaded on truck, **Payment terms:** 100% payment prior to collection, **dimensions (l x w x h) approx.:** 4,000 x 1,400 x 1,820 mm, **weight approx.:** 120 kg

No. 224



Manual Pulleys

Lot of manual pulleys
21 Units
Different models, brands and loading capacities
Support shelf NOT included
See photos for more information

Item number: 795093, **Item available from:** Immediately, **Item condition:** unchecked,
Delivery terms: FCA Espiel, loaded on truck, **Payment terms:** 100% payment prior to collection, **dimensions (l x w x h) approx.:** 2,000 x 200 x 1,800 mm, **weight approx.:** 300 kg

No. 225



Hand Tools

Composed by grinders and hand tools

Item number: 793004, **Item available from:** Immediately, **Item condition:** unchecked,
Delivery terms: FCA Espiel, loaded on truck, **Payment terms:** 100% payment prior to collection, **dimensions (l x w x h) approx.:** 1,200 x 800 x 500 mm, **weight approx.:** 80 kg

No. 226



Welding Electrodes

Welding electrodes
Different brands, models, diameters and materials
See photos for more information
Shelves NOT included

Item number: 796303, **Item available from:** Immediately, **Item condition:** unchecked,
Delivery terms: FCA Espiel, loaded on truck, **Payment terms:** 100% payment prior to collection, **dimensions (l x w x h) approx.:** 3,500 x 2,000 x 2,000 mm, **weight approx.:** 1,000 kg

No. 227



Lifting Devices

Lifting devices
14 units
Different brands, models and capacities

Item number: 796322, **Item available from:** Immediately, **Item condition:** unchecked,
Delivery terms: FCA Espiel, loaded on truck, **Payment terms:** 100% payment prior to collection, **dimensions (l x w x h) approx.:** 1,600 x 1,200 x 750 mm, **weight approx.:** 280 kg

No. 228



■ Lot of Hydraulic Cylinders

14 units

Different diameters and load capacities

Item number: 796321, **Item available from:** Immediately, **Item condition:** unchecked,

Delivery terms: FCA Espiel, loaded on truck, **Payment terms:** 100% payment prior to collection, **dimensions (l x w x h) approx.:** 800 x 600 x 820 mm, **weight approx.:** 100 kg

No. 229



■ Lot of Lifting Elements

Composed of pulleys and jaws

Different models, brands and capacities

Item number: 796320, **Item available from:** Immediately, **Item condition:** unchecked,

Delivery terms: FCA Espiel, loaded on truck, **Payment terms:** 100% payment prior to collection, **dimensions (l x w x h) approx.:** 1,200 x 1,400 x 400 mm, **weight approx.:** 200 kg

No. 230



■ Other Workshop Supply

Different models and brands

Never used before

Item number: 796319, **Item available from:** Immediately, **Item condition:** unchecked,

Delivery terms: FCA Espiel, loaded on truck, **Payment terms:** 100% payment prior to collection, **dimensions (l x w x h) approx.:** 2,400 x 1,600 x 800 mm, **weight approx.:** 600 kg

No. 236



■ Lot of 2 Submersible Pumps

Composed by:

- 1 Natuur submersible pump

Maximum capacity: 13 m³/h

Maximum working height: 8 m.

Maximum temp.: 35°C

750W

- 1 ESPA VG 400AS submersible pump

Capacity: 12-124 l/min

Maximum working height: 8 m.

Maximum temp.: 40°C

400W

Item number: 795100, **Item available from:** Immediately, **Item condition:** unchecked,

Delivery terms: FCA Espiel, loaded on truck, **Payment terms:** 100% payment prior to collection, **dimensions (l x w x h) approx.:** 500 x 400 x 500 mm, **weight approx.:** 15 kg



■ Hand Tools

Composed by grinders and hand tools

Item number: 792999, **Item available from:** Immediately, **Item condition:** unchecked, **Delivery terms:** FCA Espiel, loaded on truck, **Payment terms:** 100% payment prior to collection, **dimensions (l x w x h) approx.:** 1,200 x 800 x 500 mm, **weight approx.:** 80 kg



■ Welding Wire

Welding wire
Different brands, models and materials

Item number: 796304, **Item available from:** Immediately, **Item condition:** unchecked, **Delivery terms:** FCA Espiel, loaded on truck, **Payment terms:** 100% payment prior to collection, **dimensions (l x w x h) approx.:** 1,230 x 900 x 650 mm, **weight approx.:** 450 kg



■ Working Tools

Item number: 796305, **Item available from:** Immediately, **Item condition:** unchecked, **Delivery terms:** FCA Espiel, loaded on truck, **Payment terms:** 100% payment prior to collection, **dimensions (l x w x h) approx.:** 100 x 1,200 x 1,400 mm, **weight approx.:** 100 kg



■ LECIÑENA SRP-2E Working Platform / Elevator (Construction)

Serial number ML60827
Registration plate: CO 00869 R
Maximum load capacity: 31,800 Kg
2 axes
Tires 315/80 R 22.5

The client is responsible for the change of ownership. Vehicle transferred with notification of sale.

Item number: 796317, **Manufacturer:** LECIÑENA, **Model / Type:** SRP-2E, **Year of manufacture:** 1988, **Item available from:** Immediately, **Item condition:** unchecked, **Delivery terms:** FCA Espiel, loaded on truck, **Payment terms:** 100% payment prior to collection, **dimensions (l x w x h) approx.:** 13,100 x 2,500 x 4,000 mm, **weight approx.:** 6,800 kg



■ Hand Tools

Composed by grinders and hand tools

Item number: 792996, **Item available from:** Immediately, **Item condition:** unchecked, **Delivery terms:** FCA Espiel, loaded on truck, **Payment terms:** 100% payment prior to collection, **dimensions (l x w x h) approx.:** 1,200 x 800 x 500 mm, **weight approx.:** 80 kg



■ Welding Electrodes

Welding electrodes
Different brands, models, diameters and materials
See photos for more information
Shelves NOT included

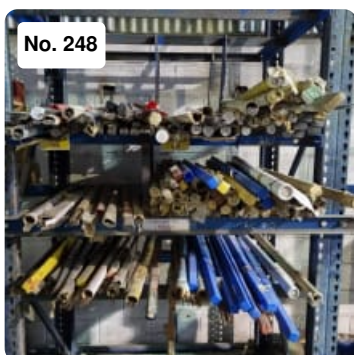
Item number: 796306, **Item available from:** Immediately, **Item condition:** unchecked, **Delivery terms:** FCA Espiel, loaded on truck, **Payment terms:** 100% payment prior to collection, **dimensions (l x w x h) approx.:** 3,500 x 2,000 x 2,000 mm, **weight approx.:** 600 kg



■ Electrode Ovens

12 units
Different models, brands and capacities

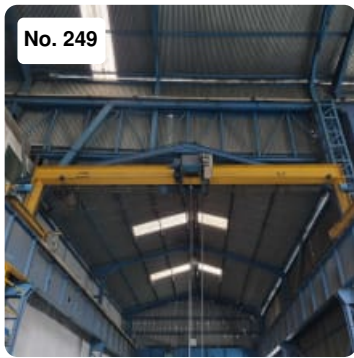
Item number: 796307, **Item available from:** Immediately, **Item condition:** unchecked, **Delivery terms:** FCA Espiel, loaded on truck, **Payment terms:** 100% payment prior to collection, **dimensions (l x w x h) approx.:** 1,200 x 800 x 1,300 mm, **weight approx.:** 120 kg



■ Welding Rods

Different lengths, materials and brands

Item number: 796308, **Item available from:** Immediately, **Item condition:** unchecked, **Delivery terms:** FCA Espiel, loaded on truck, **Payment terms:** 100% payment prior to collection, **dimensions (l x w x h) approx.:** 1,500 x 1,200 x 1,000 mm, **weight approx.:** 250 kg



■ GH 6.3 Tn Overhead Crane

Serial number 59502
Maximum load capacity: 6.3 Tn
Useful measurement: 7.500 mm
With pendant control
Blue rails and power line not included

Important Note:

This item will be available at the end of the upload dates.

Item number: 796309, **Manufacturer:** G&H, **Model / Type:** 6.3 Tn, **Year of manufacture:** 1998, **Item available from:** Immediately, **Item condition:** unchecked, **Delivery terms:** FCA Espiel, loaded on truck, **Payment terms:** 100% payment prior to collection, **dimensions (l x w x h) approx.:** 7,800 x 2,400 x 2,100 mm, **weight approx.:** 3,000 kg



■ Toolboxes

Toolboxes
25 units
Tools included
See photos for more information

Item number: 795103, **Item available from:** Immediately, **Item condition:** unchecked, **Delivery terms:** FCA Espiel, loaded on truck, **Payment terms:** 100% payment prior to collection, **dimensions (l x w x h) approx.:** 3,000 x 2,000 x 600 mm, **weight approx.:** 250 kg



■ Strapping Machine

Manual strapping machine
Coil diameter: 630 mm
Maximum coil width: 70 mm
Strap width: 19mm
Strapping device included
With wheels for easy transport

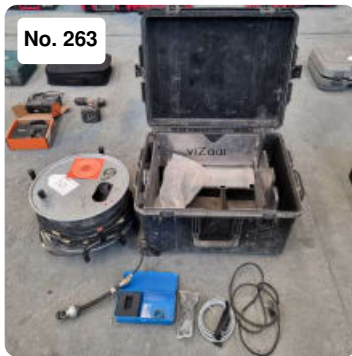
Item number: 794677, **Item available from:** Immediately, **Item condition:** unchecked, **Delivery terms:** FCA Espiel, loaded on truck, **Payment terms:** 100% payment prior to collection, **dimensions (l x w x h) approx.:** 630 x 500 x 1,040 mm, **weight approx.:** 30 kg



■ Hand Tools

Composed by grinders, hand tools and a drill

Item number: 793008, **Item available from:** Immediately, **Item condition:** unchecked, **Delivery terms:** FCA Espiel, loaded on truck, **Payment terms:** 100% payment prior to collection, **dimensions (l x w x h) approx.:** 1,200 x 800 x 500 mm, **weight approx.:** 80 kg



■ VIZAAR Inviz Probe

Serial number 5094
30 meters
Power 60 W
Video standard: PAL
CE regulations

Item number: 795104, **Manufacturer:** VIZAAR, **Model / Type:** Inviz, **Year of manufacture:** 2010, **Item available from:** Immediately, **Item condition:** unchecked, **Delivery terms:** FCA Espiel, loaded on truck, **Payment terms:** 100% payment prior to collection, **dimensions (l x w x h) approx.:** 600 x 500 x 600 mm, **weight approx.:** 30 kg



■ Welding Wire

Different brands, models and diameters.
See the specifications in the pictures

Item number: 794664, **Item available from:** Immediately, **Item condition:** unchecked, **Delivery terms:** FCA Espiel, loaded on truck, **Payment terms:** 100% payment prior to collection, **dimensions (l x w x h) approx.:** 1,200 x 800 x 600 mm, **weight approx.:** 150 kg



■ Lot of Measuring Instruments

Lot of different measuring instruments
Composed of micrometers, internal comparators, gauges and others
Different models, brands and sizes
For further information check the pictures

Item number: 796331, **Item available from:** Immediately, **Item condition:** unchecked, **Delivery terms:** FCA Espiel, loaded on truck, **Payment terms:** 100% payment prior to collection, **weight approx.:** 60 kg, **dimensions (l x w x h) approx.:** 1,500 x 1,200 x 1,000 mm



■ SORALUCE TR1-1600 Radial Drilling Machine

Serial number 2362 11405

Work table measurements: 1250 x 900 x 500 mm

Working speed from 24 to 1210 Rpm

Approximate horizontal travel: 1300 mm

Approximate vertical travel: 900 mm

Motor disassembled !!

Item number: 796404, **Manufacturer:** SORALUCE, **Model / Type:** TR1-1600, **Item available from:** Immediately, **Item condition:** unchecked, **Delivery terms:** FCA Espiel, loaded on truck, **Payment terms:** 100% payment prior to collection, **weight approx.:** 2,500 kg, **dimensions (l x w x h) approx.:** 2,500 x 1,040 x 3,100 mm