

Auction Catalogue

Surplex Metalworking Auction (Portugal)

The items are in different locations (see item description)

Viewing by appointment only!
For the inspection, please contact Pedro Carriço:
pedro.carrico@surplex.com

163 lots

Bidding ends:

Wednesday, 14/09/2022, 11:00(local time)

Bids are welcome immediately and can be placed at:

Contact:

Pedro Carriço
+351 226169328
pedro.carrico@surplex.com
www.surplex.com

Viewing:

The items are in different locations (see item description)

Viewing by appointment only!
For the inspection, please contact Pedro Carriço:
pedro.carrico@surplex.com

Description:

Metalworking Auction, different locations

Important:

1. The item list is being continuously updated - please check back regularly!
2. In most cases, several items are located at one place - please sort list by "location"!



DR. HEINR. SCHNEIDER GMBH & CO ST 750 Amplifier Profile Projector

Horizontal Measuring Projector
Serial number 015095
750mm Projection Screen
Goniometer 360° Pivotable

Item number: 731524, Manufacturer: DR. HEINR. SCHNEIDER GMBH & CO, Model / Type: ST 750, Year of manufacture: 1990, Item available from: Immediately, Item condition: unchecked, Delivery terms: FCA Trofa, loaded on truck, Payment terms: 100% payment prior to collection, dimensions (l x w x h) approx.: 3,000 x 2,200 x 2,200 mm, weight approx.: 1,200 kg



TORNOS-BECHLER DECO 2000/20 CNC Lathe

Serial number: T 62013
Bar passage: 26 mm (32 mm)
Length of part in one feed. 240 mm
Spindle speed. 0-8000 Rpm
Max. spindle power: 7,5 kW
Max. number of tools at guide bush: 10
Max. number of tools on combination attachment: 4
Speed of counter spindle : 0-8000 rpm
Max. number of tools in counter-operation: 7
Max. number of axes: 10 (12 / axis C)
Working hours according to the counter: 55164 h
Control: Fanuc PNC DECO

Automatic barfeeder: ROBOBAR SSF 226
Serial number: C-14115

NSM MAGNETTECHNIK SWARF ROTOR included

TORNOS

6500 mm x 1500 mm x 2200 mm
FEDDER
4500 mm x 900 mm x 1500 mm
MAGNETTECHNIK SWARF ROTOR
2000 mm x 1500 mm x 500 mm

Item number: 733998, Manufacturer: TORNOS-BECHLER, Model / Type: DECO 2000/20, Year of manufacture: 1998, Item available from: Immediately, Item condition: unchecked, Delivery terms: FCA Oiã, loaded on truck, Payment terms: 100% payment prior to collection, dimensions (l x w x h) approx.: 6,500 x 1,500 x 2,200 mm, weight approx.: 3,750 kg



WALTER HELITRONIC-POWER Profile Grinding Machine

5 AXIS CNC Toll & Cutter Grinder
Walter Helitronic Power HMC-400 Specifications:
Capacity of Workpiece Dia.: 1mm – 99mm
Max. Peripheral Grinding: 254mm
Max. End Face Grinding: 185mm
Max. X Axis Travel: 350mm
Max. Y Axis Travel: 200mm
Max. Z Axis Travel: 470mm
A Axis: Infinite
C Axis Rotary: +/- 200° (0.001°)
Grinding Spindle Motor: 16 hp

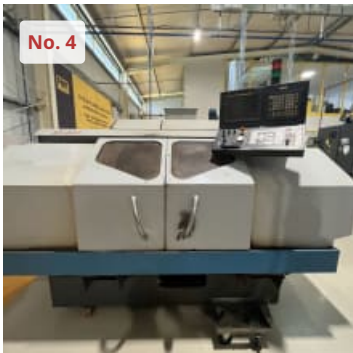
Grinding Wheel Type: Diamond or CBN Grinding
Wheel Dia. Max.: 150 mm
Grinding Wheel Speed: 500 to 10,500 RPM
Programs include: Drill, End Mill and Form Tool
Double side grinding spindle

Walter Helitronic Power HMC-400 Equipped With:
10,500 RPM Precision Spindle
Windows based Walter cnc Control
CBN Diamond Wheel installed
Probing system

Coolant and Filtration System (small tanque)
Full Enclosure
WorkLight
Serial number: 6293

On this machine, computer works, but it has at least one of axis drivers damaged.

Item number: 731546, Manufacturer: WALTER, Model / Type: HELI-POWER, Year of manufacture: 1996, Item available from: Immediately, Item condition: unchecked, Delivery terms: FCA Trofa, loaded on truck, Payment terms: 100% payment prior to collection, control: HMC 400 WWM, weight approx.: 4,000 kg, dimensions (l x w x h) approx.: 1,500 x 2,500 x 2,200 mm



KELLENBERGER KEL-VISTA CNC Lathe

CNC Lathe
Distance between points: 600 mm
Working height: 175 mm
Max. grinding length: 600 mm
Power requirement: 13 KW
Control: CNC FANUC 21 IT
KELLENBERGER KEL VISTA UR 175-1000 CNC

Needs to be checked

Item number: 731557, Manufacturer: KELLENBERGER, Model / Type: KEL-VISTA, Year of manufacture: 2002, Item available from: Immediately, Item condition: unchecked, Delivery terms: FCA Trofa, loaded on truck, Payment terms: 100% payment prior to collection, control: Fanuc 21i-T, weight approx.: 3,000 kg, dimensions (l x w x h) approx.: 4,200 x 3,000 x 2,300 mm



SCHAUBLIN 102 N Lathe

Schaublin 102n 1964
-Controls:conventional
-Working range turning: swing diameter (max) 200 mm
-Bed gap / bridge: swing diameter in bridge 120 mm
-Main spindle:spindle revolutions (max) 3000 /min
-Swing diameter (max):200 mm
-Swing diameter in bridge: 120 mm
-Spindle revolutions (max):3000 /min
-Distance betw. centers (max):450 mm
-Sleeve stroke:80 mm
-Sleeve diameter:30 mm
-Taper:MK 2
-Space requirements - left/right:-1390 mm
-Space requirements - front/back:-550 mm
-Total height:1240 mm
Lathes in Switzerland

included:
+ one set of clamping sleeves
+ tool holder and turning chisel

Item number: 684791, Manufacturer: SCHAUBLIN, Model / Type: 102 N, Year of manufacture: 1964, Item available from: immediately, Item condition: unchecked, Delivery terms: FCA Amieira, Marinha Grande, loaded on truck, Payment terms: 100% payment prior to collection, dimensions (l x w x h) approx.: 1,400 x 800 x 1,600 mm, weight approx.: 1,000 kg



MAPE VR1-BIS Flowpack

Flow-Pack horizontal packaging machine for individual product, small, versatile, adaptable to multiple solutions, and easy to handle.

DOMINO Display V-SERIES

DOMINO v200

Output: 200 /min

Bag height: 80 mm

Bag width: 150 mm

It works with all kinds of thermo-weldable films, prepared to work with Flow-Pack horizontal machines, such as: polypropylene, paper,

microperforated, aluminum, cellophane, and paper;

- Production: 90 packs/minute, depending on product length, feeding, and quality of the film applied;

- Variable speed through electronic control;

- Universal tunnel: self-centering former

- Package length: by manual command;

- Temperature control: digital and self-controlled;

- Temperature control: digital and self-controlled.

- Maximum height of film reel: 100-450mm

- Outer diameter of film reel: 350mm

- Film reel internal diameter: 60mm

- Electric supply: 220v single-phase

- Motor: 0,5cv. cc.

- Maximum product length: 30-150 / 80-400mm

- Maximum product width: 10-190 / 10-190mm

- Maximum product height: 01-050 / 01-120mm

Serial Number: 46792

Item number: 758629, Manufacturer: MAPE, Model / Type: VR1-BIS , Item available from:

Immediately, Item condition: unchecked, Delivery terms: FCA, loaded on truck, Payment terms: 100% payment prior to collection, dimensions (l x w x h) approx.: 4,600 x 950 x 1,700 mm, weight approx.: 410 kg



KELLENBERGER R125 X 600 Cylindrical Grinding Machine

Serial number: 31.207.028

Hydraulic system leakage

Item number: 731545, Manufacturer: KELLENBERGER, Model / Type: R125 X 600, Year of manufacture: 1996, Item available from: Immediately, Item condition: unchecked, Delivery terms: FCA Trofa, loaded on truck, Payment terms: 100% payment prior to collection, control: MC MESELTRON TYPE MOV 4410 A , weight approx.: 2,000 kg, dimensions (l x w x h) approx.: 3,200 x 2,000 x 2,000 mm



HAUSER S35 - 600 CNC GRINDING MACHINE

1. Work Range of the Slides

Movement:

Table - X-Axis: 20"

Saddle - Y-Axis: 12"

Grinding Head - W-Axis: 18"

Feeds:

X&Y-Axes - Working & Rapid: 0 - 47 IPM

- W-Axis: 35.5 IPM

Accuracy - X&Y-Axes: 0.00008"

Table:

- Size: 23.6"(L-R) x 15"(F-B)

2. Work Range of the Grinding Head

Grinding Speeds:

- with Grinding Motors: 4,500 - 80,000 RPM
- with Grinding Turbines: up to 100,000 and 160,000 RPM

Planetary Speed:

- C Steplessly Adjustable: 0 - 300 RPM
- NC/C Steplessly Adjustable: 0 - 5 RPM

Stroke Speed Z:

- with Rapid Stroke Z - Stepless.: 0.02 - 472 IPM
- with NC/Z Hydraulic: 0 - 59 IPM

Grinding Spindle Sleeve:

- Stroke Length Z - Stepless (Rapid Stroke Z): 4.32"
- Stroke Length Z (Manual Mode): 4.72"
- Diameter: 3.94"

Radial Infeed Range of the Grinding Wheel - NC/U: 0.21"

Cylindrical Grinding Capacity:

- with Extension Plate: 14.12"
- without Extension Plate: 9"

Taper Grinding Range - Divergent and Convergent:

- Included Angle - Maximum: 16 Deg.

- Grinding Depth w/Maximum Angle: 1.73"

Dimensions - Machine Only: 96"(L-R) x 93"(F-B)

Height - Dependent on Spindle Z Position: 104" - 127"

EQUIPPED WITH:

GE Fanuc Series 15M Control

(3) High-Speed Turbine Spindles

CBN Dressing Device with HF-drive & motor, Adj. range -10 deg / + 100 deg.

Hauser Slot Grinding Attachment Type MF 90/079

Coolant Filtration System

Umwelttechnik 99 Oil Mist Separator

Books & Manuals

Regarding the TREE, the one in the machine is from another piece of equipment, it was placed there to show that the machine works (it will not be included in the sale). The

original TREE is in a wood box that is shown in the pictures, it has a problem that is thought to be electrical.

Item number: 764305, Manufacturer: HAUSER, Model / Type: S35 - 600, Item available from: AVAILABLE, Item condition: unchecked, Delivery terms: FCA Trofa, loaded on truck, Payment terms: 100% payment prior to collection, control: GE Fanuc Series 15M Control, weight approx.: 4,500 kg, dimensions (l x w x h) approx.: 2,430 x 2,158 x 3,165 mm



HYDROVANE 148 / BS5000-99 Compressor

Made in England

Power: 22Kw

Current: 42A

Voltage: 660V

Frequency: 50Hz

3 Phases

Hours of Work: 36453h

Serial Number: DI80LM

6453h

Item number: 684799, Manufacturer: HYDROVANE, Model / Type: 148 / BS5000-99, Year of manufacture: 1997, Item available from: immediately, Item condition: unchecked, Delivery terms: FCA Amieira, Marinha Grande, loaded on truck, Payment terms: 100% payment prior to collection, dimensions (l x w x h) approx.: 1,900 x 700 x 1,000 mm, weight approx.: 500 kg



BROADBENT BLK 850 Horizontal Lathe

Horizontal Lathe Broadbent BLK 850.
 Chuck diameter: 1000 mm
 Distance over bed (from chuck center): 640 mm
 Bed lenght: 1380 mm
 DRO: Newall C80
 Without tailstock

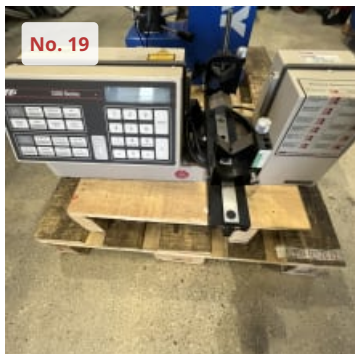
Item number: 731561, Manufacturer: BROADBENT, Model / Type: BLK 850, Year of manufacture: 1990, Item available from: Immediately, Item condition: unchecked, Delivery terms: FCA Trofa, loaded on truck, Payment terms: 100% payment prior to collection, dimensions (l x w x h) approx.: 3,400 x 2,400 x 2,000 mm, weight approx.: 6,000 kg



Automatic Cutting Machine

Total power: 1.75 kW

Item number: 731540, Year of manufacture: 2012, Item available from: Immediately, Item condition: unchecked, Delivery terms: FCA Trofa, loaded on truck, Payment terms: 100% payment prior to collection, dimensions (l x w x h) approx.: 1,400 x 1,300 x 2,200 mm, weight approx.: 350 kg



Z MIKE 1201B LASER MEASURING MACHINE Z-MIKE 1201B

Capacity: 1MW
 Electrical: 115V

Item number: 764441, Manufacturer: Z-MIKE, Model / Type: 1201B, Item available from: AVAILABLE, Item condition: unchecked, Delivery terms: FCA Trofa, loaded on truck, Payment terms: 100% payment prior to collection, dimensions (l x w x h) approx.: 600 x 400 x 300 mm, weight approx.: 20 kg



MIM IDROMIM 4060 DUROMETER

Item number: 764440, Manufacturer: MIM, Model / Type: IDROMIM 4060, Item available from: AVAILABLE, Item condition: unchecked, Delivery terms: FCA Trofa, loaded on truck, Payment terms: 100% payment prior to collection, dimensions (l x w x h) approx.: 600 x 600 x 200 mm, weight approx.: 70 kg



FERRARI A13 - E550 CNC BED TYPE MILLING MACHINE

Type: Vertical 5 axis machining milling center
 X Axis: 650 mm
 Y Axis: 320 mm
 Z Axis: 320 mm
 CNC type: ELEXA E 550
 Max. spindle speed: 23000 rpm
 Spindle taper: iso 40
 Spindle motor power: 10 kW

It has a 4th and 5th rotary table (splitter type)

Feed range of Spindle: 0 - 23000 rpm

Item number: 764546, Manufacturer: FERRARI, Model / Type: A13 - E550, Year of manufacture: 2000, Item available from: SOFORT, Item condition: unchecked, Delivery terms: FCA Trofa, loaded on truck, Payment terms: 100% payment prior to collection, toolchanger positions: 24 (rotary magazine), Drive power milling head: 12 kW, control: Elexa E550, rapid motion: 0 -15 m/min, total power requirement: 70 AMP / 20kW kW, weight approx.: 4,500 kg, dimensions (l x w x h) approx.: 4,350 x 2,350 x 2,200 mm



AKE KNEBEL F3 Sawblade Grinding Machine

Sawblade grinding machine
Partially disassembled
Need to be repaired !!

Item number: 731558, Manufacturer: AKE KNEBEL, Model / Type: F3, Year of manufacture: 1999, Item available from: Immediately, Item condition: unchecked, Delivery terms: FCA Trofa, loaded on truck, Payment terms: 100% payment prior to collection, dimensions (l x w x h) approx.: 1,100 x 1,600 x 1,700 mm, weight approx.: 800 kg



GILDEMASTER DEVLIEG EGW - 2530 Presetting Device

Serial number: 65-10-324
Partially disassembled

Item number: 731581, Manufacturer: GILDEMASTER DEVLIEG, Model / Type: EGW - 2530, Year of manufacture: 1994, Item available from: Immediately, Item condition: unchecked, Delivery terms: FCA Trofa, loaded on truck, Payment terms: 100% payment prior to collection, dimensions (l x w x h) approx.: 1,300 x 1,000 x 1,800 mm, weight approx.: 400 kg



ADIRA GHO 0630 GUILLOTINE SHEARS

Up to 10 mm cut
With support table for thin sheets
Hydraulic system: MOBIL DTE 16
Lubrication nipples spindles and guides: MOBILUX EP2
Gear boxes with worm gear: MOBIL SUPER CYLINDER OIL 600w
Cylindrical gearboxes: up to 750 rpm at the infeed: MOBILGEAR 629 - FASTER
MOBIL DTE 16
Slow open gears: MOBILTAC E
Central lubrication machined surfaces and knives: MOBIL VACTRA 4
Pneumatic System: MOBIL DTE 24
Serial Number: 1792/523

Item number: 764465, Manufacturer: ADIRA, Model / Type: GHO 0630, Year of manufacture: 1990, Item available from: AVAILABLE, Item condition: unchecked, Delivery terms: FCA, loaded on truck, Payment terms: 100% payment prior to collection, weight approx.: 6,000 kg, dimensions (l x w x h) approx.: 3,500 x 1,400 x 1,500 mm



GOITI PGA 2 CNC PUNCHING MACHINE

CNC type: CNC FAGOR
 Power in tons: 30 T
 Metal length: 1250 mm
 Metal width: 1250 mm
 Max steel thickness: 6 mm/ Max diameter: 89 mm
 Length with repositioning: 4000 mm
 Metal width with repositioning: 1250 mm
 Max Punching diameter: 89 mm
 Number of strokes per minute: 425
 Number of tools: 24

MONOBLOC MADE of NODULAR CAST IRON ALLOY

X axis : 1 ' 250 mm

Y axis : 1 ' 250 mm

AUTOMATIC REPOSITIONING: 60 m/min.

FAGOR CNC working height: 980 mm.

able dimensions: 450 x 500 mm

OVERALL DIMENSIONS 450 x 350 x 200 mm.

MAX DIAM. Punch: 89.0 mm

18 MAX STROKE 32 mm

CAR SERVICE of PHOTOCELLS stand on 4 SIDES

Item number: 764467, Manufacturer: GOITI, Model / Type: PGA 2, Year of manufacture: 1995, Item available from: AVAILABLE, Item condition: unchecked, Delivery terms: FCA, loaded on truck, Payment terms: 100% payment prior to collection, dimensions (l x w x h) approx.: 4,500 x 2,500 x 2,000 mm, weight approx.: 12,000 kg



PB ENGINEERING MTD B BENDING MACHINE

Drive: Hydraulic

Application: for sheet metal

Sheet metal thickness: 8 mm (0 in)

Iron: 8 mm

Stainless steel: 6 mm

The machine has double rotating blades, it is suitable for cutting and pearling round pieces.

The shape can be smooth or conical.

The rotation is by double hydraulic motor and the upper rollers have a vertical movement by hydraulic cylinder.

The tailstock has horizontal movement by electric motor and a display to check the position.

Down stand for flanging process.

Cutting and flanging machine

Serial Number: 515/08

Item number: 764466, Manufacturer: PB ENGINEERING, Model / Type: MTD B, Year of manufacture: 2008, Item available from: AVAILABLE, Item condition: unchecked, Delivery terms: FCA, loaded on truck, Payment terms: 100% payment prior to collection, weight approx.: 4,000 kg, dimensions (l x w x h) approx.: 6,000 x 1,750 x 1,500 mm



AMOB MAM - 50/2 SECTION BENDER

Adjustable lateral guide rolls.
 Variable speed rolling (13.6 to 27.2 RPM).
 Horizontal & vertical working position.
 Foot pedal with safety device.
 240v, 50Hz, Single Phase.
 Single Pinch.
 1.5hp motor
 50mm shaft diameter.
 Manual top roll adjustment.

Capacities

Flat bar (hard way): 60mmx10mm x Ø900mm minimum diameter
 Flat bar (easy way): 80mm x15mm x Ø700mm minimum diameter
 Square bar: 35mm x35mm x Ø1000mm minimum diameter
 Round bar: Ø35mm x Ø900mm minimum diameter
 Round tube: Ø60mm x 2mm x Ø1100mm minimum diameter
 Round pipe: Ø48.3mm x2.9mm x Ø1000mm minimum diameter
 Rectangular box (hard way): 50mm x 40mm x 3mm
 Square tube: 40mm x 40mm x 3mm
 Angle (toe out): 50mm x 50mm x 5mm x Ø800mm minimum diameter
 Angle (toe in): 50mm x 50mm x 5mm x Ø950mm minimum diameter
 T section (toe out): 50mm x 5mm x Ø700mm minimum diameter
 T section (toe in): 50mm x 5mm x Ø900mm minimum diameter
 T section (toe up/down): 50mm x 5mm x Ø900mm minimum diameter
 U channel (toe out): UPN 60 x Ø900mm minimum diameter
 U channel (toe in): UPN 60 x Ø1300mm minimum diameter

All specification based on yield strength of 240N/mm2)

Standard Tooling

Upper Roll Tooling (smooth)
 146mm OD x 15mm Thick x 2

98mm OD x 5mm Thick x 1
 98mm OD x 10mm Thick x 1
 98mm OD x 20mm Thick x 2
 98mm OD x 30mm Thick x 1

Lower Roll Tooling (knurled)

146mm OD x 15mm Thick x 2
 98mm OD x 5mm Thick x 1
 98mm OD x 10mm Thick x 1
 98mm OD x 20mm Thick x 2
 98mm OD x 30mm Thick x 1

Item number: 764472, Manufacturer: AMOB, Model / Type: MAM - 50/2, Year of manufacture: 2009, Item available from: AVAILABLE, Item condition: unchecked, Delivery terms: FCA, loaded on truck, Payment terms: 100% payment prior to collection, weight approx.: 1,000 kg, dimensions (l x w x h) approx.: 850 x 850 x 1,250 mm



ADIRA QHD-20040 CBP PRESS BRAKE

Strength: 200 T
 Folding length: 4000 mm
 Distance between uprights: 3100 mm
 Throat: 310 mm
 Vertical stroke: 100 mm
 Working speed: 6.8 mm/s
 Motor power: 11 kW
 50Hz
 300V
 Worked hours: 8073 h
 Serial Number: 5156/9551

Item number: 764474, Manufacturer: ADIRA, Model / Type: QHD-20040 CBP, Year of manufacture: 1999, Item available from: AVAILABLE, Item condition: unchecked, Delivery terms: FCA, loaded on truck, Payment terms: 100% payment prior to collection, weight approx.: 6,900 kg, dimensions (l x w x h) approx.: 3,770 x 1,730 x 2,425 mm



ADIRA GHS-1030 PRESS BRAKE

10mm cut
2588h

Item number: 764473, Manufacturer: ADIRA, Model / Type: GHS-1030, Year of manufacture: 1999, Item available from: AVAILABLE, Item condition: unchecked, Delivery terms: FCA, loaded on truck, Payment terms: 100% payment prior to collection, weight approx.: 10,000 kg, dimensions (l x w x h) approx.: 3,500 x 1,750 x 1,500 mm



CAMU SC620 M Straightener - Decoiler

Motorised
2 Tonnes
Roll width: 600 mm

Item number: 764476, Manufacturer: CAMU, Model / Type: SC620 M, Year of manufacture: 1996, Item available from: AVAILABLE, Item condition: unchecked, Delivery terms: FCA, loaded on truck, Payment terms: 100% payment prior to collection, dimensions (l x w x h) approx.: 900 x 900 x 10,250 mm, weight approx.: 350 kg



TCS 100/137 HYDRAULIC PRESS

Capacity 100 t

Item number: 764477, Manufacturer: TCS, Model / Type: 100/137, Year of manufacture: 1968, Item available from: AVAILABLE, Item condition: unchecked, Delivery terms: FCA, loaded on truck, Payment terms: 100% payment prior to collection, weight approx.: 4,500 kg, dimensions (l x w x h) approx.: 1,000 x 1,000 x 3,750 mm



TOS L27 Centre Lathe

Chuck diameter: 315 mm
Distance between points: 2000 mm
Bore diameter: 62 mm
Distance over bed: 300 mm approx.
Maximum working diameter: 600 mm
2 x steady rest and one extra chuck

Item number: 734626, Manufacturer: TOS, Model / Type: L27, Item available from: Immediately, Item condition: unchecked, Delivery terms: FCA Amieira, Marinha Grande, loaded on truck, Payment terms: 100% payment prior to collection, weight approx.: 3,800 kg, dimensions (l x w x h) approx.: 3,800 x 1,100 x 1,300 mm



SCHAUBLIN 125 Lathe

Center height: 125 mm
 Distance between centers: 500 mm
 Max.turning diameter over cross slide: 130 mm
 Max.turning diameter over the bed: 270 mm

Headstock
 Spindle speeds, stepless: 340 - 3000 Rpm
 With reduction gear: 68 - 3000 rpm
 Spindle nose: Camlock D1 - 3 "
 Pliers diameter: B 32 or B 32-UP
 Forceps passage: 24 mm
 Spindle bore: 28 mm

Tailstock
 Spindle cone: Morse 2
 Spindle travel: 100 mm

Feed gear
 Longitudinal and transverse feeds: 4 - 260 mm / min
 Feed motor: 0.25 kW / 4000 rpm
 Connection: 50 Hz / 400 volts

Tapping gear
 Metric pitches: 0.25 - 8 mm
 English gradients: 112 - 3 G / 1 "

Item number: 734625, Manufacturer: SCHAUBLIN, Model / Type: 125, Item available from: Immediately, Item condition: unchecked, Delivery terms: FCA Amieira, Marinha Grande, loaded on truck, Payment terms: 100% payment prior to collection, weight approx.: 980 kg, dimensions (l x w x h) approx.: 1,480 x 730 x 1,280 mm



SCHAUBLIN 13 Milling Machine

Table length 600 mm
 Table width 210 mm
 Longitudinal travel (X-axis) 260 mm
 Transversal travel (y axis) 150 mm
 Vertical travel (z axis) 310 mm
 Distance from vertical spindle to table 310 mm
 Distance from horizontal spindle to table 410 mm

Spindle speeds:
 Stepless: from 58 up to 2000 Rpm
 Taper in spindle 30 ISO

Feeds steps: 10
 Longitudinal from 12.0 mm/min up to 400 mm/min
 Vertical from 12.0 mm/min up to 400 mm/min

Rapid traverse:
 Longitudinal 1.2 m/min
 Vertical 1.2 m/min
 Voltage 50 Hz 3x 380 Volt
 Motor output 2.0 HP
 Total power required 3.0 HP

Item number: 734621, Manufacturer: SHAUBLIN, Model / Type: 13, Year of manufacture: 1965, Item available from: Immediately, Item condition: unchecked, Delivery terms: FCA Amieira, Marinha Grande, loaded on truck, Payment terms: 100% payment prior to collection, dimensions (l x w x h) approx.: 1,500 x 1,100 x 1,600 mm, weight approx.: 700 kg



AGIE FUTURA V MONDO 50 START EROSION MACHINE

Serial number: m50 star-002205

Item number: 734630, Manufacturer: AGIE, Model / Type: FUTURA V MONDO 50 START, Item available from: Immediately, Item condition: unchecked, Delivery terms: FCA Amieira, Marinha Grande, loaded on truck, Payment terms: 100% payment prior to collection, weight approx.: 1,865 kg, dimensions (l x w x h) approx.: 2,000 x 1,400 x 2,400 mm



TOS BB 08 Continuous Grinding Machine

Serial number: 111966
 Working area: 22 x 150 mm
 3 Spindle speed: 12 - 280 Rpm
 Load capacity: 15 kg
 Accuracy: 0.01 mm
 Read-out: standard
 Continuous grinding of smaller diameters enabled up to the length of 200 mm
 Grinding diameter: 1.5 mm

Item number: 734623, Manufacturer: TOS, Model / Type: BB 08, Year of manufacture: 1973, Item available from: Immediately, Item condition: unchecked, Delivery terms: FCA Amieira, Marinha Grande, loaded on truck, Payment terms: 100% payment prior to collection, dimensions (l x w x h) approx.: 1,300 x 1,200 x 1,760 mm, weight approx.: 600 kg



DECKEL Deckel FP1 G UNIVERSAL MILLING MACHINE

Serial Number: 2610
 Feed rate variable in 2 axes rapid traverse in 2 Axis
 Spindle stroke in X / Y / Z-axis: 300 / 160 / 340 mm
 3-axis - DRO Heidenhain active control and infinitely variable feed
 Power: 1.5 / 1.9 KW
 Coolant system
 Accessories and equipment, collets
 Operating instructions

Item number: 735850, Manufacturer: DECKEL, Model / Type: Deckel FP1 G, Year of manufacture: 1979, Item available from: Immediately, Item condition: unchecked, Delivery terms: FCA Amieira, Marinha Grande, loaded on truck, Payment terms: 100% payment prior to collection, dimensions (l x w x h) approx.: 1,200 x 900 x 1,740 mm, weight approx.: 800 kg



Manual Grinding/Profiling Machine

No Reserve Price

Item number: 685495, Manufacturer: unknown, Item available from: immediately, Item condition: unchecked, Delivery terms: FCA Trofa, loaded on truck, Payment terms: 100% payment prior to collection, dimensions (l x w x h) approx.: 1,110 x 1,100 x 1,300 mm, weight approx.: 350 kg



FRONIUS TransTig 4000 Job G/F TIG WELDING MACHINE

Serial number: 22145352

Item number: 764487, Manufacturer: FRONIUS, Model / Type: TransTig 4000 Job G/F, Item available from: AVAILABLE, Item condition: unchecked, Delivery terms: FCA, loaded on truck, Payment terms: 100% payment prior to collection, weight approx.: 85 kg, dimensions (l x w x h) approx.: 1,350 x 500 x 1,250 mm



GEBR. GLOOR AG GLOOROTRONIC OXYFUEL MACHINE BY READING

Serial Number: 1143

Item number: 764485, Manufacturer: GEBR. GLOOR AG, Model / Type: GLOOROTRONIC, Year of manufacture: 1992, Item available from: AVAILABLE, Item condition: unchecked, Delivery terms: FCA, loaded on truck, Payment terms: 100% payment prior to collection, dimensions (l x w x h) approx.: 1,500 x 1,500 x 1,500 mm, weight approx.: 300 kg



TAG PREP 2 PIPE BEVELLING MACHINE

Serial Number: 20634

Item number: 764484, Manufacturer: TAG, Model / Type: PREP 2, Item available from: AVAILABLE, Item condition: unchecked, Delivery terms: FCA, loaded on truck, Payment terms: 100% payment prior to collection, dimensions (l x w x h) approx.: 450 x 350 x 150 mm, weight approx.: 25 kg



TAG PREP 2 PIPE BEVELLING MACHINE

Serial Number: 20633

Item number: 764483, Manufacturer: TAG, Model / Type: PREP 2, Item available from: AVAILABLE, Item condition: unchecked, Delivery terms: FCA, loaded on truck, Payment terms: 100% payment prior to collection, dimensions (l x w x h) approx.: 450 x 350 x 150 mm, weight approx.: 25 kg



TAG PREP 2 PIPE BEVELLING MACHINE

Serial Number: 20606

Item number: 764486, Manufacturer: TAG, Model / Type: PREP 2, Item available from: AVAILABLE, Item condition: unchecked, Delivery terms: FCA, loaded on truck, Payment terms: 100% payment prior to collection, dimensions (l x w x h) approx.: 450 x 350 x 150 mm, weight approx.: 25 kg



CINCINATI SABRE-750 ERH Vertical Machining Center

Controller: Acramatic 8505X
 Serial Number: 7029-A00-94-0926
 Travels:
 X-780 mm
 Y-520 mm
 Z-580 mm
 Made in England

Item number: 684784, Manufacturer: CINCINATI, Model / Type: SABRE-750 ERH, Year of manufacture: 1994, Item available from: immediately, Item condition: unchecked, Delivery terms: FCA Amieira, Marinha Grande, loaded on truck, Payment terms: 100% payment prior to collection, weight approx.: 4,500 kg, dimensions (l x w x h) approx.: 1,900 x 2,200 x 2,500 mm



GBC 7 x PIPE BEVELLING MACHINE

Item number: 764482, Manufacturer: GBC, Item available from: AVAILABLE, Item condition: unchecked, Delivery terms: FCA, loaded on truck, Payment terms: 100% payment prior to collection, dimensions (l x w x h) approx.: 450 x 450 x 250 mm, weight approx.: 35 kg



ELB SW3HA Hydraulic, Electric and Manual Surface Grinder

Hydraulic, Electric and Manual Grinding Machine
 Made in Germany
 Table Dimensions: 300 x 150 mm
 X: 350 mm
 Y: 150 mm
 Z: 200 mm
 Serial Number: 37050662

Item number: 684796, Manufacturer: ELB, Model / Type: SW3HA, Year of manufacture: 1980, Item available from: immediately, Item condition: unchecked, Delivery terms: FCA, loaded on truck, Payment terms: 100% payment prior to collection, weight approx.: 700 kg, dimensions (l x w x h) approx.: 900 x 100 x 1,800 mm



LAGUN FU2 Knee Type Milling Machine

Working Table Dimensions: 1300 mm x 280 mm
 X: 600 mm
 Y: 280 mm
 Z: 450 mm
 Angled Universal Head with Slot
 Fast forward
 water engine
 Water tank
 Low Speeds: 28 rpm to 180 rpm
 High Speeds: 224 rpm to 1400 rpm
 Feedrates of the Axes: 10 to 452

Item number: 684804, Manufacturer: LAGUN, Model / Type: FU2, Year of manufacture: 1989, Item available from: immediately, Item condition: unchecked, Delivery terms: FCA Amieira, Marinha Grande, loaded on truck, Payment terms: 100% payment prior to collection, weight approx.: 2,000 kg, dimensions (l x w x h) approx.: 1,700 x 1,600 x 1,775 mm



MAS KOVOSVIT MAS MCV 750 CNC Machining Center

Control: Heidenhain 410
 Working Table Dimensions: 1000mm x 500mm
 X: 750 mm
 Y: 500 mm
 Z: 500 mm
 ISO40
 Tool Carousel Capacity: 20 Tools
 Made in Czech Republic
 CE Certificate

Item number: 684808, Manufacturer: MAS, Model / Type: KOVOSVIT MAS MCV 750, Year of manufacture: 1996, Item available from: immediately, Item condition: unchecked, Delivery terms: FCA Amieira, Marinha Grande, loaded on truck, Payment terms: 100% payment prior to collection, weight approx.: 4,000 kg, dimensions (l x w x h) approx.: 2,300 x 2,000 x 2,100 mm



GUILIN X5746-2 Universal Milling Machine

Working Table Dimensions: 2000mm x 450mm
 X: 1500 mm
 Y: 700 mm
 Z: 480 mm
 With fast and slow feeds
 Maximum Speed: 2050 rpm
 Low Speed: 50 rpm
 Maximum Loading Table: 1000 Kg
 Angular Head in both directions Huron
 Cone: ISO50

Item number: 684809, Manufacturer: GUILIN, Model / Type: X5746-2, Year of manufacture: 1997, Item available from: immediately, Item condition: unchecked, Delivery terms: FCA Amieira, Marinha Grande, loaded on truck, Payment terms: 100% payment prior to collection, dimensions (l x w x h) approx.: 2,200 x 2,000 x 2,000 mm, weight approx.: 4,000 kg



MH600B Milling Table

Maho Milling Table
 Working Table Dimensions: 1000 mm x 400 mm
 6 Horizontal T-Slots
 T-Slots of 15 mm
 Hole-to-Hole Adaptation: 315 mm

Item number: 684813, Manufacturer: MAHO, Model / Type: MH600B, Item available from: immediately, Item condition: unchecked, Delivery terms: FCA Amieira, Marinha Grande, loaded on truck, Payment terms: 100% payment prior to collection, weight approx.: 100 kg, dimensions (l x w x h) approx.: 1,000 x 400 x 270 mm



HURCO BMC30/M CNC Machining Center

X: 1100 mm
 Y: 500 mm
 Z: 500 mm
 Controller: Hurco Ultimac 3
 Serial Number: 9507004A Hours of Work: 51248 h
 Hurco Europe Limited

Item number: 684825, Manufacturer: HURCO, Model / Type: BMC30/M, Year of manufacture: 1994, Item available from: immediately, Item condition: unchecked, Delivery terms: FCA Amieira, Marinha Grande, loaded on truck, Payment terms: 100% payment prior to collection, weight approx.: 4,500 kg, dimensions (l x w x h) approx.: 3,100 x 2,400 x 2,300 mm



TOS FN32 Toolroom Mill

Table size 300 x 700 mm
 Travels X / Y / Z: 500 / 285 / 430 mm
 Spindle SK40
 Speeds from 40 to 2000 Rpm
 Feed rate 8-400 mm / min
 Speed: 600 mm / min
 High-speed head max 10,000 Rpm
 2-axis Digital read out
 Clamping vice included

Item number: 710083, Manufacturer: TOS, Model / Type: FN32, Year of manufacture: 1987, Item available from: immediately, Item condition: unchecked, Delivery terms: FCA Amieira, Marinha Grande, loaded on truck, Payment terms: 100% payment prior to collection, weight approx.: 1,850 kg, dimensions (l x w x h) approx.: 1,340 x 1,100 x 1,550 mm



UNIMILL F-20 Knee Type Milling Machine

Table size: 1370 x 295 mm
 X-axis travel: 900 mm
 Y-axis travel: 300 mm
 Z-axis travel: 420 mm
 Spindle speeds: 31.5 - 1400 Rpm
 Spindle cone ISO 50
 Equipped with: Head Rapid, Cooling water system, etc.

Item number: 710084, Manufacturer: UNIMILL, Model / Type: F-20, Year of manufacture: 1983, Item available from: immediately, Item condition: unchecked, Delivery terms: FCA Amieira, Marinha Grande, loaded on truck, Payment terms: 100% payment prior to collection, weight approx.: 2,250 kg, dimensions (l x w x h) approx.: 1,750 x 1,300 x 1,850 mm



BAYKAL APHS 3112 x 240 COMPACT Press Brake

Press brake
 Model APHS 3112 x 240
 Serial number: 19099
 Capacity: 240 Tn
 Foldable length: 3100 mm
 Beam stroke: 260 mm
 Backgauge X stroke: 700 mm
 Distance between columns: 2550 mm
 Table width: 90 mm
 Approximate speed: 90 mm/s
 Working speed: 7.6 mm/s
 Return speed: 80 mm/s
 Number of CNC controlled axes: 3
 CNC Model
 Motor power: 18.5 kW
 Tools included

Item number: 710090, Manufacturer: BAYKAL, Model / Type: APHS 3112 x 240 COMPACT, Year of manufacture: 2013, Item available from: immediately, Item condition: unchecked, Delivery terms: FCA Amieira, Marinha Grande, loaded on truck, Payment terms: 100% payment prior to collection, weight approx.: 11,000 kg, dimensions (l x w x h) approx.: 3,600 x 1,800 x 2,800 mm



C.V. INSTRUMENTS LTD ESEWAY NDVRB - M DUROMETER - ESEWAY NDVRB - M

Digital micro hardness tester
Indenter types

Item number: 764301, Manufacturer: C.V. INSTRUMENTS LTD, Model / Type: ESEWAY NDVRB - M, Year of manufacture: 1997, Item available from: AVAILABLE, Item condition: unchecked, Delivery terms: FCA Trofa, loaded on truck, Payment terms: 100% payment prior to collection, dimensions (l x w x h) approx.: 400 x 400 x 200 mm, weight approx.: 60 kg



Tool Cabinet with Content

Tool cabinet for milling machines or boring mill machines, etc
Cones ISO 50: 37 uts.
Content included

Item number: 710092, Manufacturer: unknown, Item available from: immediately, Item condition: unchecked, Delivery terms: FCA Amieira, Marinha Grande, loaded on truck, Payment terms: 100% payment prior to collection, weight approx.: 200 kg, dimensions (l x w x h) approx.: 1,250 x 450 x 1,780 mm



WELDING ALLOYS LTD WAP 600 Filling Machine with DEMAG 500 Kg Crane

Item number: 758408, Manufacturer: WELDING ALLOYS LTD, Model / Type: WAP 600, Item available from: Immediately, Item condition: unchecked, Delivery terms: FCA, loaded on truck, Payment terms: 100% payment prior to collection, dimensions (l x w x h) approx.: 3,000 x 2,500 x 3,000 mm, weight approx.: 400 kg



RAY RG 202K Milling Head

High Rotation milling head
Type: RG 202K
Nr. 2.18.17.713
Volt: -260 Hz 50 br> VA: 800
Working speed: from 15.000 up to 60.000 Rpm

Item number: 710897, Manufacturer: RAY, Model / Type: RG 202K, Year of manufacture: 2008, Item available from: immediately, Item condition: unchecked, Delivery terms: FCA Amieira, Marinha Grande, loaded on truck, Payment terms: 100% payment prior to collection, weight approx.: 60 kg, dimensions (l x w x h) approx.: 860 x 660 x 370 mm



MIKRON WPC1 Robot Pallet Changer

Serial number: 621
Automated warehouse with capacity for 48 Erowa bases
Electrode machining system
To work on a CNC with Erowa base
Attaches to a CNC
Belongs to a Micron but works with other CNC

Item number: 734105, Manufacturer: MIKRON, Model / Type: WPC1, Year of manufacture: 2007, Item available from: Immediately, Item condition: unchecked, Delivery terms: FCA Leiria PORTUGA, loaded on truck, Payment terms: 100% payment prior to collection, dimensions (l x w x h) approx.: 1,600 x 1,210 x 800 mm, weight approx.: 800 kg



ROFIN SINAR LASER POWER LINE F-30 LASER ENGRAVING MACHINE

Item number: 764322, Manufacturer: ROFIN-SINAR LASER, Model / Type: POWER LINE F-30, Year of manufacture: 2011, Item available from: AVAILABLE, Item condition: unchecked, Delivery terms: FCA Trofa, loaded on truck, Payment terms: 100% payment prior to collection, dimensions (l x w x h) approx.: 600 x 200 x 300 mm, weight approx.: 70 kg



LEINHAAS Control Units for Hydraulic Presses Line

2x PLC monitors
2x CPU machine control
Multiple input and output cards
2x siemens S5 PLC
Feeder controller
All items are part of the control units of two LEINHAAS hydraulic presses
It is all the electronic part of control of operation of the presses
All the articles were disassembled from the machine in full operation

Item number: 707666, Manufacturer: LEINHAAS, Year of manufacture: 1996, Item available from: immediately, Item condition: unchecked, Delivery terms: FCA São Francisco - Alcochete, free on truck, Payment terms: 100% payment prior to collection, dimensions (l x w x h) approx.: 1,200 x 800 x 800 mm, weight approx.: 100 kg



ADIRA GHS-1030 GUILHOTINE

10mm cut
4021h

Item number: 766755, Manufacturer: ADIRA, Model / Type: GHS-1030, Year of manufacture: 1999, Item available from: AVAILABLE, Item condition: unchecked, Delivery terms: FCA, loaded on truck, Payment terms: 100% payment prior to collection, weight approx.: 5,000 kg, dimensions (l x w x h) approx.: 3,000 x 1,800 x 1,800 mm



KIHEUNG KNC - U800 Bed Type Milling Machine

Serial number 5080390
Max. spindle speed: 3000 Rpm
Table length 2300 mm
Table width 800 mm
Max load on table 3500 kg
Spindle taper ISO 50
X-axis travel: 1900 mm
Y-axis travel: 800 mm
Z-axis travel: 800 mm
CNC Heidenhain 426
CE Standards

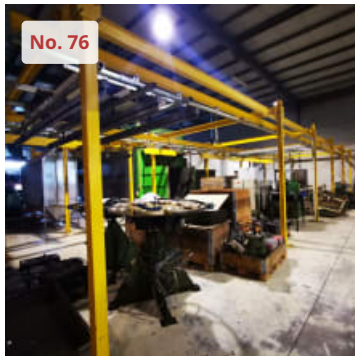
Item number: 707434, Manufacturer: KIHEUNG, Model / Type: KNC - U800, Year of manufacture: 1998, Item available from: immediately, Item condition: unchecked, Delivery terms: FCA Agueda, loaded on truck, Payment terms: 100% payment prior to collection, weight approx.: 11,500 kg, dimensions (l x w x h) approx.: 4,000 x 2,700 x 2,850 mm



TOS FGSH 40 Bed Type Milling Machine

Serial number FGSH 40-411060002
 Working table length: 1400 mm
 Working table width: 400 mm
 Maximum rotary speed of the vertical spindle: 1800 Rpm
 Travel length X-axis: 1000 mm
 Travel length Y-axis: 400 mm
 Travel length Z-axis : 450 mm
 Power of the spindle drive: 7.5 kW
 HEIDENHAIN Digital read out

Item number: 707435, Manufacturer: TOS, Model / Type: FGSH 40, Year of manufacture: 1985,
 Item available from: immediately, Item condition: unchecked, Delivery terms: FCA Agueda, free on
 truck, Payment terms: 100% payment prior to collection, weight approx.: 4,000 kg, dimensions (l x
 w x h) approx.: 2,500 x 2,500 x 2,200 mm



Manual Coating Installation with Electrostatic Coating Cabin

Manual coating installation with electrostatic coating cabin

1 - GENERAL SPECIFICATIONS:

· Workpiece Dimensions:
 Max. Height 1.800 mm
 Max. Width 1.500 mm
 Max. Length 1.800 mm
 Max. Thickness 7 mm
 Max. weight (supported in rack) 350 Kg
 · Electric Consumption:

Consumption (machine) (50 Hz) 400V+N+T (230V+T)
 Metallic wash house 8 kW
 Complete painting booth 25 kW
 Polymerization Oven 6 kW
 Total consumption 39 kW

Fuel Supply LPG
 Polymerization 150.500 kcal/h
 Total Consumption 602.000 kcal/h

2 - EQUIPMENT DESCRIPTION

· CABIN WITH PRODUCT RECOVERY TREATMENT SYSTEM:

Useful dimensions: 4000 x 3500 x 4500 mm (H x W x D);
 Clearance gauge: 2000 x 2200 mm (W x H);
 Construction in isorighe boards ref. 1000/40BG-BG with 40 mm insulation, colour Ral 9006,

duly structured with sheet metal gutter.

Structured with ST 37 steel sheet rails.

6 Lamps 3 x 36W

An exhaust dome, equipped with a helicoidal fan, mod. HPX-56-4T-1.5

Equipped with phosphating machine treatment system with product recovery

The high pressure washer is used in manual treatment systems (of parts to be treated).
 Its purpose is to degrease / phosphate the parts to paint.

Principle of Operation: this machine should make a dilution of 1:2 and aspiration of the
 solution efficiently. The water diluted with the solution is sucked into a tank, and
 manually launched by a lance directly on the parts to to degrease/phosphatize, during a

necessary time. After this operation (Degreasing/Fosphatizing), the product's suction is
 switched off and only water is washed, at room temperature.

The product recommended by Chemetall for preparing the solution to be used is GARDOBOND
 KHS at 65
 g/litre (54 ml/litre).

Temperature: 60 - 80 °C

Time: Variable, depending on the type of workpiece and its contamination!

The analysis value at the exit of the lance should be Total Acidity = 7.5 - 8.5 points.

NOTE: The product for preparing the solution, draining and treating water from washing,
 electrical connections electrical connections, water and fuel (diesel), to be paid by the

CLIENT. HDS 8/18 - 4 C Washer

Three-phase 4-pole hot water high pressure washer, water-cooled electric motor, with storage compartment storage compartment, Eco mode, 1-button operation, integrated tanks, Easy Press, continuous adjustment of pressure and water flow, etc.

Accessories supplied with the machine:

- Gun with soft grip coating
- High pressure hose 10 m DN 6, 250 bar
- Lance 600 mm
- Milling nozzle
- SDS system

- Anti-creasing system (AVS)
- Pressure control switch
- Integrated detergent and fuel tanks
- Servo Control (pressure control)

Current type Ph/V/Hz 3/400/50

Water flow rate (l/h) 300 - 800

Working pressure (bar/MPa) 30 - 180 / 3 - 18

Max. working temperature (°C) (°C) 80 - 155

Power (kW) 6

Diesel consumption (kg/h) 5

Fuel tank (l) 15

Weight (kg) 112

Measures (L x W x H) (mm) 1060 x 650 x 920

Detergent tank (l) 10

DESCRIPTION: Compact class high performance three-phase hot water high-pressure washer

with 4-pole motor water-cooled motor.

The Eco mode ensures an economical and ecological use.

Easy to use thanks to the one-button operation.

Excellent mobility thanks to large wheels and steering roller.

Chassis robust chassis with integrated detergent and fuel tanks.

Ergonomic Easy Press gun with Softgrip and Continuous pressure and flow control in the gun.

Practical storage compartments for accessories, nozzles, etc.

· POWDER SPRAY BOOTH, WITH INCORPORATED FILTRATION (LOOSE POWDER):

Useful inside dimensions: 3000 x 3000 x 4500 mm (Height x Width x Length).

Clearance gauge: 2100 x 2000 mm (height x width)

Construction in 40 mm insulated polyurethane panel, duly structured with a steel profile.

Interior lighting system with LED reinforcement.

Composed of a cartridge filtration system, with a capacity of 12 000 m³/h,!

A suction speed of about 0.50 metres per minute is calculated on the cabin's entry gauge.

The automatic suction and filtering system is a automatic dedusting by filter cartridges with high highly efficient from an economic and environmental point of view. With a retention performance that eliminates the conventional extraction to the exterior, allowing total recycling of the air inside the building.

The careful construction of INTELLYSYS, using pressed, bent and painted panels, means that they are in machines of high robustness. The filtering cartridges are made of top quality "fabric", performing quality, performing filtration operations efficiently and long-lasting. The cartridges are assembled on galvanized or painted galvanised or painted metal cages, to increase resistance and resistance and durability.

Especially suitable for medium and fine dust filtration, maintains a high filtration efficiency and a perfect cleaning of the bottom of the filtering structure, thanks to the continuous operation of the Cleaning System.

Electric panel with electronic variable speed drive

Functional Characteristics:

Flow rate 12.000 [m³/h] - 12.000 - [m³/h]

Nº of solenoid valves - 4

Floor area - 2080 x 1160 x 4130 mm - [mm (h)]

Number of cartridges - 8 pcs x(Ø324x1000) polypropylene

Fan

Type - DCR 501/B

Flow rate - 12,000 [m³/h]

Total Pressure - 347 [mm W.C.] Speed

Rotational speed - 2,930 [R.P.M] Installed power

Installed power - 18.5 kW, 2-pole

Voltage - 400 / 690 [Volt]

Frequency - 50 [Hz].

· MANUAL APPLICATION EQUIPMENT WAGNER POWDER:

2 WAGNER SPRINT application equipment

AIRFLUID, composed of (each)

- 1 PEM X1 latest generation gun

- 1 Trolley with vibration table

- 1 Generator EPG - SprintX

· GAS STATIC POLYMERIZATION OVEN:

Robust construction in galvanized sheet in thicknesses of thickness of 1.5, 2.5, and 3 mm;
Construction in panels "sandwich" of 150 mm, built in Rock Wool core, density of 120 kg/m³
high thermal insulation, painted exterior colour "SILVER METALIC" and interior face in
galvanised sheet metal, duly structured and reinforced. This guarantees a minimum

differential between the temperature of the exterior wall of the and the ambient
temperature;

Two half Sliding Doors on the top of the Oven.

1 Slot for overhead gutters (not included)

Heating through ONE Burner with direct flame burner, radiant tube, Mod.BPR150 MB

· Sensor Element: PT100 probe;

· Maximum Thermal Power: 175kW;

Electrical Control, Protection and Command Panel.

Maximum temperature: 250 °C;

Air recirculation caused by 3 centrifugal fans equipped with a 2 Cv motor, fans type CMSH

1445 -4T - 2CV with an operating point of 3 500 m³/h at 60mmH₂O, each. We have designed
around 362 re-circulations/hour, which for an internal volume of approx. 29 m³,
constitutes a circulating flow of approx.10,500 m³/h.

Anti-blocking safety system inside;

Electric control panel, protection and command with temperature indication through digital

controller, heating, regime and ventilation signaling, general cut-off switch, protection
of the motors with circuit breakers, working timer, end of operation buzzer and active
safety circuit, (CE)

· OVERHEAD RAIL CONVEYOR:

NIKO overhead rail and accessories

Air rail in profile, 3.5mm thick, with yellow galvanization. Its conical design, allows
the correct alignment of the trolleys and reduces the possibility of dust accumulation.
This guarantees the proper functioning of the trolleys and the long life of the profile.
This type of profile requires only 1-4% strength of the total weight of the total weight
to be handled.

Maximum load (350 Kg / rack)

9 Piece holder frames, built in rectangular rectangular tubular profile and T-bar,
perforated throughout dimension (4,000 mm), for the placement of hooks.

Equipped with 2 high temperature trolleys, each for to be moved on a rail each.

· FLUE GAS EXTRACTION DUCTS:

Flue gas extraction ducts made of INOX sheet in INOX plate, others in galvanized spiral
pipe.

Piping construction in accordance with Decree-Law No. 78/2004 of 3 April, Ordinance

263/2005 and Rectification 38/2005 and standard NP 2167 of 1992;

Diameters in accordance with the machine outputs;

Fixing through unions or embedding of easy replacement easy replacement;

Roof sealing by plates, according to the roof tile, with the tile, with sealing by mastik
and aluminium tape aluminium tape;

Joints by inlaying and insulated by aluminium tape aluminium tape;

Trolley carriage, bridge crane type, cross travel, with mechanical interlocking system and
anti-fall safety device for the frame. It comprises the trolley carriage, multiple
crossing lines, locks and an operator's lever.

Item number: 708087, Manufacturer: INTEELLYSYS, Model / Type: EE 004 17, Year of manufacture:
2017, Item available from: immediately, Item condition: unchecked, Delivery terms: FCA Brito -
Guimarães, loaded on truck, Payment terms: 100% payment prior to collection, dimensions (l x w x
h) approx.: 19,000 x 12,000 x 3,500 mm, weight approx.: 8,500 kg



PRESSIX 100 CNR 4 PRESS

Number of Hits per min: 65 C/min
 Maximum number of shots: 22 C/min
 Clutch pressure: 4/5,5 bar
 Maximum stopping time: 0,195 s
 Safety distance: 321 mm
 Energy Strokes nom: 8493 KJ
 Min/max travel: 10 / 130 mm
 Carriage adjustment: 100 mm
 PMI High adjustment: 370 mm
 Max. pull out stroke: 55 mm
 Table dimensions (H,W,D,L): 68 / 660 / 950 mm
 Slide base dimensions (D,W,L): 450 / 540 mm
 Coupling diameter: 60 mm

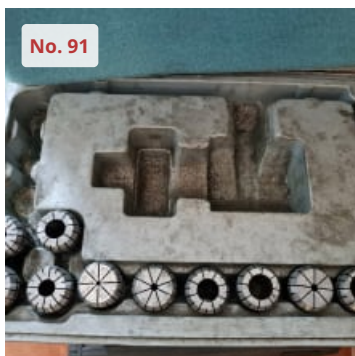
Item number: 765129, Manufacturer: PRESSIX, Model / Type: 100 CNR 4, Year of manufacture: 1999, Item available from: AVAILABLE, Item condition: unchecked, Delivery terms: FCA Agueda, loaded on truck, Payment terms: 100% payment prior to collection, weight approx.: 7000 kg, dimensions (l x w x h) approx.: 1,300 x 1,800 x 3,200 mm



RÖHM 116H MK6 Revolving Tailstock Live Center

For counter-rolling work on lathes and grinding machines
 With maximum concentricity deviation of 0.005 mm

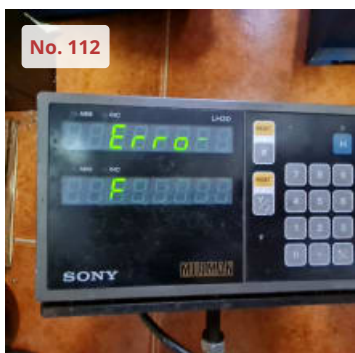
Item number: 710834, Manufacturer: RÖHM, Model / Type: 116H MK6, Item available from: immediately, Item condition: unchecked, Delivery terms: FCA Amieira, Marinha Grande, loaded on truck, Payment terms: 100% payment prior to collection, weight approx.: 40 kg, dimensions (l x w x h) approx.: 200 x 150 x 180 mm



VERTEX Collets

15 x Collets ER32

Item number: 710884, Manufacturer: VERTEX, Item available from: immediately, Item condition: unchecked, Delivery terms: EXW Amieira, Marinha Grande, ex foundation, unpackaged, Payment terms: 100% payment prior to collection, weight approx.: 3 kg, dimensions (l x w x h) approx.: 350 x 200 x 120 mm



SONY MILLMAN Digital Readout

Digital read out for milling machine or lathes
 Model: LH30-2T01
 2 axis
 Without drivers

Item number: 710905, Manufacturer: SONY, Model / Type: MILLMAN, Item available from: immediately, Item condition: unchecked, Delivery terms: FCA Amieira, Marinha Grande, loaded on truck, Payment terms: 100% payment prior to collection, dimensions (l x w x h) approx.: 150 x 100 x 150 mm, weight approx.: 5 kg



BRAILLON Magnetic Table

Table size: 320 x 170 mm
Amp: 1.5
Voltage: 230

Item number: 710907, Manufacturer: BRAILLON, Item available from: immediately, Item condition: unchecked, Delivery terms: FCA Amieira, Marinha Grande, loaded on truck, Payment terms: 100% payment prior to collection, dimensions (l x w x h) approx.: 320 x 170 x 100 mm, weight approx.: 15 kg



Cabinet with Tools

Cabinet with tools
Tools included
For TOS FN32 milling machine

Item number: 710909, Manufacturer: unknown, Item available from: immediately, Item condition: unchecked, Delivery terms: FCA Amieira, Marinha Grande, loaded on truck, Payment terms: 100% payment prior to collection, dimensions (l x w x h) approx.: 1,500 x 800 x 1,600 mm, weight approx.: 1,400 kg



WALTER Heli-Power HMC 400 CNC PROFILER GRINDING MACHINE

Walter Helitronic Power HMC-400 Equipped With:
5 AXIS CNC TOOL & CUTTER GRINDER
Programs include: Drill, End Mill and Form Tool
Double Side Grinding spindle
10,500 RPM Precision Spindle
Windows based Walter cnc Control
CBN Diamond Wheel installed
Probing system
Coolant and Filtration System (small tanque)
Full Enclosure
WorkLight

Walter Helitronic Power HMC-400 Specifications:
Capacity of Workpiece Dia.: 0.04" – 3.9"
Max. Peripheral Grinding: 10"
Max. End Face Grinding: 7.3"

Max. X Axis Travel: 13.8"
Max. Y Axis Travel: 7.9"
Max. Z Axis Travel: 18.5"
A Axis: Infinite
C Axis Rotary: +/- 200° (0.001°)

Grinding Spindle Motor: 16 hp
Grinding Wheel Type: Diamond or CBN Grinding
Wheel Dia. Max.: 5.9"
Grinding Wheel Speed: 500 to 10,500 RPM

Item number: 764303, Manufacturer: WALTER, Model / Type: Heli-Power HMC 400, Year of manufacture: 1997, Item available from: AVAILABLE, Item condition: unchecked, Delivery terms: FCA Trofa, loaded on truck, Payment terms: 100% payment prior to collection, control: WALTER HMC 400 WWM, weight approx.: 3,500 kg, dimensions (l x w x h) approx.: 2,300 x 2,400 x 2,350 mm



SANDVIK COROMANT Modul Mill

Modul-Mill New R 285.2 200
 Tool cutting edge angle: 75 deg
 Cutting diameter: 200 mm
 Maximum cutting diameter: 208 mm
 Maximum cutting depth: 12 mm
 Arbor -ISO 6462 -C (4 bolts) -metric: 60S
 Right hand
 Maximum working speed: 3.700 Rpm

Item number: 710911, Manufacturer: SANDVIK, Model / Type: COROMANT, Item available from: immediately, Item condition: unchecked, Delivery terms: FCA Amieira, Marinha Grande, loaded on truck, Payment terms: 100% payment prior to collection, dimensions (l x w x h) approx.: 250 x 250 x 100 mm, weight approx.: 30 kg



DECKEL FP3LB Milling Machine

Toolroom Milling Machine Deckel FP3LB
 Serial Number 2271
 TECHNICAL SPECIFICATIONS
 Digital display: 3-axis digital display

Travel:
 X axis: approx. 800 mm
 Y axis: approx. 300 mm
 Z axis: approx. 400 mm
 Table surface area: approx. 1000 x 520 mm

Spindle:
 Speed range: approx. 40 - 2000 rpm
 Tool holder: ISO 40
 Drive power: approx. 3.0 kW
 Tool clamping: manual

Feeds & rapid traverse: in all 3 axes
 Feed range: approx. 10 - 500 mm / min
 Rapid traverse: approx. 1.5 m / min

accessories

- Vertical- & Horizontal - milling device
- Coolant device
- Angle milling head with drilling quill (stroke: approx. 100 mm)
- Complete machine documentation
- Central lubrication
- Various collets tools

Item number: 764455, Manufacturer: DECKEL, Model / Type: FP3LB, Year of manufacture: 1976, Item available from: AVAILABLE, Item condition: unchecked, Delivery terms: FCA Amieira, Marinha Grande, loaded on truck, Payment terms: 100% payment prior to collection, dimensions (l x w x h) approx.: 2,000 x 1,900 x 1,900 mm, weight approx.: 2,400 kg



KNUTH RSM 1500 Cylindrical Grinding Machine

Center height: 180mm
 GRinding length: 1500mm
 Grinding diameter: 8mm – 320mm

Internal grinding depth 125 mm
 with fixed support 60 mm
 Grinding inner diameter with support 35mm – 100mm
 Inner diameter of unsupported grinding 30mm – 100mm
 Part weight between centers (max.) 150kg
 Wheel advance (min.) 0.0025mm
 Bushing diameter 200 mm

Table swivel range (max.) -3° / +6°
Speed: 35m/s
Working spindle speeds: 50Hz: 25-220 1/min
Grinding head stroke 250 mm
Infinitely variable feed 0.1 m/min – 4 m/min
Hand wheel rotation feed, X axis 1mm
X-axis scale division feed 0.0025mm

PRECISION

Termination deviation 0.003 mm
Cylindrical deviation 0.01 mm
Roughness =0.32 µm Ra

HEAD

4MT spindle workpiece
Operating head swivel range 0 degrees – 45 degrees

Grinding Head
Spindle speed 0 1/min – 1670 1/min
Internal spindle speed 10000 1/min
Grinding head rotation range (right + left) 30°

HEAD IN MOVEMENT

Tailstock taper 4MT
Tailstock hollow shaft travel 30 mm

DRIVE CAPACITY

Motor Rating – Grinder / Hydraulic Pump 5.5 / 0.75 kW
Internal grinding motor rating 1.1 kW
Engine rating – head/cooling pump 1.5 / 0.125 kW

MEASUREMENTS AND WEIGHTS

Overall dimensions (length x width x height) 4.61 m x 1.81 m x 1.52 m
Dimensions of the grinding wheels 400mm x 50mm x 203mm

Wheel dimensions, internal grinding (max.) (length x latitude) 50 mm x 25 mm x 13 mm
Wheel dimensions, internal grinding (min) (length x latitude) 17 mm x 20 mm x 6 mm

Large machine platform in heavy-duty design accommodates parts up to 2000mm in length and diameters up to 320 mm

Wide, precision ground slides ensure maximum accuracy across the entire length of the workpiece and accommodate heavy workpiece weights
The table has large dimensions and rotates in two directions – table movements through a hand wheel or automatically through a linear hydraulic feed
Robust feed valve allows very precise microfeed control on the X axis, including user

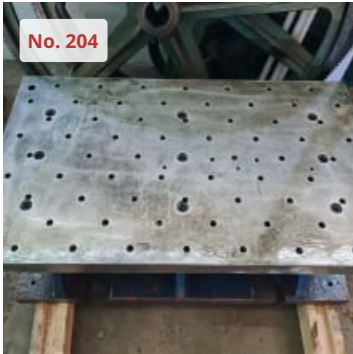
adjustable dwell time at end of table longitudinal travel
Hydraulic spool power simplifies exact X-axis location limited by an adjustable zero stop
The grinding spindle features hydrostatic bearings and offers the highest precision and surface quality, along with excellent tool life and rigidity.
Powerful grinding spindle motor is designed for continuous operation

Strong shaft head rotates 30° left and right; work spindle head rotates 45°
Built-in rectifier included
Fast forward integrated on the Z axis with manual return

Internal Grinding Equipment Support

Closed support
3-jaw chuck Ø 200 mm
Refrigeration system
Balancing wheel
Balancing Station Balancing Chuck
Grinding wheels
Phalanx
Central point
Front and rear splash guard
Operation and maintenance manual

Item number: 764461, Manufacturer: KNUTH, Model / Type: RSM 1500, Year of manufacture: 1998, Item available from: AVAILABLE, Item condition: unchecked, Delivery terms: FCA Amieira, Marinha Grande, loaded on truck, Payment terms: 100% payment prior to collection, weight approx.: 4,300 kg, dimensions (l x w x h) approx.: 460 x 1,800 x 1,520 mm



Working Table

Working table

Table size: 1000 x 600 x 360 mm

Suitable for milling machines, boring machines, CNC machining centre, Radial drilling machines, etc

Item number: 710914, Manufacturer: unknown, Item available from: immediately, Item condition: unchecked, Delivery terms: FCA Amieira, Marinha Grande, loaded on truck, Payment terms: 100% payment prior to collection, dimensions (l x w x h) approx.: 1,100 x 650 x 400 mm, weight approx.: 1,200 kg



Lot of Milling Tools

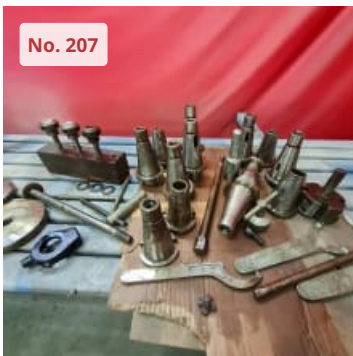
Lot of milling tools

7 uts

ISO 30 Cones

Different models, brands and sizes

Item number: 710915, Manufacturer: unknown, Item available from: immediately, Item condition: unchecked, Delivery terms: FCA Amieira, Marinha Grande, loaded on truck, Payment terms: 100% payment prior to collection, dimensions (l x w x h) approx.: 350 x 100 x 150 mm, weight approx.: 20 kg



Lot of Milling Tools

17x Tools for milling machines and lathes

Item number: 710917, Manufacturer: unknown, Item available from: immediately, Item condition: unchecked, Delivery terms: FCA Amieira, Marinha Grande, loaded on truck, Payment terms: 100% payment prior to collection, dimensions (l x w x h) approx.: 330 x 300 x 280 mm, weight approx.: 70 kg



BOSCH 220 Drill

Drill

Serial number: 0 601 174 048

220 V

Total power: 520 W

Working speed:

· Ø 10 mm: 710 Rpm

· Ø 16 mm: 320 mm

Item number: 710921, Manufacturer: BOSCH, Model / Type: 220, Item available from: immediately, Item condition: unchecked, Delivery terms: FCA Amieira, Marinha Grande, loaded on truck, Payment terms: 100% payment prior to collection, dimensions (l x w x h) approx.: 600 x 250 x 150 mm, weight approx.: 40 kg



Lathe Face Plate

Lathe face plate
Plate diameter: 760 mm
Inner diameter approx.: 80 mm

Item number: 710923, Manufacturer: unknown, Item available from: immediately, Item condition: unchecked, Delivery terms: FCA Amieira, Marinha Grande, loaded on truck, Payment terms: 100% payment prior to collection, dimensions (l x w x h) approx.: 800 x 800 x 200 mm, weight approx.: 120 kg



Lathe Face Plate

Lathe face plate
Plate diameter: 640 mm
Inner diameter approx.: 130 mm

Item number: 710924, Manufacturer: unknown, Item available from: immediately, Item condition: unchecked, Delivery terms: FCA Amieira, Marinha Grande, loaded on truck, Payment terms: 100% payment prior to collection, dimensions (l x w x h) approx.: 700 x 700 x 250 mm, weight approx.: 100 kg



HW50-32 Collet Chuck with Collets

Collet chuck with collets
Cone: ISO 50
With 30 collets prox.

Item number: 710928, Manufacturer: unknown, Model / Type: HW50-32, Item available from: immediately, Item condition: unchecked, Delivery terms: FCA Amieira, Marinha Grande, loaded on truck, Payment terms: 100% payment prior to collection, dimensions (l x w x h) approx.: 400 x 300 x 150 mm, weight approx.: 25 kg



LOT OF TWO PALLETS OF SERRA WOOD

Item number: 764436, Item available from: AVAILABLE, Item condition: never used/new, Delivery terms: FCA Trofa, loaded on truck, Payment terms: 100% payment prior to collection, dimensions (l x w x h) approx.: 2,000 x 2,400 x 1,500 mm, weight approx.: 100 kg



BERTOCCO MH 40 Chiller

BERTOCCO Chiller
380v
50hz
Serial Number: 0359A0791

Item number: 757811, Manufacturer: BERTOCCO, Model / Type: MH 40, Item available from: Immediately, Item condition: unchecked, Delivery terms: FCA, loaded on truck, Payment terms: 100% payment prior to collection, dimensions (l x w x h) approx.: 1,770 x 1,500 x 1,150 mm, weight approx.: 500 kg



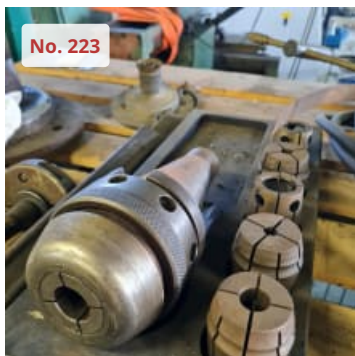
Säge

Item number: 757812, Item available from: Immediately, Item condition: unchecked, Delivery terms: FCA, loaded on truck, Payment terms: 100% payment prior to collection, dimensions (l x w x h) approx.: 1,550 x 700 x 700 mm, weight approx.: 200 kg



MORETO Grinder for Recycling Plastic

Item number: 757810, Manufacturer: MORETO, Item available from: Immediately, Item condition: unchecked, Delivery terms: FCA, loaded on truck, Payment terms: 100% payment prior to collection, dimensions (l x w x h) approx.: 1,250 x 550 x 1,050 mm, weight approx.: 120 kg



JAHRLS 901-40 Collet Chuck with Collets

Collet chuck with collets
Cone: ISO 50 M24
With 6 collets

Item number: 710933, Manufacturer: JAHRLS, Model / Type: 901-40, Item available from: immediately, Item condition: unchecked, Delivery terms: FCA Amieira, Marinha Grande, loaded on truck, Payment terms: 100% payment prior to collection, dimensions (l x w x h) approx.: 350 x 200 x 300 mm, weight approx.: 20 kg



BRANSON 2000 IW 20:2.2 Ultrasonic Plastic Welding Machine

Compact, self-contained design for convenient set-up, operation and portability.
Welding by time, breaking distance or absolute distance.
Post-break with variable delay and duration.
Automatic pre-cutoff to initiate ultrasound before contacting the workpiece.
Dynamic trigger force based on a pre-selected force setting.
Automatic adjustment with memory for fully automatic adjustment and storage of sonotrode frequencies at the end of each weld cycle.
220v
20 kHz
Serial Number: WLB05112604

Item number: 757815, Manufacturer: BRANSON, Model / Type: 2000 IW 20:2.2, Year of manufacture: 2005, Item available from: Immediately, Item condition: unchecked, Delivery terms: FCA, loaded on truck, Payment terms: 100% payment prior to collection, dimensions (l x w x h) approx.: 660 x 1,085 x 1,145 mm, weight approx.: 250 kg



Drilling Head

Drilling head
For Deckel machines

Item number: 710935, Manufacturer: unknown, Item available from: immediately, Item condition: unchecked, Delivery terms: FCA Amieira, Marinha Grande, loaded on truck, Payment terms: 100% payment prior to collection, dimensions (l x w x h) approx.: 400 x 200 x 150 mm, weight approx.: 20 kg



TOMMY NIELSEN UNIVERSAL 301 FS Blister Packaging Machine

Item number: 757814, Manufacturer: TOMMY NIELSEN, Model / Type: UNIVERSAL 301 FS, Year of manufacture: 2003, Item available from: Immediately, Item condition: unchecked, Delivery terms: FCA, loaded on truck, Payment terms: 100% payment prior to collection, dimensions (l x w x h) approx.: 1,600 x 1,800 x 1,400 mm, weight approx.: 150 kg



CHEVALIER FSG - 1632AD SURFACE GRINDER MACHINE

MAX. GRINDING CAPACITY: 16" X 32"
MAX. LONGITUDINAL TABLE TRAVEL, HYDRAULIC: 33-7/16"
MAX. LONGITUDINAL TABLE TRAVEL, MANUAL: 35-3/8"
MAX. CROSSFEED TRAVEL, AUTOMATIC: 16"
MAX. CROSSFEED TRAVEL, MANUAL: 18"
DIST. FROM SPINDLE CENTER TO TABLE: 24-3/8"
VARIABLE TABLE SPEED, HYDRAULIC: 16' TO 82' FPM
AUTOMATIC CROSSFEED INCREMENT: 1/8" TO 1-1/4"
CROSSFEED HANDWHEEL, PER GRADUATION: 0.0025"
PER REVOLUTION: 0.25"
MICROFEED, PER REVOLUTION: 0.0005"
PER GRADUATION: 0.00005"
AUTOMATIC INCREMENTAL DOWNFEED: 0.00005" TO .002"
AUTO DOWNFEED DIAL PER GRADUATION: 0.0005"
PER REVOLUTION: 0.05"
MICROFEED: 0.00005"/.0001"

RAPID TRAVERSE RATE: 8" IPM
SPINDLE MOTOR: 5 HP
STANDARD GRINDING WHEEL: 14"DIA. X 2"W X 5"B
HYDRAULICALLY ACUTATED LONGITUDINAL TABLE FEED
ELECTROMECHANICALLY ACTUATED FEED OF SADDLE

PENDANT MOUNTED AND MICROPROCESSOR CONTROLLED AUTOMATIC INCREMENTAL DOWNFEED OF GRINDING WHEELHEAD FROM 0.00005" TO 0.002" IN SURFACE OR PLUNGE MODES OF OPERATION.

FULLY AUTOMATIC GRINDING CYCLE INCLUDING RAPID ADVANCE OF GRINDING WHEELHEAD, 0 TO 7 SPARKOUT PASSES, AND RETRACTION

OF WHEELHEAD TO A PRE-SET DISTANCE AT THE COMPLETION OF THE CYCLE
TABLE AND SADDLE GUIDE WAYS MADE OF SPECIAL STEEL RAILS
WITH HIGH ACCURACY STEEL ROLLERS
PRECISION NEEDLE ROLLER BEARINGS USED ON THE ELEVATING GUIDE WAYS

FINE (MICRO) FEEDS GRADUATED TO .00005" FOR VERTICAL & CROSS FEEDS
15-3/4" X 31-1/2" KANETSU "FINE-DIVISION" "LONGITUDINAL BAR POLE"
ELECTRO-MAGNETIC CHUCK WITH A PENDANT MOUNTED POTENTIOMETER FOR VARIABLE HOLDING POWER AND A SELECTOR SWITCH FOR AUTOMATIC DEMAGNETIZATION OF WORK PIECE

OVER-THE-WHEEL DRESSER WITH MICROMETER ADJUSTMENT OF THE FEED
EXTERNAL COOLANT SYSTEM WITH PAPER FILTRATION & MAGNETIC SEPARATOR
EXTERNAL HYDRAULIC PUMP AND TANK
5 HP 3/60/230-460 VOLT DRIVE SPINDLE MOTOR

Hydraulic Central - 800 x 450 x 700 (mm)
Cooling Central - 1450 x 800 x 600 (mm)

Item number: 764302, Manufacturer: CHEVALIER, Model / Type: FSG - 1632AD, Year of manufacture: 1996, Item available from: AVAILABLE, Item condition: unchecked, Delivery terms: FCA Trofa, loaded on truck, Payment terms: 100% payment prior to collection, dimensions (l x w x h) approx.: 3,540 x 1,733 x 2,080 mm, weight approx.: 2,900 kg



TRANSOR 12290-800A FILTER SYSTEM

Item number: 764439, Manufacturer: TRANSOR, Model / Type: 12290-800A, Year of manufacture: 2006, Item available from: AVAILABLE, Item condition: unchecked, Delivery terms: FCA Trofa, loaded on truck, Payment terms: 100% payment prior to collection, dimensions (l x w x h) approx.: 1,000 x 1,700 x 1,400 mm, weight approx.: 750 kg



LOSMA 6 FILTER MIST

Item number: 764442, Manufacturer: LOSMA, Model / Type: 6, Year of manufacture: 2014, Item available from: AVAILABLE, Item condition: unchecked, Delivery terms: FCA Trofa, loaded on truck, Payment terms: 100% payment prior to collection, dimensions (l x w x h) approx.: 2,300 x 2,400 x 2,350 mm, weight approx.: 500 kg



TRANSOR 12290-1200A FILTER

Item number: 764443, Manufacturer: TRANSOR, Model / Type: 12290-1200A, Year of manufacture: 2001, Item available from: AVAILABLE, Item condition: unchecked, Delivery terms: FCA Trofa, loaded on truck, Payment terms: 100% payment prior to collection, dimensions (l x w x h) approx.: 1,000 x 2,300 x 1,400 mm, weight approx.: 1,000 kg



STRAPEX SMA10 SEMI AUTOMATIC STRAPPING MACHINE

Semi-automatic belt-laying machine for general belt-laying applications with Strapex SMA10

Type: semi-automatic
Intended use for small parts
Other characteristics: mobile
Band width: 9 mm, 12 mm (0.4 in)
Total width: 900 mm (35.4 in)

The machine has the following specifications:

- 9 to 12mm belt

- Minimum belt thickness 0.55mm
- Standard 240v Power
- Portable
- Integrated safety circuits
- Minimum block width 50mm
- Minimum block height 30mm

This machine has a problem in the ribbon, fails on the drag of the tape and not always tightens with the necessary force. Needs a overhaul.

Item number: 764444, Manufacturer: STRAPEX, Model / Type: SMA10, Year of manufacture: 2011, Item available from: AVAILABLE, Item condition: unchecked, Delivery terms: FCA Trofa, loaded on truck, Payment terms: 100% payment prior to collection, dimensions (l x w x h) approx.: 600 x 900 x 870 mm, weight approx.: 100 kg



DEBER FU 2 Universal Milling Machine

Control: FAGOR
 Longitudinal stroke: 1000 mm
 Cross travel: 360 mm
 Vertical travel: 500 mm
 Table area: 1430 x 300 mm
 Max distance between table and spindle nose: 500 mm
 Number of spindle speeds: 25
 Spindle speed: 1250 RPM
 Number of longitudinal and cross feeds: 12
 Spindle motor: 3 HP

Item number: 757825, Manufacturer: DEBER, Model / Type: FU 2, Item available from: Immediately, Item condition: unchecked, Delivery terms: FCA, loaded on truck, Payment terms: 100% payment prior to collection, dimensions (l x w x h) approx.: 2,200 x 2,100 x 1,650 mm, weight approx.: 2,400 kg



CHEVALIER FSG-618M Manual Surface Grinder

Working table size: 146 x 460 mm
 Max. grinding length - longitudinal: 457 mm
 Max. grinding width - crosswise: 152 mm
 Distance from table to centre of grinding wheel: 450 mm
 Magnetic table size: 150 x 450 mm

Logitudinal axis
 Max. manual feed: 482 mm

Transverse axis
 Max. manual feed 180 mm

Manual feed per revolution 3 mm
 Manual feed per revolution - 0.01 mm graduation
 Vertical axis
 Manual rotation - 2 mm revolution
 Manual rotation - 0.01 mm graduation

Grinding wheel
 Speed 60 Hz - 3.450 rpm
 Power 1.5 kW
 Diameter 203 mm
 Width 12.7 mm

Bore 31.75 mm
 Serial Number: FA3128997

Item number: 757828, Manufacturer: CHEVALIER, Model / Type: FSG-618M, Item available from: Immediately, Item condition: unchecked, Delivery terms: FCA, loaded on truck, Payment terms: 100% payment prior to collection, control: MITUTOYO KAcouter , weight approx.: 500 kg, dimensions (l x w x h) approx.: 1,118 x 874 x 1,930 mm



JONES & SHIPMAN 540P Surface Grinding Machine

Surface Grinding Machine with 18" x 6" Magnetic Chuck
 Table Working surface of table: 457mm x 1523mm.
 Longitudinal traverse of table (hydraulic): 483mm
 Longitudinal traverse of table (hand): 470 mm
 Cross traverse of table: 168 mm
 Traverse speed range per minute: 1.5m to 18m
 Table traverse per revolution of handwheel: 60mm
 Wheelhead motor 1.5kW.
 Hydraulic pump motor 0.55kW.
 Hydraulic system working pressure 7.03hg/cm³.
 Hydraulic tank capacity 15.5 litres.
 Speed of grinding wheel 3000 rpm.
 Automatic dust control unit: Auto-Drytex

Item number: 757827, Manufacturer: JONES & SHIPMAN, Model / Type: 540P, Item available from: Immediately, Item condition: unchecked, Delivery terms: FCA, loaded on truck, Payment terms: 100% payment prior to collection, control: MITCHAM FACTSTOR + EASSON ES10, weight approx.: 1,120 kg, dimensions (l x w x h) approx.: 1,168 x 597 x 1,651 mm



TSC OHX Cylindrical Grinding Machine

Item number: 757820, Manufacturer: TSC, Model / Type: OHX, Item available from: Immediately, Item condition: unchecked, Delivery terms: FCA, loaded on truck, Payment terms: 100% payment prior to collection, weight approx.: 2,000 kg, dimensions (l x w x h) approx.: 2,500 x 1,800 x 1,600 mm



ONA Basic 60 A Die Sinking EDM Machine

Stroke in X; Y; Z: 400 x 300 x 300 mm
 Working table: 650 x 400 mm
 Max. weight on table: 1100 kg
 Dimensions of the working tank: 1200 x 800 x 380 mm
 Max. distance head/table: 600 mm
 ATC 6 position switch
 Generator 60 Amp.
 Manual filtering unit
 Serial Number: 6410/9311

Item number: 757824, Manufacturer: ONA, Model / Type: Basic 60 A, Year of manufacture: 1993, Item available from: Immediately, Item condition: unchecked, Delivery terms: FCA, loaded on truck, Payment terms: 100% payment prior to collection, control: Ona Basic 60, weight approx.: 3,000 kg, dimensions (l x w x h) approx.: 3,000 x 3,000 x 2,500 mm



ONA Basic B 2030 - BASIC 30A Die Sinking EDM Machine

Stroke in X; Y; Z: 300 x 230 x 250 mm
 Working table: 550 x 350 mm
 Work tank dimension: 800 x 540 x 290 mm
 ATC electric switch 4 positions
 Generator 30 Amp.
 Filter unit Cartridge
 Serial Number: 6250/9210

Item number: 757822, Manufacturer: ONA, Model / Type: Basic B 2030 - BASIC 30A, Year of manufacture: 1992, Item available from: Immediately, Item condition: unchecked, Delivery terms: FCA, loaded on truck, Payment terms: 100% payment prior to collection, control: BASIC 30, weight approx.: 3,000 kg, dimensions (l x w x h) approx.: 3,000 x 3,000 x 2,500 mm



ONA AE 600 Wire EDM Machine

X-stroke: 800 mm
 Y-stroke: 600 mm
 Z strokes: 500 mm
 U-shaped travel: 500 mm
 V course: 500 mm

Maximum measure of workpiece
 X: 1300 mm
 Y: 1040 mm
 Z: 500 mm
 Maximum workpiece weight: 5000 mm

Angle of conical cut: 30°/400 - 25°/500 mm

Filtration type: Self cleaning mineral
 Filtration quality: 0.003

Wire guide: closed high precision diamond wire guide
 Wire diameter: 0.1 - 0.3 mm
 Type of wire spool: DIN 100-125-160-200-DIN 355 (45kg)
 Minimum bore diameter: 0.5 mm
 Controlling axes: X,Y,U,V,Z

Number of axes controlled simultaneously: 5
 Minimum programmable and controllable increment: 0.001 mm
 Maximum programmable dimension: ±9999.9999 mm
 External communication: Serial channel RS232, Ethernet
 Memory capacity: 2 MB RAM

Monitor: 12" TFT Colour
 Keyboard: palmtop, anti-dirt
 Pointer control: Trackball
 Remote control: Standard
 Cartridge filters: Standard

Dielectric liquid: Deionised water
 Deionisation: Mixed bed resins
 Water capacity: 740/1050 - 1240/1565 - 1650/2090 - ----/4800
 Filter: Paper filter cartridges
 Filtration capacity: 105l/min

Filter quality: 3 µm
 Ecological mineral filter (maintenance-free)
 ESPIRIT CAD CAM programming system, based on WINDOWS (from Microsoft) and customised for ONA by DP Technology.
 Wire guides: 0.1, 0.15, 0.2, 0.2, 03 mm in diameter

Dielectric cooler
 Vibration dampers
 Special workpiece clamping systems
 ONApure automatic water deionizing equipment

Item number: 757821, Manufacturer: ONA, Model / Type: AE 600, Year of manufacture: 2005, Item available from: Immediately, Item condition: unchecked, Delivery terms: FCA, loaded on truck, Payment terms: 100% payment prior to collection, weight approx.: 6,300 kg, dimensions (l x w x h) approx.: 3,000 x 3,000 x 2,500 mm



AGIE AGICUT CLASSIC 3 Wire EDM Machine

Wire diameter: 0.2 ÷ 0.33 mm
 X axis movement: 500 mm
 Y axis movement: 350 mm
 Z axis movement: 256 mm
 Workpiece X: 1050 mm
 Workpiece Y: 650 mm
 Workpiece Z: 250 mm
 Weight of workpiece: 800 kg
 Main electronic connection: 3x400 V
 Power consumption: 9kVA
 U/V axis: ± 70 / ± 70 mm

Serial Number: 0004
Made in Switzerland

Item number: 757819, Manufacturer: AGIE, Model / Type: AGICUT CLASSIC 3, Year of manufacture: 1997, Item available from: Immediately, Item condition: unchecked, Delivery terms: FCA, loaded on truck, Payment terms: 100% payment prior to collection, control: Agievision, weight approx.: 3,460 kg, dimensions (l x w x h) approx.: 2,300 x 1,904 x 2,220 mm



AGIE AGIETRON INTEGRAL 2 AGIEMATIC T + AGIEPULS 60 HSF Die Sinking EDM Machine

CNC EDM with C axis and 28 Station Tool Changer
On board Programming. 28 Station Tool Changer. 60A Generator.
X Axis: 350 mm
Y Axis: 250 mm
Z Axis: 350 mm
Table length: 600 mm
Table width: 450 mm
Max. workpiece length: 840 mm
Max. workpiece width: 600 mm
Max. workpiece height: 250 mm
Max. workpiece weight: 400 kg

Max. machining current 60 A
Worked hours: 45947
Made in Switzerland

Item number: 757823, Manufacturer: AGIE, Model / Type: AGIETRON INTEGRAL 2 AGIEMATIC T + AGIEPULS 60 HSF, Year of manufacture: 1999, Item available from: Immediately, Item condition: unchecked, Delivery terms: FCA, loaded on truck, Payment terms: 100% payment prior to collection, control: Agiecom, weight approx.: 3,000 kg, dimensions (l x w x h) approx.: 1,630 x 3,350 x 2,580 mm



CHARMILLES ROBOFORM 35 P Die Sinking EDM Machine

X axis: 350 mm
Y axis: 250 mm
Z axis: 300 mm
C axis: Yes
Max workpiece length : 780 mm
Max workpiece width: 530 mm
Max workpiece height: 300 mm
Max workpiece weight : 500 kg
Electrode changer: Yes
EROWA head
Generator: 64 amps

12" LCD screen
16 position changer

Item number: 757830, Manufacturer: CHARMILLES, Model / Type: ROBOFORM 35 P, Year of manufacture: 2001, Item available from: Immediately, Item condition: unchecked, Delivery terms: FCA, loaded on truck, Payment terms: 100% payment prior to collection, control: CHARMILLES TECHNOLOGIES, weight approx.: 2,500 kg, dimensions (l x w x h) approx.: 2,300 x 2,300 x 2,400 mm



EMCO PC TURN 125 CNC Lathe

Swing over bed: 180 mm
 Swing over cross slide: 75 mm
 Turning length: max. 121 mm
 Carriage longitudinal travel Z-axis: 172 mm
 Slide Plan X-axis: 55 mm
 Spindle bore: 20,7 mm
 Main spindle: 150 – 4000 U/min
 Tool turret: 8-fach
 Max feed rate on X axis 5 m/min
 Max feed rate on Z axis 5 m/min
 Total number of tools in the turret 8 pcs

 Feather Tailstock diameter 35 mm
 Total power demand 2.8 kW
 Serial Number: A7V V00
 Fabri Number: A7V N03 06

Item number: 757829, Manufacturer: EMCO, Model / Type: PC TURN 125, Year of manufacture: 2000, Item available from: Immediately, Item condition: unchecked, Delivery terms: FCA, loaded on truck, Payment terms: 100% payment prior to collection, control: GE FANUC SERIES, weight approx.: 600 kg, dimensions (l x w x h) approx.: 1,730 x 875 x 1,620 mm



ATLAS COPCO SF 4 FF Screw Compressor with Air Dryer

Serial Number: API718572
 400v
 7.8 bar
 50 Hz
 3.7 Kw
 2885 r/min
 Made in Belgium

Item number: 757817, Manufacturer: ATLAS COPCO, Model / Type: SF 4 FF, Year of manufacture: 2011, Item available from: Immediately, Item condition: unchecked, Delivery terms: FCA, loaded on truck, Payment terms: 100% payment prior to collection, dimensions (l x w x h) approx.: 1,340 x 620 x 1,540 mm, weight approx.: 270 kg



TOMMY NIELSEN UNIVERSAL 301 FS Blister Packaging Machine

Semiautomatic Rotary Blister Sealer

Item number: 757816, Manufacturer: TOMMY NIELSEN, Model / Type: UNIVERSAL 301 FS, Year of manufacture: 2001, Item available from: Immediately, Item condition: unchecked, Delivery terms: FCA, loaded on truck, Payment terms: 100% payment prior to collection, dimensions (l x w x h) approx.: 660 x 1,085 x 1,145 mm, weight approx.: 250 kg



Saw

Cutting Range Round Bar: 250 mm
 Shape 220 x 220mm
 Specifications of the Saw Blade 450 x 45 x 2.25 or 450 x 38 x 1.8 mm
 Speed of the Saw: 97; 75 times/minutes
 Motor Power: Main Motor 1.5kw cooling pump 0.04 kw

Item number: 758368, Item available from: Immediately, Item condition: unchecked, Delivery terms: FCA, loaded on truck, Payment terms: 100% payment prior to collection, dimensions (l x w x h) approx.: 1,400 x 600 x 900 mm, weight approx.: 700 kg



TURNIER XQ6220A Milling Machine

Item number: 758360, Manufacturer: TURNIER, Model / Type: XQ6220A, Item available from: Immediately, Item condition: unchecked, Delivery terms: FCA, loaded on truck, Payment terms: 100% payment prior to collection, dimensions (l x w x h) approx.: 1,400 x 1,300 x 2,010 mm, weight approx.: 1,500 kg



CME FU - 1E Universal Milling Machine

Table: 1300 × 300 mm
 X-axis stroke: 950 mm
 Y axis travel: 300 mm
 Z axis stroke: 450 mm
 Cone: ISO 40
 Speed range: 12, (40-1800 rpm)
 Engine power: 5.5 hp
 Work feeds (X ,Y): 12-1040 mm/min
 Work feeds
 work (Z): 6-520 mm/min
 Feeds fast (X,Y): 2400 mm/min

 Rapid feeds (Z): 1100 mm/min
 Equipped with:
 Huron head
 2 telescopes
 Drill holder bar

 1 set of tweezers and several cones
 Made in Spain

Item number: 758366, Manufacturer: CME, Model / Type: FU - 1E, Item available from: Immediately, Item condition: unchecked, Delivery terms: FCA, loaded on truck, Payment terms: 100% payment prior to collection, dimensions (l x w x h) approx.: 1,900 x 1,600 x 1,750 mm, weight approx.: 3,000 kg



CEBORA PLASMAPROF 120 Plasma Cutter

Cebora Plasma Cut Prof 120
 Three phase 380 V 22 KW
 3 installation positions 120 to 60%
 No-load voltage 250 VDC
 Maximum cutting thickness 30 mm
 Torch Line 6 meters

Item number: 758354, Manufacturer: CEBORA, Model / Type: PLASMAPROF 120, Year of manufacture: 2010, Item available from: Immediately, Item condition: in working order, Delivery terms: FCA, loaded on truck, Payment terms: 100% payment prior to collection, weight approx.: 130 kg, dimensions (l x w x h) approx.: 800 x 460 x 800 mm



DECKEL KF12 Pantograph - Universal Copying Milling machine

Universal copy milling machine make DECKEL type KF 12

Technical data:

Speed range pre-milling spindle 60 - 1000 rpm

Speed range finishing spindle with V-belt 350 - 10000 rpm

TOOL SLIDE

Distance milling cutter to stylus 450 / 350 mm

vertical movement 50 mm

Longitudinal movement 300 mm

transversal movement 180 mm

FIXED WORKING TABLE 250 x 700 mm

distance to spindle nose 475 mm

movement lengthwise and crosswise 300 x 200 mm

max. workpiece weight 600 kg

drive power 0,9 / 1,1 kW

Item number: 758358, Manufacturer: DECKEL, Model / Type: KF12, Year of manufacture: 1968, Item available from: Immediately, Item condition: unchecked, Delivery terms: FCA, loaded on truck, Payment terms: 100% payment prior to collection, dimensions (l x w x h) approx.: 1,500 x 1,200 x 1,700 mm, weight approx.: 1,500 kg



WERTHENBACH 673439 Hydraulic Unit

Item number: 758410, Manufacturer: WERTHENBACH, Model / Type: 673439, Year of manufacture: 2007, Item available from: Immediately, Item condition: unchecked, Delivery terms: FCA, loaded on truck, Payment terms: 100% payment prior to collection, dimensions (l x w x h) approx.: 800 x 600 x 800 mm, weight approx.: 80 kg



GUIFIL GM 204 Bending Guillotine Machine

Guillotine: 2 meters/4 mm

Item number: 758415, Manufacturer: GUIFIL, Model / Type: GM 204, Year of manufacture: 1971, Item available from: Immediately, Item condition: unchecked, Delivery terms: FCA, loaded on truck, Payment terms: 100% payment prior to collection, weight approx.: 3,000 kg, dimensions (l x w x h) approx.: 3,300 x 1,200 x 1,300 mm



BROWN & SHARPE N2 Surface Grinder

With Magnetic table

Item number: 758353, Manufacturer: BROWN & SHARPE, Model / Type: N2, Year of manufacture: 1959, Item available from: Immediately, Item condition: unchecked, Delivery terms: FCA, loaded on truck, Payment terms: 100% payment prior to collection, weight approx.: 300 kg, dimensions (l x w x h) approx.: 1,200 x 860 x 1,960 mm



TOS R5 Lathe

Item number: 758370, Manufacturer: TOS, Model / Type: R5, Year of manufacture: 1987, Item available from: Immediately, Item condition: unchecked, Delivery terms: FCA, loaded on truck, Payment terms: 100% payment prior to collection, dimensions (l x w x h) approx.: 2,800 x 2,200 x 1,500 mm, weight approx.: 2,000 kg



INGERSOLL RAND RH - 2BS - 13 Piston Compressor

Item number: 758359, Manufacturer: INGERSOLL-RAND, Model / Type: RH - 2BS - 13, Year of manufacture: 1988, Item available from: Immediately, Item condition: unchecked, Delivery terms: FCA, loaded on truck, Payment terms: 100% payment prior to collection, dimensions (l x w x h) approx.: 1,600 x 600 x 1,000 mm, weight approx.: 200 kg



WAGNER FCW - 620 Milling Machine

x-travel: 400 mm
y-travel: 300 mm
z-travel: 400 mm
turning speeds: 40 - 2000 U/min
table: 750 x 320
Quill stroke: 60 mm
Thickness of jaw: 160 mm
Feed range: 10 - 500 mm/min
Spindle cone: SK 40
3-axis RSF
Electronic Z503 digital display
Swiveling vertical head +/- 90°
All 3 axes with Feeds, spindle quill (60 mm)
Switchable spindle brake
Coolant system
Bore-feed 0.03; 0.12; 0.06 mm/rev. machine light

Item number: 758372, Manufacturer: WAGNER, Model / Type: FCW - 620, Year of manufacture: 1987, Item available from: Immediately, Item condition: unchecked, Delivery terms: FCA, loaded on truck, Payment terms: 100% payment prior to collection, dimensions (l x w x h) approx.: 1,300 x 1,500 x 1,700 mm, weight approx.: 2,000 kg



CHEVALIER FSG-618M Manual Surface Grinder

CHEVALIER FSG 618M
Dimensions of the table: 146 x 305 mm
Longitudinal stroke: 330 mm
Cross travel: 171 mm
Maximum height under spindle: 460 mm
Grinding wheel dimensions: 203 x 12.7 x 31.75 mm
Spindle speed: 2850 rpm

Item number: 758364, Manufacturer: CHEVALIER, Model / Type: FSG-618M, Item available from: Immediately, Item condition: unchecked, Delivery terms: FCA, loaded on truck, Payment terms: 100% payment prior to collection, weight approx.: 700 kg, dimensions (l x w x h) approx.: 1,200 x 1,000 x 1,900 mm



DECKEL OBB - SO 61-4015 Tool Grinder

Serial number: 483597
380V
Speed: 1400u/m

Item number: 758367, Manufacturer: FEINMECHANIK, Model / Type: OBB - SO 61-4015, Item available from: Immediately, Item condition: unchecked, Delivery terms: FCA, loaded on truck, Payment terms: 100% payment prior to collection, weight approx.: 100 kg, dimensions (l x w x h) approx.: 700 x 400 x 1,100 mm



VOLLMA JK8 Semi Automatic Deburring machine

Serial number: 265
380V
Speeds: 700rpm to 1400rpm

Item number: 758356, Manufacturer: VOLLMA, Model / Type: JK8, Item available from: Immediately, Item condition: unchecked, Delivery terms: FCA, loaded on truck, Payment terms: 100% payment prior to collection, dimensions (l x w x h) approx.: 750 x 650 x 1,200 mm, weight approx.: 100 kg



Collets Schaublin

Item number: 758411, Item available from: Immediately, Item condition: unchecked, Delivery terms: FCA, loaded on truck, Payment terms: 100% payment prior to collection, dimensions (l x w x h) approx.: 1,200 x 1,200 x 1,000 mm, weight approx.: 100 kg



MIKRON 121 Sharper for Cutting

Item number: 758352, Manufacturer: MIKRON, Model / Type: 121, Item available from: Immediately, Item condition: unchecked, Delivery terms: FCA, loaded on truck, Payment terms: 100% payment prior to collection, dimensions (l x w x h) approx.: 520 x 600 x 1,200 mm, weight approx.: 150 kg



STUDER 84 Grinding Machine

Item number: 758357, Manufacturer: BUG, Model / Type: DOL 84, Item available from: Immediately, Item condition: unchecked, Delivery terms: FCA, loaded on truck, Payment terms: 100% payment prior to collection, dimensions (l x w x h) approx.: 520 x 600 x 1,200 mm, weight approx.: 150 kg



HERMINGHAUSEN WERKE SR1G Grinding Machine

Serial number: 463191
4.6KW
380V
Made in Germany

Item number: 758417, Manufacturer: HERMINGHAUSEN WERKE, Model / Type: SR1G, Item available from: Immediately, Item condition: unchecked, Delivery terms: FCA, loaded on truck, Payment terms: 100% payment prior to collection, dimensions (l x w x h) approx.: 1,300 x 950 x 1,200 mm, weight approx.: 1,000 kg



UNIZ UM SY 1010 Band Saw

Dimensions Cutting
90° 1010 x 1010 mm
-30° 1010 x 870 mm
30° 1010 x 660 mm
-45° 1010 x 620 mm
45° 1010 x 500mm
Main Power 7.5kw
Coolant: 0.37kw
Chip Conveyor: 0.18 kW 1000 d/d
Chip Brush: 0.09 kW 1500 d/d
Electrovariator: 20-100

Blade Size: 9400 x 54 x 1.6
Working Height: 560
Double column, semi-automatic bandsaw machine.
The material positioning is done manually.
Suitable for workshops having single cuts.

Also angular sawing is available by swivel vice jaw.
Suitable for low-cutting quantities or single-cut shops.
Represents good performance in a wide range of applications from cutting solids to tube and pipes.

Item number: 758365, Manufacturer: UNIZ, Model / Type: UM SY 1010, Year of manufacture: 1999, Item available from: Immediately, Item condition: unchecked, Delivery terms: FCA, loaded on truck, Payment terms: 100% payment prior to collection, dimensions (l x w x h) approx.: 4,500 x 1,500 x 3,300 mm, weight approx.: 5,000 kg



Lot of Calipers

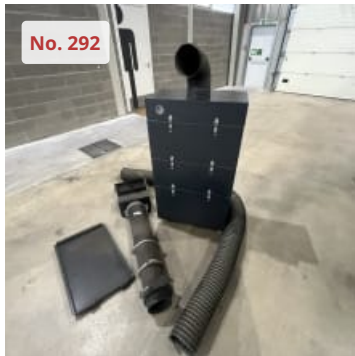
Brands: Mitutoyo, Bocchi, Insize

Item number: 758416, Item available from: Immediately, Item condition: unchecked, Delivery terms: FCA, loaded on truck, Payment terms: 100% payment prior to collection, dimensions (l x w x h) approx.: 500 x 40 x 200 mm, weight approx.: 10 kg



TBH GL400 DUST FILTER

Item number: 764446, Manufacturer: TBH, Model / Type: GL400, Year of manufacture: 2016, Item available from: AVAILABLE, Item condition: unchecked, Delivery terms: FCA Trofa, loaded on truck, Payment terms: 100% payment prior to collection, dimensions (l x w x h) approx.: 350 x 700 x 870 mm, weight approx.: 150 kg



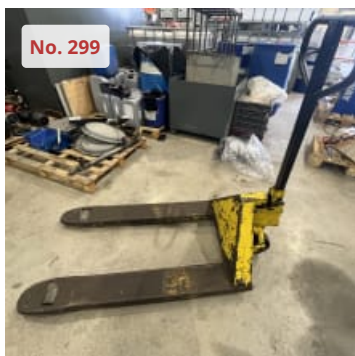
TBH GL400 DUST FILTER

Item number: 764447, Manufacturer: TBH, Model / Type: GL400, Year of manufacture: 2015, Item available from: AVAILABLE, Item condition: unchecked, Delivery terms: FCA Trofa, loaded on truck, Payment terms: 100% payment prior to collection, dimensions (l x w x h) approx.: 350 x 700 x 870 mm, weight approx.: 150 kg



TBH GL400 DUST FILTER

Item number: 764448, Manufacturer: TBH, Model / Type: GL400, Year of manufacture: 2015, Item available from: AVAILABLE, Item condition: unchecked, Delivery terms: FCA Trofa, loaded on truck, Payment terms: 100% payment prior to collection, dimensions (l x w x h) approx.: 350 x 700 x 870 mm, weight approx.: 150 kg



MT4 HAND PALLET TRUCK

Item number: 764437, Model / Type: MT4, Item available from: AVAILABLE, Item condition: unchecked, Delivery terms: FCA Trofa, loaded on truck, Payment terms: 100% payment prior to collection, dimensions (l x w x h) approx.: 2,000 x 1,000 x 1,500 mm, weight approx.: 150 kg



I-TRAC Lot of 8 Aro Sprocket

Item number: 758407, Model / Type: I-TRAC, Item available from: Immediately, Item condition: unchecked, Delivery terms: FCA, loaded on truck, Payment terms: 100% payment prior to collection, dimensions (l x w x h) approx.: 1,200 x 800 x 1,200 mm, weight approx.: 150 kg



D60/D65 (B3D29) Lot of 4 Aro Sprocket

Item number: 758389, Model / Type: D60/D65 (B3D29) , Item available from: Immediately, Item condition: unchecked, Delivery terms: FCA, loaded on truck, Payment terms: 100% payment prior to collection, dimensions (l x w x h) approx.: 1,200 x 800 x 1,200 mm, weight approx.: 200 kg



850 (27D) Lot of 2 Aro Sprocket

Item number: 758403, Model / Type: 850 (27D), Item available from: Immediately, Item condition: unchecked, Delivery terms: FCA, loaded on truck, Payment terms: 100% payment prior to collection, dimensions (l x w x h) approx.: 1,200 x 800 x 1,200 mm, weight approx.: 100 kg



J9E18 Lot of 2 Aro Sprocket

Item number: 758395, Model / Type: J9E18 , Item available from: Immediately, Item condition: unchecked, Delivery terms: FCA, loaded on truck, Payment terms: 100% payment prior to collection, dimensions (l x w x h) approx.: 1,200 x 800 x 1,200 mm, weight approx.: 100 kg



D57 S-1/60 (27D) Lot of 2 Aro Sprocket

Item number: 758391, Model / Type: D57 S-1/60 (27D) , Item available from: Immediately, Item condition: unchecked, Delivery terms: FCA, loaded on truck, Payment terms: 100% payment prior to collection, dimensions (l x w x h) approx.: 1,200 x 800 x 1,200 mm, weight approx.: 100 kg



VOLVO EC360 Lot of 2 Aro Sprocket

Item number: 758390, Manufacturer: VOLVO, Model / Type: EC360 , Item available from: Immediately, Item condition: unchecked, Delivery terms: FCA, loaded on truck, Payment terms: 100% payment prior to collection, dimensions (l x w x h) approx.: 1,200 x 800 x 1,200 mm, weight approx.: 100 kg



AKERM EC200 (23D) Lot of 7 Aro Sprocket

Item number: 758412, Manufacturer: AKERM, Model / Type: EC200 (23D) , Item available from: Immediately, Item condition: unchecked, Delivery terms: FCA, loaded on truck, Payment terms: 100% payment prior to collection, dimensions (l x w x h) approx.: 1,200 x 800 x 1,200 mm, weight approx.: 200 kg



JCB JS200LC Lot of 2 Aro Sprocket

Item number: 758396, Manufacturer: JCB, Model / Type: JS200LC , Item available from: Immediately, Item condition: unchecked, Delivery terms: FCA, loaded on truck, Payment terms: 100% payment prior to collection, dimensions (l x w x h) approx.: 1,200 x 800 x 1,200 mm, weight approx.: 100 kg



Aro Sprocket

Item number: 758402, Item available from: Immediately, Item condition: unchecked, Delivery terms: FCA, loaded on truck, Payment terms: 100% payment prior to collection, dimensions (l x w x h) approx.: 1,200 x 800 x 1,200 mm, weight approx.: 50 kg



Aro Sprocket

Item number: 758399, Item available from: Immediately, Item condition: unchecked, Delivery terms: FCA, loaded on truck, Payment terms: 100% payment prior to collection, dimensions (l x w x h) approx.: 1,200 x 800 x 1,200 mm, weight approx.: 50 kg



R942-B5 Lot of 2 Aro Sprocket

Item number: 758397, Model / Type: R942-B5 , Item available from: Immediately, Item condition: unchecked, Delivery terms: FCA, loaded on truck, Payment terms: 100% payment prior to collection, dimensions (l x w x h) approx.: 1,200 x 800 x 1,200 mm, weight approx.: 100 kg



CAT D62 Lot of 2 Aro Sprocket

Item number: 758401, Manufacturer: CAT, Model / Type: D62 , Item available from: Immediately, Item condition: unchecked, Delivery terms: FCA, loaded on truck, Payment terms: 100% payment prior to collection, dimensions (l x w x h) approx.: 1,200 x 800 x 1,200 mm, weight approx.: 100 kg



Lot of 2 Aro Sprocket

Item number: 758384, Item available from: Immediately, Item condition: unchecked, Delivery terms: FCA, loaded on truck, Payment terms: 100% payment prior to collection, dimensions (l x w x h) approx.: 1,200 x 800 x 1,200 mm, weight approx.: 100 kg



D6 (28D) Aro Sprocket

Item number: 758386, Model / Type: D6 (28D) , Item available from: Immediately, Item condition: unchecked, Delivery terms: FCA, loaded on truck, Payment terms: 100% payment prior to collection, dimensions (l x w x h) approx.: 1,200 x 800 x 1,200 mm, weight approx.: 50 kg



CAT 215 Aro Sprocket

Item number: 758404, Manufacturer: CAT, Model / Type: 215 , Item available from: Immediately, Item condition: unchecked, Delivery terms: FCA, loaded on truck, Payment terms: 100% payment prior to collection, dimensions (l x w x h) approx.: 1,200 x 800 x 1,200 mm, weight approx.: 50 kg



BERCO Aro Sprocket

Item number: 758392, Manufacturer: BERCO, Item available from: Immediately, Item condition: unchecked, Delivery terms: FCA, loaded on truck, Payment terms: 100% payment prior to collection, dimensions (l x w x h) approx.: 1,200 x 800 x 1,200 mm, weight approx.: 50 kg



D5/50 (27D) Lot of Aro Sprocket

It includes:
2 x aro sprocket
4 x aro sprocket segment

Item number: 758383, Model / Type: D5/50 (27D) , Item available from: Immediately, Item condition: unchecked, Delivery terms: FCA, loaded on truck, Payment terms: 100% payment prior to collection, dimensions (l x w x h) approx.: 1,200 x 800 x 1,200 mm, weight approx.: 200 kg



D355(27) Lot of 36 Segments

Item number: 758379, Model / Type: D355(27) , Item available from: Immediately, Item condition: unchecked, Delivery terms: FCA, loaded on truck, Payment terms: 100% payment prior to collection, dimensions (l x w x h) approx.: 1,200 x 800 x 1,200 mm, weight approx.: 300 kg



Lot of 38 Sprocket

Sprocket x 8 (I-TRAC)
Sprocket x 16 (CAT)
Sprocket x 6 (I-TRAC)
Sprocket x 8

Item number: 758381, Item available from: Immediately, Item condition: unchecked, Delivery terms: FCA, loaded on truck, Payment terms: 100% payment prior to collection, dimensions (l x w x h) approx.: 1,200 x 800 x 1,200 mm, weight approx.: 250 kg



I-TRAC TB6-Y Lot of 2 Chains

Item number: 758400, Manufacturer: I-TRAC , Model / Type: TB6-Y , Item available from: Immediately, Item condition: unchecked, Delivery terms: FCA, loaded on truck, Payment terms: 100% payment prior to collection, dimensions (l x w x h) approx.: 1,200 x 800 x 1,200 mm, weight approx.: 300 kg



22" -5/8-215/225 Lot of 78 Pach

Item number: 758378, Model / Type: 22" -5/8-215/225, Item available from: Immediately, Item condition: unchecked, Delivery terms: FCA, loaded on truck, Payment terms: 100% payment prior to collection, dimensions (l x w x h) approx.: 1,200 x 800 x 1,200 mm, weight approx.: 400 kg



20" Lot of 68 Pach

Item number: 758387, Model / Type: 20" , Item available from: Immediately, Item condition: unchecked, Delivery terms: FCA, loaded on truck, Payment terms: 100% payment prior to collection, dimensions (l x w x h) approx.: 1,200 x 800 x 1,200 mm, weight approx.: 400 kg



14" D4/941 5/8 Lot of 39 Pach

Item number: 758388, Model / Type: 14" D4/941 5/8, Item available from: Immediately, Item condition: unchecked, Delivery terms: FCA, loaded on truck, Payment terms: 100% payment prior to collection, dimensions (l x w x h) approx.: 1,200 x 800 x 1,200 mm, weight approx.: 350 kg



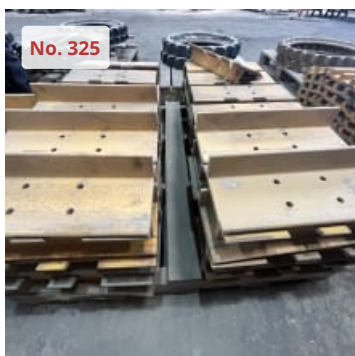
15" D5/951 5/8 Lot of 39 Pach

Item number: 758394, Model / Type: 15" D5/951 5/8, Item available from: Immediately, Item condition: unchecked, Delivery terms: FCA, loaded on truck, Payment terms: 100% payment prior to collection, dimensions (l x w x h) approx.: 1,200 x 800 x 1,200 mm, weight approx.: 350 kg



17"-2V5114 Lot of 66 Pach

Item number: 758377, Model / Type: 17"-2V5114 , Item available from: Immediately, Item condition: unchecked, Delivery terms: FCA, loaded on truck, Payment terms: 100% payment prior to collection, dimensions (l x w x h) approx.: 1,200 x 800 x 1,200 mm, weight approx.: 400 kg



20" Lot of 78 Pach

Item number: 758380, Model / Type: 20" , Item available from: Immediately, Item condition: unchecked, Delivery terms: FCA, loaded on truck, Payment terms: 100% payment prior to collection, dimensions (l x w x h) approx.: 1,200 x 800 x 1,200 mm, weight approx.: 400 kg



24" Lot of 6 Pach

Item number: 758406, Model / Type: 24", Item available from: Immediately, Item condition: unchecked, Delivery terms: FCA, loaded on truck, Payment terms: 100% payment prior to collection, dimensions (l x w x h) approx.: 1,200 x 800 x 1,200 mm, weight approx.: 200 kg



Lot of 6 Pach

Item number: 758413, Item available from: Immediately, Item condition: unchecked, Delivery terms: FCA, loaded on truck, Payment terms: 100% payment prior to collection, dimensions (l x w x h) approx.: 1,200 x 800 x 1,200 mm, weight approx.: 80 kg



Lot of 6 Pach

Pach 20" x 4
Pach 24" ESS D9L FUR01 x 3

Item number: 758409, Item available from: Immediately, Item condition: unchecked, Delivery terms: FCA, loaded on truck, Payment terms: 100% payment prior to collection, dimensions (l x w x h) approx.: 1,200 x 800 x 1,200 mm, weight approx.: 100 kg



Lot of 14 Pach

Pach D3 x 10
pach 941 x 4

Item number: 758375, Item available from: Immediately, Item condition: unchecked, Delivery terms: FCA, loaded on truck, Payment terms: 100% payment prior to collection, dimensions (l x w x h) approx.: 1,200 x 800 x 1,200 mm, weight approx.: 90 kg



Lot of 13 Double Rollers

Item number: 758398, Item available from: Immediately, Item condition: unchecked, Delivery terms: FCA, loaded on truck, Payment terms: 100% payment prior to collection, dimensions (l x w x h) approx.: 1,200 x 800 x 1,200 mm, weight approx.: 400 kg



Lot of 7 Rollers

Item number: 758376, Item available from: Immediately, Item condition: unchecked, Delivery terms: FCA, loaded on truck, Payment terms: 100% payment prior to collection, dimensions (l x w x h) approx.: 1,200 x 800 x 1,200 mm, weight approx.: 400 kg



Lot of 8 Rollers

Item number: 758382, Item available from: Immediately, Item condition: unchecked, Delivery terms: FCA, loaded on truck, Payment terms: 100% payment prior to collection, dimensions (l x w x h) approx.: 1,200 x 800 x 1,200 mm, weight approx.: 200 kg



Lot of 43 Rollers

Item number: 758393, Item available from: Immediately, Item condition: unchecked, Delivery terms: FCA, loaded on truck, Payment terms: 100% payment prior to collection, dimensions (l x w x h) approx.: 4,200 x 800 x 4,200 mm, weight approx.: 550 kg



TACHIAIR OFA 035-388 AIR CONDITIONING

Item number: 764445, Manufacturer: TACHIAIR, Model / Type: OFA 035-388, Item available from: AVAILABLE, Item condition: unchecked, Delivery terms: FCA, loaded on truck, Payment terms: 100% payment prior to collection, dimensions (l x w x h) approx.: 1,500 x 1,000 x 500 mm, weight approx.: 30 kg



HITEMA - KELVIN - SEIFERT KUR42.10.AAC Chiller, Electric Cabinet and Air Conditioner

Spindle cooler with electrical cabinet and air conditioning unit
Brands: HITEMA / KELVIN / SEIFERT

Item number: 731553, Manufacturer: HITEMA - KELVIN - SEIFERT, Model / Type: KUR42.10.AAC, Year of manufacture: 1998, Item available from: Immediately, Item condition: unchecked, Delivery terms: FCA Trofa, loaded on truck, Payment terms: 100% payment prior to collection, dimensions (l x w x h) approx.: 1,200 x 1,000 x 1,400 mm, weight approx.: 120 kg



Milling Table

Deckel FP3 Milling Table
Working Table Dimensions: 1000 mm x 430 mm
5 Horizontal T-Slots
2 Vertical T-Slots
Tension clamp 90 in 90 mm x 4
T-Slot of 20mm

Item number: 684812, Manufacturer: DECKEL, Item available from: immediately, Item condition: unchecked, Delivery terms: FCA Amieira, Marinha Grande, loaded on truck, Payment terms: 100% payment prior to collection, weight approx.: 200 kg, dimensions (l x w x h) approx.: 1,117 x 500 x 420 mm



EQUIULTRA Automatic Ultrasonic Cleaning Line

Machine without ultrasonic generator
With 3 tanks

Item number: 731583, Manufacturer: EQUIULTRA, Item available from: Immediately, Item condition: unchecked, Delivery terms: FCA Trofa, loaded on truck, Payment terms: 100% payment prior to collection, dimensions (l x w x h) approx.: 4,500 x 1,600 x 3,200 mm, weight approx.: 1,000 kg