

Auction Catalogue

Woodworking Machinery Selection - September (Spain)

The items are in different locations (see item description)

Viewing by appointment only!

43 lots

Bidding ends:

Friday, 23/09/2022, 11:00(local time)

Bids are welcome immediately and can be placed at:

Contact:

Nancy Castañeda

+34 936393895

nancy.castaneda@surplex.com

www.surplex.com

Viewing:

The items are in different locations (see item description)

Viewing by appointment only!

Description:

Selection of Woodworking Machinery from insolvencies and diferent manufacturers

Important Brands such as BIESSE, EGURKO, CEHISA, VIBEMO, SCM, etc.

1. The item list is being continuously updated - please check it regularly!
2. Items are located in different locations.



BIESSE ROVER A SMART 1659 5-Axis CNC Machining Center

- Useful working dimensions 5920 x 1620 x 245 mm
- Maximum travel speed 100 m/min
- Maximum programmable speed in axes direction x-y-z: 80-60-20 m/min
- Working table dimensions approx. 5920 x 1300 mm
- 10 consoles with 3 vacuum suction cups each
- Lifting modules for heavy workpieces
- Vacuum pump BUSCH MM 1252 A V03 with capacity 290 m³/h
- Tool magazine with 16 positions
- 5-axis electrospindle: power 11 KW-max. 20000 rpm, automatic tool change, for HSK F63 tool holder, liquid cooled
- Chip collection system

- Automatic lubrication
- Remote control panel BIESSE RM850
- Dimensions for transport 13000 x 2400 x 2750 mm

Item number: 745133, Manufacturer: BIESSE, Model / Type: ROVER A SMART 1659, Year of manufacture: 2020, Item available from: Immediately, Item condition: unchecked, Delivery terms: FCA Burriana, loaded on truck, Payment terms: 100% payment prior to collection, serial number: 1,000,040,156, control: CNI, software: B_Suite 3 - B_Solid, dimensions (l x w x h) approx.: 8,300 x 5,600 x 2,750 mm, weight approx.: 5,000 kg



Hand Pallet Truck

- Hand pallet truck
- Loading capacity 2000 kg
- Fork dimensions 1140 x 540 mm

Item number: 706458, Manufacturer: unknown, Item available from: immediately, Item condition: unchecked, Delivery terms: FCA Torello, loaded on truck, Payment terms: 100% payment prior to collection, dimensions (l x w x h) approx.: 1,550 x 540 x 1,250 mm, weight approx.: 80 kg



BIESSE ARTECH AKRON 440 Edgebander

Serial Number: 3369
Touch panel control
Panel height: 60 mm
Feed speed: up to 12 m/min
Adjustable working height
Panel support guide
Panel infeed table for alignment of the infeed panel
Side roller conveyor with idle wheels for panel support
Grinding unit
Gluing unit for EVA hot melt glue with glue container

Tenoning unit with 2 tilting motors
Rounding unit with 2 motors
Glue scraping unit
Edge scraping unit
Cleaning brushing unit

Grupo Phon
Automatic return system
Workpiece Solid wood: 10 mm
PVC / Abs mm 3

Item number: 747240, Manufacturer: BIESSE ARTECH, Model / Type: AKRON 440, Year of manufacture: 2010, Item available from: Immediately, Item condition: unchecked, Delivery terms: FCA Torello, loaded on truck, Payment terms: 100% payment prior to collection, workpiece thickness: 10 mm, dimensions (l x w x h) approx.: 5,500 x 2,300 x 2,300 mm, weight approx.: 3,500 kg, Serial Number of Manufacturer: 3,369



CEHISA EP 15 Edgebander

- Gluing unit with pot for granulated hot melt adhesive
- Pressure group with (1+1) rollers
- End trimming unit
- Fine trimming unit

Item number: 767182, Manufacturer: CEHISA, Model / Type: EP 15, Item available from: Immediately, Item condition: unchecked, Delivery terms: FCA Lliça De Vall, loaded on truck, Payment terms: 100% payment prior to collection, edge magazine with: 1 -fold roller, edge thickness: max. 4 mm, workpiece thickness: 8 - 50 mm, feed: 13 m/min, dimensions (l x w x h) approx.: 3,200 x 1,000 x 1,400 mm, weight approx.: 1,000 kg



ALTENDORF F 90 Sliding Table Saw machine

Item number: 767184, Manufacturer: ALTENDORF, Model / Type: F 90, Item available from: Immediately, Item condition: unchecked, Delivery terms: FCA Lliça De Vall, loaded on truck, Payment terms: 100% payment prior to collection, main motor: 3.75 kW, cutting length: 3,000 mm, scoring saw: 0.75 kW, dimensions (l x w x h) approx.: 3,000 x 1,500 x 900 mm, weight approx.: 800 kg

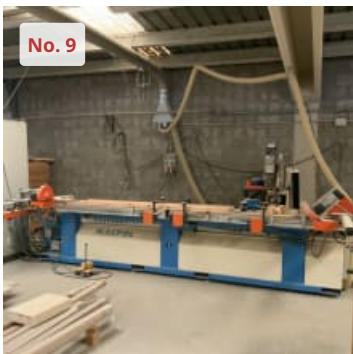


HOLZ-HER TRIATHLON 420 Edgebander

- Edge thickness from 0.40 mm up to 25 mm
- Workpiece thickness from 6 mm up to 60 mm
- Minimum workpiece length 140 mm
- Adjustable feed speed
- Control
- Edge feeder for strips and roll, edge magazine for 1 edge coil
- Cartridge glue system
- Pressure group with (1+2) rollers
- End trimming unit
- Fine trimming unit
- Scraping unit

- Profile trimming unit
- Edge buffing unit
- Milling group
- Sanding belt unit

Item number: 767183, Manufacturer: HOLZ-HER, Model / Type: TRIATHLON 420, Item available from: Immediately, Item condition: unchecked, Delivery terms: FCA Lliça De Vall, loaded on truck, Payment terms: 100% payment prior to collection, dimensions (l x w x h) approx.: 6,500 x 900 x 1,500 mm, weight approx.: 2,500 kg



MACPOL SPEEDY-BLF CNC Mortising Machine

MACPOL SPEEDY BLF CNC Mortising Machine

Serial number: 980065

Composition:

- Saw group with 45° cut and with pneumatic movements (Motor power 2.2 kW)
- Saw group with 90° cut and pneumatic movements (Motor power 2.2 kW)
- Horizontal mortising group
- Horizontal milling group (Motor power 3.3 kw - 18000 Rpm)
- Vertical milling group (Motor power 3.3 kw - 18000 Rpm)

Windows 98 operating system

Working pressure: 6.5 Bar

Pedal operated

CE Standards

Item number: 620744, Manufacturer: MACPOL, Model / Type: SPEEDY-BLF, Year of manufacture: 2004, Item available from: immediately, Item condition: unchecked, Delivery terms: FCA Granollers, loaded on truck, Payment terms: 100% payment prior to collection, dimensions (l x w x h) approx.: 7,500 x 2,400 x 2,200 mm, weight approx.: 2,000 kg



SISMA GIS450 stitching machine

Neck pitch 450 mm
single-phase

Item number: 707165, Manufacturer: SISMA, Model / Type: GIS450, Year of manufacture: unknown, Item available from: immediately, Item condition: unchecked, Delivery terms: FCA Lliça De Vall, loaded on truck, Payment terms: 100% payment prior to collection, dimensions (l x w x h) approx.: 600 x 400 x 500 mm, weight approx.: 40 kg



CEHISA 307 Edgebander

Machine consisting of:

Gluing unit
Up to 3 mm PVC
Height: up to 55mm.
Double End Trimming unit
Re-melting unit
Profiling unit
Scraping group
Edge buffing unit

Three-phase machine
Installed Power: 8kw
Motor Power: 2,2kw
CE Standard

Item number: 747348, Manufacturer: CEHISA, Model / Type: 307, Item available from: Immediately, Item condition: unchecked, Delivery terms: FCA Lliça De Vall, loaded on truck, Payment terms: 100% payment prior to collection, serial number: 828, gluing unit: SI, snipping unit: SI, fine trimming unit: SI, profile trimming unit: SI, total power approx: 8 kW, dimensions (l x w x h) approx.: 6,000 x 1,000 x 1,600 mm, weight approx.: 1,800 kg



EGURKO DART 700 CHF CNC Machining Centre (Wood)

Serial Number: 8145603
Machine with bar system.
12 suction cups
Milling unit
Drilling unit
Working Dimensions: 3000x1000mm
Tool changer
Vacuum pump
Three-phase machine
CE Standard

Item number: 747347, Manufacturer: EGURKO, Model / Type: DART 700 CHF, Year of manufacture: 2003, Item available from: Immediately, Item condition: unchecked, Delivery terms: FCA Lliça De Vall, loaded on truck, Payment terms: 100% payment prior to collection, serial number: 8,145,603, dimensions (l x w x h) approx.: 6,200 x 2,000 x 2,400 mm, weight approx.: 3,000 kg



SCM STEFANI MDR Edgebander

- Serial number AH00001115
- Total installed power approx. 44 KW
- Edge thickness from 0.40 mm up to 15 mm
- Workpiece thickness from 10 mm up to 60 mm
- Adjustable feed speed from 10 m/min up to 18 m/min
- Motorized height positioning
- SCM STARTOUCH control
- Anti-sticking spray group
- Joint trimming unit, 2 x motor
- Edge feeder for strips and roll, edge magazine for 1 edge coil
- Gluing unit with pot for granulated hot melt adhesive, with premelting unit
- Pressure group with (1+5) rollers
- SCM YU/SP-750 end trimming unit, 2 x motor 0.55 KW-12000 rpm
- SCM RSP rough trimming unit, 2 x motor 1.03 KW-12000 rpm
- Fine trimming unit, 2 x motor 1 KW-12000 rpm
- SCM SK profile trimming unit, 2 x motor 0.55 KW-12000 rpm
- SCM RAS 1000 profile scraping unit
- SCM TUPU U milling group: tilting from 0° up to 90°, motor 4 KW-12000 rpm
- SCM RCA/2C flat scraping unit
- SCM SPN edge buffing unit
- Anti-sticking spray group
- Working hours 2203

Item number: 747351, Manufacturer: SCM, Model / Type: STEFANI MDR, Year of manufacture: 2019, Item available from: Immediately, Item condition: unchecked, Delivery terms: FCA Burriana, loaded on truck, Payment terms: 100% payment prior to collection, dimensions (l x w x h) approx.: 7,500 x 1,050 x 2,000 mm, weight approx.: 3,800 kg



EGURKO ORTZA IDEAL 38-21 Panel Saw & Angular Plant Machine

Serial number: 8410905
 With software and label printer and automatic board feeder
 Inner diameter of discs: 65 mm
 Main disc Ø max.: 300 mm.
 Scoring disc Ø max: 200 mm.
 Power: 44,2 kVA.
 Cutting length: 2100 x 3660 mm.
 Cutting thickness: 60 mm
 Zebra printer model: GK420t.
 CE certificate available

The protections are not installed.

The machine was reconditioned and put in working order
 2 trucks needed for transport.

Item number: 670727, Manufacturer: EGURKO ORTZA, Model / Type: IDEAL 38-21, Year of manufacture: 2005, Item condition: unchecked, Delivery terms: FCA Soria, loaded on truck, Payment terms: 100% payment prior to collection, serial number: 8,410,905, dimensions (l x w x h) approx.: 7,600 x 2,200 x 4,650 mm, weight approx.: 3,000 kg



PAUL K 34 M 1500 Variable Multi Blade Saw for Panels

- Total installed power 153 KW
- Maximum working width 1500mm
- Maximum workpiece thickness approx. 80mm
- Maximum blade saw diameter approx. 300mm
- Variable feed speed
- All cutting groups working from below
- 3 x groups with 2 cutting heads each, each head has a 10 KW power motor, each head can be positioned independently at the required distance by CNC
- 1 x group with multi-disc shaft, motor 55 KW
- Tools to help you assemble the shafts are included
- Input conveyor with useful dimensions 2000 x 1400 mm is included

- Output conveyor with brush cleaning machine is included, working width approx. 1300 mm
- Blade saws and accessories are included
- Dimensions for transport 10000 x 2800 x 2300 mm
- This item needs to be transported on a truck for special width 2800 mm

Item number: 725812, Manufacturer: PAUL, Model / Type: K 34 M 1500, Year of manufacture: 1999, Item available from: Immediately, Item condition: unchecked, Delivery terms: FCA Tomiño - Pontevedra, loaded on truck, Payment terms: 100% payment prior to collection, serial number: 128,850, dimensions (l x w x h) approx.: 7,500 x 6,450 x 2,300 mm, weight approx.: 11,000 kg



SCM OLIMPIC S-212 Edgebander

Serial Number: AL 1/00289
 Monolateral machine consisting of:

- Glueing unit
- End trimming unit with 2 motors
- 2 cutting trimmer units
- Edge trimming unit
- Scraping unit
- Edge scrapping unit
- Cleaning brushes unit

Item number: 747957, Manufacturer: SCM, Model / Type: OLIMPIC S-212, Item available from: Immediately, Item condition: unchecked, Delivery terms: FCA La Garriga, Barcelona, loaded on truck, Payment terms: 100% payment prior to collection, gluing unit: si, snipping unit: si, dimensions (l x w x h) approx.: 7,200 x 2,000 x 2,300 mm, weight approx.: 3,400 kg



REINBOLD AZR 50 P Chipper

Hydraulic Shredder
 Power: 11 kw

Item number: 747955, Manufacturer: REINBOLD, Model / Type: AZR 50 P, Year of manufacture: 2013, Item available from: Immediately, Item condition: unchecked, Delivery terms: FCA La Garriga, Barcelona, loaded on truck, Payment terms: 100% payment prior to collection, dimensions (l x w x h) approx.: 1,500 x 1,400 x 2,000 mm, weight approx.: 2,000 kg



DMC TECHNOSAND TC1100 MC3 Wide belt sander Machine

Serial Number: 29498050118L
 Working Width: 1200 mm
 Three sanding belts
 Suction system included
 CE Standard

Item number: 767659, Manufacturer: DMC, Model / Type: TECHNOSAND TC1100 MC3, Year of manufacture: 2001, Item available from: Immediately, Item condition: unchecked, Delivery terms: FCA Villacañas, loaded on truck, Payment terms: 100% payment prior to collection, dimensions (l x w x h) approx.: 3,300 x 1,200 x 2,500 mm, weight approx.: 3,060 kg



NIPUER 7 Dovetailer Machine

Dovetailer Machine

Item number: 734022, Manufacturer: NIPUER, Model / Type: 7, Item available from: Inmediately, Item condition: unchecked, Delivery terms: FCA Sueca, loaded on truck, Payment terms: 100% payment prior to collection, dimensions (l x w x h) approx.: 1,300 x 1,350 x 800 mm, weight approx.: 300 kg



Profile Grinding Machine

Item number: 734021, Item available from: Inmediately, Item condition: unchecked, Delivery terms: FCA Sueca, loaded on truck, Payment terms: 100% payment prior to collection, dimensions (l x w x h) approx.: 130 x 117 x 87 mm, weight approx.: 300 kg



T90L2 Suction system 4 bags

Power: 2,2kw
Speed: 2800m/min

Item number: 742677, Model / Type: T90L2, Year of manufacture: 1987, Item available from: Inmediately, Item condition: unchecked, Delivery terms: FCA Sueca, loaded on truck, Payment terms: 100% payment prior to collection, dimensions (l x w x h) approx.: 2,550 x 5,400 x 1,850 mm, weight approx.: 70 kg



OZAKA JD-75 Dovetailer Machine

Serial Number : 2001307
Power : 380v

Item number: 734024, Manufacturer: OZAKA, Model / Type: JD-75, Year of manufacture: 2001, Item available from: Inmediately, Item condition: unchecked, Delivery terms: FCA Sueca, loaded on truck, Payment terms: 100% payment prior to collection, dimensions (l x w x h) approx.: 1,500 x 1,400 x 1,000 mm, weight approx.: 400 kg



No. 46

Dust collector

1 bag
Power : 1,5kw
Speed: 2800rpm

Item number: 719635, Manufacturer: CORAL, Model / Type: JUNIOR, Year of manufacture: unknown, Item available from: immediately, Item condition: unchecked, Delivery terms: FCA Alzira, loaded on truck, Payment terms: 100% payment prior to collection, dimensions (l x w x h) approx.: 1,100 x 700 x 1,800 mm, weight approx.: 30 kg



No. 47

T90L2 Suction 4 bags

Power: 2,2kw
Speed: 2800m/min

Item number: 742675, Model / Type: T90L2, Item available from: Immediately, Item condition: unchecked, Delivery terms: FCA Sueca, loaded on truck, Payment terms: 100% payment prior to collection, dimensions (l x w x h) approx.: 2,550 x 6,500 x 1,850 mm, weight approx.: 70 kg



No. 48

VIBEMO M 300 Mitre saw

Saw diameter: 300mm

Item number: 719634, Manufacturer: VIBEMO, Model / Type: M 300, Year of manufacture: unknown, Item available from: immediately, Item condition: unchecked, Delivery terms: FCA Sueca, loaded on truck, Payment terms: 100% payment prior to collection, dimensions (l x w x h) approx.: 700 x 700 x 500 mm, weight approx.: 40 kg



No. 49

Coating Unit

Working Width: 1300mm

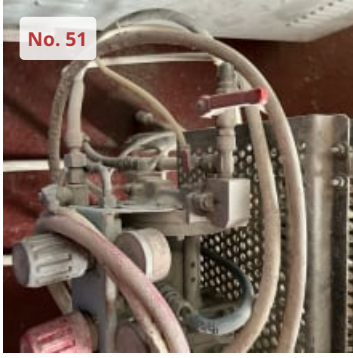
Item number: 719645, Manufacturer: unknown, Model / Type: unknown, Year of manufacture: unknown, Item available from: immediately, Item condition: unchecked, Delivery terms: FCA Sueca, loaded on truck, Payment terms: 100% payment prior to collection, dimensions (l x w x h) approx.: 2,200 x 2,000 x 1,400 mm, weight approx.: 300 kg



No. 50

OMA 350 Chain mortiser

Item number: 734019, Manufacturer: OMA, Model / Type: 350, Item available from: Immediately, Item condition: unchecked, Delivery terms: FCA Sueca, loaded on truck, Payment terms: 100% payment prior to collection, condition: Sin comprobar, dimensions (l x w x h) approx.: 160 x 200 x 80 mm, weight approx.: 150 kg



PORVAL Varnishing equipment

Item number: 752761, Manufacturer: PORVAL, Item available from: Immediately, Item condition: unchecked, Delivery terms: FCA Alzira, loaded on truck, Payment terms: 100% payment prior to collection, dimensions (l x w x h) approx.: 700 x 850 x 1,110 mm, weight approx.: 20 kg



IRAC MICRO Solvent recovery machine

Serial Number: 0100046
Volt :23v
Max. Temperature 200°C

Item number: 752760, Manufacturer: IRAC, Model / Type: MICRO, Year of manufacture: 2000, Item available from: Immediately, Item condition: unchecked, Delivery terms: FCA Alzira, loaded on truck, Payment terms: 100% payment prior to collection, dimensions (l x w x h) approx.: 900 x 600 x 1,500 mm, weight approx.: 50 kg



Sanding Table

Item number: 752757, Item available from: Immediately, Item condition: unchecked, Delivery terms: FCA Alzira, loaded on truck, Payment terms: 100% payment prior to collection, dimensions (l x w x h) approx.: 850 x 2,050 x 900 mm, weight approx.: 50 kg



REXON RDM 50B Column Drill

Serial Number: 35475
Power: 0,75kw

Item number: 752758, Manufacturer: REXON, Model / Type: RDM 50B, Item available from: Immediately, Item condition: unchecked, Delivery terms: FCA Alzira, loaded on truck, Payment terms: 100% payment prior to collection, weight approx.: 15 kg, dimensions (l x w x h) approx.: 890 x 800 x 850 mm



CFMG Working Platform / Elevator (Construction)

Unused item
Elevation motor: yes
Traction motor: no
Up to 500 kg load
Working height: 9,000 mm
1100 W electric motor included
Solid wheels

Item number: 748774, Manufacturer: CFMG, Year of manufacture: 2020, Item available from: Immediately, Item condition: unchecked, Delivery terms: FCA Villamuriel de Cerrato, loaded on truck, Payment terms: 100% payment prior to collection, dimensions (l x w x h) approx.: 2,250 x 1,000 x 2,250 mm, weight approx.: 1,000 kg



SSANGYONG REXTON 270 XDI Car

- Car, vehicle
- Registration number 2366 FGJ
- Frame number KPTG0B1FS6P22628
- Turbo-diesel engine SSANGYONG D/D27DT , 5 cylinders, displacement 2696 cc, power 121 KW
- Manual transmission, gearbox 5 gears
- Four wheel drive
- Maximum speed 177 km/h
- Average consumption approx. 9.00 l/100 km
- Climate control, air conditioner, radio CD Stereo
- Mileage 172100 km according to the counter

• This vehicle is delivered with only one set of keys
• Ownership change costs will be paid by Surplex
• MOT certificate costs will be paid by the buyer
• The buyer is responsible for passing MOT in order to circulate in Spain
• To transport this machine you need an appropriate truck with loading ramp. If you have to load it with a crane or use other means, an additional amount will be charged for this service

Item number: 767186, Manufacturer: SSANGYONG, Model / Type: REXTON 270 XDI, Year of manufacture: 2006, Item available from: Immediately, Item condition: unchecked, Delivery terms: FCA Palencia, loaded on truck, Payment terms: 100% payment prior to collection, dimensions (l x w x h) approx.: 4,720 x 1,870 x 1,830 mm, weight approx.: 1,986 kg



VIRUTEX EB 25 Edgebander for Preglued Edges

- Edgebander for preglued edges
- Workpiece thickness from 11 mm up to 65 mm
- Automatic feed
- Feed speed approx. 4.50 m/min
- End trimming unit
- Rough trimming unit

Item number: 767187, Manufacturer: VIRUTEX, Model / Type: EB 25, Item available from: Immediately, Item condition: unchecked, Delivery terms: FCA Palencia, loaded on truck, Payment terms: 100% payment prior to collection, dimensions (l x w x h) approx.: 1,750 x 1,000 x 1,300 mm, weight approx.: 200 kg



GAHESA Pressure Tank for Painting

- Pressure tank for painting
- Capacity approx. 30 liters
- Working pressure 7 kg/cm²
- JA-FE application gun is included

Item number: 767185, Manufacturer: GAHESA, Item available from: Immediately, Item condition: unchecked, Delivery terms: FCA Palencia, loaded on truck, Payment terms: 100% payment prior to collection, dimensions (l x w x h) approx.: 400 x 400 x 900 mm, weight approx.: 30 kg



Working Platform / Elevator (Construction)

Unused item
Elevation motor: yes
Traction motor: no
Up to 500 kg load
Working height: 9,000 mm
1100 W electric motor included
Solid wheels

Item number: 764471, Manufacturer: CFMG, Year of manufacture: 2020, Item available from: Immediately, Item condition: unchecked, Delivery terms: FCA Villamuriel de Cerrato, loaded on truck, Payment terms: 100% payment prior to collection, dimensions (l x w x h) approx.: 2,250 x 1,000 x 2,250 mm, weight approx.: 1,000 kg



FURA-2 Chain Mortiser

Chain mortiser for locks: .
Stroke: 180 mm
Maximum drilling depth: 150 mm.
Motor power: 2,2371 kw

Note: Machine not connected, not checked, inspection recommended.

Item number: 747758, Manufacturer: FURA-2, Item available from: Immediately, Item condition: unchecked, Delivery terms: FCA LA GARRIGA, loaded on truck, Payment terms: 100% payment prior to collection, dimensions (l x w x h) approx.: 700 x 900 x 1,500 mm, weight approx.: 200 kg



MAQUIN OLIMPIC M-5000 Unilateral Edgebander

Serial Number: 20480

Unilateral machine consisting of:

Joint Trimming unit
Gluing unit
End trimming unit
Trimming unit
Rounding unit
Scrapping unit

Sanding Unit
Spindle moulder for grooves

Note: Machine not connected, not checked, inspection recommended.

Item number: 747761, Manufacturer: MAQUIN OLIMPIC, Model / Type: M-5000, Year of manufacture: 2000, Item available from: Immediately, Item condition: unchecked, Delivery terms: FCA LA GARRIGA, loaded on truck, Payment terms: 100% payment prior to collection, dimensions (l x w x h) approx.: 6,000 x 1,500 x 1,600 mm, weight approx.: 2,400 kg



VIRUTEX EB-15 Edgebander for Preglued Edges

Consisting of:

Serial Number: 5951
Edgebander for preglued edges.
Shear unit
Profiler unit
Installed power: 2850 kw
Min. Edge thickness: 11 mm.

Note: Machine not connected, not checked, inspection recommended.

Item number: 747748, Manufacturer: VIRUTEX, Model / Type: EB-15, Item available from: Immediately, Item condition: unchecked, Delivery terms: FCA LA GARRIGA, loaded on truck, Payment terms: 100% payment prior to collection, dimensions (l x w x h) approx.: 1,500 x 1,000 x 1,100 mm, weight approx.: 180 kg



WEINIG PROFIMAT 22N Moulder

Serial Number: 226-2598
4-axis machine
Max. working width: 220 mm
Max. working height: 120 mm
Feed speed: 6 to 22 meters / min
Power of the spindle moulder motors: 4,1 -5,5 kw
Top power motor: 4,1kw
Inlet table length :2000mm
TERSA heads included

Note: Machine not connected, not checked, inspection recommended.

Item number: 747750, Manufacturer: WEINIG, Model / Type: PROFIMAT 22N, Year of manufacture: 1989, Item available from: Immediately, Item condition: unchecked, Delivery terms: FCA LA GARRIGA, loaded on truck, Payment terms: 100% payment prior to collection, total power: 4,1 kW, dimensions (l x w x h) approx.: 3,400 x 1,300 x 1,400 mm, weight approx.: 3,200 kg



MAKOR Varnishing Machine

Painting machine with 6 guns
Drag belt width: 150 mm

Note: Machine not connected, not checked, inspection recommended.

Item number: 747749, Manufacturer: MAKOR, Item available from: Immediately, Item condition: unchecked, Delivery terms: FCA LA GARRIGA, loaded on truck, Payment terms: 100% payment prior to collection, dimensions (l x w x h) approx.: 4,300 x 1,200 x 1,200 mm, weight approx.: 900 kg



HOLZ HER 1402 Edgebander

Unilateral machine consisting of:

Gluing unit with cartridge
Trimming unit
Shaper unit
Edge buffing unit

Note: Machine not connected, not checked, inspection recommended.

Item number: 747755, Manufacturer: HOLZ-HER, Model / Type: 1402, Item available from: Immediately, Item condition: unchecked, Delivery terms: FCA LA GARRIGA, loaded on truck, Payment terms: 100% payment prior to collection, dimensions (l x w x h) approx.: 4,000 x 1,200 x 1,600 mm, weight approx.: 2,300 kg



CAGLIO TRC 2500 Guillotine

Cutting width

Note: Machine not connected, not checked, inspection recommended. 2500

Item number: 747757, Manufacturer: CAGLIO, Model / Type: TRC 2500, Item available from: Immediately, Item condition: unchecked, Delivery terms: FCA LA GARRIGA, loaded on truck, Payment terms: 100% payment prior to collection, dimensions (l x w x h) approx.: 3,400 x 2,500 x 1,700 mm, weight approx.: 3,400 kg



ARGEMI COPI 200 Spindle Moulder

Floating adaptable Axis
Template with curves: Max. 200 mm
Working table area: 1000 mm
4 spindle speeds
Motor power: 5,5kw

Note: Machine not connected, not checked, inspection recommended.

Item number: 747751, Manufacturer: ARGEMI, Model / Type: COPI 200, Year of manufacture: 1996, Item available from: Immediately, Item condition: unchecked, Delivery terms: FCA LA GARRIGA, loaded on truck, Payment terms: 100% payment prior to collection, dimensions (l x w x h) approx.: 2,200 x 1,100 x 1,500 mm, weight approx.: 1,300 kg



Lot of Pallet Racks

Lot of pallet racks, composed of:

190 bemas of 2450 mm
20 frames of 5000 x 1100 mm

Item number: 766908, Item condition: unchecked, Delivery terms: EXW Sestao, ex foundation, unpackaged, Payment terms: 100% payment prior to collection, dimensions (l x w x h) approx.: 49,000 x 1,100 x 5,000 mm, weight approx.: 10,000 kg