

Auction Catalogue

GRAND Selection of Construction Machinery - (Spain)

Viewing by appointment only!

Main location: Logroño-Hormilla
For the inspection please contact Nancy Castañeda
nancy.castaneda@surplex.com

76 lots

Bidding ends:

Thursday, 06/10/2022, 15:00(local time)

Bids are welcome immediately and can be placed at:

Contact:

Nancy Castañeda
+34 936393895
nancy.castaneda@surplex.com
www.surplex.com

Viewing:

Viewing by appointment only!

Main location: Logroño-Hormilla
For the inspection please contact Nancy Castañeda
nancy.castaneda@surplex.com

Monday, **03/10/2022**, from 09:00 to 18:00

Tuesday, **04/10/2022**, from 09:00 to 18:00

Wednesday, **05/10/2022**, from 09:00 to 18:00

Description:

GRAND Selection of Construction Machinery

Important manufacturers such as VOLVO, CATERPILLAR, IVECO, etc.

1. The item list is being continuously updated - please check back regularly!
2. Articles mainly located in our Yard Logroño-Hormilla.

The buyers Premium is variable as follows:

From 0 Eur to 10.000 Eur: 15%

From 10.001 to 25.000 Eur: 8% buyer fees

From 25.001 to end: 5% buyer fees

IMPORTANT NOTE:

Surplex reserves the right to request a deposit in order to participate in the auction.



MERCEDEZ BENZ UNIMOG U 300 Utility Truck with Accesories

Model: 405120
Variant: WDB405120
Registration number: 4788-DZZ
Chassis: WD4051201V209686
Fuel: Diesel 135litres
ADBlue tank: 25litres
Hopper load capacity: 1000
Tyres: 365/80 R20 141/144G
Seats: 2
Displacement: 4/4249cm3

Power: 130kw
Speed: 2200rpm
Max. Torque: 675
Overhang: 870mm
Wheelbase: 3600mm

Dual-circuit hydraulic system with proportional control
Proportional control, circuit I/II, with 24/48 l/min flow rate and operating pressure 200/240 bar
Working hours: 1686kms
MOT 11.05.22

CE Mirror Certificate
CE Certificate
Includes:

Hydraulic front brushcutter FME 600 (2005), Serial Number: 05S02020497, Weight 1120kg

Max. height 7.2m
Lateral movement: 1300mm, Rotation: 240°.
Counterweight Support

Road and Tunnel Maintenance System
Ice Maintenance System
Water Tank

IMPORTANT:

The customer is responsible for all the loading related to the equipment.

Dimensions and weights are approximate.

Item number: 744954, Manufacturer: MERCEDEZ BENZ, Model / Type: UNIMOG U 300, Year of manufacture: 2006, Item available from: immediately, Item condition: unchecked, Delivery terms: EXW Hormilla, La Rioja, ex foundation, unpackaged, Payment terms: 100% payment prior to collection, dimensions (l x w x h) approx.: 5,620 x 2,150 x 2,830 mm, weight approx.: 5,000 kg



GENIE S-85 4WD Articulated Boom Lift

Serial Number: 1730
Working height : 2790mm
Horizontal reach: 2330
Lift capacity: 227kgs
Platform rotation 160°
Turntable Rotation: 360°
Working Hours: 3248

IMPORTANT:

The customer is responsible for all the loading related to the equipment.
Dimensions and weights are approximate.

Item number: 746135, Manufacturer: GENIE, Model / Type: S-85 4WD, Year of manufacture: 2000,
Item available from: Immediately, Item condition: unchecked, Delivery terms: EXW Hormilla (La
Rioja) | ES, ex foundation, unpackaged, Payment terms: 100% payment prior to collection,
dimensions (l x w x h) approx.: 10,670 x 3,070 x 2,800 mm, weight approx.: 16,700 kg



CATERPILLAR 950 M Wheel Loader

Serial number CAT0950MAFTR00660
YOM: 2016
Weight 19000 Kg
Standard tires 23.5 R25
Bucket width 3 m
Standards bucket capacity 3.6 m³
Steering type: KL
Max. Speed: 39.5 km/h
Max pouring height: 2.79 m
Caterpillar engine
Engine model C7.1

Total power 186 kW
Hours of work according to meter: 9289 h
With air conditioning
CE Standards

IMPORTANT:

The customer is responsible for all the loading related to the equipment.
Dimensions and weights are approximate.

Item number: 767206, Manufacturer: CATERPILLAR, Model / Type: 950 M, Year of manufacture:
2016, Item available from: immediately, Item condition: unchecked, Delivery terms: EXW Hormilla
(La Rioja), ex foundation, unpackaged, Payment terms: 100% payment prior to collection,
dimensions (l x w x h) approx.: 6,900 x 2,800 x 3,500 mm, weight approx.: 19,000 kg



POWER TOWERS Electric Vertical Mast

Serial Number: 7791509A
Weight: 315kgs
Working Load: 250kgs
Working Height: 5100mm
Maximum Platform Height: 3100mm
Platform Dimensions: 1520mm
No. Persons + allowance: 1 pax + 170kg
Maximun force: 200N
Indoor use only
CE Standard

IMPORTANT:

The customer is responsible for all the loading related to the equipment.
Dimensions and weights are approximate.

Item number: 746535, Manufacturer: POWER TOWERS, Year of manufacture: 2009, Item available
from: Immediately, Item condition: unchecked, Delivery terms: EXW Hormilla (La Rioja), ex
foundation, unpackaged, Payment terms: 100% payment prior to collection, dimensions (l x w x h)
approx.: 1,520 x 780 x 1,920 mm, weight approx.: 315 kg



POWER TOWERS Electric Vertical Mast

Serial Number: 11775009A
Weight: 315kgs
Max. Working Height: 5100mm
Max. Platform Height: 3100mm
Platform dimensions: 1520x650mm
Working Load: 250kgs
No. Persons + allowance: 1 pax + 170kg
Maximun force: 200N
CE Standard

IMPORTANT:

The customer is responsible for all the loading related to the equipment.
Dimensions and weights are approximate.

Item number: 746546, Manufacturer: POWER TOWERS, Year of manufacture: 2009, Item available from: Immediately, Item condition: unchecked, Delivery terms: FCA Hormilla (La Rioja), free on truck, Payment terms: 100% payment prior to collection, dimensions (l x w x h) approx.: 1,520 x 780 x 1,920 mm, weight approx.: 315 kg



POWER TOWERS NANO Electric Vertical Mast

Serial Number: 9684311C
Max. Working Height: 4500mm
Max. Platform Height: 2500mm
Closed Platform Height: 360mm
Platform dimensions: 1000x730mm
Weight: 285kg
Payload: 200kg
No. Pax. + allowance: 1 pax +120kg
Max. Manual Force: 200N
Indoor use only

CE Standard

IMPORTANT:

The customer is responsible for all the loading related to the equipment.
Dimensions and weights are approximate.

Item number: 746545, Manufacturer: POWER TOWERS, Model / Type: NANO, Year of manufacture: 2011, Item available from: Immediately, Item condition: unchecked, Delivery terms: EXW Hormilla (La Rioja), ex foundation, unpackaged, Payment terms: 100% payment prior to collection, dimensions (l x w x h) approx.: 1,195 x 750 x 1,560 mm, weight approx.: 285 kg



POWER TOWERS NANO Electrical Vertical Mast

Serial Number: 10074411C
Weight: 285kg
Working Load: 200kg
Max. Working Height: 4500mm
Max. Platform Height: 2500mm
Closed Platform Height: 360mm
Platform dimensions: 1000x730mm
No. Pax + allowance: 1 pax +120kg
Indoor use only
Max. Manual Force: 200N

CE Standard

IMPORTANT:

The customer is responsible for all the loading related to the equipment.

Dimensions and weights are approximate.

Item number: 746543, Manufacturer: POWER TOWERS, Model / Type: NANO, Year of manufacture: 2011, Item available from: Immediately, Item condition: unchecked, Delivery terms: EXW Hormilla (La Rioja), ex foundation, unpackaged, Payment terms: 100% payment prior to collection, dimensions (l x w x h) approx.: 1,195 x 750 x 1,560 mm, weight approx.: 285 kg



DOOSAN MEGA 500 V Wheel Loader

- Serial number 2046
- Standard tires 29.5 R25
- Bucket width 3480 mm
- Standards bucket capacity 4.80 m³
- Steering type AL
- Maximum Speed 35 km/h
- Maximum pouring height 3100 mm
- Lifting power 264 kN
- CUMMINS QSM11 engine: displacement 10800 cc, power 250 KW
- Working hours according to meter 16500
- CE Standards

IMPORTANT:

The customer is responsible for all the loading related to the equipment.

Dimensions and weights are approximate.

Item number: 755205, Manufacturer: DOOSAN, Model / Type: MEGA 500 V, Year of manufacture: 2006, Item available from: Immediately, Item condition: in working order, Delivery terms: EXW Hormilla (La Rioja), ex foundation, unpackaged, Payment terms: 100% payment prior to collection, dimensions (l x w x h) approx.: 9,320 x 3,210 x 3,800 mm, weight approx.: 29,800 kg



DOOSAN MEGA 250 V Wheel Loader

- Serial number AB0C65004195
- Standard tires 20.5 R25
- Bucket width 2740 mm
- Standards bucket capacity 2.40 m³
- Steering type KL
- Maximum Speed 37 km/h
- Maximum pouring height 2730 mm
- Lifting power 129 kN
- DAEWOO DB 58 TIS engine: displacement 5800 cc, power 121 KW
- Working hours according to meter 12500
- CE Standards

IMPORTANT: MACHINE IN TRANSIT

The customer is responsible for all the loading related to the equipment.

Dimensions and weights are approximate.

Item number: 755204, Manufacturer: DOOSAN, Model / Type: MEGA 250 V, Year of manufacture: 2007, Item available from: Immediately, Item condition: in working order, Delivery terms: EXW Hormilla (La Rioja), ex foundation, unpackaged, Payment terms: 100% payment prior to collection, dimensions (l x w x h) approx.: 7,500 x 2,570 x 3,290 mm, weight approx.: 13,800 kg



RICARDO R60 Diesel Generator

Serial Number: 978138
Silent Static Diesel Generator
Power: 60KVAS
Unused

IMPORTANT:

The buyer is responsible for all cargo related to the equipment.
Dimensions and weights are approximate.

Item number: 767438, Manufacturer: RICARDO, Model / Type: R60, Year of manufacture: 2019, Item available from: immediately, Item condition: unchecked, Delivery terms: EXW Hormilla (La Rioja), ex foundation, unpackaged, Payment terms: 100% payment prior to collection, dimensions (l x w x h) approx.: 2,800 x 1,590 x 1,100 mm, weight approx.: 1,500 kg



RICARDO R60 Generator Diesel

Serial Number: 981324
Silent Static Diesel Generator
Power: 60KVAS
Unused

IMPORTANT:

The buyer is responsible for all cargo related to the equipment.
Dimensions and weights are approximate.

Item number: 767437, Manufacturer: RICARDO, Model / Type: R60, Year of manufacture: 2019, Item available from: immediately, Item condition: unchecked, Delivery terms: EXW Hormilla (La Rioja), ex foundation, unpackaged, Payment terms: 100% payment prior to collection, dimensions (l x w x h) approx.: 2,210 x 950 x 1,300 mm, weight approx.: 1,500 kg



CATERPILLAR D7E Bulldozer & grader

Serial number: CAT00D7ELHKA00504
YOM: 2017
Weight 27,351 Kg
Blade type: SU
Blade width 3713 mm
Ground pressure 0.69 kg/cm²
3 tooth ripper
Maximum penetration: 650mm
Track width: 660 mm
Top speed: 10.5km/h
Caterpillar engine

Engine Model: C9.3 Acert
Total power: 198 kW
Displacement 9.3 L
Fuel tank: 409 L
Working hours according to the counter: 4643 h

With rear view camera
With air conditioning

CE Standards
IMPORTANT:

The customer is responsible for all the loading related to the equipment.
Dimensions and weights are approximate.

Item number: 767208, Manufacturer: CATERPILLAR, Model / Type: D7E, Year of manufacture: 2017,
Item available from: immediate, Item condition: unchecked, Delivery terms: EXW Hormilla (La Rioja),
ex foundation, unpackaged, Payment terms: 100% payment prior to collection, dimensions (l x w x
h) approx.: 4,610 x 2,880 x 3,360 mm, weight approx.: 27,351 kg



IVECO EURO CARGO ML 140E25 Tank Truck

Identification: ZCFA1JJ03025000207
Plate: 4982-FLK
IMPORTANT: MACHINE IN TRANSIT

The customer is responsible for all the loading related to the equipment.
Dimensions and weights are approximate.

Item number: 768393, Manufacturer: IVECO, Model / Type: EURO CARGO ML 140E25, Item available
from: Immediately, Item condition: unchecked, Delivery terms: EXW Hormilla (La Rioja), ex
foundation, unpackaged, Payment terms: 100% payment prior to collection, dimensions (l x w x h)
approx.: 6,000 x 2,400 x 3,000 mm, weight approx.: 13,000 kg



BOMAG BW80AD-2 Tandem Roller

Serial Number: 101460423195
IMPORTANT:

The customer is responsible for all the loading related to the equipment.
Dimensions and weights are approximate.

Item number: 746140, Manufacturer: BOMAG, Model / Type: BW80AD-2, Year of manufacture:
2006, Item available from: Immediately, Item condition: unchecked, Delivery terms: EXW Hormilla
(La Rioja) | ES, ex foundation, unpackaged, Payment terms: 100% payment prior to collection,
dimensions (l x w x h) approx.: 2,000 x 1,000 x 1,200 mm, weight approx.: 2,000 kg



DYNAPAC CC102 Tandem Roller

Serial Number: 60114302
Power: 20w
Weight: 2300kg
Working Hours: 3294

IMPORTANT:

The customer is responsible for all the loading related to the equipment.
Dimensions and weights are approximate.

Item number: 746136, Manufacturer: DYNAPAC, Model / Type: CC102, Year of manufacture: 1999,
Item available from: Immediately, Item condition: unchecked, Delivery terms: EXW Hormilla (La
Rioja) | ES, ex foundation, unpackaged, Payment terms: 100% payment prior to collection,
dimensions (l x w x h) approx.: 2,450 x 1,180 x 2,640 mm, weight approx.: 2,350 kg



IVECO EURO CARGO ML 140E25 Tank Truck

Identification: ZCFA1JJ0302500206
Plate: 4985-FLK
IMPORTANT: MACHINE IN TRANSIT

The customer is responsible for all the loading related to the equipment.
Dimensions and weights are approximate.

Item number: 768392, Manufacturer: IVECO, Model / Type: EURO CARGO ML 140E25, Item available from: Immediately, Item condition: unchecked, Delivery terms: EXW Hormilla (La Rioja), ex foundation, unpackaged, Payment terms: 100% payment prior to collection, dimensions (l x w x h) approx.: 6,000 x 2,400 x 3,000 mm, weight approx.: 13,000 kg



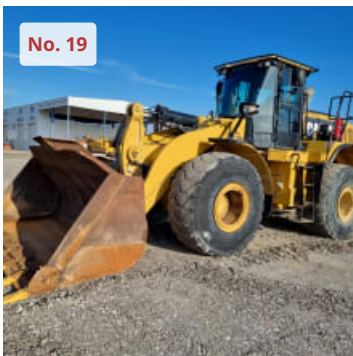
GENIE S-85 4WD Articulated Boom Lift

Serial Number:S85-2525
Working height : 2790mm
Horizontal reach: 2330
Lift capacity: 227kgs
Platform rotation 160°
Turntable Rotation: 360°
Working Hours: 7797

IMPORTANT:

The customer is responsible for all the loading related to the equipment.
Dimensions and weights are approximate.

Item number: 746139, Manufacturer: GENIE, Model / Type: S-85 4WD, Year of manufacture: 2001, Item available from: Immediately, Item condition: unchecked, Delivery terms: EXW Hormilla (La Rioja) | ES, ex foundation, unpackaged, Payment terms: 100% payment prior to collection, dimensions (l x w x h) approx.: 10,670 x 3,070 x 2,800 mm, weight approx.: 16,700 kg



CATERPILLAR 966K XE Loader

Serial number CAT0966KKNX00231
YOM: 2013
Weight 24000 Kg
Standard tires 26.5 R25
Bucket width 3.22 m
Standards bucket capacity 4.2 m³
Steering type: KL
Max. Speed: 37.4 km/h
Max pouring height: 4,234m
Lifting power: 173 kN
Caterpillar engine

Engine model C9 Acert
Total power 250 kW
Hours of work according to meter: 12,393 h
With air conditioning
CE Standards

IMPORTANT:

The customer is responsible for all the loading related to the equipment.
Dimensions and weights are approximate.

Item number: 767204, Manufacturer: CATERPILLAR, Model / Type: 966K XE, Year of manufacture: 2013, Item available from: immediate, Item condition: unchecked, Delivery terms: EXW Hormilla (La Rioja), ex foundation, unpackaged, Payment terms: 100% payment prior to collection, dimensions (l x w x h) approx.: 9,000 x 3,000 x 4,000 mm, weight approx.: 24,000 kg



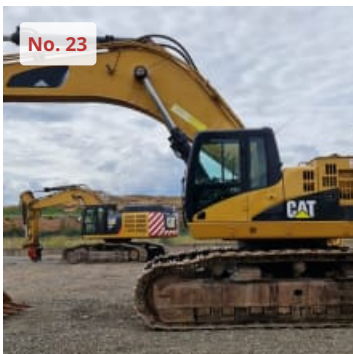
VOLVO A40D Articulated Dumptruck

Identification Number: A40DV14027
6x6
Tail Gate
AutoLube
Reverse Camera
A/C
Working Hours 19.324

IMPORTANT: MACHINE IN TRANSIT

The customer is responsible for all the loading related to the equipment.
Dimensions and weights are approximate.

Item number: 767079, Manufacturer: VOLVO, Model / Type: A40D, Year of manufacture: 2007, Item available from: Immediately, Item condition: unchecked, Delivery terms: EXW Hormilla (La Rioja), ex foundation, unpackaged, Payment terms: 100% payment prior to collection, dimensions (l x w x h) approx.: 11,300 x 3,750 x 3,430 mm, weight approx.: 31,270 kg



CATERPILLAR 365 C Hydraulic Excavator

- Serial number CAT0365CAMCY00398
- Track width 650 mm
- Standards bucket capacity 4 m³
- Boom MB
- Maximum horizontal reach 10840 mm
- Digging depth 6750 mm
- Tear-out force 277 kN
- CATERPILLAR 3196 engine: displacement 12000 cc, power 301 KW
- Working hours according to meter 12100
- CE Standards

IMPORTANT:

The customer is responsible for all the loading related to the equipment.
Dimensions and weights are approximate.

Item number: 755201, Manufacturer: CATERPILLAR, Model / Type: 365 C, Year of manufacture: 2007, Item available from: Immediately, Item condition: in working order, Delivery terms: EXW Hormilla (La Rioja), ex foundation, unpackaged, Payment terms: 100% payment prior to collection, dimensions (l x w x h) approx.: 12,100 x 3,500 x 3,540 mm, weight approx.: 71,900 kg



JCB 65R-1 Mini Excavator

Identification Number: JCB065R1TG1914411
Aux hydraulic
Dozer
Rubber tracks
Swing-away boom
Working Hours: 6742

IMPORTANT:

The customer is responsible for all the loading related to the equipment.

Dimensions and weights are approximate.

Item number: 767347, Manufacturer: JCB, Model / Type: 65R-1, Year of manufacture: 2016, Item available from: Immediately, Item condition: unchecked, Delivery terms: EXW Hormilla (La Rioja), ex foundation, unpackaged, Payment terms: 100% payment prior to collection, dimensions (l x w x h) approx.: 5,700 x 2,000 x 2,580 mm, weight approx.: 6.750 kg



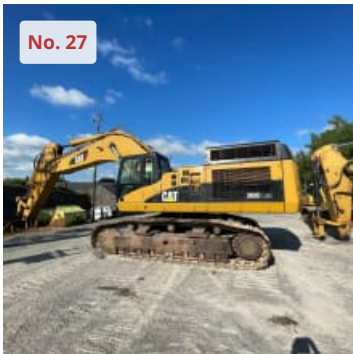
JCB 3CX Loader Backhoe

Identification Number: SLP3CXTS3E0938718
Plate: E5182BCG
4-in-bucket with forks
Extendable hoe
Working hours: 6.068

IMPORTANT:

The customer is responsible for all the loading related to the equipment.
Dimensions and weights are approximate.

Item number: 767348, Manufacturer: JCB, Model / Type: 3CX, Year of manufacture: 2003, Item available from: Immediately, Item condition: unchecked, Delivery terms: EXW Hormilla (La Rioja), ex foundation, unpackaged, Payment terms: 100% payment prior to collection, dimensions (l x w x h) approx.: 7,500 x 2,440 x 4,100 mm, weight approx.: 8,000 kg



CATERPILLAR 365 C Hydraulic Excavator

- Serial number CAT0365CEMCY00227
- Track width 650 mm
- Standards bucket capacity 4 m³
- Boom MB
- Maximum horizontal reach 10840 mm
- Digging depth 6750 mm
- Tear-out force 277 kN
- CATERPILLAR 3196 engine: displacement 12000 cc, power 301 KW
- Working hours according to meter 14730
- CE Standards

IMPORTANT: MACHINE IN TRANSIT

The customer is responsible for all the loading related to the equipment.
Dimensions and weights are approximate.

Item number: 755203, Manufacturer: CATERPILLAR, Model / Type: 365 C, Year of manufacture: 2006, Item available from: Immediately, Item condition: in working order, Delivery terms: EXW Hormilla (La Rioja), ex foundation, unpackaged, Payment terms: 100% payment prior to collection, dimensions (l x w x h) approx.: 12,100 x 3,500 x 3,540 mm, weight approx.: 71,900 kg



CATERPILLAR 352 F Hydraulic Excavator

- Serial number CAT0352FAKBP00264
- Track width 600 mm
- Standards bucket capacity 2.41 m³
- Boom MB
- Maximum Speed 4.70 km/h
- Maximum horizontal reach 11210 mm
- Digging depth 7060 mm
- Tear-out force 268 kN
- CATERPILLAR C13 ACERT engine: displacement 12500 cc, power 317 KW
- Working hours according to meter 14500
- CE Standards

IMPORTANT: EN TRANSITO

The customer is responsible for all the loading related to the equipment.
Dimensions and weights are approximate.

Item number: 755202, Manufacturer: CATERPILLAR, Model / Type: 352 F, Year of manufacture: 2015, Item available from: Immediately, Item condition: in working order, Delivery terms: EXW Hormilla (La Rioja), ex foundation, unpackaged, Payment terms: 100% payment prior to collection, dimensions (l x w x h) approx.: 12,000 x 3,680 x 3,690 mm, weight approx.: 51,700 kg



VOLVO L90F Wheel Loader

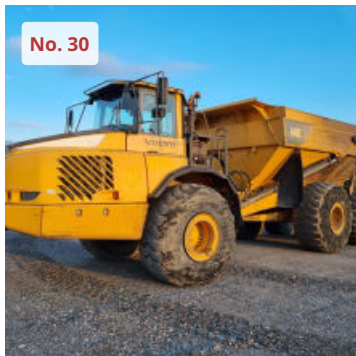
Identification Number: VCE0L90FC00026477
Mileage: 16416
Standard tires: 20.5 R25
Bucket width: 2650 mm
Bucket capacity: 2.5 m³
Shovel capacity min.: 2.5 m³
Steering type: KL
Speed: 40 km/h
Max dumping height: .2.85 m
Outer turning radius: 5.92 m

Lifting power: 118.5 kN
Motor model: D 6 DLAE 3
Engine output: 128 kW
Engine speed: 1600 rpm
No. of cylinders: 5

IMPORTANT:

The customer is responsible for all the loading related to the equipment.
Dimensions and weights are approximate.

Item number: 759294, Manufacturer: VOLVO, Model / Type: L90F, Year of manufacture: 2008, Item available from: Immediately, Item condition: unchecked, Delivery terms: EXW Hormilla (La Rioja), ex foundation, unpackaged, Payment terms: 100% payment prior to collection, dimensions (l x w x h) approx.: 7,510 x 2,490 x 3,280 mm, weight approx.: 17,100 kg



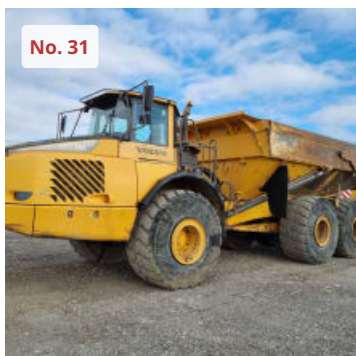
VOLVO A40E Articulated Dumptruck

Identification Number: VCE0A40EP00011452
Working Hours 18.241
6x6
Tail Gate
AutoLube
Reverse Camera
A/C

IMPORTANT:

The customer is responsible for all the loading related to the equipment.
Dimensions and weights are approximate.

Item number: 767074, Manufacturer: VOLVO, Model / Type: A40E, Year of manufacture: 2008, Item available from: Immediately, Item condition: unchecked, Delivery terms: EXW Hormilla (La Rioja), ex foundation, unpackaged, Payment terms: 100% payment prior to collection, dimensions (l x w x h) approx.: 11,300 x 3,750 x 3,430 mm, weight approx.: 30,200 kg



VOLVO A40E Articulated Dumptruck

Identification Number: VCE0A40EE00011544
6x6
Tail Gate
AutoLube
Reverse Camera, A/C
Working Hours 21.065

IMPORTANT:

The customer is responsible for all the loading related to the equipment.
Dimensions and weights are approximate.

Item number: 767076, Manufacturer: VOLVO, Model / Type: A40E, Year of manufacture: 2008, Item available from: Immediately, Item condition: unchecked, Delivery terms: EXW Hormilla (La Rioja), ex foundation, unpackaged, Payment terms: 100% payment prior to collection, dimensions (l x w x h) approx.: 11,300 x 3,750 x 3,430 mm, weight approx.: 30,200 kg



RENAULT M220.14C Maintenance Truck 4x2

Identification: VF644ACA000001009
Plate: 6175-BSV
MPORTANT: MACHINE IN TRANSIT

The customer is responsible for all the loading related to the equipment.
Dimensions and weights are approximate.

Item number: 768391, Manufacturer: RENAULT, Model / Type: M220.14C, Item available from: Immediately, Item condition: unchecked, Delivery terms: EXW Hormilla (La Rioja), ex foundation, unpackaged, Payment terms: 100% payment prior to collection, dimensions (l x w x h) approx.: 6,000 x 2,400 x 3,000 mm, weight approx.: 13,000 kg



IVECO STRALIS 500 (AS440t/P) Truck 4x2

Identification Number:WJMM1VUH60C314146
Plate: 4531JDZ
ZF intarder
Dual Fuel Tank
AdBlue
Automatic
A/R cab
A/R susp
Working Hours: 620752

IMPORTANT:

The customer is responsible for all the loading related to the equipment.
Dimensions and weights are approximate.

Item number: 767418, Manufacturer: IVECO, Model / Type: STRALIS 500 4x2 (AS440t/P), Year of manufacture: 2015, Item available from: immediately, Item condition: unchecked, Delivery terms: EXW Hormilla (La Rioja), ex foundation, unpackaged, Payment terms: 100% payment prior to collection, dimensions (l x w x h) approx.: 6,250 x 3,310 x 2,550 mm, weight approx.: 6,855 kg



IVECO STRALIS 480 4x2 (AS440t/P) Truck 4x2

Identification Number: WJMM1VUH60C334086
Plate:1516JMZ
ZF intarder
Dual Fuel Tank
AdBlue
Automatic
A/R cab
A/R susp
Working Hours: 553924

IMPORTANT:

The customer is responsible for all the loading related to the equipment.
Dimensions and weights are approximate.

Item number: 767417, Manufacturer: IVECO, Model / Type: STRALIS 480 4x2 (AS440t/P), Year of manufacture: 2016, Item available from: immediately, Item condition: unchecked, Delivery terms: EXW Hormilla (La Rioja), ex foundation, unpackaged, Payment terms: 100% payment prior to collection, dimensions (l x w x h) approx.: 6,250 x 3,310 x 2,550 mm, weight approx.: 6,855 kg



GENIE GS3384 Scissorlift

12m
4x4
Could not verify hours
IMPORTANT: MACHINE IN TRANSIT

The customer is responsible for all the loading related to the equipment.
Dimensions and weights are estimated.

Item number: 768616, Manufacturer: GENIE, Model / Type: GS3384, Year of manufacture: 2007, Item available from: Immediately, Item condition: unchecked, Delivery terms: EXW Hormilla (La Rioja), ex foundation, unpackaged, Payment terms: 100% payment prior to collection, dimensions (l x w x h) approx.: 4,000 x 2,130 x 2,000 mm, weight approx.: 5,816 kg



TOYOTA 8FBMKT25 Electric Forklift

Forks
Side shift
Duplex mast
Long mast

IMPORTANT: MACHINE IN TRANSIT

The customer is responsible for all the loading related to the equipment.
Dimensions and weights are estimated.

Item number: 768601, Manufacturer: TOYOTA, Model / Type: 8FBMKT25, Year of manufacture: 2014, Item available from: Immediately, Item condition: unchecked, Delivery terms: EXW Hormilla (La Rioja), ex foundation, unpackaged, Payment terms: 100% payment prior to collection, loading capacity: 2,500 to, lifting height: 4,500 mm, dimensions (l x w x h) approx.: 3,300 x 1,195 x 2,900 mm, weight approx.: 3,420 kg



HIMOINSA MOV-INS 060kva Gen Set

60Kva
3496h

IMPORTANT: MACHINE IN TRANSIT

The customer is responsible for all the loading related to the equipment.
Dimensions and weights are estimated.

Item number: 768603, Manufacturer: HIMOINSA, Model / Type: MOV-INS 060kva, Year of manufacture: 2002, Item available from: Immediately, Item condition: unchecked, Delivery terms: EXW Hormilla (La Rioja), ex foundation, unpackaged, Payment terms: 100% payment prior to collection, dimensions (l x w x h) approx.: 2,810 x 1,050 x 1,560 mm, weight approx.: 1,800 kg



CATERPILLAR 950B Wheel Loader

Serial Number: 63R05720

IMPORTANT: MACHINE IN TRANSIT

The customer is responsible for all the loading related to the equipment.
Dimensions and weights are approximate.

Item number: 767406, Manufacturer: CATERPILLAR, Model / Type: 950B, Year of manufacture: 1987, Item available from: Immediately, Item condition: unchecked, Delivery terms: EXW Hormilla (La Rioja), ex foundation, unpackaged, Payment terms: 100% payment prior to collection, dimensions (l x w x h) approx.: 7,240 x 3,470 x 2,740 mm, weight approx.: 14,700 kg



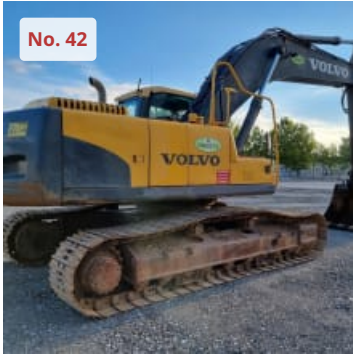
JCB 4CX Backhoe Loader

Identification Number: JCB4CXPC60974539
Plate: E3542BDS
Working Hours: 12.000
6 in1 Bucket
Quick Hitch
A/C
Joystick controls
Spanish Reg. Docs

IMPORTANT:

The customer is responsible for all the loading related to the equipment.
Dimensions and weights are approximate.

Item number: 767407, Manufacturer: JCB, Model / Type: 4CX, Year of manufacture: 2006, Item available from: Immediately, Item condition: unchecked, Delivery terms: EXW Hormilla (La Rioja), ex foundation, unpackaged, Payment terms: 100% payment prior to collection, dimensions (l x w x h) approx.: 5,910 x 3,620 x 2,360 mm, weight approx.: 8,850 kg



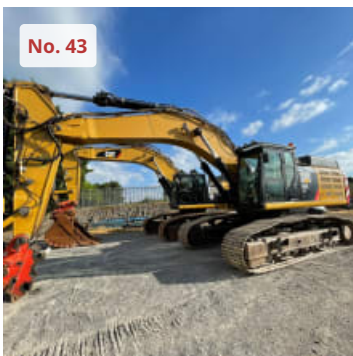
VOLVO EC290CNL Excavator

Serial Number: VCEC290CL00110464
Working Hours: 11331
Volvo D7E EAE3 engine
Maximum power at 30 r/s: (1 800 r/min)
Net Power: (ISO 9249, SAE J1349) 143 kW (195 hp)
Gross Power: (SAE J1995) 153 kW (208 hp)
Max. torque at 1 350 r/min 965 Nm (965 Nm)
No. of cylinders: 6
Displacement 7.14 l
Bore 108 mm
Stroke 130 mm
Boom: 6.2m
Arm: 2.55m
Bucket: 1240 (975kg) and counterweight

IMPORTANT:

The customer is responsible for all the loading related to the equipment.
Dimensions and weights are approximate.

Item number: 739196, Manufacturer: VOLVO, Model / Type: EC290CNL, Year of manufacture: 2008, Item available from: Immediately, Item condition: unchecked, Delivery terms: EXW Hormilla (La Rioja), ex foundation, unpackaged, Payment terms: 100% payment prior to collection, dimensions (l x w x h) approx.: 10,500 x 2,990 x 5,430 mm, weight approx.: 30,380 kg



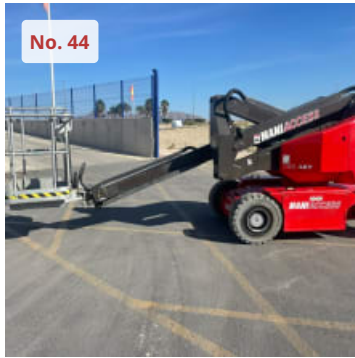
CATERPILLAR 349 ELME Hydraulic Excavator

- Serial number CAT0349EJKFX00700
- Track width 600 mm
- Boom MB
- Maximum Speed 4.70 km/h
- Maximum horizontal reach approx. 10700 mm
- Digging depth approx. 6700 mm
- CATERPILLAR C13 ACERT engine: displacement 12500 cc, power 317 KW
- Working hours according to meter 10200
- CE Standards

IMPORTANT: MACHINE IN TRANSIT

The customer is responsible for all the loading related to the equipment.
Dimensions and weights are approximate.

Item number: 755207, Manufacturer: CATERPILLAR, Model / Type: 349 ELME, Year of manufacture: 2015, Item available from: Immediately, Item condition: in working order, Delivery terms: EXW Hormilla (La Rioja), ex foundation, unpackaged, Payment terms: 100% payment prior to collection, dimensions (l x w x h) approx.: 11,920 x 3,340 x 3,800 mm, weight approx.: 52,200 kg



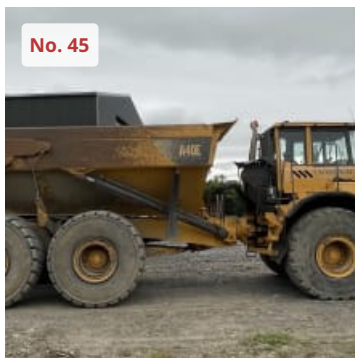
MANITOU 150 AET Electric Boom Lift

Odometer not working
Working Height: 15 mtrs

IMPORTANT: MACHINE IN TRANSIT

The customer is responsible for all the loading related to the equipment.
Dimensions and weights are estimated.

Item number: 768602, Manufacturer: MANITOU, Model / Type: 150 AET, Year of manufacture: 1999, Item available from: Immediately, Item condition: unchecked, Delivery terms: EXW Hormilla (La Rioja), ex foundation, unpackaged, Payment terms: 100% payment prior to collection, dimensions (l x w x h) approx.: 5,600 x 1,500 x 1,950 mm, weight approx.: 7,100 kg



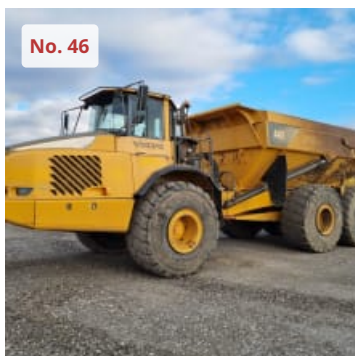
VOLVO A40E Articulated Dumptruck

Identification Number: VCE0A40ET00011546
Working Hours: 18.119
6x6
Tail Gate
AutoLube
Reverse Camera
A/C

IMPORTANT: MACHINE IN TRANSIT

The customer is responsible for all the loading related to the equipment.
Dimensions and weights are approximate.

Item number: 767073, Manufacturer: VOLVO, Model / Type: A40E, Year of manufacture: 2008, Item available from: Immediately, Item condition: unchecked, Delivery terms: EXW Hormilla (La Rioja), ex foundation, unpackaged, Payment terms: 100% payment prior to collection, dimensions (l x w x h) approx.: 11,300 x 3,750 x 3,430 mm, weight approx.: 30,200 kg



VOLVO A40E Articulated Dumptruck

Identification Number: VCE0A40EK00011548
6x6
Tail Gate
AutoLube
Reverse Camera
A/C
Working Hours 18.433

IMPORTANT:

The customer is responsible for all the loading related to the equipment.
Dimensions and weights are approximate.

Item number: 767077, Manufacturer: VOLVO, Model / Type: A40E, Year of manufacture: 2008, Item available from: Immediately, Item condition: unchecked, Delivery terms: EXW Hormilla (La Rioja), ex foundation, unpackaged, Payment terms: 100% payment prior to collection, dimensions (l x w x h) approx.: 11,300 x 3,750 x 3,430 mm, weight approx.: 30,200 kg



JCB JS130LC T4 Crawler Excavator

Identification Number: JCBJS13EL02134214
700mm Pads
VG, CV, QH Piped
Aux. Piping
Reverse Camera, A/C
Working Hours 7.000

IMPORTANT: MACHINE IN TRANSIT

The customer is responsible for all the loading related to the equipment.

Dimensions and weights are approximate.

Item number: 767075, Manufacturer: JCB, Model / Type: JS130LC T4, Year of manufacture: 2014, Item available from: Immediately, Item condition: unchecked, Delivery terms: EXW Hormilla (La Rioja), ex foundation, unpackaged, Payment terms: 100% payment prior to collection, dimensions (l x w x h) approx.: 7,510 x 3,000 x 2,590 mm, weight approx.: 13,625 kg



VOLVO EC140DL Crawler Excavator

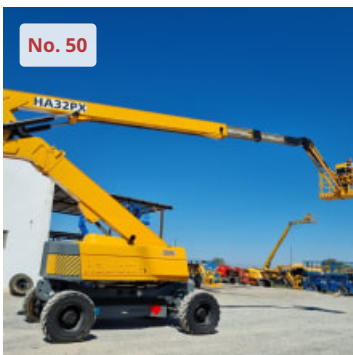
Identification Number: VCEC140DL00211034
700mm Pads, CV, VG, QH,
Piped
Reverse Camera,
A/C
Working Hours 9.938

IMPORTANT: MACHINE IN TRANSIT

The customer is responsible for all the loading related to the equipment.

Dimensions and weights are approximate.

Item number: 767078, Manufacturer: VOLVO, Model / Type: EC140DL, Year of manufacture: 2015, Item available from: Immediately, Item condition: unchecked, Delivery terms: EXW Hormilla (La Rioja), ex foundation, unpackaged, Payment terms: 100% payment prior to collection, dimensions (l x w x h) approx.: 7,700 x 2,800 x 2,590 mm, weight approx.: 14,390 kg



HAULOTTE HA32PX Boom Lift

Serial Number: A0107922
YOM: 2004
Nacelle
Type: HA32PX
Working Height: 31800 mm
Platform height: 29800 mm
Platform size: 2440x800 mm
Horizontal outreach: 21300 mm
Max. loading weight: 250kg
Capacity + loading: 2pax + 90kg

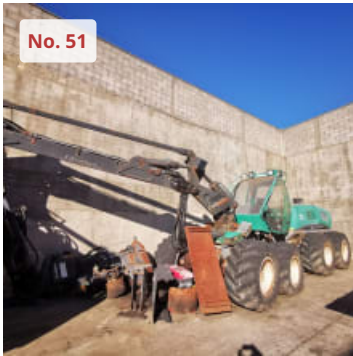
Max. Force: 400N
Max. Speed 16/5 m/s
Inclination: 5 degrees
Vertical jib rotation: +/- 70°
Platform rotation +/-90°

Pendiente ascendible max. 45%
Nominal Power: 64kwN

IMPORTANT:

The customer is responsible for all the loading related to the equipment.
Dimensions and weights are approximate.

Item number: 759796, Manufacturer: HAULOTTE, Model / Type: HA32PX, Year of manufacture: 2004, Item available from: immediately, Item condition: unchecked, Delivery terms: EXW Vilanova de la Barca, Lérida, ex foundation, unpackaged, Payment terms: 100% payment prior to collection, dimensions (l x w x h) approx.: 11,600 x 2,500 x 3,300 mm, weight approx.: 21,100 kg



SILVATEC SLEIPNER 8266 TH Forest Harvester

Serial number AC655
Engine power 205 KW
Crane LOGLIFT L220V 100A
Load capacity approx. 4000 kg
Working hours approx. 16000

This machine has been idle since 2016 because the company it belonged to was closed due to insolvency. The machine was working perfectly until that time and was parked in the place where it is currently located.

The keys have been lost.

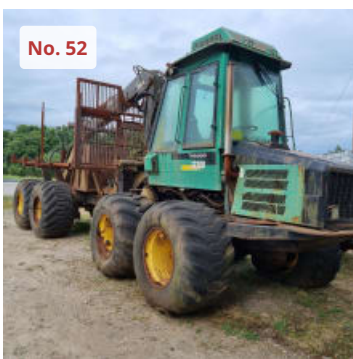
The machine has not been able to turn on nor can it be moved, so it has to be loaded with two cranes to overcome the wall next to which it is located.

IMPORTANT:

The customer is responsible for all the loading related to the equipment.

Dimensions and weights are approximate.

Item number: 762963, Manufacturer: SILVATEC, Model / Type: SLEIPNER 8266 TH, Year of manufacture: 2002, Item available from: Immediately, Item condition: unchecked, Delivery terms: EXW La Magdalena - León, ex foundation, unpackaged, Payment terms: 100% payment prior to collection, dimensions (l x w x h) approx.: 7,800 x 2,800 x 3,700 mm, weight approx.: 20,000 kg



Forestry Self Loader TIMBERJACK 1210 B

Serial number 12100614
Engine power 127 KW
Crane LOGLIFT 71 F (hydraulic distributor is missing)
Working load 14000 kg
Working hours approx. 18000

This machine is stopped since 2016 because the company to which it belonged was closed due to insolvency. The machine was working perfectly until that time, but in this time it has suffered the following damages: the alternator, the air conditioning system and the hydraulic distributor of the crane were stolen. The exhaust pipe cover is missing, so water has entered the engine and the turbo and they are rusted and stuck.

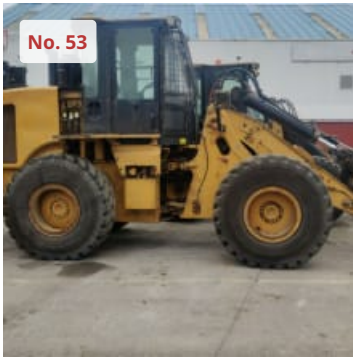
The machine cannot be moved so it has to be loaded with a crane.

IMPORTANT:

The customer is responsible for all the loading related to the equipment.

Dimensions and weights are approximate.

Item number: 762964, Manufacturer: TIMBERJACK, Model / Type: 1210 B, Year of manufacture: 1997, Item available from: Immediately, Item condition: unchecked, Delivery terms: EXW San Cristóbal de Cea - Ourense, ex foundation, unpackaged, Payment terms: 100% payment prior to collection, dimensions (l x w x h) approx.: 9,800 x 2,880 x 3,760 mm, weight approx.: 16,000 kg



CATERPILLAR 930 H Wheel Loader

Serial Number: DHC03875
Working hours according to counter: 13774
Engine Model : C6.6
Effective power: 111 kW
Total power: 2300rpm
Breakout force: 13727 kN
Displacement: 6.6 l.
Tyre size: 20.5 R25 L3 XHA
Maximum torque: 727 Nm
Full bucket capacity: 2.1 m³

IMPORTANT: MACHINE IN TRANSIT

The customer is responsible for all the loading related to the equipment.
Dimensions and weights are approximate.

Item number: 740157, Manufacturer: CATERPILLAR, Model / Type: 930 H , Year of manufacture: 2012, Item available from: Inmediately, Item condition: unchecked, Delivery terms: EXW Hormilla (La Rioja), ex foundation, unpackaged, Payment terms: 100% payment prior to collection, dimensions (l x w x h) approx.: 7,601 x 2,570 x 4,049 mm, weight approx.: 17,200 kg



CATERPILLAR 908 H Wheel Loader

Serial Number : CAT0909HKMXF00420
Working Hours: 9573
Weight capacity: 6465 kg

IMPORTANT:

The customer is responsible for all the loading related to the equipment.
Dimensions and weights are approximate.

Item number: 739641, Manufacturer: CATERPILLAR, Model / Type: 908 H, Year of manufacture: 2008, Item available from: Inmediately, Item condition: unchecked, Delivery terms: EXW Hormilla (La Rioja), ex foundation, unpackaged, Payment terms: 100% payment prior to collection, dimensions (l x w x h) approx.: 6,150 x 1,985 x 3,410 mm, weight approx.: 60,000 kg



POWER TOWERS Electric Vertical Mast

Serial Number: 17650612A
Weight: 342kg
Payload: 250kg
No. Personas + allowance: 1 pax(80kg) +170kg
Max. Working Height: 5100mm
Max. Platform Height: 3100mm
Platform dimensions: 1520x650mm
Max. Manual Force: 200N
Indoor use only
CE Standard

IMPORTANT:

The customer is responsible for all the loading related to the equipment.
Dimensions and weights are approximate.

Item number: 746537, Manufacturer: POWER TOWERS, Year of manufacture: 2012, Item available from: Immediately, Item condition: unchecked, Delivery terms: EXW Hormilla (La Rioja), ex foundation, unpackaged, Payment terms: 100% payment prior to collection, dimensions (l x w x h) approx.: 1,520 x 780 x 1,920 mm, weight approx.: 342 kg



POWER TOWERS NANO Electric Vertical Mast

Serial number: 17374113B
Weight: 285kg
Payload: 200kg
N° Pax + allowance: 1 pax +120kg
Max. Working height: 4500mm
Max. height Platform height: 2500mm
Closed platform height: 360mm
Platform dimensions: 1000x730mm
Max. manual force: 200N
CE standard

IMPORTANT:

The customer is responsible for all the loading related to the equipment.
Dimensions and weights are approximate.

Item number: 746533, Manufacturer: POWER TOWERS, Model / Type: NANO , Year of manufacture: 2013, Item available from: Immediately, Item condition: unchecked, Delivery terms: EXW Hormilla (La Rioja), ex foundation, unpackaged, Payment terms: 100% payment prior to collection, dimensions (l x w x h) approx.: 1,195 x 750 x 1,560 mm, weight approx.: 285 kg



POWER TOWERS PECOLIFT Manual Vertical Mast

Serial Number: 8341513G
Weight: 180g
Payload: 150kg
No. Pax+ allowance: 1 pax + 150kg
Max. Working Height: 3500mm
Max. Platform Height: 1500mm
Platform dimensions: 985x700mm
Max. Manual Force: 200N
Indoor use only
CE Standard

IMPORTANT:

The customer is responsible for all the loading related to the equipment.
Dimensions and weights are approximate.

Item number: 746540, Manufacturer: POWER TOWERS, Model / Type: PECOLIFT, Year of manufacture: 2013, Item available from: Immediately, Item condition: unchecked, Delivery terms: EXW Hormilla (La Rioja), ex foundation, unpackaged, Payment terms: 100% payment prior to collection, dimensions (l x w x h) approx.: 985 x 700 x 1,550 mm, weight approx.: 180 kg



POWER TOWERS NANO SP Electrical Vertical Mast

Serial Number: 10833212D
Weight: 478kg
Payload: 200kg
No. Pax. + allowance: 1 pax(80kg) +120kg
Working Height: 4500mm
Max. Platform Height: 2500mm
Platform dimensions: 1000x730mm
Max. Manual Force: 200N
Max. Wind speed: 12,5 m/s
Inclination: 1,8 degrees

CE Standard

IMPORTANT:

The customer is responsible for all the loading related to the equipment.

Dimensions and weights are approximate.

Item number: 746539, Manufacturer: POWER TOWERS, Model / Type: NANO SP, Year of manufacture: 2012, Item available from: Immediately, Item condition: unchecked, Delivery terms: EXW Hormilla (La Rioja), ex foundation, unpackaged, Payment terms: 100% payment prior to collection, dimensions (l x w x h) approx.: 1,200 x 750 x 1,590 mm, weight approx.: 478 kg



POWER TOWERS PECOLIFT Manual Vertical Mast

Serial Number: 2145012G
Weight: 150g
Payload: 150kg
No. Pax + allowance: 1 pax +70kg
Max. Working Height: 3500mm
Max. Platform Height: 1500mm
Platform dimensions: 985x700mm
Max. Manual Force: 200N
Indoor use only
CE Standard

IMPORTANT:

The customer is responsible for all the loading related to the equipment.

Dimensions and weights are approximate.

Item number: 746542, Manufacturer: POWER TOWERS, Model / Type: PECOLIFT, Year of manufacture: 2012, Item available from: Immediately, Item condition: unchecked, Delivery terms: EXW Hormilla (La Rioja), ex foundation, unpackaged, Payment terms: 100% payment prior to collection, dimensions (l x w x h) approx.: 985 x 700 x 1,550 mm, weight approx.: 150 kg



POWER TOWERS Electric Vertical Mast

Serial Number: 16483711A
Weight: 342kg
Payload: 250kg
No. Pax + allowance: 1 pax(80kg) +170kg
Max. Working Height: 5100mm
Max. Platform Height: 3100mm
Platform dimensions: 1520x650mm
Max. Manual Force: 200N
Indoor use only
CE Standard

IMPORTANT:

The customer is responsible for all the loading related to the equipment.
Dimensions and weights are approximate.

Item number: 746541, Manufacturer: POWER TOWERS, Year of manufacture: 2011, Item available from: Immediately, Item condition: unchecked, Delivery terms: EXW Hormilla (La Rioja), ex foundation, unpackaged, Payment terms: 100% payment prior to collection, dimensions (l x w x h) approx.: 1,520 x 780 x 1,920 mm, weight approx.: 342 kg



POWER TOWERS Electric Vertical Mast

Serial Number: 16133211A
Weight: 342kg
Payload: 250kg
No. Pax + allowance: 1 pax(80kg) +170kg
Working Height: 5100mm
Max. Working Height: 5100mm
Max. Platform Height: 3100mm
Platform dimensions: 1520x650mm
Max. Manual Force: 200N
Indoor use only

CE Standard

IMPORTANT:

The customer is responsible for all the loading related to the equipment.
Dimensions and weights are approximate.

Item number: 746532, Manufacturer: POWER TOWERS, Year of manufacture: 2011, Item available from: Immediately, Item condition: unchecked, Delivery terms: EXW Hormilla (La Rioja), ex foundation, unpackaged, Payment terms: 100% payment prior to collection, dimensions (l x w x h) approx.: 1,520 x 780 x 1,920 mm, weight approx.: 342 kg



TOYOTA Electric Forklift

Forks
Side shift
Duplex mast
Long mast

IMPORTANT: MACHINE IN TRANSIT

The customer is responsible for all the loading related to the equipment.
Dimensions and weights are estimated.

Item number: 768605, Manufacturer: TOYOTA, Year of manufacture: 2014, Item available from: Immediately, Item condition: unchecked, Delivery terms: EXW Hormilla (La Rioja), ex foundation, unpackaged, Payment terms: 100% payment prior to collection, loading capacity: 2,500 to, lifting height: 4,500 mm, dimensions (l x w x h) approx.: 3,300 x 1,195 x 2,900 mm, weight approx.: 3,420 kg



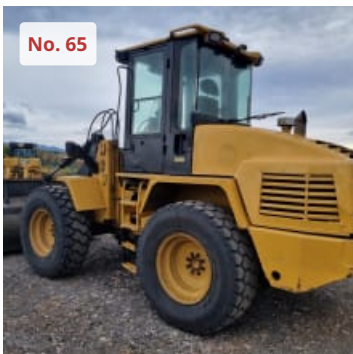
VOLVO L 90 G Wheel Loader

Serial Number: VCEOL90GV00003236
Model: D6H
Power 120kw
Speed: 2200rpm
Load Capacity: 4600kg
Operating Weight: 15850 (including 500kg counterweight)
Working Hours: 14467

IMPORTANT:

The customer is responsible for all the loading related to the equipment.
Dimensions and weights are approximate.

Item number: 739632, Manufacturer: VOLVO, Model / Type: L 90 G, Year of manufacture: 2012, Item available from: Immediately, Item condition: unchecked, Delivery terms: EXW Hormilla (La Rioja), ex foundation, unpackaged, Payment terms: 100% payment prior to collection, dimensions (l x w x h) approx.: 6,120 x 3,960 x 2,490 mm, weight approx.: 15,850 kg



CATERPILLAR IT 14 G Wheel Loader

Working hours according to counter: 8686
Bucket capacity: 1.2 to 1,4m3
Operating weight: 8450kg
Gross Power: 73kw/98hp
Flywheel power: 67kw/90hp

IMPORTANT:

The customer is responsible for all the loading related to the equipment.
Dimensions and weights are approximate.

Item number: 739640, Manufacturer: CATERPILLAR, Model / Type: IT 14 G, Year of manufacture: 2008, Item available from: Immediately, Item condition: unchecked, Delivery terms: EXW Hormilla (La Rioja), ex foundation, unpackaged, Payment terms: 100% payment prior to collection, dimensions (l x w x h) approx.: 6,058 x 2,298 x 3,798 mm, weight approx.: 9,000 kg



Wheeled Loader

Mini wheeled loader with bucket
Piped
Working Hours: 9.076
IMPORTANT:

The customer is responsible for all the loading related to the equipment.
Dimensions and weights are approximate.

Item number: 767439, Manufacturer: MULTIONE, Model / Type: JOLLY GT50D, Year of manufacture: 2003, Item available from: immediately, Item condition: unchecked, Delivery terms: EXW Hormilla (La Rioja), ex foundation, unpackaged, Payment terms: 100% payment prior to collection, dimensions (l x w x h) approx.: 2,690 x 2,040 x 1,280 mm, weight approx.: 1,550 kg



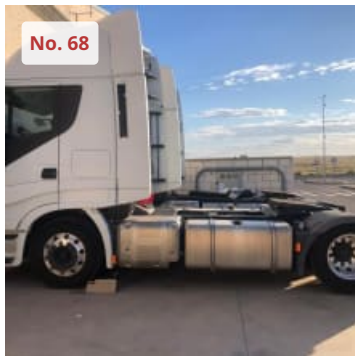
IVECO STRALIS 500 (AS440t/P) Truck 4x2

Identification Number: WJMM1VUH60C314100
Plate: 4534JDZ
ZF intarder
Dual Fuel Tank
AdBlue, Automatic
A/R cab
A/R susp
Working Hours: 658420

IMPORTANT:

The customer is responsible for all the loading related to the equipment.
Dimensions and weights are approximate.

Item number: 767415, Manufacturer: IVECO, Model / Type: STRALIS 500 4x2 (AS440t/P), Year of manufacture: 2015, Item available from: immediately, Item condition: unchecked, Delivery terms: EXW Hormilla (La Rioja), ex foundation, unpackaged, Payment terms: 100% payment prior to collection, dimensions (l x w x h) approx.: 6,250 x 3,310 x 2,550 mm, weight approx.: 6,855 kg



IVECO STRALIS 480 4x2 (AS440t/P) Truck 4x2

Identification number: WJMM1VUH60C332529:
Plate: 1515JMZ
F intarder
Dual Fuel Tank
AdBlue
Automatic
A/R cab
A/R susp
Working Hours: 527.000

IMPORTANT: MACHINE IN TRANSIT

The customer is responsible for all the loading related to the equipment.
Dimensions and weights are approximate.

Item number: 767416, Manufacturer: IVECO, Model / Type: STRALIS 480 4x2 (AS440t/P), Year of manufacture: 2016, Item available from: immediately, Item condition: unchecked, Delivery terms: EXW Hormilla (La Rioja), ex foundation, unpackaged, Payment terms: 100% payment prior to collection, dimensions (l x w x h) approx.: 6,250 x 3,310 x 2,550 mm, weight approx.: 6,855 kg



CARMIX 2500S All Terrain Mixer

3079h
4x4
Self-loading
Spanish Registration

IMPORTANT: MACHINE IN TRANSIT

The customer is responsible for all the loading related to the equipment.
Dimensions and weights are estimated.

Item number: 768604, Manufacturer: CARMIX, Model / Type: 2500S, Year of manufacture: 4224, Item available from: Immediately, Item condition: unchecked, Delivery terms: EXW Hormilla (La Rioja), ex foundation, unpackaged, Payment terms: 100% payment prior to collection, dimensions (l x w x h) approx.: 5,250 x 2,080 x 3,500 mm, weight approx.: 11,500 kg



TAKEUCHI TB145 Mini Excavator

Bucket
Auxiliar hydraulic
Dozer
Extra bucket
Working hours: 7337h

IMPORTANT: MACHINE IN TRANSIT

The customer is responsible for all the loading related to the equipment.
Dimensions and weights are for guidance only.

Item number: 768396, Manufacturer: TAKEUCHI, Model / Type: TB145, Year of manufacture: 2007, Item available from: Inmediately, Item condition: unchecked, Delivery terms: EXW Hormilla (La Rioja), ex foundation, unpackaged, Payment terms: 100% payment prior to collection, serial number: 14,518,198 , dimensions (l x w x h) approx.: 5,600 x 2,500 x 1,800 mm, weight approx.: 4,880 kg



JLG 3246ES Electric Scissorlif Platform

Serial Number: 1200023101
Working Hours: 505

IMPORTANT: MACHINE IN TRANSIT

The customer is responsible for all the loading related to the equipment.
Dimensions and weights are approximate.

Item number: 768397, Manufacturer: JLG, Model / Type: 3246ES, Year of manufacture: 2010, Item available from: Inmediately, Item condition: unchecked, Delivery terms: EXW Hormilla (La Rioja), ex foundation, unpackaged, Payment terms: 100% payment prior to collection, dimensions (l x w x h) approx.: 2,500 x 2,360 x 1,170 mm, weight approx.: 2,200 kg, serial number: 1,200,023,101



POWER TOWERS Electric Vertical Mast

Serial Number: 19632913A
Weight: 342g
Payload: 250kg
No. Pax + allowance: 1 pax (80kg)+170kg
Max. Working Height: 5100mm
Max. Platform Height: 3100mm
Platform dimensions: 1520x650mm
Max. Manual Force: 200N
Indoor use only
CE Standard

IMPORTANT:

The customer is responsible for all the loading related to the equipment.
Dimensions and weights are approximate.

Item number: 746534, Manufacturer: POWER TOWERS, Year of manufacture: 2013, Item available from: Inmediately, Item condition: unchecked, Delivery terms: EXW Hormilla (La Rioja), ex foundation, unpackaged, Payment terms: 100% payment prior to collection, dimensions (l x w x h) approx.: 1,520 x 780 x 1,920 mm, weight approx.: 342 kg



POWER TOWERS NANO SP Electric Vertical Mast

Serial Number: 11394312D
Weight: 478kg
Payload: 200kg
No. Pax. + allowance: 1 pax(80kg) +120kg
Working Height: 4500mm
Max. Platform Height: 2500mm
Platform dimensions: 1000x730mm
Max. Manual Force: 200N
Max. Wind speed: 12,5 m/s
Inclination: 1,8degrees

CE Standard

IMPORTANT:

The customer is responsible for all the loading related to the equipment.

Dimensions and weights are approximate.

Item number: 746544, Manufacturer: POWER TOWERS, Model / Type: NANO SP, Year of manufacture: 2012, Item available from: Immediately, Item condition: unchecked, Delivery terms: EXW Hormilla (La Rioja), ex foundation, unpackaged, Payment terms: 100% payment prior to collection, dimensions (l x w x h) approx.: 1,200 x 750 x 1,590 mm, weight approx.: 478 kg



POWER TOWERS PECOLIFT Manual Vertical Mast

Serial Number: 8921713G
Weight: 180g
Payload: 150kg
No. Personas + allowance: 1 pax+70kg
Max. Working Height: 3500mm
Max. Platform Height: 1500mm
Platform dimensions: 985x700mm
Max. Manual Force: 200N
Indoor use only
CE Standard

IMPORTANT:

The customer is responsible for all the loading related to the equipment.

Dimensions and weights are approximate.

Item number: 746547, Manufacturer: POWER TOWERS, Model / Type: PECOLIFT, Year of manufacture: 2013, Item available from: Immediately, Item condition: unchecked, Delivery terms: EXW Hormilla (La Rioja), ex foundation, unpackaged, Payment terms: 100% payment prior to collection, dimensions (l x w x h) approx.: 985 x 700 x 1,550 mm, weight approx.: 180 kg



POWER TOWERS PECOLIFT Manual Vertical Mast

Serial Number: 9841713G
Weight: 180g
Payload: 150kg
No. Pax + allowance: 1 pax+70kg
Max. Working Height: 3500mm
Max. Platform Height: 1500mm
Platform dimensions: 985x700mm
Max. Manual Force: 200N
CE Standard

IMPORTANT:

The customer is responsible for all the loading related to the equipment.
Dimensions and weights are approximate.

Item number: 746538, Manufacturer: POWER TOWERS, Model / Type: PECOLIFT, Year of manufacture: 2013, Item available from: Immediately, Item condition: unchecked, Delivery terms: EXW Hormilla (La Rioja), ex foundation, unpackaged, Payment terms: 100% payment prior to collection, dimensions (l x w x h) approx.: 985 x 700 x 1,550 mm, weight approx.: 180 kg



CATERPILLAR 930 G Wheel Loader

Serial Number : CAT0930GPTFW00960
Working Hours according counter 5548

IMPORTANT: MACHINE IN TRANSIT

The customer is responsible for all the loading related to the equipment.
Dimensions and weights are approximate.

Item number: 739639, Manufacturer: CATERPILLAR, Model / Type: 930 G, Year of manufacture: 2007, Item available from: Inmediately, Item condition: unchecked, Delivery terms: EXW Hormilla (La Rioja), ex foundation, unpackaged, Payment terms: 100% payment prior to collection, dimensions (l x w x h) approx.: 7,877 x 5,344 x 2,544 mm, weight approx.: 12,700 kg



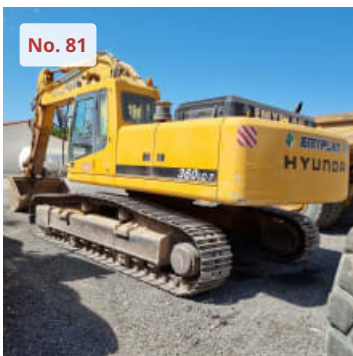
CATERPILLAR 769C Rock Truck

Serial Number 01Y05361
Mileage: 211.454

IMPORTANT:

The customer is responsible for all the loading related to the equipment.
Dimensions and weights are for estimated..

Item number: 768398, Manufacturer: CATERPILLAR, Model / Type: 769C, Year of manufacture: 1989, Item available from: Immediately, Item condition: unchecked, Delivery terms: EXW Orihuea, Alicante, ex foundation, unpackaged, Payment terms: 100% payment prior to collection, dimensions (l x w x h) approx.: 8,000 x 3,700 x 4,500 mm, weight approx.: 30,675 kg



HYUNDAI R360-LC-7 Crawler Excavator

Serial Number: NA0110143
Bucket
Auxiliar Hydraulic

IMPORTANT:

The customer is responsible for all the loading related to the equipment.
Dimensions and weights are for guidance only.

Item number: 768399, Manufacturer: HYUNDAI, Model / Type: R360-LC-7, Year of manufacture: 2004, Item available from: Immediately, Item condition: unchecked, Delivery terms: EXW Orihuea, Alicante, ex foundation, unpackaged, Payment terms: 100% payment prior to collection, serial number: NA0110143, dimensions (l x w x h) approx.: 11,200 x 3,700 x 3,300 mm, weight approx.: 36,100 kg



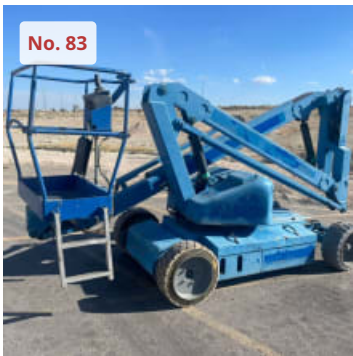
GREEN MACHINE 636 BR697 Sweeper

Could not verify working hrs
Last registration UK

IMPORTANT: MACHINE IN TRANSIT

The customer is responsible for all the loading related to the equipment.
Dimensions and weights are estimated.

Item number: 768617, Manufacturer: GREEN MACHINE, Model / Type: 636 BR697, Year of manufacture: 2005, Item available from: Immediately, Item condition: unchecked, Delivery terms: EXW Hormilla (La Rioja), ex foundation, unpackaged, Payment terms: 100% payment prior to collection, dimensions (l x w x h) approx.: 3,580 x 1,130 x 1,980 mm, weight approx.: 1,950 kg



UPRIGHT AB38 Boom Lift

Electric
12m
Could not verify hours

IMPORTANT: MACHINE IN TRANSIT

The customer is responsible for all the loading related to the equipment.
Dimensions and weights are estimated.

Item number: 768619, Manufacturer: UPRIGHT, Model / Type: AB38, Year of manufacture: 2007, Item available from: Immediately, Item condition: unchecked, Delivery terms: EXW Hormilla (La Rioja), ex foundation, unpackaged, Payment terms: 100% payment prior to collection, dimensions (l x w x h) approx.: 4,100 x 1,500 x 2,000 mm, weight approx.: 3,850 kg



HINOWA Picchio 1690 Tracked Boom Lift

Working height: 16000
Working hours: 1512h

IMPORTANT: MACHINE IN TRANSIT

The customer is responsible for all the loading related to the equipment.
Dimensions and weights are estimated.

Item number: 768620, Manufacturer: HINOWA, Model / Type: Picchio 1690, Year of manufacture: 2003, Item available from: Immediately, Item condition: unchecked, Delivery terms: EXW Hormilla (La Rioja), ex foundation, unpackaged, Payment terms: 100% payment prior to collection, dimensions (l x w x h) approx.: 4,900 x 1,150 x 2,300 mm, weight approx.: 2,800 kg



JOHNSTON CX200 Sweeper

Could not verify hours
Spanish Registration

IMPORTANT: MACHINE IN TRANSIT

The customer is responsible for all the loading related to the equipment.
Dimensions and weights are estimated.

Item number: 768621, Manufacturer: JOHNSTON, Model / Type: CX200, Year of manufacture: 2008, Item available from: Immediately, Item condition: unchecked, Delivery terms: EXW Hormilla (La Rioja), ex foundation, unpackaged, Payment terms: 100% payment prior to collection, dimensions (l x w x h) approx.: 4,120 x 1,350 x 1,960 mm, weight approx.: 2,700 kg



TOYOTA FBM20 Electric Forklift

2 ton capacity
Duplex mast
Side shift

IMPORTANT: MACHINE IN TRANSIT

The customer is responsible for all the loading related to the equipment.
Dimensions and weights are estimated.

Item number: 768628, Manufacturer: TOYOTA, Model / Type: FBM20, Year of manufacture: 2000, Item available from: Immediately, Item condition: unchecked, Delivery terms: EXW Hormilla (La Rioja), ex foundation, unpackaged, Payment terms: 100% payment prior to collection, dimensions (l x w x h) approx.: 3,600 x 1,500 x 2,800 mm, weight approx.: 3,800 kg



CATERPILLAR EP25K Electric Forklift

Serial Number: ET25C 52675
Load Capacity: 2500 kg.
Battery

IMPORTANT: MACHINE IN TRANSIT

The customer is responsible for all the loading related to the equipment.
Dimensions and weights are estimated.

Item number: 768630, Manufacturer: CATERPILLAR, Model / Type: EP25K, Year of manufacture: 2006, Item available from: Immediately, Item condition: unchecked, Delivery terms: EXW Hormilla (La Rioja), ex foundation, unpackaged, Payment terms: 100% payment prior to collection, dimensions (l x w x h) approx.: 3,340 x 1,190 x 2,000 mm, weight approx.: 4,378 kg