

Auction Catalogue

Manufacturer of Fair Carousels - No Reserve Prices!

Viewing by appointment only!

17486 Castelló D´Empuries
Spain

115 lots

Bidding ends:

Tuesday, 28/06/2022, 10:00(local time)

Bids are welcome immediately and can be placed at:

Contact:

Agustin Fernandez
+34 936 393 895
agustin.fernandez@surplex.com
www.surplex.com

Viewing:

Viewing by appointment only!

17486 Castelló D´Empuries
Spain
Tuesday, **21/06/2022**, from 09:00 to 17:00

Description:

Manufacturer of Fair Carousels and Elements for Children's Fairs

Main lots:

- TAURING ALFA 70 Profile Bending Machine
- SANGIACOMO PRESSE T 50 Eccentric Press
- STARTRITE HB250A Horizontal Band Saw
- NARGESA C2006 Hydraulic Shear (2016
 - STILL FM 14 Electric Reach Truck
- TERMOMECCANICA GL Treatment Booth and others



IBARMIA A-40 Column Drilling Machine

Column drill
Serial number 400-A
Table measurements: 390 x 390 mm
Spindle vertical travel: 110 mm
Vertical travel of the table: 550 mm approx.
9 working speeds: from 63 to 1258 Rpm
Motor power: 2.2 HP
Accessories included

Item number: 746559, Manufacturer: IBARMIA, Model / Type: A-40, Item available from: Immediately, Item condition: unchecked, Delivery terms: FCA Castelló D'Empuries, loaded on truck, Payment terms: 100% payment prior to collection, weight approx.: 400 kg, dimensions (l x w x h) approx.: 540 x 940 x 2,280 mm



AGME DC110 Pneumatic Press

Pneumatic press
Table size: 270 x 200 mm
Max. travel: 175 mm
Pressing force: 1800 Kg
Air pressure: 6 atm
Support bench included

Item number: 746551, Manufacturer: AGME, Model / Type: DC110, Item available from: Immediately, Item condition: unchecked, Delivery terms: FCA Castelló D'Empuries, loaded on truck, Payment terms: 100% payment prior to collection, dimensions (l x w x h) approx.: 600 x 940 x 2,170 mm, weight approx.: 120 kg



SUPERLEMA Bench Grinder

Double bench grinder
Composed of:
· 1 polishing disc
Disc diameter: 180 mm
· 1 long belt sanding group.
Shaft diameter: 200 mm
Wheelbase: 650 mm
Sandpaper width: 50 mm

Item number: 746562, Manufacturer: SUPERLEMA, Item available from: Immediately, Item condition: unchecked, Delivery terms: FCA Castelló D'Empuries, loaded on truck, Payment terms: 100% payment prior to collection, dimensions (l x w x h) approx.: 680 x 650 x 1,720 mm, weight approx.: 60 kg



TAURING ALFA 70 Profile Bending Machine

Profile bending machine
Serial number 070A-630
Roll-holding shafts diameter: 70 mm
Standard shafts working length: 160 mm
Universal upper roller diameter: 245 mm
Universal lower roller diameter: 245 mm
Lower rolls max. stroke: 102 mm
Shaft speed: 5.5 turns/min
Main motor power: 4 kW
Total power: 5.1 kw
Power of each hydraulic cylinder: 158 kN

Noise level during bending: 75 db
Foot operated
Spare rollers included
CE Standards

Item number: 746555, Manufacturer: TAURING, Model / Type: ALFA 70, Year of manufacture: 2003, Item available from: Immediately, Item condition: unchecked, Delivery terms: FCA Castelló D Empuries, loaded on truck, Payment terms: 100% payment prior to collection, weight approx.: 1,360 kg, dimensions (l x w x h) approx.: 1,640 x 1,220 x 1,580 mm



PEDRAZZOLI Universal Brown 40 Profile Bending Machine

Profile bending machine
Maximum tube length: 3500 mm
Maximum tube passage diameter: 20 mm
Motor power: 7.5 HP - 1440 Rpm
Pedal operated
Bending accessories included

Item number: 747208, Manufacturer: PEDRAZZOLI, Model / Type: Universal Brown 40, Item available from: Immediately, Item condition: unchecked, Delivery terms: FCA Castelló D Empuries, loaded on truck, Payment terms: 100% payment prior to collection, weight approx.: 800 kg, dimensions (l x w x h) approx.: 4,800 x 650 x 1,380 mm



IBARMIA 40-CA Column Drilling Machine

Column drill
Table measurements: 390 x 390 mm
Spindle vertical travel: 180 mm
Vertical travel of the table: 550 mm approx.
9 working speeds: from 71 to 1344 Rpm
Accessories included

Item number: 746954, Manufacturer: IBARMIA, Model / Type: 40-CA, Item available from: Immediately, Item condition: unchecked, Delivery terms: FCA Castelló D Empuries, loaded on truck, Payment terms: 100% payment prior to collection, weight approx.: 600 kg, dimensions (l x w x h) approx.: 540 x 900 x 2,470 mm



CEA THYTRONIC 155 Welding Device (mobile)

Welding device
Usage factor at 35%: 150 A
Usage factor at 60%: 115 A
Usage factor at 100%: 90 A
Rated welding current: 150 A
Frequency: 50 Hz
Three-phase connection
With wheels for easy transport

Item number: 746956, Manufacturer: CEA, Model / Type: THYTRONIC 155, Item available from: Immediately, Item condition: unchecked, Delivery terms: FCA Castelló D Empuries, loaded on truck, Payment terms: 100% payment prior to collection, weight approx.: 400 kg, dimensions (l x w x h) approx.: 600 x 800 x 700 mm



T. LIGUR EL-2 Bench Grinder

Double bench grinder
Motor power: 0.5 HP
Working speed: 2850 Rpm
Grinding wheels diameter: 180 / 140 mm

Item number: 746926, Manufacturer: T. LIGUR, Model / Type: EL-2, Item available from: Immediately, Item condition: unchecked, Delivery terms: FCA Castelló D Empuries, loaded on truck, Payment terms: 100% payment prior to collection, dimensions (l x w x h) approx.: 540 x 250 x 350 mm, weight approx.: 20 kg



OMP MATIC 315/EUROMATIC 350 Metal Cutting Machine

Metal cutting machine
Serial number 863
Disc diameter: 300 - 315 mm
Motor power: 4 HP
Tiltable head: -90° / +45°
With two jaws for clamping the bars
Feeding table size: 6150 x 1400 mm
Outfeed table size: 1900 x 800 mm
Set of spare discs included

Item number: 747140, Manufacturer: OMP, Model / Type: MATIC 315/EUROMATIC 350, Year of manufacture: 1985, Item available from: Immediately, Item condition: unchecked, Delivery terms: FCA Castelló D'Empuries, loaded on truck, Payment terms: 100% payment prior to collection, dimensions (l x w x h) approx.: 8,750 x 1,900 x 1,950 mm, weight approx.: 1,800 kg



STARTRITE HB250A Metal Horizontal Band Saw

Horizontal band saw
Serial number 151521
Maximum cutting capacity: 250 mm
Pulley diameter: 350 mm
Motor power: 1.5 kW
Outfeed table size: 460 x 920 mm

Item number: 747217, Manufacturer: STARTRITE, Model / Type: HB250A, Year of manufacture: 1996, Item available from: Immediately, Item condition: unchecked, Delivery terms: FCA Castelló D'Empuries, loaded on truck, Payment terms: 100% payment prior to collection, weight approx.: 750 kg, dimensions (l x w x h) approx.: 1,870 x 2,500 x 1,190 mm



TRONZADORAS MG LEONARD 300 Metal Horizontal Band Saw

Horizontal band saw
Cutting speed: 35-70 m/min.
Motor power: 0.6 / 1HP
Bandsaw dimensions: 2750 x 27 x 0.9 mm
Round cutting capacity at 90°: 240 mm
Rectangular cutting capacity at 90°: 300 x 230 mm
Square cutting capacity at 90°: 220 x 220 mm
Round cutting capacity at 45°: 200 mm
Rectangular cutting capacity at 45°: 220 x 190 mm
Square cutting capacity at 45°: 190 x 190 mm
Round cutting capacity at 60°: 110 mm.

Rectangular cutting capacity at 60°: 110 x 140 mm.
Square cutting capacity at 60°: 100 x 100 mm.
Max. jaw opening: 310 mm

Item number: 746925, Manufacturer: TRONZADORAS MG, Model / Type: LEONARD 300, Item available from: Immediately, Item condition: unchecked, Delivery terms: FCA Castelló D'Empuries, loaded on truck, Payment terms: 100% payment prior to collection, weight approx.: 660 kg, dimensions (l x w x h) approx.: 1,600 x 1,390 x 1,530 mm



TORRENT T.72-42 Centre Lathe

Centre lathe
Plate diameter: 250 mm
Bar passage: 42 mm
Distance between centres: 1650 mm
Swing over bed: 440 mm
Bed width: 200 mm
Accessories included

Item number: 747214, Manufacturer: TORRENT, Model / Type: T.72-42, Item available from: Immediately, Item condition: unchecked, Delivery terms: FCA Castelló D´Empuries, loaded on truck, Payment terms: 100% payment prior to collection, turning diameter over bed: 440 mm, spindle bore: 42 mm, weight approx.: 1,200 kg, dimensions (l x w x h) approx.: 2,900 x 900 x 1,450 mm



PINACHO A-75 Centre Lathe

Centre lathe
Plate diameter: 250 mm
Bar passage: 42 mm
Distance between centres: 750 mm
Swing over bed: 460 mm
Bed width: 200 mm
Accessories included

Item number: 747215, Manufacturer: PINACHO, Model / Type: A-75, Item available from: Immediately, Item condition: unchecked, Delivery terms: FCA Castelló D´Empuries, loaded on truck, Payment terms: 100% payment prior to collection, turning diameter over bed: 460 mm, spindle bore: 42 mm, weight approx.: 1,200 kg, dimensions (l x w x h) approx.: 2,300 x 900 x 1,600 mm



FORMIS Bench Grinder

Double bench grinder
Composed of:
· 1 polishing disc
Disc diameter: 220 mm
· 1 long belt sanding group.
Shaft diameter: 200 mm
Wheelbase: 660 mm
Sandpaper width: 50 mm

Item number: 746552, Manufacturer: FORMIS, Item available from: Immediately, Item condition: unchecked, Delivery terms: FCA Castelló D´Empuries, loaded on truck, Payment terms: 100% payment prior to collection, dimensions (l x w x h) approx.: 830 x 650 x 1,720 mm, weight approx.: 60 kg



Welding Devices (mobile)

Lot of 3 welding devices.
Composed by:
· 1 FERR-2100 TURBO unit (35 to 160 A)
· 1 KD 140 T unit (40 to 120 A)
· 1 FERR 140 unit (30 to 140 A)

Item number: 747141, Item available from: Immediately, Item condition: unchecked, Delivery terms: FCA Castelló D´Empuries, loaded on truck, Payment terms: 100% payment prior to collection, weight approx.: 100 kg, dimensions (l x w x h) approx.: 960 x 455 x 400 mm



LINCOLN ELECTRIC COMPACT 280-I Welding Device (mobile)

Welding device
Serial number 1370937949
Usage factor at 35%: 280 A
Usage factor at 60%: 210 A
Usage factor at 100%: 170 A
Rated welding current: 280 A
Current regulation range: 40-280 A
Frequency: 50/60 Hz
Three-phase connection
With wheels for easy transport

Item number: 746939, Manufacturer: LINCOLN ELECTRIC, Model / Type: COMPACT 280-I, Item available from: Immediately, Item condition: unchecked, Delivery terms: FCA Castelló D'Empuries, loaded on truck, Payment terms: 100% payment prior to collection, current intensity: 280 A, weight approx.: 120 kg, dimensions (l x w x h) approx.: 1,300 x 470 x 800 mm



COLOMER HNOS Broaching Machine

Vertical broaching machine
Worktable measurements: 600 x 340 mm
Motor power: 1 HP
Working speed: 1410 Rpm
Extra broaching tools included

Item number: 746927, Manufacturer: COLOMER HNOS, Item available from: Immediately, Item condition: unchecked, Delivery terms: FCA Castelló D'Empuries, loaded on truck, Payment terms: 100% payment prior to collection, weight approx.: 250 kg, dimensions (l x w x h) approx.: 930 x 550 x 1,250 mm



ERLO TCA 25 Pillar or Column Drilling Machine

Column drill
Serial number 888/262
Table measurements: 310 x 330 mm
Spindle vertical travel: 170 mm
Vertical travel of the table: 650 mm approx.
Tiltable table
8 working speeds: from 93 to 1420 Rpm
Motor power: 0.75 Kw
Accessories included

Item number: 746928, Manufacturer: ERLO, Model / Type: TCA 25, Item available from: Immediately, Item condition: unchecked, Delivery terms: FCA Castelló D'Empuries, loaded on truck, Payment terms: 100% payment prior to collection, weight approx.: 400 kg, dimensions (l x w x h) approx.: 800 x 500 x 2,230 mm



EURING Profile Bending Machine

Profile bending machine
Maximum vertical travel of the roller: 100 mm
Shafts diameter: 30 mm
Motor power: 0.37 kW - 1390 Rpm
With wheels for easy transport
Accessories included

Item number: 746556, Manufacturer: EURING, Item available from: Immediately, Item condition: unchecked, Delivery terms: FCA Castelló D'Empuries, loaded on truck, Payment terms: 100% payment prior to collection, weight approx.: 250 kg, dimensions (l x w x h) approx.: 650 x 500 x 1,540 mm



HECO Workbench

Workbench
Bench size: 1800 x 800 x 880 mm
Tool cabinet dimensions: 1800 x 900 x 170 mm
Bench vice included

Item number: 746548, Manufacturer: HECO, Item available from: Immediately, Item condition: unchecked, Delivery terms: FCA Castelló D'Empuries, loaded on truck, Payment terms: 100% payment prior to collection, weight approx.: 100 kg, dimensions (l x w x h) approx.: 1,800 x 900 x 1,200 mm



TERMOMECCANICA GL PREPSTATION Preparation Station

Preparation station
Serial number 293/17
Interior capacity: 7000 x 5000 x 2800 mm
Extractor motor power: 4 kW
Air volume: 14.000 m3/h
Working hours: 435 h
It has 2 accesses with sliding curtains (side and front accesses)
CE Standards

Item number: 747063, Manufacturer: TERMOMECCANICA GL, Model / Type: PREPSTATION, Year of manufacture: 2017, Item available from: Immediately, Item condition: unchecked, Delivery terms: FCA Castelló D'Empuries, loaded on truck, Payment terms: 100% payment prior to collection, working width: 7,000 mm, dimensions (l x w x h) approx.: 8,650 x 5,300 x 3,500 mm, weight approx.: 3,000 kg



GABA Eccentric Press

Eccentric press
Motor power 0.55 kW - 1370 Rpm
220V connection

See also video

Item number: 747231, Manufacturer: GABA, Item available from: Immediately, Item condition: unchecked, Delivery terms: FCA Castelló D'Empuries, loaded on truck, Payment terms: 100% payment prior to collection, weight approx.: 250 kg, dimensions (l x w x h) approx.: 1,000 x 1,400 x 1,780 mm



IBARMIA 40-CA Pillar or Column Drilling Machine

Column drill
Serial number 6053
Table measurements: 390 x 390 mm
Spindle vertical travel: 210 mm
Vertical travel of the table: 550 mm approx.
9 working speeds: from 71 to 1344 Rpm
Motor power: 2 HP
Accessories included

Item number: 746953, Manufacturer: IBARMIA, Model / Type: 40-CA, Item available from: Immediately, Item condition: unchecked, Delivery terms: FCA Castelló D'Empuries, loaded on truck, Payment terms: 100% payment prior to collection, weight approx.: 600 kg, dimensions (l x w x h) approx.: 540 x 900 x 2,470 mm



NARGESA C2006 Hydraulic Shear

Hydraulic shear
Model C2006
Serial number 279C2006
Maximum cutting length: 2030 mm
Gooseneck: 190 mm
Back gauge travel: 700 mm
Cutting capacity: steel (450N/mm²): 6 mm
Cutting capacity: stainless steel (700N/mm²): 4 mm
Motor power: 5.5 kW
Number of clamps: 10 units
Strokes per minute: 10

Position accuracy and repeatability: +/- 0.1 mm
Pedal operated
CE Standards

Item number: 746955, Manufacturer: NARGESA, Model / Type: C2006, Year of manufacture: 2016, Item available from: Immediately, Item condition: unchecked, Delivery terms: FCA Castelló D'Empuries, loaded on truck, Payment terms: 100% payment prior to collection, plate thickness: 4-6 mm, weight approx.: 4,800 kg, dimensions (l x w x h) approx.: 2,680 x 2,360 x 1,765 mm



FIM VULCANO 20-500 Punching Machine

Punching machine
Serial number 5018
Working force: 20 Tn
Work table measurements: 1000 x 860 mm
Motor power: 4 kw
Pedal operated
Punching accessories included

Item number: 747233, Manufacturer: FIM, Model / Type: VULCANO 20-500, Year of manufacture: 1992, Item available from: Immediately, Item condition: unchecked, Delivery terms: FCA Castelló D'Empuries, loaded on truck, Payment terms: 100% payment prior to collection, total power requirement: 4 kW, weight approx.: 1,500 kg, dimensions (l x w x h) approx.: 1,000 x 1,400 x 1,780 mm



LINCOLN ELECTRIC CV400 Welding Device (mobile)

Welding device
Serial number 1001039493
Usage factor at 60%: 400 A
Usage factor at 100%: 300 A
Rated welding current: 400 A
Current regulation range: 50-400 A
Frequency: 50/60 Hz
LN 742 wire feeding unit
Three-phase connection
With wheels for easy transport

Item number: 746938, Manufacturer: LINCOLN ELECTRIC, Model / Type: CV400, Item available from: Immediately, Item condition: unchecked, Delivery terms: FCA Castelló D'Empuries, loaded on truck, Payment terms: 100% payment prior to collection, current intensity: 400 A, weight approx.: 150 kg, dimensions (l x w x h) approx.: 1,200 x 680 x 1,330 mm



PROMECAM MEBUSA RG-40-20 Hydraulic Press Brake

Hydraulic press brake
Serial number 2 04020 2941
Working capacity: 40 Tn
Maximum working length: 2000 mm
Depth of the gooseneck: 200 mm
Distance between columns: 1690 mm
Maximum vertical stroke: 100 mm

Item number: 747227, Manufacturer: PROMECAM MEBUSA, Model / Type: RG-40-20, Item available from: Immediately, Item condition: unchecked, Delivery terms: FCA Castelló D´Empuries, loaded on truck, Payment terms: 100% payment prior to collection, pressure: 40 to, bending length: 2,000 mm, distance between columns: 1,690 mm, stroke: 100 mm, weight approx.: 2,300 kg, dimensions (l x w x h) approx.: 2,100 x 1,150 x 2,000 mm



FRALA Eccentric Press

Eccentric press
Work table measurement: 520 x 310 mm
Motor power 2 HP
Pedal operated
With a 45° cutting shear
Cutting length: 95 x 95 x 135 mm

Item number: 747244, Manufacturer: FRALA, Item available from: Immediately, Item condition: unchecked, Delivery terms: FCA Castelló D´Empuries, loaded on truck, Payment terms: 100% payment prior to collection, weight approx.: 1,200 kg, dimensions (l x w x h) approx.: 700 x 1,160 x 1,760 mm



KD GLC 359 B Welding Device (mobile)

MIG/MAG Welding device
Serial number 9080
Usage factor at 60%: 350 A
Usage factor at 100%: 270 A
Wire diameter: 0.8 mm
Frequency: 50Hz
Three-phase connection
With wheels for easy transport

Item number: 746929, Manufacturer: KD, Model / Type: GLC 359 B, Item available from: Immediately, Item condition: unchecked, Delivery terms: FCA Castelló D´Empuries, loaded on truck, Payment terms: 100% payment prior to collection, weight approx.: 120 kg, dimensions (l x w x h) approx.: 1,300 x 500 x 1,170 mm



ALBA Y MUÑOZ CC 03 Bending Rollers

Bending rollers
Serial number 678
Number of rollers: 3
Roller length: 1050 mm
Maximum sheet thickness: 2 mm
Maximum roller travel: 100 mm
Manual lifting of the rollers
Motor power: 0.75 kw
Connection: 380 V
CE Standards

Item number: 747239, Manufacturer: ALBA Y MUÑOZ, Model / Type: CC 03, Year of manufacture: 2003, Item available from: Immediately, Item condition: unchecked, Delivery terms: FCA Castelló D´Empuries, loaded on truck, Payment terms: 100% payment prior to collection, number of rolls: 3, weight approx.: 500 kg, dimensions (l x w x h) approx.: 1,630 x 700 x 1,090 mm



TALLERES MATIENA MATIE Eccentric Press

Eccentric press
Maximum working pressure: 40 Tn
Variable course: 14 courses between 10 to 90 mm
Work table measurement: 510 x 505 mm
Maximum distance between table and carriage: 420 mm
Motor power 3 kW

Item number: 747243, Manufacturer: TALLERES MATIENA, Model / Type: MATIE, Item available from: Immediately, Item condition: unchecked, Delivery terms: FCA Castelló D'Empuries, loaded on truck, Payment terms: 100% payment prior to collection, pressure: 40 to, weight approx.: 1,800 kg, dimensions (l x w x h) approx.: 800 x 1,200 x 2,020 mm



Heating Apparatus

Lot of 3 industrial heaters
Composed by:

- 2 THERMOBILE T 22 heaters
Power: 25 kW
Capacity: 22,000 Kca
Airflow: 600 m3/h

- 1 MET MAN GRYP 28 heater
Power: 28 kW
Airflow: 500 m3/h

With wheels for easy transport

Item number: 747297, Item available from: Immediately, Item condition: unchecked, Delivery terms: FCA Castelló D'Empuries, loaded on truck, Payment terms: 100% payment prior to collection, dimensions (l x w x h) approx.: 1,500 x 1,300 x 700 mm, weight approx.: 60 kg



HECO Workbench

Workbench
Bench size: 1800 x 750 x 880 mm
Tool cabinet dimensions: 1800 x 900 x 170 mm
Bench vice included
Contents included

Item number: 746560, Manufacturer: HECO, Item available from: Immediately, Item condition: unchecked, Delivery terms: FCA Castelló D'Empuries, loaded on truck, Payment terms: 100% payment prior to collection, weight approx.: 120 kg, dimensions (l x w x h) approx.: 1,800 x 900 x 1,200 mm



HAGEN AND GOEBEL HO 22 H Column Drilling Machine

Column drill
Serial number HR6387
Spindle vertical travel: 1100 mm
Work table size: 595 x 445 mm
Table vertical travel: 400 mm approx.
6 working speeds: from 95 to 530 Rpm
Accessories included

Item number: 747224, Manufacturer: HAGEN AND GOEBEL, Model / Type: HO 22 H, Item available from: Immediately, Item condition: unchecked, Delivery terms: FCA Castelló D'Empuries, loaded on truck, Payment terms: 100% payment prior to collection, turning speed range: 95-530 rpm, table surface area l x w : 595 x 445 mm, weight approx.: 2,000 kg, dimensions (l x w x h) approx.: 930 x 1,100 x 2,200 mm



SANGIACOMO PRESSE T 50 CE Eccentric Press

Eccentric press
Model: T 50 CE
Serial number 11287
Nominal force: 500 kN
Nominal stroke: 3 mm
Adjustable stroke: 12 - 110 mm
Stop time: 121ms
Safety distance: 194 mm
Cycles per minute: 140
Table measurements: 750 x 440 mm
Total installed power: 4.05 kW

Working pressure: 5.5 - 6 bar
CE standards
Accessories included

Item number: 747238, Manufacturer: SANGIACOMO PRESSE, Model / Type: T 50 CE, Year of manufacture: 2002, Item available from: Immediately, Item condition: unchecked, Delivery terms: FCA Castelló D'Empuries, loaded on truck, Payment terms: 100% payment prior to collection, pressure: 50 to, no. of strokes per minute: 140, weight approx.: 3,200 kg, dimensions (l x w x h) approx.: 1,650 x 1,300 x 2,550 mm



SUNARC SP-518 Point Welding Machine

Point welding equipment
Serial number 66264
Power at 50% F.M.: 18 kVA
Maximum thickness when welding: 4 + 4 mm
Rod capacity (diameter): 10 + 10 mm
Standard neckgoose: 380 mm
Distance between arms: 220 mm
Electrode holder diameter: 20 mm
Cooling water flow: 250 l/h
Current regulation range: 100-150 A

Item number: 747235, Manufacturer: SUNARC, Model / Type: SP-518, Year of manufacture: 1995, Item available from: Immediately, Item condition: unchecked, Delivery terms: FCA Castelló D'Empuries, loaded on truck, Payment terms: 100% payment prior to collection, dimensions (l x w x h) approx.: 1,200 x 1,000 x 1,460 mm, weight approx.: 150 kg



EUREKA MACH1 EB Industrial Sweeper

Industrial sweeper
Serial number 1398
Power: 0.6 kW
Maximum working inclination: 2%
Brush diameter: 450 mm
12V battery
Battery charger included

Item number: 747298, Manufacturer: EUREKA, Model / Type: MACH1 EB, Year of manufacture: 2003, Item available from: Immediately, Item condition: unchecked, Delivery terms: FCA Castelló D'Empuries, loaded on truck, Payment terms: 100% payment prior to collection, dimensions (l x w x h) approx.: 1,800 x 700 x 900 mm, weight approx.: 150 kg



STILL FM 14 Reach Truck

Electric reach truck

Load capacity: 1400 kg

Fork measurements: 1200 x 100 x 40 mm

Max lifting height approx. 5500 mm

Operations:

- Front displacement of the forks
- Lateral displacement of the forks
- Raising and lowering of the forks
- Mast tilt

Triplex mast

Minimum passage height: 2470 mm

Working hours according to the counter: 2040 h

48V battery

Battery charger included

Item number: 747205, Manufacturer: STILL, Model / Type: FM 14, Item available from: Immediately, Item condition: unchecked, Delivery terms: FCA Castelló D'Empuries, loaded on truck, Payment terms: 100% payment prior to collection, dimensions (l x w x h) approx.: 2,600 x 1,250 x 2,470 mm, weight approx.: 3,200 kg



Hand Pallet Trucks

Lot of 2 hand pallet trucks:

- 1 STÖCKLIN hand pallet truck

Fork length: 1150 x 160 mm

Loading surface: 1150 x 540 mm

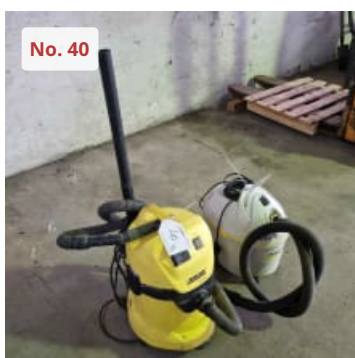
- 1 NOBLELIFT DF25 hand pallet truck

Load capacity: 2500 Kg

Fork length: 1150 x 160 mm

Loading surface: 1150 x 540 mm

Item number: 747311, Item available from: Immediately, Item condition: unchecked, Delivery terms: FCA Castelló D'Empuries, loaded on truck, Payment terms: 100% payment prior to collection, dimensions (l x w x h) approx.: 1,500 x 1,300 x 1,230 mm, weight approx.: 150 kg



KÄRCHER Vacuum Cleaners

Lot of 2 vacuum cleaners:

- 1 KÄRCHER WD 3.500 P vacuum cleaner

Maximum power: 1400 W

Connection: 220V

- 1 KÄRCHER 2111 vacuum cleaner

Maximum power: 1200 W

Connection: 220V

Item number: 747300, Manufacturer: KÄRCHER, Item available from: Immediately, Item condition: unchecked, Delivery terms: FCA Castelló D'Empuries, loaded on truck, Payment terms: 100% payment prior to collection, dimensions (l x w x h) approx.: 800 x 600 x 1,000 mm, weight approx.: 15 kg



JIE BA BF502 Industrial Vacuum Cleaner

Industrial vacuum cleaner
Power: 2000 W
Tank capacity: 70 L
Connection: 220 V
With wheels for easy transport

Item number: 747302, Manufacturer: JIE BA, Model / Type: BF502, Item available from: Immediately, Item condition: unchecked, Delivery terms: FCA Castelló D'Empuries, loaded on truck, Payment terms: 100% payment prior to collection, dimensions (l x w x h) approx.: 500 x 600 x 900 mm, weight approx.: 30 kg



JUNGHEINRICH HC 10 G56 115 Electric Pallet Truck

Electric pallet truck
Serial number 83A 208 22155
Maximum load capacity: 1000 Kg
Fork length: 1150 x 160 mm
Loading surface: 1150 x 560 mm
Minimum passage height: 1980 mm
Max lift: 2900 mm
Center of gravity: 600 mm
24 V Battery
Battery charger included
CE Standards

Item number: 747318, Manufacturer: JUNGHEINRICH, Model / Type: HC 10 G56 115, Year of manufacture: 2002, Item available from: Immediately, Item condition: unchecked, Delivery terms: FCA Castelló D'Empuries, loaded on truck, Payment terms: 100% payment prior to collection, dimensions (l x w x h) approx.: 1,650 x 830 x 1,980 mm, weight approx.: 500 kg



ABAC B259-50 Mobile Compressor

Compressor
Power 2HP
Tank capacity: 50 L
Probably defective

Item number: 746957, Manufacturer: ABAC, Model / Type: B259-50, Year of manufacture: 2000, Item available from: Immediately, Item condition: defect, Delivery terms: FCA Castelló D'Empuries, loaded on truck, Payment terms: 100% payment prior to collection, dimensions (l x w x h) approx.: 780 x 600 x 810 mm, weight approx.: 60 kg



Hand Tools

Hand tools
Includes: drills, grinders, jigsaw, manual sanding machine, heaters...among others
Check the photos for more information

Item number: 747229, Item available from: Immediately, Item condition: unchecked, Delivery terms: FCA Castelló D'Empuries, loaded on truck, Payment terms: 100% payment prior to collection, dimensions (l x w x h) approx.: 1,440 x 500 x 1,450 mm, weight approx.: 300 kg



HECO Tool Cabinet

Tool cabinet dimensions: 1800 x 900 x 170 mm
Contents included

Item number: 746561, Manufacturer: HECO, Item available from: Immediately, Item condition: unchecked, Delivery terms: FCA Castelló D'Empuries, loaded on truck, Payment terms: 100% payment prior to collection, weight approx.: 60 kg, dimensions (l x w x h) approx.: 1,800 x 900 x 170 mm



TURBOCALOR V-120-E Industrial Heater

Industrial heater
Serial number 8610
Rated power: 120.000 Kcal/h
Power: 139 kW
Air flow: 7.800 m3/h
Ventilation power: 1.5 kW
With wheels for easy transport

Item number: 747316, Manufacturer: TURBOCALOR, Model / Type: V-120-E, Item available from: Immediately, Item condition: unchecked, Delivery terms: FCA Castelló D'Empuries, loaded on truck, Payment terms: 100% payment prior to collection, heating power: 139 kW, dimensions (l x w x h) approx.: 1,850 x 750 x 1,740 mm, weight approx.: 300 kg



MOTORMAN Hand Pallet Truck with Scale

Hand pallet truck with scale
Serial number 04120155
Maximum load capacity: 2000 Kg
Weight capacity: 2000 Kg
Fork length: 1140 x 180 mm
Loading surface: 1140 x 560 mm
Max lift: 185 mm
CE Standards
Scale battery charger included

Item number: 747312, Manufacturer: MOTORMAN, Year of manufacture: 2004, Item available from: Immediately, Item condition: unchecked, Delivery terms: FCA Castelló D'Empuries, loaded on truck, Payment terms: 100% payment prior to collection, dimensions (l x w x h) approx.: 1,650 x 560 x 1,250 mm, weight approx.: 90 kg



TRONZADORAS MG LEONARD 300 Metal Horizontal Band Saw

Horizontal band saw
Cutting speed: 35-70 m/min.
Motor power: 0.6 / 1HP
Bandsaw dimensions: 2750 x 27 x 0.9 mm
Round cutting capacity at 90°: 240 mm
Rectangular cutting capacity at 90°: 300 x 230 mm
Square cutting capacity at 90°: 220 x 220 mm
Round cutting capacity at 45°: 200 mm
Rectangular cutting capacity at 45°: 220 x 190 mm
Square cutting capacity at 45°: 190 x 190 mm
Round cutting capacity at 60°: 110 mm.

Rectangular cutting capacity at 60°: 110 x 140 mm.
Square cutting capacity at 60°: 100 x 100 mm.
Max. jaw opening: 310 mm

Doesn't work!!

Item number: 746924, Manufacturer: TRONZADORAS MG, Model / Type: LEONARD 300, Item available from: Immediately, Item condition: unchecked, Delivery terms: FCA Castelló D´Empuries, loaded on truck, Payment terms: 100% payment prior to collection, weight approx.: 660 kg, dimensions (l x w x h) approx.: 1,600 x 1,390 x 1,530 mm



FAT 270 NM Metal Horizontal Band Saw

Horizontal band saw
Serial number 5000250546
Cutting 0°/+45°/60°
Cutting capacity in round: 220 mm
Square cutting capacity: 220 mm
Rectangular cutting capacity: 260 x 140 mm
Rotating head 60°
2 working speeds: 30/60 m/min
Motor power 0.75 kW
Band development 2450 x 27 x 0'9 mm

Doesn't start!

Item number: 747226, Manufacturer: FAT, Model / Type: 270 NM, Year of manufacture: 2005, Item available from: Immediately, Item condition: unchecked, Delivery terms: FCA Castelló D´Empuries, loaded on truck, Payment terms: 100% payment prior to collection, weight approx.: 400 kg, dimensions (l x w x h) approx.: 1,280 x 800 x 1,600 mm



ATLAS COPCO GA 408 Screw Compressor

Screw compressor
Serial number ARP 727 741
Power: 30 kW
Working speed: 2925 Rpm
Maximum working pressure: 8 bar
Working hours according to the counter: 53.911 h

Item number: 747241, Manufacturer: ATLAS COPCO, Model / Type: GA 408, Item available from: Immediately, Item condition: unchecked, Delivery terms: FCA Castelló D´Empuries, loaded on truck, Payment terms: 100% payment prior to collection, dimensions (l x w x h) approx.: 2,300 x 1,150 x 1,270 mm, weight approx.: 800 kg



CALDERERÍA IRUSA AA-38 Air Receiver

Air receiver
Serial number 11285
Tank capacity: 900 L
Working pressure: 8 bar

Item number: 747242, Manufacturer: CALDERERÍA IRUSA, Model / Type: AA-38, Year of manufacture: 1992, Item available from: Immediately, Item condition: unchecked, Delivery terms: FCA Castelló D´Empuries, loaded on truck, Payment terms: 100% payment prior to collection, dimensions (l x w x h) approx.: 2,300 x 1,150 x 1,270 mm, weight approx.: 120 kg



Pallet Rack

Pallet rack

Composition:

- 3 frames of 3850 x 700 x 85 mm
- 8 crossbars of 2700 x 85 mm
- 5 frames of 4500 x 700 x 85 mm
- 18 crossbars of 2700 x 100 mm
- 2 frames of 2900 x 730 x 80 mm
- 6 crossbars of 2900 x 105 mm

Anchored to the ground with screws

Content NOT INCLUDED!

Item number: 750461, Item available from: Immediately, Item condition: unchecked, Delivery terms: FCA Castelló D'Empuries, loaded on truck, Payment terms: 100% payment prior to collection, dimensions (l x w x h) approx.: 20,000 x 700 x 4,500 mm, weight approx.: 500 kg



Pallet Rack

Pallet rack

Composition:

- 18 frames of 5000 x 1100 x 80 mm
- 96 crossbars of 2700 x 100 mm

Anchored to the ground with screws

Content NOT INCLUDED!

Item number: 750462, Item available from: Immediately, Item condition: unchecked, Delivery terms: FCA Castelló D'Empuries, loaded on truck, Payment terms: 100% payment prior to collection, length of rack: 2,700 mm, dimensions (l x w x h) approx.: 44,000 x 1,100 x 5,000 mm, weight approx.: 1,000 kg



GRAM PM-60 Industrial Scale

Industrial scale

Serial number NTK 10143

Maximum capacity: 60 kg

Sensitivity: 20 gr.

Weighing surface: 280 x 330 mm

Item number: 750479, Manufacturer: GRAM, Model / Type: PM-60, Item available from: Immediately, Item condition: unchecked, Delivery terms: FCA Castelló D'Empuries, loaded on truck, Payment terms: 100% payment prior to collection, dimensions (l x w x h) approx.: 420 x 280 x 110 mm, weight approx.: 7 kg



Pallet Rack

Pallet rack

Composition:

- 18 frames of 5000 x 1100 x 80 mm
- 36 crossbars of 2700 x 100 mm
- 12 crossbars of 3750 x 110 mm
- 16 crossbars of 1830 x 80 mm

Anchored to the ground with screws

Content NOT INCLUDED!

Item number: 750480, Item available from: Immediately, Item condition: unchecked, Delivery terms: FCA Castelló D'Empuries, loaded on truck, Payment terms: 100% payment prior to collection, dimensions (l x w x h) approx.: 44,000 x 1,100 x 5,000 mm, weight approx.: 1,000 kg



Pallet Rack

Pallet rack

Composition:

- 2 frames of 3650 x 1060 x 75 mm
- 4 crossbars of 2450 x 100 mm
- 5 frames of 4600 x 1060 x 75 mm
- 24 crossbars of 2450 x 100 mm

Anchored to the ground with screws

Content NOT INCLUDED!

Item number: 750488, Item available from: Immediately, Item condition: unchecked, Delivery terms: FCA Castelló D´Empuries, loaded on truck, Payment terms: 100% payment prior to collection, dimensions (l x w x h) approx.: 12,000 x 1,100 x 4,600 mm, weight approx.: 400 kg



UNITEMP EEC 200 Industrial Oven

Industrial oven

Serial number 878

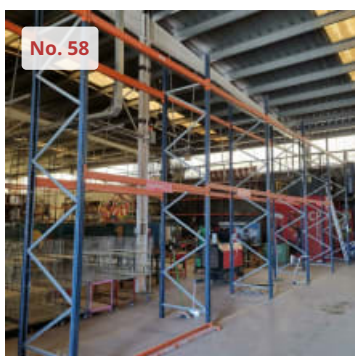
Maximum temperature: 200° C

Power: 5000 W

Capacity: 1300 x 1340 x 405 mm

Temperature manually adjustable

Item number: 750487, Manufacturer: UNITEMP, Model / Type: EEC 200, Item available from: Immediately, Item condition: unchecked, Delivery terms: FCA Castelló D´Empuries, loaded on truck, Payment terms: 100% payment prior to collection, serial number: 878, dimensions (l x w x h) approx.: 1,960 x 1,600 x 1,640 mm, weight approx.: 500 kg



Pallet Rack

Pallet rack

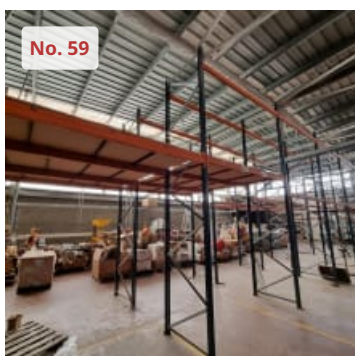
Composition:

- 11 frames of 5000 x 1100 x 80 mm
- 4 crossbars of 1830 x 80 mm
- 34 crossbars of 2700 x 100 mm

Anchored to the ground with screws

Content NOT INCLUDED!

Item number: 750491, Item available from: Immediately, Item condition: unchecked, Delivery terms: FCA Castelló D´Empuries, loaded on truck, Payment terms: 100% payment prior to collection, dimensions (l x w x h) approx.: 22,000 x 1,100 x 5,000 mm, weight approx.: 350 kg



Pallet Rack

Pallet rack

Composition:

- 4 frames of 4650 x 1070 x 70 mm
- 26 crossbars of 2450 x 100 mm
- 21 frames of 5000 x 1100 x 80 mm
- 58 crossbars of 2700 x 100 mm
- 12 crossbars of 2700 x 120 mm
- 2 frames of 6000 x 1000 x 80 mm
- 4 crossbars of 3750 x 120 mm

Anchored to the ground with screws

Content NOT INCLUDED!

Item number: 750495, Item available from: Immediately, Item condition: unchecked, Delivery terms: FCA Castelló D´Empuries, loaded on truck, Payment terms: 100% payment prior to collection, dimensions (l x w x h) approx.: 35,000 x 1,100 x 6,000 mm, weight approx.: 750 kg



COMTABE CR 30-8 Screw Compressor

Screw compressor
Serial number 1002059
Power 22 kW
Maximum working pressure: 8 bar
Flow rate: 216 m³/h
Working hours according to counter: 24783 h
CE Standards

Item number: 746557, Manufacturer: COMTABE, Model / Type: CR 30-8, Year of manufacture: 2000, Item available from: Immediately, Item condition: unchecked, Delivery terms: FCA Castelló D'Empuries, loaded on truck, Payment terms: 100% payment prior to collection, dimensions (l x w x h) approx.: 1,150 x 870 x 1,160 mm, weight approx.: 250 kg



COMTABE CR 30-8 Screw Compressor

Screw compressor
Serial number 1052567
Power 22 kW
Maximum working pressure: 8 bar
Flow rate: 216 m³/h
Working hours according to counter: 20568 h
CE Standards

Item number: 746550, Manufacturer: COMTABE, Model / Type: CR 30-8, Year of manufacture: 2005, Item available from: Immediately, Item condition: unchecked, Delivery terms: FCA Castelló D'Empuries, loaded on truck, Payment terms: 100% payment prior to collection, dimensions (l x w x h) approx.: 1,160 x 880 x 1,195 mm, weight approx.: 250 kg



ULTRAFILTER ARTIC 230 Air Dryer

Air dryer
Serial number 36794198
Workflow: 230 m³/h
Maximum pressure: 16 bar
220V connection
Frequency: 50Hz
Power 1.04 kW
CE Standards

Item number: 746554, Manufacturer: ULTRAFILTER, Model / Type: ARTIC 230, Item available from: Immediately, Item condition: unchecked, Delivery terms: FCA Castelló D'Empuries, loaded on truck, Payment terms: 100% payment prior to collection, dimensions (l x w x h) approx.: 780 x 510 x 835 mm, weight approx.: 60 kg



TALLERES CORTINA FAU 2076 Air Receiver

Air receiver
Serial number 16636
Working pressure: 12 bar

Item number: 746558, Manufacturer: TALLERES CORTINA, Model / Type: FAU 2076, Item available from: Immediately, Item condition: unchecked, Delivery terms: FCA Castelló D'Empuries, loaded on truck, Payment terms: 100% payment prior to collection, dimensions (l x w x h) approx.: 750 x 750 x 2,300 mm, weight approx.: 150 kg



FORMECO S 12 A Solvent Distillation Unit

Solvent distillation unit
Serial number 33060
Capacity: 12 L
Connection: 230V
Power: 0.85 kW
Maximum working temperature: 320° C
Diathermic oil capacity: 6 L
CE Standards

Item number: 746549, Manufacturer: FORMECO, Model / Type: S 12 A, Year of manufacture: 2007, Item available from: Immediately, Item condition: unchecked, Delivery terms: FCA Castelló D´Empuries, loaded on truck, Payment terms: 100% payment prior to collection, dimensions (l x w x h) approx.: 560 x 560 x 1,400 mm, weight approx.: 60 kg



TALLERES TORVIL PAC-7 / CA-88-7 Industrial Heater

Industrial heater
Serial number 97-005
Motor power: 7.5 kW
Burner JOANNES AZ
Heating power: 70.000 - 151.000 Kcal/h
Fuel: Diesel

Note: Will be delivered disassembled in 3 parts (2000 x 1000 x 990 / 2000 x 1000 x 1550 / 2000 x 1000 x 1100 mm approx.)

Item number: 746568, Manufacturer: TALLERES TORVIL, Model / Type: PAC-7 / CA-88-7, Year of manufacture: 1997, Item available from: Immediately, Item condition: unchecked, Delivery terms: FCA Castelló D´Empuries, loaded on truck, Payment terms: 100% payment prior to collection, fuel: GAS-OIL, dimensions (l x w x h) approx.: 2,000 x 1,000 x 3,640 mm, weight approx.: 1,000 kg



INCOS M-125-LI-G Industrial Heater

Industrial heater
Serial number 100,410
Heating power: 125.000 W/h
Air volume: 8.800 m³/h
Fuel: Diesel
Fan motor power: 1.5 kW

Item number: 746567, Manufacturer: INCOS, Model / Type: M-125-LI-G, Item available from: Immediately, Item condition: unchecked, Delivery terms: FCA Castelló D´Empuries, loaded on truck, Payment terms: 100% payment prior to collection, fuel: GAS-OIL, dimensions (l x w x h) approx.: 7,800 x 1,300 x 2,000 mm, weight approx.: 350 kg



Pallet Rack

Pallet rack
Composition:
· 5 frames of 4550 x 1100 x 100 mm
· 18 crossbars of 2700 x 135 mm
Height adjustable shelves every 50 mm
Anchored to the ground with screws

Item number: 746565, Item available from: Immediately, Item condition: unchecked, Delivery terms: FCA Castelló D´Empuries, loaded on truck, Payment terms: 100% payment prior to collection, length of rack: 2,700 mm, dimensions (l x w x h) approx.: 8,500 x 1,100 x 4,550 mm, weight approx.: 250 kg



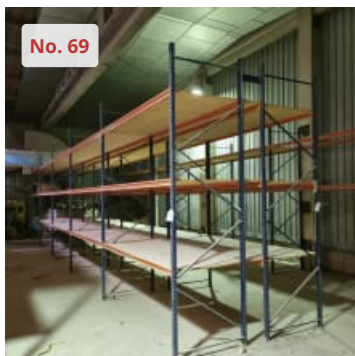
MECALUX 7515 Industrial Racks

Industrial rack

Composition:

- 12 frames of 3500 x 1000 x 50 mm
 - 56 crossbars of 2700 x 75 mm
- Anchored to the ground with screws
Content not included

Item number: 746566, Manufacturer: MECALUX, Model / Type: 7515, Item available from: Immediately, Item condition: unchecked, Delivery terms: FCA Castelló D´Empuries, loaded on truck, Payment terms: 100% payment prior to collection, length of rack: 2,700 mm, dimensions (l x w x h) approx.: 28,000 x 1,000 x 3,500 mm, weight approx.: 700 kg



MECALUX 7515 Industrial Racks

Industrial rack

Composition:

- 14 frames of 3500 x 1000 x 50 mm
 - 64 crossbars of 2700 x 75 mm
- Anchored to the ground with screws
Content not included

Item number: 746564, Manufacturer: MECALUX, Model / Type: 7515, Item available from: Immediately, Item condition: unchecked, Delivery terms: FCA Castelló D´Empuries, loaded on truck, Payment terms: 100% payment prior to collection, length of rack: 2,700 mm, dimensions (l x w x h) approx.: 33,000 x 1,000 x 3,500 mm, weight approx.: 800 kg



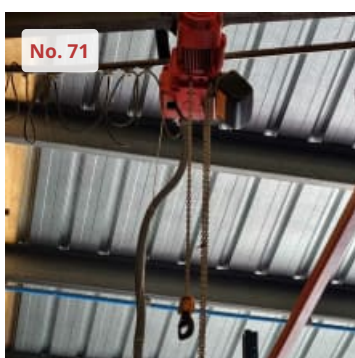
MECALUX 7515 Industrial Racks

Industrial rack

Composition:

- 7 frames of 3500 x 1000 x 50 mm
 - 24 crossbars of 2700 x 75 mm
- Anchored to the ground with screws
Content not included

Item number: 746563, Manufacturer: MECALUX, Model / Type: 7515, Item available from: Immediately, Item condition: unchecked, Delivery terms: FCA Castelló D´Empuries, loaded on truck, Payment terms: 100% payment prior to collection, length of rack: 2,700 mm, dimensions (l x w x h) approx.: 16,500 x 1,000 x 3,500 mm, weight approx.: 250 kg



KAISER + KRAFT SID3F 250/1 Lifting equipments

Hoist

Serial number 61470005

Load capacity: 250 kg

Lifting speed: 1 to 2 m/min

With control switch

CE Standards

Structure NOT INCLUDED!!

Item number: 750496, Manufacturer: KAISER + KRAFT, Model / Type: SID3F 250/1, Year of manufacture: 2003, Item available from: Immediately, Item condition: unchecked, Delivery terms: FCA Castelló D´Empuries, loaded on truck, Payment terms: 100% payment prior to collection, dimensions (l x w x h) approx.: 1,000 x 500 x 500 mm, weight approx.: 60 kg



YALE LP LPG Forklift

Gas forklift
Serial number N549282
Maximum load capacity: 3000 Kg
Minimum passage height: 2120 mm
Fork length: 1070 x 100 x 40 mm
Maximum forks opening: 780 mm
Triplex mast
Max. lifting height: 4800 mm
3 operations: Tilt / Side Shift / Raising-Lowering
With lights and seat belt
Working hours according to the counter: 3422 h
Fuel: GAS

It will be delivered at the end of the loading period

Item number: 750498, Manufacturer: YALE, Model / Type: LP, Item available from: Immediately, Item condition: unchecked, Delivery terms: FCA Castelló D´Empuries, loaded on truck, Payment terms: 100% payment prior to collection, serial number: N549282, loading capacity: 3,000 to, lifting height: 4,800 mm, length of forks: 1070 x 100 mm, overall height: 2,120 mm, operating hours: 3,422 h, dimensions (l x w x h) approx.: 3,200 x 1,000 x 2,120 mm, weight approx.: 6,000 kg



HECO Lot of 3 Workbenches

Set of 3 workbenches

- 1 workbench of 1800 x 750 x 1800 mm
- 1 workbench of 1800 x 1030 x 1800 mm
- 1 workbench of 1800 x 800 x 1800 mm

Content included

Item number: 750691, Manufacturer: HECO, Item available from: Immediately, Item condition: unchecked, Delivery terms: FCA Castelló D´Empuries, loaded on truck, Payment terms: 100% payment prior to collection, weight approx.: 300 kg, dimensions (l x w x h) approx.: 2,000 x 2,600 x 1,800 mm



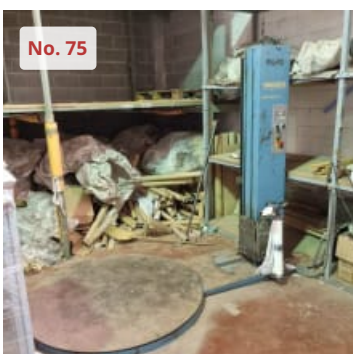
HECO Lot of 3 Workbenches

Set of 3 workbenches

- 1 workbench of 1800 x 750 x 1800 mm
- 2 workbenches of 1800 x 800 x 1800 mm

Content included

Item number: 750692, Manufacturer: HECO, Item available from: Immediately, Item condition: unchecked, Delivery terms: FCA Castelló D´Empuries, loaded on truck, Payment terms: 100% payment prior to collection, weight approx.: 300 kg, dimensions (l x w x h) approx.: 2,000 x 2,400 x 1,800 mm



SERPACK PALFIX MINI Wrapping Machine

Wrapping machine
Serial number 9216
Plate diameter: 1500 mm
Approximate maximum strapping height: 1900 mm
Coil height: 520 mm
Connection: 380 V
Frequency: 50 HZ

Item number: 750500, Manufacturer: SERPACK, Model / Type: PALFIX MINI, Item available from: Immediately, Item condition: unchecked, Delivery terms: FCA Castelló D´Empuries, loaded on truck, Payment terms: 100% payment prior to collection, dimensions (l x w x h) approx.: 1,500 x 2,500 x 2,200 mm, weight approx.: 400 kg



Work Tools

Lot of work tools

Composed of:

- 3 MAKITA cordless drills
- 3 BOSCH hammer drills

Item number: 750503, Item available from: Immediately, Item condition: unchecked, Delivery terms: FCA Castelló D´Empuries, loaded on truck, Payment terms: 100% payment prior to collection, dimensions (l x w x h) approx.: 1,150 x 730 x 120 mm, weight approx.: 50 kg



HECO Lot of 3 Workbenches

Lot of 3 workbenches

- 2 workbenches of 1800 x 800 x 1800 mm
- 1 workbench of 2000 x 1010 x 1800 mm

Content included

Item number: 750504, Manufacturer: HECO, Item available from: Immediately, Item condition: unchecked, Delivery terms: FCA Castelló D´Empuries, loaded on truck, Payment terms: 100% payment prior to collection, weight approx.: 300 kg, dimensions (l x w x h) approx.: 2,000 x 2,600 x 1,800 mm



Aluminum Ladders

Lot of aluminum ladders

12 units

Different models, brands and sizes

Item number: 750561, Item available from: Immediately, Item condition: unchecked, Delivery terms: FCA Castelló D´Empuries, loaded on truck, Payment terms: 100% payment prior to collection, dimensions (l x w x h) approx.: 4,000 x 2,900 x 2,400 mm, weight approx.: 120 kg



Hand Pallet Trucks

Lot of 2 hand pallet trucks:

- 1 YALE hand pallet truck
Load capacity: 2500 Kg
Fork length: 1150 x 160 mm
Loading surface: 1150 x 520 mm
- 1 GAYNER hand pallet truck
Load capacity: 2500 Kg
Fork length: 800 x 160 mm
Loading surface: 800 x 530 mm

Item number: 750560, Item available from: Immediately, Item condition: unchecked, Delivery terms: FCA Castelló D´Empuries, loaded on truck, Payment terms: 100% payment prior to collection, dimensions (l x w x h) approx.: 1,300 x 1,700 x 1,300 mm, weight approx.: 140 kg



STILL FM 14 Reach Truck

Electric reach truck
Load capacity: 1400 kg
Fork measurements: 1150 x 100 x 40 mm
Operations:
· Front displacement of the forks
· Lateral displacement of the forks
· Raising and lowering of the forks
· Mast tilt
Triplex mast
Minimum passage height: 2800 mm
48V battery
Battery charger included

Without starter key!!
Possibly defective !!

Item number: 750572, Manufacturer: STILL, Model / Type: FM 14, Year of manufacture: 1996, Item available from: Immediately, Item condition: defect, Delivery terms: FCA Castelló D´Empuries, loaded on truck, Payment terms: 100% payment prior to collection, dimensions (l x w x h) approx.: 2,600 x 1,250 x 2,800 mm, weight approx.: 3,200 kg



Hand Pallet Trucks

Lot of 2 hand pallet trucks:

- 1 NOBLELIFT DF25 hand pallet truck
Load capacity: 2500 Kg
Fork length: 1150 x 160 mm
Loading surface: 1150 x 540 mm
- 1 GAYNER hand pallet truck
Load capacity: 2500 Kg
Fork length: 1150 x 160 mm
Loading surface: 1150 x 540 mm

Item number: 750570, Item available from: Immediately, Item condition: unchecked, Delivery terms: FCA Castelló D´Empuries, loaded on truck, Payment terms: 100% payment prior to collection, dimensions (l x w x h) approx.: 1,400 x 1,600 x 1,300 mm, weight approx.: 150 kg



Lot of 35 Containers

Lot of 35 containers
Composed by:

- 25 containers of 790 x 490 x 500 mm
Useful capacity: 740 x 440 x 390 mm
- 10 containers of 990 x 775 x 625 mm
Useful capacity: 950 x 730 x 490 mm

Stackable and not removable containers

Item number: 750506, Item available from: Immediately, Item condition: unchecked, Delivery terms: FCA Castelló D´Empuries, loaded on truck, Payment terms: 100% payment prior to collection, dimensions (l x w x h) approx.: 4,000 x 3,500 x 2,100 mm, weight approx.: 2,000 kg



SCHEPPACH HBS-32 vario Band Saw

Band saw
Serial number 17219-03
Worktable size: 375 x 375 mm
45° tiltable table
Pulleys diameter: 320 mm
Saw width: 9 mm
Working speed: 300-700 m/min
With LED lighting system for better visibility
Support table included

Item number: 750575, Manufacturer: SCHEPPACH, Model / Type: HBS-32 vario, Year of manufacture: 1986, Item available from: Immediately, Item condition: unchecked, Delivery terms: FCA Castelló D'Empuries, loaded on truck, Payment terms: 100% payment prior to collection, dimensions (l x w x h) approx.: 820 x 500 x 1,700 mm, weight approx.: 150 kg



METALWORKS SHOP PRESS Hydraulic Press

Hydraulic press
Pressing force: 10 Tn
Table size: 340 x 135 mm
Manual operated
Height-adjustable table every 85 mm (3 positions)
Measurements of the support table: 1300 x 700 x 880 mm
Table included

Item number: 750845, Manufacturer: METALWORKS, Model / Type: SHOP PRESS, Item available from: Immediately, Item condition: unchecked, Delivery terms: FCA Castelló D'Empuries, loaded on truck, Payment terms: 100% payment prior to collection, dimensions (l x w x h) approx.: 1,300 x 700 x 2,000 mm, weight approx.: 200 kg



HEDISA T.D.17/R Bench Drilling Machine (metal)

Bench drill
Serial number 17223
Capacity: 17 mm
6 working speeds: 400 - 700 - 1000 - 1500 - 2200 - 3500 Rpm
Spindle vertical travel: 120 mm
Table size: 210 x 300 mm
Motor power: 0.37 kW
Support table of 800 x 600 x 820 mm included

Item number: 750848, Manufacturer: HEDISA, Model / Type: T.D.17/R, Item available from: Immediately, Item condition: unchecked, Delivery terms: FCA Castelló D'Empuries, loaded on truck, Payment terms: 100% payment prior to collection, dimensions (l x w x h) approx.: 800 x 600 x 1,900 mm, weight approx.: 100 kg



Hydraulic Press

Hydraulic press
Maximum vertical travel: 220 mm approx.
Table measurements: 450 x 250 mm
Hydraulic pump power: 0.55 kW
Pedal operated
Tools included

Item number: 750850, Item available from: Immediately, Item condition: unchecked, Delivery terms: FCA Castelló D'Empuries, loaded on truck, Payment terms: 100% payment prior to collection, dimensions (l x w x h) approx.: 800 x 840 x 1,950 mm, weight approx.: 300 kg, table surface area l x w : 450 x 250 mm, stroke: 220 mm



Work Tools

Lot of work tools
Composed of drills, riveters, cable strippers, and many others
See photos for more information

Item number: 750841, Item available from: Immediately, Item condition: unchecked, Delivery terms: FCA Castelló D´Empuries, loaded on truck, Payment terms: 100% payment prior to collection, dimensions (l x w x h) approx.: 1,500 x 1,700 x 300 mm, weight approx.: 50 kg



Work Tools

Lot of work tools
Composed of pneumatic tools, clamping units, riveters, drilling elements, and many others
See photos for more information

Item number: 750843, Item available from: Immediately, Item condition: unchecked, Delivery terms: FCA Castelló D´Empuries, loaded on truck, Payment terms: 100% payment prior to collection, dimensions (l x w x h) approx.: 3,900 x 750 x 350 mm, weight approx.: 100 kg



Work Tools

Lot of work tools
Composed of drills, clamping units, pneumatic tools, and many others
See photos for more information

Item number: 750842, Item available from: Immediately, Item condition: unchecked, Delivery terms: FCA Castelló D´Empuries, loaded on truck, Payment terms: 100% payment prior to collection, dimensions (l x w x h) approx.: 1,800 x 800 x 200 mm, weight approx.: 50 kg



Lot of 3 Workshop Trolleys

Lot of 3 workshop trolleys
Individual measurements: 820 x 460 x 900 mm
With a storage tray on top and a drawer for tools
With wheels for easy transport
Content included

Item number: 750814, Item available from: Immediately, Item condition: unchecked, Delivery terms: FCA Castelló D´Empuries, loaded on truck, Payment terms: 100% payment prior to collection, dimensions (l x w x h) approx.: 1,400 x 850 x 900 mm, weight approx.: 120 kg



Lot of 3 Workshop Trolleys

Lot of 3 workshop trolleys
Individual measurements: 820 x 460 x 900 mm
With a storage tray on top and a drawer for tools
With wheels for easy transport
Content included

Item number: 750815, Item available from: Immediately, Item condition: unchecked, Delivery terms: FCA Castelló D´Empuries, loaded on truck, Payment terms: 100% payment prior to collection, dimensions (l x w x h) approx.: 1,400 x 850 x 900 mm, weight approx.: 120 kg



Lot of 2 Workshop Trolleys

Lot of 2 workshop trolleys

· 1 METALCO FACOM trolley of 770 x 440 x 1000 mm
With 4 drawers for tool storage
With wheels for easy transport

· 1 trolley of 1160 x 460 x 900 mm
With 8 drawers and 1 door for tool storage
With wheels for easy transport

Content included

Item number: 750819, Item available from: Immediately, Item condition: unchecked, Delivery terms: FCA Castelló D'Empuries, loaded on truck, Payment terms: 100% payment prior to collection, dimensions (l x w x h) approx.: 2,000 x 480 x 1,000 mm, weight approx.: 80 kg



Lot of Machines and Work Tools

Lot of machines and work tools

Composed of 2 foot drills, 3 double-end grinders, clamping units and other hand tools
See photos for more information

Item number: 750821, Item available from: Immediately, Item condition: unchecked, Delivery terms: FCA Castelló D'Empuries, loaded on truck, Payment terms: 100% payment prior to collection, dimensions (l x w x h) approx.: 1,800 x 800 x 600 mm, weight approx.: 200 kg



HECO Workshop Trolleys

Lot of 6 workshop trolleys
Individual measurements: 360 x 700 x 830 mm
With 3 shelves of 340 x 620 mm
With wheels for easy transport

Item number: 750617, Manufacturer: HECO, Item available from: Immediately, Item condition: unchecked, Delivery terms: FCA Castelló D'Empuries, loaded on truck, Payment terms: 100% payment prior to collection, dimensions (l x w x h) approx.: 2,300 x 700 x 800 mm, weight approx.: 100 kg



HECO Workshop Trolleys

Lot of 6 workshop trolleys
Individual measurements: 360 x 700 x 830 mm
With 3 shelves of 340 x 620 mm
With wheels for easy transport

Item number: 750616, Manufacturer: HECO, Item available from: Immediately, Item condition: unchecked, Delivery terms: FCA Castelló D'Empuries, loaded on truck, Payment terms: 100% payment prior to collection, dimensions (l x w x h) approx.: 2,300 x 700 x 800 mm, weight approx.: 100 kg



Lot of 5 Vacuum Cleaners

Lot of 5 vacuum cleaners
Different models, brands and powers

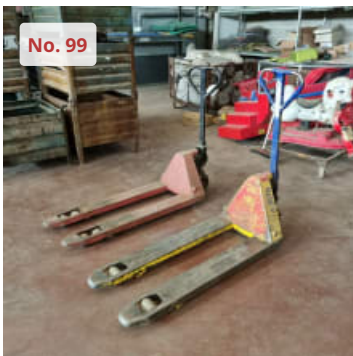
Item number: 750622, Item available from: Immediately, Item condition: unchecked, Delivery terms: FCA Castelló D´Empuries, loaded on truck, Payment terms: 100% payment prior to collection, dimensions (l x w x h) approx.: 1,800 x 1,000 x 1,300 mm, weight approx.: 50 kg



Lot of 8 Metal Cages

Lot of 8 industrial cages
Individual measurements: 1220 x 850 x 1180 mm
Partially removable
Stackable

Item number: 750621, Item available from: Immediately, Item condition: unchecked, Delivery terms: FCA Castelló D´Empuries, loaded on truck, Payment terms: 100% payment prior to collection, dimensions (l x w x h) approx.: 3,700 x 900 x 3,450 mm, weight approx.: 200 kg



Hand Pallet Trucks

Lot of 2 hand pallet trucks:

· 1 STÖCKLIN hand pallet truck
Fork length: 1150 x 160 mm
Loading surface: 1150 x 540 mm

· 1 PRAMAC LIFTER GS hand pallet truck
Fork length: 1150 x 160 mm
Loading surface: 1150 x 540 mm

Item number: 750609, Item available from: Immediately, Item condition: unchecked, Delivery terms: FCA Castelló D´Empuries, loaded on truck, Payment terms: 100% payment prior to collection, dimensions (l x w x h) approx.: 1,600 x 1,100 x 1,250 mm, weight approx.: 150 kg



Hand Pallet Truck

Lot of 2 hand pallet trucks:

· 1 STÖCKLIN hand pallet truck
Load capacity: 2000 Kg
Fork length: 1150 x 160 mm
Loading surface: 1150 x 530 mm

· 1 hand pallet truck
Fork length: 1150 x 160 mm
Loading surface: 1150 x 540 mm

Item number: 751331, Item available from: Immediately, Item condition: unchecked, Delivery terms: FCA Castelló D´Empuries, loaded on truck, Payment terms: 100% payment prior to collection, dimensions (l x w x h) approx.: 1,600 x 1,400 x 1,160 mm, weight approx.: 150 kg



EUREKA MACH1 EB Industrial Sweeper

Industrial sweeper
Serial number 1176
Power: 0.45 kW
Maximum working inclination: 2%
Brush diameter: 450 mm
12V battery

Without battery!!

Item number: 751330, Manufacturer: EUREKA, Model / Type: MACH1 EB, Year of manufacture: 2002, Item available from: Immediately, Item condition: unchecked, Delivery terms: FCA Castelló D´Empuries, loaded on truck, Payment terms: 100% payment prior to collection, dimensions (l x w x h) approx.: 1,500 x 1,000 x 900 mm, weight approx.: 150 kg



HECO Workshop Trolleys

Lot of 2 tool trolleys
Individual measurements: 350 x 350 x 900 mm
They have a folding shutter on both sides
Content included
With wheels for easy transport

Item number: 751360, Manufacturer: HECO, Item available from: Immediately, Item condition: unchecked, Delivery terms: FCA Castelló D´Empuries, loaded on truck, Payment terms: 100% payment prior to collection, dimensions (l x w x h) approx.: 650 x 700 x 900 mm, weight approx.: 60 kg



Lot of 5 Standing Fans

Lot of 5 standing fans
Different models, diameters and powers
See photos for more information

Item number: 751362, Item available from: Immediately, Item condition: unchecked, Delivery terms: FCA Castelló D´Empuries, loaded on truck, Payment terms: 100% payment prior to collection, dimensions (l x w x h) approx.: 3,200 x 800 x 1,500 mm, weight approx.: 60 kg



Lot of 2 Industrial Fans

Lot of 2 industrial fans
Tiltable
220 V connection

Item number: 751361, Item available from: Immediately, Item condition: unchecked, Delivery terms: FCA Castelló D´Empuries, loaded on truck, Payment terms: 100% payment prior to collection, dimensions (l x w x h) approx.: 1,600 x 800 x 900 mm, weight approx.: 20 kg



Industrial Mixer

Industrial mixer
Tank diameter: 500 mm
Tank height: 400 mm
With wheels for easy transport

Item number: 751363, Item available from: Immediately, Item condition: unchecked, Delivery terms: FCA Castelló D'Empuries, loaded on truck, Payment terms: 100% payment prior to collection, dimensions (l x w x h) approx.: 700 x 1,200 x 800 mm, weight approx.: 60 kg



ROSAUTO 175 A Other Workshop Supply

Solvent cleaning machine
Serial number 189
Tank capacity: 25 L
Maximum pressure 10 bar
Useful capacity: 370 x 480 x 320 mm
CE Standards

Item number: 751368, Manufacturer: ROSAUTO, Model / Type: 175 A, Year of manufacture: 2003, Item available from: Immediately, Item condition: unchecked, Delivery terms: FCA Castelló D'Empuries, loaded on truck, Payment terms: 100% payment prior to collection, dimensions (l x w x h) approx.: 820 x 760 x 1,650 mm, weight approx.: 80 kg



NOREXCO Sandblasting Machines

Lot of sandblasting machines
2 units
Tank diameter: 600 mm
Tank height: 700 mm
With wheels for easy transport

Item number: 751369, Manufacturer: NOREXCO, Item available from: Immediately, Item condition: unchecked, Delivery terms: FCA Castelló D'Empuries, loaded on truck, Payment terms: 100% payment prior to collection, dimensions (l x w x h) approx.: 2,000 x 1,200 x 1,700 mm, weight approx.: 200 kg



QUANTUM B 16F Bench Drilling Machine

Bench drill
Table measures: 200 x 200 mm
Capacity: 16 mm
Spindle: MK2
Motor power: 450 W
5 working speeds from 660 to 2500 Rpm
Clamping jaw included

Item number: 751370, Manufacturer: QUANTUM, Model / Type: B 16F, Year of manufacture: 2003, Item available from: Immediately, Item condition: unchecked, Delivery terms: FCA Castelló D'Empuries, loaded on truck, Payment terms: 100% payment prior to collection, dimensions (l x w x h) approx.: 600 x 300 x 840 mm, weight approx.: 50 kg



BIRO 44 Band Saw

Band saw
Serial number 5926
Pulleys diameter: 450 mm
Table measurements: 1070 x 960 mm
Guide length: 370 mm

Item number: 751374, Manufacturer: BIRO, Model / Type: 44, Item available from: Immediately, Item condition: unchecked, Delivery terms: FCA Castelló D´Empuries, loaded on truck, Payment terms: 100% payment prior to collection, dimensions (l x w x h) approx.: 1,250 x 1,300 x 2,100 mm, weight approx.: 400 kg



Clamping Units

Clamping units
Different brands, models and sizes
Trolley not included

Item number: 751375, Item available from: Immediately, Item condition: unchecked, Delivery terms: FCA Castelló D´Empuries, loaded on truck, Payment terms: 100% payment prior to collection, dimensions (l x w x h) approx.: 3,060 x 740 x 500 mm, weight approx.: 200 kg



MOTORMAN Hand Pallet Truck

Hand pallet truck
Load capacity: 2000 kg
Fork length: 1125 x 180 mm
Loading surface: 1125 x 560 mm
The scale does not work
Without battery!!

Item number: 751382, Manufacturer: MOTORMAN, Item available from: Immediately, Item condition: unchecked, Delivery terms: FCA Castelló D´Empuries, loaded on truck, Payment terms: 100% payment prior to collection, dimensions (l x w x h) approx.: 1,600 x 560 x 1,300 mm, weight approx.: 180 kg



TMB B 1000 Industrial Vacuum Cleaner

Industrial vacuum cleaner
Serial number 54613
Tank diameter: 420 mm
Tank height: 700 mm
Motor power: 3 HP - 1850 Rpm
Three-phase connection
With wheels for easy transport
CE standards

Item number: 751386, Manufacturer: TMB, Model / Type: B 1000, Year of manufacture: 1997, Item available from: Immediately, Item condition: unchecked, Delivery terms: FCA Castelló D´Empuries, loaded on truck, Payment terms: 100% payment prior to collection, dimensions (l x w x h) approx.: 1,200 x 700 x 1,000 mm, weight approx.: 30 kg



PRAMAC TMC 10/20 Electric Pallet Truck

Electric pallet truck
Serial number 011529
Load capacity: 1000 Kg
Fork length: 1150 x 150 mm
Loading surface: 1150 x 560 mm
Minimum passage height: 2400 mm
12V battery
The battery needs to be checked!

Item number: 751388, Manufacturer: PRAMAC, Model / Type: TMC 10/20, Year of manufacture: 1998, Item available from: Immediately, Item condition: unchecked, Delivery terms: FCA Castelló D´Empuries, loaded on truck, Payment terms: 100% payment prior to collection, dimensions (l x w x h) approx.: 1,800 x 900 x 2,400 mm, weight approx.: 350 kg



Working Tools

Lot of work tools
Includes a miter saw, a double-end grinder, pneumatic elements, among others
See photos for more information

Item number: 751385, Item available from: Immediately, Item condition: unchecked, Delivery terms: FCA Castelló D´Empuries, loaded on truck, Payment terms: 100% payment prior to collection, dimensions (l x w x h) approx.: 2,500 x 1,000 x 400 mm, weight approx.: 120 kg



CLARK LPG Forklift

LPG forklift
Fork length 900 x 100
Minimum passage height 2200 mm
Max lifting height: 4300 mm
Load capacity: 2000 Kg
Duplex mast
Working hours according to the counter: 1703h
Solid wheels
Fuel: GAS
It has an extra longer blades

The braking system needs to be checked!!

Item number: 751387, Manufacturer: CLARK, Item available from: Immediately, Item condition: unchecked, Delivery terms: FCA Castelló D´Empuries, loaded on truck, Payment terms: 100% payment prior to collection, loading capacity: 2,000 to, lifting height: 4,300 mm, dimensions (l x w x h) approx.: 3,700 x 1,300 x 2,200 mm, weight approx.: 4,600 kg



KARCHER HDS 5/15 U High Pressure Cleaner

High pressure industrial cleaner
Serial number 010525
Water flow: 450 l/h
Working pressure: 150 bar
Maximum temperature: 80° C
Connection power: 2.7 kW
Diesel consumption at full load: 2.4 kg/h
Fuel tank: 6.5 L
Spray lance length: 840 mm
10 mm high pressure hose
230 V connection

With wheels for easy transport

Item number: 751607, Manufacturer: KÄRCHER, Model / Type: HDS 5/15 U, Year of manufacture: 2017, Item available from: Immediately, Item condition: unchecked, Delivery terms: FCA Castelló D'Empuries, loaded on truck, Payment terms: 100% payment prior to collection, dimensions (l x w x h) approx.: 620 x 650 x 1,330 mm, weight approx.: 76 kg