

Auction Catalogue

Construction Machinery - No Reserve Prices!

Viewing by appointment only!

various locations, Portugal

29 lots

Bidding ends:

Thursday, 19/05/2022, 11:00(local time)

Bids are welcome immediately and can be placed at:

Contact:

Agustin Fernandez
+34 936 393 895
agustin.fernandez@surplex.com
www.surplex.com

Viewing:

Viewing by appointment only!

various locations, Portugal

Monday, **16/05/2022**, from 10:30 to 18:00

Description:

Construction machinery.

Main lots:

- CATERPILLAR D7E Bulldozer
- CATERPILLAR 966K XE Wheel Loader
- CATERPILLAR 950 M Wheel Loader
- HYUNDAI HL 770-9 Wheel Loader
and others



GESAN DVS 250 Power Generator

Power generator
Serial number 210474
YOM: 2007
Power: 200 kW
Working speed: 1500 Rpm
Frequency: 50 Hz
Voltage: 230-400 V
Engine: VOLVO PENTA TAD 734 GE
Engine power: 250 kW
Alternator: STAMFORD UC1274K1
Control: ComAp IntelliGen

Fuel: Diesel
Working hours according to counter: 16743 h
CE Standards

Item number: 729237, Manufacturer: GESAN, Model / Type: DVS 250, Year of manufacture: 2007, Item available from: Immediately, Item condition: unchecked, Delivery terms: FCA Porto Alto, Samora Correia, loaded on truck, Payment terms: 100% payment prior to collection, dimensions (l x w x h) approx.: 3,690 x 1,420 x 2,320 mm, weight approx.: 3,980 kg



JLG 1930ES Electric Scissor Lift

Electric scissor lift
Serial number 1200020498
YOM: 2008
Max lifting height: 7,6 m
Max platform height: 5,7 m
Maximum load capacity: 230 kg
Maximum load capacity (inside): 2P + 70 kg
Maximum load capacity (outdoors): 1P + 40 kg
Maximum inclination: 5°
Maximum wind speed: 12.5 m/sec
Travel speed: 4.8 km/h

Battery: 24V
Solid wheels: 323 x 100 mm
Working hours according to counter: 663 h
CE Standards

Item number: 728540, Manufacturer: JLG, Model / Type: 1930ES, Year of manufacture: 2008, Item available from: Immediately, Item condition: unchecked, Delivery terms: FCA Porto Alto, Samora Correia, loaded on truck, Payment terms: 100% payment prior to collection, dimensions (l x w x h) approx.: 2,000 x 800 x 1,960 mm, weight approx.: 1,480 kg



HIMOINSA HPW-50 T5 INS Power Generator

Power generator
Serial number 7111639
YOM: 2007
Power: 33.1 kW
Working speed: 1500 RPM
Frequency: 50Hz
Voltage: 230-400V
Engine: PERKINS
Alternator: STAMFORD UC.I224D1
Control: DEEP SEA ELECTRONICS DSE 7310 MKII
Fuel: Diesel

Working hours according to counter: 20302 h
CE Standards

Item number: 729672, Manufacturer: HIMOINSA, Model / Type: HPW-50 T5 INS, Year of manufacture: 2007, Item available from: Immediately, Item condition: unchecked, Delivery terms: FCA Porto Alto, Samora Correia, loaded on truck, Payment terms: 100% payment prior to collection, dimensions (l x w x h) approx.: 2,270 x 1,080 x 1,360 mm, weight approx.: 1,315 kg

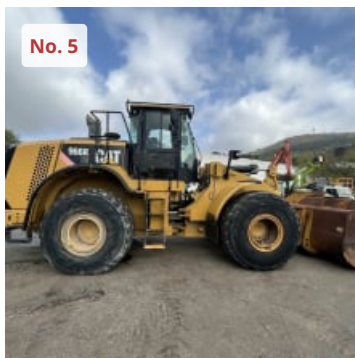


GESAN DVS 140 Power Generator

Power generator
Serial number 212406
YOM: 2007
Power: 101 kW
Working speed: 1500 Rpm
Frequency: 50 Hz
Voltage: 230-400 V
Engine: VOLVO PENTA TAD 730 GE
Engine power: 136 kW
Alternator: STAMFORD UCI274E1
Control: DEEP SEA ELECTRONICS DSE 7320 MKII

Fuel: Diesel
Working hours according to counter: 17504 h
CE Standards

Item number: 729239, Manufacturer: GESAN, Model / Type: DVS 140, Year of manufacture: 2007, Item available from: Immediately, Item condition: unchecked, Delivery terms: FCA Porto Alto, Samora Correia, loaded on truck, Payment terms: 100% payment prior to collection, dimensions (l x w x h) approx.: 3,530 x 1,140 x 1,840 mm, weight approx.: 2,590 kg



CATERPILLAR 966K XE Wheel Loader

Serial number CAT0966KKNX00231
YOM: 2013
Weight 24000 Kg
Standard tires 26.5 R25
Bucket width 3.22 m
Standards bucket capacity 4.2 m³
Steering type: KL
Max. Speed: 37.4 km/h
Max pouring height: 4,234m
Lifting power: 173 kN
Caterpillar engine

Engine model C9 Acert
Total power 250 kW
Hours of work according to meter: 12,393 h
With air conditioning
CE Standards

Item number: 738236, Manufacturer: CATERPILLAR, Model / Type: 966K XE, Year of manufacture: 2013, Item available from: immediate, Item condition: unchecked, Delivery terms: EXW Alcaíña - SÃO MIGUEL DE ALCAINÇA,, ex foundation, unpackaged, Payment terms: 100% payment prior to collection, dimensions (l x w x h) approx.: 9,000 x 3,000 x 4,000 mm, weight approx.: 24,000 kg



GESAN DPS 80 Power Generator

Power generator
Serial number 227799
YOM: 2008
Power: 64 kW
Working speed: 1500 Rpm
Frequency: 50 Hz
Voltage: 230-400 V
Engine: PERKINS 1104C-44TAG1
Control: DEEP SEA ELECTRONICS DSE 7320 MKII
Fuel: Diesel
Working hours according to counter: 28956 h

CE Standards

Item number: 729642, Manufacturer: GESAN, Model / Type: DPS 80, Year of manufacture: 2008, Item available from: Immediately, Item condition: unchecked, Delivery terms: FCA Porto Alto, Samora Correia, loaded on truck, Payment terms: 100% payment prior to collection, dimensions (l x w x h) approx.: 2,810 x 1,010 x 1,670 mm, weight approx.: 1,880 kg



Led Lighting Tower HIMOINSA T.ILUMN A7000

Led lighting tower
Serial number 6100778
YOM: 2006
It has 6 spotlights of 400 x 310 mm
Power 1500 W
Without generator
CE Standards

Item number: 729783, Manufacturer: HIMOINSA, Model / Type: T.ILUMN A7000, Year of manufacture: 2006, Item available from: Immediately, Item condition: unchecked, Delivery terms: FCA Porto Alto, Samora Correia, loaded on truck, Payment terms: 100% payment prior to collection, dimensions (l x w x h) approx.: 4,460 x 1,420 x 2,080 mm, weight approx.: 350 kg



GESAN DVS 150 Power Generator

Power generator
Serial number 228413
YOM: 2008
Power: 120 kW
Working speed: 1500 Rpm
Frequency: 50 Hz
Voltage: 230-400 V
Engine: VOLVO PENTA TAD 731 GE
Engine power: 163 kW
Alternator: STAMFORD UCI274F1
Control: DEEP SEA ELECTRONICS DSE 7320

Fuel: Diesel
Working hours according to counter: 25572 h
CE Standards

Item number: 729263, Manufacturer: GESAN, Model / Type: DVS 150, Year of manufacture: 2008, Item available from: Immediately, Item condition: unchecked, Delivery terms: FCA Porto Alto, Samora Correia, loaded on truck, Payment terms: 100% payment prior to collection, dimensions (l x w x h) approx.: 3,510 x 1,130 x 1,930 mm, weight approx.: 2,628 kg



GESAN DPS 80 Power Generator

Power generator
Serial number 227800
YOM: 2008
Power: 64 kW
Working speed: 1500 Rpm
Frequency: 50 Hz
Voltage: 230-400 V
Engine: PERKINS 1104C-44TAG1
Alternator: STAMFORD UC.I224G1
Control: DEEP SEA ELECTRONICS DSE 7310 MKII
Fuel: Diesel

Working hours according to counter: 21123 h
CE Standards

Item number: 729657, Manufacturer: GESAN, Model / Type: DPS 80, Year of manufacture: 2008, Item available from: Immediately, Item condition: unchecked, Delivery terms: FCA Porto Alto, Samora Correia, loaded on truck, Payment terms: 100% payment prior to collection, dimensions (l x w x h) approx.: 2,810 x 1,050 x 1,560 mm, weight approx.: 4,499 kg



CATERPILLAR 950 M Wheel Loader

Serial number CAT0950MAFTR00660

YOM: 2016

Weight 19000 Kg

Standard tires 23.5 R25

Bucket width 3 m

Standards bucket capacity 3.6 m³

Steering type: KL

Max. Speed: 39.5 km/h

Max pouring height: 2.79 m

Caterpillar engine

Engine model C7.1

Total power 186 kW

Hours of work according to meter: 9289 h

With air conditioning

CE Standards

Item number: 737415, Manufacturer: CATERPILLAR, Model / Type: 950 M, Year of manufacture: 2016, Item available from: immediately, Item condition: unchecked, Delivery terms: EXW Alcainça - SÃO MIGUEL DE ALCAINÇA,, ex foundation, unpackaged, Payment terms: 100% payment prior to collection, dimensions (l x w x h) approx.: 6,900 x 2,800 x 3,500 mm, weight approx.: 19,000 kg



GESAN DVS 150 Power Generator

Power generator

Serial number 228414

YOM: 2008

Power: 120 kW

Working speed: 1500 Rpm

Frequency: 50 Hz

Voltage: 230-400 V

Engine: VOLVO PENTA TAD 731 GE

Engine power: 163 kW

Alternator: STAMFORD UCI274F16

Control: DEEP SEA ELECTRONICS DSE 7320

Fuel: Diesel

Working hours according to counter: 19374 h

CE Standards

Item number: 729267, Manufacturer: GESAN, Model / Type: DVS 150, Year of manufacture: 2008, Item available from: Immediately, Item condition: unchecked, Delivery terms: FCA Porto Alto, Samora Correia, loaded on truck, Payment terms: 100% payment prior to collection, dimensions (l x w x h) approx.: 3,530 x 1,140 x 1,840 mm, weight approx.: 2,628 kg



LIEBHERR LTM 1030/2 Mobile Crane

Serial number 050415

Registration number: 13 MP 76

YOM: 2001

Telescopic boom: 30,000 mm

Drive engine power: 205 kW

Tires: 445/95R25

Mileage: 112.736 km

Crane running hours: 24.107 h

Max. load capacity: 35 Tn

Diesel

Drive/Steering standard: 4 x 4 x 4

Number of axles: 2

Driving speed: 85 km/h

Item number: 739373, Manufacturer: LIEBHERR, Model / Type: LTM 1030/2, Year of manufacture: 2001, Item available from: Immediately, Item condition: unchecked, Delivery terms: EXW Leiria, ex foundation, unpackaged, Payment terms: 100% payment prior to collection, dimensions (l x w x h) approx.: 1,050 x 2,500 x 3,600 mm, weight approx.: 24,000 kg



GESAN DPS 45 Power Generator

Power Generator
Serial number 227677
YOM: 2007
Power: 36,8 kW
Working speed: 1500 RPM
Frequency: 50Hz
Voltage: 400/230V
Engine: PERKINS
Control: DEEP SEA ELECTRONICS DSE 7310 MKII
Fuel: Diesel
Working hours according to counter: 19491 h
CE Standards

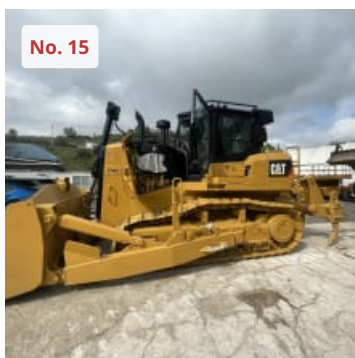
Item number: 740852, Manufacturer: GESAN, Model / Type: DPS 45, Year of manufacture: 2007, Item available from: Immediately, Item condition: unchecked, Delivery terms: FCA Porto Alto, Samora Correia, loaded on truck, Payment terms: 100% payment prior to collection, dimensions (l x w x h) approx.: 2,260 x 1,060 x 1,510 mm, weight approx.: 1,523 kg



GESAN DVS 460 Power Generator

Power generator
Serial number 228475
YOM: 2008
Power: 369.6 kW
Working speed: 1500 Rpm
Frequency: 50Hz
Voltage: 230-400V
Engine: VOLVO PENTA TAD 1640GE
Engine power: 440 kW
Alternator: STAMFORD HC.I534C1
Control: DEEP SEA ELECTRONICS DSE 7320
Fuel: Diesel
Working hours according to counter: 18072 h
CE Standards

Item number: 729667, Manufacturer: GESAN, Model / Type: DVS 460, Year of manufacture: 2008, Item available from: Immediately, Item condition: unchecked, Delivery terms: FCA Porto Alto, Samora Correia, loaded on truck, Payment terms: 100% payment prior to collection, dimensions (l x w x h) approx.: 5,530 x 1,580 x 2,420 mm, weight approx.: 6,377 kg



CATERPILLAR D7E Bulldozer

Serial number: CAT00D7ELHKA00504
YOM: 2017
Weight 27,351 Kg
Blade type: SU
Blade width 3713 mm
Ground pressure 0.69 kg/cm²
3 tooth ripper
Maximum penetration: 650mm
Track width: 660 mm
Top speed: 10.5km/h
Caterpillar engine
Engine Model: C9.3 Acert
Total power: 198 kW
Displacement 9.3 L
Fuel tank: 409 L
Working hours according to the counter: 4643 h

With rear view camera
With air conditioning
CE Standards

Transport dimensions: 4610 x 2880 x 3360 mm

Item number: 737396, Manufacturer: CATERPILLAR, Model / Type: D7E, Year of manufacture: 2017,
Item available from: immediate, Item condition: unchecked, Delivery terms: EXW Alcainça - SÃO
MIGUEL DE ALCAINÇA,, ex foundation, unpackaged, Payment terms: 100% payment prior to
collection, dimensions (l x w x h) approx.: 4,610 x 2,880 x 3,360 mm, weight approx.: 27,351 kg



HAULOTTE HA12CJ Articulated Boom Lift

Articulated boom lift
Serial number AE 107338
YOM: 2010
Maximum load capacity: 250 kg
Maximum load capacity: 2 p. + 90 kg
Maximum working height: 11.7 m
Maximum platform height: 9.7 m
Maximum horizontal range: 6.44 m
Platform rotation capacity: 355°
Maximum forward speed: 6 km/h
Maximum inclination: 3°

Maximum wind speed: 12.5 m/s
Gradeability: 25%
Lateral force: 400 N
Tires: 600 x 190
Working hours according to counter: 675 h

battery: 48 V
CE Standards

Item number: 730990, Manufacturer: HAULOTTE, Model / Type: HA12CJ, Year of manufacture:
2010, Item available from: Immediately, Item condition: unchecked, Delivery terms: FCA Porto Alto,
Samora Correia, loaded on truck, Payment terms: 100% payment prior to collection, dimensions (l x
w x h) approx.: 5,800 x 1,200 x 2,100 mm, weight approx.: 6,970 kg

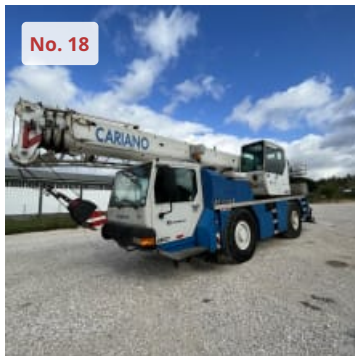


GESAN DVS 150 Power Generator

Power generator
Serial number 209964
YOM: 2007
Power: 120 kW
Working speed: 1500 Rpm
Frequency: 50 Hz
Voltage: 230-400 V
Engine: VOLVO PENTA TAD 731 GE
Engine power: 163 kW
Alternator: STAMFORD UC.I274F1
Control: DEEP SEA ELECTRONICS DSE 7320 MKII

Fuel: Diesel
Working hours according to counter: 28023 h
CE Standards

Item number: 729236, Manufacturer: GESAN, Model / Type: DVS 150, Year of manufacture: 2007,
Item available from: Immediately, Item condition: unchecked, Delivery terms: FCA Porto Alto,
Samora Correia, loaded on truck, Payment terms: 100% payment prior to collection, dimensions (l x
w x h) approx.: 3,510 x 1,120 x 1,920 mm, weight approx.: 2,628 kg



LIEBHERR LTM 1030/2 Mobile Crane

Serial number 050.448
Registration number: 13 MP 81
YOM: 2001
Telescopic boom: 30,000 mm
Drive engine power: 205 kW
Tires: 445/95R25
Mileage: 115,261 km
Crane running hours: 14,599 h
Max. load capacity: 35 Tn
Diesel
Drive/Steering standard: 4 x 4 x 4

Number of axles: 2
Driving speed: 85 km/h

Item number: 739333, Manufacturer: LIEBHERR, Model / Type: LTM 1030/2, Year of manufacture: 2001, Item available from: Immediately, Item condition: unchecked, Delivery terms: EXW Leiria, ex foundation, unpackaged, Payment terms: 100% payment prior to collection, dimensions (l x w x h) approx.: 1,050 x 2,500 x 3,600 mm, weight approx.: 24,000 kg



GESAN DPS 30 Power Generator

Power Generator
Serial number 229264
YOM: 2007
Power: 24 kW
Working speed: 1500 Rpm
Frequency: 50 Hz
Voltage: 400/230 V
Engine: PERKINS
Alternator: STAMFORD BCI.184G1
Control: DEEP SEA ELECTRONICS DSE 7310 MKII
Fuel: Diesel

Working hours according to counter: 11881 h
CE Standards

Item number: 740858, Manufacturer: GESAN, Model / Type: DPS 30, Year of manufacture: 2007, Item available from: Immediately, Item condition: unchecked, Delivery terms: FCA Porto Alto, Samora Correia, loaded on truck, Payment terms: 100% payment prior to collection, dimensions (l x w x h) approx.: 2,270 x 1,060 x 1,520 mm, weight approx.: 4,499 kg



GESAN DVS 140 Power Generator

Power Generator
Serial number 212406
YOM: 2007
Power: 101,6 kW
Working speed: 1500 RPM
Frequency: 50Hz
Voltage: 400/230V
Engine: VOLVO PENTA TAD 730 GE
Motor power: 136 kW
Alternator: STAMFORD UC.I274E1
Control: DEEP SEA ELECTRONICS DSE 7310 MKII

Fuel: Diesel
Working hours according to counter: 17511 h
CE Standards

Item number: 740855, Manufacturer: GESAN, Model / Type: DVS 140, Year of manufacture: 2007, Item available from: Immediately, Item condition: unchecked, Delivery terms: FCA Porto Alto, Samora Correia, loaded on truck, Payment terms: 100% payment prior to collection, dimensions (l x w x h) approx.: 3,520 x 1,110 x 1,760 mm, weight approx.: 2,595 kg



JCB VIBROMAX VMT 260 Tandem Roller

Tandem roller
Serial number JCB 17 007 83
YOM: 2007
Roller width: 1200 mm
Roller diameter: 700 mm
Power: 23.5 kW
Engine: KUBOTA D1503-EU4
Fuel: Diesel
Operational load: 2700 kg
Linear load: 11,2 kg/cm
Centrifugal force (in each cylinder): 26 - 45 kN

Turning radius (inside): 2100 mm
Allowable longitudinal slope (with vibration): 30%
Allowable longitudinal slope (without vibration): 40%
Working speed: 0-11 km/h
Working hours according to counter: 503 h

CE Standards

Item number: 740861, Manufacturer: JCB VIBROMAX, Model / Type: VMT 260, Year of manufacture: 2007, Item available from: Immediately, Item condition: unchecked, Delivery terms: FCA Porto Alto, Samora Correia, loaded on truck, Payment terms: 100% payment prior to collection, dimensions (l x w x h) approx.: 2,450 x 1,680 x 2,540 mm, weight approx.: 2,700 kg



GESAN DPS 80 Power Generator

Power Generator
Serial number 227680
YOM: 2008
Power: 64 kW
Working speed: 1500 Rpm
Frequency: 50 Hz
Voltage: 400/230 V
Engine: PERKINS
Alternator: STAMFORD UC.I224G1
Control: DEEP SEA ELECTRONICS DSE 7310 MKII
Fuel: Diesel

Working hours according to counter: 31028 h
CE Standards

Item number: 740857, Manufacturer: GESAN, Model / Type: DPS 80, Year of manufacture: 2008, Item available from: Immediately, Item condition: unchecked, Delivery terms: FCA Porto Alto, Samora Correia, loaded on truck, Payment terms: 100% payment prior to collection, dimensions (l x w x h) approx.: 2,810 x 980 x 1,510 mm, weight approx.: 1,880 kg



GESAN DPS 20 Power Generator

Power Generator
Serial number 227791
YOM: 2008
Power: 16,3 kW
Working speed: 1500 Rpm
Frequency: 50 Hz
Voltage: 400/230 V
Engine: PERKINS
Control: DEEP SEA ELECTRONICS DSE 7310 MKII
Fuel: Diesel
Working hours according to counter: 14775 h

CE Standards

Item number: 740859, Manufacturer: GESAN, Model / Type: DPS 20, Year of manufacture: 2008, Item available from: Immediately, Item condition: unchecked, Delivery terms: FCA Porto Alto, Samora Correia, loaded on truck, Payment terms: 100% payment prior to collection, dimensions (l x w x h) approx.: 1,870 x 840 x 1,230 mm, weight approx.: 900 kg



GENIE S-65 Articulated Boom Lift

Articulated boom lift
Serial number S6010-20492
YOM: 2010
Maximum load capacity: 227 kg
Maximum load capacity: 2 p. + 70 kg
Maximum working height: 21.6 m
Maximum platform height: 19.8 m
Maximum horizontal range: 17.1 m
Platform rotation capacity: 160°
Maximum forward speed: 6.4 km/h
Maximum inclination: 2.5°

Maximum wind speed: 12.5 m/s
Maximum lateral gradeability: 25%
Gradeability: 45%
Engine: DEUTZ D2011-L03
Power: 36 kW

Tires: 355/55D 625 NHS
Working hours according to counter: 5101 h
CE Standards

Item number: 730989, Manufacturer: GENIE, Model / Type: S-65, Year of manufacture: 2010, Item available from: Immediately, Item condition: unchecked, Delivery terms: FCA Porto Alto, Samora Correia, loaded on truck, Payment terms: 100% payment prior to collection, dimensions (l x w x h) approx.: 9,000 x 2,550 x 2,840 mm, weight approx.: 10,100 kg



GESAN DPS 20 Power Generator

Power Generator
Serial number 227790
YOM: 2008
Power: 16,3 kW
Working speed: 1500 Rpm
Frequency: 50 Hz
Voltage: 400/230 V
Engine: PERKINS
Control: DEEP SEA ELECTRONICS DSE 7210
Fuel: Diesel
Working hours according to counter: 16935 h

CE Standards

Item number: 740856, Manufacturer: GESAN, Model / Type: DPS 20, Year of manufacture: 2008, Item available from: Immediately, Item condition: unchecked, Delivery terms: FCA Porto Alto, Samora Correia, loaded on truck, Payment terms: 100% payment prior to collection, dimensions (l x w x h) approx.: 1,880 x 840 x 1,230 mm, weight approx.: 900 kg



GENIE Z-45/25 J Articulated Boom Lift

Articulated boom lift
Serial number Z452511A - 40866
YOM: 2011
Maximum load capacity: 227 kg
Maximum load capacity: 2 p
Maximum working height: 15.9 m
Maximum platform height: 13.94 m
Maximum platform length: 7.65 m
Base rotation: 355°
Platform rotation capacity: 160°
Maximum forward speed: 4.8 km/h
Maximum inclination: 2.5°
Maximum wind speed: 12.5 m/s
Gradeability: 30%
Lateral force: 400 N
Tires: 9-14.5 LT

Working hours according to counter: 2448 h
Battery: 8 x 6 V
Power: 3.9 kW
CE Standards

Item number: 740862, Manufacturer: GENIE, Model / Type: Z-45/25 J, Year of manufacture: 2011, Item available from: Immediately, Item condition: unchecked, Delivery terms: FCA Porto Alto, Samora Correia, loaded on truck, Payment terms: 100% payment prior to collection, dimensions (l x w x h) approx.: 1,790 x 2,000 x 7,400 mm, weight approx.: 7,400 kg



GESAN DPS 20 Power Generator

Power Generator
Serial number 228746
YOM: 2008
Power: 16,3 kW
Working speed: 1500 Rpm
Frequency: 50 Hz
Voltage: 400/230 V
Engine: PERKINS
Control: DEEP SEA ELECTRONICS DSE 7310 MKII
Fuel: Diesel
Working hours according to counter: 14141 h
CE Standards

Item number: 740860, Manufacturer: GESAN, Model / Type: DPS 20, Year of manufacture: 2008, Item available from: Immediately, Item condition: unchecked, Delivery terms: FCA Porto Alto, Samora Correia, loaded on truck, Payment terms: 100% payment prior to collection, dimensions (l x w x h) approx.: 1,870 x 840 x 1,220 mm, weight approx.: 867 kg



GESAN DPS 20 Power Generator

Power Generator
Serial number 227792
YOM: 2008
Power: 16,3 kW
Working speed: 1500 Rpm
Frequency: 50 Hz
Voltage: 400/230 V
Engine: PERKINS
Control: DEEP SEA ELECTRONICS DSE 7210
Fuel: Diesel
Working hours according to counter: 14587 h

Item number: 740854, Manufacturer: GESAN, Model / Type: DPS 20, Year of manufacture: 2008, Item available from: Immediately, Item condition: unchecked, Delivery terms: FCA Porto Alto, Samora Correia, loaded on truck, Payment terms: 100% payment prior to collection, dimensions (l x w x h) approx.: 1,870 x 840 x 1,220 mm, weight approx.: 867 kg



HYUNDAI HL 770-9 Wheel Loader

Serial number HHIHLK01PC0000232

YOM: 2012

Weight 23100 Kg

Standard tires 26.5 R25

Bucket width 3.1 m

Standards bucket capacity 4.2 m³

Steering type: KL

Max. Speed: 41 km/h

Max pouring height: 3.1 m

Lifting power: 172.85 kN

Cummins engine

Engine model QSL8.9

Total power 207 kW

Rev.: 2000 Rpm

Hours of work according to meter: 9576,9 h

With air conditioning

Item number: 737417, Manufacturer: HYUNDAI, Model / Type: HL 770-9, Year of manufacture: 2012, Item available from: immediate, Item condition: unchecked, Delivery terms: EXW Alcainça - SÃO MIGUEL DE ALCAINÇA,, ex foundation, unpackaged, Payment terms: 100% payment prior to collection, dimensions (l x w x h) approx.: 8,600 x 3,100 x 3,600 mm, weight approx.: 23,100 kg