

Auction Catalogue

Surplex Metalworking Auction (Portugal)

The items are in different locations (see item description)

Viewing by appointment only!
For the inspection, please contact to Pedro Carrico:
pedro.carrico@surplex.com

71 lots

Bidding ends:

Thursday, 07/04/2022, 11:00(local time)

Bids are welcome immediately and can be placed at:

Contact:

Agustin Fernandez
+34 936 393 895
agustin.fernandez@surplex.com
www.surplex.com

Viewing:

The items are in different locations (see item description)

Viewing by appointment only!
For the inspection, please contact to Pedro Carrico:
pedro.carrico@surplex.com
Monday, **04/04/2022**, from 09:00 to 17:00

Description:

Metalworking Auction, different locations

Important:

1. The item list is being continuously updated - please check back regularly!
2. In most cases, several items are located at one place - please sort list by "location"!



DR. HEINR. SCHNEIDER GMBH & CO ST 750 Amplifier Profile Projector

Horizontal Measuring Projector
Serial number 015095
750mm Projection Screen
Goniometer 360° Pivotable

Item number: 731524, Manufacturer: DR. HEINR. SCHNEIDER GMBH & CO, Model / Type: ST 750, Year of manufacture: 1990, Item available from: Immediately, Item condition: unchecked, Delivery terms: FCA Trofa, loaded on truck, Payment terms: 100% payment prior to collection, dimensions (l x w x h) approx.: 3,000 x 2,200 x 2,200 mm, weight approx.: 1,200 kg



JONES-SHIPMAN 1076 Cylindrical Grinder

Universal Cylindrical Grinder
Serial number B0 95488

Item number: 731559, Manufacturer: JONES & SHIPMAN, Model / Type: 1076, Item available from: Immediately, Item condition: unchecked, Delivery terms: FCA Trofa, loaded on truck, Payment terms: 100% payment prior to collection, weight approx.: 2,000 kg, dimensions (l x w x h) approx.: 2,500 x 1,500 x 1,900 mm



GRIFO Grinding Machine

Universal profile grinder

Item number: 731577, Manufacturer: GRIFO, Item available from: Immediately, Item condition: unchecked, Delivery terms: FCA Trofa, loaded on truck, Payment terms: 100% payment prior to collection, dimensions (l x w x h) approx.: 1,100 x 1,100 x 1,700 mm, weight approx.: 400 kg



NIKON V12-A Profile Projector

NIKON V12-A Profile Projector

Item number: 731556, Manufacturer: NIKON, Model / Type: V12-A, Item available from: Immediately, Item condition: unchecked, Delivery terms: FCA Trofa, loaded on truck, Payment terms: 100% payment prior to collection, dimensions (l x w x h) approx.: 1,200 x 600 x 900 mm, weight approx.: 100 kg



ELBO CONTROLLI AR 1000 Pre-Setting Tool Machine

Optical projector.
Measuring range: X axis = 125mm (Ø 250mm) - Z axis= 350mm.
ISO50 spindle.

Item number: 731579, Manufacturer: ELBO CONTROLLI, Model / Type: AR 1000, Year of manufacture: 1997, Item available from: Immediately, Item condition: unchecked, Delivery terms: FCA Trofa, loaded on truck, Payment terms: 100% payment prior to collection, dimensions (l x w x h) approx.: 800 x 600 x 1,000 mm, weight approx.: 85 kg



WALTER HMC 500 CNC Machining Centre

CNC Machining center
Serial number 7754
Axis Motions (X/Y/Z): 350/200/460mm
C-Axis (Rotary Table) Swiveling Range & Speed: +/- 200 Degrees / 120-Degrees Per Second
A-Axis Length: 150mm
A-Axis Rotation: Infinite
A-Axis Center Height (With/Without Work Table): 130/160mm
Max Diameter of Workpiece: 100mm
Max Length of Workpiece (Peripheral / Face Grinding): 300/190mm
Linear / Radial Resolution: .0001 mm / .0001 Degree
Grinding Spindle Diameter: 70 mm

Max Grinding Wheel Diameter: 150 mm
Grinding Wheel Speeds: 0-9.500 Rpm
Workhead Spindle Taper: ISO 50
Control: Walter HMC 500 WWM
Connection: 460 Volt, 3-Phase

Computer needs to be checked, doesn't start.

Item number: 731550, Manufacturer: WALTER, Model / Type: HMC 500 Helitronic Minipower, Year of manufacture: 1999, Item available from: Immediately, Item condition: unchecked, Delivery terms: FCA Trofa, loaded on truck, Payment terms: 100% payment prior to collection, x-motion: 350 mm, y-motion: 200 mm, z-motion: 460 mm, control: Walter HMC 500 WWM Control, weight approx.: 3,200 kg, dimensions (l x w x h) approx.: 3,200 x 2,200 x 1,900 mm



KELLENBERGER KEL-VISTA CNC Lathe

CNC Lathe
Distance between points: 600 mm
Working height: 175 mm
Max. grinding length: 600 mm
Power requirement: 13 KW
Control: CNC FANUC 21 IT
KELLENBERGER KEL VISTA UR 175-1000 CNC

Needs to be checked!!

Item number: 731557, Manufacturer: KELLENBERGER, Model / Type: KEL-VISTA, Year of manufacture: 2002, Item available from: Immediately, Item condition: unchecked, Delivery terms: FCA Trofa, loaded on truck, Payment terms: 100% payment prior to collection, control: Fanuc 21i-T, weight approx.: 3,000 kg, dimensions (l x w x h) approx.: 4,200 x 3,000 x 2,300 mm



KELLENBERGER R125 X 600 Cylindrical Grinding Machine

Serial number: 31.207.028
Hydraulic system leakage!

Item number: 731545, Manufacturer: KELLENBERGER, Model / Type: R125 X 600, Year of manufacture: 1996, Item available from: Immediately, Item condition: unchecked, Delivery terms: FCA Trofa, loaded on truck, Payment terms: 100% payment prior to collection, control: MC MESELTRON TYPE MOV 4410 A, weight approx.: 2,000 kg, dimensions (l x w x h) approx.: 3,200 x 2,000 x 2,000 mm



DMG DECKEL DMU70 CNC Milling Machine

CNC Milling Machine
 Serial number: 15435713234
 X-axis travel: 750 mm
 Y-axis travel: 600 mm
 Z-axis travel: 520 mm
 Total power requirement: 25 kVA
 Spindle lock: SK 40
 Max. workpiece weight: 350 kg
 Spindle drive: 14/18,9 kW
 Feed rate: 10 m/min
 B-axis (table): -10 / +95 °
 Face plate: 700 x 500 mm
 C-axis: 360 °
 Working hours according to the counter: 58514

Item number: 731521, Manufacturer: DMG DECKEL, Model / Type: DMU70, Year of manufacture: 2007, Item available from: Immediately, Item condition: unchecked, Delivery terms: FCA Trofa, loaded on truck, Payment terms: 100% payment prior to collection, x-motion: 750 mm, y-motion: 600 mm, z-motion: 520 mm, control: Heidenhain iTNC 530, workpiece weight: 350 kg, weight approx.: 7,500 kg, dimensions (l x w x h) approx.: 6,600 x 5,600 x 2,700 mm



DMG SAUER LASERTEC 20 5-Axis CNC Laser Grinding Machine

5-axis laser processing machine LASERTEC 20 linear
 Serial number 1185 000099 7
 Number of axes: 5-axis
 Spindle orientation: universal
 Applications: CBN
 High-precision, laser, EDM
 X travel: Min.: 0 mm (0 in) Max.: 200 mm
 Y travel: Min.: 0 mm (0 in) Max.: 400 mm
 Z travel: Min.: 0 mm (0 in) Max.: 280 mm
 Working hours according to the counter: 41650 h

HIGHLIGHTS

- + Highly dynamic 5-axis precision machine in gantry design with 5 µm positioning accuracy
- + Compact footprint of only 3.5m²
- + Integrated swiveling rotary table (4th /5th axis in standard version) with torque technology, -15°/+130°
- + Precision cooling on all axes
- + Maximum workpiece size: ø200 x344 mm (restrictions depending on the A-axis positioning)
- + CELOS with SIEMENS 840D solutionline
- + Noncontact precision machining with no tool wear
- + LASERSOFT software package for laser machining of indexable cutting inserts, turning tools, shaft and HSK tools
- + Incorporation of cutting capacity levels

Contact-free machining without need of electrodes and without tool wear
 Chip free cutting edges, relief angles and chip breakers in PCD, CVD-D and CBN
 Longer tool life up to factor 2,5 due to laser machining
 Highly dynamic 5-axis separation of cutting inserts out of blanks (Version PreCut)
 Separation is up to 10x faster than conventional wire EDM (version PreCut)

Highly dynamic through linear drives in the X-, Y-, Z-axis with > 2 g
 Precision cooling in all axis

CE Standards

Item number: 731542, Manufacturer: DMG SAUER, Model / Type: LASERTEC 20 - 5 AXIS, Year of manufacture: 2015, Item available from: Immediately, Item condition: unchecked, Delivery terms: FCA Trofa, loaded on truck, Payment terms: 100% payment prior to collection, x-motion: 200 mm, y-motion: 400 mm, z-motion: 280 mm, control: ERGOline, weight approx.: 3,600 kg, dimensions (l x w x h) approx.: 2,200 x 2,100 x 2,400 mm



ELITE 70 Tool Grinding Machine

Universal tool grinder Elite 70
Serial number 538
Motor power: 1 HP- 2800 Rpm

Item number: 731586, Manufacturer: ELITE, Model / Type: 70, Item available from: Immediately, Item condition: unchecked, Delivery terms: FCA Trofa, loaded on truck, Payment terms: 100% payment prior to collection, dimensions (l x w x h) approx.: 1,500 x 1,300 x 1,800 mm, weight approx.: 450 kg



HYDROVANE 37 Compressor

Max flowrate: 1 m³/min (at 10 bar)
Power: 7,5 kW
Working hours according to the counter: 27125 h

Item number: 731593, Manufacturer: HYDROVANE, Model / Type: 37, Year of manufacture: 1991, Item available from: Immediately, Item condition: unchecked, Delivery terms: FCA Trofa, loaded on truck, Payment terms: 100% payment prior to collection, dimensions (l x w x h) approx.: 800 x 900 x 1,200 mm, weight approx.: 90 kg



DCE UNIMAST3ER UMA 40 Dust Filter

Dust collector
Serial number 208965
Total power: 0.55 kW

Item number: 731595, Manufacturer: DCE UNIMAST3ER, Model / Type: UMA 40, Item available from: Immediately, Item condition: unchecked, Delivery terms: FCA Trofa, loaded on truck, Payment terms: 100% payment prior to collection, dimensions (l x w x h) approx.: 700 x 800 x 1,600 mm, weight approx.: 100 kg

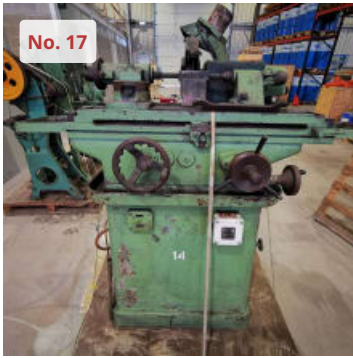


POKOLM FRASTECHNIK TSI 3510 Induction Shrink Machine

Fast shrinking processes for solid carbide tools in adequate tool holders
Main voltage: 230 V, 50 / 60 Hz, 16 A
Protection: IP 40
Max. arbor diameter: 45 mm
Max. heating zone: 40 mm
Max. operation time: 30 sec
Pre-adjustment timer: 0 - 30 sec
TSI 3510
Concentricity up to 0.003 mm
Safe load transmission
Extremely high torque

High balance quality
Power: 3,5 kW

Item number: 731555, Manufacturer: POKOLM FRASTECHNIK, Model / Type: TSI 3510, Item available from: Immediately, Item condition: unchecked, Delivery terms: FCA Trofa, loaded on truck, Payment terms: 100% payment prior to collection, dimensions (l x w x h) approx.: 500 x 450 x 200 mm, weight approx.: 40 kg



Grinding Machine

Item number: 731594, Item available from: Immediately, Item condition: unchecked, Delivery terms: FCA Trofa, loaded on truck, Payment terms: 100% payment prior to collection, dimensions (l x w x h) approx.: 1,200 x 1,000 x 1,600 mm, weight approx.: 550 kg



Automatic Cutting Machine

Total power: 1.75 kW

Item number: 731540, Year of manufacture: 2012, Item available from: Immediately, Item condition: unchecked, Delivery terms: FCA Trofa, loaded on truck, Payment terms: 100% payment prior to collection, dimensions (l x w x h) approx.: 1,400 x 1,300 x 2,200 mm, weight approx.: 350 kg



MICHEAL WEINING AG RONDAMAT R 960 Tool Grinding Machine

Tool grinding machine
Serial number 90448
Max. tool width approx. 240 mm
Tool from 100 up to 300 mm
Grinding disc diameter: 150 to 225 mm
CE Standards

Item number: 731551, Manufacturer: MICHEAL WEINING AG, Model / Type: RONDAMAT R 960, Year of manufacture: 2000, Item available from: Immediately, Item condition: unchecked, Delivery terms: FCA Trofa, loaded on truck, Payment terms: 100% payment prior to collection, weight approx.: 900 kg, dimensions (l x w x h) approx.: 1,200 x 1,300 x 1,800 mm



HITEMA - KELVIN - SEIFERT KUR42.10.AAC Chiller, Electric Cabinet and Air Conditioner

Spindle cooler with electrical cabinet and air conditioning unit
Brands: HITEMA / KELVIN / SEIFERT

Item number: 731553, Manufacturer: HITEMA - KELVIN - SEIFERT, Model / Type: KUR42.10.AAC, Year of manufacture: 1998, Item available from: Immediately, Item condition: unchecked, Delivery terms: FCA Trofa, loaded on truck, Payment terms: 100% payment prior to collection, dimensions (l x w x h) approx.: 1,200 x 1,000 x 1,400 mm, weight approx.: 120 kg



AKE KNEBEL F3 Sawblade Grinding Machine

Sawblade grinding machine
Partially disassembled
Need to be repaired !!

Item number: 731558, Manufacturer: AKE KNEBEL, Model / Type: F3, Year of manufacture: 1999, Item available from: Immediately, Item condition: unchecked, Delivery terms: FCA Trofa, loaded on truck, Payment terms: 100% payment prior to collection, dimensions (l x w x h) approx.: 1,100 x 1,600 x 1,700 mm, weight approx.: 800 kg



GILDEMASTER DEVLIEG EGW - 2530 Presetting Device

Serial number: 65-10-324
Partially disassembled

Item number: 731581, Manufacturer: GILDEMASTER DEVLIEG, Model / Type: EGW - 2530, Year of manufacture: 1994, Item available from: Immediately, Item condition: unchecked, Delivery terms: FCA Trofa, loaded on truck, Payment terms: 100% payment prior to collection, dimensions (l x w x h) approx.: 1,300 x 1,000 x 1,800 mm, weight approx.: 400 kg



EQUIULTRA Automatic Ultrasonic Cleaning Line

Machine without ultrasonic generator
With 3 tanks

Item number: 731583, Manufacturer: EQUIULTRA, Item available from: Immediately, Item condition: unchecked, Delivery terms: FCA Trofa, loaded on truck, Payment terms: 100% payment prior to collection, dimensions (l x w x h) approx.: 4,500 x 1,600 x 3,200 mm, weight approx.: 1,000 kg



SIEMENS - TUMETIC 4HB5699-4ZA Distribution Transformer

Siemens 3 phase transformer
Serial number 91609
400 kVA
15 kV/0,4 kV

CEI 60076 Standards

Hermetically sealed distribution transformers completely filled with oil as cooling and insulating medium

Item number: 731533, Manufacturer: SIEMENS - TUMETIC, Model / Type: 4HB5699-4ZA, Year of manufacture: 2002, Item available from: Immediately, Item condition: unchecked, Delivery terms: FCA Trofa, loaded on truck, Payment terms: 100% payment prior to collection, dimensions (l x w x h) approx.: 2,200 x 1,200 x 1,400 mm, weight approx.: 350 kg



DMG SAUER LASERTEC 20 5-Axis CNC Laser Grinding Machine

5-axis laser processing machine LASERTEC 20

Serial number 1185 000035 7

Number of axes: 5-axis

Spindle orientation: universal

Applications: CBN

High-precision, laser, EDM

X travel: Min.: 0 mm (0 in) Max.: 200 mm

Y travel: Min.: 0 mm (0 in) Max.: 400 mm

Z travel: Min.: 0 mm (0 in) Max.: 280 mm

Working hours according to the counter: 52678 h

HIGHLIGHTS

+ Highly dynamic 5-axis precision machine in gantry design with 5 µm positioning accuracy

+ Compact footprint of only 3.5m²

+ Integrated swiveling rotary table (4th /5th axis in standard version) with torque

technology, -15°/+130°

+ Precision cooling on all axes

+ Maximum workpiece size: ø200 x 344 mm (restrictions depending on the A-axis positioning)

+ CELOS with SIEMENS 840D solutionline

- + Noncontact precision machining with no tool wear
- + LASERSOFT software package for laser machining of indexable cutting inserts, turning tools, shaft and HSK tools
- + Incorporation of cutting capacity levels

Contact-free machining without need of electrodes and without tool wear
 Chip free cutting edges, relief angles and chip breakers in PCD, CVD-D and CBN
 Longer tool life up to factor 2,5 due to laser machining
 Highly dynamic 5-axis separation of cutting inserts out of blanks (Version PreCut)
 Separation is up to 10x faster than conventional wire EDM (version PreCut)

Highly dynamic through linear drives in the X-, Y-, Z-axis with > 2 g
 Precision cooling in all axis

CE Standards

Item number: 731528, Manufacturer: DMG SAUER, Model / Type: LASERTEC 20 - 5 AXIS, Year of manufacture: 2013, Item available from: Immediately, Item condition: unchecked, Delivery terms: FCA Trofa, loaded on truck, Payment terms: 100% payment prior to collection, x-motion: 200 mm, y-motion: 400 mm, z-motion: 280 mm, control: ERGOline, weight approx.: 3,600 kg, dimensions (l x w x h) approx.: 2,200 x 2,100 x 2,400 mm



MOTOFIL 2 POS.ESQ Robotic Welding Station

FANUC ROBOT ARC Mate 100iC 6l series
 Serial number: 6411
 With MIG/MAG Welding Torch System ABIROB W (liquid-cooled)
 KEMPPi KempArc Modular PULSE 450 MIG/MAG welding systems for automation
 Working hours according to the counter: 785 hours
 Power: 25 kVA

Item number: 731669, Manufacturer: MOTOFIL, Model / Type: 2 POS.ESQ, Year of manufacture: 2016, Item available from: Immediately, Item condition: unchecked, Delivery terms: FCA Fermentões - Guimarães, loaded on truck, Payment terms: 100% payment prior to collection, dimensions (l x w x h) approx.: 7,500 x 6,000 x 5,000 mm, weight approx.: 7,060 kg



MOTOFIL ESR02B Robotic Welding Station

FANUC ROBOT ARC Mate 120iC 10L series
 With MIG/MAG Welding Torch System ABIROB W (liquid-cooled)
 KempArc Modular MIG/MAG welding systems for automation
 With 7th axis. FANUC robot
 Rotator of pieces up to 5000 x 1600 mm.
 Max workpiece weight: 1000 Kg.
 Working hours according to the counter: 830 hours
 Input power: 25 Kva
 Supply frequency: 50/60 Hz
 Voltage: 24 DC

Item number: 731668, Manufacturer: MOTOFIL, Model / Type: ESR02B, Year of manufacture: 2016, Item available from: Immediately, Item condition: unchecked, Delivery terms: FCA Fermentões - Guimarães, loaded on truck, Payment terms: 100% payment prior to collection, dimensions (l x w x h) approx.: 5,000 x 3,000 x 2,500 mm, weight approx.: 6,000 kg



TORNOS DECO SIGMA 20S Lathe

SERIAL NUMBER: 6890
 - Number of axes : 8
 - Number of spindles : 2

 MAIN SPINDLE
 - Max. bar diameter : 25.4 mm
 - Travel : 230 mm
 - Spindle speeds : 10000 Rpm
 - Spindle power : 5.5 kW
 - C axis indexing precision : 0.1°

COUNTER-SPINDLE

- Max. bar diameter : 25.4 mm
- Spindle speeds : 10000 Rpm
- Spindle power : 5.5 kW
- C axis indexing precision : 0.1°
- Number of guide bush holders : 1

Side 1

- Number of positions : 10
- Number of motorized positions : 4
- Live tools speed : 10000 Rpm

Side 2

- Number of positions : 10
- Number of motorized Q4positions : 3
- Live tools speed : 10000 Rpm

END ATTACHMENT

- Number of positions : 4

SECONDARY OPERATION

- Number of positions : 2

POWER SUPPLY

- Supply voltage : 400 V
- Total installed power : 14 kW

WEIGHT & DIMENSIONS

- Machine floor space : 2500/1400 mm
- Machine height : 2050 mm
- Machine weight : 3500 kg

MACHINE HOURS

- Number of hours under power : 40870 h
- CONTROL: Fanuc 31i
- Rotating guide bush
- Parts catcher
- Parts conveying strip
- Ejection of workpiece
- Coolant tank (with cooling unit)
- Bar loader : ROBOT BAR - SBF-532 - SERIAL NUMER 6891
- Number of turning tool holders : 5
- Number of fixed tool holders : 5
- Number of Driven tools : 3

Item number: 733996, Manufacturer: TORNOS, Model / Type: DECO SIGMA 20S, Year of manufacture: 2006, Item available from: Immediately, Item condition: unchecked, Delivery terms: FCA Albergaria A Velha, loaded on truck, Payment terms: 100% payment prior to collection, dimensions (l x w x h) approx.: 11,000 x 2,400 x 3,700 mm, weight approx.: 4,000 kg



TORNOS-BECHLER DECO 2000/20 CNC Lathe

- Serial number: T 62013
- Bar passage: 26 mm (32 mm)
- Length of part in one feed. 240 mm
- Spindle speed. 0-8000 Rpm
- Max. spindle power: 7,5 kW
- Max. number of tools at guide bush: 10
- Max. number of tools on combination attachment: 4
- Speed of counter spindle : 0-8000 rpm
- Max. number of tools in counter-operation: 7
- Max. number of axes: 10 (12 / axis C)
- Working hours according to the counter: 55164 h

Control: Fanuc PNC DECO

Automatic barfeeder: ROBOBAR SSF 226
Serial number: C-14115

NSM MAGNETTECHNIK SWARF ROTOR included

Item number: 733998, Manufacturer: TORNOS-BECHLER, Model / Type: DECO 2000/20, Year of manufacture: 1998, Item available from: Immediately, Item condition: unchecked, Delivery terms: FCA Oiã, loaded on truck, Payment terms: 100% payment prior to collection, dimensions (l x w x h) approx.: 14,000 x 3,900 x 11,300 mm, weight approx.: 15,600 kg



SCHAUBLIN 125 Lathe

Center height: 125 mm
Distance between centers: 500 mm
Max.turning diameter over cross slide: 130 mm
Max.turning diameter over the bed: 270 mm

Headstock
Spindle speeds, stepless: 340 - 3000 Rpm
With reduction gear: 68 - 3000 rpm
Spindle nose: Camlock D1 - 3 "
Pliers diameter: B 32 or B 32-UP
Forceps passage: 24 mm
Spindle bore: 28 mm

Tailstock
Spindle cone: Morse 2
Spindle travel: 100 mm

Feed gear
Longitudinal and transverse feeds: 4 - 260 mm / min
Feed motor: 0.25 kW / 4000 rpm
Connection: 50 Hz / 400 volts

Tapping gear
Metric pitches: 0.25 - 8 mm
English gradients: 112 - 3 G / 1 "

Item number: 734625, Manufacturer: SCHAUBLIN, Model / Type: 125, Item available from: Immediately, Item condition: unchecked, Delivery terms: FCA Amieira, Marinha Grande, loaded on truck, Payment terms: 100% payment prior to collection, dimensions (l x w x h) approx.: 1,480 x 730 x 1,280 mm, weight approx.: 980 kg



SHAUBLIN 13 Milling Machine

Table length 600 mm
Table width 210 mm
Longitudinal travel (X-axis) 260 mm
Transversal travel (y axis) 150 mm
Vertical travel (z axis) 310 mm
Distance from vertical spindle to table 310 mm
Distance from horizontal spindle to table 410 mm

Spindle speeds:
Stepless: from 58 up to 2000 Rpm
Taper in spindle 30 ISO

Feeds steps: 10
Longitudinal from 12.0 mm/min up to 400 mm/min
Vertical from 12.0 mm/min up to 400 mm/min

Rapid traverse:

Longitudinal 1.2 m/min
Vertical 1.2 m/min
Voltage 50 Hz 3x 380 Volt
Motor output 2.0 HP
Total power required 3.0 HP

Item number: 734621, Manufacturer: SHAUBLIN, Model / Type: 13, Year of manufacture: 1965,
Item available from: Immediately, Item condition: unchecked, Delivery terms: FCA Amieira, Marinha Grande, loaded on truck, Payment terms: 100% payment prior to collection, dimensions (l x w x h) approx.: 1,500 x 1,100 x 1,600 mm, weight approx.: 700 kg



BRIDGEPORT INTERACT SERIES 1 - MK2 Milling Machine

Serial number: 66896
Strokes (X, Y, Z): 450 x 300 x 125 mm
Table size: 860 x 315 mm
Cone: ISO30/2080
Speeds: 40 to 4,000 Rpm
Controller: Heidenhain TNC 155
With water pump and automatic lubrication

Item number: 734624, Manufacturer: BRIDGEPORT, Model / Type: INTERACT SERIES 1 - MK2, Year of manufacture: 1996, Item available from: Immediately, Item condition: unchecked, Delivery terms: FCA Amieira, Marinha Grande, loaded on truck, Payment terms: 100% payment prior to collection, dimensions (l x w x h) approx.: 1,400 x 1,400 x 2,200 mm, weight approx.: 2,000 kg



CLEAN CUT EDM 300 ZNC Die Sinking EDM Machine

Serial number: 0811718
Table size: 600 x 300 mm
X-Axis travel: 300mm
Y-Axis travel: 300mm
Z-Axis travel: 370mm
YOM: 2000
Voltage: 380 V
Frequency: 50 HZ
75 Amps

Item number: 734622, Manufacturer: CLEAN CUT, Model / Type: EDM 300 ZNC, Item available from: Immediately, Item condition: unchecked, Delivery terms: FCA Amieira, Marinha Grande, loaded on truck, Payment terms: 100% payment prior to collection, control: GROMAX ORBIT-CUT SISTEM III, weight approx.: 1,400 kg, dimensions (l x w x h) approx.: 1,700 x 1,350 x 2,100 mm



CINCINATI SABRE-750 ERH Vertical Machining Center

Controller: Acramatic 8505X
Serial Number: 7029-A00-94-0926
Travels:
X-780 mm
Y-520 mm
Z-580 mm
Made in England

Item number: 684784, Manufacturer: CINCINATI, Model / Type: SABRE-750 ERH, Year of manufacture: 1994, Item available from: immediately, Item condition: unchecked, Delivery terms: FCA Amieira, Marinha Grande, loaded on truck, Payment terms: 100% payment prior to collection, weight approx.: 4,500 kg, dimensions (l x w x h) approx.: 1,900 x 2,200 x 2,500 mm



Cargo Lifting Crane

Cargo Lifting Crane
Serial Number: 30376
Capacity: 50 T

Item number: 684789, Manufacturer: unknown, Year of manufacture: 2000, Item available from: immediately, Item condition: unchecked, Delivery terms: FCA Amieira, Marinha Grande, loaded on truck, Payment terms: 100% payment prior to collection, dimensions (l x w x h) approx.: 2,000 x 500 x 400 mm, weight approx.: 760 kg



ELB SW3HA Hydraulic, Electric and Manual Surface Grinder

Hydraulic, Electric and Manual Grinding Machine
Made in Germany
Table Dimensions: 300 x 150 mm
X: 350 mm
Y: 150 mm
Z: 200 mm
Serial Number: 37050662

Item number: 684796, Manufacturer: ELB, Model / Type: SW3HA, Year of manufacture: 1980, Item available from: immediately, Item condition: unchecked, Delivery terms: FCA Amieira, Marinha Grande, loaded on truck, Payment terms: 100% payment prior to collection, weight approx.: 700 kg, dimensions (l x w x h) approx.: 900 x 100 x 1,800 mm



BOTTARINI GB/T 650 Piston Compressor

Made in Italy
CE Certificate
11 Bar
Serial Number: 62427

Item number: 684798, Manufacturer: BOTTARINI, Model / Type: GB/T 650, Year of manufacture: 2004, Item available from: immediately, Item condition: unchecked, Delivery terms: FCA Amieira, Marinha Grande, loaded on truck, Payment terms: 100% payment prior to collection, dimensions (l x w x h) approx.: 1,300 x 400 x 550 mm, weight approx.: 38 kg



LAGUN FU2 Knee Type Milling Machine

Working Table Dimensions: 1300 mm x 280 mm
X: 600 mm
Y: 280 mm
Z: 450 mm
Angled Universal Head with Slot
Fast forward
water engine
Water tank
Low Speeds: 28 rpm to 180 rpm
High Speeds: 224 rpm to 1400 rpm
Feedrates of the Axes: 10 to 452

Item number: 684804, Manufacturer: LAGUN, Model / Type: FU2, Year of manufacture: 1989, Item available from: immediately, Item condition: unchecked, Delivery terms: FCA Amieira, Marinha Grande, loaded on truck, Payment terms: 100% payment prior to collection, weight approx.: 2,000 kg, dimensions (l x w x h) approx.: 1,700 x 1,600 x 1,775 mm



ZMM CU580 Lathe Working Face plates (x 20 units)

Lathe working plates (x 20 units) to Lathe ZMM CU 580 or similar
Diameter \varnothing : 480 mm
4 Holes
Hole to Hole: 170 mm
Larger Ring: 140 mm
Tree Hole: 85 mm
Height: 60 mm

Item number: 684805, Manufacturer: unknown, Model / Type: ZMM CU580, Item available from: immediately, Item condition: unchecked, Delivery terms: FCA Amieira, Marinha Grande, loaded on truck, Payment terms: 100% payment prior to collection, weight approx.: 300 kg, dimensions (l x w x h) approx.: 120 x 80 x 450 mm



MAS KOVOSVIT MAS MCV 750 CNC Machining Center

Control: Heidenhain 410
Working Table Dimensions: 1000mm x 500mm
X: 750 mm
Y: 500 mm
Z: 500 mm
ISO40
Tool Carousel Capacity: 20 Tools
Made in Czech Republic
CE Certificate

Item number: 684808, Manufacturer: MAS, Model / Type: KOVOSVIT MAS MCV 750, Year of manufacture: 1996, Item available from: immediately, Item condition: unchecked, Delivery terms: FCA Amieira, Marinha Grande, loaded on truck, Payment terms: 100% payment prior to collection, weight approx.: 4,000 kg, dimensions (l x w x h) approx.: 2,300 x 2,000 x 2,100 mm



GUILIN X5746-2 Universal Milling Machine

Working Table Dimensions: 2000mm x 450mm
X: 1500 mm
Y: 700 mm
Z: 480 mm
With fast and slow feeds
Maximum Speed: 2050 rpm
Low Speed: 50 rpm
Maximum Loading Table: 1000 Kg
Angular Head in both directions Huron
Cone: ISO50

Item number: 684809, Manufacturer: GUILIN, Model / Type: X5746-2, Year of manufacture: 1997, Item available from: immediately, Item condition: unchecked, Delivery terms: FCA Amieira, Marinha Grande, loaded on truck, Payment terms: 100% payment prior to collection, dimensions (l x w x h) approx.: 2,200 x 2,000 x 2,000 mm, weight approx.: 4,000 kg



MH600B Milling Table

Maho Milling Table
Working Table Dimensions: 1000 mm x 400 mm
6 Horizontal T-Slots
T-Slots of 15 mm
Hole-to-Hole Adaptation: 315 mm

Item number: 684813, Manufacturer: MAHO, Model / Type: MH600B, Item available from: immediately, Item condition: unchecked, Delivery terms: FCA Amieira, Marinha Grande, loaded on truck, Payment terms: 100% payment prior to collection, weight approx.: 100 kg, dimensions (l x w x h) approx.: 1,000 x 400 x 270 mm



HURCO BMC30/M CNC Machining Center

X: 1100 mm
Y: 500 mm
Z: 500 mm
Controller: Hurco Ultimax 3
Serial Number: 9507004A Hours of Work: 51248 h
Hurco Europe Limited

Item number: 684825, Manufacturer: HURCO, Model / Type: BMC30/M, Year of manufacture: 1994, Item available from: immediately, Item condition: unchecked, Delivery terms: FCA Amieira, Marinha Grande, loaded on truck, Payment terms: 100% payment prior to collection, weight approx.: 4,500 kg, dimensions (l x w x h) approx.: 3,100 x 2,400 x 2,300 mm



CHARMILLES ELERODA 10 Electroerosion Machine

Serial Number: 31509
Amperage: 25A
Tank size: 500 x 330 x 215 mm
Longitudinal travel (X): 200 mm
Transverse travel (Y): 125 mm
Vertical travel (Z): 230 mm
2 Axis DRO Visulesta II
Dielectric Tank , Pump, Filters and manuals

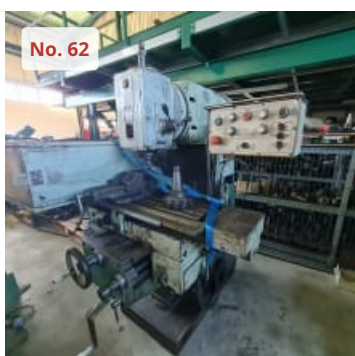
Item number: 710081, Manufacturer: CHARMILLES, Model / Type: ELERODA 10, Year of manufacture: 1998, Item available from: immediately, Item condition: unchecked, Delivery terms: FCA Amieira, Marinha Grande, loaded on truck, Payment terms: 100% payment prior to collection, weight approx.: 500 kg, dimensions (l x w x h) approx.: 1,500 x 1,000 x 1,800 mm



TOS FN32 Toolroom Mill

Table size 300 x 700 mm
Travels X / Y / Z: 500 / 285 / 430 mm
Spindle SK40
Speeds from 40 to 2000 Rpm
Feed rate 8-400 mm / min
Speed: 600 mm / min
High-speed head max 10,000 Rpm
2-axis Digital read out
Clamping vice included

Item number: 710083, Manufacturer: TOS, Model / Type: FN32, Year of manufacture: 1987, Item available from: immediately, Item condition: unchecked, Delivery terms: FCA Amieira, Marinha Grande, loaded on truck, Payment terms: 100% payment prior to collection, weight approx.: 1,850 kg, dimensions (l x w x h) approx.: 1,340 x 1,100 x 1,550 mm



UNIMILL F-20 Knee Type Milling Machine

Table size: 1370 x 295 mm
X-axis travel: 900 mm
Y-axis travel: 300 mm
Z-axis travel: 420 mm
Spindle speeds: 31.5 - 1400 Rpm
Spindle cone ISO 50
Equipped with: Head Rapid, Cooling water system, etc.

Item number: 710084, Manufacturer: UNIMILL, Model / Type: F-20, Year of manufacture: 1983, Item available from: immediately, Item condition: unchecked, Delivery terms: FCA Amieira, Marinha Grande, loaded on truck, Payment terms: 100% payment prior to collection, weight approx.: 2,250 kg, dimensions (l x w x h) approx.: 1,750 x 1,300 x 1,850 mm



CHEVALIER FM-4VKH vertical 3-Axis Milling Machine

Serial number FM90500 7
Variable speed head
Table Size: up to 254 x 1270 mm
Table Load: up to 450 kg
Spindle Speed: from 60 up to 4,000 Rpm
Spindle taper: R8 or NST30
Quill Travel: 127 mm
2-axis Newall DRO
Clamping vice included

Item number: 710086, Manufacturer: CHEVALIER, Model / Type: FM-4VKH, Year of manufacture: 2001, Item available from: immediately, Item condition: unchecked, Delivery terms: FCA Amieira, Marinha Grande, loaded on truck, Payment terms: 100% payment prior to collection, dimensions (l x w x h) approx.: 1,800 x 1,400 x 2,000 mm, weight approx.: 1,500 kg



MEP TIGER 350 SX Circular Saw

MEP TIGER 350 SX Automatic circular saw
Serial number 11753038/F
Saw blade diameter: 350 mm
Cutting speeds: 15-30-45-90 Rpm
Total power: 2.5 kW
Cutting capacity:
Round tube:
· 0 ° - 120 mm
· +/- 45 ° - 110 mm
· 60 ° - 110 mm
Square:
· 0 ° - 100 mm
· +/- 45 ° - 100 mm
· 60 ° - 80 mm
Flat tube:
· 0 ° - 180 x 100 mm
· +/- 45 ° - 125 x 100 mm
· 60 ° - 90 x 100 mm
Extra discs included

Item number: 710089, Manufacturer: MEP, Model / Type: TIGER 350 SX, Year of manufacture: 2000, Item available from: immediately, Item condition: unchecked, Delivery terms: FCA Amieira, Marinha Grande, loaded on truck, Payment terms: 100% payment prior to collection, weight approx.: 300 kg, dimensions (l x w x h) approx.: 1,000 x 1,000 x 1,450 mm



BAYKAL APHS 3112 x 240 COMPACT Press Brake

Press brake
Model APHS 3112 x 240
Serial number: 19099
Capacity: 240 Tn
Foldable length: 3100 mm
Beam stroke: 260 mm
Backgauge X stroke: 700 mm
Distance between columns: 2550 mm
Table width: 90 mm
Approximate speed: 90 mm/s
Working speed: 7.6 mm/s

Return speed: 80 mm/s
Number of CNC controlled axes: 3
CNC Model
Motor power: 18.5 kW
Tools included

Item number: 710090, Manufacturer: BAYKAL, Model / Type: APHS 3112 x 240 COMPACT, Year of manufacture: 2013, Item available from: immediately, Item condition: unchecked, Delivery terms: FCA Amieira, Marinha Grande, loaded on truck, Payment terms: 100% payment prior to collection, weight approx.: 11,000 kg, dimensions (l x w x h) approx.: 3,600 x 1,800 x 2,800 mm



TRENS TRENCIN SN 500 S / 1000 Centre Lathe

Serial number 88005010990247
Distance between points: 1000 mm
Maximum turning diameter: 700 mm
Spindle bore: 77 mm
Fast axes
Number of gears: 18
N speed = 12 - 2000 Rpm
400 V electrical connection
SONY 2-axis DRO
Equipped with various accessories such as fast turret, iron holders, soft bushing clamps
1 x Chuck 3 Jaw 315 mm

Item number: 710091, Manufacturer: TRENS TRENCIN, Model / Type: SN 500 S / 1000, Year of manufacture: 1999, Item available from: immediately, Item condition: unchecked, Delivery terms: FCA Amieira, Marinha Grande, loaded on truck, Payment terms: 100% payment prior to collection, weight approx.: 1,795 kg, dimensions (l x w x h) approx.: 2,700 x 1,000 x 1,500 mm



Tool Cabinet with Content

Tool cabinet for milling machines or boring mill machines, etc
Cones ISO 50: 37 uts.
Content included

Item number: 710092, Manufacturer: unknown, Item available from: immediately, Item condition: unchecked, Delivery terms: FCA Amieira, Marinha Grande, loaded on truck, Payment terms: 100% payment prior to collection, weight approx.: 200 kg, dimensions (l x w x h) approx.: 1,250 x 450 x 1,780 mm



GREEN MAC VERSUS 4000 Aluminum CNC Machining Center

Aluminium CNC machining center
Serial Number 991171
Worktable length: 4000 mm
Turning worktable
4-Axis
Toolholder with 6 positions
CE Standards

Item number: 710093, Manufacturer: GREEN MAC, Model / Type: VERSUS 4000, Year of manufacture: 2002, Item available from: immediately, Item condition: unchecked, Delivery terms: FCA Amieira, Marinha Grande, loaded on truck, Payment terms: 100% payment prior to collection, weight approx.: 4,500 kg, dimensions (l x w x h) approx.: 5,800 x 1,500 x 1,750 mm



RAY RG 202K Milling Head

High Rotation milling head
Type: RG 202K
Nr. 2.18.17.713
Volt: -260 Hz 50 br> VA: 800
Working speed: from 15.000 up to 60.000 Rpm

Item number: 710897, Manufacturer: RAY, Model / Type: RG 202K, Year of manufacture: 2008, Item available from: immediately, Item condition: unchecked, Delivery terms: FCA Amieira, Marinha Grande, loaded on truck, Payment terms: 100% payment prior to collection, weight approx.: 60 kg, dimensions (l x w x h) approx.: 860 x 660 x 370 mm



Milling Table

Deckel FP3 Milling Table
Working Table Dimensions: 1000 mm x 430 mm
5 Horizontal T-Slots
2 Vertical T-Slots
Tension clamp 90 in 90 mm x 4
T-Slot of 20mm

Item number: 684812, Manufacturer: DECKEL, Item available from: immediately, Item condition: unchecked, Delivery terms: FCA Amieira, Marinha Grande, loaded on truck, Payment terms: 100% payment prior to collection, weight approx.: 200 kg, dimensions (l x w x h) approx.: 1,117 x 500 x 420 mm



BIHLER RM-30 Automatic Punching Machine

Max feeding length: 270 mm
Max strip width: 40 mm
Max wire diameter: 3 mm
Tonnage: 5 ton
Machine with all original manuals and documentation available
Maximum operating speed: 400 strokes per minute

Item number: 707664, Manufacturer: BIHLER, Model / Type: RM-30, Year of manufacture: 1982, Item available from: immediately, Item condition: unchecked, Delivery terms: FCA São Francisco - Alcochete, free on truck, Payment terms: 100% payment prior to collection, weight approx.: 2,000 kg, dimensions (l x w x h) approx.: 2,180 x 1,440 x 1,930 mm



LEINHAAS Control Units for Hydraulic Presses Line

2x PLC monitors
2x CPU machine control
Multiple input and output cards
2x siemens S5 PLC
Feeder controller
All items are part of the control units of two LEINHAAS hydraulic presses
It is all the electronic part of control of operation of the presses
All the articles were disassembled from the machine in full operation

Item number: 707666, Manufacturer: LEINHAAS, Year of manufacture: 1996, Item available from: immediately, Item condition: unchecked, Delivery terms: FCA São Francisco - Alcochete, free on truck, Payment terms: 100% payment prior to collection, dimensions (l x w x h) approx.: 1,200 x 800 x 800 mm, weight approx.: 100 kg



DAEWOO PUMA 300 CNC Lathe

CNC Lathe
Distance between points 900 mm
X-axis stroke: 500 mm
Z-axis stroke: 1025 mm
Bar passage: 90 mm
Working speed: 1500 Rpm

Item number: 707430, Manufacturer: DAEWOO, Model / Type: PUMA 300 CNC, Item available from: immediately, Item condition: unchecked, Delivery terms: FCA Agueda, free on truck, Payment terms: 100% payment prior to collection, weight approx.: 4,000 kg, dimensions (l x w x h) approx.: 4,000 x 2,000 x 2,000 mm



KIHEUNG KNC - U800 Bed Type Milling Machine

Serial number 5080390
Max. spindle speed: 3000 Rpm
Table length 2300 mm
Table width 800 mm
Max load on table 3500 kg
Spindle taper ISO 50
X-axis travel: 1900 mm
Y-axis travel: 800 mm
Z-axis travel: 800 mm
CNC Heidenhain 426
CE Standards

Item number: 707434, Manufacturer: KIHEUNG, Model / Type: KNC - U800, Year of manufacture: 1998, Item available from: immediately, Item condition: unchecked, Delivery terms: FCA Agueda, loaded on truck, Payment terms: 100% payment prior to collection, weight approx.: 11,500 kg, dimensions (l x w x h) approx.: 4,000 x 2,700 x 2,850 mm



TOS FGSH 40 Bed Type Milling Machine

Serial number FGSH 40-411060002
Working table length: 1400 mm
Working table width: 400 mm
Maximum rotary speed of the vertical spindle: 1800 Rpm
Travel length X-axis: 1000 mm
Travel length Y-axis: 400 mm
Travel length Z-axis : 450 mm
Power of the spindle drive: 7.5 kW
HEIDENHAIN Digital read out

Item number: 707435, Manufacturer: TOS, Model / Type: FGSH 40, Year of manufacture: 1985, Item available from: immediately, Item condition: unchecked, Delivery terms: FCA Agueda, free on truck, Payment terms: 100% payment prior to collection, weight approx.: 4,000 kg, dimensions (l x w x h) approx.: 2,500 x 2,500 x 2,200 mm



Manual Coating Installation with Electrostatic Coating Cabin

Manual coating installation with electrostatic coating cabin

1 - GENERAL SPECIFICATIONS:

- Workpiece Dimensions:
Max. Height 1.800 mm
Max. Width 1.500 mm
Max. Length 1.800 mm
Max. Thickness 7 mm
Max. weight (supported in rack) 350 Kg
- Electric Consumption:

Consumption (machine) (50 Hz) 400V+N+T (230V+T)
Metallic wash house 8 kW
Complete painting booth 25 kW
Polymerization Oven 6 kW
Total consumption 39 kW

Fuel Supply LPG
Polymerization 150.500 kcal/h
Total Consumption 602.000 kcal/h

2 - EQUIPMENT DESCRIPTION

- CABIN WITH PRODUCT RECOVERY TREATMENT SYSTEM:
Useful dimensions: 4000 x 3500 x 4500 mm (H x W x D);
Clearance gauge: 2000 x 2200 mm (W x H);
Construction in isorighe boards ref. 1000/40BG-BG with 40 mm insulation, colour Ral 9006,

duly structured with sheet metal gutter.

Structured with ST 37 steel sheet rails.

6 Lamps 3 x 36W

An exhaustion dome, equipped with a helicoidal fan, mod. HPX-56-4T-1.5

Equipped with phosphating machine treatment system with product recovery

The high pressure washer is used in manual treatment systems (of parts to be treated). Its purpose is to degrease / phosphate the parts to paint.

Principle of Operation: this machine should make a dilution of 1:2 and aspiration of the solution efficiently. The water diluted with the solution is sucked into a tank, and manually launched by a lance directly on the parts to degrease/phosphatize, during a

necessary time. After this operation (Degreasing/Fosphatizing), the product's suction is switched off and only water is washed, at room temperature.

The product recommended by Chemetall for preparing the solution to be used is GARDOBOND KHS at 65

g/litre (54 ml/litre).

Temperature: 60 - 80 °C

Time: Variable, depending on the type of workpiece and its contamination!

The analysis value at the exit of the lance should be Total Acidity = 7.5 - 8.5 points.

NOTE: The product for preparing the solution, draining and treating water from washing, electrical connections electrical connections, water and fuel (diesel), to be paid by the

CLIENT. HDS 8/18 - 4 C Washer

Three-phase 4-pole hot water high pressure washer, water-cooled electric motor, with storage compartment storage compartment, Eco mode, 1-button operation, integrated tanks, Easy Press, continuous adjustment of pressure and water flow, etc.

Accessories supplied with the machine:

- Gun with soft grip coating
- High pressure hose 10 m DN 6, 250 bar
- Lance 600 mm
- Milling nozzle
- SDS system

- Anti-creasing system (AVS)

- Pressure control switch

- Integrated detergent and fuel tanks

- Servo Control (pressure control)

Current type Ph/V/Hz 3/400/50

Water flow rate (l/h) 300 - 800

Working pressure (bar/MPa) 30 - 180 / 3 - 18

Max. working temperature (°C) (°C) 80 - 155

Power (kW) 6

Diesel consumption (kg/h) 5

Fuel tank (l) 15

Weight (kg) 112

Measures (L x W x H) (mm) 1060 x 650 x 920

Detergent tank (l) 10

DESCRIPTION: Compact class high performance three-phase hot water high-pressure washer

with 4-pole motor water-cooled motor.

The Eco mode ensures an economical and ecological use.

Easy to use thanks to the one-button operation.

Excellent mobility thanks to large wheels and steering roller.

Chassis robust chassis with integrated detergent and fuel tanks.

Ergonomic Easy Press gun with Softgrip and Continuous pressure and flow control in the gun.

Practical storage compartments for accessories, nozzles, etc.

· POWDER SPRAY BOOTH, WITH INCORPORATED FILTRATION (LOOSE POWDER):

Useful inside dimensions: 3000 x 3000 x 4500 mm (Height x Width x Length).

Clearance gauge: 2100 x 2000 mm (height x width)

Construction in 40 mm insulated polyurethane panel, duly structured with a steel profile. Interior lighting system with LED reinforcement.

Composed of a cartridge filtration system, with a capacity of 12 000 m³/h,!

A suction speed of about 0.50 metres per minute is calculated on the cabin's entry gauge.

The automatic suction and filtering system is a automatic dedusting by filter cartridges with high highly efficient from an economic and environmental point of view. With a retention performance that eliminates the conventional extraction to the exterior, allowing total recycling of the air inside the building.

The careful construction of INTELLYSYS, using pressed, bent and painted panels, means that they are in machines of high robustness. The filtering cartridges are made of top quality "fabric", performing quality, performing filtration operations efficiently and long-lasting. The cartridges are assembled on galvanized or painted galvanized or painted metal cages, to increase resistance and resistance and durability.

Especially suitable for medium and fine dust filtration, maintains a high filtration efficiency and a perfect cleaning of the bottom of the filtering structure, thanks to the continuous operation of the Cleaning System.

Electric panel with electronic variable speed drive

Functional Characteristics:

Flow rate 12.000 [m³/h] - 12.000 - [m³/h]

N° of solenoid valves - 4

Floor area - 2080 x 1160 x 4130 mm - [mm (h)]

Number of cartridges - 8 pcs x(Ø324x1000) polypropylene

Fan

Type - DCR 501/B

Flow rate - 12,000 [m³/h]

Total Pressure - 347 [mm W.C.] Speed

Rotational speed - 2,930 [R.P.M] Installed power

Installed power - 18.5 kW, 2-pole

Voltage - 400 / 690 [Volt]

Frequency - 50 [Hz].

· MANUAL APPLICATION EQUIPMENT WAGNER POWDER:

2 WAGNER SPRINT application equipment

AIRFLUID, composed of (each)

- 1 PEM X1 latest generation gun

- 1 Trolley with vibration table

- 1 Generator EPG - SprintX

· GAS STATIC POLYMERIZATION OVEN:

Robust construction in galvanized sheet in thicknesses of thickness of 1.5, 2.5, and 3 mm; Construction in panels "sandwich" of 150 mm, built in Rock Wool core, density of 120 kg/m³ high thermal insulation, painted exterior colour "SILVER METALIC" and interior face in galvanized sheet metal, duly structured and reinforced. This guarantees a minimum

differential between the temperature of the exterior wall of the and the ambient temperature;

Two half Sliding Doors on the top of the Oven.

1 Slot for overhead gutters (not included)

Heating through ONE Burner with direct flame burner, radiant tube, Mod.BPR150 MB

· Sensor Element: PT100 probe;

· Maximum Thermal Power: 175kW;

Electrical Control, Protection and Command Panel.

Maximum temperature: 250 °C;

Air recirculation caused by 3 centrifugal fans equipped with a 2 Cv motor, fans type CMSH

1445 -4T - 2CV with an operating point of 3 500 m³/h at 60mmH₂O, each. We have designed around 362 re-circulations/hour, which for an internal volume of approx. 29 m³, constitutes a circulating flow of approx.10,500 m³/h.

Anti-blocking safety system inside;

Electric control panel, protection and command with temperature indication through digital

controller, heating, regime and ventilation signaling, general cut-off switch, protection of the motors with circuit breakers, working timer, end of operation buzzer and active safety circuit, (CE)

· OVERHEAD RAIL CONVEYOR:

NIKO overhead rail and accessories

Air rail in profile, 3.5mm thick, with yellow galvanization. Its conical design, allows the correct alignment of the trolleys and reduces the possibility of dust accumulation. This guarantees the proper functioning of the trolleys and the long life of the profile. This type of profile requires only 1-4% strength of the total weight of the total weight

to be handled.

Maximum load (350 Kg / rack)

9 Piece holder frames, built in rectangular rectangular tubular profile and T-bar, perforated throughout dimension (4,000 mm), for the placement of hooks.

Equipped with 2 high temperature trolleys, each for to be moved on a rail each.

· FLUE GAS EXTRACTION DUCTS:

Flue gas extraction ducts made of INOX sheet in INOX plate, others in galvanized spiral pipe.

Piping construction in accordance with Decree-Law No. 78/2004 of 3 April, Ordinance

263/2005 and Rectification 38/2005 and standard NP 2167 of 1992;

Diameters in accordance with the machine outputs;

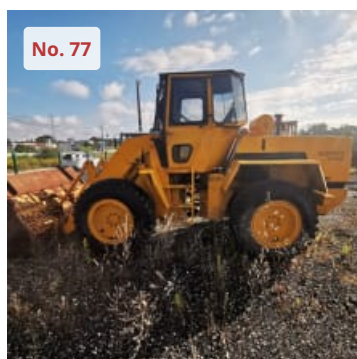
Fixing through unions or embedding of easy replacement easy replacement;

Roof sealing by plates, according to the roof tile, with the tile, with sealing by mastik and aluminium tape aluminium tape;

Joints by inlaying and insulated by aluminium tape aluminium tape;

Trolley carriage, bridge crane type, cross travel, with mechanical interlocking system and anti-fall safety device for the frame. It comprises the trolley carriage, multiple crossing lines, locks and an operator's lever.

Item number: 708087, Manufacturer: INTEELLYSYS, Model / Type: EE 004 17, Year of manufacture: 2017, Item available from: immediately, Item condition: unchecked, Delivery terms: FCA Brito - Guimarães, loaded on truck, Payment terms: 100% payment prior to collection, dimensions (l x w x h) approx.: 19,000 x 12,000 x 3,500 mm, weight approx.: 8,500 kg



EBRO 1022 Wheel Loader

Wheel loader

Model 1022

Working hours according to counter: 10.140 hours

Without battery !!

To transport this machine you need an appropriate truck with loading ramp. If you have to load it with a crane or use other means, an additional amount will be charged for this service

Please note that the delivery term "loaded on truck" is only valid for the machines as shown at the pictures and a suitable truck is required for transport. Any additional services to reduce the dimensions for transport will cause further costs that have to be

agreed and paid before the pick up

Item number: 708057, Manufacturer: EBRO, Model / Type: 1022, Item available from: immediately, Item condition: unchecked, Delivery terms: FCA Cova das Faias - Leiria, loaded on truck, Payment terms: 100% payment prior to collection, dimensions (l x w x h) approx.: 6,100 x 2,400 x 2,800 mm, weight approx.: 10,000 kg



DAF 1700 TURBO Truck

Heavy duty truck

Registration number 73-27-QE

Model 1700 TURBO

Diesel

Year 1993

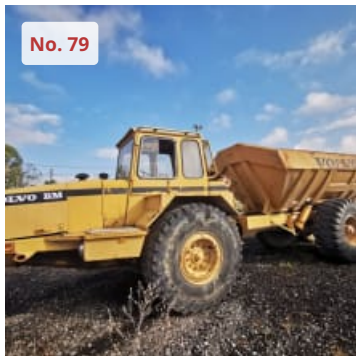
Mileage according to the counter: 311.030 km

Without battery !!

To transport this machine you need an appropriate truck with loading ramp. If you have to load it with a crane or use other means, an additional amount will be charged for this service

Please note that the delivery term "loaded on truck" is only valid for the machines as shown at the pictures and a suitable truck is required for transport. Any additional services to reduce the dimensions for transport will cause further costs that have to be agreed and paid before the pick up

Item number: 708058, Manufacturer: DAF, Model / Type: 1700 TURBO, Year of manufacture: 1993, Item available from: immediately, Item condition: unchecked, Delivery terms: FCA Cova das Faias - Leiria, loaded on truck, Payment terms: 100% payment prior to collection, dimensions (l x w x h) approx.: 7,400 x 2,700 x 2,750 mm, weight approx.: 8,000 kg



VOLVO BM 861 Dumper

Dumper
Model BM 861
Serial number 58050
Working hours according to counter: 2.284 hours
Without battery !!

To transport this machine you need an appropriate truck with loading ramp. If you have to load it with a crane or use other means, an additional amount will be charged for this service

Please note that the delivery term "loaded on truck" is only valid for the machines as shown at the pictures and a suitable truck is required for transport. Any additional

services to reduce the dimensions for transport will cause further costs that have to be agreed and paid before the pick up

Item number: 708059, Manufacturer: VOLVO, Model / Type: BM 861, Item available from: immediately, Item condition: unchecked, Delivery terms: FCA Cova das Faias - Leiria, loaded on truck, Payment terms: 100% payment prior to collection, dimensions (l x w x h) approx.: 10,300 x 2,550 x 2,880 mm, weight approx.: 13,000 kg



MAN 26.414 Truck

Heavy duty truck
Registration number 12-AZ-54
Model 26.414
Diesel
Year 2000
Mileage according to the counter: 854.167 km
Without battery !!

To transport this machine you need an appropriate truck with loading ramp. If you have to load it with a crane or use other means, an additional amount will be charged for this service

Please note that the delivery term "loaded on truck" is only valid for the machines as shown at the pictures and a suitable truck is required for transport. Any additional services to reduce the dimensions for transport will cause further costs that have to be agreed and paid before the pick up

Item number: 708062, Manufacturer: MAN, Model / Type: 26.414, Year of manufacture: 2000, Item available from: immediately, Item condition: unchecked, Delivery terms: FCA Cova das Faias - Leiria, loaded on truck, Payment terms: 100% payment prior to collection, dimensions (l x w x h) approx.: 9,500 x 2,900 x 3,350 mm, weight approx.: 8,000 kg



Beading Machine

Beading machine
Max. sheet width: 2000 mm
Sheet thickness: 0.55 - 1.2 mm
Forming speed: 13 m/min
Motor power: 1.1 kW
Voltage: 400 V
Pedal operated

See also pdf

Item number: 708081, Manufacturer: SWAH, Item available from: immediately, Item condition: unchecked, Delivery terms: FCA Brito - Guimarães, loaded on truck, Payment terms: 100% payment prior to collection, dimensions (l x w x h) approx.: 2,550 x 1,300 x 1,270 mm, weight approx.: 550 kg



Filter

Filter
Serial number Y20MMV01067
Nominal power: 4 kW
Power supply: 3 - 400 V
CE Standards

Item number: 708082, Manufacturer: MM METALICA, Model / Type: CEPF - R3, Year of manufacture: 2020, Item available from: immediately, Item condition: unchecked, Delivery terms: FCA Brito - Guimarães, loaded on truck, Payment terms: 100% payment prior to collection, dimensions (l x w x h) approx.: 1,500 x 1,550 x 1,500 mm, weight approx.: 790 kg



Filter

Filter
Serial number Y20MMV01068
Nominal power: 4 kW
Power supply: 3 - 400 V
CE Standards

Item number: 708083, Manufacturer: MM METALICA, Model / Type: CEPF - R3, Year of manufacture: 2020, Item available from: immediately, Item condition: unchecked, Delivery terms: FCA Brito - Guimarães, loaded on truck, Payment terms: 100% payment prior to collection, dimensions (l x w x h) approx.: 1,500 x 1,550 x 1,500 mm, weight approx.: 790 kg



Filter

Filter
Serial number Y20MMV01069
Nominal power: 4 kW
Power supply: 3 - 400 V
CE Standards

Item number: 708084, Manufacturer: MM METALICA, Model / Type: CEPF - R3, Year of manufacture: 2020, Item available from: immediately, Item condition: unchecked, Delivery terms: FCA Brito - Guimarães, loaded on truck, Payment terms: 100% payment prior to collection, dimensions (l x w x h) approx.: 1,500 x 1,550 x 1,500 mm, weight approx.: 790 kg



DALAMATIC Dust Collector

Dalamic Concept Dust Collectors
Inspection door (fitted opposite side to inlet)
Control equipment access doors
Filter chamber access doors
Integral fan
Total Control Board (TCB)
Discharge hopper(s)
Skip(s) (3-bank collectors are supplied with 2 skips, removable from the front.
2-bank collectors are supplied with 1 skip, removable from the side)
Dalamic Concept 3-bank, 3-tier collector (D 135), with skip configuration:
Collector type D 135

No. of levels: 3
No. of cells: 9
Dust container: 2
Screw conveyor
Fan type: K21 CDR22

Motor rating: 18.5 kW / 22.0 kW
Rotary valve hopper outlet flange details
All holes \varnothing 14 mm for M12 bolts. Pitch centres: 151 mm
Inside dimensions of hopper outlet = 242 x 242mm
Cleaned air outlet details (with deflector removed)

Outlet details for 3-bank collector illustrated.
Outlet for 2-bank collector has 5 horizontal bolt holes.
All holes \varnothing 12 mm for M10 bolts. Pitch centres: 150 mm
Screw conveyor hopper outlet flange details
Flange details for 3-bank collector illustrated.
Flange for 2-bank collector has 8 horizontal bolt holes.
All holes 12 x 20 mm slots, parallel to long edge.
Pitch centres: 150 mm except where shown

APPROXIMATE NET WEIGHTS in kg:

With skip 4710 kg
With dust container 4660 kg
With screw conveyor 4565 kg

COMPRESSED AIR REQUIREMENTS:

Working compressed air pressure 3.7 ba / 55 psig
Atmospheric air volume \dot{V} F.A.D. 28.6 m³/h - 16.8 cfm
Pulse interval 8 sec.
Pulse duration 60 ms

NOISE LEVELS: Machinery noise levels are an important consideration in the design and selection of new equipment.
Several EC Directives and National Laws/Regulations adopting these directives make reference to airborne noise emissions.
Actions that employers are required to comply with if employees are subjected to a daily personal noise exposure $L_{ep,d}$ of 85 dB(A) or more are also specified.
All Dalamatic Concept collectors are below this action limit

WEIGHTED SOUND PRESSURE LEVELS:

All readings were taken in normal industrial areas, i.e. semi-reverberant surroundings, with local equipment silent.
Measurements were taken at maximum air flow conditions at 1.0 metre radius from the equipment housing and 1.6 metres above base level, using a precision sound level meter and octave filter

ELECTRICAL SPECIFICATIONS:

Full automatic cleaning mechanism: Total Control Board
Pulse time: 60 ms
Interval time: 8 sec. or 12 sec.
Voltage input: 400V AC; 3 ph; 50 Hz
Protection class: IP65
Solenoid voltage: 24V DC

Item number: 708085, Manufacturer: DALAMATIC, Model / Type: D 135, Item available from: immediately, Item condition: unchecked, Delivery terms: FCA Brito - Guimarães, loaded on truck, Payment terms: 100% payment prior to collection, dimensions (l x w x h) approx.: 2,300 x 2,900 x 5,200 mm, weight approx.: 2,200 kg



Bending Rollers

Bending rollers
Maximum thickness: 4 mm
Maximum working width: 1500 mm
3 bending rollers
Manual lifting-lowering
Pedal operated

Item number: 708086, Manufacturer: unknown, Item available from: immediately, Item condition: unchecked, Delivery terms: FCA Brito - Guimarães, loaded on truck, Payment terms: 100% payment prior to collection, dimensions (l x w x h) approx.: 2,000 x 800 x 1,330 mm, weight approx.: 700 kg



SAGRERA Spindle Moulder

Spindle Moulder

Item number: 685497, Manufacturer: SAGRERA, Item available from: immediately, Item condition: unchecked, Delivery terms: FCA Trofa, loaded on truck, Payment terms: 100% payment prior to collection, dimensions (l x w x h) approx.: 800 x 800 x 1,300 mm, weight approx.: 350 kg



DMG MORI Ball Screw Spindle

Ball screw spindle Y/X

Item number: 685265, Manufacturer: DMG MORI, Year of manufacture: 2019, Item available from: immediately, Item condition: unchecked, Delivery terms: FCA Vila Real, loaded on truck, Payment terms: 100% payment prior to collection, dimensions (l x w x h) approx.: 1,400 x 400 x 400 mm, weight approx.: 40 kg



JITEN ZNC 540 Sinking Eroding Machine

JITEN AZN EDM

Serial number 0010406

ZNC 75 AMP controller

Table size: 800 x 400 mm

Stroke: 508 x 406 x 457 mm

Item number: 707448, Manufacturer: JITEN, Model / Type: ZNC 540, Year of manufacture: 2001, Item available from: immediately, Item condition: unchecked, Delivery terms: FCA Leiria PORTUGA, loaded on truck, Payment terms: 100% payment prior to collection, weight approx.: 2,200 kg, dimensions (l x w x h) approx.: 3,350 x 4,450 x 4,900 mm