

# Auction Catalogue

## Stock Clearance of Construction Machinery - No Reserve Prices!

Lisbon area

Portugal

Viewing by appointment only!

**50 lots**

### **Bidding ends:**

Thursday, 31/03/2022, 11:00(local time)

Bids are welcome immediately and can be placed at:

### **Contact:**

Agustin Fernandez

+34 936 393 895

agustin.fernandez@surplex.com

www.surplex.com

### **Viewing:**

Lisbon area

Portugal

Viewing by appointment only!

Thursday, **24/03/2022**, from 11:00 to 17:00

### **Description:**

Stock clearance of construction machinery.

Main lots:

- MANITOU MRT 1840 Rotating Telehandler
- MANITOU M 50-4 T Diesel Forklift (2012)
- JCB VM 115 D Vibratory Roller (2008)
  - JLG 800 AJ Articulated Boom Lift
- MANITOU M 50-4 T Diesel Forklift (2011)
  - JLG 450 AJ Articulated Boom Lift
- JCB VM 115 D Vibratory Roller (2007)

And others



## MANITOU M 50-4 T Diesel Forklift

Diesel Forklift  
Serial number 595171  
YOM: 2011  
Power: 70 kW  
Maximum load capacity: 5000 kg  
Max lifting height: 5500 mm  
Minimum passage height: 2900 mm  
Free lift: 1860 mm  
Triplex mast  
Fork length: 1200 x 150 mm  
3 operations: Raise-lower / Tilt / Side shift

Working hours according to counter: 3117 h  
Lights and seat belt  
CE Standards

Item number: 727490, Manufacturer: MANITOU, Model / Type: M 50-4 T, Year of manufacture: 2011, Item available from: immediately, Item condition: unchecked, Delivery terms: FCA Porto Alto, Samora Correia, loaded on truck, Payment terms: 100% payment prior to collection, serial number: 595,171, loading capacity: 5,000 to, lifting height: 5,500 mm, length of forks: 1200x150 mm, overall height: 2,900 mm, operating hours: 3,109 h, dimensions (l x w x h) approx.: 5,150 x 2,160 x 2,900 mm, weight approx.: 8,040 kg



## HAULOTTE COMPACT 12 Electric Scissor Lift

Electric scissor lift  
Serial number CE 142468  
YOM: 2010  
Max lifting height: 12 m  
Max platform height: 10 m  
Maximum load capacity (inside): 2P + 140 kg  
Maximum load capacity (outdoors): 1P + 220 kg  
Maximum inclination: 2°  
Maximum wind speed: 12.5 m/sec  
Travel speed: 1-3.5 km/h  
Turning radius: 2.5 m

Power: 3 kW  
Battery: 24V  
Solid wheels  
Working hours according to counter: 523 h  
CE Standards

Item number: 727489, Manufacturer: HAULOTTE, Model / Type: COMPACT 12, Year of manufacture: 2010, Item available from: immediately, Item condition: unchecked, Delivery terms: FCA Porto Alto, Samora Correia, loaded on truck, Payment terms: 100% payment prior to collection, dimensions (l x w x h) approx.: 2,480 x 1,240 x 2,400 mm, weight approx.: 2,630 kg



## KAESER M50 Mobile Compressor

Portable compressor  
Serial number 1004  
YOM: 2007  
Engine: KUBOTA V1505-T  
Power: 31.3 kW  
Working speed: 3000 Rpm  
Working pressure: 7 bar  
Fuel: Diesel  
Working hours according to counter: 2889 h  
CE Standards

Item number: 728820, Manufacturer: KAESER, Model / Type: M50, Year of manufacture: 2007, Item available from: Immediately, Item condition: unchecked, Delivery terms: FCA Porto Alto, Samora Correia, loaded on truck, Payment terms: 100% payment prior to collection, dimensions (l x w x h) approx.: 3,150 x 1,450 x 1,240 mm, weight approx.: 750 kg



No. 4

## JLG 1930ES Electric Scissor Lift

Electric scissor lift  
Serial number 1200020495  
YOM: 2008  
Max lifting height: 7,6 m  
Max platform height: 5,7 m  
Maximum load capacity: 230 kg  
Maximum load capacity (inside): 2P + 70 kg  
Maximum load capacity (outdoors): 1P + 40 kg  
Maximum inclination: 5°  
Maximum wind speed: 12.5 m/sec  
Travel speed: 4.8 km/h

Battery: 24V  
Solid wheels: 323 x 100 mm  
Working hours according to counter: 640 h  
CE Standards

Item number: 728366, Manufacturer: JLG, Model / Type: 1930ES, Year of manufacture: 2008, Item available from: Immediately, Item condition: unchecked, Delivery terms: FCA Porto Alto, Samora Correia, loaded on truck, Payment terms: 100% payment prior to collection, dimensions (l x w x h) approx.: 2,000 x 800 x 1,960 mm, weight approx.: 1,480 kg



No. 5

## JCB VM 115 D Vibratory Roller

Vibratory roller  
Serial number JCB 1801288  
YOM: 2007  
Roller width: 2100 mm  
Roller diameter: 1490 mm  
Power 97 kW  
Displacement: 4399 cm<sup>3</sup>  
Drum Drive  
Engine: JCB 444 4-stroke with turbocompressor and external intercooler  
Liquid-cooled 4-cylinder engine  
Fuel: Diesel

Operational load on the front axis: 6000 kg  
Operational load on the rear axis: 5300 kg  
Compaction depth: 700-900 mm  
Turning radius (inside): 3400 mm  
Allowable longitudinal slope: 30%

Allowable cross slope: 25%  
2 working speeds: 1st speed 0-4.5 km/h / 2nd speed 0-10.5 km/h  
2 vibration positions: 1860 - 2160 Rpm  
Working hours according to counter: 9513 h  
Tires: 23.1-26

CE Standards

Item number: 728949, Manufacturer: JCB, Model / Type: VM 115 D, Year of manufacture: 2007, Item available from: Immediately, Item condition: unchecked, Delivery terms: FCA Porto Alto, Samora Correia, loaded on truck, Payment terms: 100% payment prior to collection, dimensions (l x w x h) approx.: 5,500 x 2,300 x 2,935 mm, weight approx.: 11,300 kg



No. 6

## GESAN DVS 150 Power Generator

Power generator  
Serial number 209964  
YOM: 2007  
Power: 120 kW  
Working speed: 1500 Rpm  
Frequency: 50 Hz  
Voltage: 230-400 V  
Engine: VOLVO PENTA TAD 731 GE  
Engine power: 163 kW  
Alternator: STAMFORD UC.I274F1  
Control: DEEP SEA ELECTRONICS DSE 7320 MKII

Fuel: Diesel  
Working hours according to counter: 28023 h  
CE Standards

Item number: 729236, Manufacturer: GESAN, Model / Type: DVS 150, Year of manufacture: 2007, Item available from: Immediately, Item condition: unchecked, Delivery terms: FCA Porto Alto, Samora Correia, loaded on truck, Payment terms: 100% payment prior to collection, dimensions (l x w x h) approx.: 3,510 x 1,120 x 1,920 mm, weight approx.: 2,628 kg



## JLG 1930ES Electric Scissor Lift

Electric scissor lift  
Serial number 1200020498  
YOM: 2008  
Max lifting height: 7,6 m  
Max platform height: 5,7 m  
Maximum load capacity: 230 kg  
Maximum load capacity (inside): 2P + 70 kg  
Maximum load capacity (outdoors): 1P + 40 kg  
Maximum inclination: 5°  
Maximum wind speed: 12.5 m/sec  
Travel speed: 4.8 km/h

Battery: 24V  
Solid wheels: 323 x 100 mm  
Working hours according to counter: 663 h  
CE Standards

Item number: 728540, Manufacturer: JLG, Model / Type: 1930ES, Year of manufacture: 2008, Item available from: Immediately, Item condition: unchecked, Delivery terms: FCA Porto Alto, Samora Correia, loaded on truck, Payment terms: 100% payment prior to collection, dimensions (l x w x h) approx.: 2,000 x 800 x 1,960 mm, weight approx.: 1,480 kg



## MANITOU M 50-4 T Diesel Forklift

Diesel Forklift  
Serial number 911289  
YOM: 2012  
Power: 70 kW  
Maximum load capacity: 5000 kg  
Max lifting height: 5500 mm  
Minimum passage height: 2900 mm  
Free lift: 1860 mm  
Triplex mast  
Fork length: 1200 x 150 mm  
3 operations: Raise-lower / Tilt / Side shift

Working hours according to counter: 1607 h  
Lights and seat belt  
CE Standards

Item number: 727491, Manufacturer: MANITOU, Model / Type: M 50-4 T, Year of manufacture: 2012, Item available from: immediately, Item condition: unchecked, Delivery terms: FCA Porto Alto, Samora Correia, loaded on truck, Payment terms: 100% payment prior to collection, serial number: 911,289, loading capacity: 5,000 to, lifting height: 5,500 mm, length of forks: 1200x150 mm, overall height: 2,900 mm, operating hours: 1,607 h, dimensions (l x w x h) approx.: 5,150 x 2,160 x 2,900 mm, weight approx.: 8,040 kg





## JLG 450 AJ Articulated Boom Lift

Articulated boom lift  
Serial number E300000161  
YOM: 2011  
Maximum load capacity: 230 kg  
Maximum platform height: 13.7 m  
Maximum horizontal range: 7.5 m  
Maximum angle for telescopic arm: 75°  
Rotation capacity: 357°  
Ground clearance: 0.36 m  
Maximum forward speed: 7.2 km/h  
Maximum inclination: 4°

Maximum ramp tilt: 5%  
Maximum wind speed: 12.5 m/s  
Hydraulic pressure: 310 bar  
Tires: 33 x 15.50-16.5 NHS  
Working hours according to counter: 3788 h

CE Standards

Item number: 729699, Manufacturer: JLG, Model / Type: 450 AJ, Year of manufacture: 2011, Item available from: Immediately, Item condition: unchecked, Delivery terms: FCA Porto Alto, Samora Correia, loaded on truck, Payment terms: 100% payment prior to collection, dimensions (l x w x h) approx.: 6,600 x 2,060 x 2,260 mm, weight approx.: 7,440 kg



## GESAN DVS 250 Power Generator

Power generator  
Serial number 210474  
YOM: 2007  
Power: 200 kW  
Working speed: 1500 Rpm  
Frequency: 50 Hz  
Voltage: 230-400 V  
Engine: VOLVO PENTA TAD 734 GE  
Engine power: 250 kW  
Alternator: STAMFORD UC.DI274K1  
Control: ComAp IntelliGen

Fuel: Diesel  
Working hours according to counter: 16743 h  
CE Standards

Item number: 729237, Manufacturer: GESAN, Model / Type: DVS 250, Year of manufacture: 2007, Item available from: Immediately, Item condition: unchecked, Delivery terms: FCA Porto Alto, Samora Correia, loaded on truck, Payment terms: 100% payment prior to collection, dimensions (l x w x h) approx.: 3,690 x 1,420 x 2,320 mm, weight approx.: 3,980 kg



## HIMOINSA HPW-50 T5 INS Power Generator

Power generator  
Serial number 7111639  
YOM: 2007  
Power: 33.1 kW  
Working speed: 1500 RPM  
Frequency: 50Hz  
Voltage: 230-400V  
Engine: PERKINS  
Alternator: STAMFORD UC.I224D1  
Control: DEEP SEA ELECTRONICS DSE 7310 MKII  
Fuel: Diesel

Working hours according to counter: 20302 h  
CE Standards

Item number: 729672, Manufacturer: HIMOINSA, Model / Type: HPW-50 T5 INS, Year of manufacture: 2007, Item available from: Immediately, Item condition: unchecked, Delivery terms: FCA Porto Alto, Samora Correia, loaded on truck, Payment terms: 100% payment prior to collection, dimensions (l x w x h) approx.: 2,270 x 1,080 x 1,360 mm, weight approx.: 1,315 kg



No. 12

## GESAN DPS 80 Power Generator

Power generator  
Serial number 227680  
YOM: 2008  
Power: 64 kW  
Working speed: 1500 Rpm  
Frequency: 50Hz  
Voltage: 230-400V  
Engine: PERKINS 1104C-44TAG1  
Alternator: STAMFORD UCI.224G1  
Control: DEEP SEA ELECTRONICS DSE 7320 MKII  
Fuel: Diesel

Working hours according to counter: 30886 h  
CE Standards

Item number: 729671, Manufacturer: GESAN, Model / Type: DPS 80, Year of manufacture: 2008, Item available from: Immediately, Item condition: unchecked, Delivery terms: FCA Porto Alto, Samora Correia, loaded on truck, Payment terms: 100% payment prior to collection, dimensions (l x w x h) approx.: 2,810 x 1,050 x 1,560 mm, weight approx.: 1,880 kg



No. 13

## JLG 1930ES Electric Scissor Lift

Electric Scissor Lift  
Serial number 1200020395  
YOM: 2008  
Max lifting height: 7,6 m  
Max platform height: 5,7 m  
Maximum load capacity: 230 kg  
Maximum load capacity (inside): 2P + 70 kg  
Maximum load capacity (outdoors): 1P + 40 kg  
Maximum inclination: 5°  
Maximum wind speed: 12.5 m/sec  
Travel speed: 4.8 km/h

Battery: 24V  
Solid wheels: 323 x 100 mm  
Working hours according to counter: 812 h  
CE Standards

Item number: 728407, Manufacturer: JLG, Model / Type: 1930ES, Year of manufacture: 2008, Item available from: Immediately, Item condition: unchecked, Delivery terms: FCA Porto Alto, Samora Correia, loaded on truck, Payment terms: 100% payment prior to collection, dimensions (l x w x h) approx.: 2,000 x 800 x 1,960 mm, weight approx.: 1,480 kg



No. 14

## HAULOTTE HA12IP Articulated Boom Lift

Articulated boom lift  
Serial number AE700109  
YOM: 2011  
Maximum load capacity: 230 kg  
Maximum load capacity: 2 p. + 70 kg  
Maximum working height: 12 m  
Maximum platform height: 10.02 m  
Maximum horizontal range: 6.735 m  
Platform rotation capacity: +80°/-90°  
Maximum forward speed: 4.4 km/h  
Maximum inclination: 3°

Maximum wind speed: 12.5 m/s  
Maximum gradeability: 25%  
Maximum lateral force: 400 N  
Platform size: 800 x 1200 mm  
Tires: 7.00-12

CE Standards

Item number: 730988, Manufacturer: HAULOTTE, Model / Type: HA12IP, Year of manufacture: 2011, Item available from: Immediately, Item condition: unchecked, Delivery terms: FCA Porto Alto, Samora Correia, loaded on truck, Payment terms: 100% payment prior to collection, dimensions (l x w x h) approx.: 5,430 x 1,350 x 2,020 mm, weight approx.: 5,800 kg



## TOYOTA 7FBMF25 Electric Forklift

Electric forklift  
Serial number 7FBMF25 19626  
YOM: 2012  
Maximum load capacity: 2500 kg  
Max lifting height: 4630 mm  
Minimum passage height: 2200 mm  
Free lift: 1570 mm  
Triplex mast  
Fork length: 1200 x 100 mm  
3 operations: Raise-lower / Tilt / Side shift  
Working hours according to counter: 7272 h

Electric battery: 80 V  
Battery charger included: HOPPECKE D 400 G  
Lights and seat belt  
CE Standards

Item number: 728471, Manufacturer: TOYOTA, Model / Type: 7FBMF25, Year of manufacture: 2012, Item available from: Immediately, Item condition: unchecked, Delivery terms: FCA Porto Alto, Samora Correia, loaded on truck, Payment terms: 100% payment prior to collection, loading capacity: 2,500 to, lifting height: 4,630 mm, length of forks: 1200x100 mm, overall height: 2,200 mm, operating hours: 7,272 h, dimensions (l x w x h) approx.: 3,700 x 1,350 x 2,200 mm, weight approx.: 3,270 kg, serial number: 7FBMF25 19626, mast type: Triplex, charging voltage: 80V, tyre type: Sólido, number of tyres: 4, battery type: Eléctrica



## GESAN DVS 140 Power Generator

Power generator  
Serial number 212406  
YOM: 2007  
Power: 101 kW  
Working speed: 1500 Rpm  
Frequency: 50 Hz  
Voltage: 230-400 V  
Engine: VOLVO PENTA TAD 730 GE  
Engine power: 136 kW  
Alternator: STAMFORD UC1274E1  
Control: DEEP SEA ELECTRONICS DSE 7320 MKII

Fuel: Diesel  
Working hours according to counter: 17504 h  
CE Standards

Item number: 729239, Manufacturer: GESAN, Model / Type: DVS 140, Year of manufacture: 2007, Item available from: Immediately, Item condition: unchecked, Delivery terms: FCA Porto Alto, Samora Correia, loaded on truck, Payment terms: 100% payment prior to collection, dimensions (l x w x h) approx.: 3,530 x 1,140 x 1,840 mm, weight approx.: 2,590 kg



## KAESER M50 Mobile Compressor

Portable compressor  
Serial number 1005  
YOM: 2007  
Engine: KUBOTA V1505-T  
Power: 31.3 kW  
Working speed: 3000 Rpm  
Working pressure: 7 bar  
Fuel: Diesel  
Working hours according to counter: 6052 h  
CE Standards

DOESN'T START!!

Item number: 728927, Manufacturer: KAESER, Model / Type: M50, Year of manufacture: 2007, Item available from: Immediately, Item condition: unchecked, Delivery terms: FCA Porto Alto, Samora Correia, loaded on truck, Payment terms: 100% payment prior to collection, dimensions (l x w x h) approx.: 3,150 x 1,390 x 1,240 mm, weight approx.: 750 kg



## HIMOINSA HPW-50 T5 Power Generator

Power generator  
Serial number 7111641  
YOM: 2007  
Power: 33.1 kW  
Working speed: 1500 RPM  
Frequency: 50Hz  
Voltage: 230-400 V  
Engine: PERKINS  
Control: DEEP SEA ELECTRONICS DSE 7210  
Fuel: Diesel  
Working hours according to counter: 16250 h  
CE Standards

Item number: 729673, Manufacturer: HIMOINSA, Model / Type: HPW-50 T5, Year of manufacture: 2007, Item available from: Immediately, Item condition: unchecked, Delivery terms: FCA Porto Alto, Samora Correia, loaded on truck, Payment terms: 100% payment prior to collection, dimensions (l x w x h) approx.: 2,260 x 1,040 x 1,420 mm, weight approx.: 1,315 kg



## KAESER M50 Mobile Compressor

Portable compressor  
Serial number 1006  
YOM: 2007  
Engine: KUBOTA V1505-T  
Power: 31.3 kW  
Working speed: 3000 Rpm  
Working pressure: 7 bar  
Fuel: Diesel  
Working hours according to counter: 4579 h  
CE Standards

Item number: 728929, Manufacturer: KAESER, Model / Type: M50, Year of manufacture: 2007, Item available from: Immediately, Item condition: unchecked, Delivery terms: FCA Porto Alto, Samora Correia, loaded on truck, Payment terms: 100% payment prior to collection, dimensions (l x w x h) approx.: 3,250 x 1,500 x 1,260 mm, weight approx.: 750 kg

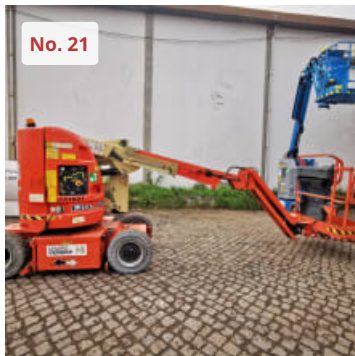


## JLG 1930ES Electric Scissor Lift

Electric scissor lift  
Serial number 1200020403  
YOM: 2008  
Max lifting height: 7,6 m  
Max platform height: 5,7 m  
Maximum load capacity: 230 kg  
Maximum load capacity (inside): 2P + 70 kg  
Maximum load capacity (outdoors): 1P + 40 kg  
Maximum inclination: 5°  
Maximum wind speed: 12.5 m/sec  
Travel speed: 4.8 km/h  
Battery: 24V  
Solid wheels: 323 x 100 mm  
Working hours according to the counter: 727 h  
CE Standards

Item number: 728781, Manufacturer: JLG, Model / Type: 1930ES, Year of manufacture: 2008, Item available from: Immediately, Item condition: unchecked, Delivery terms: FCA Porto Alto, Samora Correia, loaded on truck, Payment terms: 100% payment prior to collection, dimensions (l x w x h) approx.: 2,000 x 800 x 1,960 mm, weight approx.: 1,480 kg





## JLG E300AJP Articulated Boom Lift

Articulated boom lift  
Serial number 0300144144  
YOM: 2011  
Maximum load capacity: 227 kg  
Maximum load capacity: 2 p + 70 kg  
Maximum platform height: 9.14 m  
Maximum platform length: 6.1 m  
Maximum inclination: 3°  
Maximum wind speed: 12.5 m/s  
Gradeability: 25 %  
Lateral force: 400 N

Tires: 25 x 7-12 (180/95-12)  
Working hours according to counter: 1566 h  
Battery: 48 V  
CE Standards

Item number: 730996, Manufacturer: JLG, Model / Type: E300AJP, Year of manufacture: 2011, Item available from: Immediately, Item condition: unchecked, Delivery terms: FCA Porto Alto, Samora Correia, loaded on truck, Payment terms: 100% payment prior to collection, dimensions (l x w x h) approx.: 5,800 x 1,200 x 2,100 mm, weight approx.: 6,850 kg



## GENIE GS-1932 Electric Scissor Lift

Electric scissor lift  
Serial number GS3011C-3465  
YOM: 2011  
Max lifting height: 7,5 m  
Max platform height: 5,6 m  
Platform size: 1640 x 750 mm  
Maximum load capacity: 227 kg  
Maximum load capacity (inside): 2P  
Maximum load capacity (outdoors): 1P  
Maximum inclination: 3°  
Maximum wind speed: 12.5 m/sec

Travel speed: 4.0 km/h  
Power: 3.3 kW  
Battery: 24 V  
Solid wheels (12 x 4 x 8 in)  
Working hours according to counter: 543 h  
CE Standards

Item number: 728774, Manufacturer: GENIE, Model / Type: GS-1932, Year of manufacture: 2011, Item available from: Immediately, Item condition: unchecked, Delivery terms: FCA Porto Alto, Samora Correia, loaded on truck, Payment terms: 100% payment prior to collection, dimensions (l x w x h) approx.: 1,850 x 800 x 2,100 mm, weight approx.: 1,513 kg



## KAESER M50 Mobile Compressor

Portable compressor  
Serial number 1008  
YOM: 2007  
Engine: KUBOTA V1505-T  
Power: 31.3 kW  
Working speed: 3000 Rpm  
Working pressure: 7 bar  
Fuel: Diesel  
Working hours according to counter: 3417 h  
CE Standards

Item number: 728934, Manufacturer: KAESER, Model / Type: M50, Year of manufacture: 2007, Item available from: Immediately, Item condition: unchecked, Delivery terms: FCA Porto Alto, Samora Correia, loaded on truck, Payment terms: 100% payment prior to collection, dimensions (l x w x h) approx.: 3,180 x 1,360 x 1,230 mm, weight approx.: 750 kg

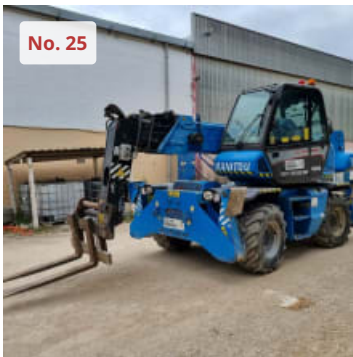


## GESAN DPS 80 Power Generator

Power generator  
Serial number 227681  
YOM: 2008  
Power: 64 kW  
Working speed: 1500 Rpm  
Frequency: 50 Hz  
Voltage: 230-400 V  
Engine: PERKINS 1104C-44TAG1  
Alternator: STAMFORD UC.I224G1  
Control: DEEP SEA ELECTRONICS DSE 7310 MKII  
Fuel: Diesel

Working hours according to counter: 10957 h  
CE Standards

Item number: 729647, Manufacturer: GESAN, Model / Type: DPS 80, Year of manufacture: 2008, Item available from: Immediately, Item condition: unchecked, Delivery terms: FCA Porto Alto, Samora Correia, loaded on truck, Payment terms: 100% payment prior to collection, dimensions (l x w x h) approx.: 2,810 x 1,000 x 1,570 mm, weight approx.: 1,880 kg



## MANITOU MRT 1840 Telescopic Rotating Handler

Telescopic rotating handler MRT 1840  
Serial number 761892  
YOM 2012  
Load capacity: 4000 kg  
4-section telescopic arm  
Max.standard lifting height: 17900 mm  
Lifting height with maximum load: 10600 mm  
Rotation: 400°  
Fork length: 1180 x 120 mm  
Quick clamp  
Forward speed without load: 32 km/h  
Forward speed at rated load: 11 km/h  
Rated power: 74.5kw  
Diesel  
Fuel tank capacity: 130 liters  
Traction force: 8600 daN  
  
Maximum load per tire: 6900 daN  
Number of hydraulic outriggers: 4  
Engine: PERKINS 854E-E34TA, 4-cylinder in-line  
Number of strokes: 4  
Direct injection system

Transmission: hydrostatic REXROTH (pump and variable displacement engine)  
Mechanical gearbox with hydraulic control  
2 forward speeds and 2 reversing speeds  
Working hours according to counter: 3145 h  
Maximum allowable tilt: 3°

Maximum wind speed: 12.5m/s  
Front and rear tires: 400/70-20 14PR  
CE Standards

Item number: 728796, Manufacturer: MANITOU, Model / Type: MRT 1840, Year of manufacture: 2012, Item available from: Immediately, Item condition: unchecked, Delivery terms: FCA Porto Alto, Samora Correia, loaded on truck, Payment terms: 100% payment prior to collection, serial number: 761,892, loading capacity: 4,000 to, lifting height: 17,900 mm, length of forks: 1180x120 mm, overall height: 2,970 mm, operating hours: 3,145 h, dimensions (l x w x h) approx.: 7,200 x 2,460 x 2,970 mm, weight approx.: 13,500 kg



## HAMM HD 12 VV Tandem Roller

Tandem roller  
Serial number H1712020  
YOM: 2010  
Roller width: 1200 mm  
Roller diameter: 710 mm  
Power: 22 kW  
Engine: HATZ 4W35 4-stroke  
Liquid-cooled 4-cylinder engine  
Fuel: Diesel  
Operational load on the front axis: 1260 kg  
Operational load on the rear axis: 1280 kg  
  
Turning radius (inside): 2370 mm  
Allowable longitudinal slope (with vibration): 30%  
Allowable longitudinal slope (without vibration): 40%  
Working speed: 0-10 km/h  
Working hours according to counter: 1192 h

CE Standards

Item number: 728957, Manufacturer: HAMM, Model / Type: HD 12 VV, Year of manufacture: 2010, Item available from: Immediately, Item condition: unchecked, Delivery terms: FCA Porto Alto, Samora Correia, loaded on truck, Payment terms: 100% payment prior to collection, dimensions (l x w x h) approx.: 2,600 x 1,350 x 2,400 mm, weight approx.: 2,540 kg

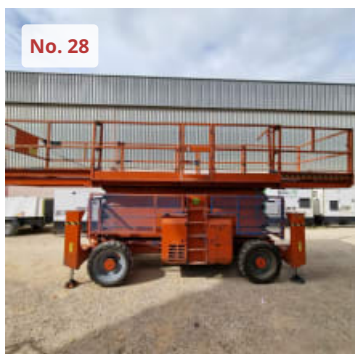


## GENIE Z-34/22N Articulated Boom Lift

Articulated boom lift  
Serial number Z34N10-8951  
YOM: 2010  
Maximum load capacity: 227 kg  
Maximum load capacity: 2 p  
Maximum working height: 12.5 m  
Maximum platform height: 10.5 m  
Maximum platform length: 6.8 m  
Platform rotation capacity: 355°  
Maximum forward speed: 6.4 km/h  
Maximum inclination: 2.5°  
  
Maximum wind speed: 12.5 m/s  
Gradeability: 35%  
Lateral force: 400 N  
Tires: 22 x 7 x 17 3/4  
Working hours according to counter: 1107 h

Battery: 48 V  
Power: 1.3 kW  
CE Standards

Item number: 730995, Manufacturer: GENIE, Model / Type: Z-34/22N, Year of manufacture: 2010, Item available from: Immediately, Item condition: unchecked, Delivery terms: FCA Porto Alto, Samora Correia, loaded on truck, Payment terms: 100% payment prior to collection, dimensions (l x w x h) approx.: 6,700 x 1,600 x 2,040 mm, weight approx.: 5,217 kg



## GENIE GS-5390 Scissor Lift

Scissor lift  
Serial number GS9011-47788  
YOM: 2011  
Max lifting height: 18,2 m  
Max platform height: 16,2 m  
Platform size: 3800 x 1800 mm  
Maximum load capacity: 680 kg  
Maximum inclination: 3°  
Maximum wind speed: 12.5 m/sec  
Travel speed: 8.0 km/h  
Maximum tilt capacity (retract): 40%

Power: 35.8 kW  
Diesel  
Solid wheels  
Working hours according to counter: 1803 h  
CE Standards

Item number: 728778, Manufacturer: GENIE, Model / Type: GS-5390, Year of manufacture: 2011,  
Item available from: Immediately, Item condition: unchecked, Delivery terms: FCA Porto Alto,  
Samora Correia, loaded on truck, Payment terms: 100% payment prior to collection, dimensions (l x  
w x h) approx.: 5,150 x 2,300 x 3,120 mm, weight approx.: 8,150 kg



## GESAN DVS 140 Power Generator

Power generator  
Serial number 212459  
YOM: 2007  
Power: 101 kW  
Working speed: 1500 Rpm  
Frequency: 50 Hz  
Voltage: 230-400 V  
Engine: VOLVO PENTA TAD 730 GE  
Engine power: 136 kW  
Alternator: STAMFORD UC.I274E1  
Control: DEEP SEA ELECTRONICS DSE 7320 MKII

Fuel: Diesel  
Working hours according to counter: 23369 h  
CE Standards

Item number: 729240, Manufacturer: GESAN, Model / Type: DVS 140, Year of manufacture: 2007,  
Item available from: Immediately, Item condition: unchecked, Delivery terms: FCA Porto Alto,  
Samora Correia, loaded on truck, Payment terms: 100% payment prior to collection, dimensions (l x  
w x h) approx.: 3,510 x 1,120 x 1,920 mm, weight approx.: 2,590 kg



## JCB VM 115 D Vibratory Roller

Vibratory roller  
Serial number JCB 2900563  
YOM: 2008  
Roller width: 2100 mm  
Roller diameter: 1490 mm  
Power 97 kW  
Displacement: 4399 cm3  
Drum Drive  
Engine: JCB 444 4-stroke with turbocompressor and external intercooler  
Liquid-cooled 4-cylinder engine  
Fuel: Diesel

Operational load on the front axis: 6000 kg  
Operational load on the rear axis: 5300 kg  
Compaction depth: 700-900 mm  
Turning radius (inside): 3400 mm  
Allowable longitudinal slope: 30%

Allowable cross slope: 25%  
2 working speeds: 1st speed 0-4.5 km/h / 2nd speed 0-10.5 km/h  
2 vibration positions: 1860 - 2160 Rpm  
Working hours according to counter: 4197 h  
Tires: 23.1-26 R3

CE Standards

Item number: 728951, Manufacturer: JCB, Model / Type: VM 115 D, Year of manufacture: 2008,  
Item available from: Immediately, Item condition: unchecked, Delivery terms: FCA Porto Alto,  
Samora Correia, loaded on truck, Payment terms: 100% payment prior to collection, dimensions (l x  
w x h) approx.: 5,500 x 2,300 x 2,950 mm, weight approx.: 11,300 kg





## GESAN DPS 80 Power Generator

Power generator  
Serial number 227799  
YOM: 2008  
Power: 64 kW  
Working speed: 1500 Rpm  
Frequency: 50 Hz  
Voltage: 230-400 V  
Engine: PERKINS 1104C-44TAG1  
Control: DEEP SEA ELECTRONICS DSE 7320 MKII  
Fuel: Diesel  
Working hours according to counter: 28956 h

CE Standards

Item number: 729642, Manufacturer: GESAN, Model / Type: DPS 80, Year of manufacture: 2008,  
Item available from: Immediately, Item condition: unchecked, Delivery terms: FCA Porto Alto,  
Samora Correia, loaded on truck, Payment terms: 100% payment prior to collection, dimensions (l x  
w x h) approx.: 2,810 x 1,010 x 1,670 mm, weight approx.: 1,880 kg



## GENIE GS-1932 Electric Scissor Lift

Electric scissor lift  
Serial number GS3011C-4743  
YOM: 2011  
Max lifting height: 7,5 m  
Max platform height: 5,6 m  
Platform size: 1640 x 750 mm  
Maximum load capacity: 227 kg  
Maximum load capacity (inside): 2P  
Maximum load capacity (outdoors): 1P  
Maximum inclination: 3°  
Maximum wind speed: 12.5 m/sec  
Travel speed: 4.0 km/h  
Power: 3.3 kW  
Battery: 24 V  
Solid wheels (12 x 4 x 8 in)  
Working hours according to counter: 514 h

CE Standards

Item number: 728772, Manufacturer: GENIE, Model / Type: GS-1932, Year of manufacture: 2011,  
Item available from: Immediately, Item condition: unchecked, Delivery terms: FCA Porto Alto,  
Samora Correia, loaded on truck, Payment terms: 100% payment prior to collection, dimensions (l x  
w x h) approx.: 1,850 x 800 x 2,100 mm, weight approx.: 1,513 kg



## GESAN DPS 80 Power Generator

Power generator  
Serial number 227800  
YOM: 2008  
Power: 64 kW  
Working speed: 1500 Rpm  
Frequency: 50 Hz  
Voltage: 230-400 V  
Engine: PERKINS 1104C-44TAG1  
Alternator: STAMFORD UC.I224G1  
Control: DEEP SEA ELECTRONICS DSE 7310 MKII  
Fuel: Diesel

Working hours according to counter: 21123 h  
CE Standards

Item number: 729657, Manufacturer: GESAN, Model / Type: DPS 80, Year of manufacture: 2008,  
Item available from: Immediately, Item condition: unchecked, Delivery terms: FCA Porto Alto,  
Samora Correia, loaded on truck, Payment terms: 100% payment prior to collection, dimensions (l x  
w x h) approx.: 2,810 x 1,050 x 1,560 mm, weight approx.: 4,499 kg



## GENIE GS-1932 Electric Scissor Lift

Electric scissor lift  
Serial number GS3011C-4825  
YOM: 2011  
Max lifting height: 7,5 m  
Max platform height: 5,6 m  
Platform size: 1640 x 750 mm  
Maximum load capacity: 227 kg  
Maximum load capacity (inside): 2P  
Maximum load capacity (outdoors): 1P  
Maximum inclination: 3°  
Maximum wind speed: 12.5 m/sec

Travel speed: 4.0 km/h  
Power: 3.3 kW  
Battery: 24 V  
Solid wheels (12 x 4 x 8 in)  
Working hours according to counter: 579 h

CE Standards

Item number: 728775, Manufacturer: GENIE, Model / Type: GS-1932, Year of manufacture: 2011, Item available from: Immediately, Item condition: unchecked, Delivery terms: FCA Porto Alto, Samora Correia, loaded on truck, Payment terms: 100% payment prior to collection, dimensions (l x w x h) approx.: 1,850 x 800 x 2,100 mm, weight approx.: 1,513 kg



## JCB VIBROMAX VMT 400 Tandem Roller

Vibratory roller  
Serial number JCB 1701314  
Roller width: 1400 mm  
Roller diameter: 780 mm  
Power 34.3 kW  
Engine: KUBOTA V-2203-ES01  
Liquid-cooled 4-cylinder engine  
Diesel  
Operational load on the front axis: 1840 kg  
Operational load on the rear axis: 1840 kg  
Compaction depth: 500 mm

Turning radius (inside): 2380 mm  
Allowable longitudinal slope: 40%  
Allowable cross slope: 30%  
2 working speeds: 1st speed 0-6 km/h / 2nd speed 0-11 km/h  
Working hours according to counter: 257 h

CE Standards

Item number: 728777, Manufacturer: JCB, Model / Type: VIBROMAX VMT 400, Year of manufacture: 2008, Item available from: Immediately, Item condition: unchecked, Delivery terms: FCA Porto Alto, Samora Correia, loaded on truck, Payment terms: 100% payment prior to collection, dimensions (l x w x h) approx.: 3,000 x 1,600 x 2,700 mm, weight approx.: 3,980 kg



## VOLVO/BRONTO S 70 XDT Aerial Platform

Aerial platform  
BRONTO S 70 XDT  
Serial number 5778-025  
Maximum working height: 70 m  
Maximum platform height to the ground: 68 m  
Maximum lateral reach: 34.8 m  
Maximum platform load: 600 kg  
Maximum number of people + extra weight: 7 + 40 kg  
Maximum horizontal load: 400 N  
Rotation: ± 280°  
Maximum length of the stabilizers: 8 m

Maximum resistance of the stabilizers: 250 kN  
Operating temperature range: -25°C to +40°C  
Maximum wind speed: 12.5m/s  
Maximum inclination: ± 0.3°  
Approximate service hours: 7604 h

VOLVO 440 truck  
Registration plate number: 47-HM-72  
Engine power: 324 kW  
Displacement: 12780 cm<sup>3</sup>  
Fuel: Diesel  
Mileage according to counter: 84363 km  
Number of seats: 2  
Wheelbase: 6285 mm  
EURO 5  
Next inspection in Portugal: 04-01-2022

Item number: 721747, Manufacturer: VOLVO/BRONTO, Model / Type: S 70 XDT, Year of manufacture: 2009, Item available from: IMMEDIATE, Item condition: unchecked, Delivery terms: EXW Porto Alto, Samora Correia, ex foundation, unpackaged, Payment terms: 100% payment prior to collection, dimensions (l x w x h) approx.: 12,300 x 2,550 x 4,000 mm, weight approx.: 35,000 kg



### GENIE GS-1932 Electric Scissor Lift

Electric scissor lift  
Serial number GS3011C-3468  
YOM: 2011  
Max lifting height: 7,5 m  
Max platform height: 5,6 m  
Platform size: 1640 x 750 mm  
Maximum load capacity: 227 kg  
Maximum load capacity (inside): 2P  
Maximum load capacity (outdoors): 1P  
Maximum inclination: 3°  
Maximum wind speed: 12.5 m/sec  
Travel speed: 4.0 km/h  
Power: 3.3 kW  
Battery: 24 V  
Solid wheels (12 x 4 x 8 in)  
Working hours according to counter: 535 h  
CE Standards

Item number: 728773, Manufacturer: GENIE, Model / Type: GS-1932, Year of manufacture: 2011, Item available from: Immediately, Item condition: unchecked, Delivery terms: FCA Porto Alto, Samora Correia, loaded on truck, Payment terms: 100% payment prior to collection, dimensions (l x w x h) approx.: 1,850 x 800 x 2,100 mm, weight approx.: 1,516 kg



### KAESER M100 Mobile Compressor

Portable compressor  
Serial number 1003  
YOM: 2007  
Engine: KUBOTA V3800 Di-T  
Power: 70.2 kW  
Working speed: 2600 Rpm  
Working pressure: 7 bar  
Fuel: Diesel  
Working hours according to counter: 4955 h  
CE Standards

Item number: 728938, Manufacturer: KAESER, Model / Type: M100, Year of manufacture: 2007, Item available from: Immediately, Item condition: unchecked, Delivery terms: FCA Porto Alto, Samora Correia, loaded on truck, Payment terms: 100% payment prior to collection, dimensions (l x w x h) approx.: 4,200 x 1,700 x 1,520 mm, weight approx.: 1,500 kg



## JLG 800 AJ Articulated Boom Lift

Articulated telescopic platform  
Serial number E300150013  
YOM: 2011  
Maximum load capacity: 230 kg  
Maximum platform height: 24.38 m  
Maximum horizontal range: 15.8 m  
Platform size: 910 x 1830 mm  
Rotation (continuous): 360°  
Ground clearance: 0.28m  
Maximum forward speed: 4.8 km/h  
Maximum inclination: 3°

Maximum wind speed: 12.5 m/s  
Engine: DEUTZ  
Fuel: Diesel  
Tires: 18-625 NHS  
Working hours according to counter: 4336 h

CE Standards

Item number: 729778, Manufacturer: JLG, Model / Type: 800 AJ, Year of manufacture: 2011, Item available from: Immediately, Item condition: unchecked, Delivery terms: FCA Porto Alto, Samora Correia, loaded on truck, Payment terms: 100% payment prior to collection, dimensions (l x w x h) approx.: 11,300 x 2,500 x 3,000 mm, weight approx.: 5,860 kg



## GESAN DVS 140 Power Generator

Power generator  
Serial number 228408  
YOM: 2008  
Power: 104.8 kW  
Working speed: 1500 Rpm  
Frequency: 50 Hz  
Voltage: 230-400 V  
Engine: VOLVO PENTA TAD 532 GE  
Engine power: 129 kW  
Alternator: STAMFORD UC.I274E1  
Control: DEEP SEA ELECTRONICS DSE 7320

Fuel: Diesel  
Working hours according to counter: 27298 h  
CE Standards

Item number: 729251, Manufacturer: GESAN, Model / Type: DVS 140, Year of manufacture: 2008, Item available from: Immediately, Item condition: unchecked, Delivery terms: FCA Porto Alto, Samora Correia, loaded on truck, Payment terms: 100% payment prior to collection, dimensions (l x w x h) approx.: 3,550 x 1,120 x 1,830 mm, weight approx.: 2,590 kg



## GESAN DVS 150 Power Generator

Power generator  
Serial number 228413  
YOM: 2008  
Power: 120 kW  
Working speed: 1500 Rpm  
Frequency: 50 Hz  
Voltage: 230-400 V  
Engine: VOLVO PENTA TAD 731 GE  
Engine power: 163 kW  
Alternator: STAMFORD UCI274F1  
Control: DEEP SEA ELECTRONICS DSE 7320



Fuel: Diesel  
Working hours according to counter: 25572 h  
CE Standards

Item number: 729263, Manufacturer: GESAN, Model / Type: DVS 150, Year of manufacture: 2008, Item available from: Immediately, Item condition: unchecked, Delivery terms: FCA Porto Alto, Samora Correia, loaded on truck, Payment terms: 100% payment prior to collection, dimensions (l x w x h) approx.: 3,510 x 1,130 x 1,930 mm, weight approx.: 2,628 kg



## Led Lighting Tower HIMOINSA T.ILUMN A7000

Led lighting tower  
Serial number 6100778  
YOM: 2006  
It has 6 spotlights of 400 x 310 mm  
Power 1500 W  
Without generator  
CE Standards

Item number: 729783, Manufacturer: HIMOINSA, Model / Type: T.ILUMN A7000, Year of manufacture: 2006, Item available from: Immediately, Item condition: unchecked, Delivery terms: FCA Porto Alto, Samora Correia, loaded on truck, Payment terms: 100% payment prior to collection, dimensions (l x w x h) approx.: 4,460 x 1,420 x 2,080 mm, weight approx.: 350 kg



## GESAN DVS 150 Power Generator

Power generator  
Serial number 228414  
YOM: 2008  
Power: 120 kW  
Working speed: 1500 Rpm  
Frequency: 50 Hz  
Voltage: 230-400 V  
Engine: VOLVO PENTA TAD 731 GE  
Engine power: 163 kW  
Alternator: STAMFORD UC1274F16  
Control: DEEP SEA ELECTRONICS DSE 7320

Fuel: Diesel  
Working hours according to counter: 19374 h  
CE Standards

Item number: 729267, Manufacturer: GESAN, Model / Type: DVS 150, Year of manufacture: 2008, Item available from: Immediately, Item condition: unchecked, Delivery terms: FCA Porto Alto, Samora Correia, loaded on truck, Payment terms: 100% payment prior to collection, dimensions (l x w x h) approx.: 3,530 x 1,140 x 1,840 mm, weight approx.: 2,628 kg



## GESAN DPS 20 Power Generator

Power generator  
Serial number 228745  
YOM: 2008  
Power: 16.3 kW  
Working speed: 1500 Rpm  
Frequency: 50 Hz  
Voltage: 230-400 V  
Engine: PERKINS  
Alternator: STAMFORD BC1184E1  
Control: DEEP SEA ELECTRONICS DSE 7210  
Fuel: Diesel

Working hours according to counter: 8902 h  
CE Standards

Item number: 729666, Manufacturer: GESAN, Model / Type: DPS 20, Year of manufacture: 2008, Item available from: Immediately, Item condition: unchecked, Delivery terms: FCA Porto Alto, Samora Correia, loaded on truck, Payment terms: 100% payment prior to collection, dimensions (l x w x h) approx.: 1,880 x 860 x 1,320 mm, weight approx.: 867 kg



## GESAN DVS 460 Power Generator

Power generator  
Serial number 228475  
YOM: 2008  
Power: 369.6 kW  
Working speed: 1500 Rpm  
Frequency: 50Hz  
Voltage: 230-400V  
Engine: VOLVO PENTA TAD 1640GE  
Engine power: 440 kW  
Alternator: STAMFORD HC.I534C1  
Control: DEEP SEA ELECTRONICS DSE 7320  
  
Fuel: Diesel  
Working hours according to counter: 18072 h  
CE Standards

Item number: 729667, Manufacturer: GESAN, Model / Type: DVS 460, Year of manufacture: 2008, Item available from: Immediately, Item condition: unchecked, Delivery terms: FCA Porto Alto, Samora Correia, loaded on truck, Payment terms: 100% payment prior to collection, dimensions (l x w x h) approx.: 5,530 x 1,580 x 2,420 mm, weight approx.: 6,377 kg



## GESAN DPS 30 Power Generator

Power generator  
Serial number 229263  
YOM: 2008  
Power: 24 kW  
Working speed: 1500 Rpm  
Frequency: 50 Hz  
Voltage: 230-400V  
Engine: PERKINS 1103C-33  
Engine power: 31 kW  
Alternator: STAMFORD BCI184G1  
Control: DEEP SEA ELECTRONICS DSE 7310 MKII  
  
Fuel: Diesel  
Working hours according to counter: 18183 h  
CE Standards

Item number: 729668, Manufacturer: GESAN, Model / Type: DPS 30, Year of manufacture: 2008, Item available from: Immediately, Item condition: unchecked, Delivery terms: FCA Porto Alto, Samora Correia, loaded on truck, Payment terms: 100% payment prior to collection, dimensions (l x w x h) approx.: 2,260 x 1,070 x 1,580 mm, weight approx.: 1,437 kg



## GESAN DVS 250 Power Generator

Power generator  
Serial number 229314  
YOM: 2008  
Power: 200 kW  
Working speed: 1500 RPM  
Frequency: 50Hz  
Voltage: 230-400V  
Engine: VOLVO PENTA TAD 734 GE  
Engine power: 250 kW  
Alternator: STAMFORD UCDI274K1  
Control: DEEP SEA ELECTRONICS DSE 7320 MKII  
  
Fuel: Diesel  
Working hours according to counter: 23881 h  
CE Standards

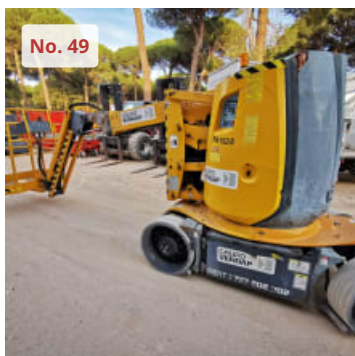
Item number: 729669, Manufacturer: GESAN, Model / Type: DVS 250, Year of manufacture: 2008, Item available from: Immediately, Item condition: unchecked, Delivery terms: FCA Porto Alto, Samora Correia, loaded on truck, Payment terms: 100% payment prior to collection, dimensions (l x w x h) approx.: 3,690 x 1,420 x 2,320 mm, weight approx.: 3,890 kg



## GENIE S-65 Articulated Boom Lift

Articulated boom lift  
Serial number S6010-20492  
YOM: 2010  
Maximum load capacity: 227 kg  
Maximum load capacity: 2 p. + 70 kg  
Maximum working height: 21.6 m  
Maximum platform height: 19.8 m  
Maximum horizontal range: 17.1 m  
Platform rotation capacity: 160°  
Maximum forward speed: 6.4 km/h  
Maximum inclination: 2.5°  
  
Maximum wind speed: 12.5 m/s  
Maximum lateral gradeability: 25%  
Gradeability: 45%  
Engine: DEUTZ D2011-L03  
Power: 36 kW  
  
Tires: 355/55D 625 NHS  
Working hours according to counter: 5101 h  
CE Standards

Item number: 730989, Manufacturer: GENIE, Model / Type: S-65, Year of manufacture: 2010, Item available from: Immediately, Item condition: unchecked, Delivery terms: FCA Porto Alto, Samora Correia, loaded on truck, Payment terms: 100% payment prior to collection, dimensions (l x w x h) approx.: 9,000 x 2,550 x 2,840 mm, weight approx.: 10,100 kg



## HAULOTTE HA12CJ Articulated Boom Lift

Articulated boom lift  
Serial number AE 107338  
YOM: 2010  
Maximum load capacity: 250 kg  
Maximum load capacity: 2 p. + 90 kg  
Maximum working height: 11.7 m  
Maximum platform height: 9.7 m  
Maximum horizontal range: 6.44 m  
Platform rotation capacity: 355°  
Maximum forward speed: 6 km/h  
Maximum inclination: 3°  
  
Maximum wind speed: 12.5 m/s  
Gradeability: 25%  
Lateral force: 400 N  
Tires: 600 x 190  
Working hours according to counter: 675 h  
  
battery: 48 V  
CE Standards

Item number: 730990, Manufacturer: HAULOTTE, Model / Type: HA12CJ, Year of manufacture: 2010, Item available from: Immediately, Item condition: unchecked, Delivery terms: FCA Porto Alto, Samora Correia, loaded on truck, Payment terms: 100% payment prior to collection, dimensions (l x w x h) approx.: 5,800 x 1,200 x 2,100 mm, weight approx.: 6,970 kg



## GENIE Z-40/23N RJ Articulated Boom Lift

Articulated boom lift  
Serial number Z40N10-835  
YOM: 2010  
Maximum load capacity: 227 kg  
Maximum load capacity: 2 p  
Maximum working height: 14.2 m  
Maximum platform height: 12.3 m  
Maximum platform length: 6.91 m  
Platform rotation capacity: 355°  
Maximum forward speed: 6 km/h  
Maximum inclination: 2.5°

Maximum wind speed: 12.5 m/s  
Gradeability: 30%  
Lateral force: 400 N  
Tires: 22 x 7 x 17,5 / 26 x 7 x 22  
Working hours according to counter: 1426 h  
  
Battery: 48 V  
Power: 2.3 kW  
CE Standards

Item number: 730994, Manufacturer: GENIE, Model / Type: Z-40/23N RJ, Year of manufacture: 2010, Item available from: Immediately, Item condition: unchecked, Delivery terms: FCA Porto Alto, Samora Correia, loaded on truck, Payment terms: 100% payment prior to collection, dimensions (l x w x h) approx.: 6,850 x 1,600 x 2,200 mm, weight approx.: 6,962 kg